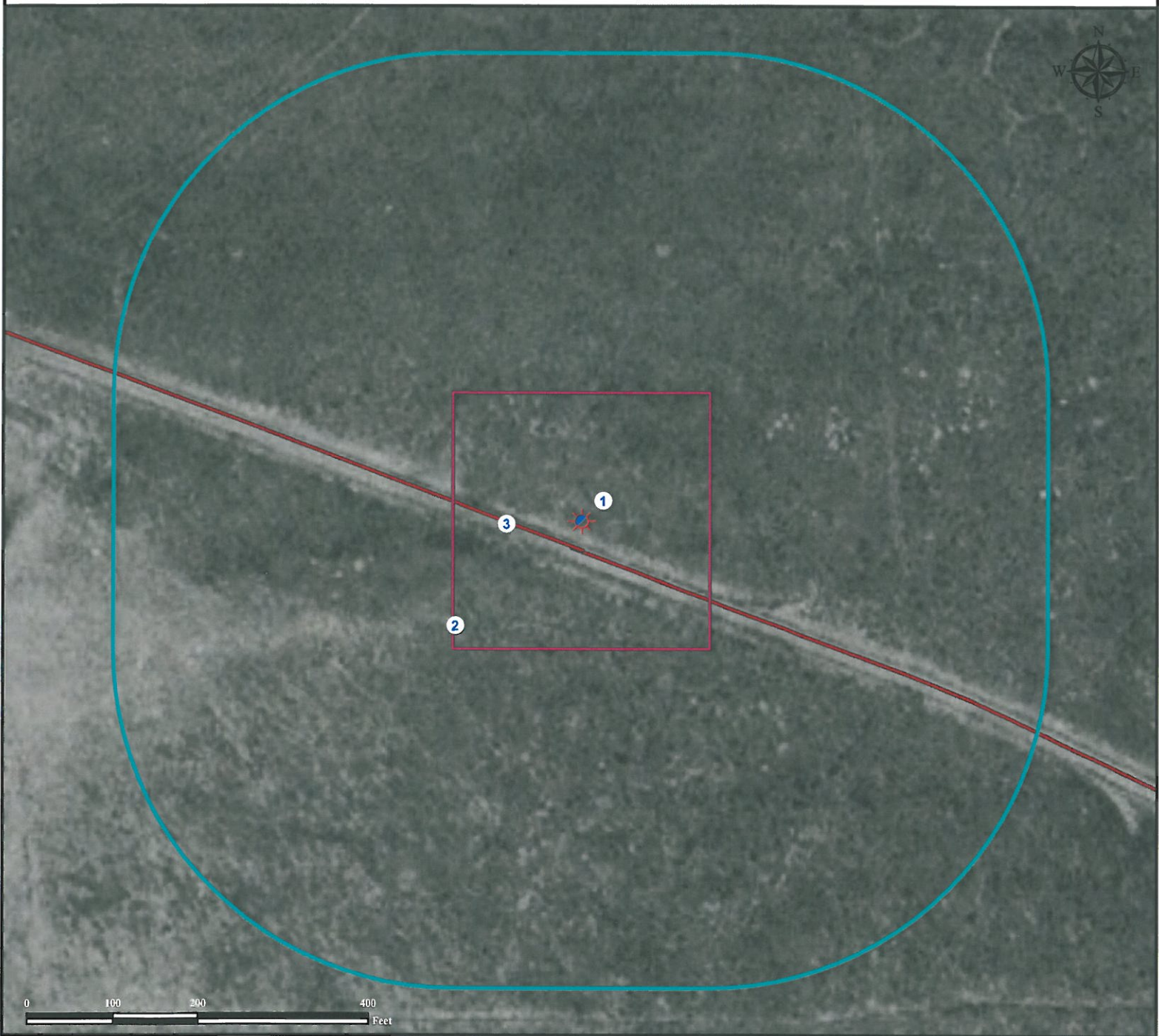


# Location Drawing MARY KANODE 11-3

SE¼ SW¼ SECTION 11, TOWNSHIP 10 NORTH, RANGE 64 WEST OF THE 6TH PRINCIPAL MERIDIAN



1. Proposed Well MARY KANODE 11-3
2. Rig Footprint.
3. Private road is  $\pm 34'$  S.

## Legend

- |   |  |
|---|--|
|  Proposed Well |  Rig Foot Print |
|  Private Road  |  400' Radius    |

**Reference Location**  
\*\* All Measurements are Made from  
Reference Well MARY KANODE 11-3 \*\*  
Lat: 40.843540° Long: -104.517612° (NAD 83)  
Elevation: 5269 Feet

Surface Use: Rangeland



Use our resources to find yours!  
[www.petro-fs.com](http://www.petro-fs.com)  
(303) 928-7128

Field Date: 04/08/2011  
Drafting Date: 06/21/2011  
Drafter: DMM  
Checked By: BHF

Data Sources:  
- Aerial courtesy of NAIP (2009)

Prepared for:



WARD  
PETROLEUM  
CORPORATION