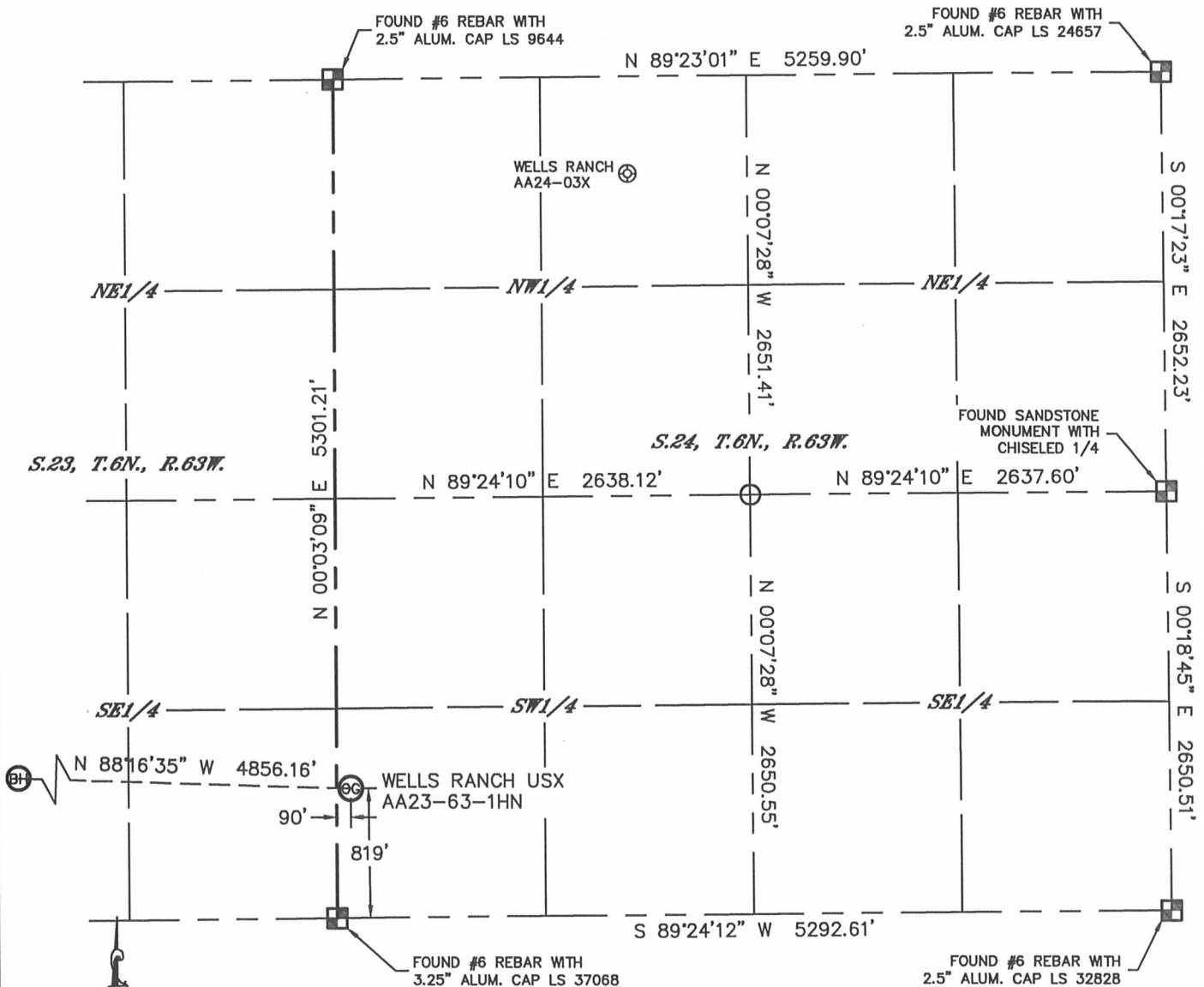


WELL LOCATION CERTIFICATE

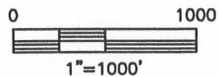
THIS MAP DOES NOT REPRESENT A BOUNDARY SURVEY

SECTION: 24
TOWNSHIP: 6N
RANGE: 63W



In accordance with a request from Greg Wilson with Noble Energy Inc. Lat40°, Inc. has determined the surface location of the WELLS RANCH USX AA23-63-1HN to be 819' from the SOUTH line and 90' from the WEST line as measured at right angles from the section lines of Section 24, Township 6 North, Range 63 West and the bottom hole to be 1000' from the SOUTH line and 535' from the WEST line as measured at right angles from the section lines of Section 23, Township 6 North, Range 63 West of the Sixth Principal Meridian, County of Weld, State of Colorado.

I hereby state that this Well Location Certificate was prepared by me, or under my direct supervision, that the fieldwork was completed on 6/21/2012, for and on behalf of Noble Energy Inc. That this is not a Land Survey Plat or an Improvement Survey Plat, and that it is not to be relied upon for establishment of fence, building, or other future improvement lines.



NOTE:

- 1) Bearings shown are Grid Bearings of the Colorado State Plane Coordinate System, North Zone, North American Datum 1983/2007. The lineal dimensions as contained herein are based upon the "U.S. Survey Foot."
- 2) Ground elevations are based on an observed GPS elevation (NAVD 1988 DATUM).
- 3) NEAREST EXISTING WELL: WELLS RANCH AA24-03X, 4277'
- 4) IMPROVEMENTS: See LOCATION DRAWING for all visible improvements within 400' of disturbed area.
- 5) SURFACE USE: RANGELAND
- 6) INSTRUMENT OPERATOR: ADAM KELLY

SURFACE LOCATION

LAT: 40.46699°N
LONG: 104.39424°W
PDOP: 1.7
ELEV: 4836'
1/4, 1/4: SW1/4SW1/4
NEAREST PROPERTY LINE: 90' WEST

BOTTOM HOLE

LAT: 40.46755°N
LONG: 104.41167°W

NOTE

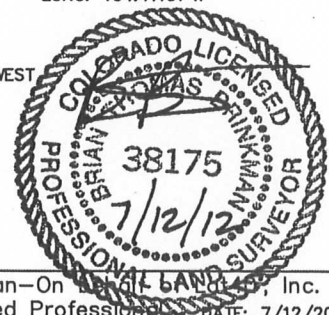
According to Colorado law, you must commence any legal action based upon any defect in this W.L.C. within three years after you discover such defect. In no event, may any action based upon any defect in this survey be commenced more than ten years after the date of the certificate shown hereon. (13-80-105 C.R.S.)

LEGEND

- = ALIQUOT MONUMENT AS DESCRIBED
- = CALCULATED POSITION

SHEET 1 OF 2

Brian T. Brinkman-On Behalf of Lat40°, Inc.
Colorado Licensed Professional Land Surveyor No. 38175
DATE: 7/12/2012
PROJECT#: 2012094

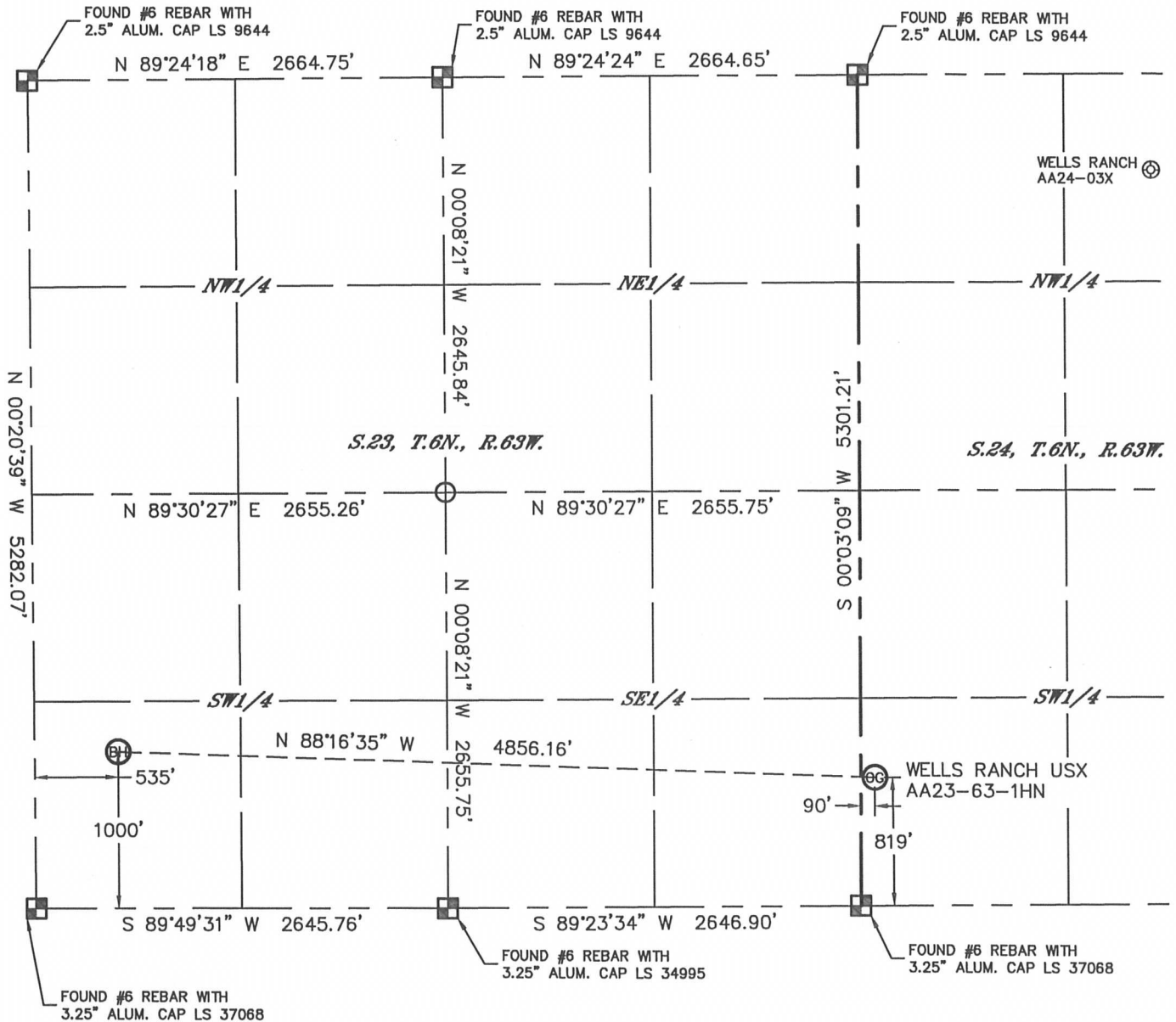


Lat40°, Inc. 1635 Foxtrail Drive, Suite 325 Loveland, CO 970-776-3321

WELL LOCATION CERTIFICATE

THIS MAP DOES NOT REPRESENT A BOUNDARY SURVEY



SECTION: 24
TOWNSHIP: 6N
RANGE: 63W



NOTE

According to Colorado law, you must commence any legal action based upon any defect in this W.L.C. within three years after you discover such defect. In no event, may any action based upon any defect in this survey be commenced more than ten years after the date of the certificate shown hereon. (13-80-105 C.R.S.)

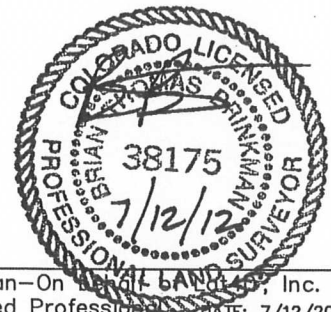
LEGEND

-  = ALIQUOT MONUMENT AS DESCRIBED
-  = CALCULATED POSITION

SHEET 2 OF 2

Brian T. Brinkman-On Demand Land Survey, Inc.
Colorado Licensed Professional
Land Surveyor No. 38175

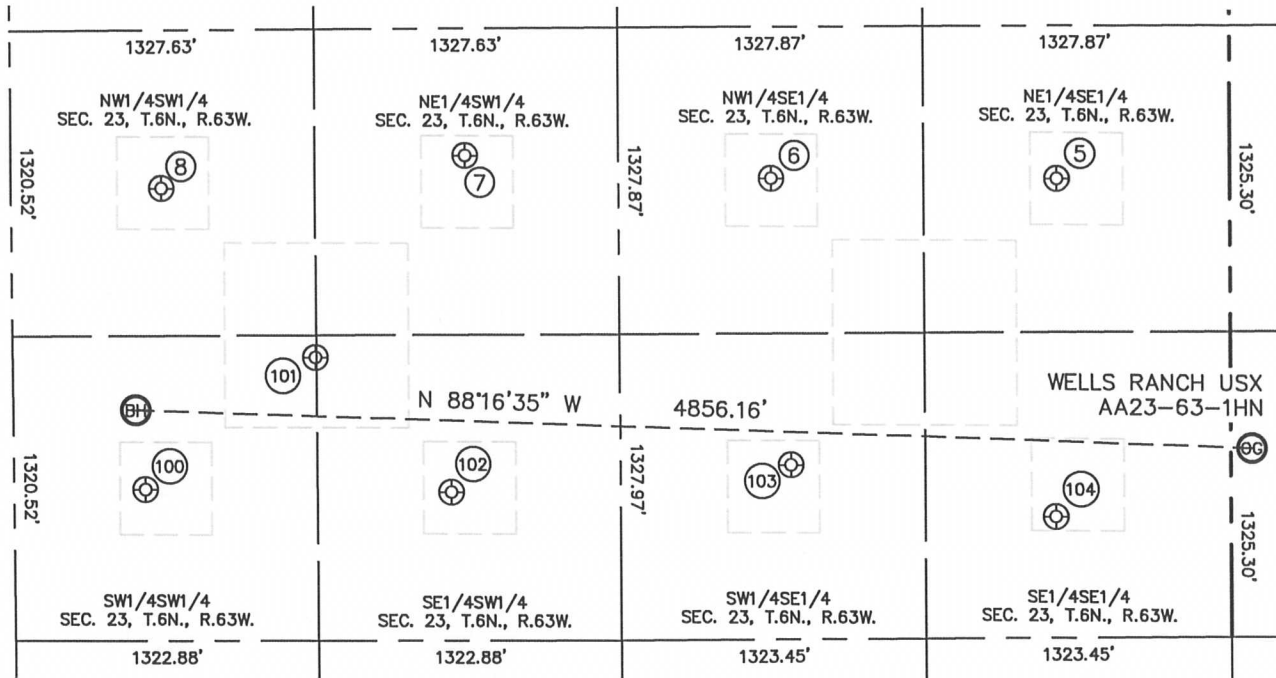
DATE: 7/12/2012
PROJECT#: 2012094



SITE SKETCH

WELLS RANCH USX AA23-63-1HN

SECTION: 24
TOWNSHIP: 6N
RANGE: 63W



⑤

WELLS RANCH USX
AA23-09
NE1/4SE1/4
1989' FSL
745' FWL
LAT-40.47020N
LONG-104.39718W
PDOP: 2.3
ELEV: 4816'

⑥

WELLS RANCH USX
AA23-10
NW1/4SE1/4
1998' FSL
1990' FWL
LAT-40.47023N
LONG-104.40165W
PDOP: 2.3
ELEV: 4796'

⑦

WELLS RANCH USX
AA23-11
NE1/4SW1/4
2102' FSL
1980' FWL
LAT-40.47054N
LONG-104.40645W
PDOP: 2.2
ELEV: 4800'

⑧

WELLS RANCH USX
AA23-12
NW1/4SW1/4
1961' FSL
656' FWL
LAT-40.47019N
LONG-104.41121W
PDOP: 2.4
ELEV: 4799'

⑩①

WELLS RANCH
USX AA23-13
SW1/4SW1/4
656' FSL
573' FWL
LAT-40.46661N
LONG-104.41154W
PDOP: 1.6
ELEV: 4812'

⑩②

WELLS RANCH
USX AA23-25
SW1/4SW1/4
1229' FSL
1319' FWL
LAT-40.46816N
LONG-104.40885W
PDOP: 1.6
ELEV: 4806'

⑩③

WELLS RANCH
USX AA23-14
SE1/4SW1/4
644' FSL
1906' FWL
LAT-40.46654N
LONG-104.40675W
PDOP: 0.8
ELEV: 4818'

⑩④

WELLS RANCH
USX AA23-15
SW1/4SE1/4
756' FSL
1910' FWL
LAT-40.46683N
LONG-104.40142W
PDOP: 1.6
ELEV: 4817'

⑩⑤

WELLS RANCH
USX AA23-16
SE1/4SE1/4
524' FSL
755' FWL
LAT-40.46618N
LONG-104.39729W
PDOP: 1.6
ELEV: 4820'

