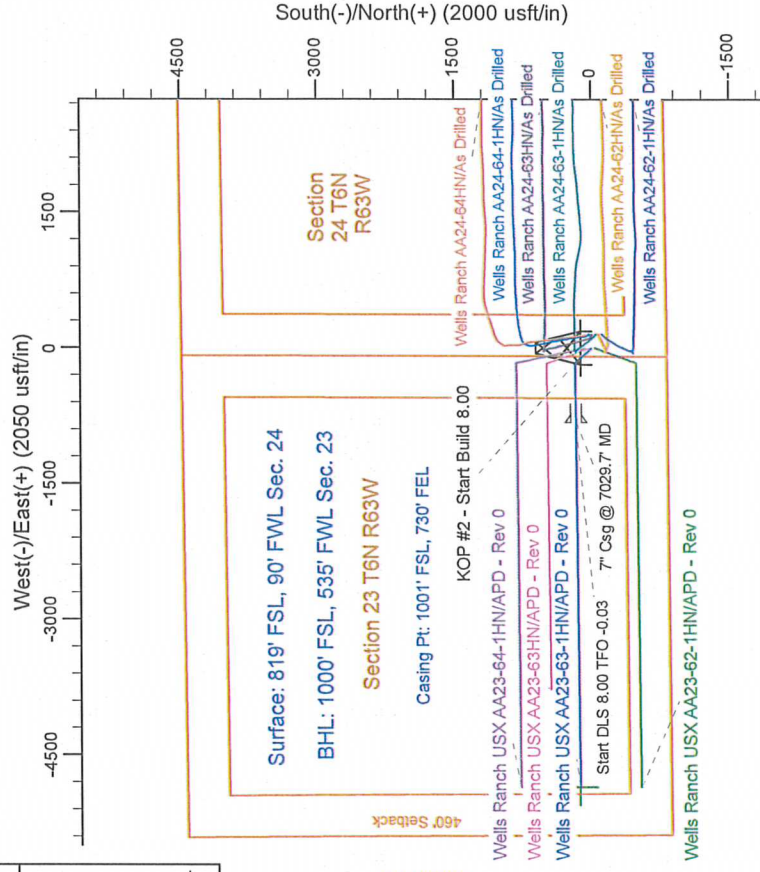
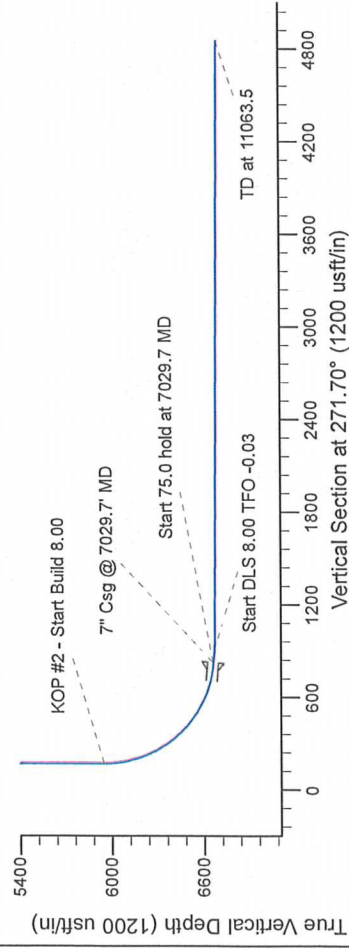
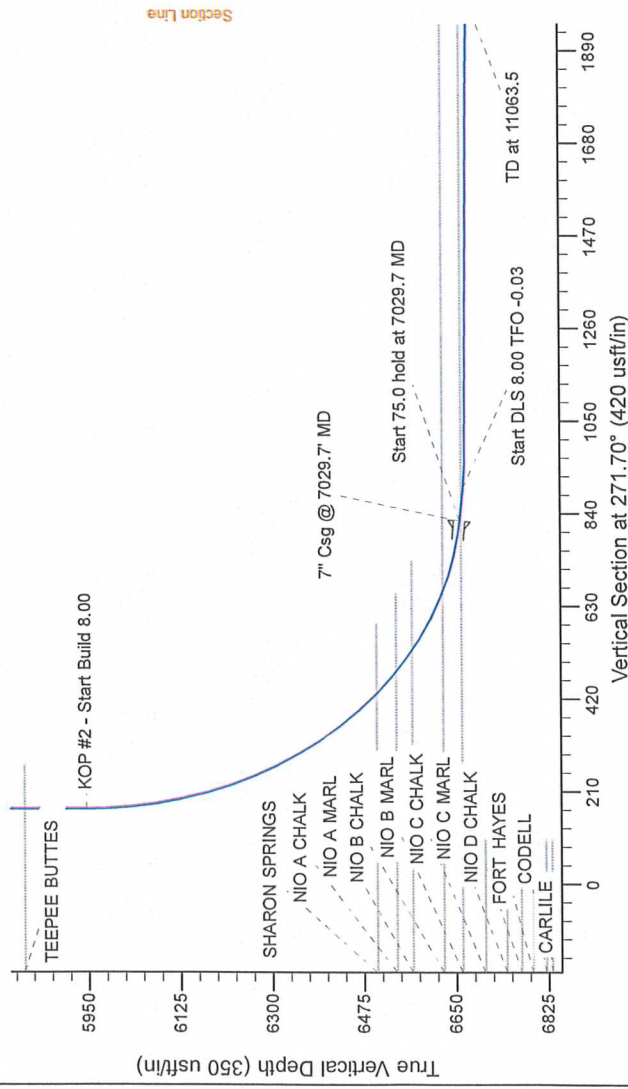


Project: Wattenberg Field
Site: AA (Sec.24-T06N-R63W) Weld County, CO
Well: Wells Ranch UX# AA23-63-1HN
Wellbore: Original Drilling
Design: APD - Rev 0

Geodetic System: US State Plane 1983
Datum: North American Datum 1983
Ellipsoid: GRS 1980
Zone: Colorado Northern Zone
System Datum: Mean Sea Level

SECTION DETAILS										
Sp	MD	Inc	Azi	TVD	+N+S	+E+W	Dlog	TFace	VSeet	Target
1	2290.0	0.00	0.00	0.0	0.0	0.0	0.00	0.00	0.0	
2	2290.0	0.00	0.00	2200.0	0.0	0.0	0.00	0.00	0.0	
3	2680.0	12.00	317.65	2679.5	37.0	0.0	2.50	317.65	34.8	
4	3376.2	12.00	317.65	3357.5	144.0	-131.3	2.50	0.00	135.5	
5	3958.2	0.00	0.00	3934.0	181.0	-165.0	2.50	180.00	170.3	
6	5967.2	0.00	0.00	5945.0	181.0	-165.0	0.00	0.00	170.3	
7	7029.7	85.00	269.55	6658.5	175.9	-818.8	8.00	269.55	823.6	
8	7104.7	89.00	269.55	6665.0	175.3	-893.5	0.00	0.00	898.3	
9	7162.2	86.60	269.55	6667.7	174.8	-890.9	8.00	-0.03	955.7	
10	11063.5	89.60	269.55	6694.9	144.0	-4851.9	0.00	0.00	4854.1	
Wells Ranch USX AA23-63-11NH BHL 1000FSL, 535FWL										



WELL DETAILS: Wells Ranch USX AA23-63-1HN			
Northing	Ground Level:	4836.0	Longitude
1414883.03	Latitude	40.466990	-104.394240
3307653.32			
Plan: APD - Rev 0 (Wells Ranch USX AA23-63-1HN/Original Drilling)			
Created By: Carrie Willers		Date: 18:45, January 08 2013	
Checked:		Date:	
Reviewed:		Date:	
Approved:		Date:	