

Project: Wattenberg Field
Site: AA (Sec.24-T6N-R63W) Weld County, CO
Well: Wells Ranch USX AA23-64-1HN
Wellbore: Original Drilling
Design: APD - Rev 0

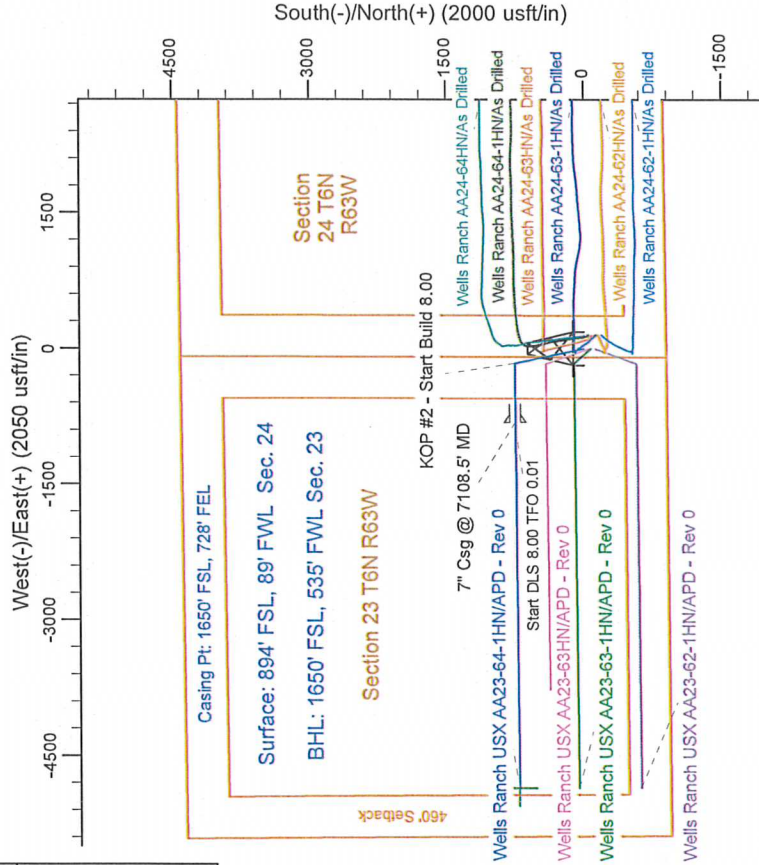
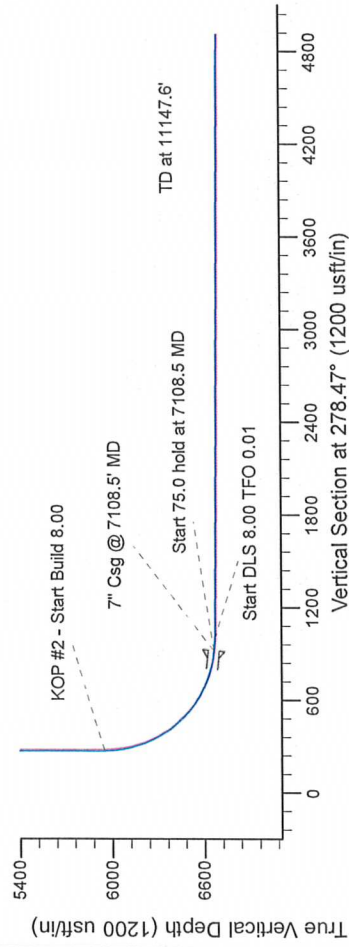
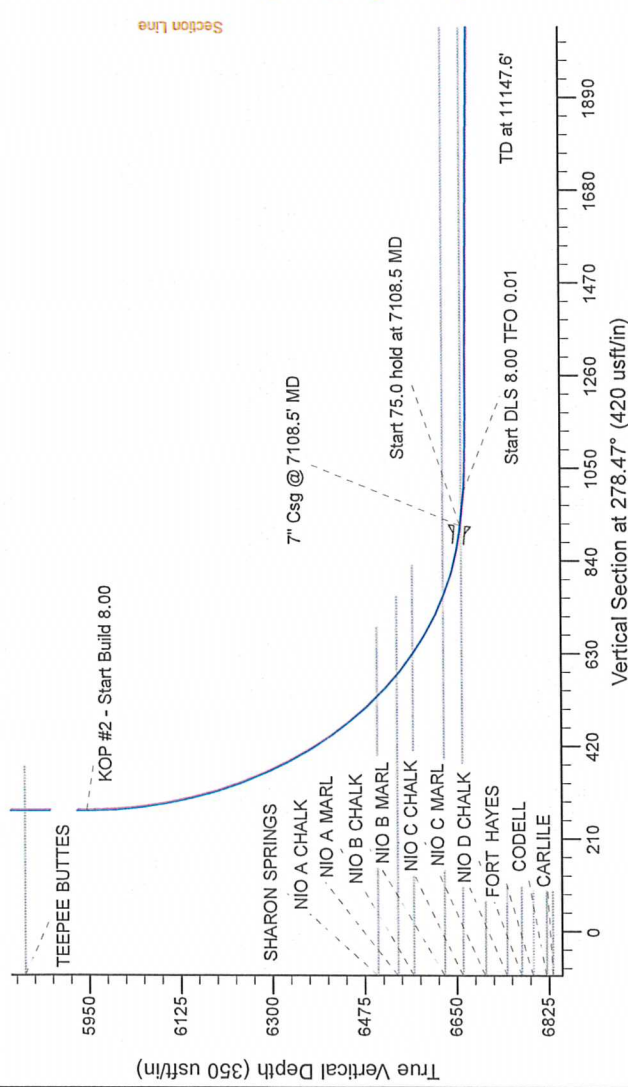
Northern Region Drilling

Geodetic System: US State Plane 1983
Datum: North American Datum 1983
Ellipsoid: GRS 1980
Zone: Colorado Northern Zone
System Datum: Mean Sea Level

SECTION DETAILS

Sec	MD	Inc	Azi	TVD	+N/S	+E/W	Dleg	TFace	VSecl	Target
1	0.0	0.00	0.00	0.0	0.0	0.0	0.00	0.00	0.0	
2	1500.0	0.00	0.00	1500.0	0.0	0.0	0.00	0.00	0.0	
3	2140.6	16.01	347.76	2132.3	86.9	-18.9	2.50	347.76	31.5	
4	4299.8	16.01	347.76	4207.7	669.1	-145.1	0.00	0.00	242.1	
5	4940.4	0.00	0.00	4840.0	756.0	-164.0	2.50	180.00	273.6	
6	6046.0	0.00	0.00	5945.6	756.0	-164.0	0.00	0.00	273.6	
7	7108.5	85.00	269.60	6659.1	751.4	-817.8	8.00	269.60	919.5	
8	7183.5	85.00	269.60	6665.6	750.9	-892.5	0.00	0.00	993.4	
9	7241.1	89.60	269.60	6668.3	750.5	-949.9	8.00	0.01	1050.1	
10	11147.6	89.60	269.60	6695.3	723.3	-4856.3	0.00	0.00	4909.8	

Wells Ranch USX AA23-64-1HN BHL 1650'FSL, 535'FWL



T G M

Azimuths to Grid North
True North: -0.71°
Magnetic North: 7.70°

Magnetic Field
Strength: 53064.5snT
Dip Angle: 67.12°
Date: 1/7/2013
Model: IGRF200510

WELL DETAILS: Wells Ranch USX AA23-64-1HN		
Ground Level: 4836.0	Latitude: 40.467190	Longitude: -104.394230
North: 1414955.91	East: 3307655.19	
Plan: APD - Rev 0 (Wells Ranch USX AA23-64-1HN Original Drilling)		
Created By: Carrie Willers Date: 11/41, January 09 2013		
Checked: Date: _____		
Reviewed: Date: _____		
Approved: Date: _____		