

Well Name: **Aristocrat Angus 6-0-8**

Surface Location: Aristocrat Angus 6-0-8 Pad Sec.8-T3N-R65W
 North American Datum 1983 US State Plane 1983 Colorado Northern Zone

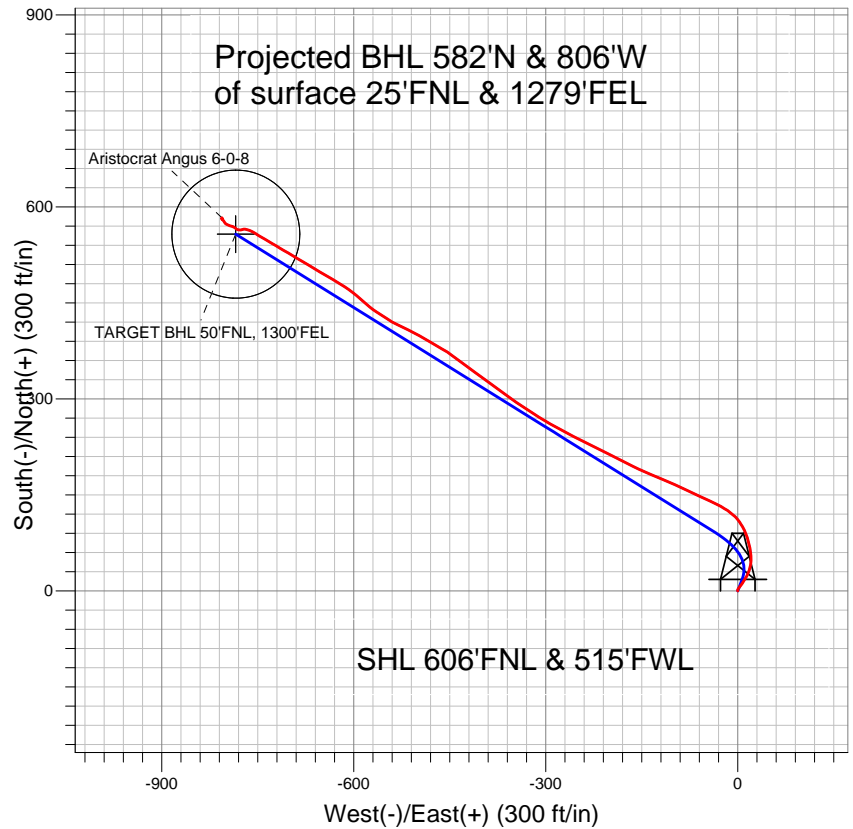
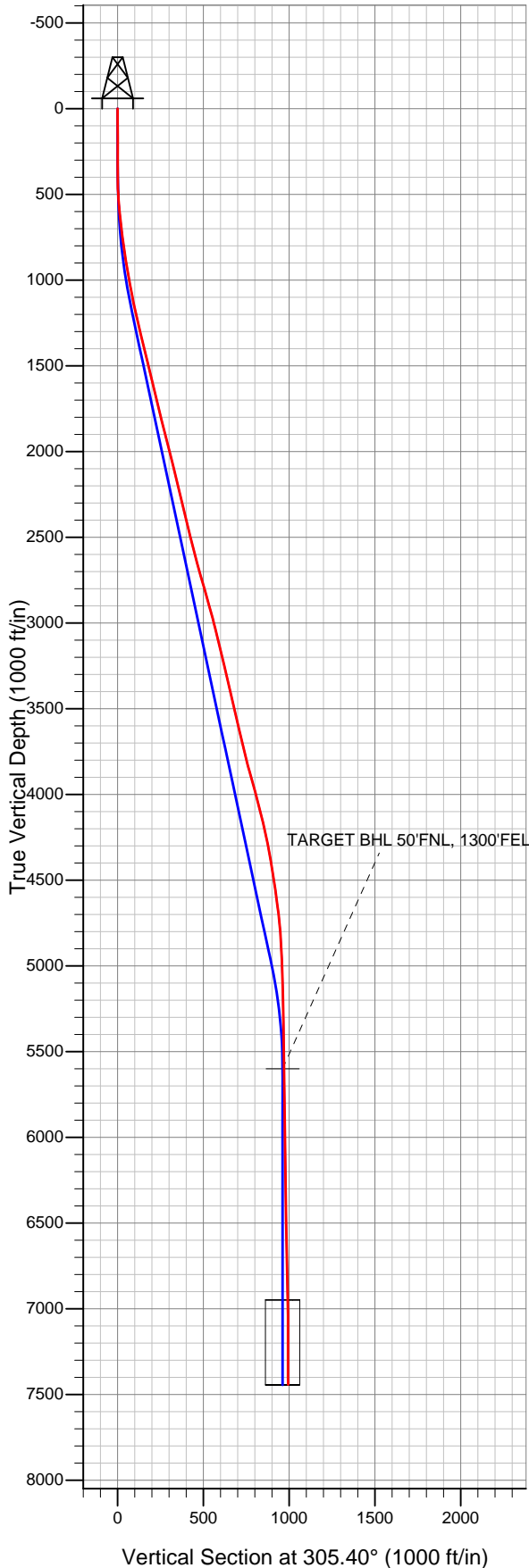
Ground Elevation: 4862.0

+N/-S	+E/-W	Northing	Easting	Latitude	Longitude
0.0	0.0	1333325.97	3229021.41	40.245470	-104.679550

Original Well Elev WELL @ 4874.0ft (Original Well Elev)

Slot

EnCana Oil & Gas Weld County CO



LEGEND

- Aristocrat Angus 6-0-8, Wellbore #1, Plan #2 (10-23-12) V0
- Wellbore #1
- Survey #1

Final Survey Plot

Projected Final Survey -
 7557'MD & 7441'TVD @ 994'VS
 1.1 deg Inc 325.4 deg AZ

Project: SEC.8-T3N-R65W
 Site: Aristocrat Angus 6-0-8 Pad Sec.8-T3N-R65W
 Well: Aristocrat Angus 6-0-8
 Plan: Wellbore #1



Directional

EnCana Oil & Gas Weld County CO

SEC.8-T3N-R65W

Aristocrat Angus 6-0-8 Pad Sec.8-T3N-R65W

Aristocrat Angus 6-0-8

Wellbore #1

Survey: Survey #1

Standard Survey Report

15 November, 2012

Company:	EnCana Oil & Gas Weld County CO	Local Co-ordinate Reference:	Well Aristocrat Angus 6-0-8
Project:	SEC.8-T3N-R65W	TVD Reference:	WELL @ 4874.0ft (Original Well Elev)
Site:	Aristocrat Angus 6-0-8 Pad Sec.8-T3N-R65W	MD Reference:	WELL @ 4874.0ft (Original Well Elev)
Well:	Aristocrat Angus 6-0-8	North Reference:	True
Wellbore:	Wellbore #1	Survey Calculation Method:	Minimum Curvature
Design:	Wellbore #1	Database:	Landmark

Project	SEC.8-T3N-R65W, Weld County, Colorado		
Map System:	US State Plane 1983	System Datum:	Mean Sea Level
Geo Datum:	North American Datum 1983		Using Well Reference Point
Map Zone:	Colorado Northern Zone		Using geodetic scale factor

Site	Aristocrat Angus 6-0-8 Pad Sec.8-T3N-R65W				
Site Position:		Northing:	1,333,315.05ft	Latitude:	40.245440
From:	Lat/Long	Easting:	3,229,021.51ft	Longitude:	-104.679550
Position Uncertainty:	0.0 ft	Slot Radius:	"	Grid Convergence:	0.53 °

Well	Aristocrat Angus 6-0-8					
Well Position	+N/-S	0.0 ft	Northing:	1,333,325.97 ft	Latitude:	40.245470
	+E/-W	0.0 ft	Easting:	3,229,021.41 ft	Longitude:	-104.679550
Position Uncertainty		0.0 ft	Wellhead Elevation:	ft	Ground Level:	4,862.0 ft

Wellbore	Wellbore #1				
Magnetics	Model Name	Sample Date	Declination (°)	Dip Angle (°)	Field Strength (nT)
	IGRF2010	11/2/2012	8.62	66.89	52,913

Design	Wellbore #1				
Audit Notes:					
Version:	1.0	Phase:	ACTUAL	Tie On Depth:	0.0
Vertical Section:	Depth From (TVD) (ft)	+N/-S (ft)	+E/-W (ft)	Direction (°)	
	0.0	0.0	0.0	305.40	

Survey Program	Date	11/15/2012			
From (ft)	To (ft)	Survey (Wellbore)	Tool Name	Description	
77.0	7,557.0	Survey #1 (Wellbore #1)	MWD	MWD - Standard	

Survey										
Measured Depth (ft)	Inclination (°)	Azimuth (°)	Vertical Depth (ft)	+N/-S (ft)	+E/-W (ft)	Vertical Section (ft)	Dogleg Rate (°/100ft)	Build Rate (°/100ft)	Turn Rate (°/100ft)	
0.0	0.00	0.00	0.0	0.0	0.0	0.0	0.00	0.00	0.00	
77.0	1.10	346.10	77.0	0.7	-0.2	0.6	1.43	1.43	0.00	
166.0	1.90	31.80	166.0	2.8	0.4	1.3	1.55	0.90	51.35	
257.0	4.00	37.60	256.8	6.6	3.1	1.3	2.33	2.31	6.37	
347.0	6.10	36.00	346.5	13.0	7.9	1.1	2.34	2.33	-1.78	
438.0	8.40	27.30	436.8	22.8	13.7	2.0	2.79	2.53	-9.56	
530.0	10.10	15.30	527.6	36.5	19.0	5.7	2.79	1.85	-13.04	
620.0	9.80	357.20	616.2	51.8	20.7	13.2	3.48	-0.33	-20.11	
630.0	10.00	357.00	626.1	53.5	20.6	14.2	2.03	2.00	-2.00	
685.0	10.00	350.00	680.3	63.0	19.5	20.6	2.21	0.00	-12.73	
735.0	9.50	348.60	729.5	71.3	17.9	26.7	1.11	-1.00	-2.80	
820.0	9.90	339.80	813.3	85.0	14.0	37.8	1.80	0.47	-10.35	
906.0	10.20	333.10	898.0	98.8	8.0	50.7	1.40	0.35	-7.79	

Company:	EnCana Oil & Gas Weld County CO	Local Co-ordinate Reference:	Well Aristocrat Angus 6-0-8
Project:	SEC.8-T3N-R65W	TVD Reference:	WELL @ 4874.0ft (Original Well Elev)
Site:	Aristocrat Angus 6-0-8 Pad Sec.8-T3N-R65W	MD Reference:	WELL @ 4874.0ft (Original Well Elev)
Well:	Aristocrat Angus 6-0-8	North Reference:	True
Wellbore:	Wellbore #1	Survey Calculation Method:	Minimum Curvature
Design:	Wellbore #1	Database:	Landmark

Survey									
Measured Depth (ft)	Inclination (°)	Azimuth (°)	Vertical Depth (ft)	+N/-S (ft)	+E/-W (ft)	Vertical Section (ft)	Dogleg Rate (°/100ft)	Build Rate (°/100ft)	Turn Rate (°/100ft)
992.0	10.70	320.10	982.6	111.7	-0.5	65.1	2.80	0.58	-15.12
1,077.0	10.60	306.70	1,066.1	122.4	-11.9	80.6	2.91	-0.12	-15.76
1,163.0	12.70	299.20	1,150.4	131.8	-26.5	97.9	3.01	2.44	-8.72
1,248.0	13.20	294.10	1,233.2	140.3	-43.5	116.7	1.47	0.59	-6.00
1,334.0	13.10	295.80	1,316.9	148.5	-61.2	135.9	0.46	-0.12	1.98
1,420.0	14.10	294.80	1,400.5	157.2	-79.5	155.8	1.19	1.16	-1.16
1,505.0	14.20	294.10	1,483.0	165.8	-98.4	176.3	0.23	0.12	-0.82
1,591.0	13.90	293.90	1,566.4	174.3	-117.5	196.7	0.35	-0.35	-0.23
1,676.0	13.80	291.50	1,648.9	182.1	-136.3	216.6	0.69	-0.12	-2.82
1,762.0	13.50	295.00	1,732.5	190.1	-154.9	236.4	1.02	-0.35	4.07
1,848.0	14.20	298.10	1,816.0	199.3	-173.3	256.7	1.19	0.81	3.60
1,933.0	14.20	295.80	1,898.4	208.8	-191.9	277.4	0.66	0.00	-2.71
2,019.0	14.30	297.10	1,981.7	218.2	-210.8	298.3	0.39	0.12	1.51
2,104.0	14.50	297.10	2,064.1	227.8	-229.7	319.2	0.24	0.24	0.00
2,190.0	13.00	293.70	2,147.6	236.6	-248.1	339.3	1.98	-1.74	-3.95
2,276.0	13.90	299.50	2,231.3	245.6	-266.0	359.1	1.88	1.05	6.74
2,361.0	14.20	300.90	2,313.7	256.0	-283.8	379.6	0.53	0.35	1.65
2,447.0	13.90	299.00	2,397.1	266.4	-301.9	400.4	0.64	-0.35	-2.21
2,532.0	14.00	303.40	2,479.6	277.0	-319.4	420.8	1.25	0.12	5.18
2,618.0	14.00	302.70	2,563.1	288.4	-336.8	441.6	0.20	0.00	-0.81
2,704.0	14.50	306.40	2,646.4	300.4	-354.2	462.8	1.21	0.58	4.30
2,789.0	16.40	305.90	2,728.4	313.7	-372.5	485.4	2.24	2.24	-0.59
2,875.0	16.20	306.00	2,810.9	327.9	-392.1	509.5	0.23	-0.23	0.12
2,960.0	15.70	306.20	2,892.6	341.7	-410.9	532.9	0.59	-0.59	0.24
3,046.0	15.00	306.70	2,975.6	355.2	-429.3	555.6	0.83	-0.81	0.58
3,132.0	13.00	306.00	3,059.0	367.5	-446.0	576.4	2.33	-2.33	-0.81
3,217.0	13.80	300.60	3,141.7	378.3	-462.5	596.1	1.75	0.94	-6.35
3,303.0	13.90	299.40	3,225.2	388.6	-480.3	616.6	0.35	0.12	-1.40
3,388.0	13.20	300.10	3,307.8	398.5	-497.6	636.4	0.85	-0.82	0.82
3,474.0	12.90	296.40	3,391.6	407.7	-514.7	655.7	1.03	-0.35	-4.30
3,560.0	12.80	295.30	3,475.5	416.0	-531.9	674.5	0.31	-0.12	-1.28
3,645.0	13.20	303.10	3,558.3	425.3	-548.5	693.5	2.12	0.47	9.18
3,731.0	13.50	303.20	3,642.0	436.2	-565.2	713.4	0.35	0.35	0.12
3,816.0	13.60	312.20	3,724.6	448.3	-580.9	733.2	2.48	0.12	10.59
3,902.0	14.30	310.30	3,808.1	462.0	-596.5	753.8	0.97	0.81	-2.21
3,988.0	15.70	301.80	3,891.1	475.0	-614.5	776.0	3.03	1.63	-9.88
4,073.0	15.50	301.30	3,973.0	487.0	-633.9	798.8	0.28	-0.24	-0.59
4,159.0	15.00	300.90	4,056.0	498.6	-653.3	821.4	0.59	-0.58	-0.47
4,244.0	13.50	300.80	4,138.4	509.4	-671.3	842.2	1.76	-1.76	-0.12
4,330.0	11.90	300.80	4,222.3	519.0	-687.5	861.1	1.86	-1.86	0.00
4,416.0	11.30	299.90	4,306.5	527.8	-702.4	878.3	0.73	-0.70	-1.05
4,501.0	9.70	301.60	4,390.1	535.7	-715.7	893.7	1.92	-1.88	2.00
4,587.0	8.70	300.10	4,475.0	542.8	-727.5	907.4	1.20	-1.16	-1.74
4,672.0	8.40	301.10	4,559.0	549.2	-738.4	920.0	0.39	-0.35	1.18
4,758.0	7.60	300.90	4,644.2	555.3	-748.7	932.0	0.93	-0.93	-0.23
4,844.0	6.20	298.80	4,729.6	560.5	-757.6	942.3	1.65	-1.63	-2.44
4,929.0	4.00	290.40	4,814.2	563.7	-764.4	949.7	2.73	-2.59	-9.88
5,015.0	3.40	275.10	4,900.0	565.0	-769.8	954.8	1.34	-0.70	-17.79
5,100.0	3.20	252.80	4,984.9	564.5	-774.6	958.4	1.52	-0.24	-26.24
5,186.0	2.00	272.30	5,070.8	563.9	-778.4	961.1	1.71	-1.40	22.67
5,272.0	1.70	281.80	5,156.8	564.2	-781.1	963.5	0.50	-0.35	11.05
5,443.0	1.10	330.80	5,327.7	566.2	-784.4	967.3	0.75	-0.35	28.66
5,614.0	1.00	282.80	5,498.7	567.9	-786.6	970.2	0.50	-0.06	-28.07
5,715.2	0.59	300.50	5,599.9	568.4	-788.0	971.5	0.47	-0.40	17.49

Company:	EnCana Oil & Gas Weld County CO	Local Co-ordinate Reference:	Well Aristocrat Angus 6-0-8
Project:	SEC.8-T3N-R65W	TVD Reference:	WELL @ 4874.0ft (Original Well Elev)
Site:	Aristocrat Angus 6-0-8 Pad Sec.8-T3N-R65W	MD Reference:	WELL @ 4874.0ft (Original Well Elev)
Well:	Aristocrat Angus 6-0-8	North Reference:	True
Wellbore:	Wellbore #1	Survey Calculation Method:	Minimum Curvature
Design:	Wellbore #1	Database:	Landmark

Survey

Measured Depth (ft)	Inclination (°)	Azimuth (°)	Vertical Depth (ft)	+N-S (ft)	+E-W (ft)	Vertical Section (ft)	Dogleg Rate (°/100ft)	Build Rate (°/100ft)	Turn Rate (°/100ft)
TARGET BHL 50'FNL, 1300'FEL									
5,785.0	0.40	332.10	5,669.7	568.8	-788.4	972.1	0.47	-0.27	45.29
5,956.0	0.40	263.90	5,840.7	569.3	-789.2	973.1	0.26	0.00	-39.88
6,128.0	0.70	294.30	6,012.7	569.6	-790.8	974.6	0.24	0.17	17.67
6,299.0	1.30	284.90	6,183.6	570.6	-793.6	977.4	0.36	0.35	-5.50
6,470.0	1.20	298.40	6,354.6	571.9	-797.1	981.0	0.18	-0.06	7.89
6,641.0	1.10	303.20	6,525.6	573.7	-800.0	984.4	0.08	-0.06	2.81
6,812.0	1.00	328.40	6,696.5	575.8	-802.2	987.4	0.27	-0.06	14.74
6,984.0	1.00	328.70	6,868.5	578.4	-803.7	990.2	0.00	0.00	0.17
7,062.9	1.12	317.31	6,947.4	579.5	-804.6	991.6	0.31	0.15	-14.43
TARGET CIRCLE 50'FNL & 1300'FEL									
7,155.0	1.30	307.10	7,039.5	580.8	-806.1	993.5	0.31	0.20	-11.09
7,326.0	1.10	115.40	7,210.5	581.3	-806.1	993.8	1.40	-0.12	98.42
7,515.0	1.10	325.40	7,399.5	582.0	-805.5	993.8	1.12	0.00	-79.37
7,557.0	1.10	325.40	7,441.5	582.7	-806.0	994.5	0.00	0.00	0.00

Checked By: _____ Approved By: _____ Date: _____