

KOCH EXPLORATION COMPANY

CONSTRUCTION LAYOUT FOR

AHU WYATT #25-43 SWD

SECTION 25, T2N, R97W, 6th P.M.

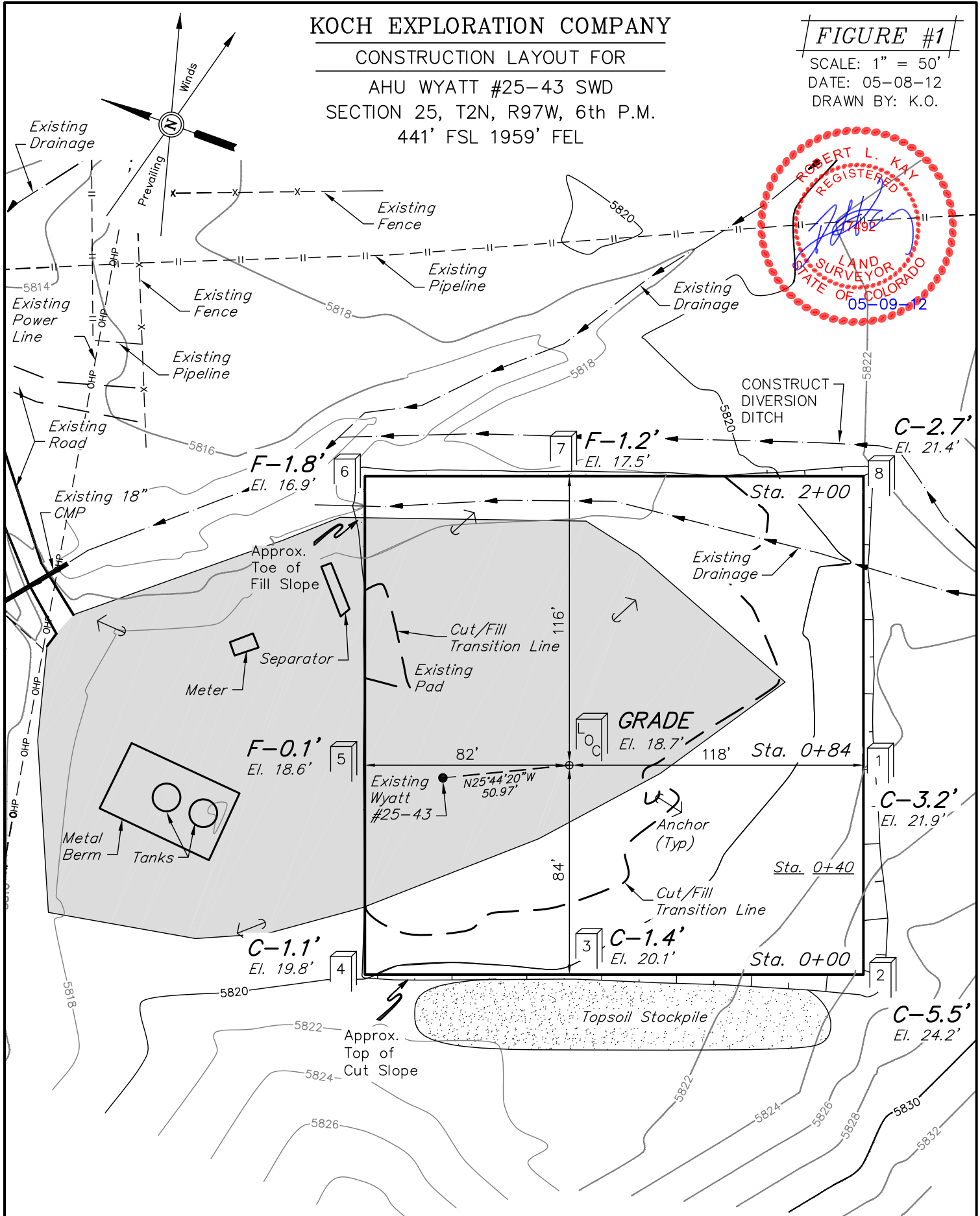
441' FSL 1959' FEL

FIGURE #1

SCALE: 1" = 50'

DATE: 05-08-12

DRAWN BY: K.O.



Elev. Ungraded Ground At Loc. Stake = **5818.7'**
 FINISHED GRADE ELEV. AT LOC. STAKE = **5818.7'**

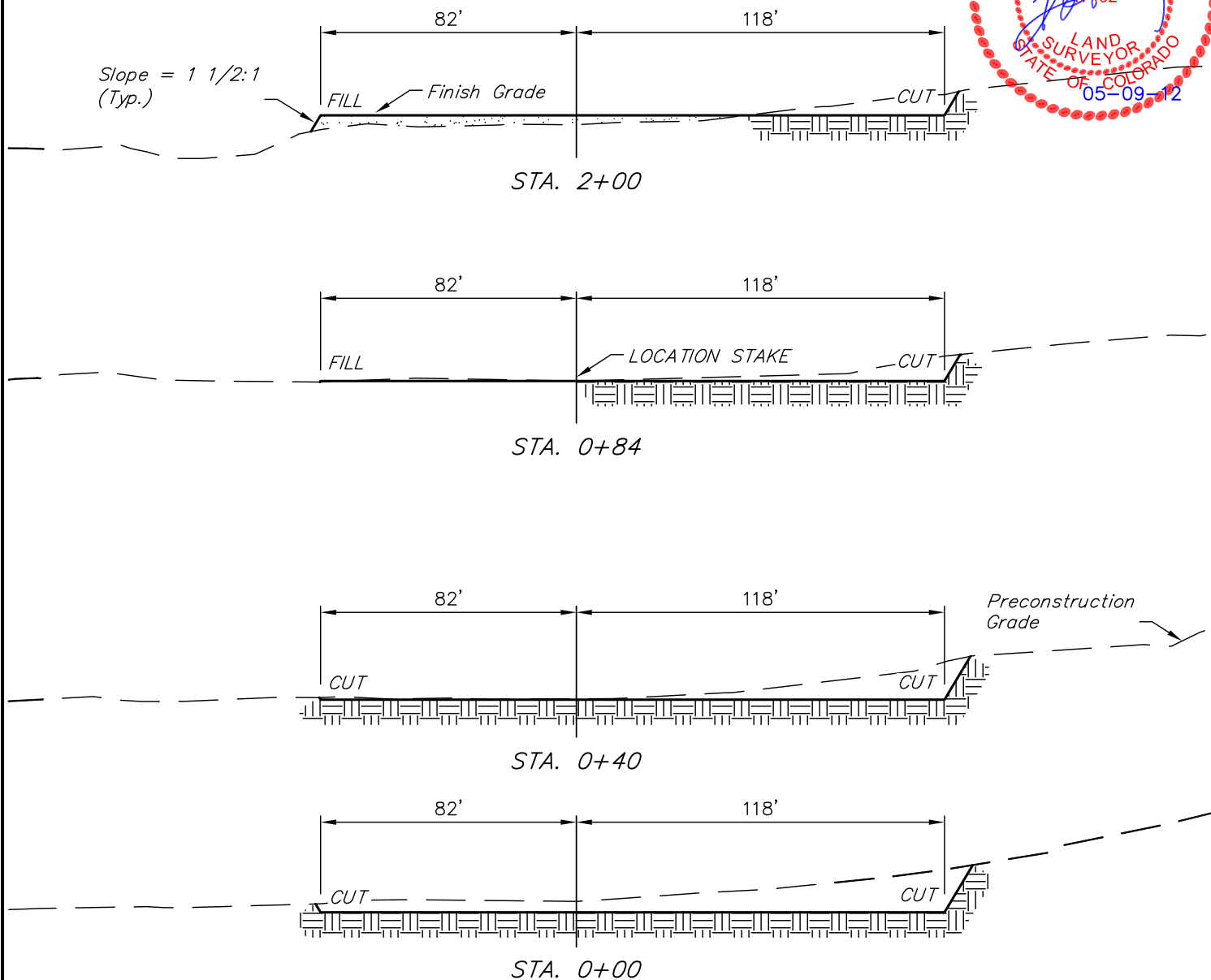
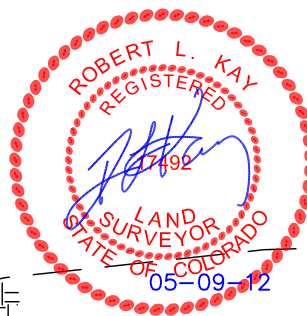
UINTAH ENGINEERING & LAND SURVEYING
 85 So. 200 East * Vernal, Utah 84078 * (435) 789-1017

1" = 20'
X-Section
Scale
1" = 50'

DATE: 05-08-12
DRAWN BY: K.O.

KOCH EXPLORATION COMPANY
CONSTRUCTION LAYOUT CROSS SECTIONS FOR
AHU WYATT #25-43 SWD
SECTION 25, T2N, R97W, 6th P.M.
441' FSL 1959' FEL

FIGURE #2



APPROXIMATE ACREAGES
EXISTING DISTURBANCE
WITHIN PROPOSED WELL SITE = ± 0.398 ACRES
REMAINING PROPOSED
WELL SITE DISTURBANCE = ± 0.585 ACRES
TOTAL = ± 0.983 ACRES

* NOTE:
FILL QUANTITY INCLUDES
5% FOR COMPACTION

APPROXIMATE YARDAGES

(6") Topsoil Stripping = 790 Cu. Yds.
(New Construction only)
Remaining Location = 920 Cu. Yds.
TOTAL CUT = 1,710 CU. YDS.
FILL = 340 CU. YDS.

EXCESS MATERIAL = 1,370 Cu. Yds.
Topsoil = 790 Cu. Yds.
EXCESS UNBALANCE = 580 Cu. Yds.
(After Interim Rehabilitation)

UINTAH ENGINEERING & LAND SURVEYING
85 So. 200 East * Vernal, Utah 84078 * (435) 789-1017