

# KOCH EXPLORATION COMPANY

## AHU WYATT #25-43 SWD

LOCATED IN RIO BLANCO COUNTY, COLORADO

SECTION 25, T2N, R97W, 6th P.M.

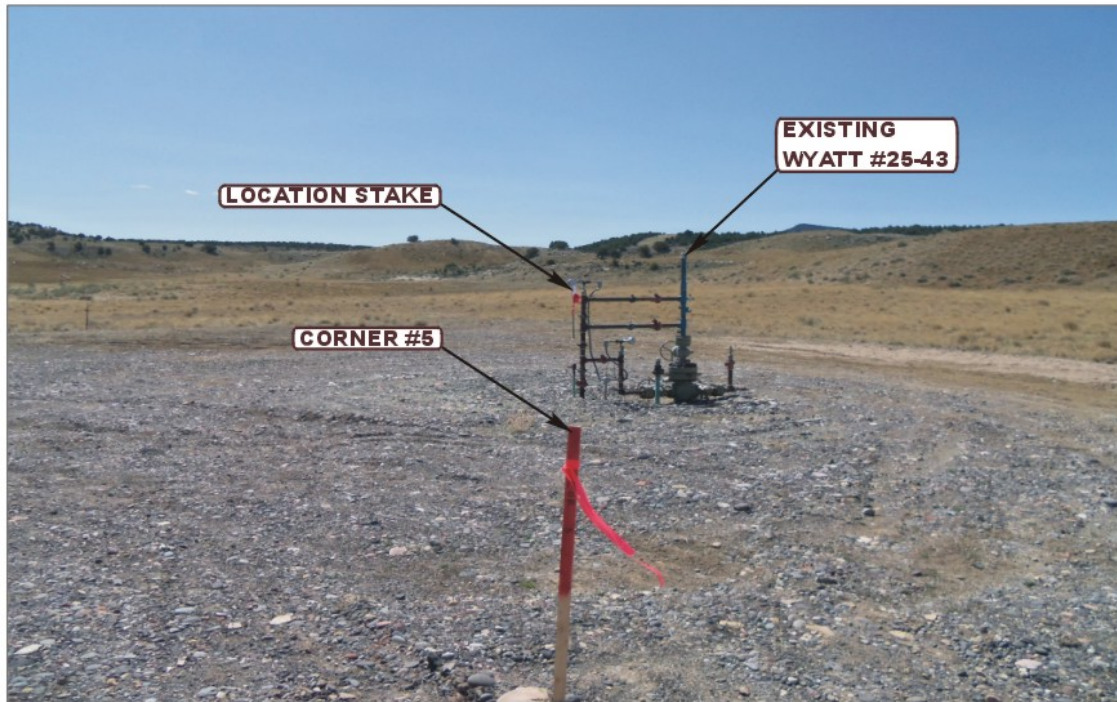


PHOTO: VIEW FROM CORNER #5 TO LOCATION STAKE

CAMERA ANGLE: SOUTHEASTERLY



PHOTO: VIEW OF EXISTING ACCESS

CAMERA ANGLE: SOUTHWESTERLY



- Since 1964 -

**UELS**

Uintah Engineering & Land Surveying  
85 South 200 East Vernal, Utah 84078  
(435) 789-1017 \* FAX (435) 789-1813

LOCATION PHOTOS

05 01 12  
MONTH DAY YEAR

PHOTO

P1

TAKEN BY: B.H.

DRAWN BY: C.I.

REVISED: 00-00-00



# KOCH EXPLORATION COMPANY

## AHU WYATT #25-43 SWD

LOCATED IN RIO BLANCO COUNTY, COLORADO

SECTION 25, T2N, R97W, 6th P.M.



PHOTO: VIEW OF LOCATION STAKE

CAMERA ANGLE: NORTHERLY



PHOTO: VIEW OF LOCATION STAKE

CAMERA ANGLE: EASTERLY



Uintah Engineering & Land Surveying  
85 South 200 East Vernal, Utah 84078  
435-789-1017 FAX (435) 789-1813

LOCATION PHOTOS

05 01 12  
MONTH DAY YEAR

PHOTO  
P2

TAKEN BY: B.H.

DRAWN BY: C.I.

REVISED: 00-00-00



# KOCH EXPLORATION COMPANY

## AHU WYATT #25-43 SWD

LOCATED IN RIO BLANCO COUNTY, COLORADO

SECTION 25, T2N, R97W, 6th P.M.



PHOTO: VIEW OF LOCATION STAKE

CAMERA ANGLE: SOUTHERLY



PHOTO: VIEW OF LOCATION STAKE

CAMERA ANGLE: WESTERLY



**UELS** Uintah Engineering & Land Surveying  
85 South 200 East Vernal, Utah 84078  
435-789-1017 FAX (435) 789-1813

LOCATION PHOTOS

05 01 12  
MONTH DAY YEAR

PHOTO  
P3

TAKEN BY: B.H.

DRAWN BY: C.I.

REVISED: 00-00-00