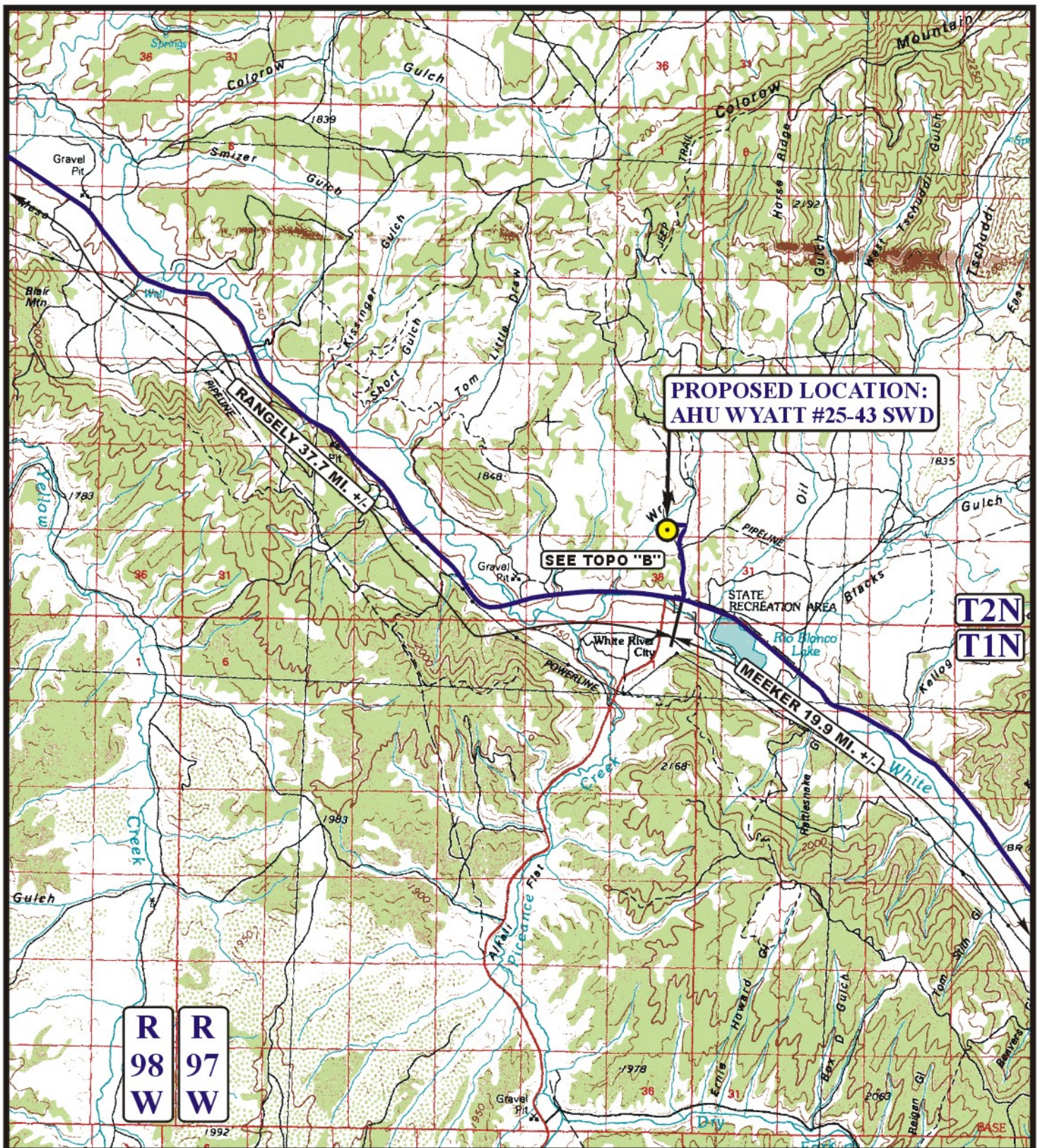


KOCH EXPLORATION COMPANY  
AHU WYATT #25-43 SWD  
SECTION 25, T2N, R97W, 6<sup>th</sup> P.M.

PROCEED IN A EASTERLY, THEN SOUTHEASTERLY, THEN EASTERLY DIRECTION FROM RANGELY, COLORADO ALONG HIGHWAY 64 APPROXIMATELY 37.7 MILES TO THE JUNCTION OF THIS ROAD AND COUNTY ROAD 71 TO THE NORTH; TURN LEFT AND PROCEED IN A NORTHERLY DIRECTION APPROXIMATELY 0.9 MILES TO THE JUNCTION OF THIS ROAD AND AN EXISTING ROAD TO THE WEST; TURN LEFT AND PROCEED IN A WESTERLY, THEN SOUTHWESTERLY DIRECTION APPROXIMATELY 0.2 MILES TO THE EXISTING WYATT #25-43 AND THE PROPOSED LOCATION.

TOTAL DISTANCE FROM RANGELY, COLORADO TO THE PROPOSED LOCATION IS APPROXIMATELY 38.8 MILES.





# LEGEND:

PROPOSED LOCATION



**Uintah Engineering & Land Surveying**  
 85 South 200 East Vernal, Utah 84078  
 (435) 789-1017 \* FAX (435) 789-1813



# KOCH EXPLORATION COMPANY

**AHU WYATT #25-43 SWD**  
**SECTION 25, T2N, R97W, 6th P.M.**  
**441' FSL 1959' FEL**

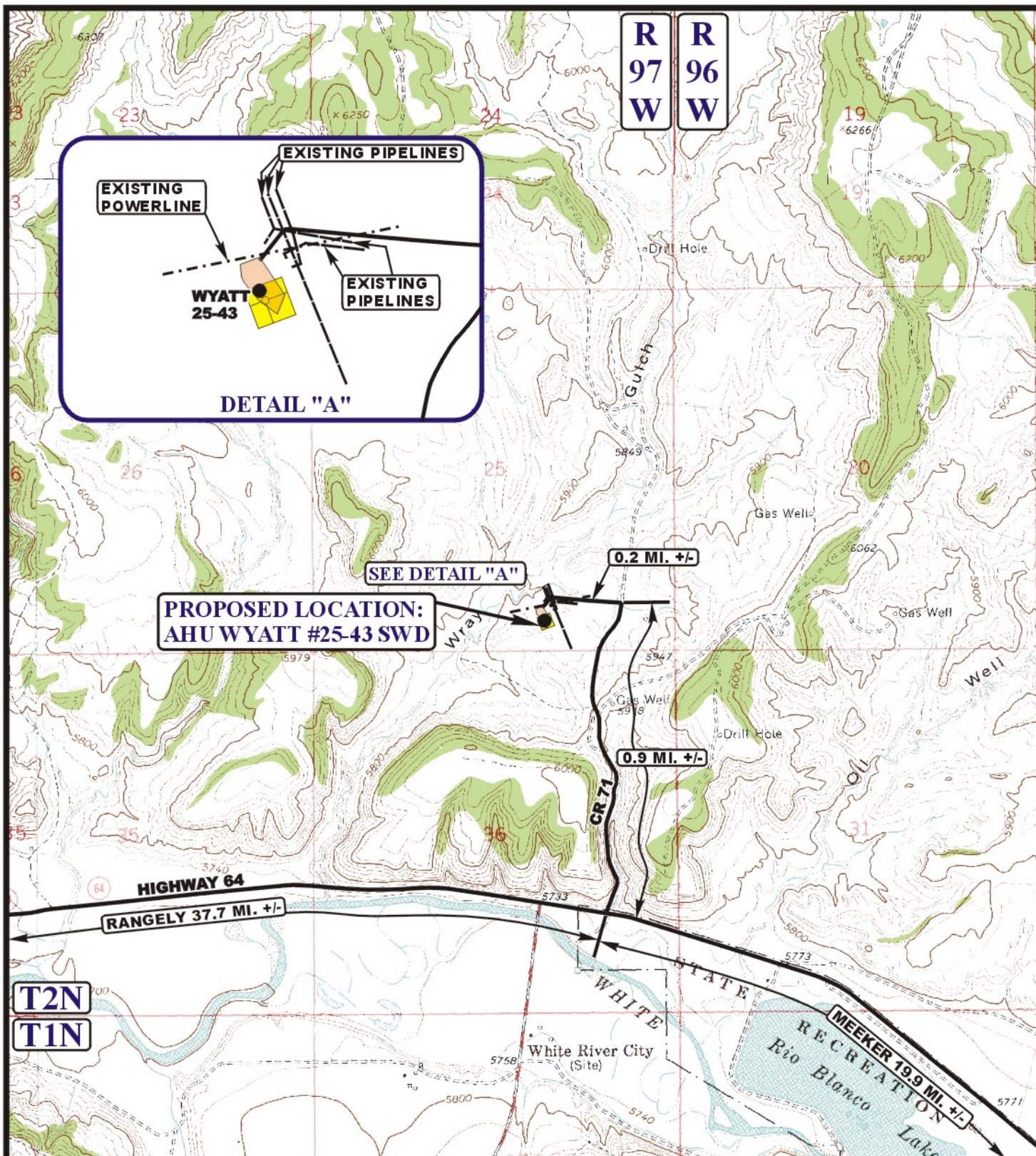
**ACCESS ROAD**  
**M A P**

**05 01 12**  
 MONTH DAY YEAR

SCALE: 1:100,000 DRAWN BY: C.I. REVISED: 00-00-00







**LEGEND:**

**KOCH EXPLORATION COMPANY**

**AHU WYATT #25-43 SWD**

**SECTION 25, T2N, R97W, 6th P.M.**

**441' FSL 1959' FEL**



**Uintah Engineering & Land Surveying**  
 85 South 200 East Vernal, Utah 84078  
 (435) 789-1017 \* FAX (435) 789-1813



**ACCESS ROAD**  
**M A P**

**05 01 12**  
 MONTH DAY YEAR

SCALE: 1" = 2000' DRAWN BY: C.I. REVISED: 00-00-00

**B**  
**TOPO**