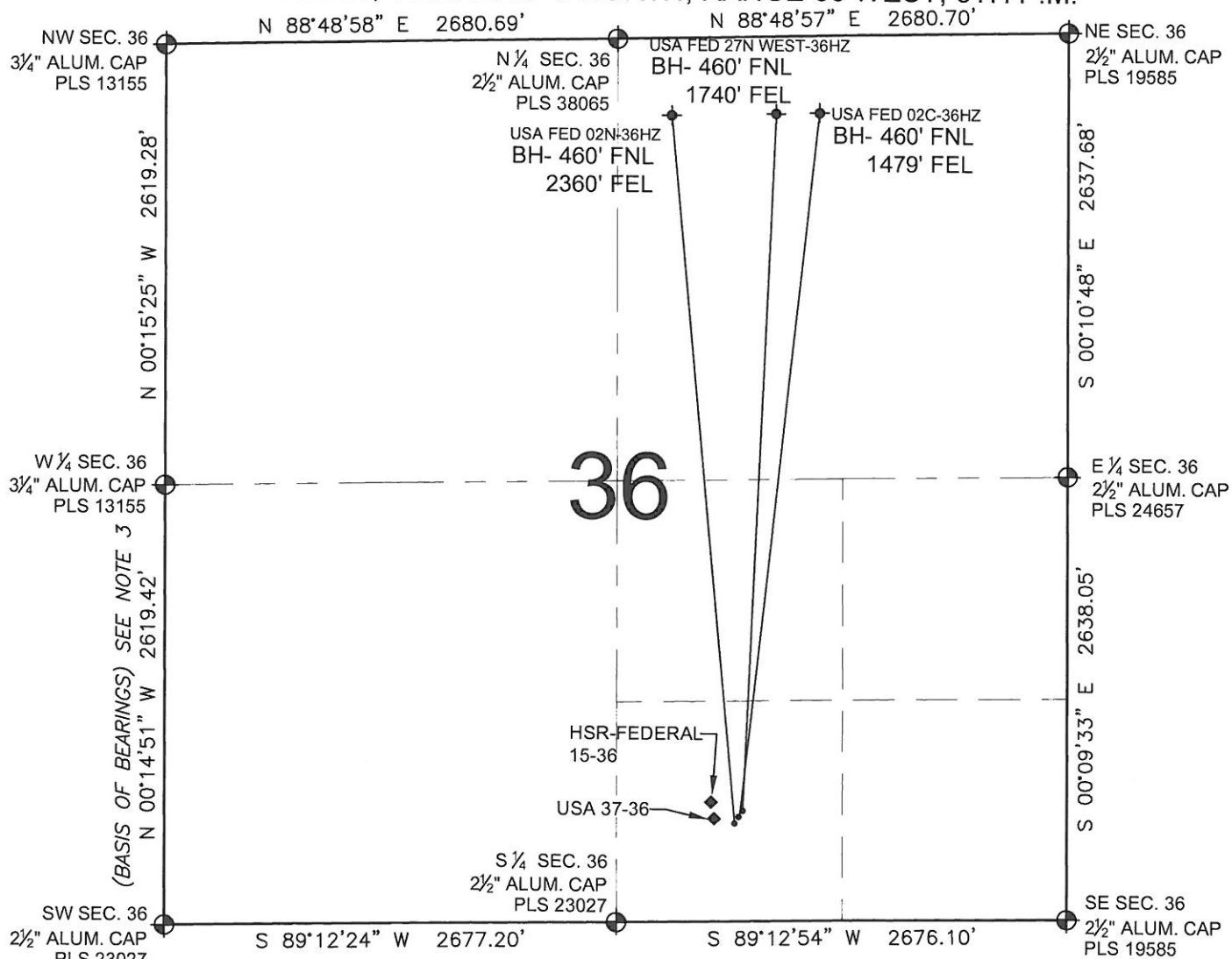


# USA FED 02N-36HZ MULTI-WELL PLAN

SECTION 36, TOWNSHIP 3 NORTH, RANGE 66 WEST, 6TH P.M.



## LEGEND

- ⊕ = EXISTING MONUMENT    ♦ = BOTTOM HOLE    BH= BOTTOM HOLE  
 ● = PROPOSED WELL    ◆ = EXISTING WELL

## NOTES:

- THIS FIELD SURVEY CONFORMS TO THE MINIMUM STANDARDS SET BY THE C.O.G.C.C., RULE NO. 215
- HORIZONTAL POSITIONS AND ORTHOMETRIC ELEVATIONS SHOWN AT THE WELL HEAD, ARE BASED ON GPS-RTK POSITIONS DERIVED FROM MINIMUM 2-HOUR STATIC OBSERVATIONS CORRECTED BY THE NATIONAL GEODETIC SURVEY ONLINE POSITIONING USER SERVICE, O.P.U.S. DATUM: HORIZONTAL = NAD83/2007, VERTICAL = NAVD88
- THE BASIS OF BEARINGS ARE STATE PLANE COORDINATE SYSTEM GRID BEARINGS SHOWN HEREON BETWEEN THE DESCRIBED THE MONUMENTS SHOWN HEREON.
- GRID DISTANCES ARE SHOWN, AS MEASURED IN THE FIELD, WITH TIES TO WELLS MEASURED PERPENDICULAR TO SECTION LINES.

## NOTES:

USA FED 02N-36HZ TO BE AT 611' FSL, 1963' FEL.  
 BOTTOM HOLE AT 460' FNL & 2360' FEL.  
 USA FED 02C-36HZ TO BE AT 636' FSL, 1947' FEL.  
 BOTTOM HOLE AT 460' FNL & 1479' FEL.  
 USA FED 27N WEST-36HZ TO BE AT 661' FSL, 1931' FEL.  
 BOTTOM HOLE AT 460' FNL & 1740' FEL.  
 USA 37-36 IS 620' FSL, 2010' FEL.  
 HSR-FEDERAL 15-36 IS 670' FSL, 2022' FEL.

PREPARED BY:

**PFS**

Petroleum Field Services, LLC  
1801 W. 13th Ave.  
Denver, CO 80204



KERR-MCGEE OIL & GAS ONSHORE LP

FIELD DATE:  
01-13-12

DRAWING DATE:  
06-05-12

BY:  
SMF

PAD NAME:  
USA FED 3 PAD

SURFACE LOCATION:

WELD COUNTY, COLORADO

SW 1/4 SE 1/4, SEC. 36, T3N, R66W, 6TH P.M.



0 500 1000

SCALE: 1"=1000'