

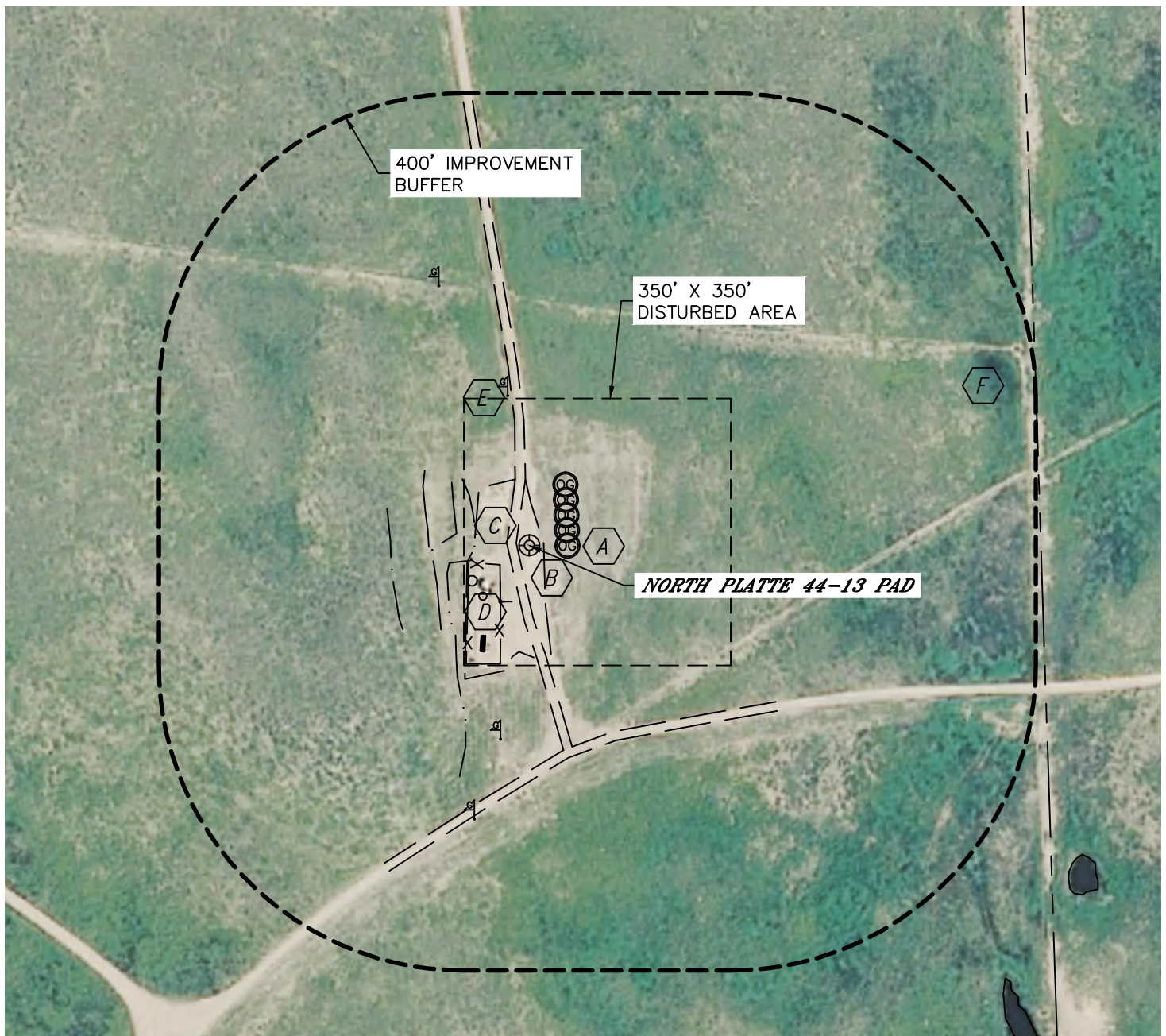


Lat40°, Inc. 1635 Foxtrail Drive, Suite 325 Loveland, CO 970-776-3321

LOCATION DRAWING


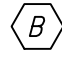
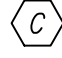
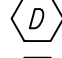

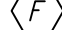
NORTH PLATTE 44-13 PAD

SECTION: 13
TOWNSHIP: 5N
RANGE: 63W

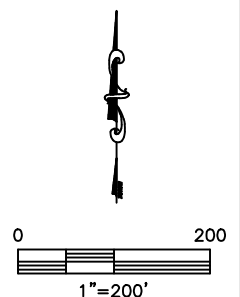


IMPROVEMENTS:

(MEASURED FROM THE EXISTING NORTH PLATTE 44-13 LOCATION)

-  PROPOSED WELL 50' E
-  EDGE OF GRAVEL 19' E
-  FIELD ROAD 16' W, 267' S
-  EX. PRODUCTION FACILITIES 81', 85', & 132' SW
-  GAS MARKER 198' N, 361' NW, 257' S, 366' SW
-  LOW AREA 651' NW

NEAREST: BUILDING 1907 SE, PUBLIC ROAD 5280'+,
ABOVE GROUND UTILITY 1791' E, RAILROAD 5280'+, PROPERTY LINE 671' E



DATE: rev 1/25/2013
PROJECT#: 2012003