

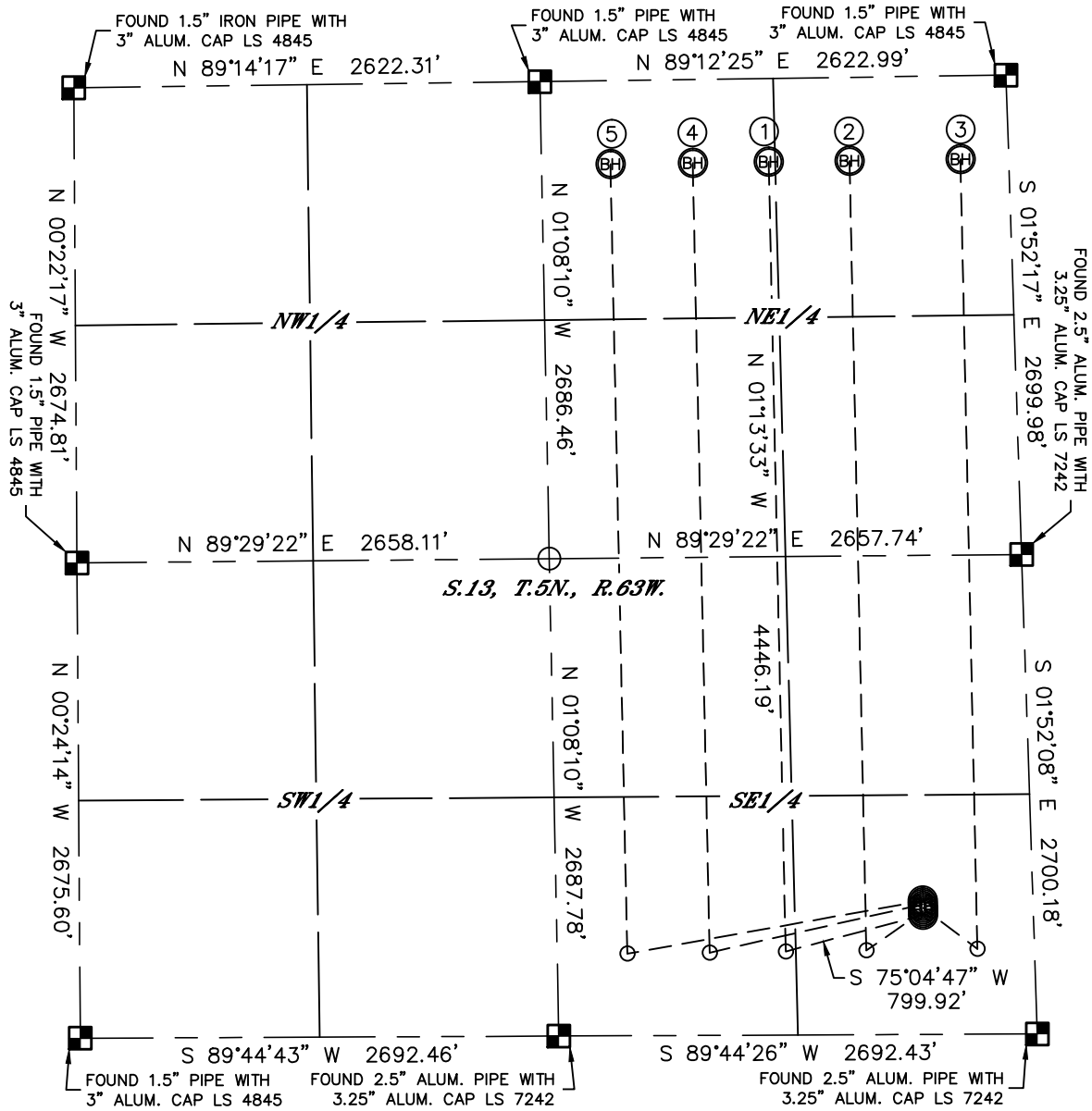


# MULTI-WELL PLAN

## NORTH PLATTE 44-13 PAD

THIS MAP DOES NOT REPRESENT A BOUNDARY SURVEY

SECTION: 13  
TOWNSHIP: 5N  
RANGE: 63W

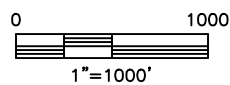


- ① -SURFACE LOCATION-  
NORTH PLATTE  
T-P-13HNB  
672' FSL  
621' FEL  
LAT-40.39369°N  
LONG-104.37734°W
- ② -SURFACE LOCATION-  
NORTH PLATTE A2-13  
692' FSL  
621' FEL  
LAT-40.39374°N  
LONG-104.37734°W
- ③ -SURFACE LOCATION-  
NORTH PLATTE A3-13  
712' FSL  
621' FEL  
LAT-40.39380°N  
LONG-104.37734°W
- ④ -SURFACE LOCATION-  
NORTH PLATTE A4-13  
732' FSL  
621' FEL  
LAT-40.39385°N  
LONG-104.37734°W
- ⑤ -SURFACE LOCATION-  
NORTH PLATTE A5-13  
752' FSL  
621' FEL  
LAT-40.39391°N  
LONG-104.37734°W



LEGEND

- = ALIQUOT MONUMENT AS DESCRIBED
- = CALCULATED POSITION





Lat40°, Inc. 1635 Foxtrail Drive, Suite 325 Loveland, CO 970-776-3321

# MULTI-WELL PLAN

## NORTH PLATTE 44-13 PAD

SECTION: 13  
TOWNSHIP: 5N  
RANGE: 63W

