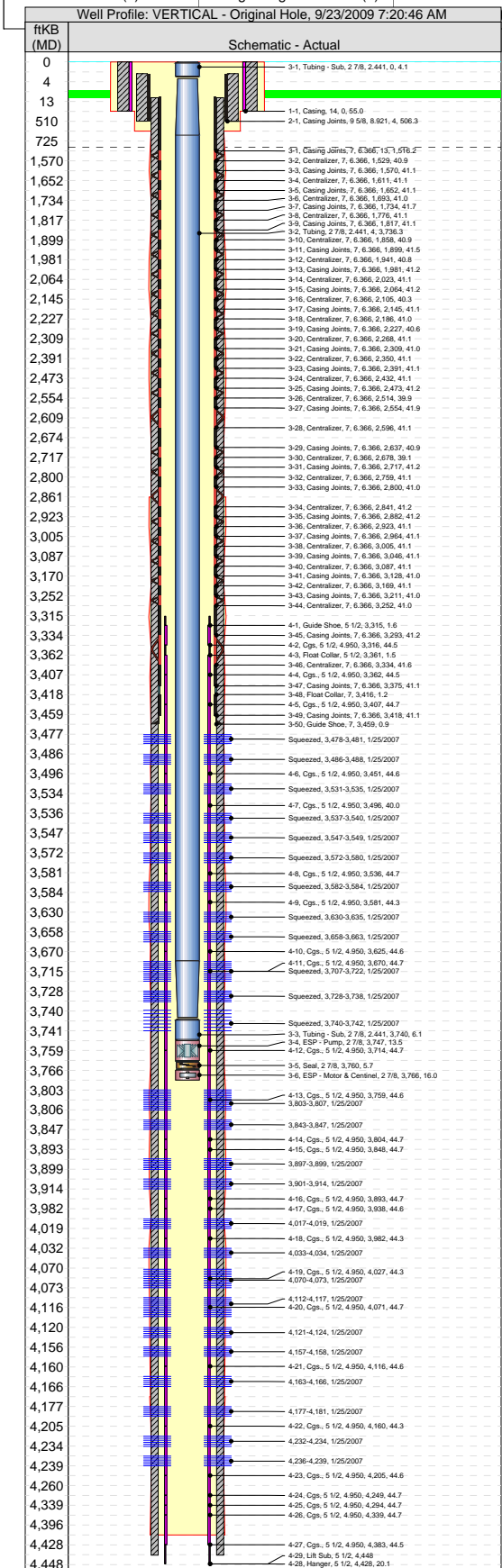




Well Name: Boston Federal 33-2

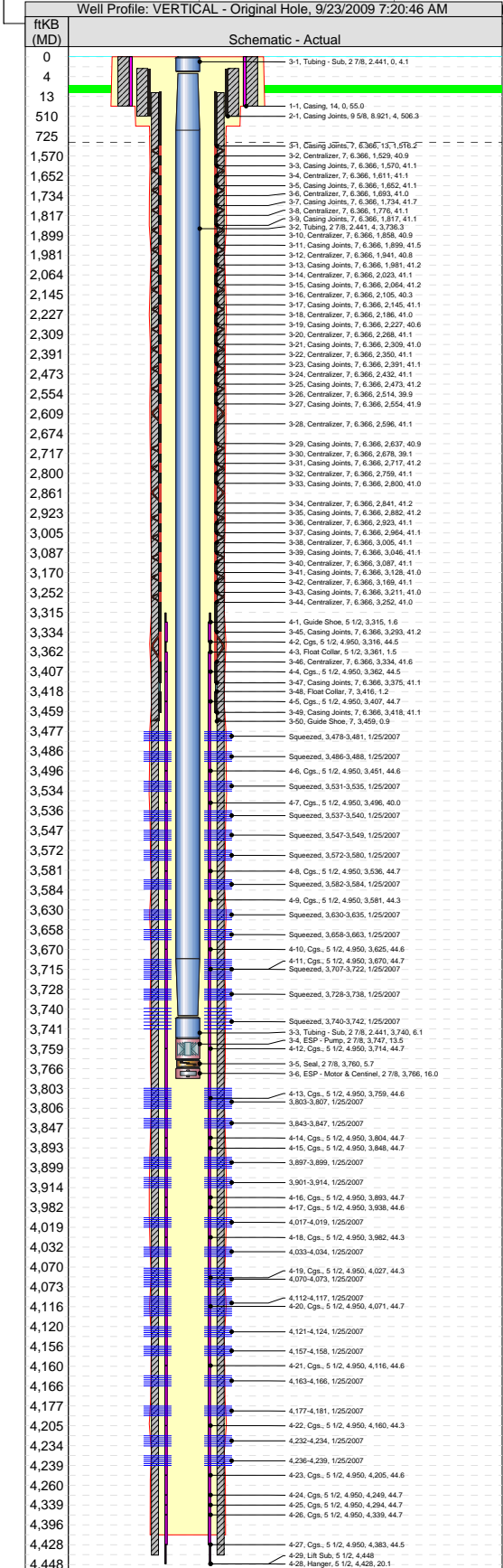
API/UWI 05-081-07350-0000	Surface Legal Location	Field Name LAY CREEK	License/Lease Number COC 63308	State COLORADO	Well Profile VERTICAL
Ground Elevation (ft)	Casing Flange Elevation (ft)	KB-Ground Distance (ft)	KB-CF (ft)	Spud Date	TD Date
Drilling Rig Release Date					



Wellbore								
Wellbore Name		Profile Type		Kick Off Depth (ftKB)		Vertical Section Direction (°)		
Original Hole		Vertical						
Section		Size (in)		Act Top (ftKB)		Act Btm (ftKB)		
Conductor		18		0.0		55.0		
Surface		12 1/4		55.0		520.0		
Production		8 3/4		520.0		725.0		
Production		8 3/4		725.0		2,861.0		
Production		8 3/4		2,861.0		4,170.0		
Production		8 3/4		4,170.0		4,400.0		
Liner		5 1/2		4,432.0		4,432.0		
Wellhead								
Type								
Description		Make		Model		SN		Top WP (psi)
Last Mud Check								
Date	Type	Depth (ftKB)	Dens (lb/gal)	Vis (s/qt)	Gel (10s) (lb/100ft²)	Gel (10m) (lb/100ft²)	PV (cp)	YP (lb/100ft²)
Casing								
Casing Description			Run Date		Set Depth (ftKB)		Wellbore	
Surface			11/15/2006 00:00		510.3		Original Hole	
Centralizers				Scratchers				
1,2,3,5,7,9								
Jts	Item Description	OD (in)	ID (in)	Wt (lbs/ft)	Grade	Len (ft)	Top (ftKB)	Btm (ftKB)
15	Casing Joints	9 5/8	8.921	36.00	J-55	506.30	4.0	510.3
Cement: Surface Casing Cement								
Cementing Start Date		Cementing End Date		Wellbore				
11/15/2006		11/15/2006		Original Hole				
Evaluation Method		Cement Evaluation Results						
Comment								
Cement surface casing with 52 bbls cement, 243 sx, 75% excess, displaced with 36 bbls water. Put 21 bbls good cement to pit.								
Cement Stages: Surface Casing Cement								
Top (ftKB)	Bottom (ftKB)	Full Return?	Cmnt Rtrn...	Top Plug?	Bottom Plug?			
4.0	510.3	Yes	21.0	No	Yes			
Q (start) (bbl/min)	Q (end) (bbl/min)	Q (avg) (bbl/min)		P (final) (psi)		Plug Bump Pressure (psi)		
4	2	3		200.0		700.0		
Pipe Reciprocated?	Stroke (ft)	Reciprocation Rate (spm)		Pipe Rotated?		Pipe RPM (rpm)		
No				No				
Depth tagged (ftKB)	Tag Method	Plug Depth (ftKB)		Drill Out Diameter (in)		Drill Out Date		
Cement Fluids: Surface Casing Cement								
Fluid Type	Fluid Description			Amount (s...	Class	Volume Pumped (bbl)		
Water	Fresh water					30.0		
Estimated Top (ftKB)	Estimated Bottom (ftKB)	Yield (ft³/sack)		Mix H2O Ratio (gal/sack)		Free Water (%)		
4.0	510.0							
Density (lb/gal)	Plastic Viscosity (cp)		Thickening Time (hrs)		1st Compressive Strength (psi)			
8.33								
Cement Fluid Additives								
Add		Type				Conc		
Cement Fluids: Surface Casing Cement								
Fluid Type	Fluid Description			Amount (s...	Class	Volume Pumped (bbl)		
Gel Pill	Gel Pill					20.0		
Estimated Top (ftKB)	Estimated Bottom (ftKB)	Yield (ft³/sack)		Mix H2O Ratio (gal/sack)		Free Water (%)		
4.0	510.0							
Density (lb/gal)	Plastic Viscosity (cp)		Thickening Time (hrs)		1st Compressive Strength (psi)			
Cement Fluid Additives								
Add		Type				Conc		

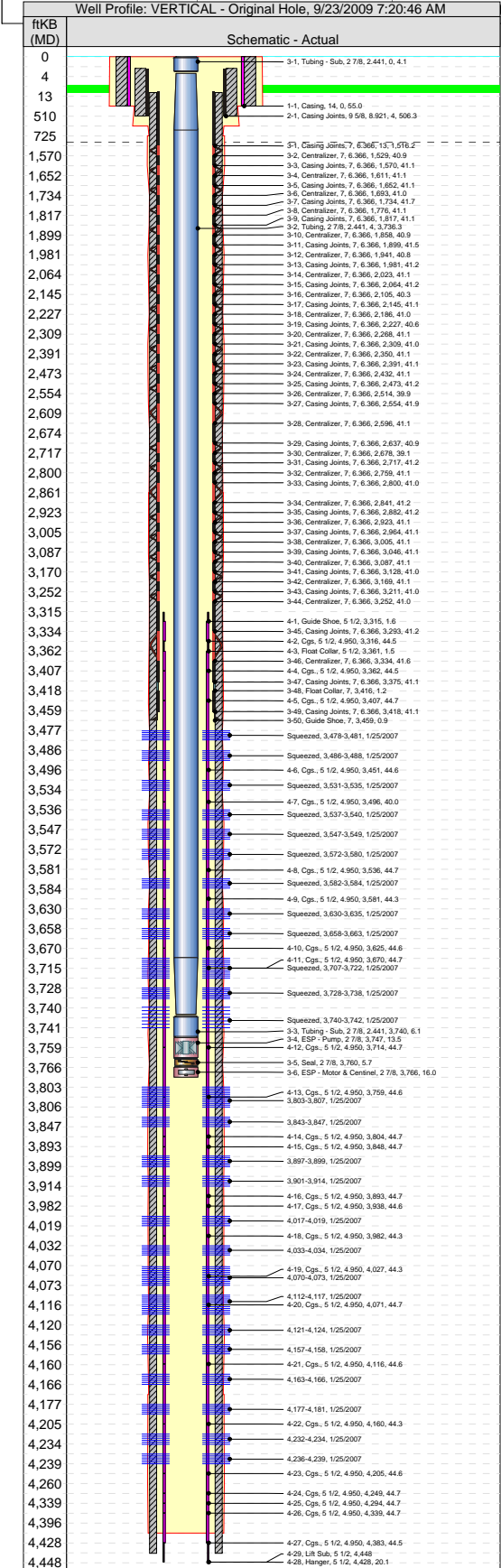
Well Name: Boston Federal 33-2

API/UWI 05-081-07350-0000	Surface Legal Location	Field Name LAY CREEK	License/Lease Number COC 63308	State COLORADO	Well Profile VERTICAL
Ground Elevation (ft)	Casing Flange Elevation (ft)	KB-Ground Distance (ft)	KB-CF (ft)	Spud Date	TD Date
Drilling Rig Release Date					



Well Name: **Boston Federal 33-2**

API/UWI 05-081-07350-0000	Surface Legal Location	Field Name LAY CREEK	License/Lease Number COC 63308	State COLORADO	Well Profile VERTICAL
Ground Elevation (ft)	Casing Flange Elevation (ft)	KB-Ground Distance (ft)	KB-CF (ft)	Spud Date	TD Date
Well Profile: VERTICAL - Original Hole, 9/23/2009 7:20:46 AM					
Drilling Rig Release Date					

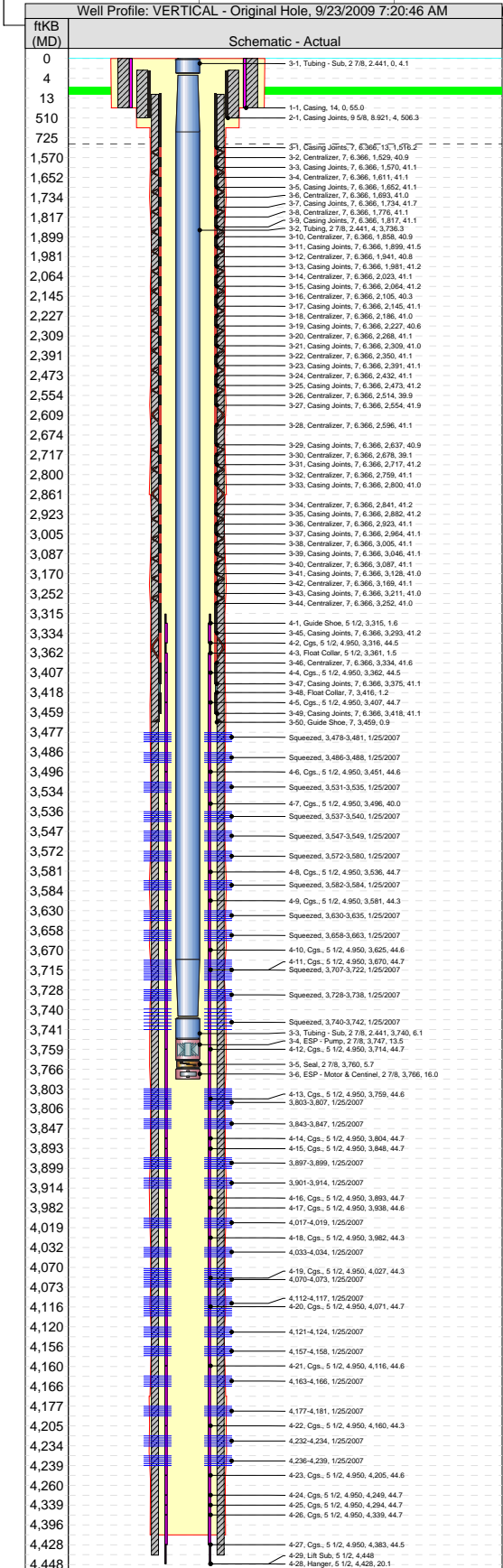






Well Name: **Boston Federal 33-2**

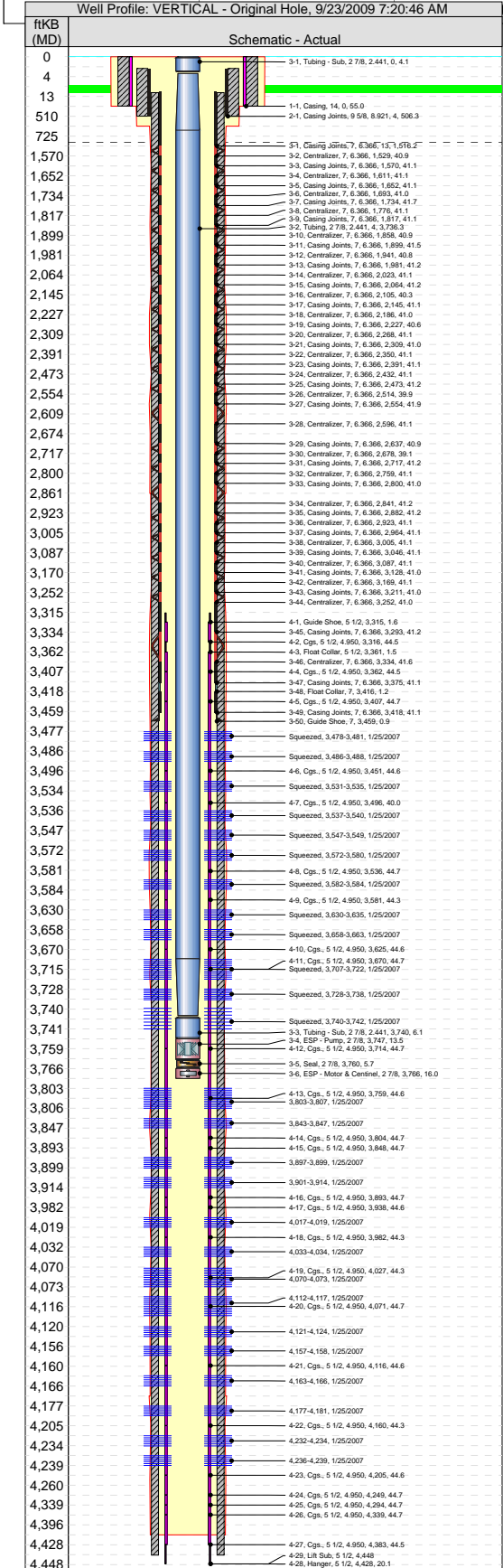
API/UWI 05-081-07350-0000	Surface Legal Location	Field Name LAY CREEK	License/Lease Number COC 63308	State COLORADO	Well Profile VERTICAL
Ground Elevation (ft)	Casing Flange Elevation (ft)	KB-Ground Distance (ft)	KB-CF (ft)	Spud Date	TD Date
Drilling Rig Release Date					



Cement Fluids: Production Casing Cement					
Fluid Type Cement		Fluid Description		Amount (s... Displace	Volume Pumped (bbl)
Estimated Top (ftKB) 131.0		Estimated Bottom (ftKB)	Yield (ft³/sack) 1.62	Mix H20 Ratio (gal/sack) 8.10	Free Water (%)
Density (lb/gal) 8.33		Plastic Viscosity (cp)		Thickening Time (hrs) 6.00	1st Compressive Strength (psi)
Cement Fluid Additives					
Add		Type		Conc	
Cement Stages: Production Casing Cement					
Top (ftKB)		Bottom (ftKB)		Full Return? No	Bottom Plug? No
Q (start) (bbl/min)		Q (end) (bbl/min)		Q (avg) (bbl/min)	Plug Bump Pressure (psi)
Pipe Reciprocated? No		Stroke (ft)		Reciprocation Rate (spm)	Pipe RPM (rpm)
Depth tagged (ftKB)		Tag Method		Plug Depth (ftKB)	Drill Out Date
Cement Fluids: Production Casing Cement					
Fluid Type Water		Fluid Description		Amount (s... Water	Volume Pumped (bbl)
Estimated Top (ftKB)		Estimated Bottom (ftKB)	Yield (ft³/sack)	Mix H20 Ratio (gal/sack)	Free Water (%)
Density (lb/gal) 8.33		Plastic Viscosity (cp)		Thickening Time (hrs)	1st Compressive Strength (psi)
Cement Fluid Additives					
Add		Type		Conc	
Cement Fluids: Production Casing Cement					
Fluid Type LCM Pill		Fluid Description		Amount (s... Gel Pill	Volume Pumped (bbl)
Estimated Top (ftKB)		Estimated Bottom (ftKB)	Yield (ft³/sack)	Mix H20 Ratio (gal/sack)	Free Water (%)
Density (lb/gal) 8.50		Plastic Viscosity (cp)		Thickening Time (hrs)	1st Compressive Strength (psi)
Cement Fluid Additives					
Add		Type		Conc	
Cellophane Flakes		LCM			
Bentonite		Light Weight			
Cement Fluids: Production Casing Cement					
Fluid Type Cement		Fluid Description		Amount (s... Cement	Volume Pumped (bbl)
Estimated Top (ftKB)		Estimated Bottom (ftKB)	Yield (ft³/sack) 1.67	Mix H20 Ratio (gal/sack) 8.00	Free Water (%) 0.00
Density (lb/gal) 13.30		Plastic Viscosity (cp)		Thickening Time (hrs) 4.00	1st Compressive Strength (psi) 1,800.0
Cement Fluid Additives					
Add		Type		Conc	
Fluid Loss Control				1.0	
Class C		Cement			
Pozzolan - Lime		Cement			
Liquid Antifoam Agent		Defoamer			
Cement Fluids: Production Casing Cement					
Fluid Type Displace		Fluid Description		Amount (s... Displace	Volume Pumped (bbl)
Estimated Top (ftKB)		Estimated Bottom (ftKB)	Yield (ft³/sack)	Mix H20 Ratio (gal/sack)	Free Water (%)
Density (lb/gal) 8.33		Plastic Viscosity (cp)		Thickening Time (hrs)	1st Compressive Strength (psi)
Cement Fluid Additives					
Add		Type		Conc	

Well Name: Boston Federal 33-2

API/UWI 05-081-07350-0000	Surface Legal Location	Field Name LAY CREEK	License/Lease Number COC 63308	State COLORADO	Well Profile VERTICAL
Ground Elevation (ft)	Casing Flange Elevation (ft)	KB-Ground Distance (ft)	KB-CF (ft)	Spud Date	TD Date
Well Profile: VERTICAL - Original Hole, 9/23/2009 7:20:46 AM					
Drilling Rig Release Date					



Wellbore			
Wellbore Name	Profile Type	Kick Off Depth (ftKB)	Vertical Section Direction (°)
Original Hole	Vertical		
Section	Size (in)	Act Top (ftKB)	Act Btm (ftKB)
Conductor	18	0.0	55.0
Surface	12 1/4	55.0	520.0
Production	8 3/4	520.0	725.0
Production	8 3/4	725.0	2,861.0
Production	8 3/4	2,861.0	4,170.0
Production	8 3/4	4,170.0	4,400.0
Liner	5 1/2	4,432.0	4,432.0

Wellhead				
Type	Description	Make	Model	SN
				Top WP (psi)

Last Mud Check							
Date	Type	Depth (ftKB)	Dens (lb/gal)	Vis (s/qt)	Gel (10s) (lb/100ft²)	Gel (10m) (lb/100ft²)	YP (lb/100ft²)

Casing			
Casing Description	Run Date	Set Depth (ftKB)	Wellbore
Liner	1/21/2007 10:00	4,448.0	Original Hole
Centralizers			
0.0			

Jts	Item Description	OD (in)	ID (in)	Wt (lbs/ft)	Grade	Len (ft)	Top (ftKB)	Btm (ftKB)
	Guide Shoe	5 1/2		15.50	J-55	1.62	3,314.8	3,316.4
1	Cgs	5 1/2	4.950	15.50	J-55	44.50	3,316.4	3,360.9
	Float Collar	5 1/2	0.000	15.50	J-55	1.45	3,360.9	3,362.3
2	Cgs.	5 1/2	4.950	15.50	J-55	44.46	3,362.3	3,406.8
3	Cgs.	5 1/2	4.950	15.50	J-55	44.68	3,406.8	3,451.5
4	Cgs.	5 1/2	4.950	15.50	J-55	44.64	3,451.5	3,496.1
5	Cgs.	5 1/2	4.950	15.50	J-55	40.04	3,496.1	3,536.2
6	Cgs.	5 1/2	4.950	15.50	J-55	44.68	3,536.2	3,580.8
7	Cgs.	5 1/2	4.950	15.50	J-55	44.34	3,580.8	3,625.2
8	Cgs.	5 1/2	4.950	15.50	J-55	44.64	3,625.2	3,669.8
9	Cgs.	5 1/2	4.950	15.50	J-55	44.67	3,669.8	3,714.5
10	Cgs.	5 1/2	4.950	15.50	J-55	44.67	3,714.5	3,759.2
11	Cgs.	5 1/2	4.950	15.50	J-55	44.65	3,759.2	3,803.8
12	Cgs.	5 1/2	4.950	15.50	J-55	44.66	3,803.8	3,848.5
13	Cgs.	5 1/2	4.950	15.50	J-55	44.66	3,848.5	3,893.1
14	Cgs.	5 1/2	4.950	15.50	J-55	44.66	3,893.1	3,937.8
15	Cgs.	5 1/2	4.950	15.50	J-55	44.60	3,937.8	3,982.4
16	Cgs.	5 1/2	4.950	15.50	J-55	44.30	3,982.4	4,026.7
17	Cgs.	5 1/2	4.950	15.50	J-55	44.32	4,026.7	4,071.0
18	Cgs.	5 1/2	4.950	15.50	J-55	44.68	4,071.0	4,115.7
19	Cgs.	5 1/2	4.950	15.50	J-55	44.64	4,115.7	4,160.3
20	Cgs.	5 1/2	4.950	15.50	J-55	44.32	4,160.3	4,204.7
21	Cgs.	5 1/2	4.950	15.50	J-55	44.63	4,204.7	4,249.3
22	Cgs.	5 1/2	4.950	15.50	J-55	44.67	4,249.3	4,294.0
23	Cgs.	5 1/2	4.950	15.50	J-55	44.72	4,294.0	4,338.7
24	Cgs.	5 1/2	4.950	15.50	J-55	44.73	4,338.7	4,383.4
25	Cgs.	5 1/2	4.950	15.50	J-55	44.48	4,383.4	4,427.9
	Hanger	5 1/2				20.12	4,427.9	4,448.0
	Lift Sub	5 1/2		6.50	N-80		4,448.0	4,448.0

Cement: <Description?>		
Cementing Start Date	Cementing End Date	Wellbore
Evaluation Method	Cement Evaluation Results	
Comment		

Well Name: Boston Federal 33-2

API/UWI 05-081-07350-0000	Surface Legal Location	Field Name LAY CREEK	License/Lease Number COC 63308	State COLORADO	Well Profile VERTICAL
Ground Elevation (ft)	Casing Flange Elevation (ft)	KB-Ground Distance (ft)	KB-CF (ft)	Spud Date	TD Date
Drilling Rig Release Date					

