



December 13, 2012

Department of Natural Resources
Oil and Gas Conservation Commission
The Chancery Building
1120 Lincoln St., Suite 801
Denver, CO 80203

Re: **30 Day Certification Letter - 318A-e**
RALPH 36C-19HZ
Township 1 North, Range 67 West, Section 19: NW/4NW/4
Unit Spacing: 01N-67W-Sec 19 E/2W/2, W/2E/2
Weld County, Colorado

Ladies/Gentlemen:

Kerr McGee Oil and Gas Onshore LP ("KMG") hereby certify to the Director that KMG owns one-hundred percent (100%) of the mineral rights in the proposed spacing unit. Therefore, KMG respectfully requests the Director to approve the boundary well.

If you have any questions or issues regarding this permit, please contact Cheryl Light at (720) 929-6461.

Very truly yours,

KERR-McGEE OIL AND GAS ONSHORE LP

A handwritten signature in cursive script that reads 'Rebecca Heim'.

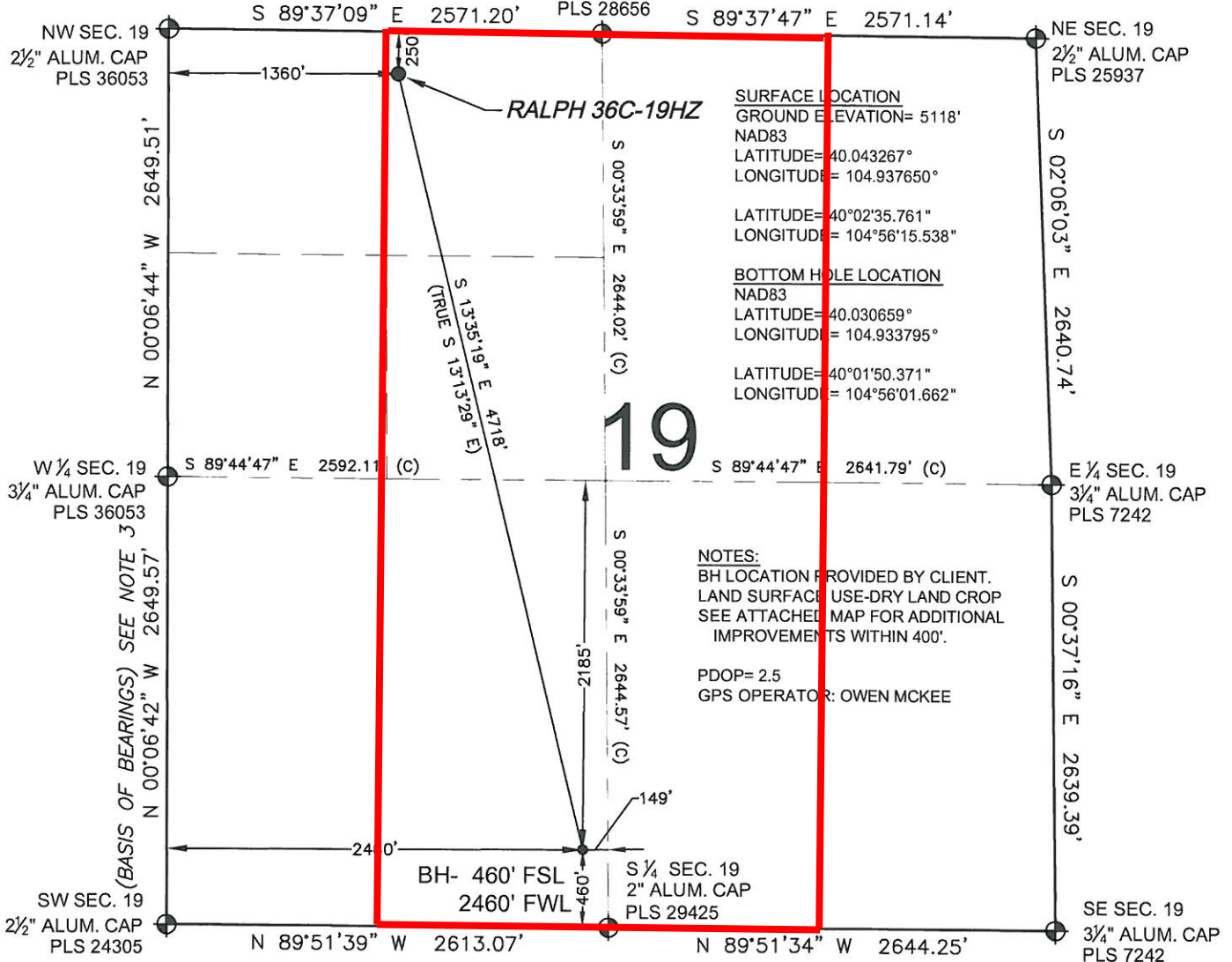
Rebecca Heim
Regulatory Analyst II

PROPOSED SPACING UNIT

WELL LOCATION CERTIFICATE: RALPH 36C-19HZ

SECTION 19, TOWNSHIP 1 NORTH, RANGE 67 WEST, 6TH P.M.

N ¼ SEC. 19
2 ½" ALUM. CAP
PLS 28656



SURFACE LOCATION
GROUND ELEVATION= 5118'
NAD83
LATITUDE= 40.043267°
LONGITUDE= 104.937650°

LATITUDE= 40°02'35.761"
LONGITUDE= 104°56'15.538"

BOTTOM HOLE LOCATION
NAD83
LATITUDE= 40.030659°
LONGITUDE= 104.933795°

LATITUDE= 40°01'50.371"
LONGITUDE= 104°56'01.662"

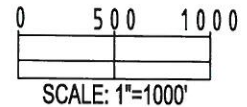
NOTES:
BH LOCATION PROVIDED BY CLIENT.
LAND SURFACE USE- DRY LAND CROP
SEE ATTACHED MAP FOR ADDITIONAL
IMPROVEMENTS WITHIN 400'.

PDOP= 2.5
GPS OPERATOR: OWEN MCKEE

WELL RALPH 36C-19HZ TO BE LOCATED 250' FNL AND 1360' FWL

LEGEND

- ⊕ = EXISTING MONUMENT ⊕ = BOTTOM HOLE BH = BOTTOM HOLE
- = PROPOSED WELL ◆ = EXISTING WELL



NOTES:

1. THIS FIELD SURVEY CONFORMS TO THE MINIMUM STANDARDS SET BY THE C.O.G.C.C., RULE NO. 215
2. HORIZONTAL POSITIONS AND ORTHOMETRIC ELEVATIONS SHOWN AT THE WELL HEAD, ARE BASED ON GPS-RTK POSITIONS DERIVED FROM MINIMUM 2-HOUR STATIC OBSERVATIONS CORRECTED BY THE NATIONAL GEODETIC SURVEY ONLINE POSITIONING USER SERVICE, O.P.U.S. DATUM: HORIZONTAL = NAD83/2007, VERTICAL = NAVD88
3. THE BASIS OF BEARINGS ARE STATE PLANE COORDINATE SYSTEM GRID BEARINGS SHOWN HEREON BETWEEN THE DESCRIBED MONUMENTS SHOWN HEREON.
4. GRID DISTANCES ARE SHOWN, AS MEASURED IN THE FIELD, WITH TIES TO WELLS MEASURED PERPENDICULAR TO SECTION LINES.

I, MARK A. HALL, A LICENSED PROFESSIONAL LAND SURVEYOR IN THE STATE OF COLORADO DO HEREBY CERTIFY TO **KERR-MCGEE OIL & GAS ONSHORE LP**, THAT THE SURVEY AND WELL LOCATION CERTIFICATE SHOWN HEREON WERE DONE BY ME OR UNDER MY DIRECT SUPERVISION AND THAT THE DRAWING SHOWN HEREON ACCURATELY DEPICTS THE PROPOSED LOCATION OF THE WELL. THIS CERTIFICATE DOES NOT REPRESENT A LAND SURVEY PLAT OR IMPROVEMENT SURVEY PLAT AS DEFINED BY C.R.S. 38-51-102 AND CANNOT BE RELIED UPON TO DETERMINE OWNERSHIP.

MARK A. HALL, PLS 36073
COLORADO LICENSED PROFESSIONAL LAND SURVEYOR
FOR AND ON BEHALF OF P.F.S., LLC



 PREPARED BY: PFS 1601 W. 13th Ave. Denver, CO 80204	FIELD DATE: 05-17-12	SURFACE LOCATION:
	DRAWING DATE: 06-04-12	NE 1/4 NW 1/4, SEC. 19, T1N, R67W, 6TH P.M.
BY: KAG	WELD COUNTY, COLORADO	

NOTICE: ACCORDING TO COLORADO LAW YOU MUST COMMENCE ANY LEGAL ACTION BASED UPON ANY DEFECT IN THIS SURVEY WITHIN THREE YEARS AFTER YOU FIRST DISCOVER SUCH DEFECT. IN NO EVENT MAY ANY ACTION BASED UPON ANY DEFECT IN THIS SURVEY BE COMMENCED MORE THAN TEN YEARS FROM THIS SAID DATE OF THIS CERTIFICATION SHOWN HEREON.