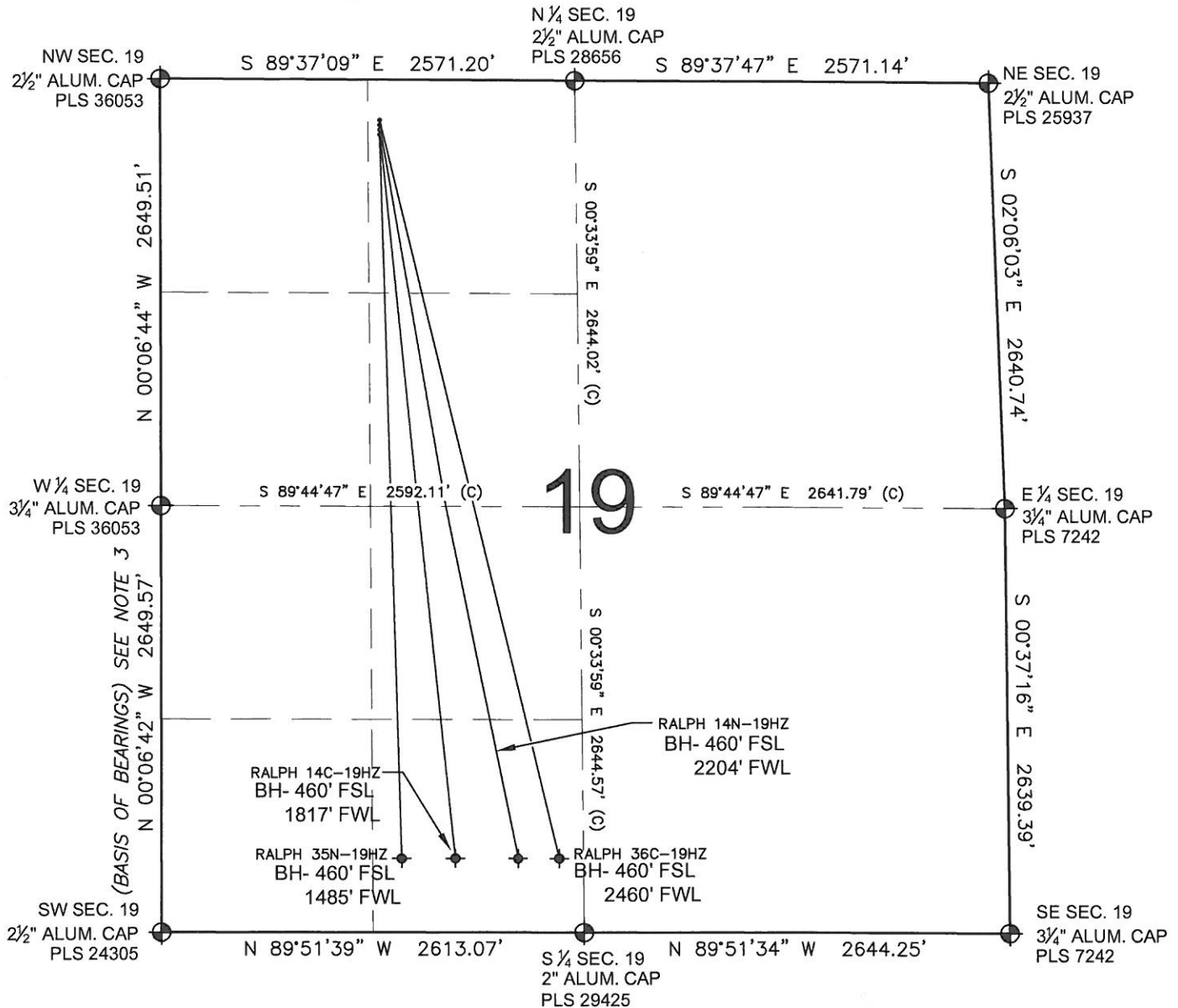


MULTI-WELL PLAN

RALPH 13N-19HZ

SECTION 19, TOWNSHIP 1 NORTH, RANGE 67 WEST, 6TH P.M.



NOTES:

- THIS FIELD SURVEY CONFORMS TO THE MINIMUM STANDARDS SET BY THE C.O.G.C.C., RULE NO. 215
- HORIZONTAL POSITIONS AND ORTHOMETRIC ELEVATIONS SHOWN AT THE WELL HEAD, ARE BASED ON GPS-RTK POSITIONS DERIVED FROM MINIMUM 2-HOUR STATIC OBSERVATIONS CORRECTED BY THE NATIONAL GEODETIC SURVEY ONLINE POSITIONING USER SERVICE, O.P.U.S. DATUM: HORIZONTAL = NAD83/2007, VERTICAL = NAVD88
- THE BASIS OF BEARINGS ARE STATE PLANE COORDINATE SYSTEM GRID BEARINGS SHOWN HEREON BETWEEN THE DESCRIBED MONUMENTS SHOWN HEREON.
- GRID DISTANCES ARE SHOWN, AS MEASURED IN THE FIELD, WITH TIES TO WELLS MEASURED PERPENDICULAR TO SECTION LINES.

LEGEND

- = EXISTING MONUMENT
 = BOTTOM HOLE
 BH = BOTTOM HOLE
 = PROPOSED WELL
 = EXISTING WELL

NOTES:

- RALPH 35N-19HZ TO BE AT 340' FNL, 1361' FWL.
 BOTTOM HOLE AT 460' FSL & 1485' FWL.
 RALPH 14C-19HZ TO BE AT 310' FNL, 1361' FWL.
 BOTTOM HOLE AT 460' FSL & 1817' FWL.
 RALPH 14N-19HZ TO BE AT 280' FNL, 1361' FWL.
 BOTTOM HOLE AT 460' FSL & 2204' FWL.
 RALPH 36C-19HZ TO BE AT 250' FNL, 1360' FWL.
 BOTTOM HOLE AT 460' FSL & 2460' FWL.

PREPARED BY:

PFS

Petroleum Field Services, LLC
1801 W. 13th Ave.
Denver, CO 80204



KERR-MCGEE OIL & GAS ONSHORE LP

FIELD DATE:

05-17-12

PAD NAME:

RALPH 4 PAD NENW

DRAWING DATE:

10-31-12

SURFACE LOCATION:

NW 1/4 NW 1/4, SEC. 19, T1N, R67W, 6TH P.M.
WELD COUNTY, COLORADO

BY:

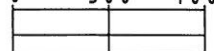
SMF

CHECKED:

TJN



0 500 1000

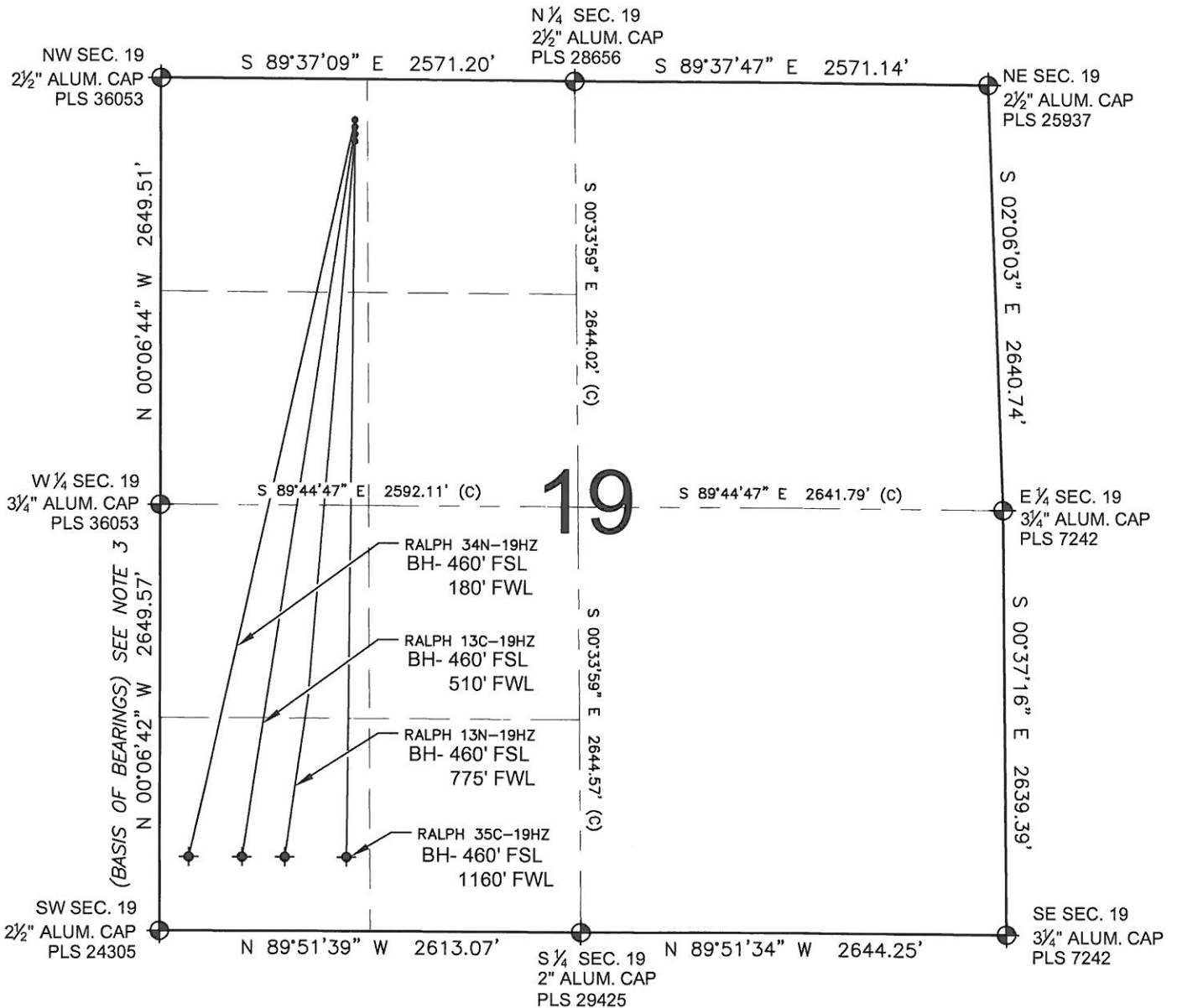


SCALE: 1"=1000'

MULTI-WELL PLAN

RALPH 13N-19HZ

SECTION 19, TOWNSHIP 1 NORTH, RANGE 67 WEST, 6TH P.M.



NOTES:

1. THIS FIELD SURVEY CONFORMS TO THE MINIMUM STANDARDS SET BY THE C.O.G.C.C., RULE NO. 215
2. HORIZONTAL POSITIONS AND ORTHOMETRIC ELEVATIONS SHOWN AT THE WELL HEAD, ARE BASED ON GPS-RTK POSITIONS DERIVED FROM MINIMUM 2-HOUR STATIC OBSERVATIONS CORRECTED BY THE NATIONAL GEODETIC SURVEY ONLINE POSITIONING USER SERVICE, O.P.U.S. DATUM: HORIZONTAL = NAD83/2007, VERTICAL = NAVD88
3. THE BASIS OF BEARINGS ARE STATE PLANE COORDINATE SYSTEM GRID BEARINGS SHOWN HEREON BETWEEN THE DESCRIBED MONUMENTS SHOWN HEREON.
4. GRID DISTANCES ARE SHOWN, AS MEASURED IN THE FIELD, WITH TIES TO WELLS MEASURED PERPENDICULAR TO SECTION LINES.

LEGEND

- ⊕ = EXISTING MONUMENT
- ⬢ = PROPOSED WELL
- ⬢ = BOTTOM HOLE
- ⬢ = EXISTING WELL
- BH = BOTTOM HOLE

NOTES:

- RALPH 34N-19HZ TO BE AT 250' FNL, 1211' FWL. BOTTOM HOLE AT 460' FSL & 180' FWL.
- RALPH 13C-19HZ TO BE AT 280' FNL, 1211' FWL. BOTTOM HOLE AT 460' FSL & 510' FWL.
- RALPH 13N-19HZ TO BE AT 310' FNL, 1210' FWL. BOTTOM HOLE AT 460' FSL & 775' FWL.
- RALPH 35C-19HZ TO BE AT 340' FNL, 1211' FWL. BOTTOM HOLE AT 460' FSL & 1160' FWL.

PREPARED BY:



KERR-MCGEE OIL & GAS ONSHORE LP

FIELD DATE: 05-17-12	PAD NAME: RALPH 4 PAD NWNW
DRAWING DATE: 10-31-12	SURFACE LOCATION: NW 1/4 NW 1/4, SEC. 19, T1N, R67W, 6TH P.M. WELD COUNTY, COLORADO
BY: SMF	CHECKED: TJN

