

KERR-MCGEE OIL & GAS ONSHORE LP

Location: COLORADO Slot: SLOT#14 USA FED 30C-36HZ (767'FSL & 561'FWL, SEC.36)
Field: WELD COUNTY (KERR MCGEE) Well: USA FED 30C-36HZ
Facility: SEC.36-T3N-R66W Wellbore: USA FED 30C-36HZ PWB

Plot reference wellpath is USA FED 30C-36HZ (PERMIT) PWP

True vertical depths are referenced to XTREME 6 (RKB)	Grid System: NAD83 / Lambert Colorado SP, Northern Zone (501), US feet
Measured depths are referenced to XTREME 6 (RKB)	North Reference: True north
XTREME 6 (RKB) to Mean Sea Level: 5041 feet	Scale: True distance
Mean Sea Level to Mud line (At Slot: SLOT#14 USA FED 30C-36HZ (767'FSL & 561'FWL, SEC.36)): 0 feet	Depths are in feet
Coordinates are in feet referenced to Slot	Created by: wisje02 on 4/22/2012

Location Information

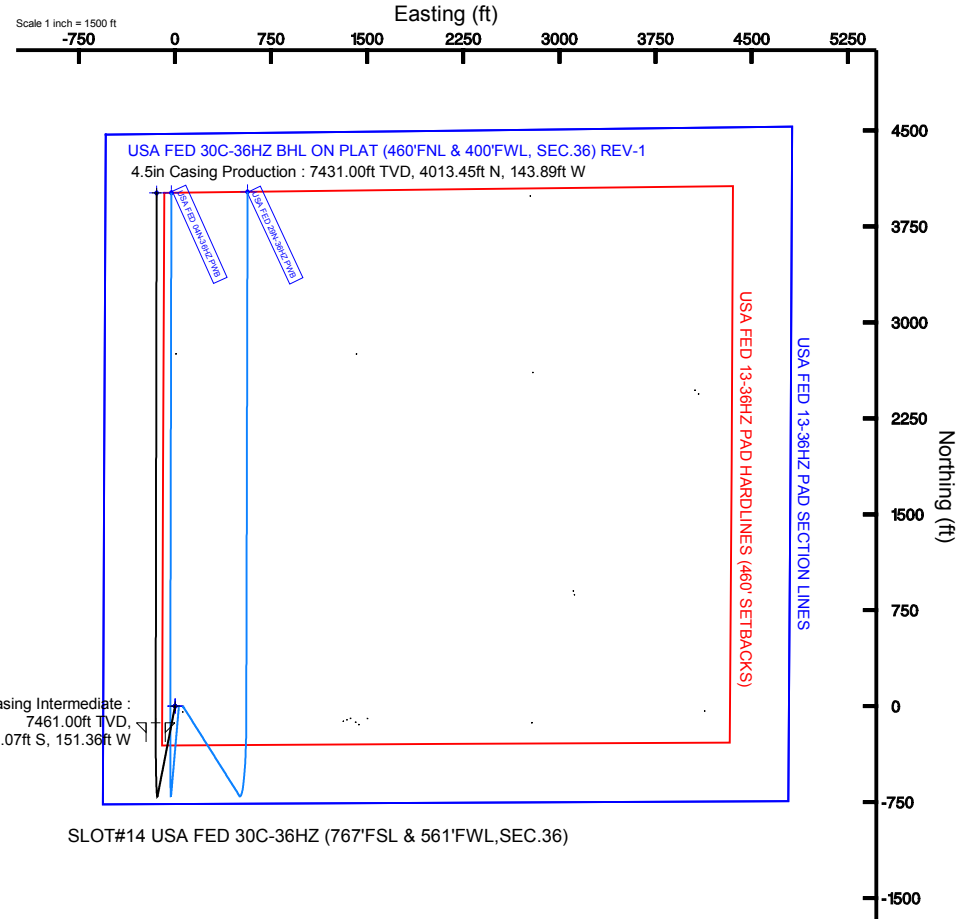
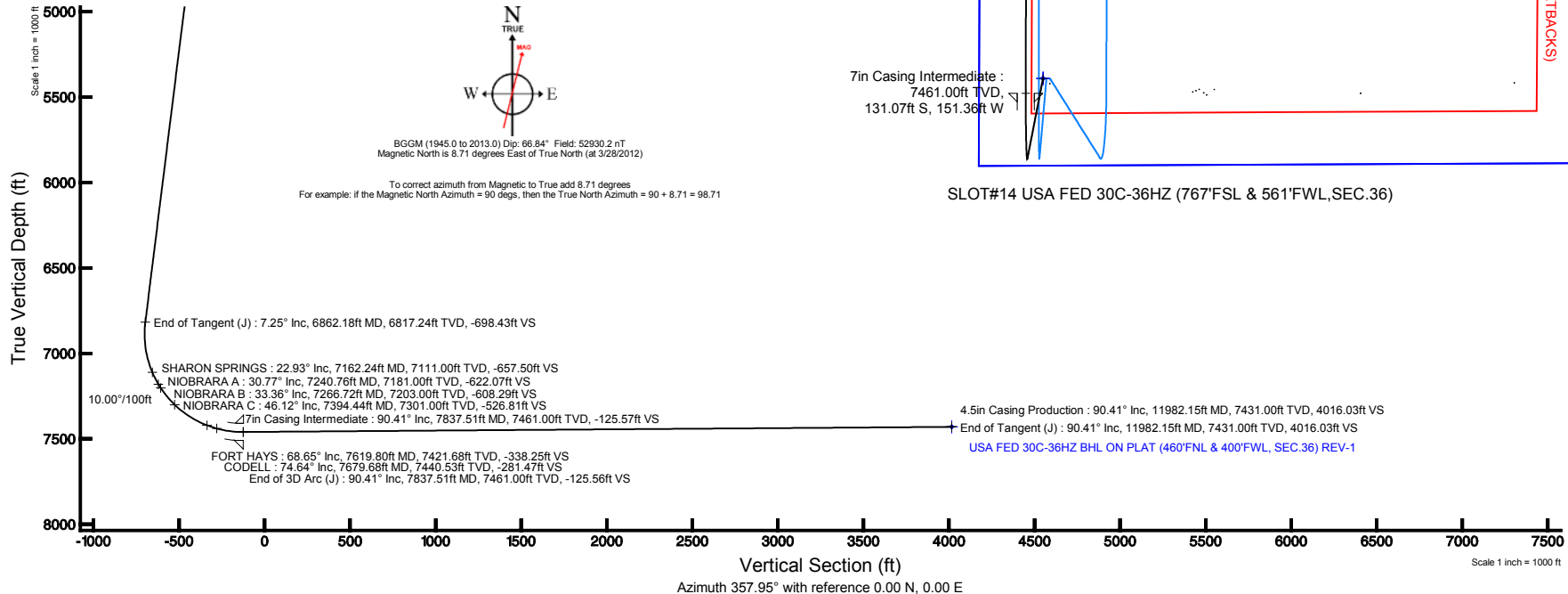
Facility Name				Grid East (US ft)	Grid North (US ft)	Latitude	Longitude
SEC.36-T3N-R66W				3214305.575	1310913.744	40°11'03.516"N	104°43'58.656"W
Slot	Local N (ft)	Local E (ft)	Grid East (US ft)	Grid North (US ft)	Latitude	Longitude	
SLOT#14 USA FED 30C-36HZ (767'FSL & 561'FWL, SEC.36)	-2754.80	-6.99	3214322.417	1308159.106	40°10'36.293"N	104°43'58.746"W	
XTREME 6 (RKB) to Mud line (At Slot: SLOT#14 USA FED 30C-36HZ (767'FSL & 561'FWL, SEC.36))							5041ft
Mean Sea Level to Mud line (At Slot: SLOT#14 USA FED 30C-36HZ (767'FSL & 561'FWL, SEC.36))							0ft
XTREME 6 (RKB) to Mean Sea Level							5041ft

Well Profile Data

Design Comment	MD (ft)	Inc (°)	Az (°)	TVD (ft)	Local N (ft)	Local E (ft)	DLS (°/100ft)	VS (ft)
Tie On	17.00	0.000	191.000	17.00	0.00	0.00	0.00	0.00
End of Tangent	1000.00	0.000	191.000	1000.00	0.00	0.00	0.00	0.00
End of Build (J)	1362.50	7.250	191.000	1361.53	-22.48	-4.37	2.00	-22.31
End of Tangent (J)	6862.18	7.250	191.000	6817.24	-703.79	-136.80	0.00	-698.43
End of 3D Arc (J)	7837.51	90.415	0.103	7461.00	-131.07	-151.36	10.00	-125.56
End of Tangent (J)	11982.15	90.415	0.103	7431.00	4013.45	-143.89	0.00	4016.03

Targets

Name	MD (ft)	TVD (ft)	Local N (ft)	Local E (ft)	Grid East (US ft)	Grid North (US ft)	Latitude	Longitude
USA FED 13-36HZ PAD SECTION LINES		0.00	0.00	0.00	3214322.42	1308159.11	40°10'36.293"N	104°43'58.746"W
USA FED 30C-36HZ BHL ON PLAT (460'FNL & 400'FWL, SEC.36) REV-1	11982.15	7431.00	4013.45	-143.89	3214143.83	1312170.99	40°11'15.954"N	104°44'00.600"W
USA FED 13-36HZ PAD HARDLINES (400' SETBACKS)		7440.00	0.00	0.00	3214322.42	1308159.11	40°10'36.293"N	104°43'58.746"W





Planned Wellpath Report

USA FED 30C-36HZ (PERMIT) PWP

Page 1 of 5



REFERENCE WELLPATH IDENTIFICATION			
Operator	KERR-MCGEE OIL & GAS ONSHORE LP	Slot	SLOT#14 USA FED 30C-36HZ (767'FSL & 561'FWL,SEC.36)
Area	COLORADO	Well	USA FED 30C-36HZ
Field	WELD COUNTY (KERR MCGEE)	Wellbore	USA FED 30C-36HZ PWB
Facility	SEC.36-T3N-R66W		

REPORT SETUP INFORMATION			
Projection System	NAD83 / Lambert Colorado SP, Northern Zone (501), US feet	Software System	WellArchitect® 3.0.2
North Reference	True	User	Wilsjef02
Scale	0.999958	Report Generated	4/2/2012 at 11:25:13
Convergence at slot	0.50° East	Database/Source file	WellArchitectDB/USA_FED_30C-36HZ_PWB.xml

WELLPATH LOCATION						
	Local coordinates		Grid coordinates		Geographic coordinates	
	North[ft]	East[ft]	Easting[US ft]	Northing[US ft]	Latitude	Longitude
Slot Location	-2754.80	-6.99	3214322.42	1308159.11	40°10'36.293"N	104°43'58.746"W
Facility Reference Pt			3214305.58	1310913.74	40°11'03.516"N	104°43'58.656"W
Field Reference Pt			3197771.84	1268891.29	40°04'09.600"N	104°47'36.000"W

WELLPATH DATUM			
Calculation method	Minimum curvature	XTREME 6 (RKB) to Facility Vertical Datum	5041.00ft
Horizontal Reference Pt	Slot	XTREME 6 (RKB) to Mean Sea Level	5041.00ft
Vertical Reference Pt	XTREME 6 (RKB)	XTREME 6 (RKB) to Mud Line at Slot (SLOT#14 USA FED 30C-36HZ (767'FSL & 561'FWL,SEC.36))	5041.00ft
MD Reference Pt	XTREME 6 (RKB)	Section Origin	N 0.00, E 0.00 ft
Field Vertical Reference	Mean Sea Level	Section Azimuth	357.95°



Planned Wellpath Report

USA FED 30C-36HZ (PERMIT) PWP

Page 2 of 5



REFERENCE WELLPATH IDENTIFICATION

Operator	KERR-MCGEE OIL & GAS ONSHORE LP	Slot	SLOT#14 USA FED 30C-36HZ (767'FSL & 561'FWL,SEC.36)
Area	COLORADO	Well	USA FED 30C-36HZ
Field	WELD COUNTY (KERR MCGEE)	Wellbore	USA FED 30C-36HZ PWB
Facility	SEC.36-T3N-R66W		

WELLPATH DATA (134 stations) † = interpolated/extrapolated station

MD [ft]	Inclination [°]	Azimuth [°]	TVD [ft]	Vert Sect [ft]	North [ft]	East [ft]	Latitude	Longitude	DLS [°/100ft]	Comments
0.00†	0.000	191.000	0.00	0.00	0.00	0.00	40°10'36.293"N	104°43'58.746"W	0.00	
17.00	0.000	191.000	17.00	0.00	0.00	0.00	40°10'36.293"N	104°43'58.746"W	0.00	Tie On
117.00†	0.000	191.000	117.00	0.00	0.00	0.00	40°10'36.293"N	104°43'58.746"W	0.00	
217.00†	0.000	191.000	217.00	0.00	0.00	0.00	40°10'36.293"N	104°43'58.746"W	0.00	
317.00†	0.000	191.000	317.00	0.00	0.00	0.00	40°10'36.293"N	104°43'58.746"W	0.00	
417.00†	0.000	191.000	417.00	0.00	0.00	0.00	40°10'36.293"N	104°43'58.746"W	0.00	
517.00†	0.000	191.000	517.00	0.00	0.00	0.00	40°10'36.293"N	104°43'58.746"W	0.00	
617.00†	0.000	191.000	617.00	0.00	0.00	0.00	40°10'36.293"N	104°43'58.746"W	0.00	
717.00†	0.000	191.000	717.00	0.00	0.00	0.00	40°10'36.293"N	104°43'58.746"W	0.00	
817.00†	0.000	191.000	817.00	0.00	0.00	0.00	40°10'36.293"N	104°43'58.746"W	0.00	
917.00†	0.000	191.000	917.00	0.00	0.00	0.00	40°10'36.293"N	104°43'58.746"W	0.00	
1000.00	0.000	191.000	1000.00	0.00	0.00	0.00	40°10'36.293"N	104°43'58.746"W	0.00	End of Tangent
1017.00†	0.340	191.000	1017.00	-0.05	-0.05	-0.01	40°10'36.293"N	104°43'58.746"W	2.00	
1117.00†	2.340	191.000	1116.97	-2.33	-2.34	-0.46	40°10'36.270"N	104°43'58.752"W	2.00	
1217.00†	4.340	191.000	1216.79	-8.00	-8.06	-1.57	40°10'36.213"N	104°43'58.766"W	2.00	
1317.00†	6.340	191.000	1316.35	-17.07	-17.20	-3.34	40°10'36.123"N	104°43'58.789"W	2.00	
1362.50	7.250	191.000	1361.53	-22.31	-22.48	-4.37	40°10'36.071"N	104°43'58.802"W	2.00	End of Build (J)
1417.00†	7.250	191.000	1415.60	-29.01	-29.23	-5.68	40°10'36.004"N	104°43'58.819"W	0.00	
1517.00†	7.250	191.000	1514.80	-41.31	-41.62	-8.09	40°10'35.882"N	104°43'58.850"W	0.00	
1617.00†	7.250	191.000	1614.00	-53.60	-54.01	-10.50	40°10'35.759"N	104°43'58.881"W	0.00	
1717.00†	7.250	191.000	1713.20	-65.89	-66.40	-12.91	40°10'35.637"N	104°43'58.912"W	0.00	
1817.00†	7.250	191.000	1812.40	-78.19	-78.79	-15.31	40°10'35.514"N	104°43'58.943"W	0.00	
1917.00†	7.250	191.000	1911.60	-90.48	-91.17	-17.72	40°10'35.392"N	104°43'58.974"W	0.00	
2017.00†	7.250	191.000	2010.80	-102.78	-103.56	-20.13	40°10'35.270"N	104°43'59.005"W	0.00	
2117.00†	7.250	191.000	2110.00	-115.07	-115.95	-22.54	40°10'35.147"N	104°43'59.036"W	0.00	
2217.00†	7.250	191.000	2209.20	-127.36	-128.34	-24.95	40°10'35.025"N	104°43'59.067"W	0.00	
2317.00†	7.250	191.000	2308.40	-139.66	-140.73	-27.35	40°10'34.902"N	104°43'59.098"W	0.00	
2417.00†	7.250	191.000	2407.60	-151.95	-153.12	-29.76	40°10'34.780"N	104°43'59.129"W	0.00	
2517.00†	7.250	191.000	2506.80	-164.24	-165.50	-32.17	40°10'34.657"N	104°43'59.160"W	0.00	
2617.00†	7.250	191.000	2606.00	-176.54	-177.89	-34.58	40°10'34.535"N	104°43'59.191"W	0.00	
2717.00†	7.250	191.000	2705.20	-188.83	-190.28	-36.99	40°10'34.413"N	104°43'59.222"W	0.00	
2817.00†	7.250	191.000	2804.40	-201.13	-202.67	-39.39	40°10'34.290"N	104°43'59.254"W	0.00	
2917.00†	7.250	191.000	2903.61	-213.42	-215.06	-41.80	40°10'34.168"N	104°43'59.285"W	0.00	
3017.00†	7.250	191.000	3002.81	-225.71	-227.44	-44.21	40°10'34.045"N	104°43'59.316"W	0.00	
3117.00†	7.250	191.000	3102.01	-238.01	-239.83	-46.62	40°10'33.923"N	104°43'59.347"W	0.00	
3217.00†	7.250	191.000	3201.21	-250.30	-252.22	-49.03	40°10'33.801"N	104°43'59.378"W	0.00	
3317.00†	7.250	191.000	3300.41	-262.59	-264.61	-51.43	40°10'33.678"N	104°43'59.409"W	0.00	
3417.00†	7.250	191.000	3399.61	-274.89	-277.00	-53.84	40°10'33.556"N	104°43'59.440"W	0.00	
3517.00†	7.250	191.000	3498.81	-287.18	-289.38	-56.25	40°10'33.433"N	104°43'59.471"W	0.00	
3617.00†	7.250	191.000	3598.01	-299.48	-301.77	-58.66	40°10'33.311"N	104°43'59.502"W	0.00	
3717.00†	7.250	191.000	3697.21	-311.77	-314.16	-61.07	40°10'33.188"N	104°43'59.533"W	0.00	
3817.00†	7.250	191.000	3796.41	-324.06	-326.55	-63.47	40°10'33.066"N	104°43'59.564"W	0.00	
3917.00†	7.250	191.000	3895.61	-336.36	-338.94	-65.88	40°10'32.944"N	104°43'59.595"W	0.00	
4017.00†	7.250	191.000	3994.81	-348.65	-351.32	-68.29	40°10'32.821"N	104°43'59.626"W	0.00	
4089.77†	7.250	191.000	4067.00	-357.60	-360.34	-70.04	40°10'32.732"N	104°43'59.648"W	0.00	PARKMAN
4117.00†	7.250	191.000	4094.01	-360.95	-363.71	-70.70	40°10'32.699"N	104°43'59.657"W	0.00	
4217.00†	7.250	191.000	4193.21	-373.24	-376.10	-73.11	40°10'32.576"N	104°43'59.688"W	0.00	
4317.00†	7.250	191.000	4292.41	-385.53	-388.49	-75.51	40°10'32.454"N	104°43'59.719"W	0.00	
4417.00†	7.250	191.000	4391.61	-397.83	-400.88	-77.92	40°10'32.332"N	104°43'59.750"W	0.00	
4517.00†	7.250	191.000	4490.81	-410.12	-413.26	-80.33	40°10'32.209"N	104°43'59.781"W	0.00	
4617.00†	7.250	191.000	4590.01	-422.41	-425.65	-82.74	40°10'32.087"N	104°43'59.812"W	0.00	
4626.06†	7.250	191.000	4599.00	-423.53	-426.77	-82.96	40°10'32.076"N	104°43'59.815"W	0.00	SUSSEX
4717.00†	7.250	191.000	4689.21	-434.71	-438.04	-85.15	40°10'31.964"N	104°43'59.843"W	0.00	
4817.00†	7.250	191.000	4788.41	-447.00	-450.43	-87.55	40°10'31.842"N	104°43'59.874"W	0.00	
4917.00†	7.250	191.000	4887.62	-459.30	-462.82	-89.96	40°10'31.719"N	104°43'59.905"W	0.00	
5017.00†	7.250	191.000	4986.82	-471.59	-475.20	-92.37	40°10'31.597"N	104°43'59.936"W	0.00	
5117.00†	7.250	191.000	5086.02	-483.88	-487.59	-94.78	40°10'31.475"N	104°43'59.967"W	0.00	
5217.00†	7.250	191.000	5185.22	-496.18	-499.98	-97.19	40°10'31.352"N	104°44'00.000"W	0.00	
5317.00†	7.250	191.000	5284.42	-508.47	-512.37	-99.59	40°10'31.230"N	104°44'00.029"W	0.00	
5417.00†	7.250	191.000	5383.62	-520.76	-524.76	-102.00	40°10'31.107"N	104°44'00.060"W	0.00	



Planned Wellpath Report

USA FED 30C-36HZ (PERMIT) PWP

Page 3 of 5



REFERENCE WELLPATH IDENTIFICATION

Operator	KERR-MCGEE OIL & GAS ONSHORE LP	Slot	SLOT#14 USA FED 30C-36HZ (767'FSL & 561'FWL,SEC.36)
Area	COLORADO	Well	USA FED 30C-36HZ
Field	WELD COUNTY (KERR MCGEE)	Wellbore	USA FED 30C-36HZ PWB
Facility	SEC.36-T3N-R66W		

WELLPATH DATA (134 stations) † = interpolated/extrapolated station

MD [ft]	Inclination [°]	Azimuth [°]	TVD [ft]	Vert Sect [ft]	North [ft]	East [ft]	Latitude	Longitude	DLS [°/100ft]	Comments
5517.00†	7.250	191.000	5482.82	-533.06	-537.14	-104.41	40°10'30.985"N	104°44'00.091"W	0.00	
5617.00†	7.250	191.000	5582.02	-545.35	-549.53	-106.82	40°10'30.863"N	104°44'00.122"W	0.00	
5717.00†	7.250	191.000	5681.22	-557.65	-561.92	-109.23	40°10'30.740"N	104°44'00.153"W	0.00	
5817.00†	7.250	191.000	5780.42	-569.94	-574.31	-111.63	40°10'30.618"N	104°44'00.184"W	0.00	
5917.00†	7.250	191.000	5879.62	-582.23	-586.70	-114.04	40°10'30.495"N	104°44'00.215"W	0.00	
6017.00†	7.250	191.000	5978.82	-594.53	-599.08	-116.45	40°10'30.373"N	104°44'00.246"W	0.00	
6117.00†	7.250	191.000	6078.02	-606.82	-611.47	-118.86	40°10'30.250"N	104°44'00.277"W	0.00	
6217.00†	7.250	191.000	6177.22	-619.12	-623.86	-121.27	40°10'30.128"N	104°44'00.308"W	0.00	
6317.00†	7.250	191.000	6276.42	-631.41	-636.25	-123.67	40°10'30.006"N	104°44'00.339"W	0.00	
6417.00†	7.250	191.000	6375.62	-643.70	-648.64	-126.08	40°10'29.883"N	104°44'00.370"W	0.00	
6517.00†	7.250	191.000	6474.82	-656.00	-661.02	-128.49	40°10'29.761"N	104°44'00.401"W	0.00	
6617.00†	7.250	191.000	6574.02	-668.29	-673.41	-130.90	40°10'29.638"N	104°44'00.432"W	0.00	
6717.00†	7.250	191.000	6673.22	-680.58	-685.80	-133.31	40°10'29.516"N	104°44'00.463"W	0.00	
6817.00†	7.250	191.000	6772.42	-692.88	-698.19	-135.71	40°10'29.393"N	104°44'00.494"W	0.00	
6862.18	7.250	191.000	6817.24	-698.43	-703.79	-136.80	40°10'29.338"N	104°44'00.508"W	0.00	End of Tangent (J)
6917.00†	2.140	220.202	6871.87	-702.56	-707.97	-138.12	40°10'29.297"N	104°44'00.525"W	10.00	
7017.00†	8.476	350.798	6971.54	-696.62	-702.10	-140.51	40°10'29.355"N	104°44'00.556"W	10.00	
7117.00†	18.414	355.947	7068.68	-673.46	-679.01	-142.81	40°10'29.583"N	104°44'00.586"W	10.00	
7162.24†	22.927	356.831	7111.00	-657.50	-663.08	-143.81	40°10'29.740"N	104°44'00.599"W	10.00	SHARON SPRINGS
7217.00†	28.394	357.541	7160.34	-633.80	-639.40	-144.96	40°10'29.974"N	104°44'00.613"W	10.00	
7240.76†	30.768	357.776	7181.00	-622.07	-627.69	-145.43	40°10'30.090"N	104°44'00.620"W	10.00	NIOBRARA A
7266.72†	33.361	357.998	7203.00	-608.29	-613.91	-145.94	40°10'30.226"N	104°44'00.626"W	10.00	NIOBRARA B
7317.00†	38.385	358.352	7243.73	-578.84	-584.48	-146.87	40°10'30.517"N	104°44'00.638"W	10.00	
7394.44†	46.123	358.767	7301.00	-526.81	-532.46	-148.17	40°10'31.031"N	104°44'00.655"W	10.00	NIOBRARA C
7417.00†	48.378	358.868	7316.31	-510.25	-515.90	-148.51	40°10'31.195"N	104°44'00.659"W	10.00	
7517.00†	58.374	359.244	7375.89	-430.11	-435.75	-149.81	40°10'31.987"N	104°44'00.676"W	10.00	
7617.00†	68.370	359.546	7420.66	-340.86	-346.48	-150.74	40°10'32.869"N	104°44'00.688"W	10.00	
7619.80†	68.650	359.554	7421.68	-338.25	-343.87	-150.76	40°10'32.895"N	104°44'00.688"W	10.00	FORT HAYS
7679.68†	74.636	359.714	7440.53	-281.47	-287.07	-151.13	40°10'33.456"N	104°44'00.693"W	10.00	CODELL
7717.00†	78.367	359.809	7449.24	-245.20	-250.79	-151.28	40°10'33.815"N	104°44'00.695"W	10.00	
7817.00†	88.364	0.054	7460.78	-146.06	-151.58	-151.39	40°10'34.795"N	104°44'00.696"W	10.00	
7837.51	90.415	0.103	7461.00	-125.56	-131.07	-151.36	40°10'34.998"N	104°44'00.696"W	10.00	End of 3D Arc (J)
7917.00†	90.415	0.103	7460.42	-46.13	-51.59	-151.22	40°10'35.783"N	104°44'00.694"W	0.00	
8017.00†	90.415	0.103	7459.70	53.79	48.41	-151.04	40°10'36.771"N	104°44'00.692"W	0.00	
8117.00†	90.415	0.103	7458.98	153.72	148.41	-150.86	40°10'37.760"N	104°44'00.690"W	0.00	
8217.00†	90.415	0.103	7458.25	253.65	248.41	-150.68	40°10'38.748"N	104°44'00.687"W	0.00	
8317.00†	90.415	0.103	7457.53	353.57	348.40	-150.50	40°10'39.736"N	104°44'00.685"W	0.00	
8417.00†	90.415	0.103	7456.81	453.50	448.40	-150.32	40°10'40.724"N	104°44'00.683"W	0.00	
8517.00†	90.415	0.103	7456.08	553.43	548.40	-150.14	40°10'41.712"N	104°44'00.680"W	0.00	
8617.00†	90.415	0.103	7455.36	653.35	648.40	-149.96	40°10'42.700"N	104°44'00.678"W	0.00	
8717.00†	90.415	0.103	7454.63	753.28	748.39	-149.78	40°10'43.689"N	104°44'00.676"W	0.00	
8817.00†	90.415	0.103	7453.91	853.20	848.39	-149.60	40°10'44.677"N	104°44'00.673"W	0.00	
8917.00†	90.415	0.103	7453.19	953.13	948.39	-149.42	40°10'45.665"N	104°44'00.671"W	0.00	
9017.00†	90.415	0.103	7452.46	1053.06	1048.38	-149.24	40°10'46.653"N	104°44'00.669"W	0.00	
9117.00†	90.415	0.103	7451.74	1152.98	1148.38	-149.06	40°10'47.641"N	104°44'00.666"W	0.00	
9217.00†	90.415	0.103	7451.01	1252.91	1248.38	-148.88	40°10'48.629"N	104°44'00.664"W	0.00	
9317.00†	90.415	0.103	7450.29	1352.84	1348.38	-148.70	40°10'49.618"N	104°44'00.662"W	0.00	
9417.00†	90.415	0.103	7449.57	1452.76	1448.37	-148.52	40°10'50.606"N	104°44'00.659"W	0.00	
9517.00†	90.415	0.103	7448.84	1552.69	1548.37	-148.33	40°10'51.594"N	104°44'00.657"W	0.00	
9617.00†	90.415	0.103	7448.12	1652.62	1648.37	-148.15	40°10'52.582"N	104°44'00.655"W	0.00	
9717.00†	90.415	0.103	7447.40	1752.54	1748.36	-147.97	40°10'53.570"N	104°44'00.652"W	0.00	
9817.00†	90.415	0.103	7446.67	1852.47	1848.36	-147.79	40°10'54.559"N	104°44'00.650"W	0.00	
9917.00†	90.415	0.103	7445.95	1952.40	1948.36	-147.61	40°10'55.547"N	104°44'00.648"W	0.00	
10017.00†	90.415	0.103	7445.22	2052.32	2048.36	-147.43	40°10'56.535"N	104°44'00.646"W	0.00	
10117.00†	90.415	0.103	7444.50	2152.25	2148.35	-147.25	40°10'57.523"N	104°44'00.643"W	0.00	
10217.00†	90.415	0.103	7443.78	2252.18	2248.35	-147.07	40°10'58.511"N	104°44'00.641"W	0.00	
10317.00†	90.415	0.103	7443.05	2352.10	2348.35	-146.89	40°10'59.499"N	104°44'00.639"W	0.00	
10417.00†	90.415	0.103	7442.33	2452.03	2448.35	-146.71	40°11'00.488"N	104°44'00.636"W	0.00	
10517.00†	90.415	0.103	7441.61	2551.96	2548.34	-146.53	40°11'01.476"N	104°44'00.634"W	0.00	
10617.00†	90.415	0.103	7440.88	2651.88	2648.34	-146.35	40°11'02.464"N	104°44'00.632"W	0.00	



Planned Wellpath Report

USA FED 30C-36HZ (PERMIT) PWP

Page 4 of 5



REFERENCE WELLPATH IDENTIFICATION

Operator	KERR-MCGEE OIL & GAS ONSHORE LP	Slot	SLOT#14 USA FED 30C-36HZ (767'FSL & 561'FWL,SEC.36)
Area	COLORADO	Well	USA FED 30C-36HZ
Field	WELD COUNTY (KERR MCGEE)	Wellbore	USA FED 30C-36HZ PWB
Facility	SEC.36-T3N-R66W		

WELLPATH DATA (134 stations) † = interpolated/extrapolated station

MD [ft]	Inclination [°]	Azimuth [°]	TVD [ft]	Vert Sect [ft]	North [ft]	East [ft]	Latitude	Longitude	DLS [°/100ft]	Comments
10717.00†	90.415	0.103	7440.16	2751.81	2748.34	-146.17	40°11'03.452"N	104°44'00.629"W	0.00	
10817.00†	90.415	0.103	7439.43	2851.74	2848.33	-145.99	40°11'04.440"N	104°44'00.627"W	0.00	
10917.00†	90.415	0.103	7438.71	2951.66	2948.33	-145.81	40°11'05.428"N	104°44'00.625"W	0.00	
11017.00†	90.415	0.103	7437.99	3051.59	3048.33	-145.63	40°11'06.417"N	104°44'00.622"W	0.00	
11117.00†	90.415	0.103	7437.26	3151.52	3148.33	-145.45	40°11'07.405"N	104°44'00.620"W	0.00	
11217.00†	90.415	0.103	7436.54	3251.44	3248.32	-145.27	40°11'08.393"N	104°44'00.618"W	0.00	
11317.00†	90.415	0.103	7435.81	3351.37	3348.32	-145.09	40°11'09.381"N	104°44'00.615"W	0.00	
11417.00†	90.415	0.103	7435.09	3451.30	3448.32	-144.91	40°11'10.369"N	104°44'00.613"W	0.00	
11517.00†	90.415	0.103	7434.37	3551.22	3548.31	-144.73	40°11'11.357"N	104°44'00.611"W	0.00	
11617.00†	90.415	0.103	7433.64	3651.15	3648.31	-144.55	40°11'12.346"N	104°44'00.608"W	0.00	
11717.00†	90.415	0.103	7432.92	3751.07	3748.31	-144.37	40°11'13.334"N	104°44'00.606"W	0.00	
11817.00†	90.415	0.103	7432.20	3851.00	3848.31	-144.19	40°11'14.322"N	104°44'00.604"W	0.00	
11917.00†	90.415	0.103	7431.47	3950.93	3948.30	-144.01	40°11'15.310"N	104°44'00.602"W	0.00	
11982.15	90.415	0.103	7431.00 [†]	4016.03	4013.45	-143.89	40°11'15.954"N	104°44'00.600"W	0.00	End of Tangent (J)

HOLE & CASING SECTIONS - Ref Wellbore: USA FED 30C-36HZ PWB Ref Wellpath: USA FED 30C-36HZ (PERMIT) PWP

String/Diameter	Start MD [ft]	End MD [ft]	Interval [ft]	Start TVD [ft]	End TVD [ft]	Start N/S [ft]	Start E/W [ft]	End N/S [ft]	End E/W [ft]
13.5in Open Hole	17.00	800.00	783.00	17.00	800.00	0.00	0.00	0.00	0.00
9.625in Casing Surface	17.00	800.00	783.00	17.00	800.00	0.00	0.00	0.00	0.00
8.75in Open Hole	800.00	7837.51	7037.51	800.00	7461.00	0.00	0.00	-131.07	-151.36
7in Casing Intermediate	17.00	7837.51	7820.51	17.00	7461.00	0.00	0.00	-131.07	-151.36
6.125in Open Hole	7837.51	11982.15	4144.64	7461.00	7431.00	-131.07	-151.36	4013.45	-143.89
4.5in Casing Production	17.00	11982.15	11965.15	17.00	7431.00	0.00	0.00	4013.45	-143.89

TARGETS

Name	MD [ft]	TVD [ft]	North [ft]	East [ft]	Grid East [US ft]	Grid North [US ft]	Latitude	Longitude	Shape
USA FED 13-36HZ PAD SECTION LINES		0.00	0.00	0.00	3214322.42	1308159.11	40°10'36.293"N	104°43'58.746"W	polygon
1) USA FED 30C-36HZ BHL ON PLAT (460'FNL & 400'FWL, SEC.36) REV-1	11982.15	7431.00	4013.45	-143.89	3214143.83	1312170.99	40°11'15.954"N	104°44'00.600"W	point
USA FED 13-36HZ PAD HARDLINES (460' SETBACKS)		7440.00	0.00	0.00	3214322.42	1308159.11	40°10'36.293"N	104°43'58.746"W	polygon

SURVEY PROGRAM - Ref Wellbore: USA FED 30C-36HZ PWB Ref Wellpath: USA FED 30C-36HZ (PERMIT) PWP

Start MD [ft]	End MD [ft]	Positional Uncertainty Model	Log Name/Comment	Wellbore
17.00	11982.15	NaviTrak (Standard)		USA FED 30C-36HZ PWB



Planned Wellpath Report

USA FED 30C-36HZ (PERMIT) PWP

Page 5 of 5



REFERENCE WELLPATH IDENTIFICATION			
Operator	KERR-MCGEE OIL & GAS ONSHORE LP	Slot	SLOT#14 USA FED 30C-36HZ (767'FSL & 561'FWL,SEC.36)
Area	COLORADO	Well	USA FED 30C-36HZ
Field	WELD COUNTY (KERR MCGEE)	Wellbore	USA FED 30C-36HZ PWB
Facility	SEC.36-T3N-R66W		

WELLPATH COMMENTS					
MD [ft]	Inclination [°]		Azimuth [°]	TVD [ft]	Comment
4089.77	7.250		191.000	4067.00	PARKMAN
4626.06	7.250		191.000	4599.00	SUSSEX
7162.24	22.927		356.831	7111.00	SHARON SPRINGS
7240.76	30.768		357.776	7181.00	NIOBRARA A
7266.72	33.361		357.998	7203.00	NIOBRARA B
7394.44	46.123		358.767	7301.00	NIOBRARA C
7619.80	68.650		359.554	7421.68	FORT HAYS
7679.68	74.636		359.714	7440.53	CODELL