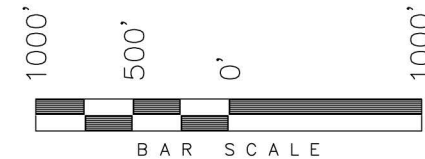
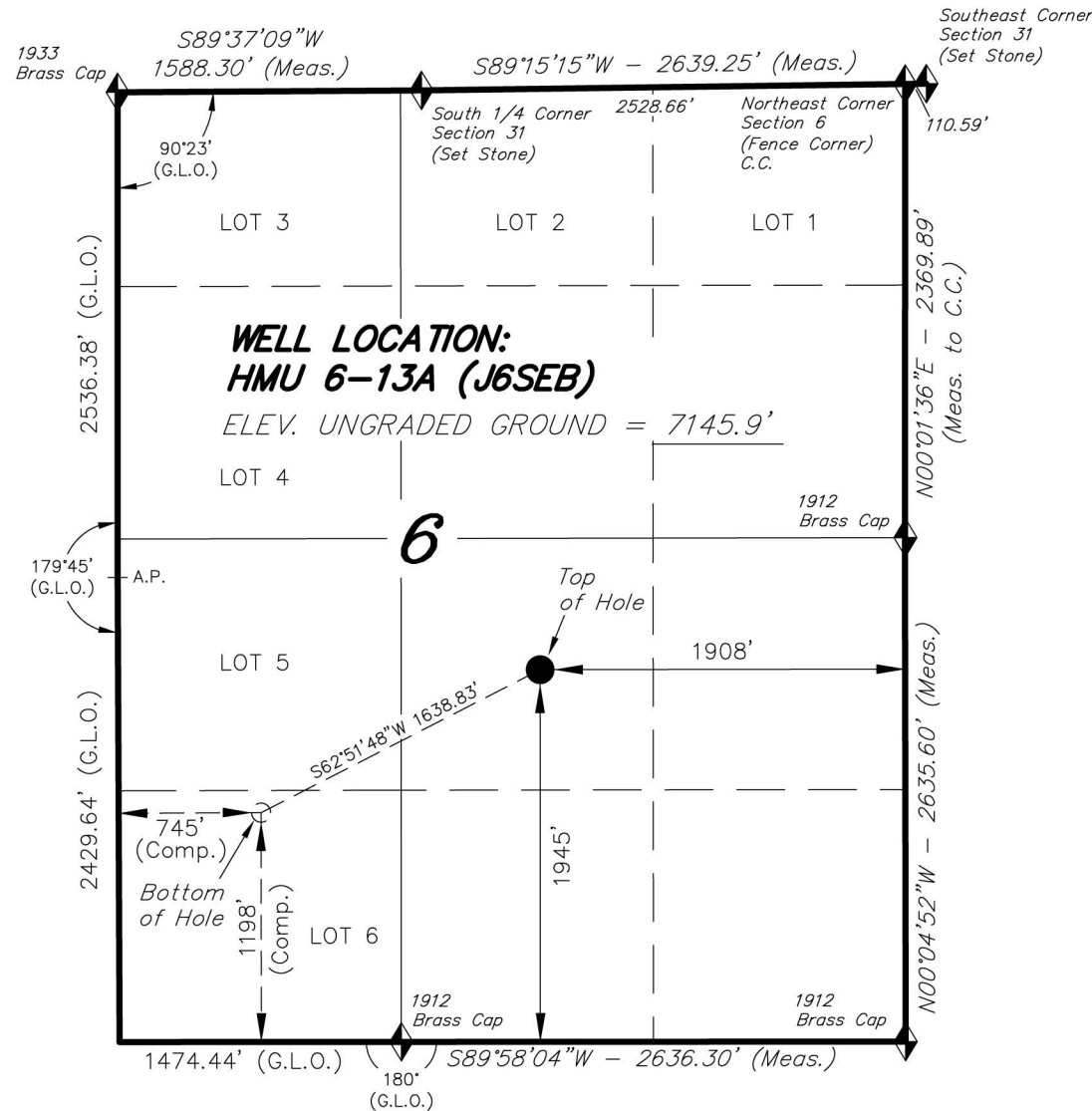


T8S, R92W, 6th P.M.

ENCANA OIL & GAS (USA) INC

WELL LOCATION, HMU 6-13A (J6SEB),
LOCATED AS SHOWN IN THE NW 1/4
SE 1/4 OF SECTION 6, T8S, R92W, 6th
P.M. GARFIELD COUNTY, COLORADO.

TARGET BOTTOM HOLE, HMU 6-13A
(J6SEB), LOCATED AS SHOWN IN LOT 6
OF SECTION 6, T8S, R92W, 6th P.M.
GARFIELD COUNTY, COLORADO.



NOTES:

1. Well footages are measured at right angles to the Section Lines.
2. Bearings are based on Global Positioning Satellite observations.

THIS IS TO CERTIFY THAT THE ABOVE PLAT WAS PREPARED FROM FIELD NOTES OF SURVEYS MADE BY ME OR UNDER MY SUPERVISION. THE LOCATION HAS BEEN STAKED ON THE GROUND AS SHOWN ON THE PLAT, AND THAT THE SAID ARE TRUE AND CORRECT TO THE BEST OF MY KNOWLEDGE AND BELIEF.

[Signature]
REGISTERED LAND SURVEYOR
REGISTRATION NO. 30125
STATE OF COLORADO

◆ = SECTION CORNERS LOCATED

Basis of elevation is the Rifle 2 Triangulation Station. 39°31'53.80" N Lat. & 107°47'07.78" W Long. (NAD 83). Elevation = 5323.1' (NAVD88).

NAD 83 (SURFACE HOLE LOCATION)		
LATITUDE =	39°23'14.82"	(39.387451°)
LONGITUDE =	107°42'22.04"	(107.706123°)
NAD 83 (BOTTOM HOLE LOCATION)		
LATITUDE =	39°23'07.45"	(39.385403°)
LONGITUDE =	107°42'40.62"	(107.711283°)

TRI STATE LAND SURVEYING & CONSULTING

180 NORTH VERNAL AVE. - VERNAL, UTAH 84078
(435) 781-2501

DATE SURVEYED: 12-13-11	SURVEYED BY: C.D.S	SHEET 2m OF 8
DATE DRAWN: 04-18-12	DRAWN BY: M.W.	
REVISED: 12-17-12 M.W.	SCALE: 1" = 1000'	