

Schlumberger

Company:	Encana Oil& Gas (USA) Inc
Well:	Peppler Farms 4-2-4
Field:	Wattenberg
County:	Weld
	State: Colorado

Well: **Peppler Farms 4-2-4**
Field: **Wattenberg**
County: **Weld**
State: **Colorado**

Field: **Wattenberg**
County: **Weld**
State: **Colorado**

County: **Weld** State: **Colorado**





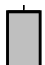
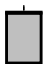


County: Weld Field: Wattenberg Location: NWNE Sec. 4, T3N, R68W Well: Pepler Farms 4-2-4 Company: Encana Oil& Gas (USA) Inc				
Platform Express Cement Volume				
LOCATION				
NWNE Sec. 4, T3N, R68W SHL: 228' FNL X 2296' FEL Lat/Long: 40.26182 N / 105.00693 W		Elev.: K.B. 5081.00 ft G.L. 5068.00 ft D.F. 5080.00 ft		
Permanent Datum: _____ Log Measured From: _____ Drilling Measured From: _____		Ground Level _____ Kelly Bushing _____ Kelly Bushing _____		
API Serial No. 05-123-34617-000C		Section 4		Township 3N
				Range 68W

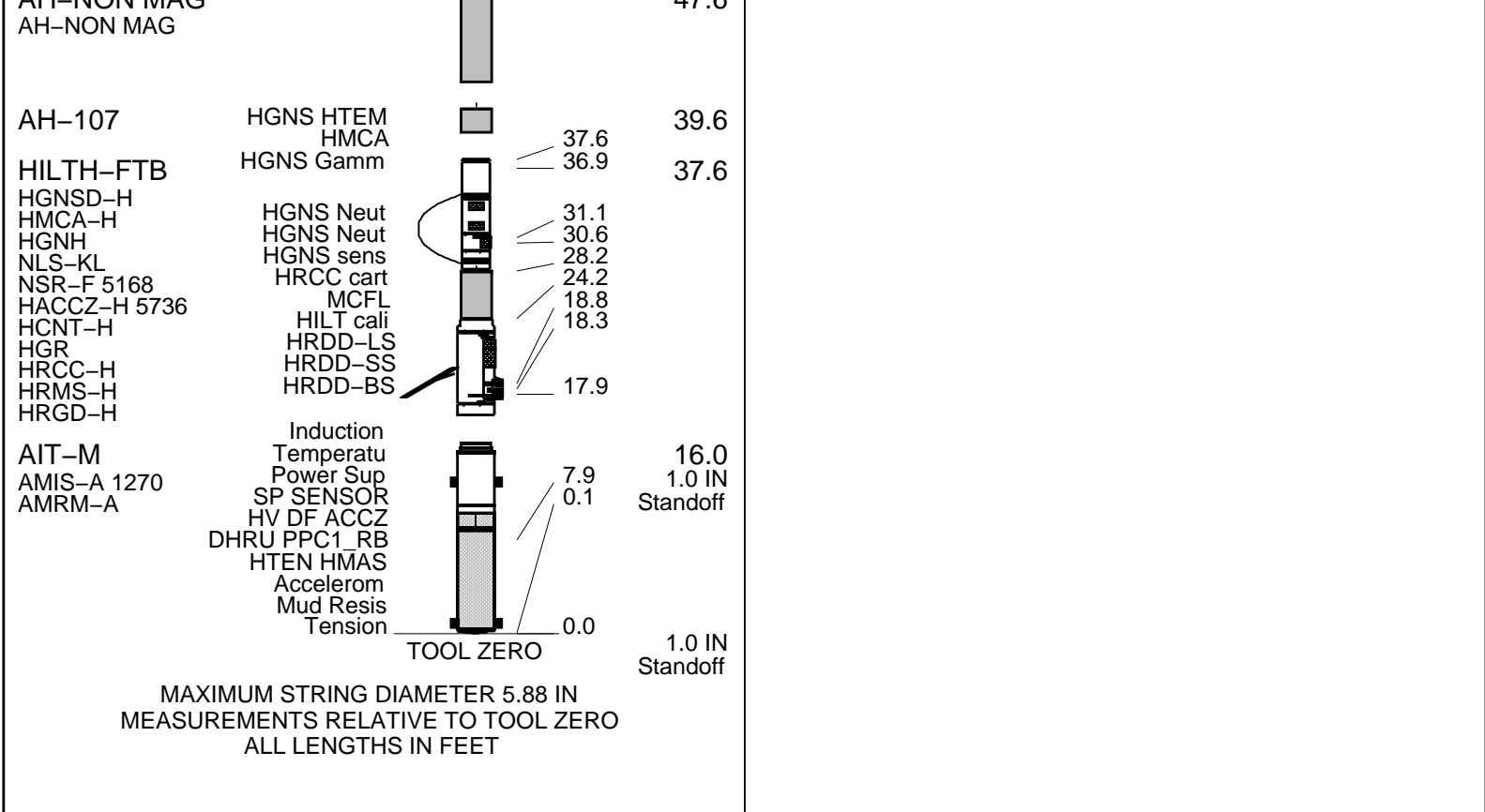
[illegible]

Logging Date	21-Sep-2012			
Run Number	1			
Depth Driller	8153 ft			
Schlumberger Depth	8127 ft			
Bottom Log Interval	8119 ft			
Top Log Interval	714 ft			
Casing Driller Size @ Depth	8.625 in @ 714 ft			@
Casing Schlumberger	714 ft			
Bit Size	7.875 in			
Type Fluid In Hole	Gel and Chemical			
Density	Viscosity	9.9 lbm/gal		53 s
Fluid Loss	PH	11.2 cm3	8	
Source Of Sample	Flowline			
RM @ Measured Temperature	1.400 ohm.m @ 105 degF			@
RMF @ Measured Temperature	1.120 ohm.m @ 105 degF			@
RMC @ Measured Temperature	1.680 ohm.m @ 105 degF			@
Source RMF	RMC	Calculated	Calculated	
RM @ MRT	RMF @ MRT	0.739 @ 205	0.591 @ 205	@
Maximum Recorded Temperatures	205 degF			@
Circulation Stopped	Time	22-Sep-2012	3:00	
Logger On Bottom	Time	22-Sep-2012	13:15	
Unit Number	Location	2135	Ft. Morgan, CO	
Recorded By	Tim Hoffman			
Witnessed By	Wes Harrison			

Logging Date				
Run Number				
Depth Driller				
Schlumberger Depth				
Bottom Log Interval				
Top Log Interval				
Casing Driller Size @ Depth		@		
Casing Schlumberger				
Bit Size				
Type Fluid In Hole				
Density	Viscosity			
Fluid Loss	PH			
Source Of Sample				
RM @ Measured Temperature		@		
RMF @ Measured Temperature		@		
RMC @ Measured Temperature		@		
Source RMF	RMC			
RM @ MRT	RMF @ MRT	@		@
Maximum Recorded Temperatures				
Circulation Stopped	Time			
Logger On Bottom	Time			
Unit Number	Location			
Recorded By				
Witnessed By				

OTHER SERVICES1	OTHER SERVICES2
OS1: MSIP	OS1:
OS2: PPC	OS2:
OS3: GPIT	OS3:
OS4:	OS4:
OS5:	OS5:
REMARKS: RUN NUMBER 1	REMARKS: RUN NUMBER 2
This is the first run in hole	
Toolstring run as per tool sketch	
Matrix: Sandstone (2.65 g/cc) from TD to 7821	
Sandstone (2.68 g/cc) from 7821 to Surface	

Bridged at 2700' on first attempt					
Rig: Ensign 122					
Crew: Ian Derry, Alonzo Carrera					
RUN 1			RUN 2		
SERVICE ORDER #:		BFN8-00193	SERVICE ORDER #:		
PROGRAM VERSION:		19C1-222	PROGRAM VERSION:		
FLUID LEVEL:		300 ft	FLUID LEVEL:		
LOGGED INTERVAL	START	STOP	LOGGED INTERVAL	START	STOP
EQUIPMENT DESCRIPTION					
RUN 1			RUN 2		
SURFACE EQUIPMENT					
WITM (EDTS)-A					
GSR-U/Y NCT-B CNB-AB NCS-VB					
DOWNHOLE EQUIPMENT					
LEH-QT	MDSB_EDTC		112.4	115.4	
LEH-QT	Mud Tempe		108.9		
EDTC-B	CTEM		107.1	112.4	
EDTH-B	Gamma Ray				
EDTC-B	EFTB DIAG				
EDTG-A/B	TelStatus		105.9		
MAPC-B	EDTCB Ele				
MAPC-BA				105.9	
ECH-SF					
MAMS-BA					
	MAMS-PS		90.5		
MAXS-B				84.9	
MASS-BA					
MAXS-BA					
	MAXS-PS		64.7		
PPC1	Calipers		63.5	64.7	
PPC1-B					
PPC_CAL_STD	PPC_Cartr		58.1		
AH-NON MAG				58.1	
AH-NON MAG					
GPIT-F				53.6	
GPIH-B					
AH-107				49.6	
AH_NON MAG				47.6	



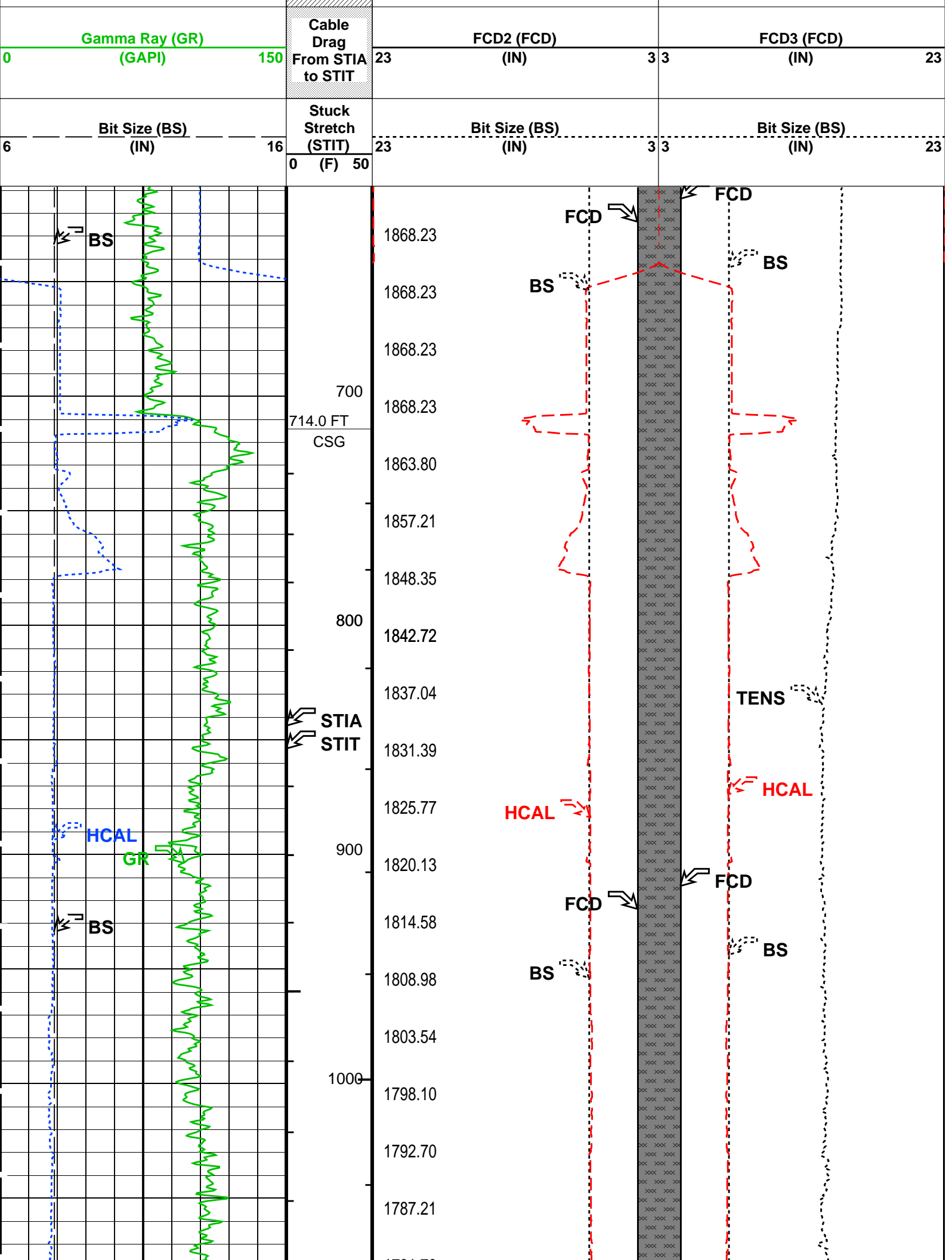
Input DLIS Files						
DEFAULT	AIT_TLD_MCFL_CNL_IS_021LUP	FN:20	PRODUCER	22-Sep-2012 13:19	8155.5 FT	606.7 FT
Output DLIS Files						
DEFAULT	AIT_TLD_MCFL_CNL_IS_031PUP	FN:30	PRODUCER	22-Sep-2012 16:44	8157.0 FT	608.0 FT

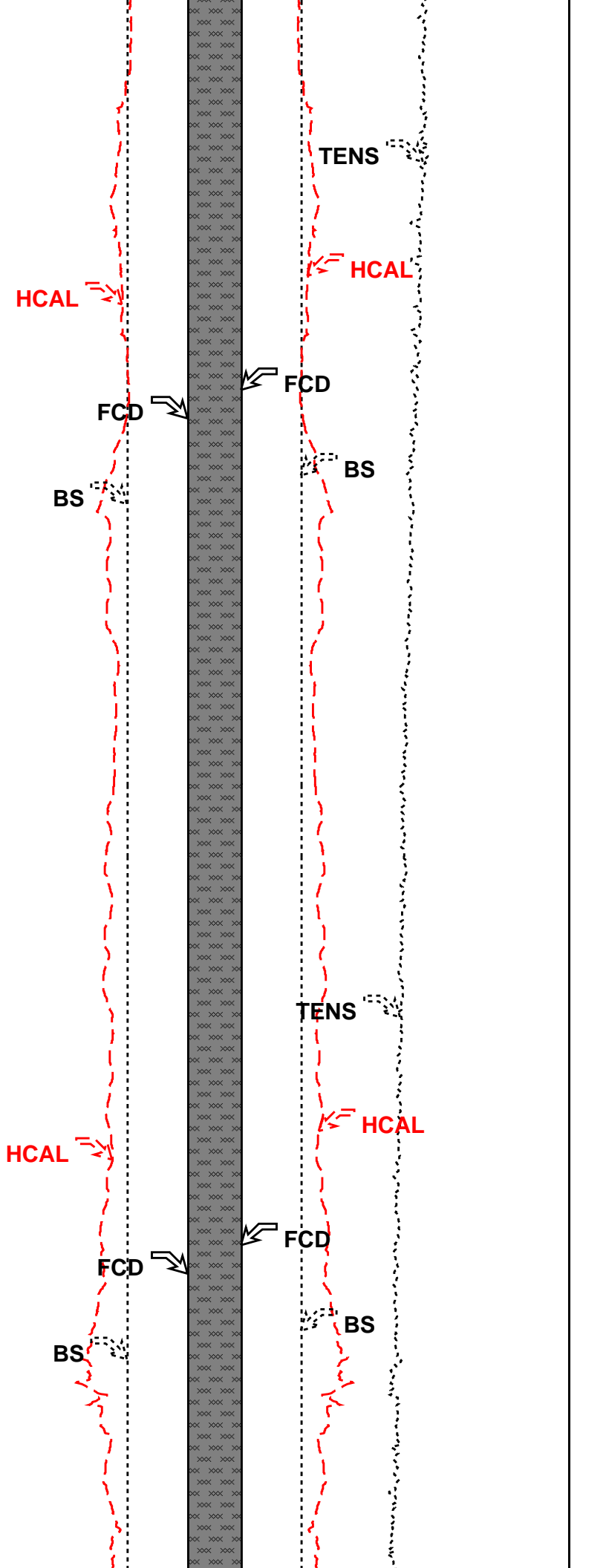
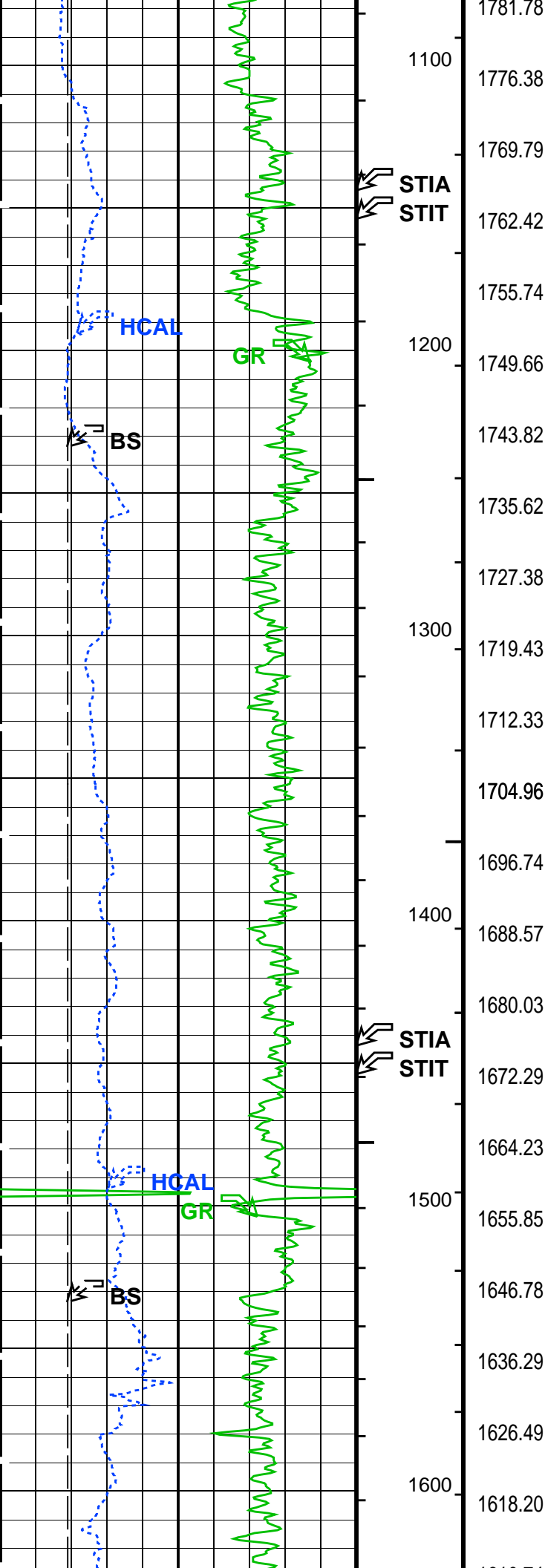
Integrated Hole/Cement Volume Summary	
Hole Volume = 13.08 F3	
Cement Volume = 8.99 F3 (assuming 4.50 IN casing O.D.)	
Computed from 8127.0 FT to 8090.5 FT using data channel(s) HCAL	

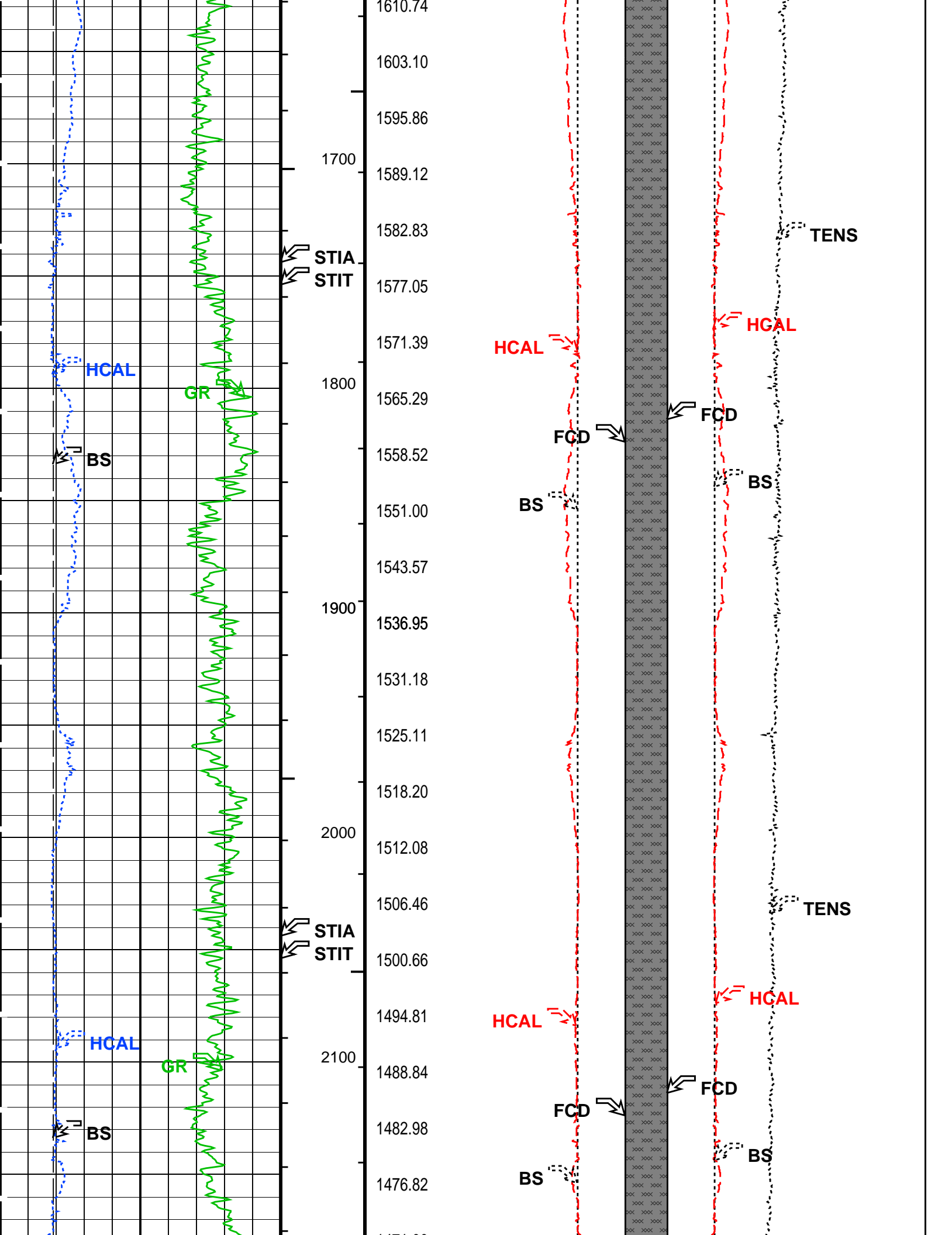
OP System Version: 19C1-222			
AIT-M	19C1-222	HILTH-FTB	19C1-222
GPIT-F	19C1-222	PPC1	19C1-222
MAXS-B	19C1-222	MAPC-B	19C1-222
EDTC-B	19C1-222		

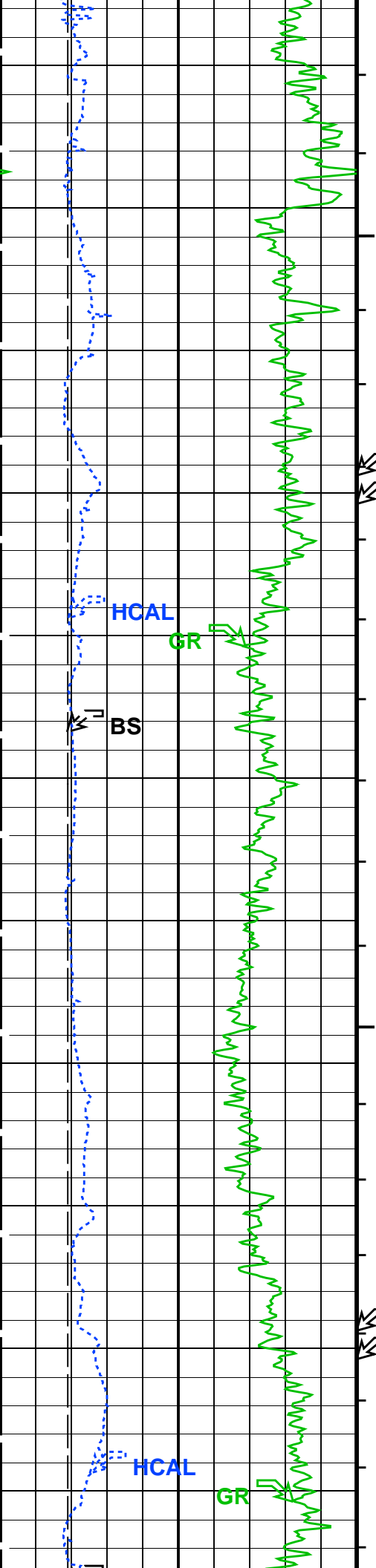
PIP SUMMARY	
└ Integrated Hole Volume Minor Pip Every 10 F3	
└ Integrated Hole Volume Major Pip Every 100 F3	
└ Integrated Cement Volume Minor Pip Every 10 F3	
└ Integrated Cement Volume Major Pip Every 100 F3	
Time Mark Every 60 S	

FCD2 - FCD3		From FCD2 to FCD3	
Cement Volume (ICV) (F3)		Tension (TENS) (LBF)	
6000		0	
HILT Caliper (HCAL) (IN)		HILT Caliper (HCAL) (IN)	
6		23	
16		3	
Tool/Tot. Drag From D3T to STIA		23	









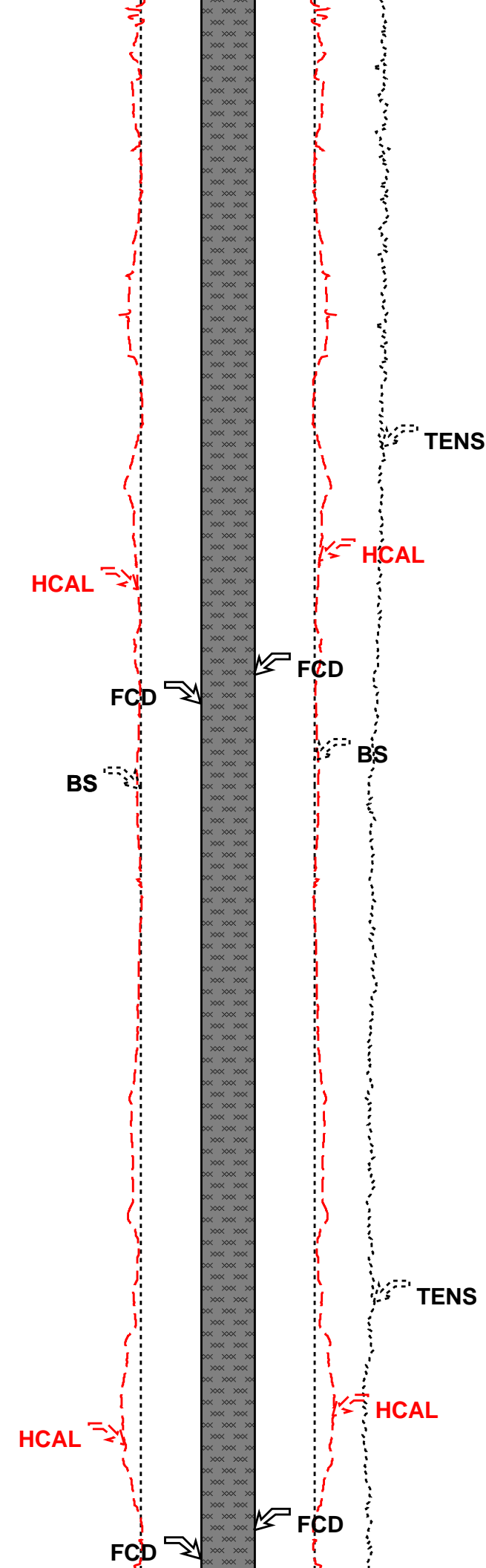
2200 1471.00
1464.70
1458.31
1452.53
1445.79
2300 1438.75
1433.09
1426.09
2400 1419.66
1413.57
1407.58
1401.48
2500 1395.48
1389.78
1383.80
1377.58
1370.70
2600 1363.88
1357.63
1350.66
2700 1342.63
1335.47

STIA
STIT

HCAL

GR

BS



HCAL

BS

TENS

HCAL

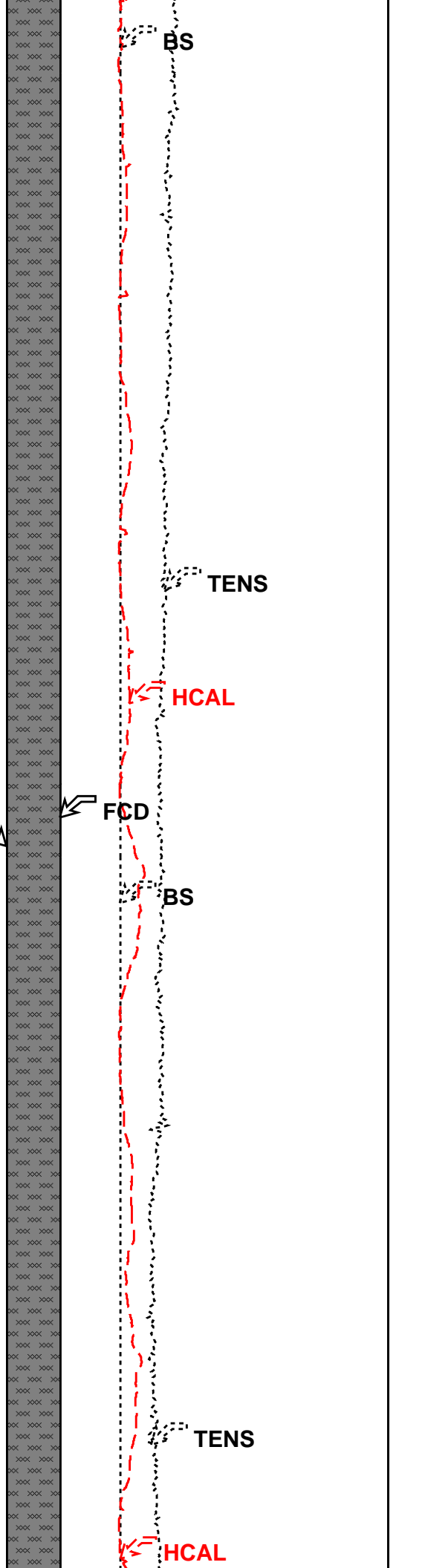
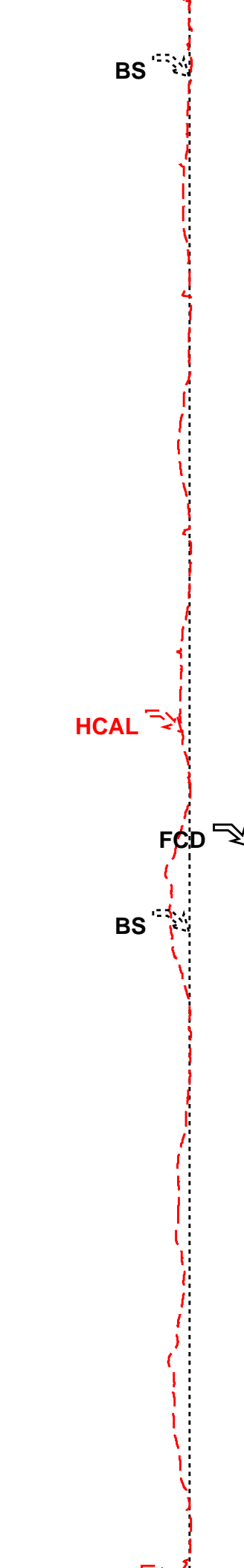
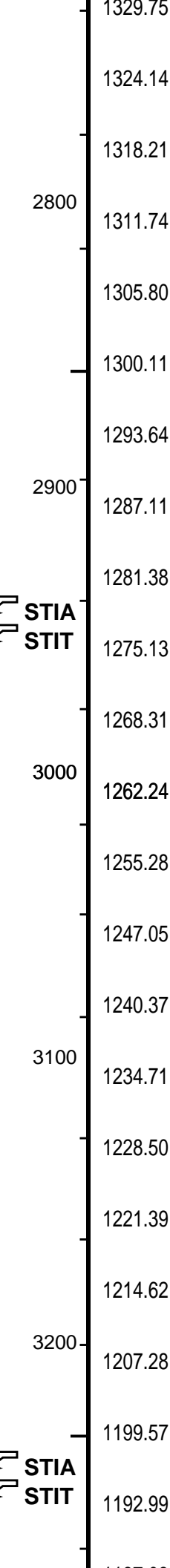
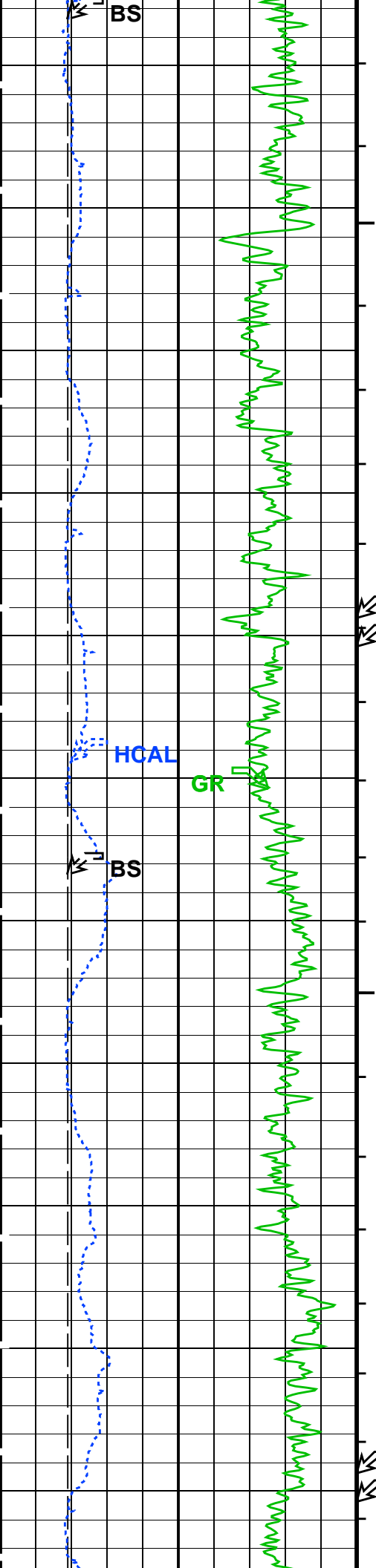
HCAL

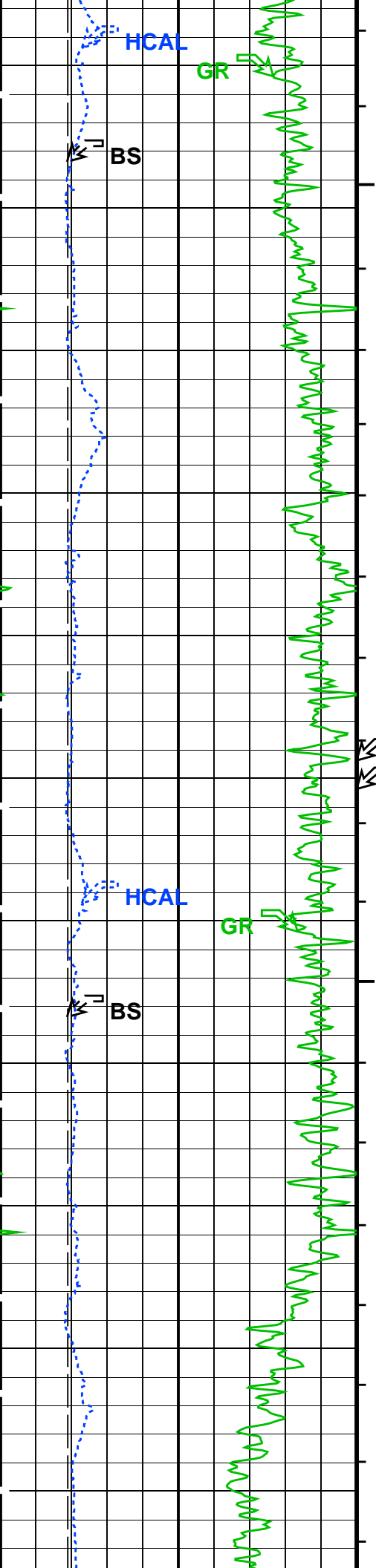
FCD

FCD

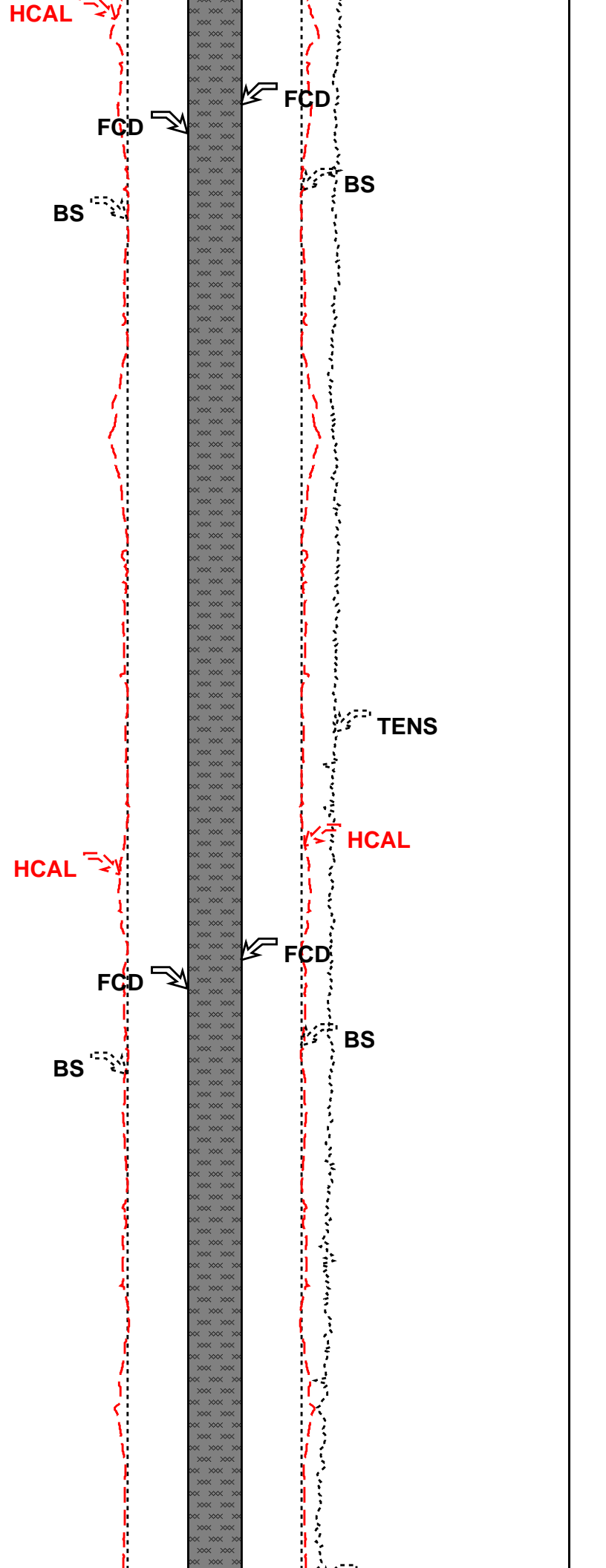
FCD

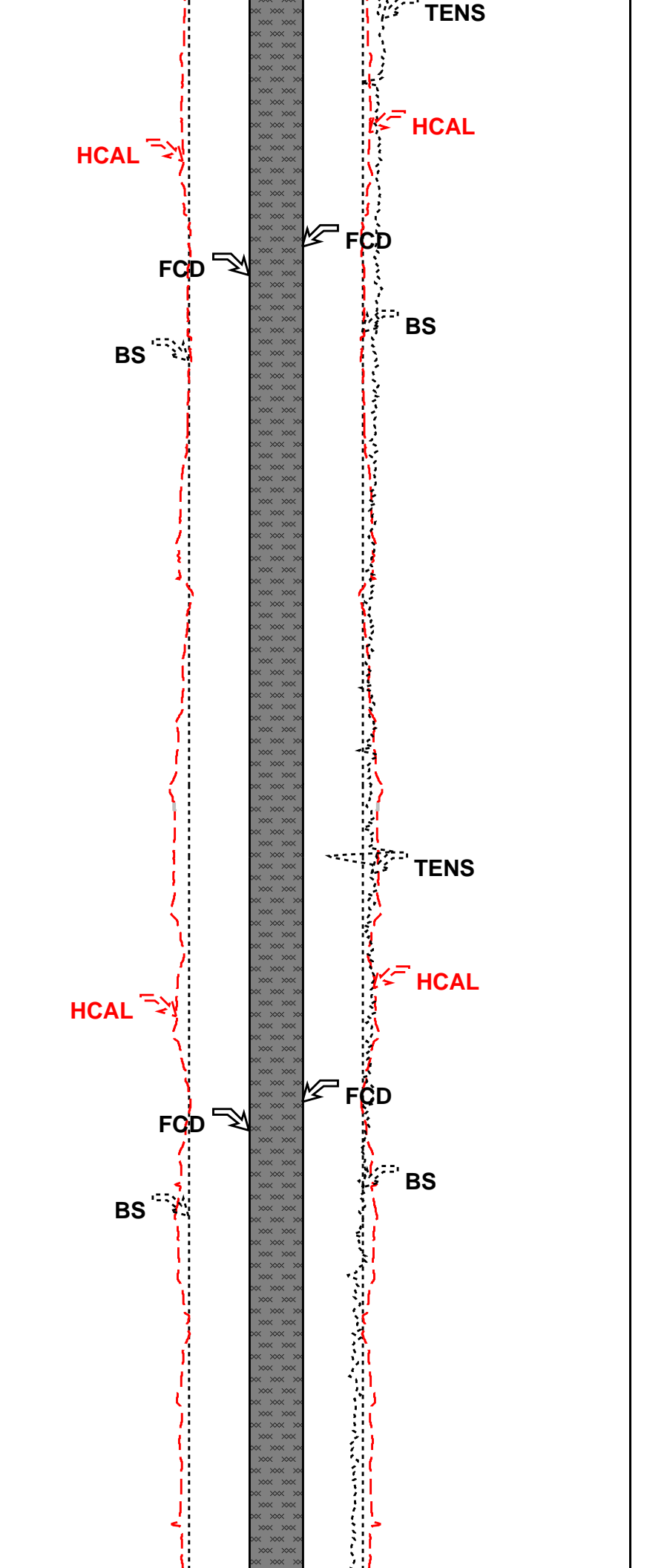
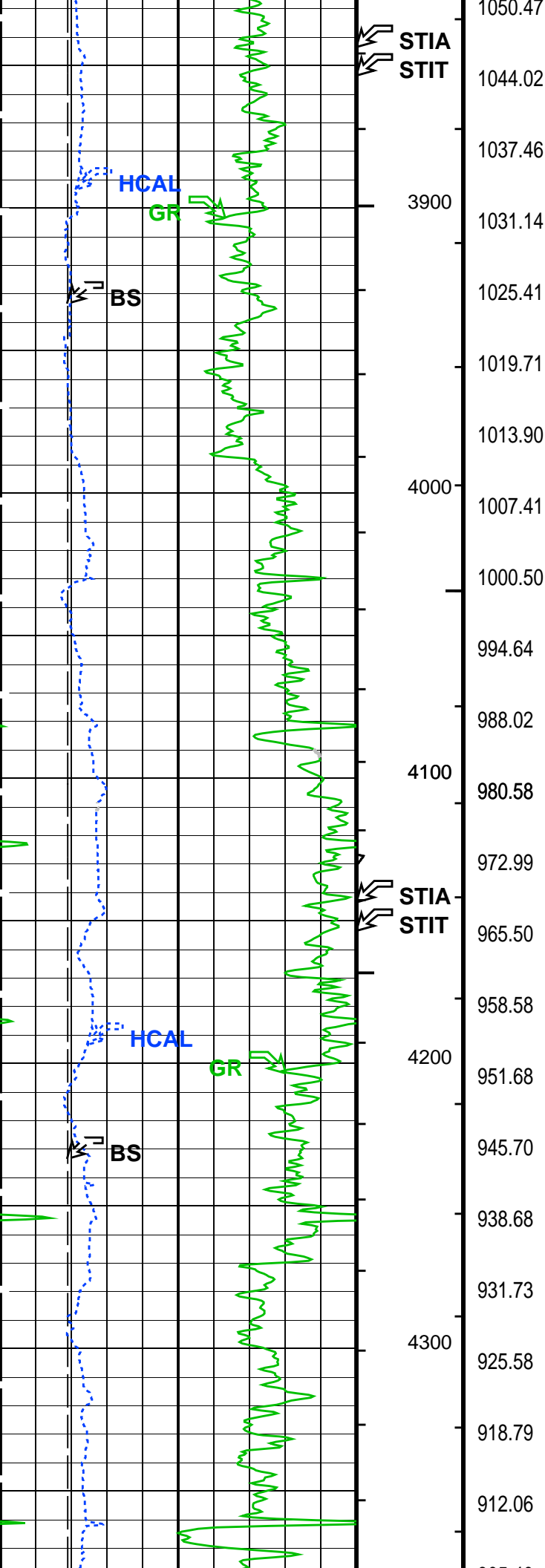
FCD

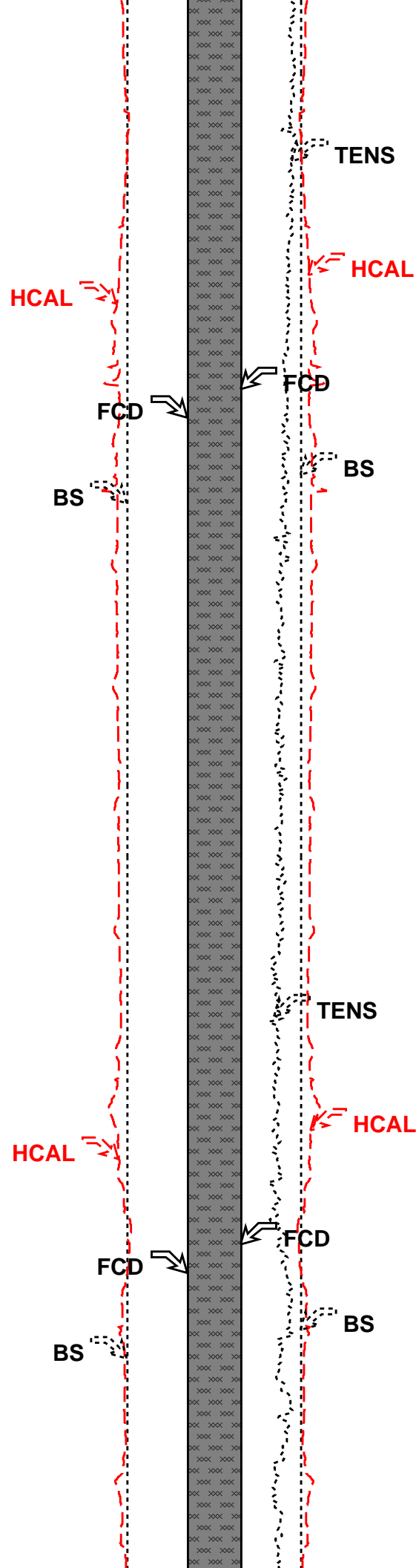
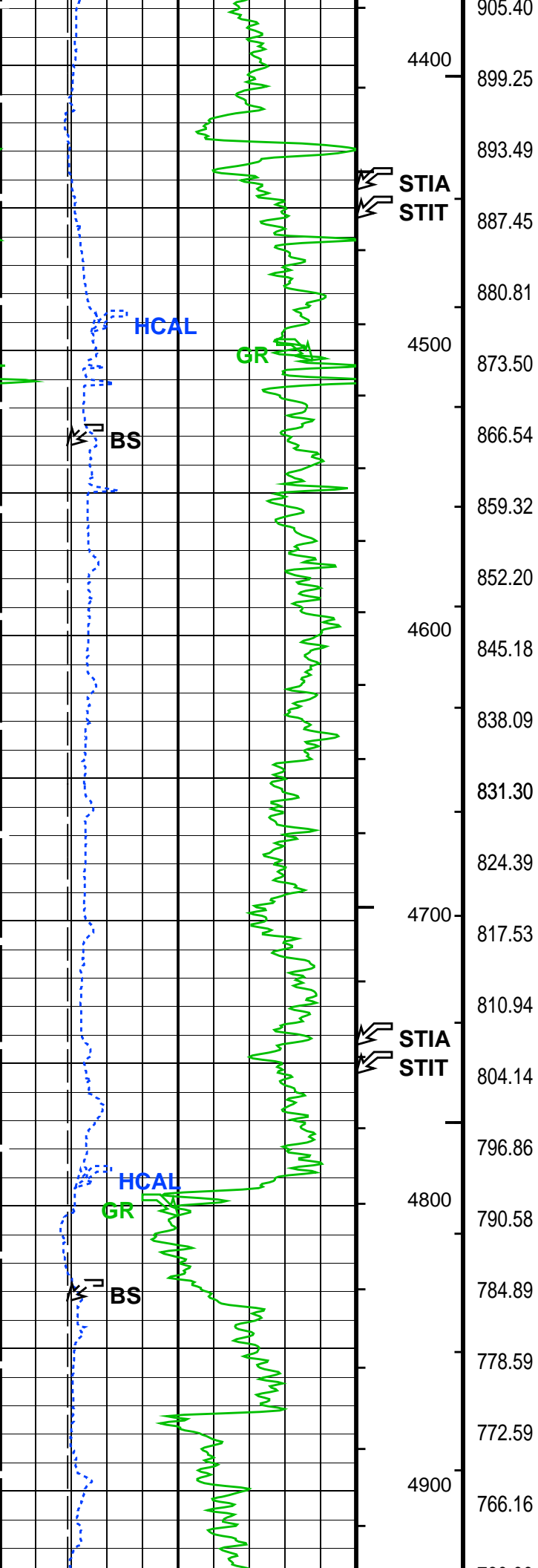


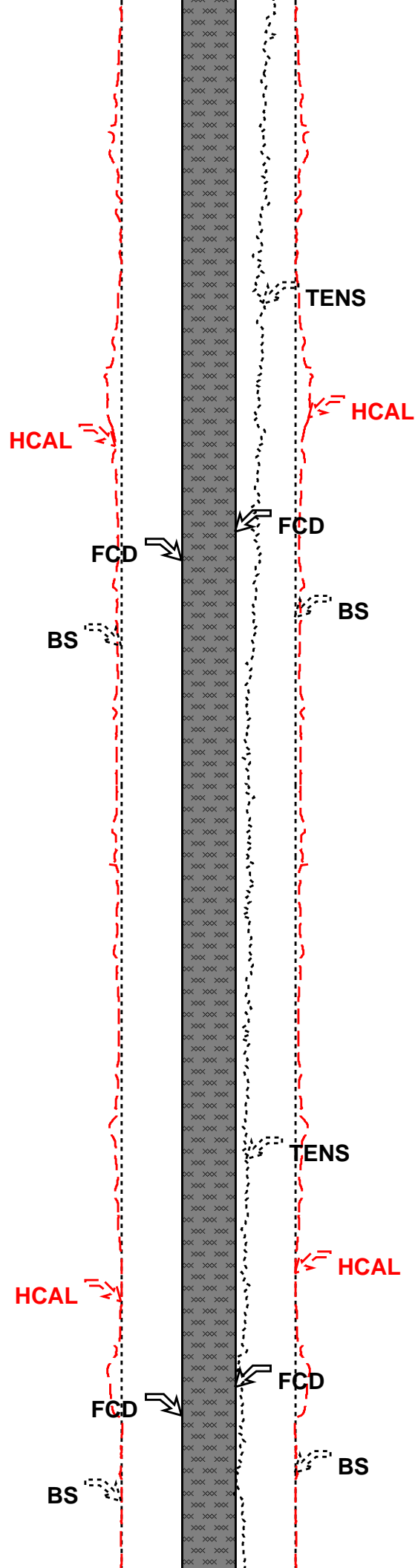
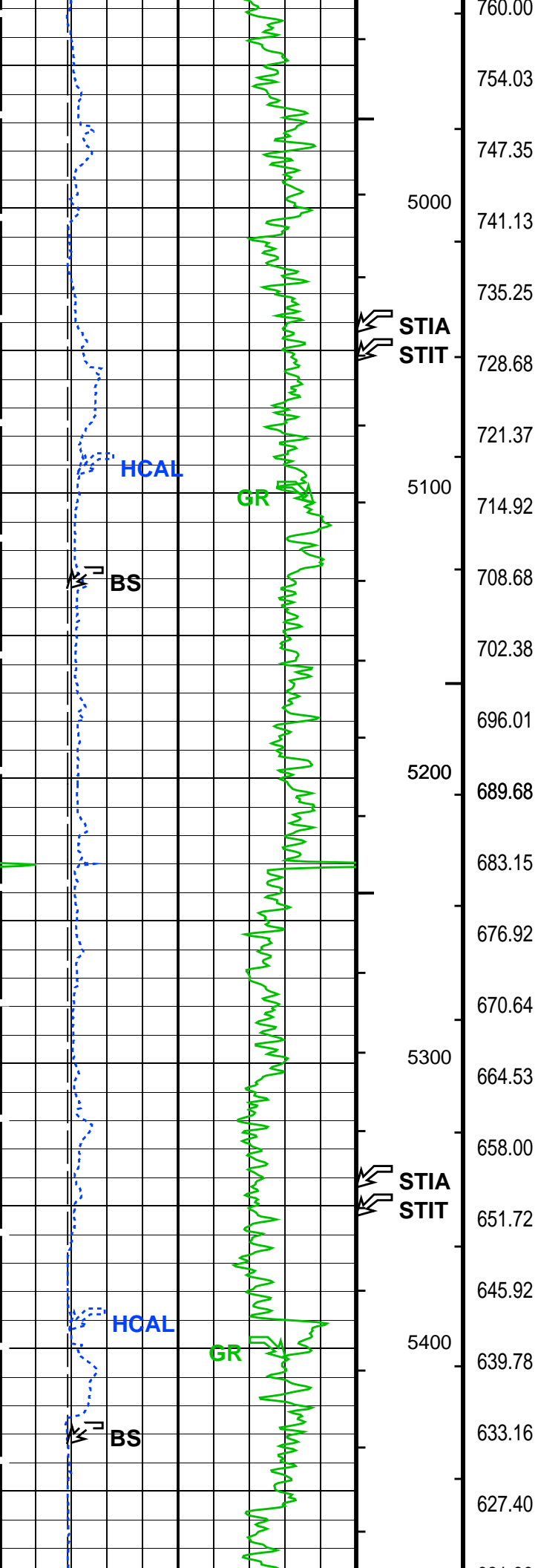


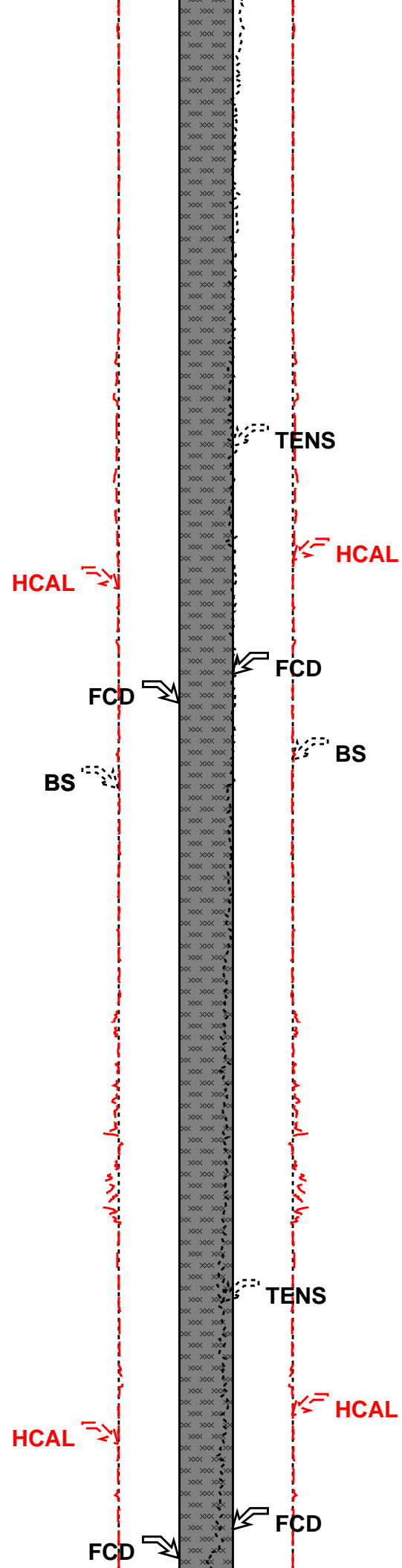
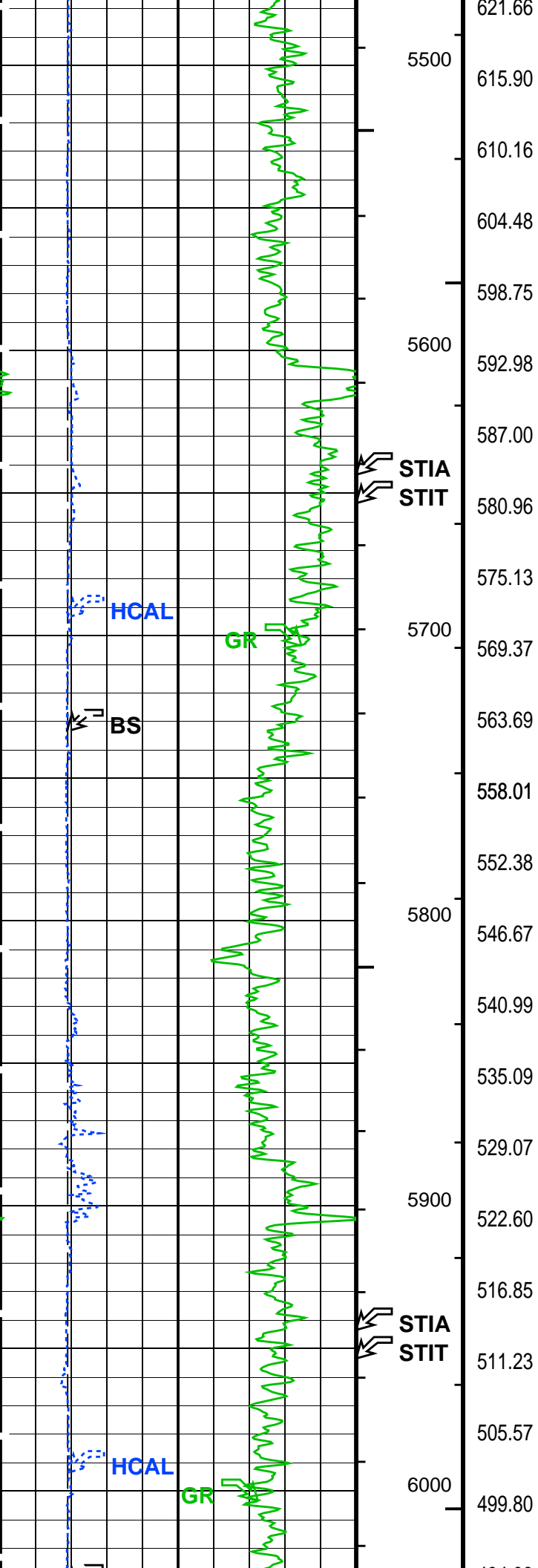
1187.08
1180.18
1173.62
1167.88
1161.93
1155.93
1148.72
1141.88
1135.96
1129.87
1123.95
1118.12
1112.10
1105.53
1099.51
1093.57
1087.45
1081.56
1075.33
1069.47
1062.74
1056.64

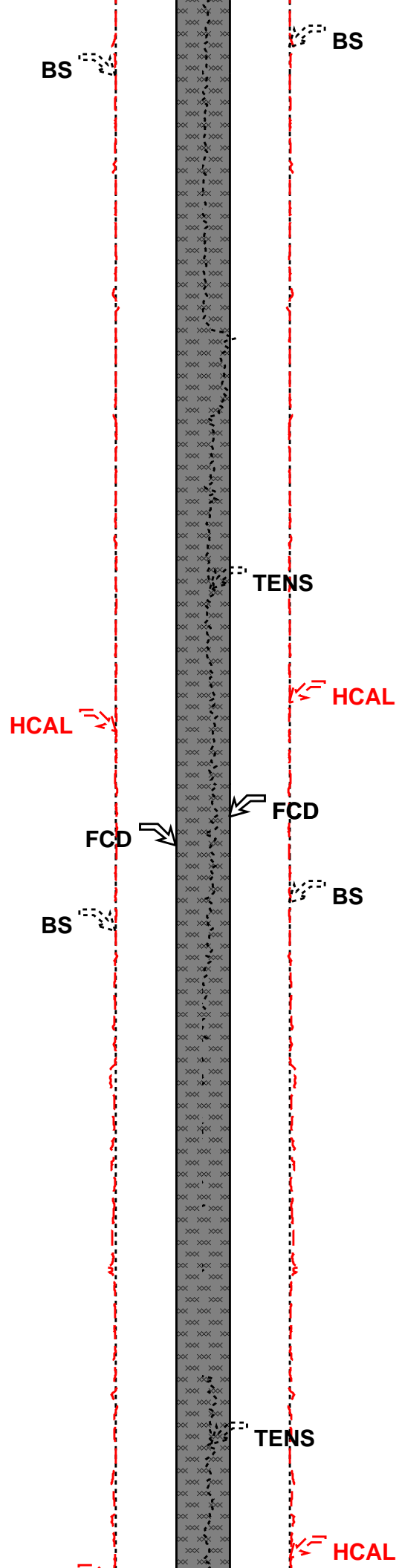
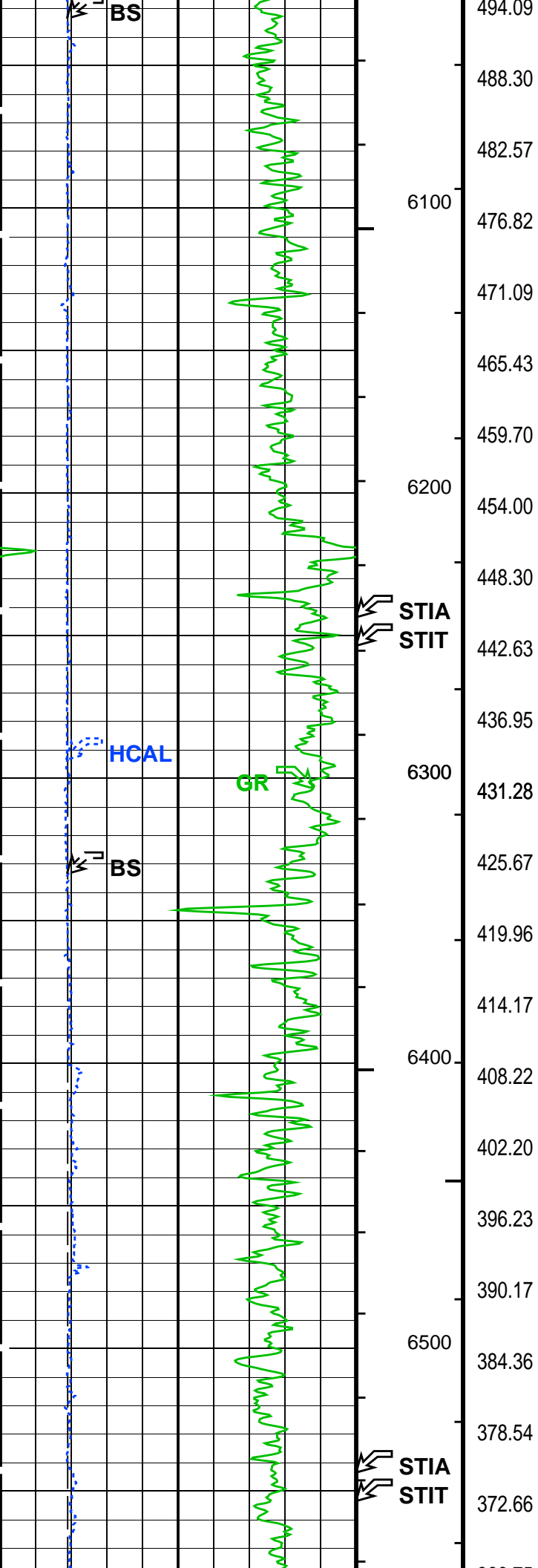


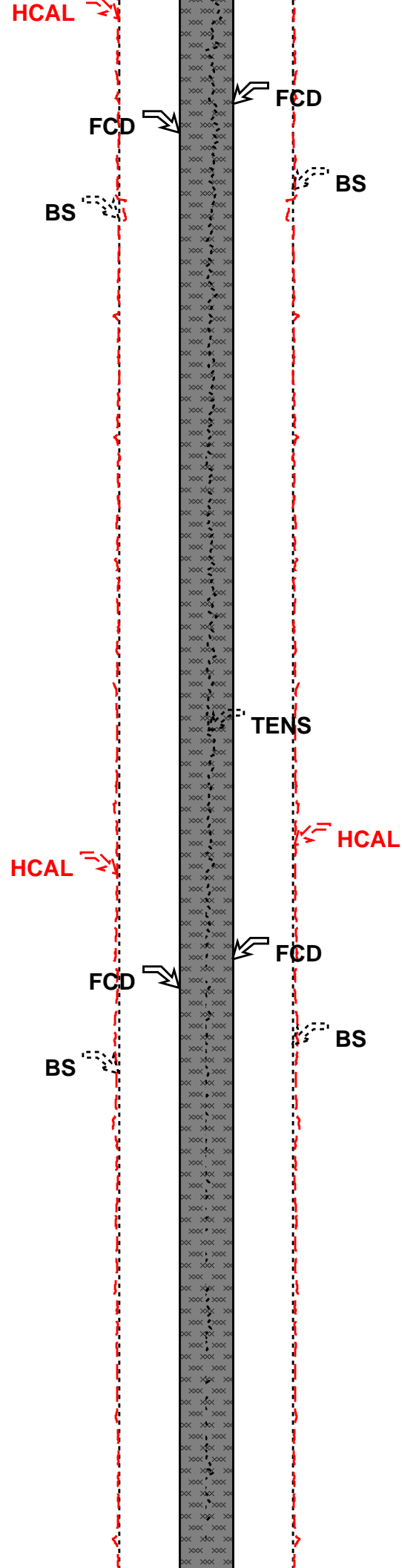
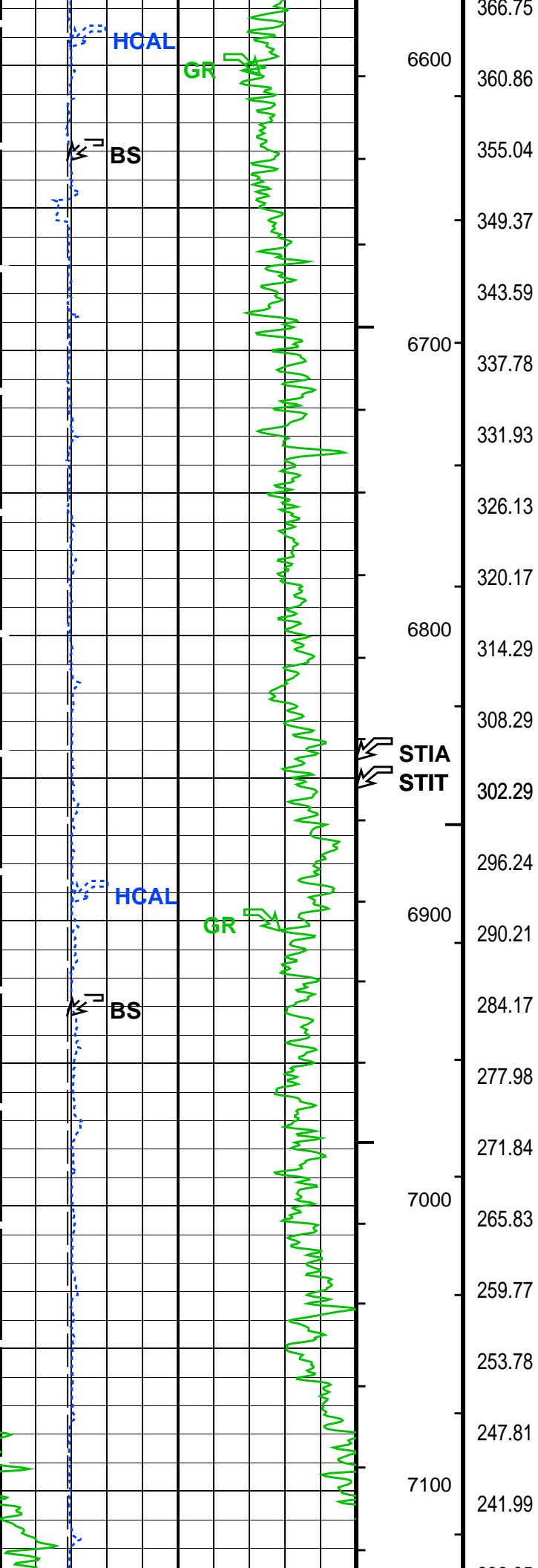


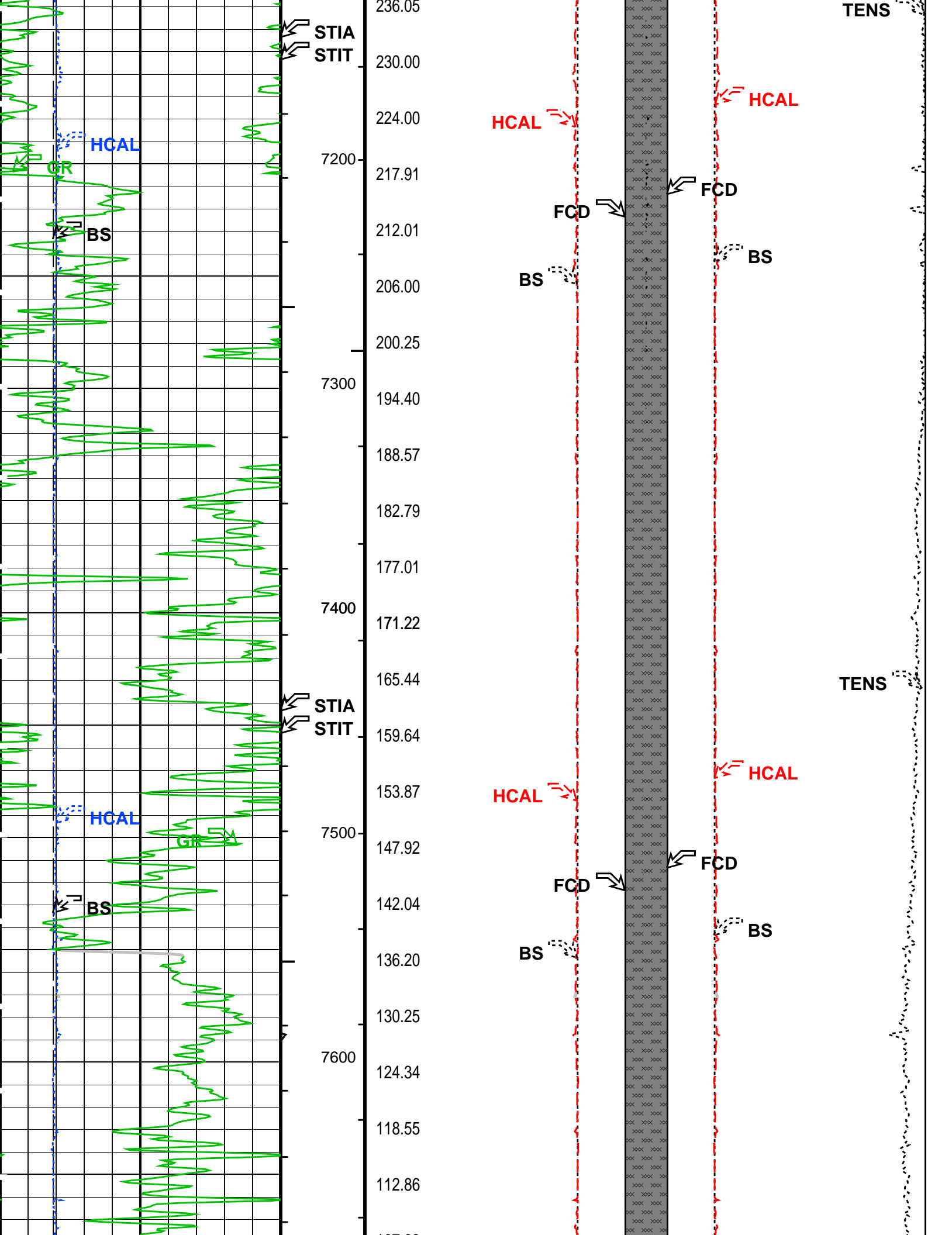


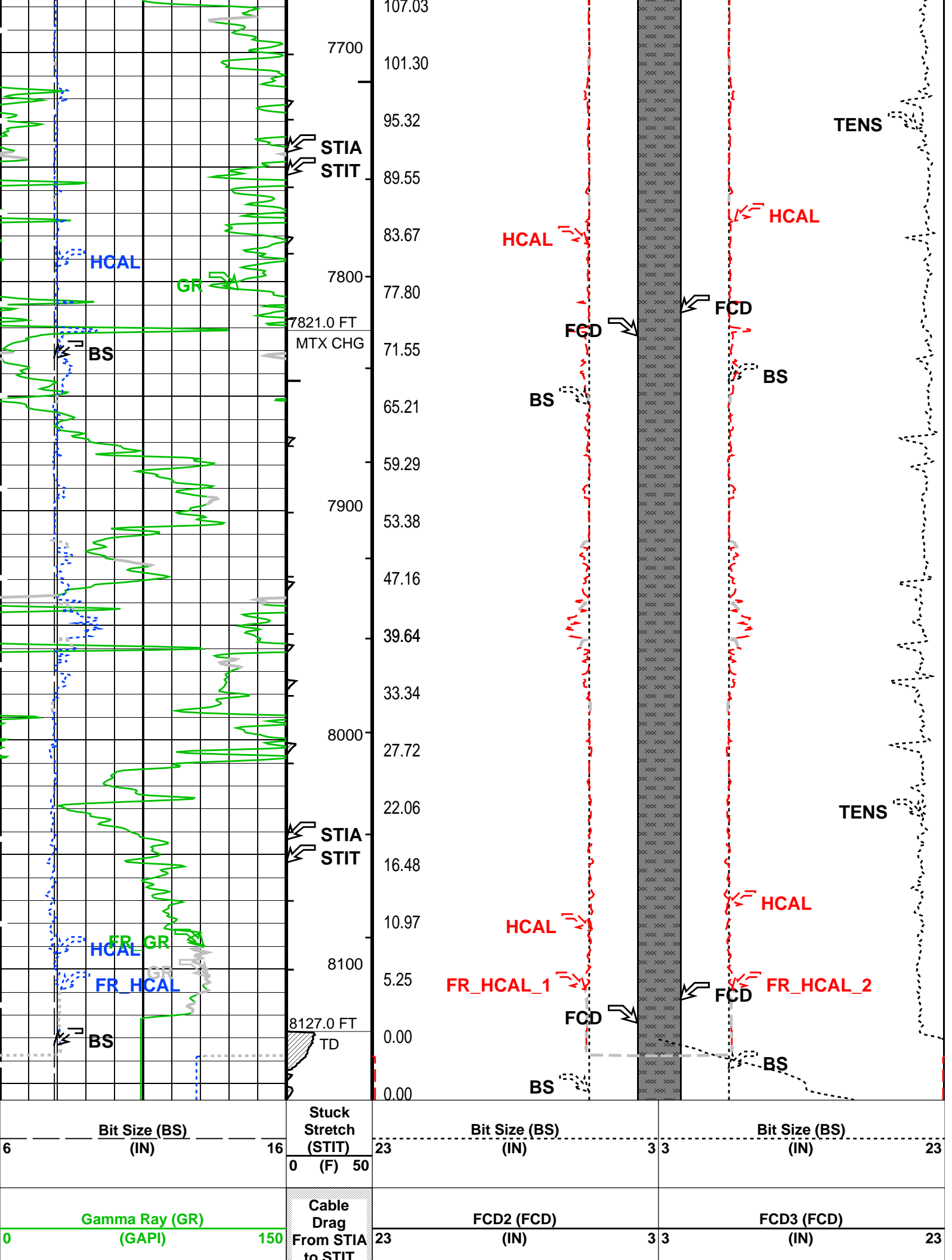












		TO STIA				
HILT Caliper (HCAL) (IN)		Tool/Tot. Drag From D3T to STIA	HILT Caliper (HCAL) (IN)		HILT Caliper (HCAL) (IN)	
6	16		23	3	3	23
			Cement Volume (ICV) (F3)		Tension (TENS) (LBF)	
				6000	0	
FCD2 – FCD3 From FCD2 to FCD3						

PIP SUMMARY						
└ Integrated Hole Volume Minor Pip Every 10 F3						
└ Integrated Hole Volume Major Pip Every 100 F3						
└ Integrated Cement Volume Minor Pip Every 10 F3						
└ Integrated Cement Volume Major Pip Every 100 F3						
Time Mark Every 60 S						

Parameters			
DLIS Name	Description	Value	
BS	MAPC–B: Multimode Array Sonic Power Cartridge Bit Size	7.875	IN
SPVD	DIR: Directional Survey Computation		
TIMD	TVD of Starting Point	0	FT
TIVD	Along–hole depth of Tie–in Point	0	FT
FCD	TVD of Tie–in Point	0	FT
HVCS	HOLEV: Integrated Hole/Cement Volume		
	Future Casing (Outer) Diameter	4.5	IN
	Integrated Hole Volume Caliper Selection	HCAL	
LBFR	STI: Stuck Tool Indicator		
STKT	Trigger for MAXIS First Reading Label	TDL	
TDD	STI Stuck Threshold	2.5	FT
TDL	Total Depth – Driller	8153.00	FT
	Total Depth – Logger	8127.00	FT
	System and Miscellaneous		
DO	Depth Offset for Playback	1.0	FT
DORL	Depth Offset for Repeat Analysis	0.0	FT
PP	Playback Processing	OFF	
TD	Total Depth	8127	FT

Format: G_DCAL_FORMAT		Vertical Scale: 2" per 100'		Graphics File Created: 22-Sep-2012 16:44	
OP System Version: 19C1-222					
AIT-M	19C1-222	HILTH-FTB	19C1-222		
GPIT-F	19C1-222	PPC1	19C1-222		
MAXS-B	19C1-222	MAPC-B	19C1-222		
EDTC-B	19C1-222				

Input DLIS Files						
DEFAULT	AIT_TLD_MCFL_CNL_IS_021LUP	FN:20	PRODUCER	22–Sep–2012 13:19	8155.5 FT	606.7 FT
Output DLIS Files						
DEFAULT	AIT_TLD_MCFL_CNL_IS_031PUP	FN:30	PRODUCER	22–Sep–2012 16:44		

Company:	Encana Oil& Gas (USA) Inc	Schlumberger				
Well:	Peppler Farms 4–2–4					
Field:	Wattenberg					
County:	Weld					
State:	Colorado					

Platform Express						
Cement Volume						

