

Anadarko Petroleum Corp.

Weld County, CO (NAD 83)

Sec. 28-T1N-R67W

Howard 2C-33HZ

Plan A Rev 0

Plan: Plan A Rev 0 Permit

Sperry Drilling Services

Proposal Report

12 December, 2012

Well Coordinates: 1,253,805.64 N, 3,170,662.77 E (40° 01' 42.51" N, 104° 53' 26.03" W)

Ground Level: 4,983.00 ft

Local Coordinate Origin:

Centered on Well Howard 2C-33HZ

Viewing Datum:

RKB=17 @ 5000.00ft (Drilling Rig)

TVDs to System:

N

North Reference:

True

Unit System:

API - US Survey Feet - Custom

Geodetic Scale Factor Applied

Version: 2003.16 Build: 431

HALLIBURTON

Project: Weld County, CO (NAD 83)
 Site: Sec. 28-T1N-R67W
 Well: Howard 2C-33HZ
 Wellbore: Plan A Rev 0
 Design: Plan A Rev 0 Permit

Anadarko Petroleum Corp.

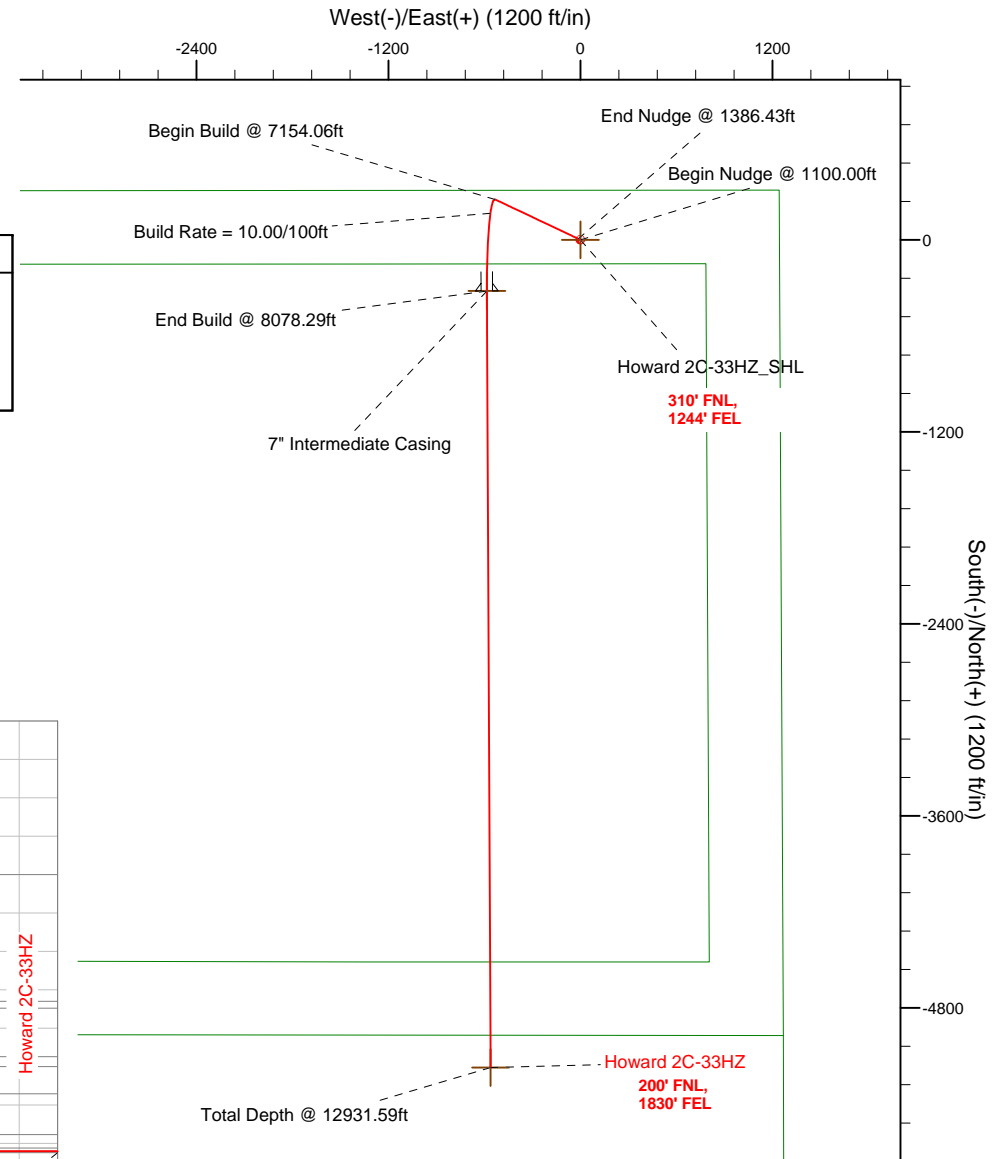
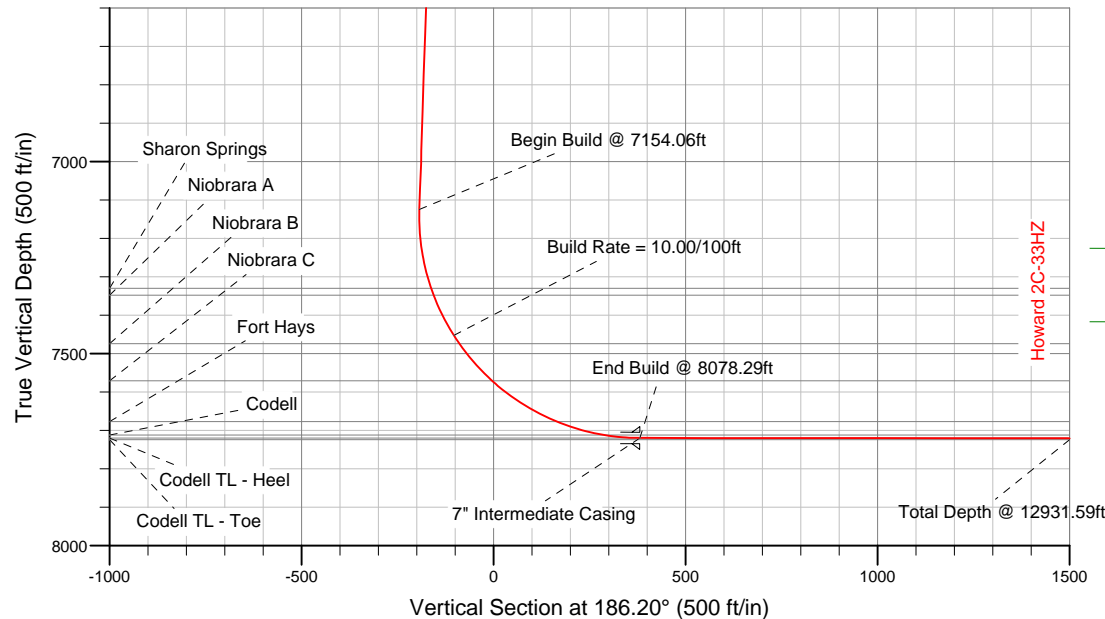
HALLIBURTON
 Sperry Drilling

SECTION DETAILS

Sec	MD	Inc	Azi	TVD	+N/-S	+E/-W	DLeg	TFace	VSec	Target
1	0.00	0.00	0.00	0.00	0.00	0.00	0.00	0.00	0.00	
2	1100.00	0.00	0.00	1100.00	0.00	0.00	0.00	0.00	0.00	
3	1386.43	5.73	295.31	1385.95	6.12	-12.93	2.00	295.31	-4.68	
4	7154.06	5.73	295.31	7124.78	252.20	-533.38	0.00	0.00	-193.16	
5	8078.29	89.95	179.73	7720.00	-320.00	-584.50	10.00	-115.47	381.21	Howard 2C-33HZ_CP
6	12931.59	89.95	179.73	7724.00	-5173.24	-561.61	0.00	0.00	5203.64	Howard 2C-33HZ_BHL

WELLBORE TARGET DETAILS (LAT/LONG)

Name	TVD	+N/-S	+E/-W	Latitude	Longitude	Shape
Howard 2C-33HZ_SHL	0.00	0.00	0.00	40.028474	-104.890565	Point
Howard 2C-33HZ_CP	7720.00	-320.00	-584.50	40.027596	-104.892652	Point
Howard 2C-33HZ_BHL	7724.00	-5173.24	-561.61	40.014273	-104.892570	Point



WELL DETAILS: Howard 2C-33HZ

Ground Level: 4983.00 RKB=17 @ 5000.00ft (Drilling Rig)

Plan: Plan A Rev 0 Permit (Howard 2C-33HZ/Plan A Rev 0)

Created By: Fred Hartmann Date: 12/03/2012
 Reviewed: _____ Date: _____

Plan Report for Howard 2C-33HZ - Plan A Rev 0 Permit

Measured Depth (ft)	Inclination (°)	Azimuth (°)	Vertical Depth (ft)	+N/-S (ft)	+E/-W (ft)	Vertical Section (ft)	Dogleg Rate (°/100ft)	Build Rate (°/100ft)	Turn Rate (°/100ft)	Toolface Azimuth (°)
0.00	0.00	0.00	0.00	0.00	0.00	0.00	0.00	0.00	0.00	0.00
100.00	0.00	0.00	100.00	0.00	0.00	0.00	0.00	0.00	0.00	0.00
200.00	0.00	0.00	200.00	0.00	0.00	0.00	0.00	0.00	0.00	0.00
300.00	0.00	0.00	300.00	0.00	0.00	0.00	0.00	0.00	0.00	0.00
400.00	0.00	0.00	400.00	0.00	0.00	0.00	0.00	0.00	0.00	0.00
500.00	0.00	0.00	500.00	0.00	0.00	0.00	0.00	0.00	0.00	0.00
600.00	0.00	0.00	600.00	0.00	0.00	0.00	0.00	0.00	0.00	0.00
700.00	0.00	0.00	700.00	0.00	0.00	0.00	0.00	0.00	0.00	0.00
800.00	0.00	0.00	800.00	0.00	0.00	0.00	0.00	0.00	0.00	0.00
900.00	0.00	0.00	900.00	0.00	0.00	0.00	0.00	0.00	0.00	0.00
1,000.00	0.00	0.00	1,000.00	0.00	0.00	0.00	0.00	0.00	0.00	0.00
1,100.00	0.00	0.00	1,100.00	0.00	0.00	0.00	0.00	0.00	0.00	0.00
Begin Nudge @ 1100.00ft										
1,200.00	2.00	295.31	1,199.98	0.75	-1.58	-0.57	2.00	2.00	0.00	295.31
1,300.00	4.00	295.31	1,299.84	2.98	-6.31	-2.28	2.00	2.00	0.00	0.00
1,386.43	5.73	295.31	1,385.95	6.12	-12.93	-4.68	2.00	2.00	0.00	0.00
End Nudge @ 1386.43ft										
1,400.00	5.73	295.31	1,399.46	6.69	-14.16	-5.13	0.00	0.00	0.00	0.00
1,500.00	5.73	295.31	1,498.96	10.96	-23.18	-8.40	0.00	0.00	0.00	0.00
1,600.00	5.73	295.31	1,598.46	15.23	-32.21	-11.66	0.00	0.00	0.00	0.00
1,700.00	5.73	295.31	1,697.96	19.49	-41.23	-14.93	0.00	0.00	0.00	0.00
1,800.00	5.73	295.31	1,797.46	23.76	-50.25	-18.20	0.00	0.00	0.00	0.00
1,900.00	5.73	295.31	1,896.96	28.03	-59.28	-21.47	0.00	0.00	0.00	0.00
2,000.00	5.73	295.31	1,996.46	32.29	-68.30	-24.73	0.00	0.00	0.00	0.00
2,100.00	5.73	295.31	2,095.96	36.56	-77.32	-28.00	0.00	0.00	0.00	0.00
2,200.00	5.73	295.31	2,195.46	40.83	-86.35	-31.27	0.00	0.00	0.00	0.00
2,300.00	5.73	295.31	2,294.96	45.09	-95.37	-34.54	0.00	0.00	0.00	0.00
2,400.00	5.73	295.31	2,394.46	49.36	-104.39	-37.81	0.00	0.00	0.00	0.00
2,500.00	5.73	295.31	2,493.96	53.63	-113.42	-41.07	0.00	0.00	0.00	0.00
2,600.00	5.73	295.31	2,593.46	57.90	-122.44	-44.34	0.00	0.00	0.00	0.00
2,700.00	5.73	295.31	2,692.96	62.16	-131.47	-47.61	0.00	0.00	0.00	0.00
2,800.00	5.73	295.31	2,792.46	66.43	-140.49	-50.88	0.00	0.00	0.00	0.00
2,900.00	5.73	295.31	2,891.96	70.70	-149.51	-54.15	0.00	0.00	0.00	0.00
3,000.00	5.73	295.31	2,991.46	74.96	-158.54	-57.41	0.00	0.00	0.00	0.00
3,100.00	5.73	295.31	3,090.97	79.23	-167.56	-60.68	0.00	0.00	0.00	0.00
3,200.00	5.73	295.31	3,190.47	83.50	-176.58	-63.95	0.00	0.00	0.00	0.00
3,300.00	5.73	295.31	3,289.97	87.76	-185.61	-67.22	0.00	0.00	0.00	0.00
3,400.00	5.73	295.31	3,389.47	92.03	-194.63	-70.49	0.00	0.00	0.00	0.00
3,500.00	5.73	295.31	3,488.97	96.30	-203.65	-73.75	0.00	0.00	0.00	0.00
3,600.00	5.73	295.31	3,588.47	100.56	-212.68	-77.02	0.00	0.00	0.00	0.00
3,700.00	5.73	295.31	3,687.97	104.83	-221.70	-80.29	0.00	0.00	0.00	0.00
3,800.00	5.73	295.31	3,787.47	109.10	-230.73	-83.56	0.00	0.00	0.00	0.00
3,900.00	5.73	295.31	3,886.97	113.36	-239.75	-86.82	0.00	0.00	0.00	0.00
4,000.00	5.73	295.31	3,986.47	117.63	-248.77	-90.09	0.00	0.00	0.00	0.00
4,100.00	5.73	295.31	4,085.97	121.90	-257.80	-93.36	0.00	0.00	0.00	0.00
4,200.00	5.73	295.31	4,185.47	126.16	-266.82	-96.63	0.00	0.00	0.00	0.00
4,300.00	5.73	295.31	4,284.97	130.43	-275.84	-99.90	0.00	0.00	0.00	0.00
4,400.00	5.73	295.31	4,384.47	134.70	-284.87	-103.16	0.00	0.00	0.00	0.00
4,500.00	5.73	295.31	4,483.97	138.96	-293.89	-106.43	0.00	0.00	0.00	0.00
4,600.00	5.73	295.31	4,583.47	143.23	-302.91	-109.70	0.00	0.00	0.00	0.00
4,700.00	5.73	295.31	4,682.98	147.50	-311.94	-112.97	0.00	0.00	0.00	0.00
4,797.51	5.73	295.31	4,780.00	151.66	-320.74	-116.15	0.00	0.00	0.00	0.00
Sussex										
4,800.00	5.73	295.31	4,782.48	151.76	-320.96	-116.24	0.00	0.00	0.00	0.00
4,900.00	5.73	295.31	4,881.98	156.03	-329.99	-119.50	0.00	0.00	0.00	0.00
5,000.00	5.73	295.31	4,981.48	160.30	-339.01	-122.77	0.00	0.00	0.00	0.00
5,100.00	5.73	295.31	5,080.98	164.56	-348.03	-126.04	0.00	0.00	0.00	0.00
5,200.00	5.73	295.31	5,180.48	168.83	-357.06	-129.31	0.00	0.00	0.00	0.00

Plan Report for Howard 2C-33HZ - Plan A Rev 0 Permit

Measured Depth (ft)	Inclination (°)	Azimuth (°)	Vertical Depth (ft)	+N-S (ft)	+E-W (ft)	Vertical Section (ft)	Dogleg Rate (°/100ft)	Build Rate (°/100ft)	Turn Rate (°/100ft)	Toolface Azimuth (°)
5,300.00	5.73	295.31	5,279.98	173.10	-366.08	-132.57	0.00	0.00	0.00	0.00
5,400.00	5.73	295.31	5,379.48	177.36	-375.10	-135.84	0.00	0.00	0.00	0.00
5,500.00	5.73	295.31	5,478.98	181.63	-384.13	-139.11	0.00	0.00	0.00	0.00
5,600.00	5.73	295.31	5,578.48	185.90	-393.15	-142.38	0.00	0.00	0.00	0.00
5,700.00	5.73	295.31	5,677.98	190.16	-402.17	-145.65	0.00	0.00	0.00	0.00
5,800.00	5.73	295.31	5,777.48	194.43	-411.20	-148.91	0.00	0.00	0.00	0.00
5,900.00	5.73	295.31	5,876.98	198.70	-420.22	-152.18	0.00	0.00	0.00	0.00
6,000.00	5.73	295.31	5,976.48	202.96	-429.25	-155.45	0.00	0.00	0.00	0.00
6,100.00	5.73	295.31	6,075.98	207.23	-438.27	-158.72	0.00	0.00	0.00	0.00
6,200.00	5.73	295.31	6,175.48	211.50	-447.29	-161.99	0.00	0.00	0.00	0.00
6,300.00	5.73	295.31	6,274.98	215.76	-456.32	-165.25	0.00	0.00	0.00	0.00
6,400.00	5.73	295.31	6,374.49	220.03	-465.34	-168.52	0.00	0.00	0.00	0.00
6,500.00	5.73	295.31	6,473.99	224.30	-474.36	-171.79	0.00	0.00	0.00	0.00
6,600.00	5.73	295.31	6,573.49	228.56	-483.39	-175.06	0.00	0.00	0.00	0.00
6,700.00	5.73	295.31	6,672.99	232.83	-492.41	-178.33	0.00	0.00	0.00	0.00
6,800.00	5.73	295.31	6,772.49	237.10	-501.43	-181.59	0.00	0.00	0.00	0.00
6,900.00	5.73	295.31	6,871.99	241.36	-510.46	-184.86	0.00	0.00	0.00	0.00
7,000.00	5.73	295.31	6,971.49	245.63	-519.48	-188.13	0.00	0.00	0.00	0.00
7,100.00	5.73	295.31	7,070.99	249.90	-528.51	-191.40	0.00	0.00	0.00	0.00
7,154.06	5.73	295.31	7,124.78	252.20	-533.38	-193.16	0.00	0.00	0.00	0.00
Begin Build @ 7154.06ft										
7,200.00	5.59	247.36	7,170.52	252.32	-537.52	-192.83	10.00	-0.31	-104.37	-115.47
7,300.00	13.16	202.48	7,269.22	239.89	-546.39	-179.52	10.00	7.58	-44.87	-67.73
7,363.30	19.14	194.84	7,330.00	223.18	-551.81	-162.33	10.00	9.44	-12.08	-23.31
Sharon Springs										
7,382.46	20.99	193.37	7,348.00	216.81	-553.41	-155.81	10.00	9.65	-7.67	-15.95
Niobrara A										
7,400.00	22.69	192.22	7,364.28	210.45	-554.85	-149.33	10.00	9.70	-6.52	-14.57
7,500.00	32.49	187.89	7,452.80	164.87	-562.65	-103.19	10.00	9.80	-4.33	-13.51
Build Rate = 10.00/100ft										
7,525.49	35.01	187.15	7,474.00	150.83	-564.50	-89.03	10.00	9.87	-2.92	-9.66
Niobrara B										
7,600.00	42.38	185.42	7,532.11	104.56	-569.53	-42.49	10.00	9.89	-2.32	-9.04
7,655.13	47.85	184.42	7,571.00	65.66	-572.87	-3.45	10.00	9.92	-1.80	-7.68
Niobrara C										
7,700.00	52.30	183.73	7,599.79	31.35	-575.31	30.93	10.00	9.93	-1.53	-6.98
7,800.00	62.25	182.45	7,653.78	-52.55	-579.79	114.82	10.00	9.94	-1.28	-6.54
7,854.91	67.71	181.85	7,677.00	-102.26	-581.65	164.44	10.00	9.95	-1.10	-5.84
Fort Hays										
7,900.00	72.20	181.39	7,692.45	-144.59	-582.85	206.65	10.00	9.95	-1.02	-5.59
7,982.71	80.43	180.60	7,712.00	-224.87	-584.23	286.61	10.00	9.96	-0.96	-5.43
Codell										
8,000.00	82.16	180.44	7,714.62	-241.96	-584.39	303.62	10.00	9.96	-0.92	-5.24
8,078.29	89.95	179.73	7,720.00	-320.00	-584.50	381.21	10.00	9.96	-0.91	-5.22
End Build @ 8078.29ft - Codell TL - Heel - 7" Intermediate Casing - Howard 2C-33HZ_CP										
8,100.00	89.95	179.73	7,720.02	-341.71	-584.40	402.79	0.00	0.00	0.00	-5.17
8,200.00	89.95	179.73	7,720.10	-441.71	-583.93	502.15	0.00	0.00	0.00	0.00
8,300.00	89.95	179.73	7,720.18	-541.71	-583.45	601.52	0.00	0.00	0.00	0.00
8,400.00	89.95	179.73	7,720.27	-641.71	-582.98	700.88	0.00	0.00	0.00	0.00
8,500.00	89.95	179.73	7,720.35	-741.71	-582.51	800.24	0.00	0.00	0.00	0.00
8,600.00	89.95	179.73	7,720.43	-841.71	-582.04	899.61	0.00	0.00	0.00	0.00
8,700.00	89.95	179.73	7,720.51	-941.70	-581.57	998.97	0.00	0.00	0.00	0.00
8,800.00	89.95	179.73	7,720.59	-1,041.70	-581.10	1,098.33	0.00	0.00	0.00	0.00
8,900.00	89.95	179.73	7,720.68	-1,141.70	-580.62	1,197.70	0.00	0.00	0.00	0.00
9,000.00	89.95	179.73	7,720.76	-1,241.70	-580.15	1,297.06	0.00	0.00	0.00	0.00
9,100.00	89.95	179.73	7,720.84	-1,341.70	-579.68	1,396.43	0.00	0.00	0.00	0.00
9,200.00	89.95	179.73	7,720.92	-1,441.70	-579.21	1,495.79	0.00	0.00	0.00	0.00
9,300.00	89.95	179.73	7,721.01	-1,541.70	-578.74	1,595.15	0.00	0.00	0.00	0.00
9,400.00	89.95	179.73	7,721.09	-1,641.70	-578.27	1,694.52	0.00	0.00	0.00	0.00

Plan Report for Howard 2C-33HZ - Plan A Rev 0 Permit

Measured Depth (ft)	Inclination (°)	Azimuth (°)	Vertical Depth (ft)	+N/-S (ft)	+E/-W (ft)	Vertical Section (ft)	Dogleg Rate (°/100ft)	Build Rate (°/100ft)	Turn Rate (°/100ft)	Toolface Azimuth (°)
9,500.00	89.95	179.73	7,721.17	-1,741.70	-577.79	1,793.88	0.00	0.00	0.00	0.00
9,600.00	89.95	179.73	7,721.25	-1,841.69	-577.32	1,893.25	0.00	0.00	0.00	0.00
9,700.00	89.95	179.73	7,721.34	-1,941.69	-576.85	1,992.61	0.00	0.00	0.00	0.00
9,800.00	89.95	179.73	7,721.42	-2,041.69	-576.38	2,091.97	0.00	0.00	0.00	0.00
9,900.00	89.95	179.73	7,721.50	-2,141.69	-575.91	2,191.34	0.00	0.00	0.00	0.00
10,000.00	89.95	179.73	7,721.58	-2,241.69	-575.44	2,290.70	0.00	0.00	0.00	0.00
10,100.00	89.95	179.73	7,721.67	-2,341.69	-574.97	2,390.06	0.00	0.00	0.00	0.00
10,200.00	89.95	179.73	7,721.75	-2,441.69	-574.49	2,489.43	0.00	0.00	0.00	0.00
10,300.00	89.95	179.73	7,721.83	-2,541.69	-574.02	2,588.79	0.00	0.00	0.00	0.00
10,400.00	89.95	179.73	7,721.91	-2,641.69	-573.55	2,688.16	0.00	0.00	0.00	0.00
10,500.00	89.95	179.73	7,722.00	-2,741.68	-573.08	2,787.52	0.00	0.00	0.00	0.00
10,600.00	89.95	179.73	7,722.08	-2,841.68	-572.61	2,886.88	0.00	0.00	0.00	0.00
10,700.00	89.95	179.73	7,722.16	-2,941.68	-572.14	2,986.25	0.00	0.00	0.00	0.00
10,800.00	89.95	179.73	7,722.24	-3,041.68	-571.66	3,085.61	0.00	0.00	0.00	0.00
10,900.00	89.95	179.73	7,722.33	-3,141.68	-571.19	3,184.98	0.00	0.00	0.00	0.00
11,000.00	89.95	179.73	7,722.41	-3,241.68	-570.72	3,284.34	0.00	0.00	0.00	0.00
11,100.00	89.95	179.73	7,722.49	-3,341.68	-570.25	3,383.70	0.00	0.00	0.00	0.00
11,200.00	89.95	179.73	7,722.57	-3,441.68	-569.78	3,483.07	0.00	0.00	0.00	0.00
11,300.00	89.95	179.73	7,722.66	-3,541.68	-569.31	3,582.43	0.00	0.00	0.00	0.00
11,400.00	89.95	179.73	7,722.74	-3,641.67	-568.83	3,681.79	0.00	0.00	0.00	0.00
11,500.00	89.95	179.73	7,722.82	-3,741.67	-568.36	3,781.16	0.00	0.00	0.00	0.00
11,600.00	89.95	179.73	7,722.90	-3,841.67	-567.89	3,880.52	0.00	0.00	0.00	0.00
11,700.00	89.95	179.73	7,722.98	-3,941.67	-567.42	3,979.89	0.00	0.00	0.00	0.00
11,800.00	89.95	179.73	7,723.07	-4,041.67	-566.95	4,079.25	0.00	0.00	0.00	0.00
11,900.00	89.95	179.73	7,723.15	-4,141.67	-566.48	4,178.61	0.00	0.00	0.00	0.00
12,000.00	89.95	179.73	7,723.23	-4,241.67	-566.00	4,277.98	0.00	0.00	0.00	0.00
12,100.00	89.95	179.73	7,723.31	-4,341.67	-565.53	4,377.34	0.00	0.00	0.00	0.00
12,200.00	89.95	179.73	7,723.40	-4,441.66	-565.06	4,476.71	0.00	0.00	0.00	0.00
12,300.00	89.95	179.73	7,723.48	-4,541.66	-564.59	4,576.07	0.00	0.00	0.00	0.00
12,400.00	89.95	179.73	7,723.56	-4,641.66	-564.12	4,675.43	0.00	0.00	0.00	0.00
12,500.00	89.95	179.73	7,723.64	-4,741.66	-563.65	4,774.80	0.00	0.00	0.00	0.00
12,600.00	89.95	179.73	7,723.73	-4,841.66	-563.17	4,874.16	0.00	0.00	0.00	0.00
12,700.00	89.95	179.73	7,723.81	-4,941.66	-562.70	4,973.52	0.00	0.00	0.00	0.00
12,800.00	89.95	179.73	7,723.89	-5,041.66	-562.23	5,072.89	0.00	0.00	0.00	0.00
12,900.00	89.95	179.73	7,723.97	-5,141.66	-561.76	5,172.25	0.00	0.00	0.00	0.00
12,931.59	89.95	179.73	7,724.00	-5,173.24	-561.61	5,203.64	0.00	0.00	0.00	0.00

Codell TL - Toe - Howard 2C-33HZ_BHL

Plan Annotations

Measured Depth (ft)	Vertical Depth (ft)	Local Coordinates		Comment
		+N/-S (ft)	+E/-W (ft)	
1,100.00	1,100.00	0.00	0.00	Begin Nudge @ 1100.00ft
1,386.43	1,385.95	6.12	-12.93	End Nudge @ 1386.43ft
7,154.06	7,124.78	252.20	-533.38	Begin Build @ 7154.06ft
7,500.00	7,452.80	164.87	-562.65	Build Rate = 10.00/100ft
8,078.29	7,720.00	-320.00	-584.50	End Build @ 8078.29ft
12,931.59	7,724.00	-5,173.25	-561.61	Total Depth @ 12931.59ft

Vertical Section Information

Angle Type	Target	Azimuth (°)	Origin Type	Origin		Start TVD (ft)
				+N/-S (ft)	+E/-W (ft)	
Target	Howard 2C-33HZ_BHL	186.20	Slot	0.00	0.00	7,724.00

Plan Report for Howard 2C-33HZ - Plan A Rev 0 Permit

Survey tool program

From (ft)	To (ft)	Survey/Plan	Survey Tool
0.00	12,931.59	Plan A Rev 0 Permit	MWD

Casing Details

Measured Depth (ft)	Vertical Depth (ft)	Name	Casing Diameter (")	Hole Diameter (")
8,078.29	7,720.00	7" Intermediate Casing	7	8-3/4

Formation Details

Measured Depth (ft)	Vertical Depth (ft)	Name	Lithology	Dip (°)	Dip Direction (°)
4,797.51	4,780.00	Sussex		0.00	
7,363.30	7,330.00	Sharon Springs		0.00	
7,382.46	7,348.00	Niobrara A		0.00	
7,525.49	7,474.00	Niobrara B		0.00	
7,655.13	7,571.00	Niobrara C		0.00	
7,854.91	7,677.00	Fort Hays		0.00	
7,982.71	7,712.00	Codell		0.00	
8,078.29	7,720.00	Codell TL - Heel		0.00	
12,931.59	7,724.00	Codell TL - Toe		0.00	

Targets associated with this wellbore

Target Name	TVD (ft)	+N/-S (ft)	+E/-W (ft)	Shape
Howard 2C-33HZ_BHL	7,724.00	-5,173.24	-561.61	Point
Howard 2C-33HZ_SHL	0.00	0.00	0.00	Point
Howard 2C-33HZ_CP	7,720.00	-320.00	-584.50	Point

North Reference Sheet for Sec. 28-T1N-R67W - Howard 2C-33HZ - Plan A Rev 0

All data is in US Feet unless otherwise stated. Directions and Coordinates are relative to True North Reference.

Vertical Depths are relative to RKB=17 @ 5000.00ft (Drilling Rig). Northing and Easting are relative to Howard 2C-33HZ

Coordinate System is US State Plane 1983, Colorado Northern Zone using datum North American Datum 1983, ellipsoid GRS 1980

Projection method is Lambert Conformal Conic (2 parallel)

Central Meridian is -105.50°, Longitude Origin:0.000000°, Latitude Origin:40.783333°

False Easting: 3,000,000.00ft, False Northing: 1,000,000.00ft, Scale Reduction: 0.99996433

Grid Coordinates of Well: 1,253,805.64 ft N, 3,170,662.77 ft E

Geographical Coordinates of Well: 40° 01' 42.51" N, 104° 53' 26.03" W

Grid Convergence at Surface is: 0.39°

Based upon Minimum Curvature type calculations, at a Measured Depth of 12,931.59ft
the Bottom Hole Displacement is 5,203.64ft in the Direction of 186.20° (True).

Magnetic Convergence at surface is: -8.35° (12 December 2012, , BGGM2012)

