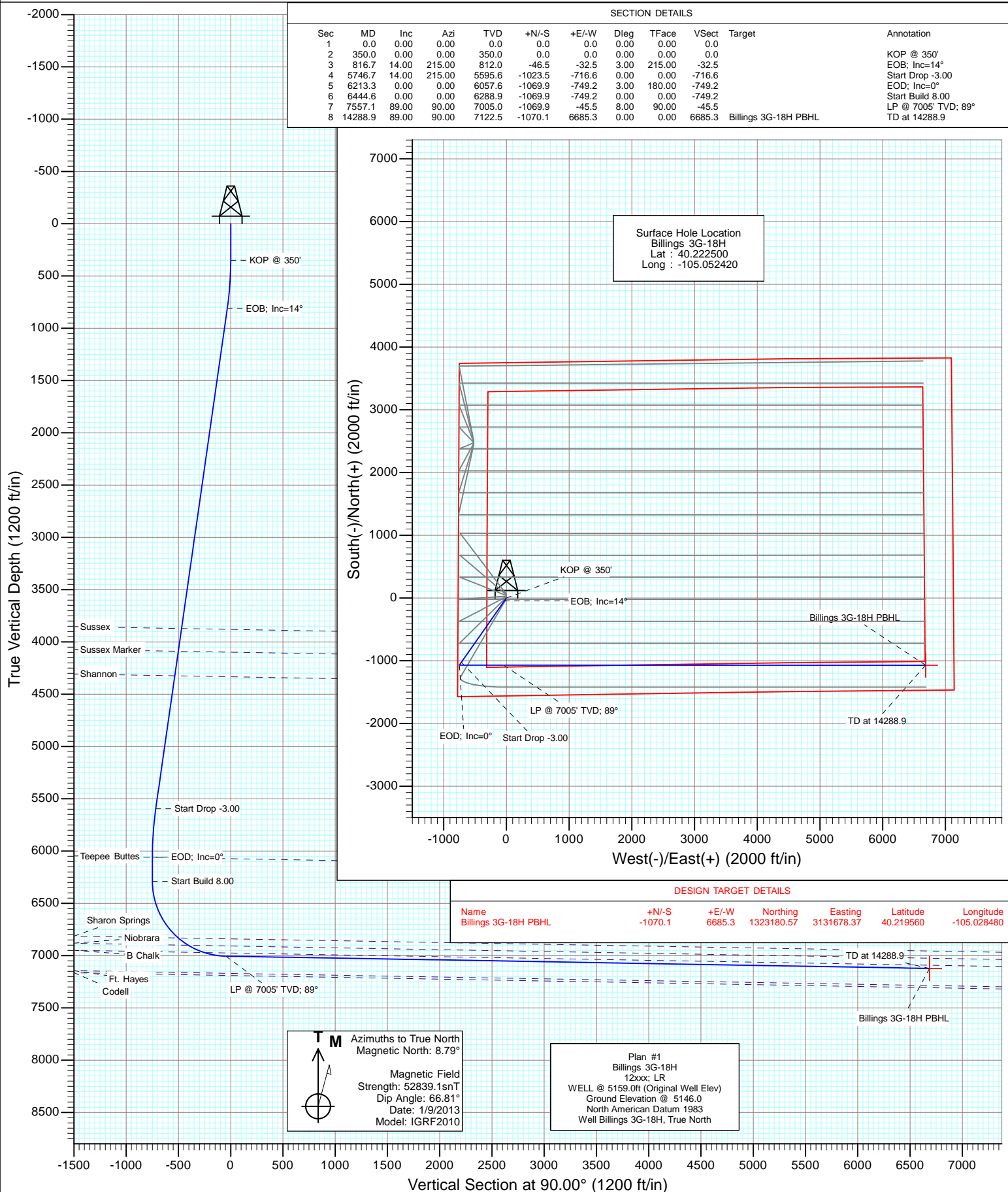




Project: DJ Wattenberg  
Site: S18-T3N-R68W (Billings)  
Well: Billings 3G-18H  
Wellbore: Hz  
Design: Plan #1



## Planning Report

<b>Database:</b>	USA EDM 5000 Multi Users DB	<b>Local Co-ordinate Reference:</b>	Well Billings 3G-18H
<b>Company:</b>	EnCana Oil & Gas (USA) Inc	<b>TVD Reference:</b>	WELL @ 5159.0ft (Original Well Elev)
<b>Project:</b>	DJ Wattenberg	<b>MD Reference:</b>	WELL @ 5159.0ft (Original Well Elev)
<b>Site:</b>	S18-T3N-R68W (Billings)	<b>North Reference:</b>	True
<b>Well:</b>	Billings 3G-18H	<b>Survey Calculation Method:</b>	Minimum Curvature
<b>Wellbore:</b>	Hz		
<b>Design:</b>	Plan #1		

<b>Project</b>	DJ Wattenberg		
<b>Map System:</b>	US State Plane 1983	<b>System Datum:</b>	Mean Sea Level
<b>Geo Datum:</b>	North American Datum 1983		
<b>Map Zone:</b>	Colorado Northern Zone		

Site		S18-T3N-R68W (Billings)			
Site Position:		Northing:	1,326,724.18 ft	Latitude:	40.229390
From:	Lat/Long	Easting:	3,124,452.97 ft	Longitude:	-105.054290
Position Uncertainty:	0.0 ft	Slot Radius:	13.200 in	Grid Convergence:	0.29 °

Well	Billings 3G-18H					
Well Position	+N-S	0.0 ft	Northing:	1,324,216.91 ft	Latitude:	40.222500
	+E-W	0.0 ft	Easting:	3,124,987.76 ft	Longitude:	-105.052420
Position Uncertainty		0.0 ft	Wellhead Elevation:	ft	Ground Level:	5,146.0 ft

<b>Wellbore</b>	Hz				
<b>Magnetics</b>	<b>Model Name</b>	<b>Sample Date</b>	<b>Declination (°)</b>	<b>Dip Angle (°)</b>	<b>Field Strength (nT)</b>
	IGRF2010	1/9/2013	8.79	66.81	52,839

<b>Design</b>	Plan #1			
<b>Audit Notes:</b>				
<b>Version:</b>	<b>Phase:</b>	PLAN	<b>Tie On Depth:</b>	0.0
<b>Vertical Section:</b>	<b>Depth From (TVD) (ft)</b>	<b>+N/-S (ft)</b>	<b>+E/-W (ft)</b>	<b>Direction (°)</b>
	0.0	0.0	0.0	90.00

<b>Plan Sections</b>										
Measured Depth (ft)	Inclination (°)	Azimuth (°)	Vertical Depth (ft)	+N/-S (ft)	+E/-W (ft)	Dogleg Rate (°/100ft)	Build Rate (°/100ft)	Turn Rate (°/100ft)	TFO (°)	Target
0.0	0.00	0.00	0.0	0.0	0.0	0.00	0.00	0.00	0.00	
350.0	0.00	0.00	350.0	0.0	0.0	0.00	0.00	0.00	0.00	
816.7	14.00	215.00	812.0	-46.5	-32.5	3.00	3.00	0.00	215.00	
5,746.7	14.00	215.00	5,595.6	-1,023.5	-716.6	0.00	0.00	0.00	0.00	
6,213.3	0.00	0.00	6,057.6	-1,069.9	-749.2	3.00	-3.00	0.00	180.00	
6,444.6	0.00	0.00	6,288.9	-1,069.9	-749.2	0.00	0.00	0.00	0.00	
7,557.1	89.00	90.00	7,005.0	-1,069.9	-45.5	8.00	8.00	0.00	90.00	
14,288.9	89.00	90.00	7,122.5	-1,070.1	6,685.3	0.00	0.00	0.00	0.00	Billings 3G-18H PBHL

# Planning Report

<b>Database:</b>	USA EDM 5000 Multi Users DB	<b>Local Co-ordinate Reference:</b>	Well Billings 3G-18H
<b>Company:</b>	EnCana Oil & Gas (USA) Inc	<b>TVD Reference:</b>	WELL @ 5159.0ft (Original Well Elev)
<b>Project:</b>	DJ Wattenberg	<b>MD Reference:</b>	WELL @ 5159.0ft (Original Well Elev)
<b>Site:</b>	S18-T3N-R68W (Billings)	<b>North Reference:</b>	True
<b>Well:</b>	Billings 3G-18H	<b>Survey Calculation Method:</b>	Minimum Curvature
<b>Wellbore:</b>	Hz		
<b>Design:</b>	Plan #1		

## Planned Survey

Measured Depth (ft)	Inclination (°)	Azimuth (°)	Vertical Depth (ft)	+N/-S (ft)	+E/-W (ft)	Vertical Section (ft)	Dogleg Rate (°/100ft)	Build Rate (°/100ft)	Comments / Formations
0.0	0.00	0.00	0.0	0.0	0.0	0.0	0.00	0.00	
100.0	0.00	0.00	100.0	0.0	0.0	0.0	0.00	0.00	
200.0	0.00	0.00	200.0	0.0	0.0	0.0	0.00	0.00	
300.0	0.00	0.00	300.0	0.0	0.0	0.0	0.00	0.00	
350.0	0.00	0.00	350.0	0.0	0.0	0.0	0.00	0.00	KOP @ 350'
400.0	1.50	215.00	400.0	-0.5	-0.4	-0.4	3.00	3.00	
500.0	4.50	215.00	499.8	-4.8	-3.4	-3.4	3.00	3.00	
600.0	7.50	215.00	599.3	-13.4	-9.4	-9.4	3.00	3.00	
700.0	10.50	215.00	698.0	-26.2	-18.3	-18.3	3.00	3.00	
800.0	13.50	215.00	795.8	-43.2	-30.3	-30.3	3.00	3.00	
816.7	14.00	215.00	812.0	-46.5	-32.5	-32.5	3.00	3.00	EOB; Inc=14°
900.0	14.00	215.00	892.9	-63.0	-44.1	-44.1	0.00	0.00	
1,000.0	14.00	215.00	989.9	-82.8	-58.0	-58.0	0.00	0.00	
1,100.0	14.00	215.00	1,087.0	-102.6	-71.9	-71.9	0.00	0.00	
1,200.0	14.00	215.00	1,184.0	-122.4	-85.7	-85.7	0.00	0.00	
1,300.0	14.00	215.00	1,281.0	-142.3	-99.6	-99.6	0.00	0.00	
1,400.0	14.00	215.00	1,378.0	-162.1	-113.5	-113.5	0.00	0.00	
1,500.0	14.00	215.00	1,475.1	-181.9	-127.4	-127.4	0.00	0.00	
1,600.0	14.00	215.00	1,572.1	-201.7	-141.2	-141.2	0.00	0.00	
1,700.0	14.00	215.00	1,669.1	-221.5	-155.1	-155.1	0.00	0.00	
1,800.0	14.00	215.00	1,766.2	-241.3	-169.0	-169.0	0.00	0.00	
1,900.0	14.00	215.00	1,863.2	-261.2	-182.9	-182.9	0.00	0.00	
2,000.0	14.00	215.00	1,960.2	-281.0	-196.7	-196.7	0.00	0.00	
2,100.0	14.00	215.00	2,057.2	-300.8	-210.6	-210.6	0.00	0.00	
2,200.0	14.00	215.00	2,154.3	-320.6	-224.5	-224.5	0.00	0.00	
2,300.0	14.00	215.00	2,251.3	-340.4	-238.4	-238.4	0.00	0.00	
2,400.0	14.00	215.00	2,348.3	-360.2	-252.2	-252.2	0.00	0.00	
2,500.0	14.00	215.00	2,445.4	-380.1	-266.1	-266.1	0.00	0.00	
2,600.0	14.00	215.00	2,542.4	-399.9	-280.0	-280.0	0.00	0.00	
2,700.0	14.00	215.00	2,639.4	-419.7	-293.9	-293.9	0.00	0.00	
2,800.0	14.00	215.00	2,736.5	-439.5	-307.7	-307.7	0.00	0.00	
2,900.0	14.00	215.00	2,833.5	-459.3	-321.6	-321.6	0.00	0.00	
3,000.0	14.00	215.00	2,930.5	-479.1	-335.5	-335.5	0.00	0.00	
3,100.0	14.00	215.00	3,027.5	-499.0	-349.4	-349.4	0.00	0.00	
3,200.0	14.00	215.00	3,124.6	-518.8	-363.3	-363.3	0.00	0.00	
3,300.0	14.00	215.00	3,221.6	-538.6	-377.1	-377.1	0.00	0.00	
3,400.0	14.00	215.00	3,318.6	-558.4	-391.0	-391.0	0.00	0.00	
3,500.0	14.00	215.00	3,415.7	-578.2	-404.9	-404.9	0.00	0.00	
3,600.0	14.00	215.00	3,512.7	-598.0	-418.8	-418.8	0.00	0.00	
3,700.0	14.00	215.00	3,609.7	-617.9	-432.6	-432.6	0.00	0.00	
3,800.0	14.00	215.00	3,706.8	-637.7	-446.5	-446.5	0.00	0.00	
3,900.0	14.00	215.00	3,803.8	-657.5	-460.4	-460.4	0.00	0.00	
3,970.1	14.00	215.00	3,871.8	-671.4	-470.1	-470.1	0.00	0.00	Sussex
4,000.0	14.00	215.00	3,900.8	-677.3	-474.3	-474.3	0.00	0.00	
4,100.0	14.00	215.00	3,997.8	-697.1	-488.1	-488.1	0.00	0.00	
4,193.2	14.00	215.00	4,088.3	-715.6	-501.1	-501.1	0.00	0.00	Sussex Marker
4,200.0	14.00	215.00	4,094.9	-716.9	-502.0	-502.0	0.00	0.00	
4,300.0	14.00	215.00	4,191.9	-736.8	-515.9	-515.9	0.00	0.00	
4,400.0	14.00	215.00	4,288.9	-756.6	-529.8	-529.8	0.00	0.00	
4,435.8	14.00	215.00	4,323.7	-763.7	-534.7	-534.7	0.00	0.00	Shannon
4,500.0	14.00	215.00	4,386.0	-776.4	-543.6	-543.6	0.00	0.00	
4,600.0	14.00	215.00	4,483.0	-796.2	-557.5	-557.5	0.00	0.00	

# Planning Report

<b>Database:</b>	USA EDM 5000 Multi Users DB	<b>Local Co-ordinate Reference:</b>	Well Billings 3G-18H
<b>Company:</b>	EnCana Oil & Gas (USA) Inc	<b>TVD Reference:</b>	WELL @ 5159.0ft (Original Well Elev)
<b>Project:</b>	DJ Wattenberg	<b>MD Reference:</b>	WELL @ 5159.0ft (Original Well Elev)
<b>Site:</b>	S18-T3N-R68W (Billings)	<b>North Reference:</b>	True
<b>Well:</b>	Billings 3G-18H	<b>Survey Calculation Method:</b>	Minimum Curvature
<b>Wellbore:</b>	Hz		
<b>Design:</b>	Plan #1		

Planned Survey									
Measured Depth (ft)	Inclination (°)	Azimuth (°)	Vertical Depth (ft)	+N/-S (ft)	+E/-W (ft)	Vertical Section (ft)	Dogleg Rate (°/100ft)	Build Rate (°/100ft)	Comments / Formations
4,700.0	14.00	215.00	4,580.0	-816.0	-571.4	-571.4	0.00	0.00	
4,800.0	14.00	215.00	4,677.0	-835.9	-585.3	-585.3	0.00	0.00	
4,900.0	14.00	215.00	4,774.1	-855.7	-599.1	-599.1	0.00	0.00	
5,000.0	14.00	215.00	4,871.1	-875.5	-613.0	-613.0	0.00	0.00	
5,100.0	14.00	215.00	4,968.1	-895.3	-626.9	-626.9	0.00	0.00	
5,200.0	14.00	215.00	5,065.2	-915.1	-640.8	-640.8	0.00	0.00	
5,300.0	14.00	215.00	5,162.2	-934.9	-654.7	-654.7	0.00	0.00	
5,400.0	14.00	215.00	5,259.2	-954.8	-668.5	-668.5	0.00	0.00	
5,500.0	14.00	215.00	5,356.3	-974.6	-682.4	-682.4	0.00	0.00	
5,600.0	14.00	215.00	5,453.3	-994.4	-696.3	-696.3	0.00	0.00	
5,700.0	14.00	215.00	5,550.3	-1,014.2	-710.2	-710.2	0.00	0.00	
5,746.7	14.00	215.00	5,595.6	-1,023.5	-716.6	-716.6	0.00	0.00	Start Drop -3.00
5,800.0	12.40	215.00	5,647.5	-1,033.4	-723.6	-723.6	3.00	-3.00	
5,900.0	9.40	215.00	5,745.7	-1,048.9	-734.5	-734.5	3.00	-3.00	
6,000.0	6.40	215.00	5,844.7	-1,060.2	-742.3	-742.3	3.00	-3.00	
6,100.0	3.40	215.00	5,944.4	-1,067.2	-747.2	-747.2	3.00	-3.00	
6,200.0	0.40	215.00	6,044.3	-1,069.9	-749.1	-749.1	3.00	-3.00	
6,213.3	0.00	0.00	6,057.6	-1,069.9	-749.2	-749.2	3.00	-3.00	EOD; Inc=0°
6,215.6	0.00	0.00	6,059.9	-1,069.9	-749.2	-749.2	0.00	0.00	Teepee Buttes
6,300.0	0.00	0.00	6,144.3	-1,069.9	-749.2	-749.2	0.00	0.00	
6,400.0	0.00	0.00	6,244.3	-1,069.9	-749.2	-749.2	0.00	0.00	
6,444.6	0.00	0.00	6,288.9	-1,069.9	-749.2	-749.2	0.00	0.00	Start Build 8.00
6,500.0	4.43	90.00	6,344.2	-1,069.9	-747.0	-747.0	8.00	8.00	
6,600.0	12.43	90.00	6,443.1	-1,069.9	-732.4	-732.4	8.00	8.00	
6,700.0	20.43	90.00	6,538.9	-1,069.9	-704.1	-704.1	8.00	8.00	
6,800.0	28.43	90.00	6,629.9	-1,069.9	-662.8	-662.8	8.00	8.00	
6,900.0	36.43	90.00	6,714.2	-1,069.9	-609.2	-609.2	8.00	8.00	
7,000.0	44.43	90.00	6,790.3	-1,069.9	-544.4	-544.4	8.00	8.00	
7,058.3	49.10	90.00	6,830.2	-1,069.9	-501.9	-501.9	8.00	8.00	Sharon Springs
7,100.0	52.43	90.00	6,856.6	-1,069.9	-469.7	-469.7	8.00	8.00	
7,178.5	58.71	90.00	6,900.9	-1,069.9	-405.0	-405.0	8.00	8.00	Niobrara
7,200.0	60.43	90.00	6,911.8	-1,069.9	-386.4	-386.4	8.00	8.00	
7,300.0	68.43	90.00	6,955.0	-1,069.9	-296.3	-296.3	8.00	8.00	
7,346.3	72.13	90.00	6,970.6	-1,069.9	-252.7	-252.7	8.00	8.00	B Chalk
7,400.0	76.43	90.00	6,985.1	-1,069.9	-201.0	-201.0	8.00	8.00	
7,500.0	84.43	90.00	7,001.7	-1,069.9	-102.5	-102.5	8.00	8.00	
7,557.1	89.00	90.00	7,005.0	-1,069.9	-45.5	-45.5	8.00	8.00	LP @ 7005' TVD; 89°
7,600.0	89.00	90.00	7,005.8	-1,069.9	-2.6	-2.6	0.00	0.00	
7,700.0	89.00	90.00	7,007.5	-1,069.9	97.4	97.4	0.00	0.00	
7,800.0	89.00	90.00	7,009.3	-1,069.9	197.4	197.4	0.00	0.00	
7,900.0	89.00	90.00	7,011.0	-1,069.9	297.3	297.3	0.00	0.00	
8,000.0	89.00	90.00	7,012.7	-1,069.9	397.3	397.3	0.00	0.00	
8,100.0	89.00	90.00	7,014.5	-1,070.0	497.3	497.3	0.00	0.00	
8,200.0	89.00	90.00	7,016.2	-1,070.0	597.3	597.3	0.00	0.00	
8,300.0	89.00	90.00	7,018.0	-1,070.0	697.3	697.3	0.00	0.00	
8,400.0	89.00	90.00	7,019.7	-1,070.0	797.3	797.3	0.00	0.00	
8,500.0	89.00	90.00	7,021.5	-1,070.0	897.3	897.3	0.00	0.00	
8,600.0	89.00	90.00	7,023.2	-1,070.0	997.2	997.2	0.00	0.00	
8,700.0	89.00	90.00	7,025.0	-1,070.0	1,097.2	1,097.2	0.00	0.00	
8,800.0	89.00	90.00	7,026.7	-1,070.0	1,197.2	1,197.2	0.00	0.00	
8,900.0	89.00	90.00	7,028.5	-1,070.0	1,297.2	1,297.2	0.00	0.00	
9,000.0	89.00	90.00	7,030.2	-1,070.0	1,397.2	1,397.2	0.00	0.00	

# Planning Report

<b>Database:</b>	USA EDM 5000 Multi Users DB	<b>Local Co-ordinate Reference:</b>	Well Billings 3G-18H
<b>Company:</b>	EnCana Oil & Gas (USA) Inc	<b>TVD Reference:</b>	WELL @ 5159.0ft (Original Well Elev)
<b>Project:</b>	DJ Wattenberg	<b>MD Reference:</b>	WELL @ 5159.0ft (Original Well Elev)
<b>Site:</b>	S18-T3N-R68W (Billings)	<b>North Reference:</b>	True
<b>Well:</b>	Billings 3G-18H	<b>Survey Calculation Method:</b>	Minimum Curvature
<b>Wellbore:</b>	Hz		
<b>Design:</b>	Plan #1		

Planned Survey									
Measured Depth (ft)	Inclination (°)	Azimuth (°)	Vertical Depth (ft)	+N/-S (ft)	+E/-W (ft)	Vertical Section (ft)	Dogleg Rate (°/100ft)	Build Rate (°/100ft)	Comments / Formations
9,100.0	89.00	90.00	7,031.9	-1,070.0	1,497.2	1,497.2	0.00	0.00	
9,200.0	89.00	90.00	7,033.7	-1,070.0	1,597.2	1,597.2	0.00	0.00	
9,300.0	89.00	90.00	7,035.4	-1,070.0	1,697.1	1,697.1	0.00	0.00	
9,400.0	89.00	90.00	7,037.2	-1,070.0	1,797.1	1,797.1	0.00	0.00	
9,500.0	89.00	90.00	7,038.9	-1,070.0	1,897.1	1,897.1	0.00	0.00	
9,600.0	89.00	90.00	7,040.7	-1,070.0	1,997.1	1,997.1	0.00	0.00	
9,700.0	89.00	90.00	7,042.4	-1,070.0	2,097.1	2,097.1	0.00	0.00	
9,800.0	89.00	90.00	7,044.2	-1,070.0	2,197.1	2,197.1	0.00	0.00	
9,900.0	89.00	90.00	7,045.9	-1,070.0	2,297.0	2,297.0	0.00	0.00	
10,000.0	89.00	90.00	7,047.6	-1,070.0	2,397.0	2,397.0	0.00	0.00	
10,100.0	89.00	90.00	7,049.4	-1,070.0	2,497.0	2,497.0	0.00	0.00	
10,200.0	89.00	90.00	7,051.1	-1,070.0	2,597.0	2,597.0	0.00	0.00	
10,300.0	89.00	90.00	7,052.9	-1,070.0	2,697.0	2,697.0	0.00	0.00	
10,400.0	89.00	90.00	7,054.6	-1,070.0	2,797.0	2,797.0	0.00	0.00	
10,500.0	89.00	90.00	7,056.4	-1,070.0	2,897.0	2,897.0	0.00	0.00	
10,600.0	89.00	90.00	7,058.1	-1,070.0	2,996.9	2,996.9	0.00	0.00	
10,700.0	89.00	90.00	7,059.9	-1,070.0	3,096.9	3,096.9	0.00	0.00	
10,800.0	89.00	90.00	7,061.6	-1,070.0	3,196.9	3,196.9	0.00	0.00	
10,900.0	89.00	90.00	7,063.4	-1,070.0	3,296.9	3,296.9	0.00	0.00	
11,000.0	89.00	90.00	7,065.1	-1,070.0	3,396.9	3,396.9	0.00	0.00	
11,100.0	89.00	90.00	7,066.8	-1,070.0	3,496.9	3,496.9	0.00	0.00	
11,200.0	89.00	90.00	7,068.6	-1,070.0	3,596.8	3,596.8	0.00	0.00	
11,300.0	89.00	90.00	7,070.3	-1,070.0	3,696.8	3,696.8	0.00	0.00	
11,400.0	89.00	90.00	7,072.1	-1,070.0	3,796.8	3,796.8	0.00	0.00	
11,500.0	89.00	90.00	7,073.8	-1,070.0	3,896.8	3,896.8	0.00	0.00	
11,600.0	89.00	90.00	7,075.6	-1,070.0	3,996.8	3,996.8	0.00	0.00	
11,700.0	89.00	90.00	7,077.3	-1,070.0	4,096.8	4,096.8	0.00	0.00	
11,800.0	89.00	90.00	7,079.1	-1,070.0	4,196.8	4,196.8	0.00	0.00	
11,900.0	89.00	90.00	7,080.8	-1,070.0	4,296.7	4,296.7	0.00	0.00	
12,000.0	89.00	90.00	7,082.6	-1,070.0	4,396.7	4,396.7	0.00	0.00	
12,100.0	89.00	90.00	7,084.3	-1,070.0	4,496.7	4,496.7	0.00	0.00	
12,200.0	89.00	90.00	7,086.0	-1,070.0	4,596.7	4,596.7	0.00	0.00	
12,300.0	89.00	90.00	7,087.8	-1,070.0	4,696.7	4,696.7	0.00	0.00	
12,400.0	89.00	90.00	7,089.5	-1,070.0	4,796.7	4,796.7	0.00	0.00	
12,500.0	89.00	90.00	7,091.3	-1,070.0	4,896.6	4,896.6	0.00	0.00	
12,600.0	89.00	90.00	7,093.0	-1,070.1	4,996.6	4,996.6	0.00	0.00	
12,700.0	89.00	90.00	7,094.8	-1,070.1	5,096.6	5,096.6	0.00	0.00	
12,800.0	89.00	90.00	7,096.5	-1,070.1	5,196.6	5,196.6	0.00	0.00	
12,900.0	89.00	90.00	7,098.3	-1,070.1	5,296.6	5,296.6	0.00	0.00	
13,000.0	89.00	90.00	7,100.0	-1,070.1	5,396.6	5,396.6	0.00	0.00	
13,100.0	89.00	90.00	7,101.8	-1,070.1	5,496.6	5,496.6	0.00	0.00	
13,200.0	89.00	90.00	7,103.5	-1,070.1	5,596.5	5,596.5	0.00	0.00	
13,300.0	89.00	90.00	7,105.2	-1,070.1	5,696.5	5,696.5	0.00	0.00	
13,400.0	89.00	90.00	7,107.0	-1,070.1	5,796.5	5,796.5	0.00	0.00	
13,500.0	89.00	90.00	7,108.7	-1,070.1	5,896.5	5,896.5	0.00	0.00	
13,600.0	89.00	90.00	7,110.5	-1,070.1	5,996.5	5,996.5	0.00	0.00	
13,700.0	89.00	90.00	7,112.2	-1,070.1	6,096.5	6,096.5	0.00	0.00	
13,800.0	89.00	90.00	7,114.0	-1,070.1	6,196.5	6,196.5	0.00	0.00	
13,900.0	89.00	90.00	7,115.7	-1,070.1	6,296.4	6,296.4	0.00	0.00	
14,000.0	89.00	90.00	7,117.5	-1,070.1	6,396.4	6,396.4	0.00	0.00	
14,100.0	89.00	90.00	7,119.2	-1,070.1	6,496.4	6,496.4	0.00	0.00	
14,200.0	89.00	90.00	7,120.9	-1,070.1	6,596.4	6,596.4	0.00	0.00	

## Planning Report

<b>Database:</b>	USA EDM 5000 Multi Users DB	<b>Local Co-ordinate Reference:</b>	Well Billings 3G-18H
<b>Company:</b>	EnCana Oil & Gas (USA) Inc	<b>TVD Reference:</b>	WELL @ 5159.0ft (Original Well Elev)
<b>Project:</b>	DJ Wattenberg	<b>MD Reference:</b>	WELL @ 5159.0ft (Original Well Elev)
<b>Site:</b>	S18-T3N-R68W (Billings)	<b>North Reference:</b>	True
<b>Well:</b>	Billings 3G-18H	<b>Survey Calculation Method:</b>	Minimum Curvature
<b>Wellbore:</b>	Hz		
<b>Design:</b>	Plan #1		

### Planned Survey

Measured Depth (ft)	Inclination (°)	Azimuth (°)	Vertical Depth (ft)	+N/-S (ft)	+E/-W (ft)	Vertical Section (ft)	Dogleg Rate (°/100ft)	Build Rate (°/100ft)	Comments / Formations
14,288.9	89.00	90.00	7,122.5	-1,070.1	6,685.3	6,685.3	0.00	0.00	TD at 14288.9 - Billings 3G-18H PBHL

### Targets

Target Name - hit/miss target - Shape	Dip Angle (°)	Dip Dir. (°)	TVD (ft)	+N/-S (ft)	+E/-W (ft)	Northing (ft)	Easting (ft)	Latitude	Longitude
Billings 3G-18H PBHL - plan hits target center - Point	0.00	0.00	7,122.5	-1,070.1	6,685.3	1,323,180.57	3,131,678.37	40.219560	-105.028480

### Formations

Measured Depth (ft)	Vertical Depth (ft)	Name	Lithology	Dip (°)	Dip Direction (°)
3,970.1	3,880.0	Sussex		1.00	90.00
4,193.2	4,097.0	Sussex Marker		1.00	90.00
4,435.8	4,333.0	Shannon		1.00	90.00
6,215.6	6,073.0	Teepee Buttes		1.00	90.00
7,058.3	6,839.0	Sharon Springs		1.00	90.00
7,178.5	6,908.0	Niobrara		1.00	90.00
7,346.3	6,975.0	B Chalk		1.00	90.00

### Plan Annotations

Measured Depth (ft)	Vertical Depth (ft)	Local Coordinates		Comment
		+N/-S (ft)	+E/-W (ft)	
350.0	350.0	0.0	0.0	KOP @ 350'
816.7	812.0	-46.5	-32.5	EOB; Inc=14°
5,746.7	5,595.6	-1,023.5	-716.6	Start Drop -3.00
6,213.3	6,057.6	-1,069.9	-749.2	EOD; Inc=0°
6,444.6	6,288.9	-1,069.9	-749.2	Start Build 8.00
7,557.1	7,005.0	-1,069.9	-45.5	LP @ 7005' TVD; 89°
14,288.9	7,122.5	-1,070.1	6,685.3	TD at 14288.9

# **EnCana Oil & Gas (USA) Inc**

**DJ Wattenberg**

**S18-T3N-R68W (Billings)**

**Billings 3G-18H**

**Hz**

**Plan #1**

## **Anticollision Report**

**09 January, 2013**

## Anticollision Report

<b>Company:</b>	EnCana Oil & Gas (USA) Inc	<b>Local Co-ordinate Reference:</b>	Well Billings 3G-18H
<b>Project:</b>	DJ Wattenberg	<b>TVD Reference:</b>	WELL @ 5159.0ft (Original Well Elev)
<b>Reference Site:</b>	S18-T3N-R68W (Billings)	<b>MD Reference:</b>	WELL @ 5159.0ft (Original Well Elev)
<b>Site Error:</b>	0.0ft	<b>North Reference:</b>	True
<b>Reference Well:</b>	Billings 3G-18H	<b>Survey Calculation Method:</b>	Minimum Curvature
<b>Well Error:</b>	0.0ft	<b>Output errors are at</b>	2.00 sigma
<b>Reference Wellbore</b>	Hz	<b>Database:</b>	USA EDM 5000 Multi Users DB
<b>Reference Design:</b>	Plan #1	<b>Offset TVD Reference:</b>	Offset Datum

<b>Reference</b>	Plan #1		
<b>Filter type:</b>	NO GLOBAL FILTER: Using user defined selection & filtering criteria		
<b>Interpolation Method:</b>	MD Interval 100.0ft	<b>Error Model:</b>	Systematic Ellipse
<b>Depth Range:</b>	Unlimited	<b>Scan Method:</b>	Closest Approach 3D
<b>Results Limited by:</b>	Maximum center-center distance of 500.0ft	<b>Error Surface:</b>	Elliptical Conic
<b>Warning Levels Evaluated at:</b>	2.00 Sigma		

<b>Survey Tool Program</b>	<b>Date</b>	1/9/2013		
<b>From (ft)</b>	<b>To (ft)</b>	<b>Survey (Wellbore)</b>	<b>Tool Name</b>	<b>Description</b>
0.0	14,288.9	Plan #1 (Hz)	MWD	Geolink MWD

Summary						
Site Name	Reference Measured Depth (ft)	Offset Measured Depth (ft)	Distance Between Centres (ft)	Distance Between Ellipses (ft)	Separation Factor	Warning
Offset Well - Wellbore - Design						
S18-T3N-R68W (Billings)						
Billings 2A-18H - Hz - Plan #1						Out of range
Billings 2B-18H - HZ - Plan #1						Out of range
Billings 2C-18H - HZ - Plan #1						Out of range
Billings 2D-18H - Hz - Plan #1						Out of range
Billings 2E-18H - HZ - Plan #1						Out of range
Billings 2F-18H - HZ - Plan #1						Out of range
Billings 2G-18H - Hz - Plan #1						Out of range
Billings 2H-18H - Hz - Plan #1						Out of range
Billings 3A-18H - Hz - Plan #1	200.0	200.0	61.9	61.3	94.873	CC, ES
Billings 3A-18H - Hz - Plan #1	600.0	594.9	86.3	84.2	41.639	SF
Billings 3B-18H - Hz - Plan #1	300.0	299.0	51.0	50.0	50.996	CC, ES
Billings 3B-18H - Hz - Plan #1	600.0	596.2	69.5	67.4	33.635	SF
Billings 3C-18H - Hz - Plan #1	300.0	299.0	40.1	39.1	40.068	CC
Billings 3C-18H - Hz - Plan #1	328.0	327.0	40.2	39.1	36.577	ES
Billings 3C-18H - Hz - Plan #1	500.0	498.6	45.3	43.6	26.636	SF
Billings 3D-18H - Hz - Plan #1	300.0	299.0	29.1	28.1	29.137	CC
Billings 3D-18H - Hz - Plan #1	328.1	327.1	29.2	28.1	26.613	ES
Billings 3D-18H - Hz - Plan #1	500.0	498.8	34.1	32.4	20.085	SF
Billings 3E-18H - Hz - Plan #1	300.0	299.0	21.9	20.9	21.855	CC
Billings 3E-18H - Hz - Plan #1	328.2	327.2	21.9	20.8	19.977	ES
Billings 3E-18H - Hz - Plan #1	500.0	499.1	26.4	24.7	15.536	SF
Billings 3F-18H - Hz - Plan #1	300.0	299.0	10.9	9.9	10.928	CC
Billings 3F-18H - Hz - Plan #1	328.5	327.5	11.0	9.9	10.018	ES
Billings 3F-18H - Hz - Plan #1	14,289.4	14,449.0	407.2	108.2	1.362	Level 3, SF
Billings 3H-18H - Hz - Plan #1	200.0	199.0	10.9	10.3	16.787	CC, ES
Billings 3H-18H - Hz - Plan #1	14,289.4	14,511.6	407.1	107.7	1.360	Level 3, SF

CC - Min centre to center distance or convergent point, SF - min separation factor, ES - min ellipse separation



# Anticollision Report

<b>Company:</b>	EnCana Oil & Gas (USA) Inc	<b>Local Co-ordinate Reference:</b>	Well Billings 3G-18H
<b>Project:</b>	DJ Wattenberg	<b>TVD Reference:</b>	WELL @ 5159.0ft (Original Well Elev)
<b>Reference Site:</b>	S18-T3N-R68W (Billings)	<b>MD Reference:</b>	WELL @ 5159.0ft (Original Well Elev)
<b>Site Error:</b>	0.0ft	<b>North Reference:</b>	True
<b>Reference Well:</b>	Billings 3G-18H	<b>Survey Calculation Method:</b>	Minimum Curvature
<b>Well Error:</b>	0.0ft	<b>Output errors are at</b>	2.00 sigma
<b>Reference Wellbore</b>	Hz	<b>Database:</b>	USA EDM 5000 Multi Users DB
<b>Reference Design:</b>	Plan #1	<b>Offset TVD Reference:</b>	Offset Datum

Offset Design S18-T3N-R68W (Billings) - Billings 3A-18H - Hz - Plan #1													Offset Site Error:	0.0 ft
Survey Program: 0-MWD													Offset Well Error:	0.0 ft
Reference		Offset		Semi Major Axis			Distance						Warning	
Measured Depth (ft)	Vertical Depth (ft)	Measured Depth (ft)	Vertical Depth (ft)	Reference (ft)	Offset (ft)	Highside Toolface (°)	Offset Wellbore Centre +N/-S (ft)	+E/-W (ft)	Between Centres (ft)	Between Ellipses (ft)	Total Uncertainty Axis	Separation Factor		
0.0	0.0	0.0	0.0	0.0	0.0	0.00	61.9	0.0	61.9					
100.0	100.0	100.0	100.0	0.2	0.2	0.00	61.9	0.0	61.9	61.6	0.30	203.922		
200.0	200.0	200.0	200.0	0.3	0.3	0.00	61.9	0.0	61.9	61.3	0.65	94.873 CC, ES		
300.0	300.0	299.1	299.1	0.5	0.5	-0.48	62.6	-0.5	62.6	61.6	1.00	62.599		
400.0	400.0	398.2	398.2	0.7	0.7	143.47	64.7	-2.1	65.2	63.9	1.35	48.337		
500.0	499.8	496.9	496.8	0.9	0.9	143.80	68.1	-4.7	72.9	71.2	1.70	42.810		
600.0	599.3	594.9	594.6	1.1	1.1	145.29	72.8	-8.2	86.3	84.2	2.07	41.639 SF		
700.0	698.0	691.8	691.1	1.4	1.3	147.23	78.7	-12.8	105.3	102.8	2.46	42.825		
800.0	795.8	787.1	786.0	1.8	1.5	149.12	85.8	-18.2	130.0	127.1	2.86	45.380		
900.0	892.9	881.0	879.4	2.2	1.7	150.81	94.1	-24.5	158.9	155.6	3.29	48.262		
1,000.0	989.9	974.3	971.9	2.6	2.0	151.71	103.5	-31.6	189.0	185.3	3.74	50.594		
1,100.0	1,087.0	1,066.9	1,063.6	3.1	2.2	152.06	114.0	-39.6	220.3	216.1	4.20	52.503		
1,200.0	1,184.0	1,158.9	1,154.4	3.5	2.5	152.07	125.7	-48.5	252.6	247.9	4.67	54.081		
1,300.0	1,281.0	1,250.1	1,244.3	4.0	2.8	151.85	138.3	-58.1	286.0	280.8	5.16	55.402		
1,400.0	1,378.0	1,340.6	1,333.1	4.4	3.2	151.49	152.0	-68.5	320.4	314.8	5.67	56.527		
1,500.0	1,475.1	1,430.3	1,420.9	4.9	3.5	151.03	166.7	-79.6	356.0	349.8	6.19	57.501		
1,600.0	1,572.1	1,519.1	1,507.5	5.3	3.9	150.50	182.3	-91.5	392.5	385.8	6.73	58.362		
1,700.0	1,669.1	1,607.1	1,593.0	5.8	4.3	149.92	198.8	-104.1	430.2	422.9	7.27	59.138		
1,800.0	1,766.2	1,694.2	1,677.3	6.2	4.7	149.32	216.1	-117.3	468.9	461.1	7.83	59.845		

# Anticollision Report

<b>Company:</b>	EnCana Oil & Gas (USA) Inc	<b>Local Co-ordinate Reference:</b>	Well Billings 3G-18H
<b>Project:</b>	DJ Wattenberg	<b>TVD Reference:</b>	WELL @ 5159.0ft (Original Well Elev)
<b>Reference Site:</b>	S18-T3N-R68W (Billings)	<b>MD Reference:</b>	WELL @ 5159.0ft (Original Well Elev)
<b>Site Error:</b>	0.0ft	<b>North Reference:</b>	True
<b>Reference Well:</b>	Billings 3G-18H	<b>Survey Calculation Method:</b>	Minimum Curvature
<b>Well Error:</b>	0.0ft	<b>Output errors are at</b>	2.00 sigma
<b>Reference Wellbore</b>	Hz	<b>Database:</b>	USA EDM 5000 Multi Users DB
<b>Reference Design:</b>	Plan #1	<b>Offset TVD Reference:</b>	Offset Datum

Offset Design S18-T3N-R68W (Billings) - Billings 3B-18H - Hz - Plan #1													Offset Site Error:	0.0 ft
Survey Program: 0-MWD													Offset Well Error:	0.0 ft
Reference		Offset		Semi Major Axis		Highside Toolface (°)	Offset Wellbore Centre		Distance		Total Uncertainty Axis	Separation Factor	Warning	
Measured Depth (ft)	Vertical Depth (ft)	Measured Depth (ft)	Vertical Depth (ft)	Reference (ft)	Offset (ft)		+N/-S (ft)	+E/-W (ft)	Between Centres (ft)	Between Ellipses (ft)				
0.0	0.0	0.0	0.0	0.0	0.0	0.00	51.0	0.0	51.0					
100.0	100.0	99.0	99.0	0.2	0.2	0.00	51.0	0.0	51.0	50.7	0.30	168.779		
200.0	200.0	199.0	199.0	0.3	0.3	0.00	51.0	0.0	51.0	50.3	0.65	78.340		
300.0	300.0	299.0	299.0	0.5	0.5	0.00	51.0	0.0	51.0	50.0	1.00	50.996 CC, ES		
400.0	400.0	398.4	398.4	0.7	0.7	144.69	51.5	-0.6	52.1	50.7	1.35	38.629		
500.0	499.8	497.6	497.6	0.9	0.9	145.64	53.2	-2.6	58.1	56.4	1.70	34.127		
600.0	599.3	596.2	596.1	1.1	1.0	147.58	56.0	-5.8	69.5	67.4	2.07	33.635 SF		
700.0	698.0	693.9	693.6	1.4	1.2	149.72	59.8	-10.3	86.4	84.0	2.45	35.328		
800.0	795.8	790.4	789.8	1.8	1.4	151.60	64.6	-15.9	108.9	106.1	2.85	38.274		
900.0	892.9	885.7	884.7	2.2	1.6	153.07	70.4	-22.7	135.3	132.0	3.27	41.402		
1,000.0	989.9	980.6	979.0	2.6	1.9	153.61	77.2	-30.7	162.6	158.9	3.71	43.807		
1,100.0	1,087.0	1,075.0	1,072.7	3.1	2.1	153.58	85.0	-39.8	190.8	186.6	4.18	45.653		
1,200.0	1,184.0	1,169.0	1,165.7	3.5	2.4	153.20	93.7	-50.0	219.8	215.1	4.67	47.069		
1,300.0	1,281.0	1,262.4	1,257.9	4.0	2.7	152.59	103.4	-61.3	249.6	244.4	5.18	48.156		
1,400.0	1,378.0	1,355.2	1,349.3	4.4	3.0	151.84	113.9	-73.7	280.2	274.5	5.72	48.997		
1,500.0	1,475.1	1,447.4	1,439.8	4.9	3.3	150.99	125.4	-87.1	311.8	305.5	6.28	49.655		
1,600.0	1,572.1	1,540.3	1,530.7	5.3	3.7	150.10	137.8	-101.6	344.2	337.3	6.86	50.183		
1,700.0	1,669.1	1,634.7	1,623.0	5.8	4.0	149.31	150.5	-116.5	376.7	369.3	7.45	50.585		
1,800.0	1,766.2	1,729.1	1,715.4	6.2	4.4	148.65	163.3	-131.4	409.4	401.3	8.04	50.915		
1,900.0	1,863.2	1,823.6	1,807.7	6.7	4.8	148.09	176.0	-146.4	442.0	433.4	8.64	51.189		
2,000.0	1,960.2	1,918.0	1,900.1	7.1	5.1	147.60	188.8	-161.3	474.8	465.5	9.23	51.422		

# Anticollision Report

<b>Company:</b>	EnCana Oil & Gas (USA) Inc	<b>Local Co-ordinate Reference:</b>	Well Billings 3G-18H
<b>Project:</b>	DJ Wattenberg	<b>TVD Reference:</b>	WELL @ 5159.0ft (Original Well Elev)
<b>Reference Site:</b>	S18-T3N-R68W (Billings)	<b>MD Reference:</b>	WELL @ 5159.0ft (Original Well Elev)
<b>Site Error:</b>	0.0ft	<b>North Reference:</b>	True
<b>Reference Well:</b>	Billings 3G-18H	<b>Survey Calculation Method:</b>	Minimum Curvature
<b>Well Error:</b>	0.0ft	<b>Output errors are at</b>	2.00 sigma
<b>Reference Wellbore</b>	Hz	<b>Database:</b>	USA EDM 5000 Multi Users DB
<b>Reference Design:</b>	Plan #1	<b>Offset TVD Reference:</b>	Offset Datum

Offset Design S18-T3N-R68W (Billings) - Billings 3C-18H - Hz - Plan #1													Offset Site Error:	0.0 ft
Survey Program: 0-MWD													Offset Well Error:	0.0 ft
Reference		Offset		Semi Major Axis			Distance				Total		Warning	
Measured Depth (ft)	Vertical Depth (ft)	Measured Depth (ft)	Vertical Depth (ft)	Reference (ft)	Offset (ft)	Highside Toolface (°)	Offset Wellbore Centre +N/-S (ft)	+E/-W (ft)	Between Centres (ft)	Between Ellipses (ft)	Uncertainty Axis	Separation Factor		
0.0	0.0	0.0	0.0	0.0	0.0	0.00	40.1	0.0	40.1					
100.0	100.0	99.0	99.0	0.2	0.2	0.00	40.1	0.0	40.1	39.8	0.30	132.612		
200.0	200.0	199.0	199.0	0.3	0.3	0.00	40.1	0.0	40.1	39.4	0.65	61.553		
300.0	300.0	299.0	299.0	0.5	0.5	0.00	40.1	0.0	40.1	39.1	1.00	40.068 CC		
328.0	328.0	327.0	327.0	0.5	0.5	145.08	40.1	0.0	40.2	39.1	1.10	36.577 ES		
400.0	400.0	399.0	399.0	0.7	0.7	145.52	40.1	0.0	40.6	39.3	1.35	30.102		
500.0	499.8	498.6	498.6	0.9	0.8	148.18	40.4	-0.8	45.3	43.6	1.70	26.636 SF		
600.0	599.3	597.8	597.8	1.1	1.0	151.22	41.3	-3.2	55.1	53.0	2.06	26.749		
700.0	698.0	696.4	696.3	1.4	1.2	153.79	42.9	-7.1	70.0	67.6	2.43	28.830		
800.0	795.8	794.1	793.8	1.8	1.4	155.65	45.0	-12.6	90.0	87.2	2.81	32.028		
900.0	892.9	891.0	890.4	2.2	1.6	156.80	47.8	-19.6	113.5	110.2	3.22	35.244		
1,000.0	989.9	987.8	986.7	2.6	1.8	156.90	51.1	-28.0	137.2	133.6	3.65	37.550		
1,100.0	1,087.0	1,084.4	1,082.8	3.1	2.0	156.39	55.0	-38.0	161.3	157.2	4.12	39.149		
1,200.0	1,184.0	1,180.9	1,178.5	3.5	2.3	155.49	59.5	-49.4	185.6	181.0	4.62	40.203		
1,300.0	1,281.0	1,277.1	1,273.7	4.0	2.6	154.36	64.6	-62.3	210.3	205.2	5.15	40.843		
1,400.0	1,378.0	1,373.0	1,368.3	4.4	2.9	153.07	70.3	-76.7	235.4	229.7	5.72	41.175		
1,500.0	1,475.1	1,469.3	1,463.2	4.9	3.2	151.77	76.4	-92.2	260.9	254.6	6.31	41.350		
1,600.0	1,572.1	1,565.8	1,558.2	5.3	3.5	150.67	82.5	-107.8	286.5	279.6	6.91	41.456		
1,700.0	1,669.1	1,662.3	1,653.3	5.8	3.8	149.76	88.7	-123.4	312.2	304.6	7.52	41.523		
1,800.0	1,766.2	1,758.9	1,748.4	6.2	4.1	148.99	94.8	-139.0	337.9	329.8	8.13	41.565		
1,900.0	1,863.2	1,855.4	1,843.4	6.7	4.5	148.32	101.0	-154.6	363.7	355.0	8.74	41.591		
2,000.0	1,960.2	1,952.0	1,938.5	7.1	4.8	147.75	107.1	-170.2	389.5	380.2	9.36	41.605		
2,100.0	2,057.2	2,048.5	2,033.6	7.6	5.1	147.24	113.2	-185.8	415.4	405.4	9.98	41.613		
2,200.0	2,154.3	2,145.0	2,128.6	8.0	5.4	146.79	119.4	-201.4	441.3	430.7	10.60	41.615		
2,300.0	2,251.3	2,241.6	2,223.7	8.5	5.8	146.40	125.5	-217.0	467.2	456.0	11.23	41.613		
2,400.0	2,348.3	2,338.1	2,318.8	9.0	6.1	146.04	131.7	-232.6	493.1	481.3	11.85	41.610		

# Anticollision Report

<b>Company:</b>	EnCana Oil & Gas (USA) Inc	<b>Local Co-ordinate Reference:</b>	Well Billings 3G-18H
<b>Project:</b>	DJ Wattenberg	<b>TVD Reference:</b>	WELL @ 5159.0ft (Original Well Elev)
<b>Reference Site:</b>	S18-T3N-R68W (Billings)	<b>MD Reference:</b>	WELL @ 5159.0ft (Original Well Elev)
<b>Site Error:</b>	0.0ft	<b>North Reference:</b>	True
<b>Reference Well:</b>	Billings 3G-18H	<b>Survey Calculation Method:</b>	Minimum Curvature
<b>Well Error:</b>	0.0ft	<b>Output errors are at</b>	2.00 sigma
<b>Reference Wellbore</b>	Hz	<b>Database:</b>	USA EDM 5000 Multi Users DB
<b>Reference Design:</b>	Plan #1	<b>Offset TVD Reference:</b>	Offset Datum

Offset Design S18-T3N-R68W (Billings) - Billings 3D-18H - Hz - Plan #1													Offset Site Error: 0.0 ft	
Survey Program: 0-MWD													Offset Well Error: 0.0 ft	
Reference		Offset		Semi Major Axis			Distance							Warning
Measured Depth (ft)	Vertical Depth (ft)	Measured Depth (ft)	Vertical Depth (ft)	Reference (ft)	Offset (ft)	Highside Toolface (°)	Offset Wellbore Centre +N/-S (ft)	+E/-W (ft)	Between Centres (ft)	Between Ellipses (ft)	Total Uncertainty Axis	Separation Factor		
0.0	0.0	0.0	0.0	0.0	0.0	0.00	29.1	0.0	29.2					
100.0	100.0	99.0	99.0	0.2	0.2	0.00	29.1	0.0	29.1	28.8	0.30	96.432		
200.0	200.0	199.0	199.0	0.3	0.3	0.00	29.1	0.0	29.1	28.5	0.65	44.759		
300.0	300.0	299.0	299.0	0.5	0.5	0.00	29.1	0.0	29.1	28.1	1.00	29.137 CC		
328.1	328.1	327.1	327.1	0.5	0.5	145.12	29.1	0.0	29.2	28.1	1.10	26.613 ES		
400.0	400.0	399.0	399.0	0.7	0.7	145.72	29.1	0.0	29.7	28.3	1.35	21.999		
500.0	499.8	498.8	498.8	0.9	0.8	150.60	29.1	0.0	34.1	32.4	1.70	20.085 SF		
600.0	599.3	598.5	598.5	1.1	1.0	156.19	29.1	-0.8	43.3	41.3	2.05	21.121		
700.0	698.0	697.7	697.7	1.4	1.2	159.90	28.9	-3.4	57.1	54.7	2.40	23.757		
800.0	795.8	796.4	796.3	1.8	1.4	162.09	28.6	-7.6	75.3	72.6	2.76	27.297		
900.0	892.9	894.7	894.4	2.2	1.6	163.15	28.2	-13.6	96.2	93.1	3.14	30.666		
1,000.0	989.9	993.4	992.7	2.6	1.8	163.08	27.7	-21.2	116.5	113.0	3.54	32.940		
1,100.0	1,087.0	1,092.2	1,091.1	3.1	2.0	162.35	27.1	-30.5	136.2	132.2	3.96	34.365		
1,200.0	1,184.0	1,191.2	1,189.6	3.5	2.2	161.21	26.3	-41.5	155.3	150.9	4.42	35.120		
1,300.0	1,281.0	1,290.4	1,287.9	4.0	2.5	159.78	25.4	-54.3	173.9	169.0	4.92	35.347		
1,400.0	1,378.0	1,389.6	1,386.0	4.4	2.8	158.14	24.5	-68.8	192.0	186.6	5.46	35.164		
1,500.0	1,475.1	1,488.8	1,483.9	4.9	3.1	156.32	23.3	-84.9	209.8	203.8	6.05	34.670		
1,600.0	1,572.1	1,587.1	1,580.7	5.3	3.4	154.55	22.2	-101.9	227.5	220.9	6.67	34.109		
1,700.0	1,669.1	1,685.3	1,677.4	5.8	3.7	153.03	21.0	-118.9	245.4	238.1	7.30	33.601		
1,800.0	1,766.2	1,783.5	1,774.1	6.2	4.0	151.72	19.9	-136.0	263.4	255.5	7.95	33.146		
1,900.0	1,863.2	1,881.7	1,870.8	6.7	4.3	150.57	18.7	-153.0	281.6	273.0	8.60	32.741		
2,000.0	1,960.2	1,979.9	1,967.5	7.1	4.7	149.57	17.6	-170.0	299.8	290.6	9.26	32.379		
2,100.0	2,057.2	2,078.1	2,064.2	7.6	5.0	148.68	16.4	-187.0	318.2	308.2	9.92	32.057		
2,200.0	2,154.3	2,176.3	2,160.9	8.0	5.3	147.89	15.2	-204.0	336.5	326.0	10.59	31.769		
2,300.0	2,251.3	2,274.4	2,257.6	8.5	5.7	147.18	14.1	-221.0	355.0	343.7	11.27	31.511		
2,400.0	2,348.3	2,372.6	2,354.3	9.0	6.0	146.54	12.9	-238.0	373.5	361.5	11.94	31.279		
2,500.0	2,445.4	2,470.8	2,451.0	9.4	6.3	145.96	11.8	-255.0	392.0	379.4	12.62	31.070		
2,600.0	2,542.4	2,569.0	2,547.7	9.9	6.7	145.43	10.6	-272.0	410.6	397.3	13.30	30.880		
2,700.0	2,639.4	2,667.2	2,644.4	10.3	7.0	144.95	9.4	-289.1	429.2	415.2	13.98	30.708		
2,800.0	2,736.5	2,765.4	2,741.1	10.8	7.4	144.50	8.3	-306.1	447.8	433.2	14.66	30.550		
2,900.0	2,833.5	2,863.6	2,837.8	11.3	7.7	144.10	7.1	-323.1	466.5	451.1	15.34	30.406		
3,000.0	2,930.5	2,961.8	2,934.5	11.7	8.0	143.72	6.0	-340.1	485.1	469.1	16.02	30.274		

# Anticollision Report

<b>Company:</b>	EnCana Oil & Gas (USA) Inc	<b>Local Co-ordinate Reference:</b>	Well Billings 3G-18H
<b>Project:</b>	DJ Wattenberg	<b>TVD Reference:</b>	WELL @ 5159.0ft (Original Well Elev)
<b>Reference Site:</b>	S18-T3N-R68W (Billings)	<b>MD Reference:</b>	WELL @ 5159.0ft (Original Well Elev)
<b>Site Error:</b>	0.0ft	<b>North Reference:</b>	True
<b>Reference Well:</b>	Billings 3G-18H	<b>Survey Calculation Method:</b>	Minimum Curvature
<b>Well Error:</b>	0.0ft	<b>Output errors are at</b>	2.00 sigma
<b>Reference Wellbore</b>	Hz	<b>Database:</b>	USA EDM 5000 Multi Users DB
<b>Reference Design:</b>	Plan #1	<b>Offset TVD Reference:</b>	Offset Datum

Offset Design S18-T3N-R68W (Billings) - Billings 3E-18H - Hz - Plan #1													Offset Site Error:	0.0 ft
Survey Program: 0-MWD													Offset Well Error:	0.0 ft
Reference		Offset		Semi Major Axis			Distance				Total		Warning	
Measured Depth (ft)	Vertical Depth (ft)	Measured Depth (ft)	Vertical Depth (ft)	Reference (ft)	Offset (ft)	Highside Toolface (°)	Offset Wellbore Centre +N/-S (ft)	+E/-W (ft)	Between Centres (ft)	Between Ellipses (ft)	Uncertainty Axis	Separation Factor		
0.0	0.0	0.0	0.0	0.0	0.0	0.00	21.9	0.0	21.9					
100.0	100.0	99.0	99.0	0.2	0.2	0.00	21.9	0.0	21.9	21.6	0.30	72.334		
200.0	200.0	199.0	199.0	0.3	0.3	0.00	21.9	0.0	21.9	21.2	0.65	33.574		
300.0	300.0	299.0	299.0	0.5	0.5	0.00	21.9	0.0	21.9	20.9	1.00	21.855 CC		
328.2	328.2	327.2	327.2	0.6	0.5	145.15	21.9	0.0	21.9	20.8	1.10	19.977 ES		
400.0	400.0	399.0	399.0	0.7	0.7	145.95	21.9	0.0	22.4	21.0	1.35	16.602		
500.0	499.8	499.1	499.1	0.9	0.8	150.63	21.5	-0.8	26.4	24.7	1.70	15.536 SF		
600.0	599.3	599.1	599.0	1.1	1.0	155.51	20.2	-3.1	34.2	32.2	2.05	16.659		
700.0	698.0	698.8	698.7	1.4	1.2	159.26	18.2	-6.9	45.9	43.5	2.41	19.034		
800.0	795.8	798.2	797.9	1.8	1.4	161.81	15.4	-12.2	61.4	58.7	2.77	22.160		
900.0	892.9	897.5	896.8	2.2	1.6	163.25	11.8	-19.1	79.0	75.9	3.15	25.081		
1,000.0	989.9	997.2	996.1	2.6	1.8	163.48	7.4	-27.5	95.5	91.9	3.55	26.900		
1,100.0	1,087.0	1,097.3	1,095.6	3.1	2.1	163.02	2.2	-37.5	110.7	106.7	3.97	27.878		
1,200.0	1,184.0	1,197.8	1,195.3	3.5	2.3	162.10	-3.9	-49.1	124.7	120.2	4.42	28.204		
1,300.0	1,281.0	1,298.6	1,294.9	4.0	2.6	160.83	-10.8	-62.3	137.4	132.5	4.91	28.019		
1,400.0	1,378.0	1,399.6	1,394.5	4.4	2.9	159.28	-18.6	-77.0	149.1	143.7	5.43	27.432		
1,500.0	1,475.1	1,498.9	1,492.3	4.9	3.3	157.74	-26.6	-92.3	160.3	154.3	5.99	26.759		
1,600.0	1,572.1	1,598.1	1,590.1	5.3	3.6	156.40	-34.6	-107.5	171.5	165.0	6.56	26.147		
1,700.0	1,669.1	1,697.4	1,687.8	5.8	3.9	155.22	-42.6	-122.8	182.9	175.7	7.14	25.595		
1,800.0	1,766.2	1,796.7	1,785.6	6.2	4.3	154.18	-50.6	-138.1	194.3	186.5	7.74	25.098		
1,900.0	1,863.2	1,896.0	1,883.4	6.7	4.6	153.26	-58.6	-153.3	205.8	197.4	8.35	24.652		
2,000.0	1,960.2	1,995.3	1,981.2	7.1	4.9	152.43	-66.7	-168.6	217.3	208.3	8.96	24.251		
2,100.0	2,057.2	2,094.6	2,079.0	7.6	5.3	151.69	-74.7	-183.9	228.8	219.2	9.58	23.890		
2,200.0	2,154.3	2,193.9	2,176.7	8.0	5.6	151.02	-82.7	-199.1	240.4	230.2	10.20	23.563		
2,300.0	2,251.3	2,293.2	2,274.5	8.5	5.9	150.41	-90.7	-214.4	252.0	241.2	10.83	23.268		
2,400.0	2,348.3	2,392.4	2,372.3	9.0	6.3	149.86	-98.7	-229.7	263.7	252.2	11.47	22.999		
2,500.0	2,445.4	2,491.7	2,470.1	9.4	6.6	149.35	-106.7	-244.9	275.4	263.3	12.10	22.754		
2,600.0	2,542.4	2,591.0	2,567.9	9.9	7.0	148.88	-114.7	-260.2	287.0	274.3	12.74	22.530		
2,700.0	2,639.4	2,690.3	2,665.6	10.3	7.3	148.45	-122.8	-275.5	298.7	285.4	13.38	22.325		
2,800.0	2,736.5	2,789.6	2,763.4	10.8	7.7	148.06	-130.8	-290.7	310.5	296.4	14.03	22.136		
2,900.0	2,833.5	2,888.9	2,861.2	11.3	8.0	147.69	-138.8	-306.0	322.2	307.5	14.67	21.962		
3,000.0	2,930.5	2,988.2	2,959.0	11.7	8.4	147.34	-146.8	-321.2	334.0	318.6	15.32	21.801		
3,100.0	3,027.5	3,087.5	3,056.8	12.2	8.7	147.02	-154.8	-336.5	345.7	329.7	15.97	21.652		
3,200.0	3,124.6	3,186.8	3,154.5	12.6	9.1	146.73	-162.8	-351.8	357.5	340.9	16.62	21.514		
3,300.0	3,221.6	3,286.0	3,252.3	13.1	9.4	146.45	-170.8	-367.0	369.3	352.0	17.27	21.385		
3,400.0	3,318.6	3,385.3	3,350.1	13.6	9.7	146.18	-178.9	-382.3	381.0	363.1	17.92	21.264		
3,500.0	3,415.7	3,484.6	3,447.9	14.0	10.1	145.94	-186.9	-397.6	392.8	374.3	18.57	21.152		
3,600.0	3,512.7	3,583.9	3,545.7	14.5	10.4	145.71	-194.9	-412.8	404.6	385.4	19.23	21.046		
3,700.0	3,609.7	3,683.2	3,643.4	14.9	10.8	145.49	-202.9	-428.1	416.4	396.6	19.88	20.947		
3,800.0	3,706.8	3,782.5	3,741.2	15.4	11.1	145.28	-210.9	-443.4	428.2	407.7	20.54	20.854		
3,900.0	3,803.8	3,881.8	3,839.0	15.9	11.5	145.08	-218.9	-458.6	440.1	418.9	21.19	20.766		
4,000.0	3,900.8	3,981.1	3,936.8	16.3	11.8	144.90	-226.9	-473.9	451.9	430.0	21.85	20.684		
4,100.0	3,997.8	4,080.4	4,034.6	16.8	12.2	144.72	-235.0	-489.2	463.7	441.2	22.50	20.605		
4,200.0	4,094.9	4,179.6	4,132.3	17.2	12.5	144.55	-243.0	-504.4	475.5	452.4	23.16	20.531		
4,300.0	4,191.9	4,278.9	4,230.1	17.7	12.9	144.40	-251.0	-519.7	487.4	463.6	23.82	20.461		
4,400.0	4,288.9	4,378.2	4,327.9	18.2	13.2	144.24	-259.0	-535.0	499.2	474.7	24.48	20.395		

CC - Min centre to center distance or convergent point, SF - min separation factor, ES - min ellipse separation

# Anticollision Report

<b>Company:</b>	EnCana Oil & Gas (USA) Inc	<b>Local Co-ordinate Reference:</b>	Well Billings 3G-18H
<b>Project:</b>	DJ Wattenberg	<b>TVD Reference:</b>	WELL @ 5159.0ft (Original Well Elev)
<b>Reference Site:</b>	S18-T3N-R68W (Billings)	<b>MD Reference:</b>	WELL @ 5159.0ft (Original Well Elev)
<b>Site Error:</b>	0.0ft	<b>North Reference:</b>	True
<b>Reference Well:</b>	Billings 3G-18H	<b>Survey Calculation Method:</b>	Minimum Curvature
<b>Well Error:</b>	0.0ft	<b>Output errors are at</b>	2.00 sigma
<b>Reference Wellbore</b>	Hz	<b>Database:</b>	USA EDM 5000 Multi Users DB
<b>Reference Design:</b>	Plan #1	<b>Offset TVD Reference:</b>	Offset Datum

Offset Design S18-T3N-R68W (Billings) - Billings 3F-18H - Hz - Plan #1													Offset Site Error:	0.0 ft
Survey Program: 0-MWD													Offset Well Error:	0.0 ft
Reference		Offset		Semi Major Axis			Distance				Total Uncertainty Axis	Separation Factor	Warning	
Measured Depth (ft)	Vertical Depth (ft)	Measured Depth (ft)	Vertical Depth (ft)	Reference (ft)	Offset (ft)	Highside Toolface (°)	Offset Wellbore Centre +N/-S (ft)	+E/-W (ft)	Between Centres (ft)	Between Ellipses (ft)				
0.0	0.0	0.0	0.0	0.0	0.0	0.00	10.9	0.0	11.0					
100.0	100.0	99.0	99.0	0.2	0.2	0.00	10.9	0.0	10.9	10.6	0.30	36.167		
200.0	200.0	199.0	199.0	0.3	0.3	0.00	10.9	0.0	10.9	10.3	0.65	16.787		
300.0	300.0	299.0	299.0	0.5	0.5	0.00	10.9	0.0	10.9	9.9	1.00	10.928 CC		
328.5	328.5	327.5	327.5	0.6	0.5	145.32	10.9	0.0	11.0	9.9	1.10	10.018 ES		
400.0	400.0	399.0	399.0	0.7	0.7	146.87	10.9	0.0	11.5	10.1	1.35	8.503		
500.0	499.8	499.3	499.3	0.9	0.9	153.38	9.7	-1.2	14.7	13.0	1.70	8.653		
600.0	599.3	599.6	599.5	1.1	1.0	157.76	6.1	-5.0	20.0	17.9	2.06	9.716		
700.0	698.0	700.1	699.5	1.4	1.3	160.26	-0.1	-11.2	27.2	24.8	2.42	11.244		
800.0	795.8	800.6	799.3	1.8	1.5	161.61	-8.6	-20.0	36.4	33.6	2.80	13.006		
900.0	892.9	901.4	898.9	2.2	1.8	161.67	-19.7	-31.3	45.7	42.5	3.21	14.248		
1,000.0	989.9	1,002.7	998.3	2.6	2.2	159.86	-33.3	-45.1	52.0	48.3	3.67	14.158		
1,100.0	1,087.0	1,103.4	1,096.4	3.1	2.5	156.80	-48.8	-61.0	55.8	51.6	4.22	13.237		
1,200.0	1,184.0	1,203.2	1,193.8	3.5	2.9	153.94	-64.6	-77.1	59.5	54.7	4.82	12.353		
1,300.0	1,281.0	1,303.1	1,291.1	4.0	3.4	151.42	-80.3	-93.1	63.3	57.8	5.46	11.595		
1,400.0	1,378.0	1,403.0	1,388.4	4.4	3.8	149.19	-96.0	-109.2	67.2	61.0	6.13	10.950		
1,500.0	1,475.1	1,502.9	1,485.8	4.9	4.2	147.20	-111.7	-125.3	71.2	64.3	6.84	10.402		
1,600.0	1,572.1	1,602.8	1,583.1	5.3	4.6	145.42	-127.5	-141.3	75.2	67.6	7.57	9.937		
1,700.0	1,669.1	1,702.7	1,680.4	5.8	5.0	143.83	-143.2	-157.4	79.3	71.0	8.32	9.539		
1,800.0	1,766.2	1,802.6	1,777.7	6.2	5.5	142.40	-158.9	-173.4	83.5	74.4	9.08	9.198		
1,900.0	1,863.2	1,902.5	1,875.1	6.7	5.9	141.10	-174.6	-189.5	87.7	77.9	9.85	8.904		
2,000.0	1,960.2	2,002.4	1,972.4	7.1	6.3	139.92	-190.3	-205.5	92.0	81.4	10.64	8.649		
2,100.0	2,057.2	2,102.3	2,069.7	7.6	6.7	138.85	-206.1	-221.6	96.3	84.9	11.43	8.425		
2,200.0	2,154.3	2,202.2	2,167.1	8.0	7.2	137.87	-221.8	-237.6	100.6	88.4	12.23	8.229		
2,300.0	2,251.3	2,302.1	2,264.4	8.5	7.6	136.97	-237.5	-253.7	105.0	92.0	13.03	8.056		
2,400.0	2,348.3	2,402.0	2,361.7	9.0	8.0	136.14	-253.2	-269.7	109.4	95.5	13.84	7.902		
2,500.0	2,445.4	2,501.8	2,459.1	9.4	8.5	135.38	-268.9	-285.8	113.8	99.1	14.66	7.764		
2,600.0	2,542.4	2,601.7	2,556.4	9.9	8.9	134.67	-284.7	-301.9	118.2	102.7	15.47	7.641		
2,700.0	2,639.4	2,701.6	2,653.7	10.3	9.3	134.02	-300.4	-317.9	122.7	106.4	16.29	7.529		
2,800.0	2,736.5	2,801.5	2,751.1	10.8	9.7	133.41	-316.1	-334.0	127.1	110.0	17.11	7.429		
2,900.0	2,833.5	2,901.4	2,848.4	11.3	10.2	132.84	-331.8	-350.0	131.6	113.6	17.93	7.337		
3,000.0	2,930.5	3,001.3	2,945.7	11.7	10.6	132.31	-347.6	-366.1	136.1	117.3	18.76	7.254		
3,100.0	3,027.5	3,101.2	3,043.1	12.2	11.0	131.81	-363.3	-382.1	140.6	121.0	19.58	7.177		
3,200.0	3,124.6	3,201.1	3,140.4	12.6	11.5	131.34	-379.0	-398.2	145.1	124.6	20.41	7.107		
3,300.0	3,221.6	3,301.0	3,237.7	13.1	11.9	130.91	-394.7	-414.2	149.6	128.3	21.24	7.042		
3,400.0	3,318.6	3,400.9	3,335.1	13.6	12.3	130.49	-410.4	-430.3	154.1	132.0	22.07	6.982		
3,500.0	3,415.7	3,500.8	3,432.4	14.0	12.8	130.11	-426.2	-446.3	158.6	135.7	22.90	6.927		
3,600.0	3,512.7	3,600.7	3,529.7	14.5	13.2	129.74	-441.9	-462.4	163.1	139.4	23.73	6.876		
3,700.0	3,609.7	3,700.5	3,627.0	14.9	13.6	129.39	-457.6	-478.5	167.7	143.1	24.56	6.828		
3,800.0	3,706.8	3,800.4	3,724.4	15.4	14.1	129.06	-473.3	-494.5	172.2	146.8	25.39	6.783		
3,900.0	3,803.8	3,900.3	3,821.7	15.9	14.5	128.75	-489.1	-510.6	176.8	150.6	26.22	6.742		
4,000.0	3,900.8	4,000.2	3,919.0	16.3	14.9	128.45	-504.8	-526.6	181.3	154.3	27.05	6.703		
4,100.0	3,997.8	4,100.1	4,016.4	16.8	15.4	128.17	-520.5	-542.7	185.9	158.0	27.89	6.666		
4,200.0	4,094.9	4,200.0	4,113.7	17.2	15.8	127.90	-536.2	-558.7	190.5	161.7	28.72	6.632		
4,300.0	4,191.9	4,299.9	4,211.0	17.7	16.2	127.65	-551.9	-574.8	195.0	165.5	29.55	6.599		
4,400.0	4,288.9	4,399.8	4,308.4	18.2	16.7	127.40	-567.7	-590.8	199.6	169.2	30.39	6.568		
4,500.0	4,386.0	4,499.7	4,405.7	18.6	17.1	127.17	-583.4	-606.9	204.2	172.9	31.22	6.540		
4,600.0	4,483.0	4,599.6	4,503.0	19.1	17.5	126.95	-599.1	-623.0	208.7	176.7	32.05	6.512		
4,700.0	4,580.0	4,699.5	4,600.4	19.5	18.0	126.73	-614.8	-639.0	213.3	180.4	32.89	6.486		
4,800.0	4,677.0	4,799.4	4,697.7	20.0	18.4	126.53	-630.6	-655.1	217.9	184.2	33.72	6.462		
4,900.0	4,774.1	4,899.2	4,795.0	20.5	18.8	126.33	-646.3	-671.1	222.5	187.9	34.56	6.439		
5,000.0	4,871.1	4,999.1	4,892.4	20.9	19.3	126.14	-662.0	-687.2	227.1	191.7	35.39	6.416		

CC - Min centre to center distance or convergent point, SF - min separation factor, ES - min ellipse separation

# Anticollision Report

<b>Company:</b>	EnCana Oil & Gas (USA) Inc	<b>Local Co-ordinate Reference:</b>	Well Billings 3G-18H
<b>Project:</b>	DJ Wattenberg	<b>TVD Reference:</b>	WELL @ 5159.0ft (Original Well Elev)
<b>Reference Site:</b>	S18-T3N-R68W (Billings)	<b>MD Reference:</b>	WELL @ 5159.0ft (Original Well Elev)
<b>Site Error:</b>	0.0ft	<b>North Reference:</b>	True
<b>Reference Well:</b>	Billings 3G-18H	<b>Survey Calculation Method:</b>	Minimum Curvature
<b>Well Error:</b>	0.0ft	<b>Output errors are at</b>	2.00 sigma
<b>Reference Wellbore</b>	Hz	<b>Database:</b>	USA EDM 5000 Multi Users DB
<b>Reference Design:</b>	Plan #1	<b>Offset TVD Reference:</b>	Offset Datum

Offset Design S18-T3N-R68W (Billings) - Billings 3F-18H - Hz - Plan #1													Offset Site Error: 0.0 ft			
Survey Program: 0-MWD															Offset Well Error: 0.0 ft	
Reference		Offset		Semi Major Axis			Distance									
Measured Depth (ft)	Vertical Depth (ft)	Measured Depth (ft)	Vertical Depth (ft)	Reference (ft)	Offset (ft)	Highside Toolface (°)	Offset Wellbore Centre +N/-S (ft)	+E/-W (ft)	Between Centres (ft)	Between Ellipses (ft)	Total Uncertainty Axis	Separation Factor	Warning			
5,100.0	4,968.1	5,097.2	4,988.0		21.4	19.7	126.07	-677.1	-702.6	231.9	195.7	36.17	6.410			
5,200.0	5,065.2	5,193.5	5,082.6		21.8	20.0	126.64	-690.0	-715.7	238.0	201.3	36.70	6.485			
5,300.0	5,162.2	5,289.4	5,177.3		22.3	20.3	127.84	-700.5	-726.5	245.7	208.7	36.98	6.644			
5,400.0	5,259.2	5,384.7	5,271.8		22.8	20.5	129.60	-708.8	-735.0	255.1	218.1	37.01	6.893			
5,500.0	5,356.3	5,479.1	5,365.8		23.2	20.7	131.80	-714.9	-741.2	266.5	229.7	36.79	7.242			
5,600.0	5,453.3	5,572.5	5,459.0		23.7	20.8	134.33	-718.8	-745.1	280.0	243.6	36.37	7.700			
5,700.0	5,550.3	5,664.7	5,551.2		24.1	20.9	137.07	-720.5	-746.9	296.0	260.3	35.76	8.279			
5,800.0	5,647.5	5,760.0	5,646.5		24.6	21.0	140.06	-720.6	-747.0	313.7	278.7	34.98	8.968			
5,900.0	5,745.7	5,858.2	5,744.7		24.9	21.1	142.44	-720.6	-747.0	328.6	294.2	34.36	9.563			
6,000.0	5,844.7	5,957.3	5,843.7		25.2	21.2	144.04	-720.6	-747.0	339.6	305.6	33.98	9.995			
6,100.0	5,944.4	6,056.9	5,943.4		25.3	21.3	144.99	-720.6	-747.0	346.6	312.8	33.81	10.250			
6,200.0	6,044.3	6,156.8	6,043.3		25.4	21.4	145.35	-720.6	-747.0	349.3	315.5	33.84	10.323			
6,300.0	6,144.3	6,256.8	6,143.3		25.5	21.4	0.36	-720.6	-747.0	349.3	310.5	38.80	9.004			
6,400.0	6,244.3	6,356.8	6,243.3		25.6	21.5	0.36	-720.6	-747.0	349.3	310.3	39.00	8.958			
6,500.0	6,344.2	6,456.8	6,343.2		25.6	21.6	-90.00	-720.6	-747.0	349.3	314.7	34.60	10.096			
6,500.3	6,344.5	6,457.0	6,343.5		25.6	21.6	-90.00	-720.6	-747.0	349.3	314.7	34.60	10.095			
6,600.0	6,443.1	6,555.6	6,442.1		25.5	21.7	-92.34	-720.6	-747.0	349.6	314.1	35.55	9.835			
6,700.0	6,538.9	6,654.0	6,540.5		25.3	21.8	-96.50	-720.6	-745.7	351.8	315.0	36.84	9.548			
6,800.0	6,629.9	6,757.9	6,643.3		25.0	21.7	-100.95	-720.6	-731.8	356.4	318.9	37.51	9.501			
6,900.0	6,714.2	6,866.8	6,747.8		24.6	21.4	-105.18	-720.6	-701.5	363.0	325.7	37.26	9.740			
7,000.0	6,790.3	6,981.1	6,851.2		24.2	21.0	-109.09	-720.6	-653.0	371.0	334.9	36.10	10.278			
7,100.0	6,856.6	7,101.1	6,950.0		23.8	20.5	-112.58	-720.6	-585.1	379.9	345.7	34.16	11.120			
7,200.0	6,911.8	7,227.0	7,040.0		23.4	19.8	-115.55	-720.6	-497.3	388.6	356.8	31.77	12.231			
7,300.0	6,955.0	7,358.4	7,116.0		23.1	19.2	-117.93	-720.6	-390.3	396.4	366.9	29.48	13.447			
7,400.0	6,985.1	7,494.5	7,172.7		23.0	18.8	-119.64	-720.6	-266.9	402.4	374.4	28.01	14.370			
7,500.0	7,001.7	7,633.9	7,205.6		22.9	18.6	-120.61	-720.6	-131.6	406.0	378.0	28.07	14.463			
7,600.0	7,005.8	7,759.6	7,213.2		23.1	18.8	-120.83	-720.6	-6.3	406.9	377.1	29.73	13.683			
7,700.0	7,007.5	7,859.6	7,215.0		23.5	19.5	-120.83	-720.6	93.7	406.9	375.0	31.85	12.774			
7,800.0	7,009.3	7,959.6	7,216.7		24.2	20.7	-120.83	-720.6	193.7	406.9	372.5	34.36	11.843			
7,900.0	7,011.0	8,059.6	7,218.5		25.3	22.3	-120.83	-720.6	293.7	406.9	369.7	37.18	10.943			
8,000.0	7,012.7	8,159.6	7,220.2		26.6	24.0	-120.83	-720.6	393.7	406.9	366.6	40.26	10.107			
8,100.0	7,014.5	8,259.6	7,222.0		28.1	25.8	-120.83	-720.6	493.7	406.9	363.4	43.53	9.346			
8,200.0	7,016.2	8,359.6	7,223.7		29.9	27.8	-120.83	-720.6	593.7	406.9	359.9	46.97	8.663			
8,300.0	7,018.0	8,459.6	7,225.5		31.7	29.8	-120.83	-720.5	693.6	406.9	356.4	50.53	8.053			
8,400.0	7,019.7	8,559.6	7,227.2		33.7	31.9	-120.83	-720.5	793.6	406.9	352.7	54.19	7.509			
8,500.0	7,021.5	8,659.6	7,229.0		35.7	34.1	-120.83	-720.5	893.6	406.9	349.0	57.93	7.025			
8,600.0	7,023.2	8,759.6	7,230.7		37.8	36.3	-120.83	-720.5	993.6	406.9	345.2	61.73	6.592			
8,700.0	7,025.0	8,859.6	7,232.4		40.0	38.5	-120.83	-720.5	1,093.6	406.9	341.3	65.59	6.203			
8,800.0	7,026.7	8,959.6	7,234.2		42.2	40.7	-120.83	-720.5	1,193.6	406.9	337.4	69.50	5.855			
8,900.0	7,028.5	9,059.6	7,235.9		44.4	43.0	-120.83	-720.5	1,293.5	406.9	333.5	73.45	5.540			
9,000.0	7,030.2	9,159.6	7,237.7		46.6	45.3	-120.83	-720.5	1,393.5	406.9	329.5	77.43	5.256			
9,100.0	7,031.9	9,259.6	7,239.4		48.9	47.6	-120.82	-720.5	1,493.5	406.9	325.5	81.43	4.997			
9,200.0	7,033.7	9,359.6	7,241.2		51.1	49.9	-120.82	-720.5	1,593.5	406.9	321.5	85.47	4.761			
9,300.0	7,035.4	9,459.6	7,242.9		53.4	52.3	-120.82	-720.5	1,693.5	406.9	317.4	89.52	4.546			
9,400.0	7,037.2	9,559.6	7,244.7		55.8	54.6	-120.82	-720.5	1,793.5	406.9	313.4	93.59	4.348			
9,500.0	7,038.9	9,659.6	7,246.4		58.1	57.0	-120.82	-720.5	1,893.5	407.0	309.3	97.67	4.167			
9,600.0	7,040.7	9,759.6	7,248.2		60.4	59.3	-120.82	-720.5	1,993.4	407.0	305.2	101.77	3.999			
9,700.0	7,042.4	9,859.6	7,249.9		62.8	61.7	-120.82	-720.5	2,093.4	407.0	301.1	105.88	3.844			
9,800.0	7,044.2	9,959.6	7,251.6		65.1	64.1	-120.82	-720.5	2,193.4	407.0	297.0	110.00	3.700			
9,900.0	7,045.9	10,059.6	7,253.4		67.5	66.5	-120.82	-720.5	2,293.4	407.0	292.8	114.14	3.566			
10,000.0	7,047.6	10,159.6	7,255.1		69.9	68.9	-120.82	-720.5	2,393.4	407.0	288.7	118.28	3.441			
10,100.0	7,049.4	10,259.6	7,256.9		72.2	71.3	-120.82	-720.5	2,493.4	407.0	284.6	122.43	3.324			

CC - Min centre to center distance or convergent point, SF - min separation factor, ES - min ellipse separation

# Anticollision Report

<b>Company:</b>	EnCana Oil & Gas (USA) Inc	<b>Local Co-ordinate Reference:</b>	Well Billings 3G-18H
<b>Project:</b>	DJ Wattenberg	<b>TVD Reference:</b>	WELL @ 5159.0ft (Original Well Elev)
<b>Reference Site:</b>	S18-T3N-R68W (Billings)	<b>MD Reference:</b>	WELL @ 5159.0ft (Original Well Elev)
<b>Site Error:</b>	0.0ft	<b>North Reference:</b>	True
<b>Reference Well:</b>	Billings 3G-18H	<b>Survey Calculation Method:</b>	Minimum Curvature
<b>Well Error:</b>	0.0ft	<b>Output errors are at</b>	2.00 sigma
<b>Reference Wellbore</b>	Hz	<b>Database:</b>	USA EDM 5000 Multi Users DB
<b>Reference Design:</b>	Plan #1	<b>Offset TVD Reference:</b>	Offset Datum

Offset Design S18-T3N-R68W (Billings) - Billings 3F-18H - Hz - Plan #1													Offset Site Error:	0.0 ft
Survey Program: 0-MWD													Offset Well Error:	0.0 ft
Reference		Offset		Semi Major Axis			Distance				Total		Warning	
Measured Depth (ft)	Vertical Depth (ft)	Measured Depth (ft)	Vertical Depth (ft)	Reference (ft)	Offset (ft)	Highside Toolface (°)	Offset Wellbore Centre +N/-S (ft)	+E/-W (ft)	Between Centres (ft)	Between Ellipses (ft)	Uncertainty Axis	Separation Factor		
10,200.0	7,051.1	10,359.6	7,258.6	74.6	73.7	-120.82	-720.5	2,593.3	407.0	280.4	126.58	3.215		
10,300.0	7,052.9	10,459.6	7,260.4	77.0	76.1	-120.82	-720.5	2,693.3	407.0	276.2	130.74	3.113		
10,400.0	7,054.6	10,559.6	7,262.1	79.4	78.5	-120.82	-720.5	2,793.3	407.0	272.1	134.91	3.017		
10,500.0	7,056.4	10,659.6	7,263.9	81.8	80.9	-120.82	-720.5	2,893.3	407.0	267.9	139.08	2.926		
10,600.0	7,058.1	10,759.6	7,265.6	84.2	83.4	-120.82	-720.5	2,993.3	407.0	263.7	143.26	2.841		
10,700.0	7,059.9	10,859.6	7,267.4	86.6	85.8	-120.82	-720.5	3,093.3	407.0	259.6	147.44	2.760		
10,800.0	7,061.6	10,959.6	7,269.1	89.0	88.2	-120.82	-720.5	3,193.3	407.0	255.4	151.63	2.684		
10,900.0	7,063.4	11,059.6	7,270.8	91.4	90.6	-120.82	-720.5	3,293.2	407.0	251.2	155.82	2.612		
11,000.0	7,065.1	11,159.6	7,272.6	93.9	93.1	-120.82	-720.5	3,393.2	407.0	247.0	160.01	2.544		
11,100.0	7,066.8	11,259.6	7,274.3	96.3	95.5	-120.82	-720.5	3,493.2	407.0	242.8	164.21	2.479		
11,200.0	7,068.6	11,359.6	7,276.1	98.7	97.9	-120.82	-720.5	3,593.2	407.0	238.6	168.41	2.417		
11,300.0	7,070.3	11,459.6	7,277.8	101.1	100.4	-120.82	-720.5	3,693.2	407.0	234.4	172.61	2.358		
11,400.0	7,072.1	11,559.6	7,279.6	103.6	102.8	-120.82	-720.5	3,793.2	407.0	230.2	176.82	2.302		
11,500.0	7,073.8	11,659.6	7,281.3	106.0	105.2	-120.82	-720.5	3,893.2	407.0	226.0	181.02	2.249		
11,600.0	7,075.6	11,759.6	7,283.1	108.4	107.7	-120.82	-720.5	3,993.1	407.0	221.8	185.23	2.197		
11,700.0	7,077.3	11,859.6	7,284.8	110.8	110.1	-120.82	-720.4	4,093.1	407.0	217.6	189.44	2.149		
11,800.0	7,079.1	11,959.6	7,286.5	113.3	112.6	-120.81	-720.4	4,193.1	407.1	213.4	193.66	2.102		
11,900.0	7,080.8	12,059.6	7,288.3	115.7	115.0	-120.81	-720.4	4,293.1	407.1	209.2	197.87	2.057		
12,000.0	7,082.6	12,159.6	7,290.0	118.2	117.5	-120.81	-720.4	4,393.1	407.1	205.0	202.09	2.014		
12,100.0	7,084.3	12,259.6	7,291.8	120.6	119.9	-120.81	-720.4	4,493.1	407.1	200.8	206.31	1.973		
12,200.0	7,086.0	12,359.6	7,293.5	123.0	122.4	-120.81	-720.4	4,593.0	407.1	196.5	210.53	1.934		
12,300.0	7,087.8	12,459.6	7,295.3	125.5	124.8	-120.81	-720.4	4,693.0	407.1	192.3	214.75	1.896		
12,400.0	7,089.5	12,559.6	7,297.0	127.9	127.3	-120.81	-720.4	4,793.0	407.1	188.1	218.97	1.859		
12,500.0	7,091.3	12,659.6	7,298.8	130.4	129.7	-120.81	-720.4	4,893.0	407.1	183.9	223.19	1.824		
12,600.0	7,093.0	12,759.6	7,300.5	132.8	132.2	-120.81	-720.4	4,993.0	407.1	179.7	227.42	1.790		
12,700.0	7,094.8	12,859.6	7,302.3	135.3	134.6	-120.81	-720.4	5,093.0	407.1	175.4	231.65	1.757		
12,800.0	7,096.5	12,959.6	7,304.0	137.7	137.1	-120.81	-720.4	5,193.0	407.1	171.2	235.87	1.726		
12,900.0	7,098.3	13,059.6	7,305.7	140.2	139.5	-120.81	-720.4	5,292.9	407.1	167.0	240.10	1.696		
13,000.0	7,100.0	13,159.6	7,307.5	142.6	142.0	-120.81	-720.4	5,392.9	407.1	162.8	244.33	1.666		
13,100.0	7,101.8	13,259.6	7,309.2	145.1	144.4	-120.81	-720.4	5,492.9	407.1	158.5	248.56	1.638		
13,200.0	7,103.5	13,359.6	7,311.0	147.5	146.9	-120.81	-720.4	5,592.9	407.1	154.3	252.79	1.610		
13,300.0	7,105.2	13,459.6	7,312.7	150.0	149.3	-120.81	-720.4	5,692.9	407.1	150.1	257.02	1.584		
13,400.0	7,107.0	13,559.6	7,314.5	152.4	151.8	-120.81	-720.4	5,792.9	407.1	145.9	261.26	1.558		
13,500.0	7,108.7	13,659.6	7,316.2	154.9	154.3	-120.81	-720.4	5,892.8	407.1	141.6	265.49	1.533		
13,600.0	7,110.5	13,759.6	7,318.0	157.3	156.7	-120.81	-720.4	5,992.8	407.1	137.4	269.72	1.509		
13,700.0	7,112.2	13,859.6	7,319.7	159.8	159.2	-120.81	-720.4	6,092.8	407.1	133.2	273.96	1.486 Level 3		
13,800.0	7,114.0	13,959.6	7,321.5	162.2	161.6	-120.81	-720.4	6,192.8	407.1	128.9	278.19	1.464 Level 3		
13,900.0	7,115.7	14,059.6	7,323.2	164.7	164.1	-120.81	-720.4	6,292.8	407.1	124.7	282.43	1.442 Level 3		
14,000.0	7,117.5	14,159.6	7,324.9	167.1	166.6	-120.81	-720.4	6,392.8	407.1	120.5	286.67	1.420 Level 3		
14,100.0	7,119.2	14,259.6	7,326.7	169.6	169.0	-120.81	-720.4	6,492.8	407.2	116.2	290.90	1.400 Level 3		
14,200.0	7,120.9	14,359.6	7,328.4	172.0	171.5	-120.81	-720.4	6,592.7	407.2	112.0	295.14	1.380 Level 3		
14,289.4	7,122.5	14,449.0	7,330.0	174.2	173.7	-120.81	-720.4	6,682.1	407.2	108.2	298.93	1.362 Level 3, SF		



# Anticollision Report

<b>Company:</b>	EnCana Oil & Gas (USA) Inc	<b>Local Co-ordinate Reference:</b>	Well Billings 3G-18H
<b>Project:</b>	DJ Wattenberg	<b>TVD Reference:</b>	WELL @ 5159.0ft (Original Well Elev)
<b>Reference Site:</b>	S18-T3N-R68W (Billings)	<b>MD Reference:</b>	WELL @ 5159.0ft (Original Well Elev)
<b>Site Error:</b>	0.0ft	<b>North Reference:</b>	True
<b>Reference Well:</b>	Billings 3G-18H	<b>Survey Calculation Method:</b>	Minimum Curvature
<b>Well Error:</b>	0.0ft	<b>Output errors are at</b>	2.00 sigma
<b>Reference Wellbore</b>	Hz	<b>Database:</b>	USA EDM 5000 Multi Users DB
<b>Reference Design:</b>	Plan #1	<b>Offset TVD Reference:</b>	Offset Datum

Offset Design S18-T3N-R68W (Billings) - Billings 3H-18H - Hz - Plan #1													Offset Site Error:	0.0 ft
Survey Program: 0-MWD													Offset Well Error:	0.0 ft
Reference		Offset		Semi Major Axis			Distance					Warning		
Measured Depth (ft)	Vertical Depth (ft)	Measured Depth (ft)	Vertical Depth (ft)	Reference (ft)	Offset (ft)	Highside Toolface (°)	Offset Wellbore Centre +N/-S (ft)	+E/-W (ft)	Between Centres (ft)	Between Ellipses (ft)	Total Uncertainty Axis		Separation Factor	
0.0	0.0	0.0	0.0	0.0	0.0	180.00	-10.9	0.0	11.0					
100.0	100.0	99.0	99.0	0.2	0.2	180.00	-10.9	0.0	10.9	10.6	0.30	36.167		
200.0	200.0	199.0	199.0	0.3	0.3	180.00	-10.9	0.0	10.9	10.3	0.65	16.787 CC, ES		
300.0	300.0	298.6	298.6	0.5	0.5	-176.04	-12.4	-0.9	12.4	11.4	1.00	12.401		
400.0	400.0	398.1	397.9	0.7	0.7	-24.25	-16.8	-3.5	16.6	15.3	1.35	12.311		
500.0	499.8	497.4	496.9	0.9	0.9	-22.07	-24.2	-7.8	20.0	18.3	1.70	11.750		
600.0	599.3	596.7	595.4	1.1	1.2	-22.84	-34.6	-13.9	21.9	19.8	2.07	10.579		
700.0	698.0	696.0	693.5	1.4	1.5	-25.98	-47.9	-21.6	22.2	19.8	2.47	9.013		
800.0	795.8	795.2	791.0	1.8	1.9	-31.99	-64.1	-31.1	21.2	18.3	2.96	7.165		
873.1	866.9	867.8	861.8	2.1	2.2	-37.01	-77.8	-39.2	20.8	17.4	3.43	6.069		
900.0	892.9	894.6	887.8	2.2	2.3	-39.02	-83.2	-42.4	20.7	17.1	3.63	5.717		
1,000.0	989.9	994.6	984.9	2.6	2.7	-43.72	-103.8	-54.4	21.7	17.3	4.35	4.976		
1,100.0	1,087.0	1,094.6	1,082.0	3.1	3.1	-48.00	-124.4	-66.4	22.7	17.6	5.16	4.409		
1,200.0	1,184.0	1,194.6	1,179.1	3.5	3.6	-51.88	-144.9	-78.5	23.9	17.9	6.02	3.977		
1,300.0	1,281.0	1,294.5	1,276.2	4.0	4.0	-55.37	-165.5	-90.5	25.2	18.3	6.92	3.646		
1,400.0	1,378.0	1,394.5	1,373.3	4.4	4.5	-58.52	-186.0	-102.6	26.6	18.8	7.85	3.390		
1,500.0	1,475.1	1,494.5	1,470.4	4.9	4.9	-61.34	-206.6	-114.6	28.1	19.3	8.79	3.190		
1,600.0	1,572.1	1,594.5	1,567.5	5.3	5.4	-63.89	-227.2	-126.7	29.6	19.8	9.75	3.032		
1,700.0	1,669.1	1,694.5	1,664.6	5.8	5.8	-66.18	-247.7	-138.7	31.1	20.4	10.71	2.905		
1,800.0	1,766.2	1,794.4	1,761.7	6.2	6.3	-68.25	-268.3	-150.8	32.7	21.0	11.68	2.802		
1,900.0	1,863.2	1,894.4	1,858.8	6.7	6.7	-70.13	-288.9	-162.8	34.4	21.7	12.65	2.718		
2,000.0	1,960.2	1,994.4	1,955.9	7.1	7.2	-71.83	-309.4	-174.9	36.1	22.4	13.61	2.648		
2,100.0	2,057.2	2,094.4	2,053.0	7.6	7.6	-73.38	-330.0	-186.9	37.8	23.2	14.58	2.590		
2,200.0	2,154.3	2,194.4	2,150.1	8.0	8.1	-74.79	-350.6	-198.9	39.5	24.0	15.54	2.542		
2,300.0	2,251.3	2,294.3	2,247.2	8.5	8.5	-76.09	-371.1	-211.0	41.3	24.8	16.50	2.500		
2,400.0	2,348.3	2,394.3	2,344.3	9.0	9.0	-77.28	-391.7	-223.0	43.0	25.6	17.46	2.465		
2,500.0	2,445.4	2,494.3	2,441.4	9.4	9.4	-78.37	-412.3	-235.1	44.8	26.4	18.41	2.434		
2,600.0	2,542.4	2,594.3	2,538.5	9.9	9.9	-79.38	-432.8	-247.1	46.6	27.3	19.36	2.408		
2,700.0	2,639.4	2,694.3	2,635.6	10.3	10.3	-80.32	-453.4	-259.2	48.4	28.1	20.31	2.385		
2,800.0	2,736.5	2,794.2	2,732.7	10.8	10.8	-81.18	-473.9	-271.2	50.3	29.0	21.25	2.365		
2,900.0	2,833.5	2,894.2	2,829.8	11.3	11.2	-81.99	-494.5	-283.3	52.1	29.9	22.20	2.348		
3,000.0	2,930.5	2,994.2	2,926.9	11.7	11.7	-82.74	-515.1	-295.3	54.0	30.8	23.14	2.332		
3,100.0	3,027.5	3,094.2	3,024.0	12.2	12.1	-83.44	-535.6	-307.4	55.8	31.8	24.08	2.319		
3,200.0	3,124.6	3,194.2	3,121.1	12.6	12.6	-84.09	-556.2	-319.4	57.7	32.7	25.01	2.307		
3,300.0	3,221.6	3,294.1	3,218.2	13.1	13.1	-84.70	-576.8	-331.4	59.6	33.6	25.95	2.296		
3,400.0	3,318.6	3,394.1	3,315.3	13.6	13.5	-85.28	-597.3	-343.5	61.5	34.6	26.88	2.286		
3,500.0	3,415.7	3,494.1	3,412.4	14.0	14.0	-85.82	-617.9	-355.5	63.3	35.5	27.81	2.278		
3,600.0	3,512.7	3,594.1	3,509.5	14.5	14.4	-86.33	-638.5	-367.6	65.2	36.5	28.74	2.270		
3,700.0	3,609.7	3,694.1	3,606.6	14.9	14.9	-86.81	-659.0	-379.6	67.1	37.5	29.67	2.263		
3,800.0	3,706.8	3,794.0	3,703.7	15.4	15.3	-87.27	-679.6	-391.7	69.0	38.4	30.60	2.256		
3,900.0	3,803.8	3,894.0	3,800.8	15.9	15.8	-87.70	-700.1	-403.7	70.9	39.4	31.52	2.251		
4,000.0	3,900.8	3,994.0	3,897.9	16.3	16.2	-88.11	-720.7	-415.8	72.9	40.4	32.45	2.245		
4,100.0	3,997.8	4,094.0	3,995.0	16.8	16.7	-88.50	-741.3	-427.8	74.8	41.4	33.37	2.241		
4,200.0	4,094.9	4,194.0	4,092.1	17.2	17.1	-88.86	-761.8	-439.9	76.7	42.4	34.29	2.236		
4,300.0	4,191.9	4,293.9	4,189.2	17.7	17.6	-89.21	-782.4	-451.9	78.6	43.4	35.22	2.232		
4,400.0	4,288.9	4,393.9	4,286.3	18.2	18.0	-89.55	-803.0	-463.9	80.5	44.4	36.14	2.229		
4,500.0	4,386.0	4,493.9	4,383.4	18.6	18.5	-89.86	-823.5	-476.0	82.5	45.4	37.06	2.225		
4,600.0	4,483.0	4,593.9	4,480.5	19.1	18.9	-90.17	-844.1	-488.0	84.4	46.4	37.97	2.222		
4,700.0	4,580.0	4,693.9	4,577.6	19.5	19.4	-90.46	-864.7	-500.1	86.3	47.4	38.89	2.219		
4,800.0	4,677.0	4,793.8	4,674.7	20.0	19.9	-90.73	-885.2	-512.1	88.3	48.4	39.81	2.217		
4,900.0	4,774.1	4,893.8	4,771.8	20.5	20.3	-91.00	-905.8	-524.2	90.2	49.5	40.73	2.214		
5,000.0	4,871.1	4,993.8	4,868.9	20.9	20.8	-91.25	-926.3	-536.2	92.1	50.5	41.64	2.212		

CC - Min centre to center distance or convergent point, SF - min separation factor, ES - min ellipse separation

# Anticollision Report

<b>Company:</b>	EnCana Oil & Gas (USA) Inc	<b>Local Co-ordinate Reference:</b>	Well Billings 3G-18H
<b>Project:</b>	DJ Wattenberg	<b>TVD Reference:</b>	WELL @ 5159.0ft (Original Well Elev)
<b>Reference Site:</b>	S18-T3N-R68W (Billings)	<b>MD Reference:</b>	WELL @ 5159.0ft (Original Well Elev)
<b>Site Error:</b>	0.0ft	<b>North Reference:</b>	True
<b>Reference Well:</b>	Billings 3G-18H	<b>Survey Calculation Method:</b>	Minimum Curvature
<b>Well Error:</b>	0.0ft	<b>Output errors are at</b>	2.00 sigma
<b>Reference Wellbore</b>	Hz	<b>Database:</b>	USA EDM 5000 Multi Users DB
<b>Reference Design:</b>	Plan #1	<b>Offset TVD Reference:</b>	Offset Datum

Offset Design S18-T3N-R68W (Billings) - Billings 3H-18H - Hz - Plan #1													Offset Site Error:	0.0 ft
Survey Program: O-MWD													Offset Well Error:	0.0 ft
Reference		Offset		Semi Major Axis			Distance							Warning
Measured Depth (ft)	Vertical Depth (ft)	Measured Depth (ft)	Vertical Depth (ft)	Reference (ft)	Offset (ft)	Highside Toolface (°)	Offset Wellbore Centre +N/-S (ft)	+E/-W (ft)	Between Centres (ft)	Between Ellipses (ft)	Total Uncertainty Axis	Separation Factor		
5,100.0	4,968.1	5,093.8	4,966.0	21.4	21.2	-91.50	-946.9	-548.3	94.1	51.5	42.56	2.210		
5,200.0	5,065.2	5,193.8	5,063.1	21.8	21.7	-91.73	-967.5	-560.3	96.0	52.5	43.47	2.208		
5,300.0	5,162.2	5,293.7	5,160.2	22.3	22.1	-91.95	-988.0	-572.4	97.9	53.6	44.39	2.207		
5,400.0	5,259.2	5,393.7	5,257.3	22.8	22.6	-92.17	-1,008.6	-584.4	99.9	54.6	45.30	2.205		
5,500.0	5,356.3	5,493.7	5,354.4	23.2	23.0	-92.38	-1,029.2	-596.5	101.8	55.6	46.21	2.204		
5,600.0	5,453.3	5,593.7	5,451.5	23.7	23.5	-92.58	-1,049.7	-608.5	103.8	56.6	47.12	2.202		
5,700.0	5,550.3	5,693.7	5,548.6	24.1	23.9	-92.77	-1,070.3	-620.5	105.7	57.7	48.04	2.201		
5,800.0	5,647.5	5,793.6	5,645.6	24.6	24.4	-92.59	-1,090.9	-632.6	107.6	58.7	48.93	2.200		
5,900.0	5,745.7	5,893.5	5,742.6	24.9	24.8	-90.00	-1,111.4	-644.6	109.5	59.8	49.68	2.203		
6,000.0	5,844.7	5,992.9	5,839.2	25.2	25.3	-84.88	-1,131.8	-656.6	111.8	61.8	50.06	2.234		
6,100.0	5,944.4	6,091.7	5,935.1	25.3	25.7	-77.60	-1,152.2	-668.5	116.2	66.5	49.64	2.340		
6,200.0	6,044.3	6,189.6	6,030.2	25.4	26.2	-68.88	-1,172.3	-680.3	124.1	76.0	48.05	2.583		
6,300.0	6,144.3	6,286.7	6,124.5	25.5	26.6	154.95	-1,192.3	-692.0	136.3	103.0	33.38	4.085		
6,400.0	6,244.3	6,383.8	6,218.8	25.6	27.1	162.28	-1,212.2	-703.7	151.4	113.8	37.65	4.021		
6,500.0	6,344.2	6,480.6	6,312.8	25.6	27.5	78.19	-1,232.2	-715.4	168.1	127.7	40.39	4.161		
6,600.0	6,443.1	6,574.8	6,404.3	25.5	27.9	85.69	-1,251.5	-726.7	185.6	149.0	36.61	5.069		
6,700.0	6,538.9	6,667.6	6,494.7	25.3	28.3	93.83	-1,270.7	-734.5	207.6	175.3	32.26	6.434		
6,800.0	6,629.9	6,765.3	6,590.1	25.0	28.6	100.47	-1,290.8	-730.2	234.2	205.3	28.84	8.119		
6,900.0	6,714.2	6,869.0	6,689.8	24.6	28.8	105.73	-1,311.8	-711.2	263.5	237.1	26.46	9.960		
7,000.0	6,790.3	6,980.0	6,792.3	24.2	28.9	109.87	-1,333.3	-674.8	293.9	269.0	24.92	11.797		
7,100.0	6,856.6	7,099.6	6,895.2	23.8	28.8	113.14	-1,354.9	-618.0	323.6	299.6	24.01	13.481		
7,200.0	6,911.8	7,228.9	6,994.3	23.4	28.7	115.74	-1,375.5	-537.9	351.1	327.5	23.62	14.862		
7,300.0	6,955.0	7,368.5	7,083.6	23.1	28.5	117.77	-1,394.0	-432.5	374.7	350.9	23.76	15.768		
7,400.0	6,985.1	7,517.9	7,155.2	23.0	28.4	119.30	-1,408.7	-302.5	392.8	368.3	24.51	16.027		
7,500.0	7,001.7	7,675.5	7,200.4	22.9	28.3	120.35	-1,417.7	-152.2	404.0	378.1	25.94	15.576		
7,600.0	7,005.8	7,822.2	7,213.1	23.1	28.5	120.78	-1,419.8	-6.2	407.2	379.2	28.00	14.544		
7,700.0	7,007.5	7,922.2	7,214.9	23.5	28.8	120.78	-1,419.8	93.7	407.2	376.9	30.32	13.433		
7,800.0	7,009.3	8,022.2	7,216.6	24.2	29.3	120.78	-1,419.8	193.7	407.2	374.2	33.02	12.332		
7,900.0	7,011.0	8,122.2	7,218.4	25.3	30.0	120.78	-1,419.8	293.7	407.2	371.2	36.03	11.303		
8,000.0	7,012.7	8,222.2	7,220.1	26.6	31.0	120.78	-1,419.8	393.7	407.2	368.0	39.27	10.371		
8,100.0	7,014.5	8,322.2	7,221.9	28.1	32.1	120.78	-1,419.8	493.7	407.2	364.5	42.68	9.540		
8,200.0	7,016.2	8,422.2	7,223.6	29.9	33.5	120.78	-1,419.8	593.7	407.2	361.0	46.24	8.807		
8,300.0	7,018.0	8,522.2	7,225.4	31.7	35.0	120.78	-1,419.8	693.7	407.2	357.3	49.91	8.160		
8,400.0	7,019.7	8,622.2	7,227.1	33.7	36.7	120.78	-1,419.8	793.6	407.2	353.6	53.66	7.589		
8,500.0	7,021.5	8,722.2	7,228.9	35.7	38.5	120.78	-1,419.8	893.6	407.2	349.7	57.48	7.084		
8,600.0	7,023.2	8,822.2	7,230.6	37.8	40.3	120.78	-1,419.8	993.6	407.2	345.9	61.36	6.636		
8,700.0	7,025.0	8,922.2	7,232.3	40.0	42.3	120.78	-1,419.8	1,093.6	407.2	341.9	65.29	6.237		
8,800.0	7,026.7	9,022.2	7,234.1	42.2	44.3	120.78	-1,419.8	1,193.6	407.2	338.0	69.26	5.880		
8,900.0	7,028.5	9,122.2	7,235.8	44.4	46.4	120.79	-1,419.8	1,293.6	407.2	334.0	73.26	5.559		
9,000.0	7,030.2	9,222.2	7,237.6	46.6	48.5	120.79	-1,419.8	1,393.5	407.2	329.9	77.28	5.269		
9,100.0	7,031.9	9,322.2	7,239.3	48.9	50.7	120.79	-1,419.8	1,493.5	407.2	325.9	81.33	5.007		
9,200.0	7,033.7	9,422.2	7,241.1	51.1	52.9	120.79	-1,419.8	1,593.5	407.2	321.8	85.40	4.768		
9,300.0	7,035.4	9,522.2	7,242.8	53.4	55.1	120.79	-1,419.8	1,693.5	407.2	317.7	89.49	4.550		
9,400.0	7,037.2	9,622.2	7,244.6	55.8	57.3	120.79	-1,419.8	1,793.5	407.2	313.6	93.59	4.351		
9,500.0	7,038.9	9,722.2	7,246.3	58.1	59.6	120.79	-1,419.8	1,893.5	407.2	309.5	97.70	4.168		
9,600.0	7,040.7	9,822.2	7,248.1	60.4	61.8	120.79	-1,419.8	1,993.5	407.2	305.4	101.83	3.999		
9,700.0	7,042.4	9,922.2	7,249.8	62.8	64.1	120.79	-1,419.8	2,093.4	407.2	301.2	105.97	3.843		
9,800.0	7,044.2	10,022.2	7,251.5	65.1	66.4	120.79	-1,419.8	2,193.4	407.2	297.1	110.11	3.698		
9,900.0	7,045.9	10,122.2	7,253.3	67.5	68.7	120.79	-1,419.8	2,293.4	407.2	292.9	114.26	3.564		
10,000.0	7,047.6	10,222.2	7,255.0	69.9	71.1	120.79	-1,419.8	2,393.4	407.2	288.8	118.42	3.438		
10,100.0	7,049.4	10,322.2	7,256.8	72.2	73.4	120.79	-1,419.8	2,493.4	407.2	284.6	122.59	3.321		
10,200.0	7,051.1	10,422.2	7,258.5	74.6	75.7	120.79	-1,419.8	2,593.4	407.2	280.4	126.76	3.212		

CC - Min centre to center distance or convergent point, SF - min separation factor, ES - min ellipse separation

# Anticollision Report

<b>Company:</b>	EnCana Oil & Gas (USA) Inc	<b>Local Co-ordinate Reference:</b>	Well Billings 3G-18H
<b>Project:</b>	DJ Wattenberg	<b>TVD Reference:</b>	WELL @ 5159.0ft (Original Well Elev)
<b>Reference Site:</b>	S18-T3N-R68W (Billings)	<b>MD Reference:</b>	WELL @ 5159.0ft (Original Well Elev)
<b>Site Error:</b>	0.0ft	<b>North Reference:</b>	True
<b>Reference Well:</b>	Billings 3G-18H	<b>Survey Calculation Method:</b>	Minimum Curvature
<b>Well Error:</b>	0.0ft	<b>Output errors are at</b>	2.00 sigma
<b>Reference Wellbore</b>	Hz	<b>Database:</b>	USA EDM 5000 Multi Users DB
<b>Reference Design:</b>	Plan #1	<b>Offset TVD Reference:</b>	Offset Datum

Offset Design S18-T3N-R68W (Billings) - Billings 3H-18H - Hz - Plan #1													Offset Site Error:	0.0 ft
Survey Program: 0-MWD													Offset Well Error:	0.0 ft
Reference		Offset		Semi Major Axis		Highside Toolface (°)	Distance		Total Uncertainty Axis	Separation Factor	Warning			
Measured Depth (ft)	Vertical Depth (ft)	Measured Depth (ft)	Vertical Depth (ft)	Reference (ft)	Offset (ft)		Offset Wellbore Centre +N/-S (ft)	+E/-W (ft)				Between Centres (ft)	Between Ellipses (ft)	
10,300.0	7,052.9	10,522.2	7,260.3	77.0	78.1	120.79	-1,419.8	2,693.3	407.2	276.2	130.94	3.110		
10,400.0	7,054.6	10,622.2	7,262.0	79.4	80.5	120.79	-1,419.8	2,793.3	407.2	272.1	135.13	3.013		
10,500.0	7,056.4	10,722.2	7,263.8	81.8	82.8	120.79	-1,419.8	2,893.3	407.2	267.9	139.31	2.923		
10,600.0	7,058.1	10,822.2	7,265.5	84.2	85.2	120.79	-1,419.8	2,993.3	407.2	263.7	143.50	2.837		
10,700.0	7,059.9	10,922.2	7,267.3	86.6	87.6	120.79	-1,419.8	3,093.3	407.2	259.5	147.70	2.757		
10,800.0	7,061.6	11,022.2	7,269.0	89.0	90.0	120.79	-1,419.8	3,193.3	407.2	255.3	151.90	2.681		
10,900.0	7,063.4	11,122.2	7,270.7	91.4	92.3	120.79	-1,419.8	3,293.3	407.2	251.1	156.10	2.608		
11,000.0	7,065.1	11,222.2	7,272.5	93.9	94.7	120.79	-1,419.8	3,393.2	407.2	246.9	160.30	2.540		
11,100.0	7,066.8	11,322.2	7,274.2	96.3	97.1	120.79	-1,419.8	3,493.2	407.2	242.7	164.51	2.475		
11,200.0	7,068.6	11,422.2	7,276.0	98.7	99.5	120.79	-1,419.8	3,593.2	407.2	238.4	168.72	2.413		
11,300.0	7,070.3	11,522.2	7,277.7	101.1	101.9	120.79	-1,419.8	3,693.2	407.2	234.2	172.93	2.355		
11,400.0	7,072.1	11,622.2	7,279.5	103.6	104.3	120.79	-1,419.8	3,793.2	407.2	230.0	177.14	2.298		
11,500.0	7,073.8	11,722.2	7,281.2	106.0	106.7	120.79	-1,419.8	3,893.2	407.2	225.8	181.36	2.245		
11,600.0	7,075.6	11,822.2	7,283.0	108.4	109.2	120.79	-1,419.8	3,993.1	407.2	221.6	185.58	2.194		
11,700.0	7,077.3	11,922.2	7,284.7	110.8	111.6	120.79	-1,419.8	4,093.1	407.2	217.4	189.79	2.145		
11,800.0	7,079.1	12,022.2	7,286.4	113.3	114.0	120.79	-1,419.8	4,193.1	407.2	213.1	194.02	2.099		
11,900.0	7,080.8	12,122.2	7,288.2	115.7	116.4	120.79	-1,419.8	4,293.1	407.2	208.9	198.24	2.054		
12,000.0	7,082.6	12,222.2	7,289.9	118.2	118.8	120.79	-1,419.8	4,393.1	407.2	204.7	202.46	2.011		
12,100.0	7,084.3	12,322.2	7,291.7	120.6	121.3	120.79	-1,419.8	4,493.1	407.1	200.5	206.68	1.970		
12,200.0	7,086.0	12,422.2	7,293.4	123.0	123.7	120.79	-1,419.8	4,593.1	407.1	196.2	210.91	1.930		
12,300.0	7,087.8	12,522.2	7,295.2	125.5	126.1	120.79	-1,419.8	4,693.0	407.1	192.0	215.14	1.892		
12,400.0	7,089.5	12,622.2	7,296.9	127.9	128.5	120.79	-1,419.8	4,793.0	407.1	187.8	219.36	1.856		
12,500.0	7,091.3	12,722.2	7,298.7	130.4	131.0	120.79	-1,419.8	4,893.0	407.1	183.5	223.59	1.821		
12,600.0	7,093.0	12,822.2	7,300.4	132.8	133.4	120.79	-1,419.8	4,993.0	407.1	179.3	227.82	1.787		
12,700.0	7,094.8	12,922.2	7,302.2	135.3	135.8	120.79	-1,419.8	5,093.0	407.1	175.1	232.05	1.754		
12,800.0	7,096.5	13,022.2	7,303.9	137.7	138.3	120.79	-1,419.8	5,193.0	407.1	170.9	236.29	1.723		
12,900.0	7,098.3	13,122.2	7,305.6	140.2	140.7	120.79	-1,419.8	5,292.9	407.1	166.6	240.52	1.693		
13,000.0	7,100.0	13,222.2	7,307.4	142.6	143.2	120.79	-1,419.8	5,392.9	407.1	162.4	244.75	1.663		
13,100.0	7,101.8	13,322.2	7,309.1	145.1	145.6	120.79	-1,419.8	5,492.9	407.1	158.1	248.99	1.635		
13,200.0	7,103.5	13,422.2	7,310.9	147.5	148.0	120.79	-1,419.8	5,592.9	407.1	153.9	253.22	1.608		
13,300.0	7,105.2	13,522.2	7,312.6	150.0	150.5	120.79	-1,419.8	5,692.9	407.1	149.7	257.45	1.581		
13,400.0	7,107.0	13,622.2	7,314.4	152.4	152.9	120.79	-1,419.8	5,792.9	407.1	145.4	261.69	1.556		
13,500.0	7,108.7	13,722.2	7,316.1	154.9	155.4	120.79	-1,419.8	5,892.9	407.1	141.2	265.93	1.531		
13,600.0	7,110.5	13,822.2	7,317.9	157.3	157.8	120.79	-1,419.8	5,992.8	407.1	137.0	270.16	1.507		
13,700.0	7,112.2	13,922.2	7,319.6	159.8	160.2	120.79	-1,419.8	6,092.8	407.1	132.7	274.40	1.484 Level 3		
13,800.0	7,114.0	14,022.2	7,321.4	162.2	162.7	120.79	-1,419.8	6,192.8	407.1	128.5	278.64	1.461 Level 3		
13,900.0	7,115.7	14,122.2	7,323.1	164.7	165.1	120.79	-1,419.8	6,292.8	407.1	124.2	282.88	1.439 Level 3		
14,000.0	7,117.5	14,222.2	7,324.8	167.1	167.6	120.79	-1,419.8	6,392.8	407.1	120.0	287.12	1.418 Level 3		
14,100.0	7,119.2	14,322.2	7,326.6	169.6	170.0	120.79	-1,419.8	6,492.8	407.1	115.8	291.36	1.397 Level 3		
14,200.0	7,120.9	14,422.2	7,328.3	172.0	172.5	120.79	-1,419.8	6,592.8	407.1	111.5	295.60	1.377 Level 3		
14,289.4	7,122.5	14,511.6	7,329.9	174.2	174.7	120.79	-1,419.8	6,682.2	407.1	107.7	299.39	1.360 Level 3, SF		

## Anticollision Report

<b>Company:</b>	EnCana Oil & Gas (USA) Inc	<b>Local Co-ordinate Reference:</b>	Well Billings 3G-18H
<b>Project:</b>	DJ Wattenberg	<b>TVD Reference:</b>	WELL @ 5159.0ft (Original Well Elev)
<b>Reference Site:</b>	S18-T3N-R68W (Billings)	<b>MD Reference:</b>	WELL @ 5159.0ft (Original Well Elev)
<b>Site Error:</b>	0.0ft	<b>North Reference:</b>	True
<b>Reference Well:</b>	Billings 3G-18H	<b>Survey Calculation Method:</b>	Minimum Curvature
<b>Well Error:</b>	0.0ft	<b>Output errors are at</b>	2.00 sigma
<b>Reference Wellbore</b>	Hz	<b>Database:</b>	USA EDM 5000 Multi Users DB
<b>Reference Design:</b>	Plan #1	<b>Offset TVD Reference:</b>	Offset Datum

Reference Depths are relative to WELL @ 5159.0ft (Original Well Elev)

Offset Depths are relative to Offset Datum

Central Meridian is -105.500000 °

Coordinates are relative to: Billings 3G-18H

Coordinate System is US State Plane 1983, Colorado Northern Zone

Grid Convergence at Surface is: 0.29°

