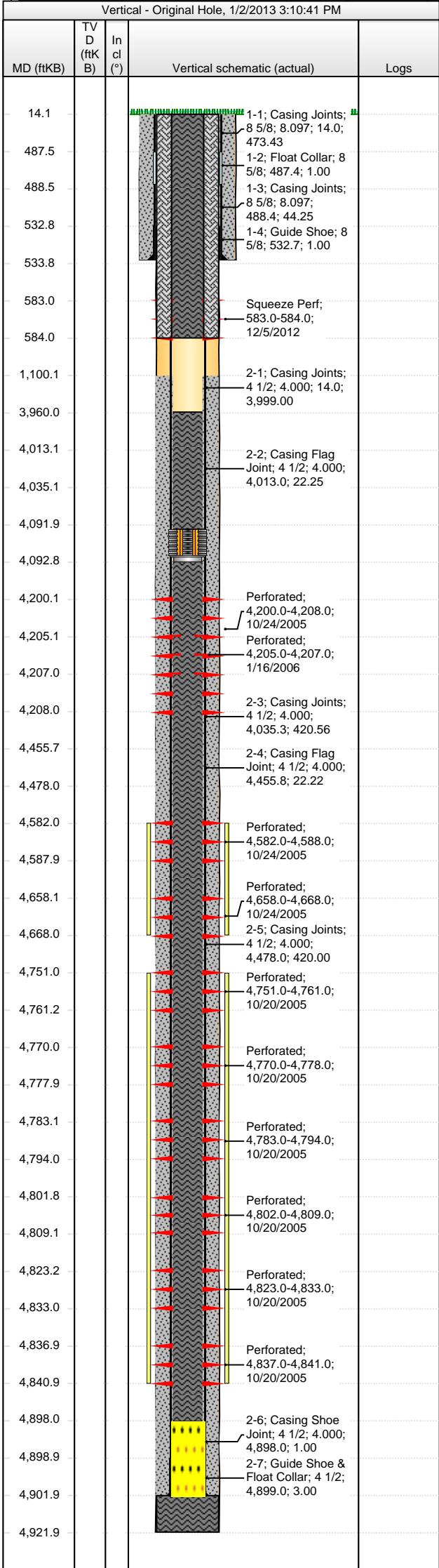




Lease Review All
Well Name: LION GOVERNMENT 11-26

API Number 0508107209	WPC ID 1CO073818	Well Permit Number	Field Name Hiawatha West	County Moffat	State CO
Well Configuration Type Vertical	Orig KB Elv (ft) 6,881.00	Ground Elevation (ft) 6,867.00	Casing Flange Elevation (ft)	Tubing Head Elevation (ft)	Total Depth (ftKB) 4,922.0
Original Spud Date 9/14/2005	Completion Date 1/16/2006	Asset Group Central Rockies Asset Group	Responsible Engineer Mike Stahl	N/S Dist (ft) 970.0 N/S Ref FNL	E/W Dist (ft) 882.0 E/W Ref FWL
Lot	Quarter 1 NW	Quarter 2 NW	Quarter 3	Quarter 4	Section 26
			Section Suffix	Section Type	Township 12 N
					Township N/S Dir N
					Range 101 W
					Range E/W Dir W
					Meridian



Wellbore Sections						
Wellbore Name			Start Date	Size (in)	Act Top (ftKB)	Act Btm (ftKB)
Original Hole			9/14/2005	12	14.0	533.7
Original Hole			9/15/2005	7 7/8	533.7	4,922.0
Surface Casing, 533.7ftKB						
OD (in)	Wt (lb/ft)	Grade	Top (ftKB)	Btm (ftKB)	Len (ft)	Item Des
8 5/8	24.00	J-55	14.0	487.4	473.43	Casing Joints
8 5/8			487.4	488.4	1.00	Float Collar
8 5/8	24.00	J-55	488.4	532.7	44.25	Casing Joints
8 5/8			532.7	533.7	1.00	Guide Shoe
Production Casing, 4,902.0ftKB						
OD (in)	Wt (lb/ft)	Grade	Top (ftKB)	Btm (ftKB)	Len (ft)	Item Des
4 1/2	11.60	N-80	14.0	4,013.0	3,999.00	Casing Joints
4 1/2	11.60	N-80	4,013.0	4,035.3	22.25	Casing Flag Joint
4 1/2	11.60	N-80	4,035.3	4,455.8	420.56	Casing Joints
4 1/2	11.60	N-80	4,455.8	4,478.0	22.22	Casing Flag Joint
4 1/2	11.60	N-80	4,478.0	4,898.0	420.00	Casing Joints
4 1/2	11.60	N-80	4,898.0	4,899.0	1.00	Casing Shoe Joint
4 1/2			4,899.0	4,902.0	3.00	Guide Shoe & Float Collar
Cement Stages						
Des		Pump Start Date	Drill Out Date	Top (ftKB)	Btm (ftKB)	Top Meas Meth
Surface Casing Cement		9/15/2005		14.0	533.7	
Production Casing Cement		10/10/2005		1,100.0	4,902.0	
Cement below shoe		10/10/2005		4,902.1	4,922.0	
Cement Plug		12/4/2012		3,960.0	4,092.0	
Cement Plug		12/4/2012		4,093.0	4,898.0	
Cement Plug		12/5/2012		14.0	584.0	
Cement Plug		12/5/2012		14.0	584.0	
Perforations						
Type of Hole	Date	Top (ftKB)	Btm (ftKB)	Zone		
Squeeze Perf	12/5/2012	583.0	584.0			
Perforated	10/24/2005	4,200.0	4,208.0	Ft Union, Original Hole		
Perforated	1/16/2006	4,205.0	4,207.0	Tubing, Original Hole		
Perforated	10/24/2005	4,582.0	4,588.0	Lwr Ft Union SS, Original Hole		
Perforated	10/24/2005	4,658.0	4,668.0	Base Ft Union, Original Hole		
Perforated	10/20/2005	4,751.0	4,761.0	Mdl Lewis SS, Original Hole		
Perforated	10/20/2005	4,770.0	4,778.0	Mdl Lewis SS, Original Hole		
Perforated	10/20/2005	4,783.0	4,794.0	Mdl Lewis SS, Original Hole		
Perforated	10/20/2005	4,802.0	4,809.0	Mdl Lewis SS, Original Hole		
Perforated	10/20/2005	4,823.0	4,833.0	Mdl Lewis SS, Original Hole		
Perforated	10/20/2005	4,837.0	4,841.0	Mdl Lewis SS, Original Hole		
Stim/Treat Stages						
Stage Type	Start Date	Top (ftKB)	Btm (ftKB)	Stim/Treat Fluid		Vol Clean Pump (bbl)
Frac	10/24/2005	4,751.0	4,841.0	135,437# 20/40 white, sand		
Frac	10/24/2005	4,582.0	4,668.0	37,538# 20/40 white, sand		
Tubing - Production set at 4,740.0ftKB on 12/27/2005 14:00						
Set Depth (ftKB)	Comment			Run Date	Pull Date	
4,740.0				12/27/2005	12/4/2012	
Item Des		OD (in)	ID (in)	Len (ft)	Top (ftKB)	Btm (ftKB)
Tubing		2 3/8	1.995	4.00	10.5	14.5
Tubing		2 3/8	1.995	4,187.30	14.5	4,201.8
API Seating Nipple		2 3/8	1.780	1.00	4,201.8	4,202.8
Tubing, with perms		2 3/8	1.995	8.00	4,202.8	4,210.8
Tubing		2 3/8	1.995	483.90	4,210.8	4,694.7
NoGo Blanking Plug		2 3/8	1.781	1.00	4,694.7	4,695.7
Profile Nipple R nipple 1.78"		2 3/8		1.00	4,695.7	4,696.7
Tubing		2 3/8	1.995	32.26	4,696.7	4,729.0
Packer - 2 cup		4	1.990	1.50	4,729.0	4,730.5
Tubing		2 3/8	1.995	8.00	4,730.5	4,738.5
Vortex DX1 Tool		2 3/8		1.25	4,738.5	4,739.8
Notched Collar		2 3/8		0.25	4,739.8	4,740.0
<des> on <dtmrun>						
Rod Description			Run Date		Pull Date	
Item Des			OD (in)	Len (ft)	Top (ftKB)	Btm (ftKB)
Other String Components						
Item Des		OD (in)	Len (ft)		Top (ftKB)	Btm (ftKB)



Lease Review All
Well Name: LION GOVERNMENT 11-26

API Number	WPC ID	Well Permit Number	Field Name	County	State
0508107209	1CO073818		Hiawatha West	Moffat	CO
Well Configuration Type	Orig KB Elv (ft)	Ground Elevation (ft)	Casing Flange Elevation (ft)	Tubing Head Elevation (ft)	Total Depth (ftKB)
Vertical	6,881.00	6,867.00			4,922.0
Original Spud Date	Completion Date	Asset Group	Responsible Engineer	N/S Dist (ft)	N/S Ref
9/14/2005	1/16/2006	Central Rockies Asset Group	Mike Stahl	970.0	FNL
				E/W Dist (ft)	E/W Ref
				882.0	FWL
Lot	Quarter 1	Quarter 2	Quarter 3	Quarter 4	Section
	NW	NW			26
			Section Suffix	Section Type	Township
					12 N
				Range	Range E/W Dir
				101	W
					Meridian

Vertical - Original Hole, 1/2/2013 3:10:42 PM					Other In Hole					
MD (ftKB)	TV D (ftKB)	In cl (°)	Vertical schematic (actual)	Logs	Des	OD (in)	Run Date	Pull Date	Top (ftKB)	Btm (ftKB)
					CICR	4	12/4/2012		4,092.0	4,093.0
					Bumper Spring w/SV in place	1.87	2/28/2006	6/12/2006	4,201.0	4,203.0
					Bridge Plug - Temporary	3.6	10/24/2005	11/8/2005	4,685.0	4,687.0
					Blanking plug	1.781	6/12/2006	12/4/2012	4,695.0	4,696.0
					Fill	4	12/22/2005		4,898.0	4,902.0
Bottom Hole Cores										
Date		Core #		Top (ftKB)		Btm (ftKB)		Recov (ft)		
14.1			1-1; Casing Joints; 8 5/8; 8.097; 14.0; 473.43							
487.5			1-2; Float Collar; 8 5/8; 487.4; 1.00							
488.5			1-3; Casing Joints; 8 5/8; 8.097; 488.4; 44.25							
532.8			1-4; Guide Shoe; 8 5/8; 532.7; 1.00							
533.8										
583.0			Squeeze Perf; 583.0-584.0; 12/5/2012							
584.0										
1,100.1			2-1; Casing Joints; 4 1/2; 4.000; 14.0; 3,999.00							
3,960.0										
4,013.1			2-2; Casing Flag Joint; 4 1/2; 4.000; 4,013.0; 22.25							
4,035.1										
4,091.9										
4,092.8										
4,200.1			Perforated; 4,200.0-4,208.0; 10/24/2005							
4,205.1			Perforated; 4,205.0-4,207.0; 1/16/2006							
4,207.0										
4,208.0			2-3; Casing Joints; 4 1/2; 4.000; 4,035.3; 420.56							
4,455.7			2-4; Casing Flag Joint; 4 1/2; 4.000; 4,455.8; 22.22							
4,478.0										
4,582.0			Perforated; 4,582.0-4,588.0; 10/24/2005							
4,587.9										
4,658.1			Perforated; 4,658.0-4,668.0; 10/24/2005							
4,668.0			2-5; Casing Joints; 4 1/2; 4.000; 4,478.0; 420.00							
4,751.0			Perforated; 4,751.0-4,761.0; 10/20/2005							
4,761.2										
4,770.0			Perforated; 4,770.0-4,778.0; 10/20/2005							
4,777.9										
4,783.1			Perforated; 4,783.0-4,794.0; 10/20/2005							
4,794.0										
4,801.8			Perforated; 4,802.0-4,809.0; 10/20/2005							
4,809.1										
4,823.2			Perforated; 4,823.0-4,833.0; 10/20/2005							
4,833.0										
4,836.9			Perforated; 4,837.0-4,841.0; 10/20/2005							
4,840.9										
4,898.0			2-6; Casing Shoe Joint; 4 1/2; 4.000; 4,898.0; 1.00							
4,898.9			2-7; Guide Shoe & Float Collar; 4 1/2; 4,899.0; 3.00							
4,901.9										
4,921.9										