

1625 Broadway  
Suite 2000  
Denver, CO 80202  
  
Tel: 303.228.4000  
Fax: 303.228.4280  
www.nobleenergyinc.com



January 24, 2013

Colorado Oil and Gas Conservation Commission  
The Chancery Building  
1120 Lincoln Street, Suite 801  
Denver, CO 80203  
Attn: Mr. Matt Lepore, Director

RE: WELLS RANCH USX AA13-65-1HN  
Niobrara New Drill  
Township 6 North, Range 63 West, 6th P.M.  
Section 18: NW/4SW/4: 1384' FSL & 65' FWL (Surface Location)  
Section 13: NE/4SE/4: 2281' FSL & 724' FEL (Beginning of Lateral)  
Section 14: NE/4SE/4: 2280' FSL & 205' FEL (Bottom Hole Location)  
Weld County, Colorado

Dear Director:

Noble Energy, Inc. ("NEI") is planning to drill the captioned boundary well in accordance with the provisions of COGCC Rule 318A.e.

NEI's proposed wellbore spacing unit consists of the S/2N/2, N/2S/2 of Section 13 and the SE/4NE/4, NE/4SE/4 of Section 14, T6N, R63W, creating a 400-acre wellbore spacing unit for the Niobrara formation. NEI is the only owner within the proposed wellbore spacing unit, therefore NEI hereby attests that no notice letters are required under COGCC Rule 318A(l).e.(6).

Enclosed are copies of the following documents to assist you in your review and approval of NEI's proposed APD for the captioned well:

- Map & plat illustrating proposed wellbore spacing unit.

Thank you for your attention to the enclosed. NEI respectfully requests that the COGCC review the enclosed information and approve the Application for Permit to Drill the captioned well.

Sincerely,

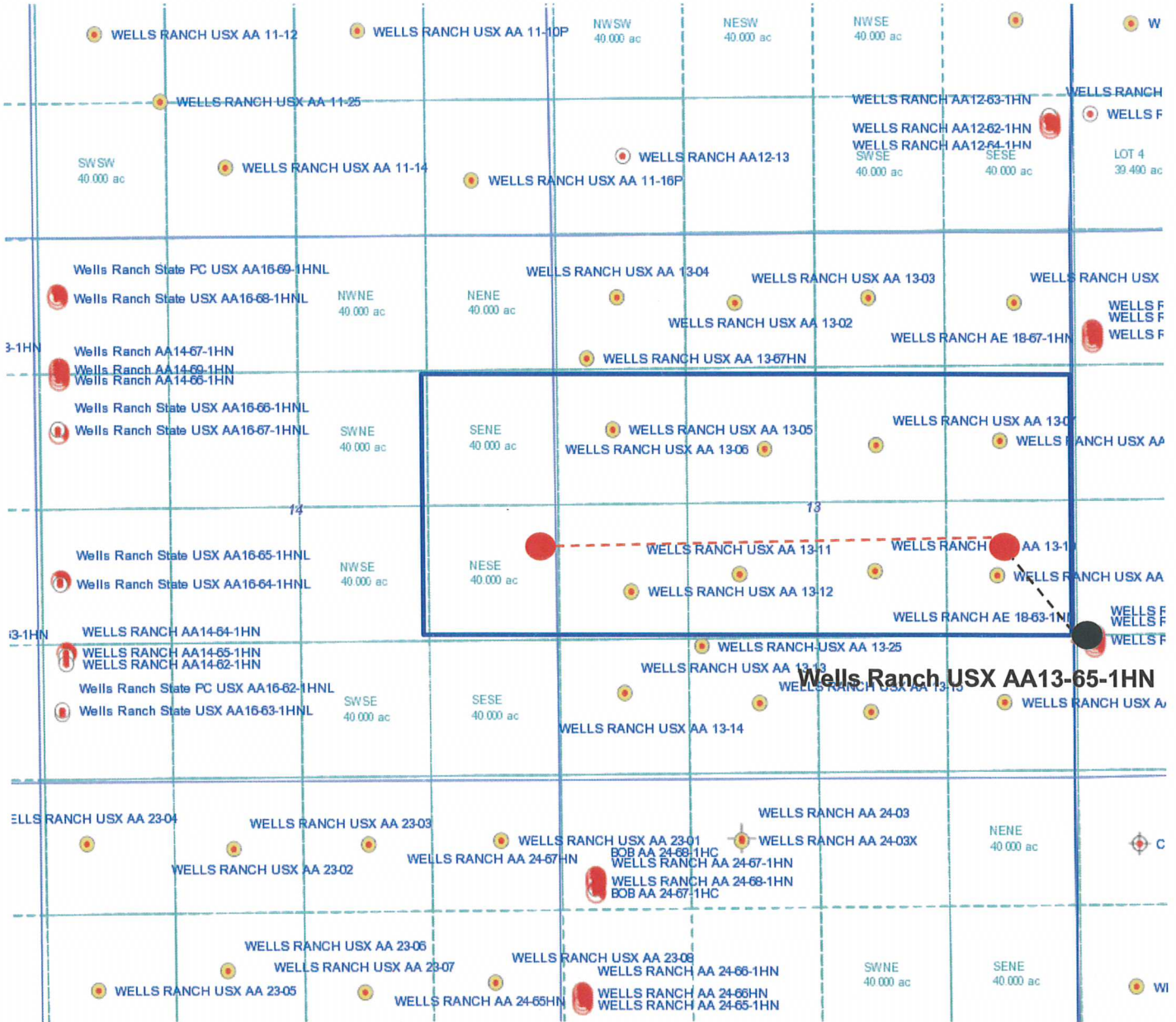
A handwritten signature in blue ink that reads 'Mari Clark'.

Mari Clark  
Regulatory Analyst II  
Noble Energy Inc.

# Wells Ranch USX AA13-65-1HN

Proposed Spacing Unit – Noble Energy, Inc

S/2N/2, N/2S/2 Section 13, Township 6 North, Range 63 West  
SE/4NE/4, NE/4SE/4 Section 14, Township 6 North, Range 63 West



Wells Ranch USX AA13-65-1HN

### Legend



Proposed 401.46 acre spacing unit



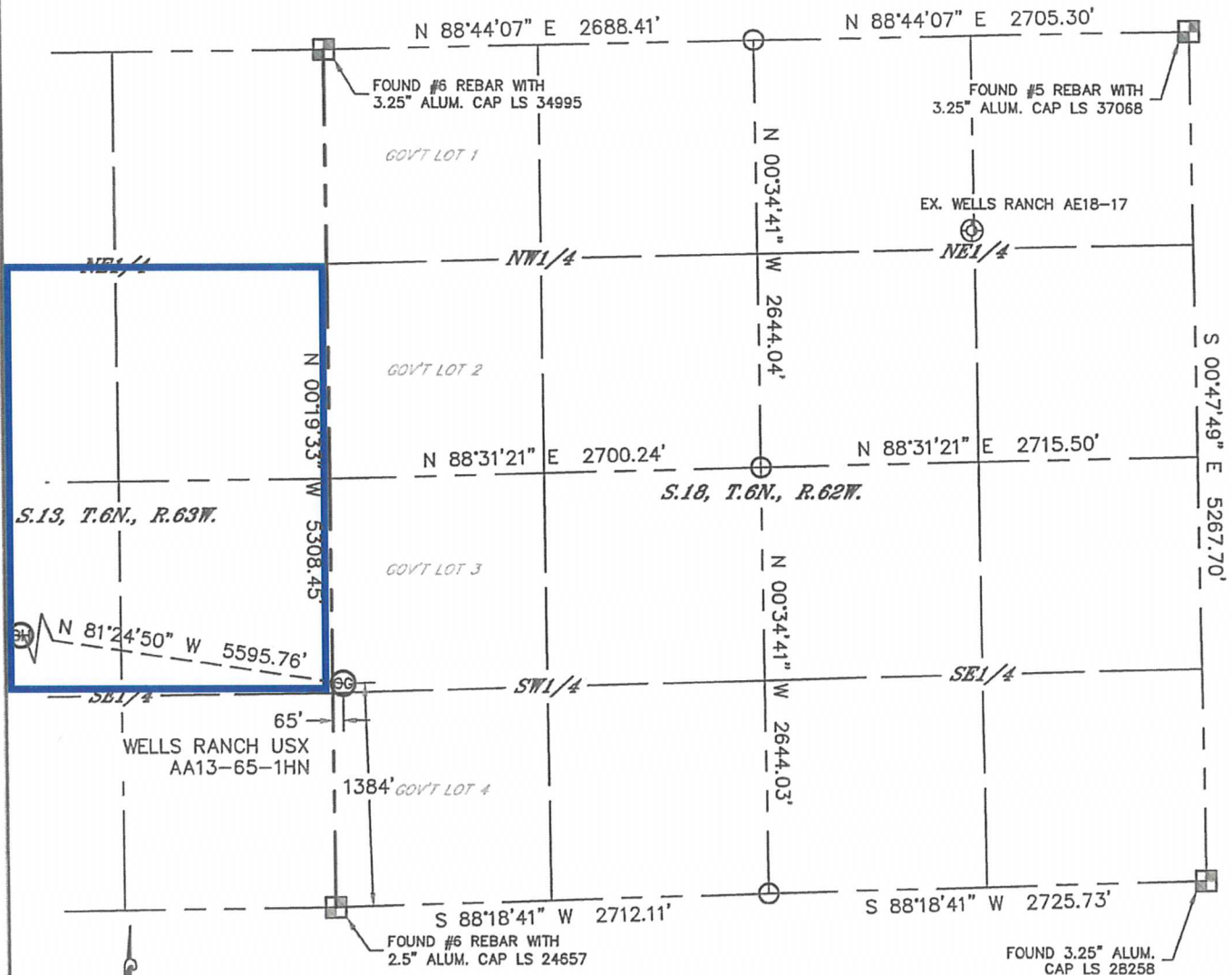
Bottom Hole Location

Lat40°, Inc. 1635 Foxtrail Drive, Suite 325 Loveland, CO 970-776-3321

# WELL LOCATION CERTIFICATE

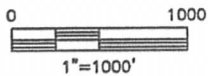
THIS MAP DOES NOT REPRESENT A BOUNDARY SURVEY

SECTION: 18  
TOWNSHIP: 6N  
RANGE: 62W



In accordance with a request from Brian James with Noble Energy Inc., Lat40°, Inc. has determined the surface location of the WELLS RANCH USX AA13-65-1HN to be 1384' from the SOUTH line and 65' from the WEST line as measured at right angles from the section lines of Section 18, Township 6 North, Range 62 West and the bottom hole to be 2280' from the SOUTH line and 205' from the EAST line as measured at right angles from the section lines of Section 14, Township 6 North, Range 63 West of the Sixth Principal Meridian, County of Weld, State of Colorado.

I hereby state that this Well Location Certificate was prepared by me, or under my direct supervision, that the fieldwork was completed on 6/26/2012, for and on behalf of Noble Energy Inc. That this is not a Land Survey Plat or an Improvement Survey Plat, and that it is not to be relied upon for establishment of fence, building, or other future improvement lines.



**NOTE:**

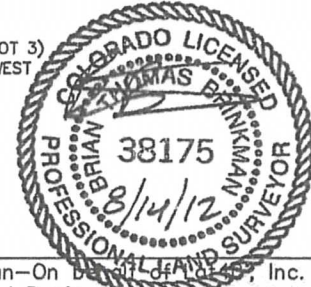
- 1) Bearings shown are Grid Bearings of the Colorado State Plane Coordinate System, North Zone, North American Datum 1983/2007. The lineal dimensions as contained herein are based upon the "U.S. Survey Foot."
- 2) Ground elevations are based on an observed GPS elevation (NAVD 1988 DATUM).
- 3) NEAREST EXISTING WELL: WELLS RANCH AE18-17, 4846'
- 4) IMPROVEMENTS: See LOCATION DRAWING for all visible Improvements within 400' of disturbed area.
- 5) SURFACE USE: RANGELAND
- 6) INSTRUMENT OPERATOR: ADAM KELLY

**SURFACE LOCATION**

LAT: 40.48306N  
LONG: 104.37517W  
PDOP: 2.1  
ELEV: 4831'  
1/4,1/4: NW1/4SW1/4 (GOV'T LOT 3)  
NEAREST PROPERTY LINE: 65' WEST

**BOTTOM HOLE**

LAT: 40.48555N  
LONG: 104.39502W



**LEGEND**

- = ALIQUOT MONUMENT AS DESCRIBED
- = CALCULATED POSITION

**SHEET 1 OF 3**

Brian T. Brinkman-On Behalf of Lat40°, Inc.  
Colorado Licensed Professional Land Surveyor No. 38175  
DATE: 8/14/2012  
PROJECT#: 2012094

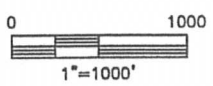
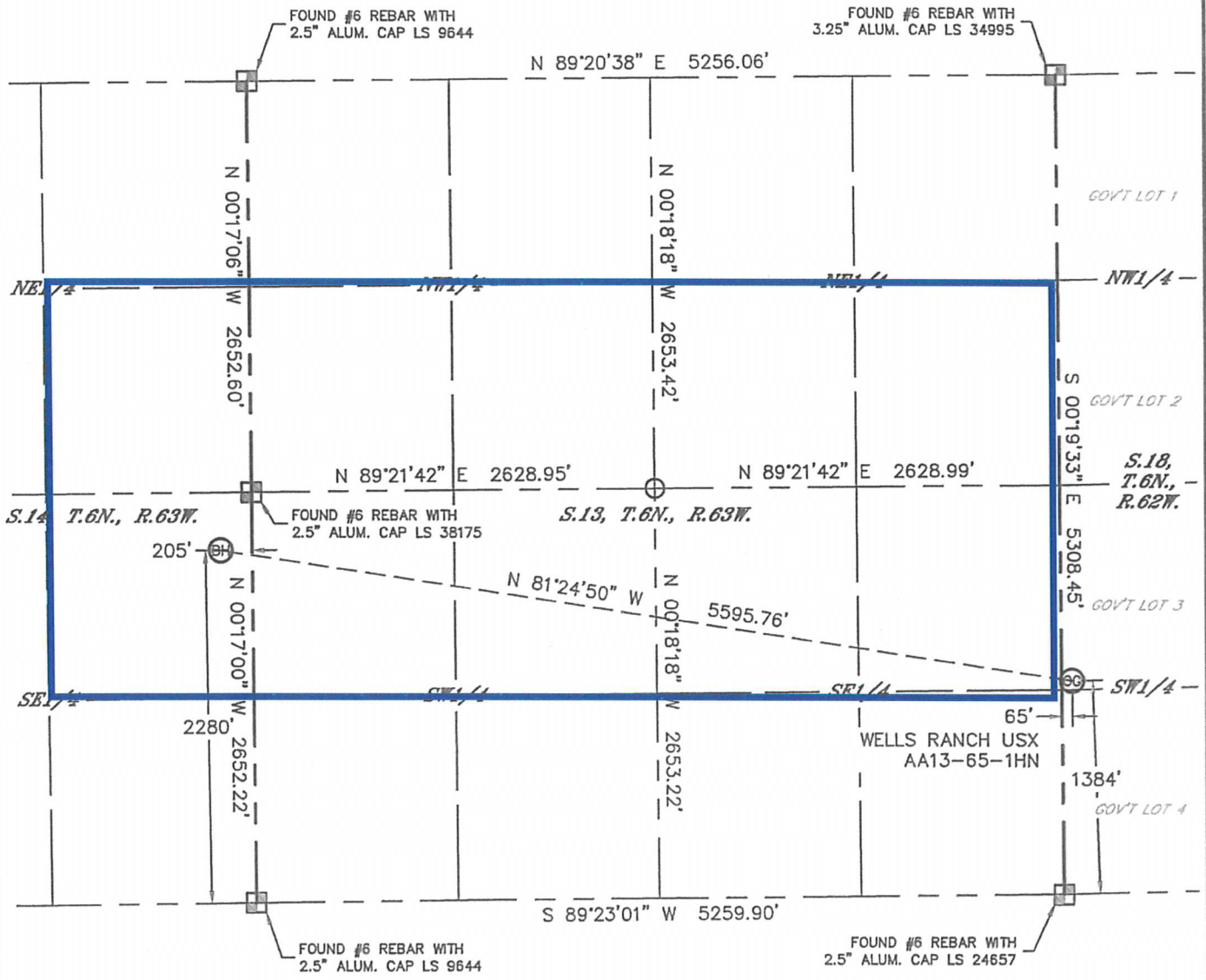
**NOTE**  
According to Colorado law, you must commence any legal action based upon any defect in this W.L.C. within three years after you discover such defect. In no event, may any action based upon any defect in this survey be commenced more than ten years after the date of the certificate shown hereon. (13-80-105 C.R.S.)

Lat40°, Inc. 1635 Foxtrail Drive, Suite 325 Loveland, CO 970-776-3321



# WELL LOCATION CERTIFICATE

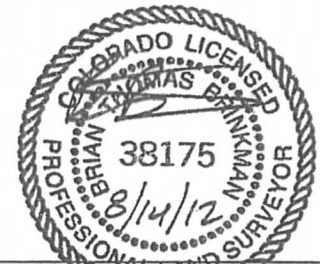
THIS MAP DOES NOT REPRESENT A BOUNDARY SURVEY

SECTION: 18  
TOWNSHIP: 6N  
RANGE: 62W



**NOTE**  
 According to Colorado law, you must commence any legal action based upon any defect in this W.L.C. within three years after you discover such defect. In no event, may any action based upon any defect in this survey be commenced more than ten years after the date of the certificate shown hereon. (13-80-105 C.R.S.)

- LEGEND**
-  = ALIQUOT MONUMENT AS DESCRIBED
  -  = CALCULATED POSITION



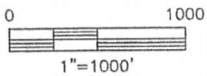
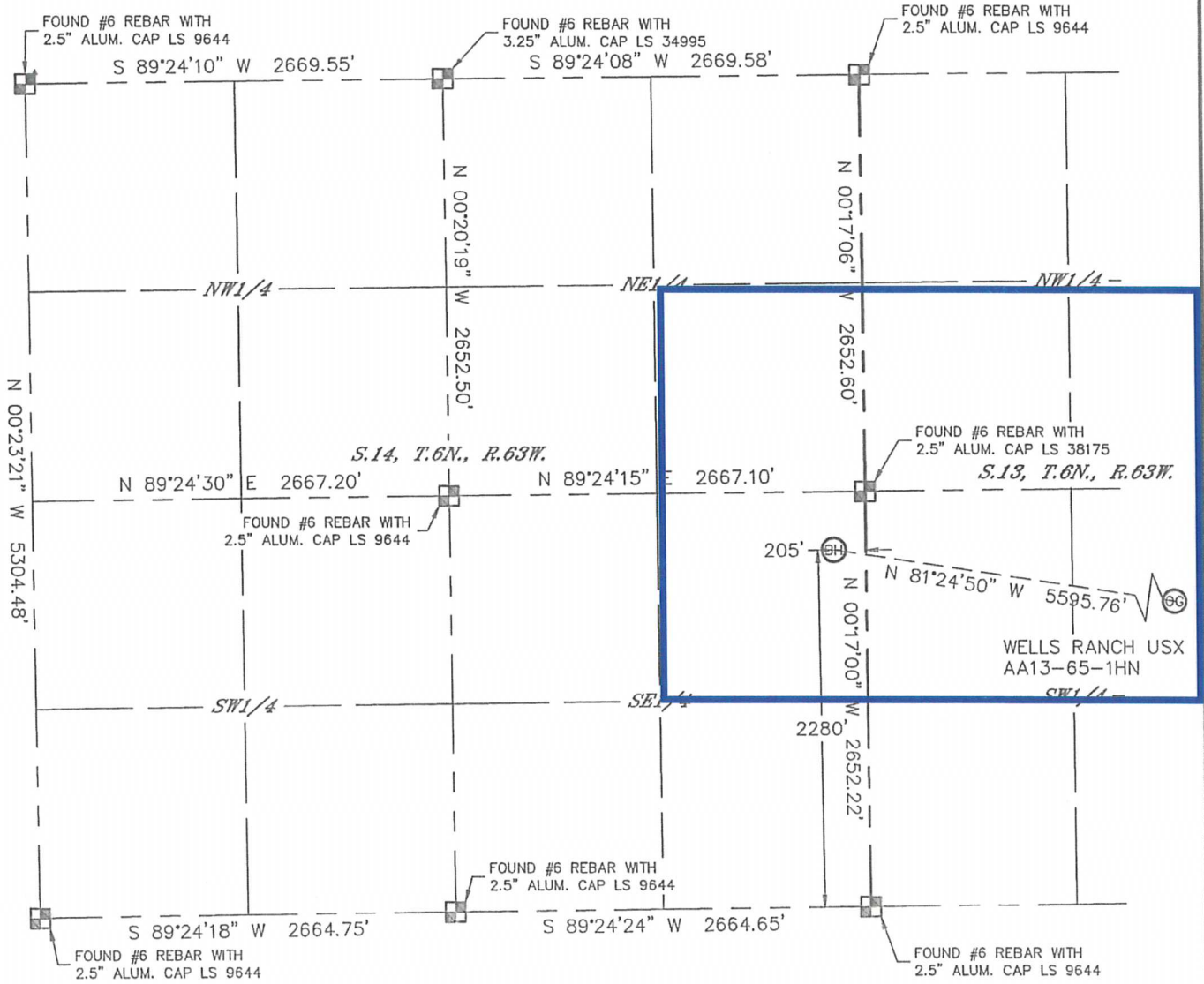
**SHEET 2 OF 3**  
 Brian T. Brinkman—On Behalf of Lat40°, Inc.  
 Colorado Licensed Professional Land Surveyor No. 38175  
 DATE: 8/14/2012  
 PROJECT#: 2012094

Lat40°, Inc. 1635 Foxtrail Drive, Suite 325 Loveland, CO 970-776-3321

# WELL LOCATION CERTIFICATE

THIS MAP DOES NOT REPRESENT A BOUNDARY SURVEY



SECTION: 18  
TOWNSHIP: 6N  
RANGE: 62W

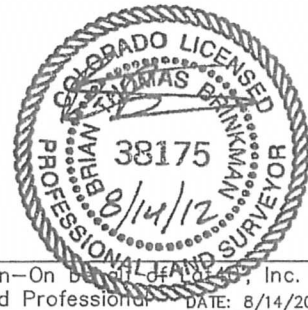


**NOTE**

According to Colorado law, you must commence any legal action based upon any defect in this W.L.C. within three years after you discover such defect. In no event, may any action based upon any defect in this survey be commenced more than ten years after the date of the certificate shown hereon. (13-80-105 C.R.S.)

**LEGEND**

-  = ALIQUOT MONUMENT AS DESCRIBED
-  = CALCULATED POSITION



*SHEET 3 OF 3*

Brian T. Brinkman—On Behalf of Lat40°, Inc.  
Colorado Licensed Professional Land Surveyor No. 38175  
DATE: 8/14/2012  
PROJECT#: 2012094