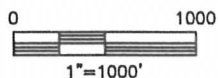
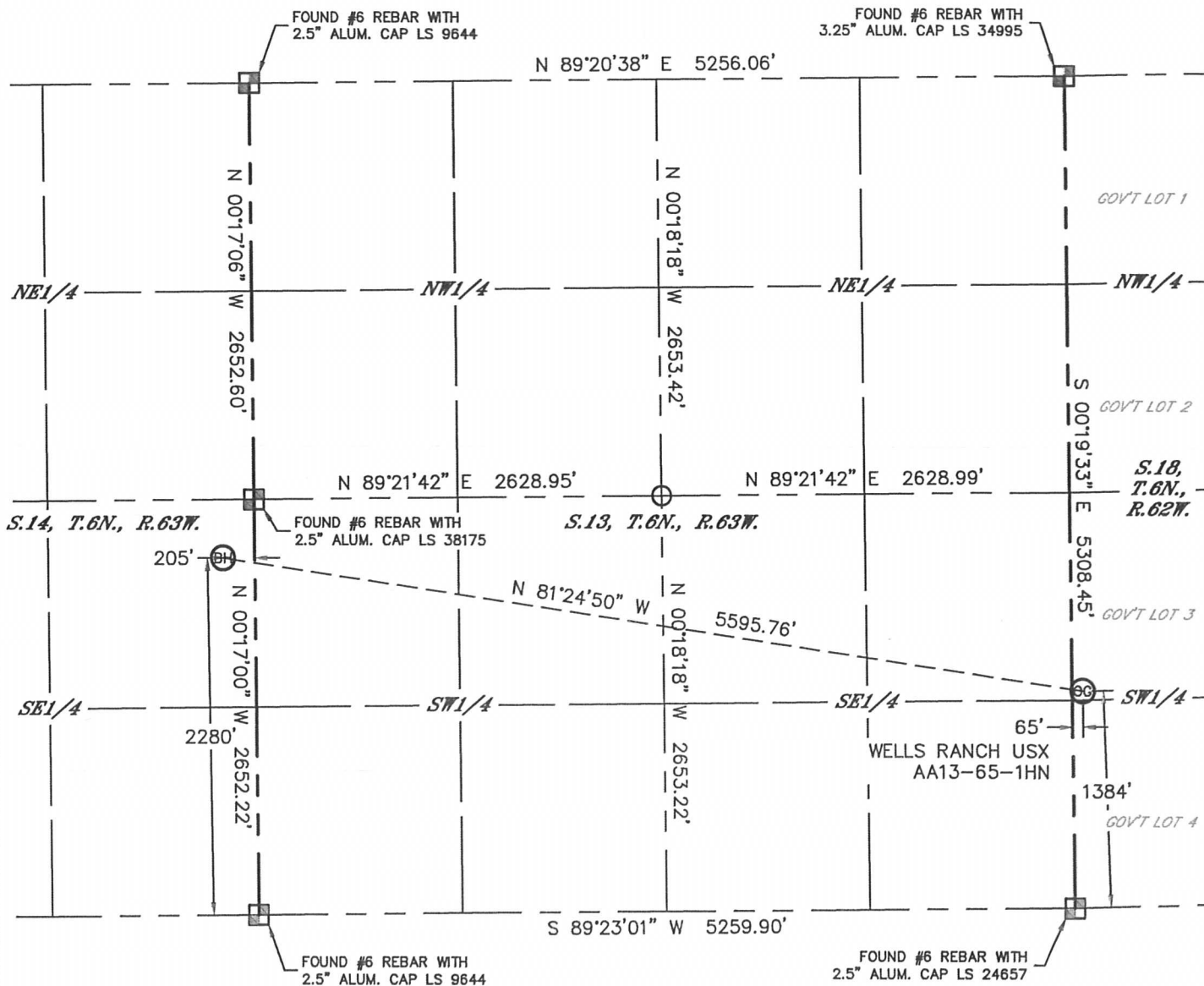




# WELL LOCATION CERTIFICATE

THIS MAP DOES NOT REPRESENT A BOUNDARY SURVEY

SECTION: 18  
TOWNSHIP: 6N  
RANGE: 62W

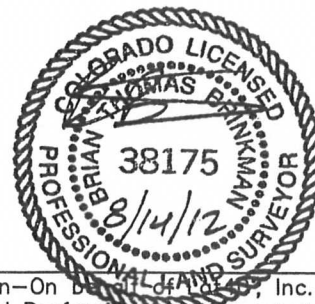


**NOTE**

According to Colorado law, you must commence any legal action based upon any defect in this W.L.C. within three years after you discover such defect. In no event, may any action based upon any defect in this survey be commenced more than ten years after the date of the certificate shown hereon. (13-80-105 C.R.S.)

**LEGEND**

- = ALIQUOT MONUMENT AS DESCRIBED
- = CALCULATED POSITION



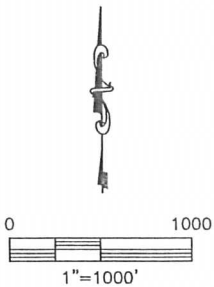
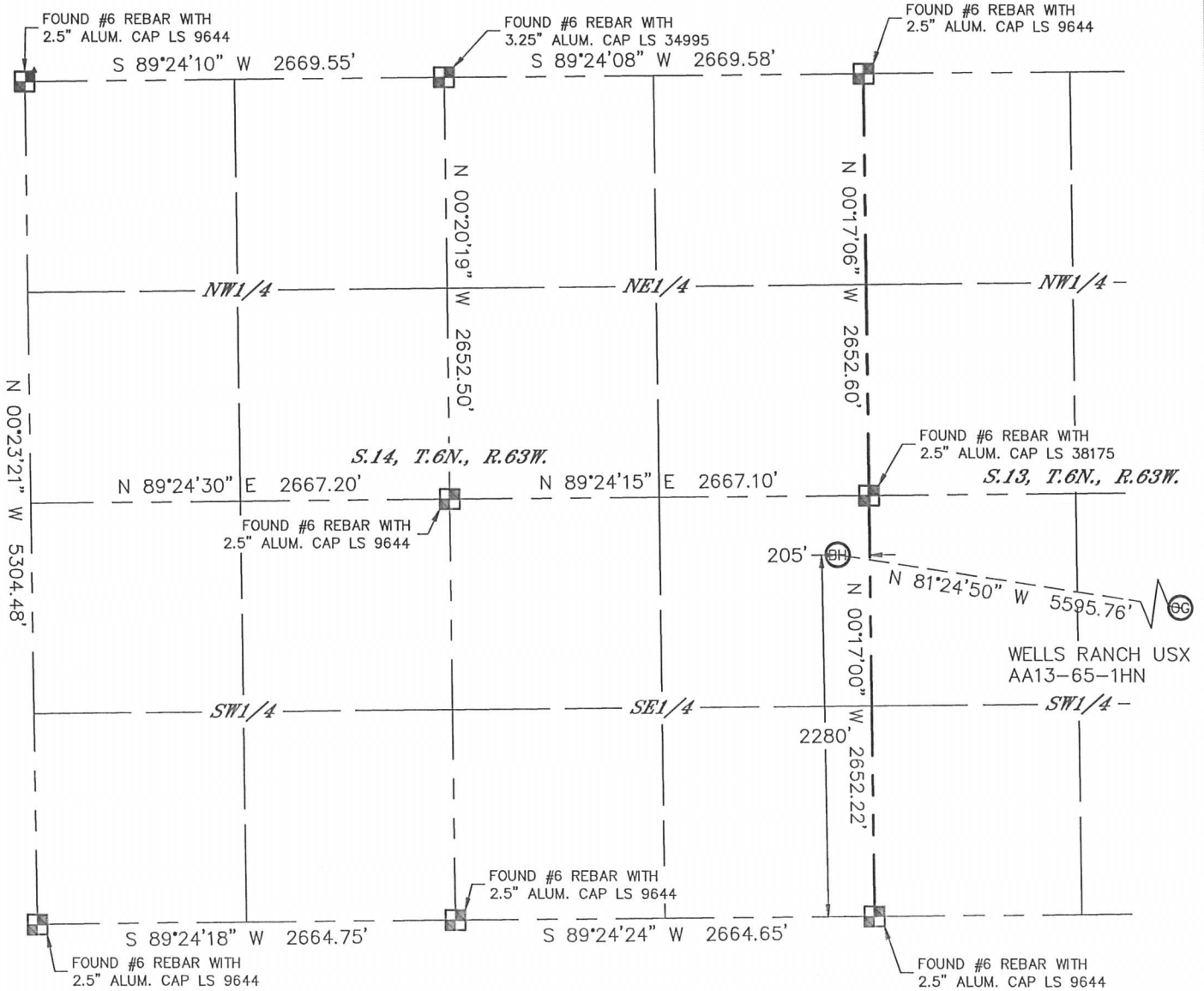
**SHEET 2 OF 3**

Brian T. Brinkman—On Demand Land Survey, Inc.  
Colorado Licensed Professional Land Surveyor No. 38175  
DATE: 8/14/2012  
PROJECT#: 2012094

# WELL LOCATION CERTIFICATE

THIS MAP DOES NOT REPRESENT A BOUNDARY SURVEY



SECTION: 18  
TOWNSHIP: 6N  
RANGE: 62W



## NOTE

According to Colorado law, you must commence any legal action based upon any defect in this W.L.C. within three years after you discover such defect. In no event, may any action based upon any defect in this survey be commenced more than ten years after the date of the certificate shown hereon. (13-80-105 C.R.S.)

## LEGEND

-  = ALIQUOT MONUMENT AS DESCRIBED
-  = CALCULATED POSITION

## SHEET 3 OF 3

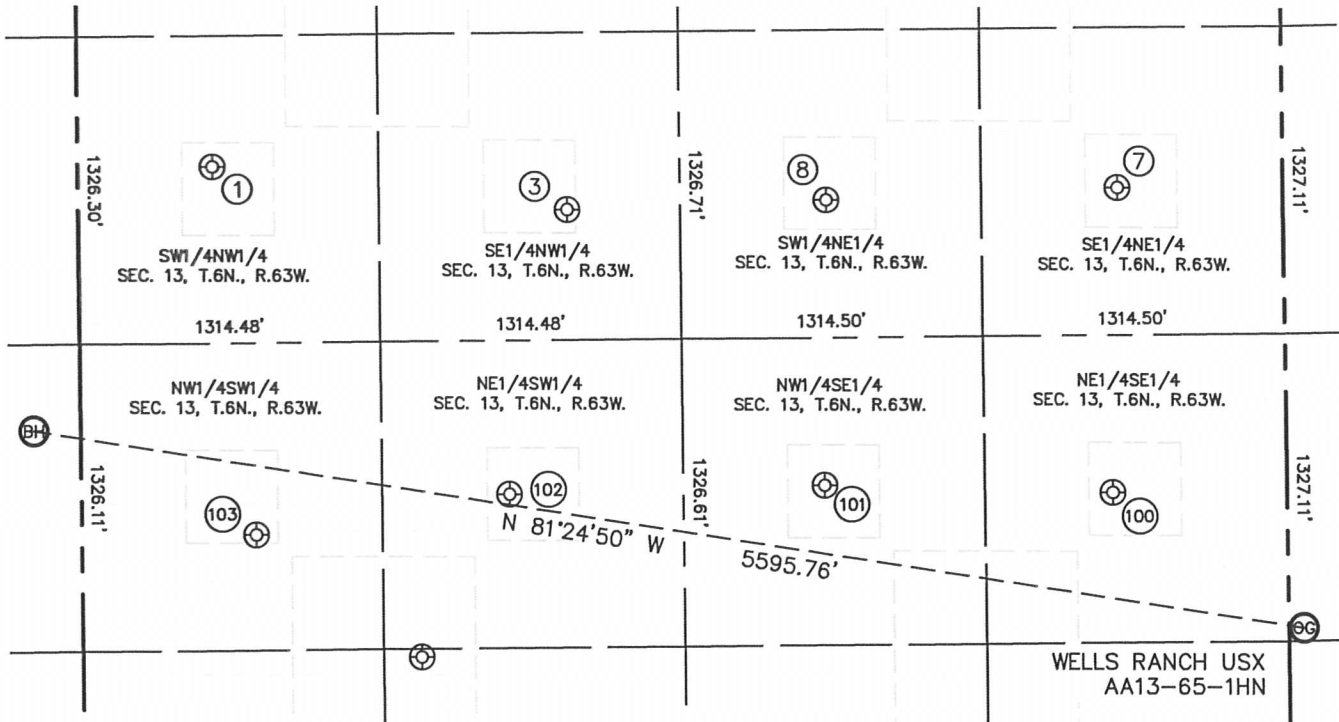
Brian T. Brinkman-On behalf of Lat40°, Inc.  
Colorado Licensed Professional Land Surveyor No. 38175  
DATE: 8/14/2012  
PROJECT#: 2012094



# SITE SKETCH

## WELLS RANCH USX AA13-65-1HN

SECTION: 18  
TOWNSHIP: 6N  
RANGE: 62W



①

WELLS RANCH USX  
AA13-05  
SW1/4NW1/4  
1892' FNL  
587' FWL  
LAT-40.48865°N  
LONG-104.39214°W  
PDOP: 1.1  
ELEV: 4832'

③

WELLS RANCH USX  
AA13-06  
SE1/4NW1/4  
2091' FNL  
2134' FWL  
LAT-40.48810°N  
LONG-104.38659°W  
PDOP: 1.2  
ELEV: 4798'

⑦

WELLS RANCH USX  
AA13-08  
SE1/4NE1/4  
2019' FNL  
719' FEL  
LAT-40.48829°N  
LONG-104.37794°W  
PDOP: 3.2  
ELEV: 4814'

⑧

WELLS RANCH USX  
AA13-07  
SW1/4NE1/4  
2060' FNL  
1990' FEL  
LAT-40.48818°N  
LONG-104.38251°W  
PDOP: 2.3  
ELEV: 4803'

⑩⑩

WELLS RANCH USX  
AA13-09  
NE1/4SE1/4  
1974' FSL  
755' FEL  
LAT-40.48468°N  
LONG-104.37810°W  
PDOP: 1.5  
ELEV: 4822'

⑩①

WELLS RANCH USX  
AA13-10  
NW1/4SE1/4  
2016' FSL  
2011' FEL  
LAT-40.48481°N  
LONG-104.38262°W  
PDOP: 1.4  
ELEV: 4808'

⑩②

WELLS RANCH USX  
AA13-11  
NE1/4SW1/4  
1990' FSL  
1869' FWL  
LAT-40.48474°N  
LONG-104.38757°W  
PDOP: 1.4  
ELEV: 4783'

⑩③

WELLS RANCH USX  
AA13-12  
NW1/4SW1/4  
1825' FSL  
761' FWL  
LAT-40.48429°N  
LONG-104.39156°W  
PDOP: 1.6  
ELEV: 4781'

