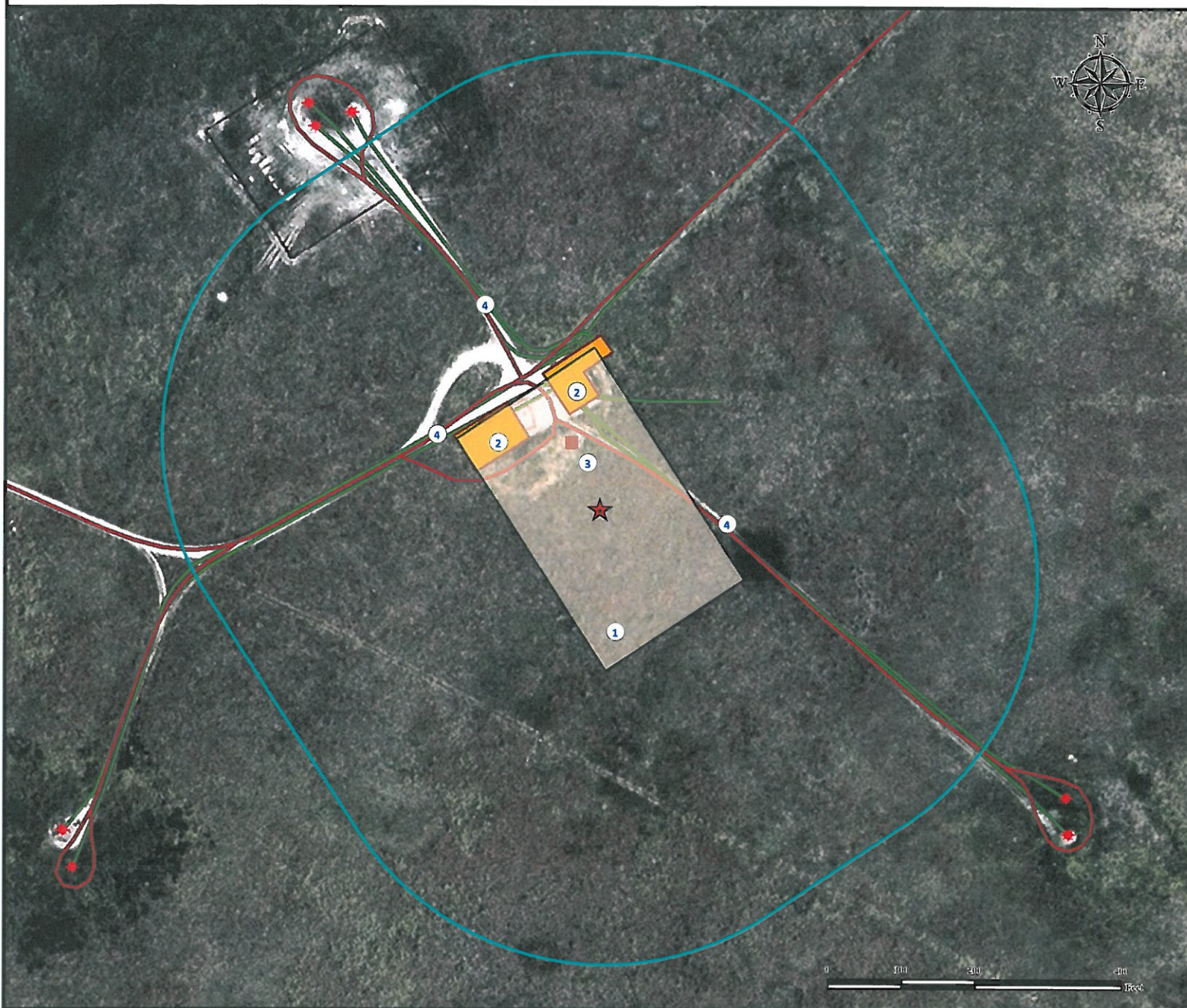


Location Drawing

ACCESS ROAD

USA FED 26C-36HZ FACILITY

SE¼ SE¼ SECTION 36, TOWNSHIP 3 NORTH, RANGE 66 WEST OF THE 6TH PRINCIPAL MERIDIAN



1. Proposed Facility USA FED 26C-36HZ FACILITY.
2. Existing facilities are $\pm 135'$ NW and $\pm 137'$ NW (To be removed).
3. Emissions control device is $\pm 97'$ NW (To be removed).
4. Private roads are $\pm 79'$ NE, $\pm 201'$ NW and $\pm 208'$ NW.

Legend

- | | | |
|--|---|--|
| ECD | Facilities Enclosure | Reference Point |
| Existing Well | Disturbance Area | Private Road |
| Proposed Facility | 400' Radius | Underground Pipeline |

Reference Location

** All Measurements are Made from Reference Point **
 Lat: 40.177717° Long: -104.720468° (NAD83)
 Elevation: 4980 Feet

FSL: 1102' FEL: 1298'



Use our resources to find yours!
www.petro-fs.com
 (303) 928-7128

Field Date: 09/28/2011
 Drafting Date: 09/30/2011
 Drafter: DMM
 Checked By: BHF

Data Sources:
 - Aerial courtesy of NAIP (2009)

Surface Use: Rangeland

Prepared for:



KERR-MCGEE OIL & GAS ONSHORE LP