
GUNNISON ENERGY CORP - EBUS

SPU Cockroft 1294-23-41D-H1R

WILD CAT

Delta County , Colorado

Plug Service - Whipstock

05-Dec-2012

Job Site Documents

The Road to Excellence Starts with Safety

Sold To #: 338641	Ship To #: 2943741	Quote #:	Sales Order #: 900053012
Customer: GUNNISON ENERGY CORP - EBUS	Customer Rep: Browning, Scott		
Well Name: SPU Cockroft	Well #: 1294-23-41D-H1R	API/UWI #: 05-029-06112	
Field: WILD CAT	City (SAP): CEDAREDDGE	County/Parish: Delta	State: Colorado
Lat: N 38.999 deg. OR N 38 deg. 59 min. 57.548 secs.		Long: W 107.859 deg. OR W -108 deg. 8 min. 28.09 secs.	
Contractor: WORKOVER	Rig/Platform Name/Num: WORKOVER		
Job Purpose: Plug Service - Whipstock			
Well Type: Development Well	Job Type: Plug Service - Whipstock		
Sales Person: HIMES, JEFFREY	Srvc Supervisor: ARNOLD, EDWARD	MBU ID Emp #: 439784	

Job Personnel

HES Emp Name	Exp Hrs	Emp #	HES Emp Name	Exp Hrs	Emp #	HES Emp Name	Exp Hrs	Emp #
ARNOLD, EDWARD John	14	439784	MILLER, KEVIN Paul	14	443040	ROSE, BENJAMIN Keith	14	487022
SALAZAR, PAUL Omar	14	445614	SINCLAIR, DAN J	14	338784			

Equipment

HES Unit #	Distance-1 way	HES Unit #	Distance-1 way	HES Unit #	Distance-1 way	HES Unit #	Distance-1 way
10564022	70 mile	10565341	70 mile	10871245	70 mile	10973571	70 mile
11259882	70 mile	11583915	70 mile	11808831	70 mile		

Job Hours

Date	On Location Hours	Operating Hours	Date	On Location Hours	Operating Hours	Date	On Location Hours	Operating Hours
12-4-2012	10	1	12-4-2012	4	4			

TOTAL Total is the sum of each column separately

Job				Job Times			
Formation Name				Date	Time	Time Zone	
Formation Depth (MD)	Top	Bottom		Called Out	04 - Dec - 2012	09:30	MST
Form Type	BHST			On Location	04 - Dec - 2012	14:00	MST
Job depth MD	8546. ft		Job Depth TVD	8546. ft	Job Started	04 - Dec - 2012	00:39
Water Depth			Wk Ht Above Floor	15. ft	Job Completed	05 - Dec - 2012	01:47
Perforation Depth (MD)	From	To		Departed Loc	05 - Dec - 2012	04:00	MST

Well Data

Description	New / Used	Max pressure psig	Size in	ID in	Weight lbm/ft	Thread	Grade	Top MD ft	Bottom MD ft	Top TVD ft	Bottom TVD ft
-------------	------------	-------------------	---------	-------	---------------	--------	-------	-----------	--------------	------------	---------------

Tools and Accessories

Type	Size	Qty	Make	Depth	Type	Size	Qty	Make	Depth	Type	Size	Qty	Make
Guide Shoe					Packer					Top Plug			
Float Shoe					Bridge Plug					Bottom Plug			
Float Collar					Retainer					SSR plug set			
Insert Float										Plug Container			
Stage Tool										Centralizers			

Miscellaneous Materials

Gelling Agt	Conc	Surfactant	Conc	Acid Type	Qty	Conc	%
Treatment Fld	Conc	Inhibitor	Conc	Sand Type	Size		Qty

Fluid Data

Stage/Plug #: 1									
Fluid #	Stage Type	Fluid Name	Qty	Qty uom	Mixing Density lbm/gal	Yield ft3/sk	Mix Fluid Gal/sk	Rate bbl/min	Total Mix Fluid Gal/sk

Stage/Plug #: 1									
Fluid #	Stage Type	Fluid Name	Qty	Qty uom	Mixing Density lbm/gal	Yield ft3/sk	Mix Fluid Gal/sk	Rate bbl/min	Total Mix Fluid Gal/sk

Stage/Plug #: 1									
1	TUNED SPACER III AHEAD	TUNED SPACER III - SBM (483826)	18.00	bbl	11.	.0	.0	4.0	
2	Plugcem	PLUGCEM (TM) SYSTEM (452969)	92.0	sacks	17.	1.31	4.6	4.0	4.6
4.6 Gal		FRESH WATER							
3	TUNED SPACER III BEHIND	TUNED SPACER III - SBM (483826)	7.00	bbl	11.	.0	.0	4	
4	Mud Displacement		69.00	bbl	8.33	.0	.0	4.0	
Calculated Values		Pressures		Volumes					
Displacement	68.9	Shut In: Instant		Lost Returns		Cement Slurry	21.6	Pad	
Top Of Cement		5 Min		Cement Returns		Actual Displacement	68.9	Treatment	
Frac Gradient		15 Min		Spacers	25	Load and Breakdown		Total Job	11.5
Rates									
Circulating	Rig	Mixing	4	Displacement	4	Avg. Job	4		
Cement Left in Pipe	Amount	0 ft	Reason	Shoe Joint					
Frac Ring # 1 @	ID	Frac ring # 2 @	ID	Frac Ring # 3 @	ID	Frac Ring # 4 @	ID		
The Information Stated Herein Is Correct				Customer Representative Signature					

The Road to Excellence Starts with Safety

Sold To #: 338641	Ship To #: 2943741	Quote #:	Sales Order #: 900053012
Customer: GUNNISON ENERGY CORP - EBUS		Customer Rep: Browning, Scott	
Well Name: SPU Cockroft	Well #: 1294-23-41D-H1R	API/UWI #: 05-029-06112	
Field: WILD CAT	City (SAP): CEDAREEDGE	County/Parish: Delta	State: Colorado
Legal Description:			
Lat: N 38.999 deg. OR N 38 deg. 59 min. 57.548 secs.		Long: W 107.859 deg. OR W -108 deg. 8 min. 28.09 secs.	
Contractor: WORKOVER		Rig/Platform Name/Num: WORKOVER	
Job Purpose: Plug Service - Whipstock			Ticket Amount:
Well Type: Development Well		Job Type: Plug Service - Whipstock	
Sales Person: HIMES, JEFFREY		Srv Supervisor: ARNOLD, EDWARD	MBU ID Emp #: 439784

Activity Description	Date/Time	Cht #	Rate bbl/ min	Volume bbl		Pressure psig		Comments
				Stage	Total	Tubing	Casing	
Call Out	12/04/2012 09:30							Crew called out for job.
Pre-Convoy Safety Meeting	12/04/2012 11:45							Discuss hazards and route to location.
Crew Leave Yard	12/04/2012 12:00							
Arrive At Loc	12/04/2012 14:00							Rig still going in hole.
Assessment Of Location Safety Meeting	12/04/2012 15:30							Water Test: PH 8, KCL 450, SO4 <200, FE 0 CALCIUM 120, CHLORIDES 0, TEMP 70, TDS 230.
Pre-Rig Up Safety Meeting	12/04/2012 15:45							Discuss hazards and plan for rig up.
Rig-Up Equipment	12/04/2012 16:00							1 Elite #8, 1 660 bulk truck, 1 hard line to floor, 1 hard line to pit, 1 line to upright, 1 line to mud tank.
Rig-Up Completed	12/04/2012 16:30							
Pre-Job Safety Meeting	12/05/2012 00:15							Including everyone on location. Discussed hazards, safety, and job procedure.
Start Job	12/05/2012 00:39							TD 8546, DP 6346 4" XT39 14#, 465 4 3/4" Drill Collar 2.313 ID, 1198 4" heavy Weight 2.56 ID, 536.78 2 7/8" DP, 7771 7" Intermediate 26#, OH 8 3/4" 7837, OH 6 1/8 8546 +25% excess. Well bore at 85-90 degrees.

Sold To #: 338641

Ship To #: 2943741

Quote #:

Sales Order #: 900053012

SUMMIT Version: 7.3.0045

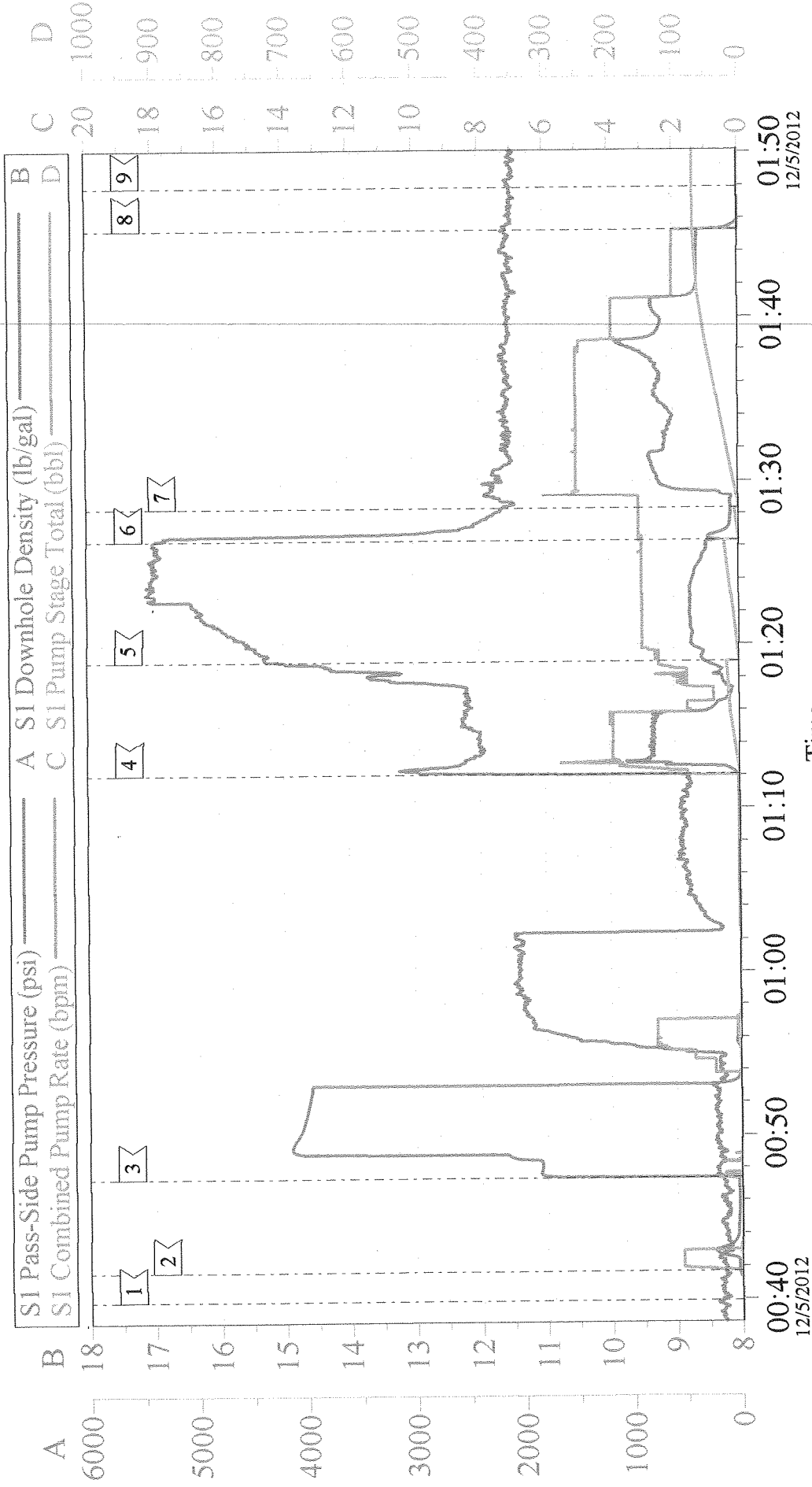
Wednesday, December 05, 2012 03:40:00

Cementing Job Log

Activity Description	Date/Time	Cht #	Rate bbl/ min	Volume bbl		Pressure psig		Comments
				Stage	Total	Tubing	Casing	
Pump Water	12/05/2012 00:41		2	2			250.0	Fill Lines with Fresh Water.
Test Lines	12/05/2012 00:47					4160.0		Good Test No Leaks.
Pump Spacer 1	12/05/2012 01:12		4	18.5			800.0	Tuned Spacer 12.4 ppg.
Pump Cement	12/05/2012 01:18		3	21.6			300.0	92 sks of Cement, 17 ppg, 1.31 cf3, 4.6 gal/sk.
Pump Spacer 1	12/05/2012 01:26		3	6.5			74.0	Tuned spacer behind, 12.4 ppg.
Pump Displacement	12/05/2012 01:28		5	68.9			720.0	Mud displacement to balance.
Shutdown	12/05/2012 01:45							Shut down and check for balance.
End Job	12/05/2012 01:47							End Job. 4 add hours for crew. No derrick charge.
Pre-Rig Down Safety Meeting	12/05/2012 01:50							Discussed hazards and safety.
Rig-Down Equipment	12/05/2012 02:00							
Rig-Down Completed	12/05/2012 03:30							
Pre-Convoy Safety Meeting	12/05/2012 03:45							Discussed hazards, safety and route.
Crew Leave Location	12/05/2012 04:00							
Other	12/05/2012 04:00							Thank You for using Halliburton, Ed Arnold and Crew.

GUNNISON ENERGY - SPU COCKROFT 1294-23-41D

KICK OFF PLUG



Local Event Log

1 START JOB	00:39:56	2 FILL LINES	00:41:43	3 TEST LINES	00:47:24
4 TUNED SPACER	01:12:03	5 CEMENT	01:18:58	6 TUNED SPACER	01:26:24
7 MUD DISPLACEMENT	01:28:19	8 SHUT DOWN	01:45:19	9 END JOB	01:47:54

Customer: GUNNISON ENERGY	Job Date: 04-Dec-2012	Sales Order #: 900053012
Well Description: SPU COCKROFT 1294-23-41D	Job Type: KICK OFF PLUG	ADC Used: YES
Company Rep: SCOTT BROWNING	Cement Supervisor: ED ARNOLD	Elite #8: PAUL SALAZAR