

---

# **GUNNISON ENERGY CORP - EBUS**

---

**SPU Cockcroft 1294 23-41D-H1R**

**WILD CAT**

**Delta County , Colorado**

## **Cement Surface Casing**

**20-Oct-2012**

### **Job Site Documents**

## The Road to Excellence Starts with Safety

Sold To #: 338641	Ship To #: 2943741	Quote #:	Sales Order #: 9899216
Customer: GUNNISON ENERGY CORP - EBUS	Customer Rep: BROWNING, SCOTT		
Well Name: SPU Cockcroft 1294	Well #: 23-41D-H1R	API/UWI #:	
Field: WILD CAT	City (SAP): CEDAREGE	County/Parish: Delta	State: Colorado
Contractor: H&P 273	Rig/Platform Name/Num: H&P 273		
Job Purpose: Cement Surface Casing			
Well Type: Development Well	Job Type: Cement Surface Casing		
Sales Person: PRUETT, BRADLEY	Srv Supervisor: CASTILLO, JAVIER	MBU ID Emp #:	513620

## Job Personnel

HES Emp Name	Exp Hrs	Emp #	HES Emp Name	Exp Hrs	Emp #	HES Emp Name	Exp Hrs	Emp #
BLANCHETTE, JAMES George	13	371360	BLUST, CHARLES Thomas	13	386662	BRENNECKE, ANDREW Bailey	13	486345
CASTILLO, JAVIER	13	513620				MILLER II, MATTHEW Reginald	13	425164
WOLFE, JON P	13	485217						

## Equipment

HES Unit #	Distance-1 way	HES Unit #	Distance-1 way	HES Unit #	Distance-1 way	HES Unit #	Distance-1 way
10011429	90 mile	10713212	90 mile	10951249	90 mile	11021972	90 mile
11027039	90 mile	11164590	90 mile	11223557	90 mile	11360871	90 mile

## Job Hours

Date	On Location Hours	Operating Hours	Date	On Location Hours	Operating Hours	Date	On Location Hours	Operating Hours
10/20/2012	13	2						

TOTAL 13 Total is the sum of each column separately

## Job

Formation Name	Formation Depth (MD)	Top	SURFACE	Bottom	2190	Called Out	Date	Time	Time Zone
Form Type			BHST		117 degF	On Location	20 - Oct - 2012	01:00	MST
Job depth MD	21900. ft		Job Depth TVD	21900. ft		Job Started	20 - Oct - 2012	11:06	MST
Water Depth			Wk Ht Above Floor	3. ft		Job Completed	20 - Oct - 2012	12:56	MST
Perforation Depth (MD)	From		To			Departed Loc	20 - Oct - 2012	13:30	MST

## Well Data

Description	New / Used	Max pressure psig	Size in	ID in	Weight lbm/ft	Thread	Grade	Top MD ft	Bottom MD ft	Top TVD ft	Bottom TVD ft
-------------	------------	-------------------	---------	-------	---------------	--------	-------	-----------	--------------	------------	---------------

Sales/Rental/3<sup>rd</sup> Party (HES)

Description	Qty	Qty uom	Depth	Supplier
PLUG,CMTG,TOP,9 5/8,HWE,8.16 MIN/9.06 MA	1	EA	2112.32	HES

## Tools and Accessories

Type	Size	Qty	Make	Depth	Type	Size	Qty	Make	Depth	Type	Size	Qty	Make
Guide Shoe					Packer					Top Plug	9.625	1	HES
Float Shoe	9.625	1		2196	Bridge Plug					Bottom Plug			
Float Collar	9.625	1		2112.32	Retainer					SSR plug set			
Insert Float										Plug Container	9.625	1	HES
Stage Tool										Centralizers			

## Miscellaneous Materials

Gelling Agt	Conc	Surfactant	Conc	Acid Type	Qty	Conc	%
Treatment Fld	Conc	Inhibitor	Conc	Sand Type	Size	Qty	

## Fluid Data

Stage/Plug #: 1	Fluid #	Stage Type	Fluid Name	Qty	Qty uom	Mixing Density lbm/gal	Yield ft <sup>3</sup> /sk	Mix Fluid Gal/sk	Rate bbl/min	Total Mix Fluid Gal/sk
-----------------	---------	------------	------------	-----	---------	------------------------	---------------------------	------------------	--------------	------------------------

1	Water Spacer		10.00	bbl	8.34	.0	.0	2	
2	EconoCem Lead Cement	ECONOCEM (TM) SYSTEM (452992)	405.0	sacks	12.3	2.33	12.62	5.5	12.62
3	HalCem Tail Cement	HALCEM (TM) SYSTEM (452986)	200.0	sacks	15.8	1.17	4.98	5	4.98
<b>Calculated Values</b>		<b>Pressures</b>		<b>Volumes</b>					
Displacement	160	Shut In: Instant		Lost Returns	NONE	Cement Slurry	209	Pad	
Top Of Cement	SURFACE	5 Min		Cement Returns	63	Actual Displacement	160	Treatment	
Frac Gradient		15 Min		Spacers	10	Load and Breakdown		Total Job	380
<b>Rates</b>									
Circulating	RIG	Mixing	5	Displacement	4	Avg. Job	4.5		
Cement Left In Pipe	Amount	84 ft	Reason	Shoe Joint					
Frac Ring # 1 @	ID	Frac ring # 2 @	ID	Frac Ring # 3 @	ID	Frac Ring # 4 @	ID		
The Information Stated Herein Is Correct				Customer Representative Signature					

## The Road to Excellence Starts with Safety

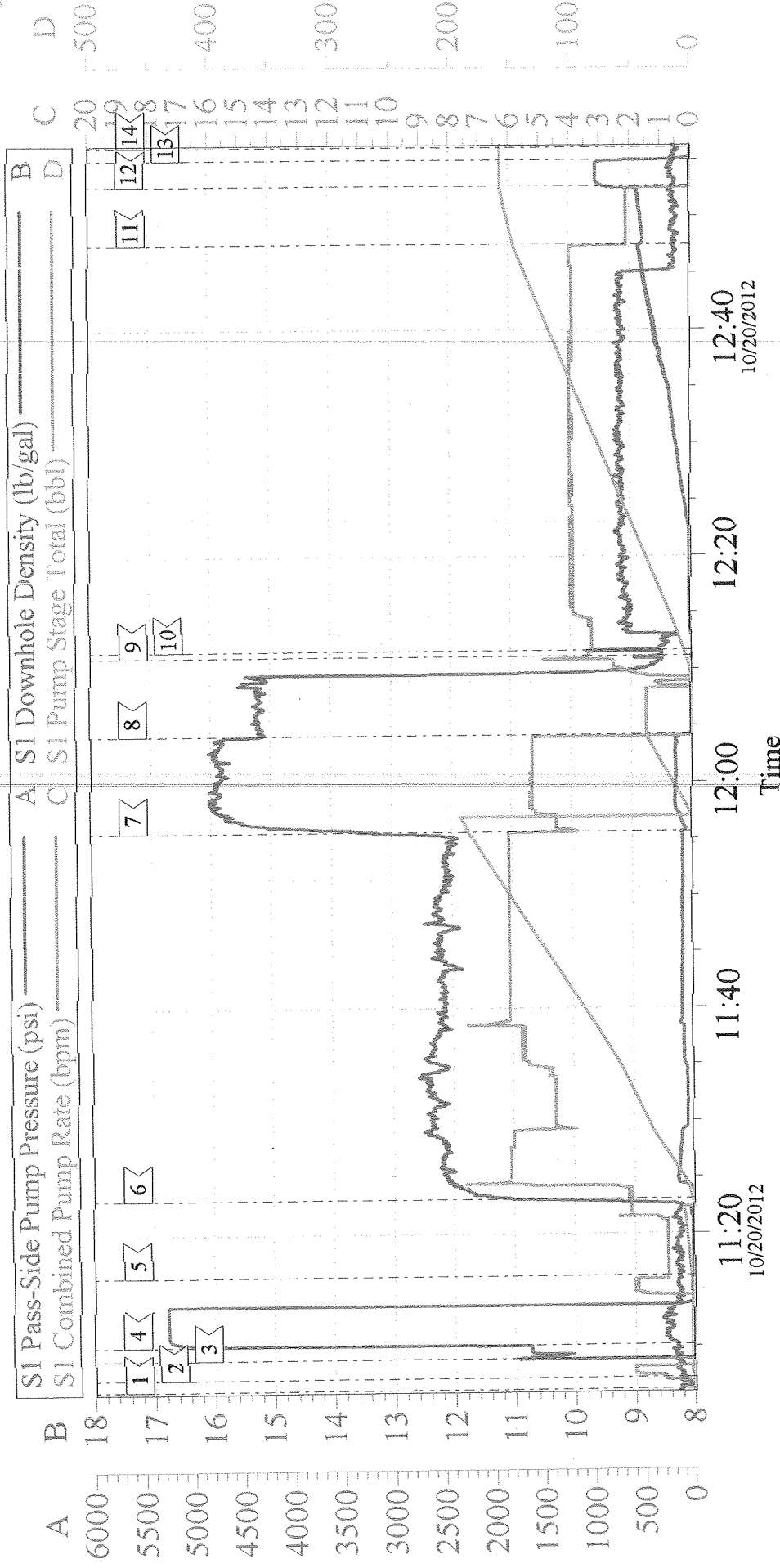
Sold To #: 338641	Ship To #: 2943741	Quote #:	Sales Order #: 9899216
Customer: GUNNISON ENERGY CORP - EBUS	Customer Rep: BROWNING, SCOTT		
Well Name: SPU Cockcroft 1294	Well #: 23-41D-H1R	API/UWI #:	
Field: WILD CAT	City (SAP): CEDAREDDGE	County/Parish: Delta	State: Colorado
Legal Description:			
Lat:	Long:		
Contractor: H&P 273	Rig/Platform Name/Num: H&P 273		
Job Purpose: Cement Surface Casing	Ticket Amount:		
Well Type: Development Well	Job Type: Cement Surface Casing		
Sales Person: PRUETT, BRADLEY	Srv Supervisor: CASTILLO, FRANCISCO	MBU ID Emp #: 513620	

Activity Description	Date/Time	Cht #	Rate bbl/min	Volume bbl		Pressure psig		Comments
				Stage	Total	Tubing	Casing	
Pre-Convoy Safety Meeting	10/19/2012 22:50							ALL HES PERSONEL
Crew Leave Yard	10/19/2012 23:00							
Arrive At Loc	10/20/2012 01:00							CASING CREW WERE RIGGING UP TO RUN CASING. RIG BEGAN RUNNING CASING AT 02:25HRS
Assessment Of Location Safety Meeting	10/20/2012 01:05							ALL HES PERSONEL
Rig-Up Equipment	10/20/2012 10:00							RIG UP 1-RED TIGER, 2-660 BULK TRUCKS, 1-400 BULK TRUCK, PUMPING IRON, CEMENT HEAD
Rig-Up Completed	10/20/2012 10:30							
Pre-Job Safety Meeting	10/20/2012 10:45							ALL HES PERSONEL AND RIG CREW/RIG LANDED CASING AT 06:55
Start Job	10/20/2012 11:06							TD 2190', TP 2196', SJ 83.68', FC 2112.32', CSG 9.625" 40# N-80, MUD 9 PPG, FV-32/ CUSTOMER DID NOT WANT TO RUN BOTTOM PLUG.
Other	10/20/2012 11:07		2	2			29.0	FILL LINES
Other	10/20/2012 11:08		0.2	0.2				5TH GEAR STALL OUT/PRESSURE HELD AT 1729 PSI

Activity Description	Date/Time	Cht #	Rate bbl/ min	Volume bbl		Pressure psig		Comments
				Stage	Total	Tubing	Casing	
Pressure Test	10/20/2012 11:10		0.2	0.2				ALL LINES HELD PRESSURE AT 5264 PSI
Pump Spacer 1	10/20/2012 11:16		2	10			33.0	FRESH WATER
Pump Lead Cement	10/20/2012 11:23		5.5	168			168.0	405 SKS, 12.3 PPG, 2.33 FT3/ SK, 12.62 GAL/SK, SET UP TIME 4:45 @ 70 BC
Pump Tail Cement	10/20/2012 11:55		5.5	41.7			172.0	200 SKS, 15.8 PPG, 1.17 FT3/SK, 4.98 GAL/SK, SETUP TIME 2:49 @ 70 BC
Shutdown	10/20/2012 12:04							
Drop Top Plug	10/20/2012 12:11							CUSTOMER WITNESSED THE PLUG LEAVE THE HEAD
Pump Displacement	10/20/2012 12:11		4	150			510.0	FRESH WATER FIRST 10BBLs WATER/MUD AFTER/20 BBLs FRESH WATER LAST 20 BBLs
Slow Rate	10/20/2012 12:47		2	10			530.0	
Bump Plug	10/20/2012 12:52			160			1000	CIRCULATED 63 BBLs OF CEMENT TO SURFACE= 152 SKS
Check Floats	10/20/2012 12:55							FLOW BACK 3/4BBLs/FLOATS HELD
End Job	10/20/2012 12:56							
Post-Job Safety Meeting (Pre Rig-Down)	10/20/2012 13:05							ALL HES PERSONEL
Rig-Down Completed	10/20/2012 14:00							
Depart Location Safety Meeting	10/20/2012 14:15							ALL HES PERSONEL
Crew Leave Location	10/20/2012 14:25							DID NOT RUN BOTTOM PLUG, 3 ADD HOURS, 100# SUGAR USED
Other	10/20/2012 14:25							THANK YOU FOR CHOOSING HALLIBURTON, JAVIER CASTILLO AND CREW

# GUNNISON/COCKCROFT1294 23-41D-H1R

9 5/8 SURFACE



Local Event Log			
1 START JOB	11:06:14	2 FILL LINES	11:07:15
4 TEST LINES	11:10:10	5 WATER SPACER	11:16:16
7 TAIL SLURRY	11:55:36	8 SHUTDOWN	12:04:13
10 DISPLACEMENT	12:11:38	11 SLOW RATE	12:47:32
13 CHECK FLOATS	12:55:00	14 END JOB	12:56:06
3 STALL OUT	11:08:57	6 LEAD SLURRY	11:23:01
9 DROP PLUG	12:11:07	12 BUMP PLUG	12:52:41

Customer: GUNNISON ENERGY CORP - EBUS		Job Date: 20-Oct-2012	Sales Order #: 9899216
Well Description: SPU Cockcroft 1294 23-41D-H1R		Job Type: 9 5/8 SURFACE	ADC Used: YES
Company Rep: SCOTT		Cement Supervisor: JAVIER CASTILLO	RED TIGER: REGGIE MILLER

<b>Field Ticket Number:</b> 9899216	<b>Field Ticket Date:</b> Saturday, October 20, 2012
<b>Bill To:</b> GUNNISON ENERGY CORP - EBUS DONOTMAIL -1601 FORUM PLACE WEST PALM BEACH, FL 33401	<b>Job Name:</b> Cement Surface <b>Order Type:</b> Streamline Order (ZOH) <b>Well Name:</b> SPU Cockcroft 1294 23-41D-H1R <b>Company Code:</b> 1100 <b>Customer PO No.:</b> NA <b>Shipping Point:</b> Grand Junction, CO, USA <b>Sales Office:</b> Rocky Mountains BD <b>Well Type:</b> Gas <b>Well Category:</b> Development
<b>Ship To:</b> GUNNISON SPU COCKCROFT 1294 23-41D-H SPU COCKCROFT 1294 23-41D-H1R 2943741 SEC 23 T12S R94W CEDAREDDGE, CO 81413	

Material	Description	QTY	UOM	Base Amt	Unit Amt	Gross Amount	Discount	Net Amount
7521	CMT SURFACE CASING BOM	1	JOB	0.00	0.00	0.00		0.00
2	MILEAGE FOR CEMENTING CREW,ZI	180	MI	0.00	5.76	1,036.80	65%	362.88
	Number of Units	1						
1	ZI-MILEAGE FROM NEAREST HES BASE,/UNIT	180	MI	0.00	9.79	1,762.20	65%	616.77
	Number of Units	1						
16091	ZI - PUMPING CHARGE	1	EA	0.00	5,584.00	5,584.00	65%	1,954.40
	DEPTH	2190						
	FEET/METERS (FT/M)		FT					
139	ADC (AUTO DENSITY CTRL) SYS, /JOB,ZI	1	JOB	0.00	2,275.00	2,275.00	65%	796.25
	NUMBER OF UNITS	1						
114	R/A DENSOMETER W/CHART RECORDER,/JOB,Z	1	JOB	0.00	1,285.00	1,285.00	65%	449.75
	NUMBER OF UNITS	1						
130104	PORT. DATA ACQUIS. W/OPTICEM RT W/HES	1	EA	0.00	2,549.00	2,549.00	65%	892.15
	DAYS OR PARTIAL DAY(WHOLE NO.)	1						
74038	ZI PLUG CONTAINER RENTAL-1ST DAY	1	EA	1,322.00	0.00	1,322.00	65%	462.70
	DAYS OR FRACTION (MIN1)	1						
90	ZI QUICK LATCH ATTACHMENT	1	JOB	0.00	616.00	616.00	65%	215.60
	SIZE IN INCHES/MILLIMETER	9.625						
	INCHES/MILLIMETERS (IN/MM)		IN					
76400	ZI MILEAGE,CMT MTLS DEL/RET MIN	90	MI	0.00	3.35	9,557.55	65%	3,345.14
	NUMBER OF TONS	31.7						
3965	HANDLE&DUMP SVC CHRg, CMT&ADDITIVES,ZI	778	CF	0.00	5.49	4,271.22	65%	1,494.93
	NUMBER OF EACH	1						

## Field Ticket

<b>Field Ticket Number:</b> 9899216	<b>Field Ticket Date:</b> Saturday, October 20, 2012
<b>Bill To:</b> GUNNISON ENERGY CORP - EBUS DONOTMAIL -1601 FORUM PLACE WEST PALM BEACH, FL 33401	<b>Job Name:</b> Cement Surface <b>Order Type:</b> Streamline Order (ZOH) <b>Well Name:</b> SPU Cockcroft 1294 23-41D-H1R <b>Company Code:</b> 1100 <b>Customer PO No.:</b> NA <b>Shipping Point:</b> Grand Junction, CO, USA <b>Sales Office:</b> Rocky Mountains BD <b>Well Type:</b> Gas <b>Well Category:</b> Development
<b>Ship To:</b> GUNNISON SPU COCKCROFT 1294 23-41D-H SPU COCKCROFT 1294 23-41D-H1R 2943741 SEC 23 T12S R94W CEDAREDGE, CO 81413	

Material	Description	QTY	UOM	Base Amt	Unit Amt	Gross Amount	Discount	Net Amount
16114	BULK TRUCK, ON SITE,>6HRS,ZI	3	EA	0.00	196.00	588.00	65%	205.80
	HOURS OR FRACTION	6						
464256	CMT, Bulk Truck on loc, additional hours	3	EA	0.00	196.00	2,940.00	65%	1,029.00
	HOURS	5						
367969	Circulating Iron Package used w/HES,CMT	1	EA	0.00	936.00	936.00	65%	327.60
97	CMTG SWAGES,7"-9 5/8",0-5 DAYS, ZI	1	EA	1,236.00	0.00	1,236.00	65%	432.60
	DAYS OR FRACTION (MIN5)	5						
16112	SRV LDR, SRV COORD, TECH PERSONNEL/HR,Z	1	EA	0.00	276.00	3,036.00	65%	1,062.60
	HOURS	11						
16092	ADDITIONAL HOURS (PUMPING EQUIPMENT), ZI	1	EA	0.00	1,071.00	3,213.00	65%	1,124.55
	HOURS	3						
7	ENVIRONMENTAL CHARGE,/JOB,ZI	1	JOB	0.00	134.00	134.00		134.00
8	IRON SAFETY INSPECTION SURCHARGE /JOB Z	1	JOB	0.00	83.00	83.00		83.00
86954	ZI FUEL SURCHG-CARS/PICKUPS<1 1/2TON	180	MI	0.00	0.23	41.40		41.40
	Number of Units	1						
86955	ZI FUEL SURCHG-HEAVY TRKS >1 1/2 TON	180	MI	0.00	0.68	489.60		489.60
	Number of Units	4						
87605	ZI FUEL SURCHG-CMT & CMT ADDITIVES	90	MI	0.00	0.23	656.19		656.19
	NUMBER OF TONS	31.7						
372867	Cmt PSL - DOT Vehicle Charge, CMT	5	EA	0.00	241.00	1,205.00		1,205.00
101214575	PLUG,CMTG,TOP,9 5/8,HWE,8.16 MIN/9.06 MA	1	EA	0.00	454.00	454.00	65%	158.90
101507884	SUGAR - GRANULATED	100	LB	0.00	4.06	406.00	65%	142.10



## Field Ticket

<b>Field Ticket Number:</b> 9899216	<b>Field Ticket Date:</b> Saturday, October 20, 2012
<b>Bill To:</b> GUNNISON ENERGY CORP - EBUS DONOTMAIL -1601 FORUM PLACE WEST PALM BEACH, FL 33401	<b>Job Name:</b> Cement Surface <b>Order Type:</b> Streamline Order (ZOH) <b>Well Name:</b> SPU Cockcroft 1294 23-41D-H1R <b>Company Code:</b> 1100 <b>Customer PO No.:</b> NA <b>Shipping Point:</b> Grand Junction, CO, USA <b>Sales Office:</b> Rocky Mountains BD <b>Well Type:</b> Gas <b>Well Category:</b> Development
<b>Ship To:</b> GUNNISON SPU COCKCROFT 1294 23-41D-H SPU COCKCROFT 1294 23-41D-H1R 2943741 SEC 23 T12S R94W CEDAREDDGE, CO 81413	

Material	Description	QTY	UOM	Base Amt	Unit Amt	Gross Amount	Discount	Net Amount
452992	ECONOCHEM (TM) SYSTEM	405	SK			20,401.96	65.0%	7,140.68
100003685	CLASS G / PREMIUM	304	SK	0.00	42.24	12,840.96	65.0%	4,494.34
452986	HALCEM (TM) SYSTEM	200	SK			11,310.64	65.0%	3,958.72
<b>Totals</b>						<b>90,230.52</b>	<b>56,953.87</b>	<b>33,276.65</b>

Halliburton Rep:

FRANCISCO CASTILLO

Customer Agent:

Mike Cleary

Halliburton Approval

THIS OUTPUT DOES NOT INCLUDE TAXES. APPLICABLE SALES TAX WILL BE BILLED ON THE FINAL INVOICE.  
 CUSTOMER HEREBY ACKNOWLEDGES RECEIPT OF THE MATERIALS AND SERVICES DESCRIBED ABOVE AND ON THE ATTACHED DOCUMENTS.

X

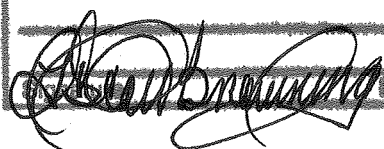
FIELD TICKET TOTAL: USD

33,276.65

Customer Signature

 Was our HSE performance satisfactory? **Y or N**  
 (Health, Safety, Environment)
Were you satisfied with our Equipment? **Y or N**Were you satisfied with our people? **Y or N**

Comments

Account Code <u>8765.235</u>	
COVEN No. <u>TBA</u>	
Property No. <u>100170</u>	AFE No. <u>183</u>
Property No. _____	AFE No. _____
Property No. _____	AFE No. _____
Property No. _____	AFE No. _____
Property No. _____	AFE No. _____
(use add'l space if necessary)	
Description/comments <u>Surface</u>	
<u>Cement Surface</u>	
	
Date <u>10/20/12</u>	