

# KERR-MCGEE OIL & GAS ONSHORE LP

Location: COLORADO Slot: SLOT#10 MORNING FRESH 28N-15HZ (398'FNL & 1865'FWL, SEC.22)  
Field: WELD COUNTY (KERR MCGEE) Well: MORNING FRESH 28N-15HZ  
Facility: SEC.22-T3N-R66W Wellbore: MORNING FRESH 28N-15HZ PWB

## Well Profile Data

Design Comment	MD (ft)	Inc (°)	Az (°)	TVD (ft)	Local N (ft)	Local E (ft)	DLS (°/100ft)	VS (ft)
Tie On	17.00	0.000	60.310	17.00	0.00	0.00	0.00	0.00
End of Tangent	1037.00	0.000	60.310	1037.00	0.00	0.00	0.00	0.00
End of Build	1367.00	6.600	60.310	1366.27	9.40	16.49	2.00	11.31
End of Tangent	6692.64	6.600	60.310	6656.62	312.59	548.25	0.00	376.03
End of 3D Arc (J)	7559.73	90.000	0.271	7193.99	884.34	604.82	10.00	950.44
End of Tangent (J)	11855.42	90.000	0.271	7194.00	5179.98	625.17	0.00	5217.57

## Location Information

Facility Name	Grid East (US ft)	Grid North (US ft)	Latitude	Longitude
SEC.22-T3N-R66W	338594.215	1327607.001	40°12'55.000"N	104°45'02.000"W
Site	Local N (ft)	Local E (ft)	Grid East (US ft)	Grid North (US ft)
SLOT#10 MORNING FRESH 28N-15HZ (398'FNL & 1865'FWL, SEC.22)	1039.37	338.32	338603.585	1327645.363
Rig on SLOT#10 MORNING FRESH 28N-15HZ (398'FNL & 1865'FWL, SEC.22) to Mud line (in Slot) SLOT#10 MORNING FRESH 28N-15HZ (398'FNL & 1865'FWL, SEC.22)				48016
Mean Sea Level to Mud line (in Slot) SLOT#10 MORNING FRESH 28N-15HZ (398'FNL & 1865'FWL, SEC.22)				0
Rig on SLOT#10 MORNING FRESH 28N-15HZ (398'FNL & 1865'FWL, SEC.22) to Mean Sea Level				48016

## Targets

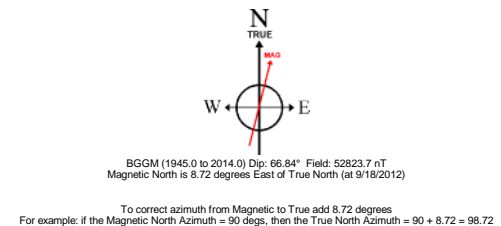
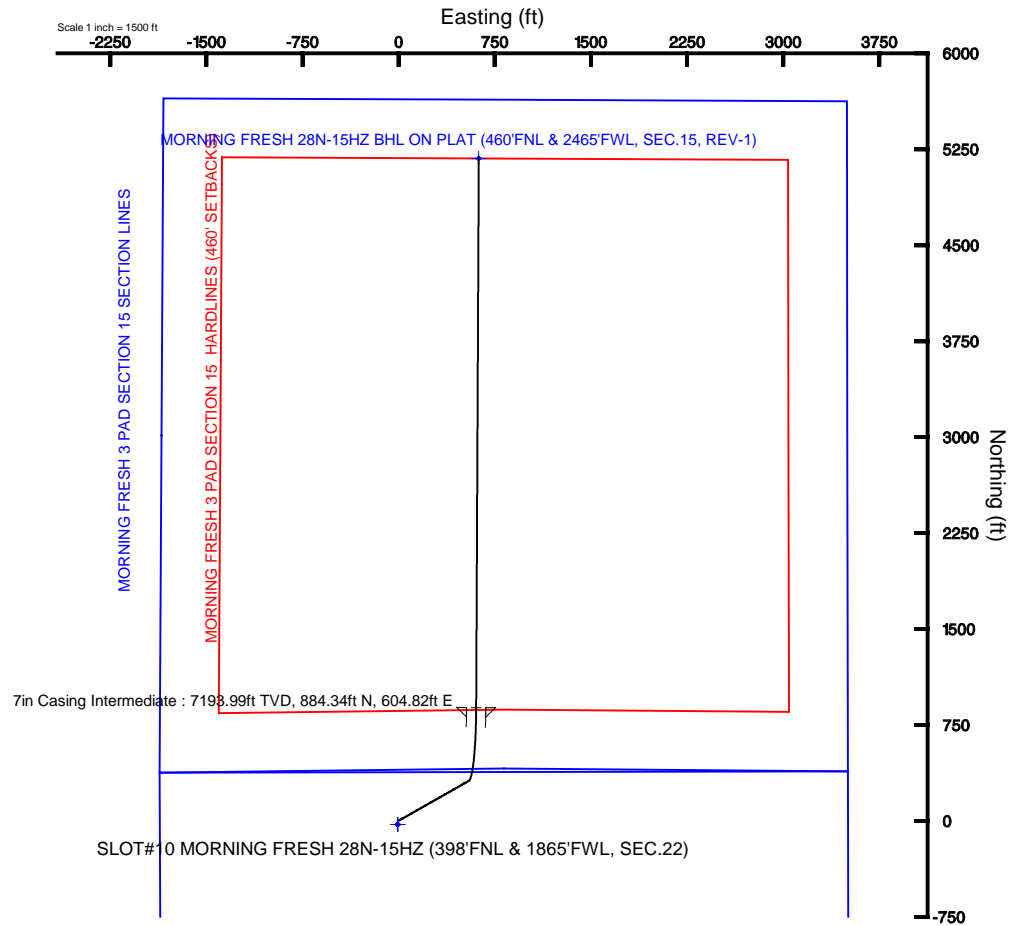
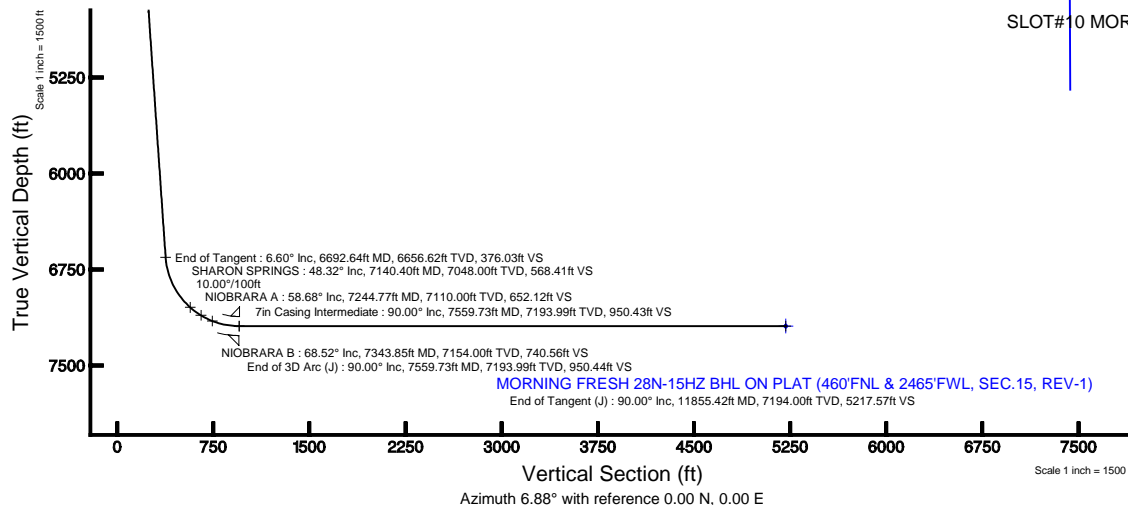
Name	MD (ft)	TVD (ft)	Local N (ft)	Local E (ft)	Grid East (US ft)	Grid North (US ft)	Latitude	Longitude
Morning Fresh 7-22 EXISTING		-13.00	-1775.01	1334.33	3208223.83	1326885.36	40°12'42.734"N	104°45'41.715"W
MORNING FRESH 3 PAD SECTION 15 SECTION LINES		0.00	-29.14	-7.29	3204867.87	1322619.08	40°12'55.987"N	104°45'53.008"W
MORNING FRESH 3 PAD SECTION 22 SECTION LINES		0.00	-29.14	-7.29	3204867.87	1322619.08	40°12'55.987"N	104°45'53.008"W
MORNING FRESH 28N-15HZ BHL ON PLAT (460'FNL & 2465'FWL, SEC.15, REV-1)	7194.00	5179.98	625.14	3205407.18	1327633.91	40°13'01.483"N	104°45'50.854"W	
MORNING FRESH 28C-15HZ BHL ON PLAT (460'FNL & 2465'FWL, SEC.15, REV-1)	7194.00	5182.18	180.24	3204982.28	1327633.28	40°13'01.488"N	104°45'56.848"W	
MORNING FRESH 3 PAD SECTION 15 HANDLINES (460' SETBACKS)	7194.00	-29.14	-7.29	3204867.87	1322619.08	40°12'55.987"N	104°45'53.008"W	
MORNING FRESH 3 PAD SECTION 22 HANDLINES (460' SETBACKS)	7194.00	-29.14	-7.29	3204867.87	1322619.08	40°12'55.987"N	104°45'53.008"W	

## Survey Program

Start MD (ft)	End MD (ft)	Tool	Model	Log Name/Comment	Wellbore
17.00	11855.42	NavTrak	NavTrak (Standard)		MORNING FRESH 28N-15HZ PWB

## Plot reference wellpath is MORNING FRESH 28N-15HZ (PERMIT) PWP

True vertical depths are referenced to Rig on SLOT#10 MORNING FRESH 28N-15HZ (398'FNL & 1865'FWL, SEC.22) (RKB)	Grid System: NAD83 / Lambert Colorado SP, Northern Zone (501), US feet
Measured depths are referenced to Rig on SLOT#10 MORNING FRESH 28N-15HZ (398'FNL & 1865'FWL, SEC.22) (RKB)	North Reference: True north
Rig on SLOT#10 MORNING FRESH 28N-15HZ (398'FNL & 1865'FWL, SEC.22) (RKB) to Mean Sea Level: 4801 feet	Scale: True distance
Mean Sea Level to Mud line (in Slot) SLOT#10 MORNING FRESH 28N-15HZ (398'FNL & 1865'FWL, SEC.22): 0 feet	Depths are in feet
Coordinates are in feet referenced to Slot	Created by: cookdenn on 9/18/2012





# Planned Wellpath Report

MORNING FRESH 28N-15HZ (PERMIT) PWP

Page 1 of 6



REFERENCE WELLPATH IDENTIFICATION			
Operator	KERR-MCGEE OIL & GAS ONSHORE LP	Slot	SLOT#10 MORNING FRESH 28N-15HZ (398'FNL & 1865'FWL, SEC.22)
Area	COLORADO	Well	MORNING FRESH 28N-15HZ
Field	WELD COUNTY (KERR MCGEE)	Wellbore	MORNING FRESH 28N-15HZ PWB
Facility	SEC.22-T3N-R66W		

REPORT SETUP INFORMATION			
Projection System	NAD83 / Lambert Colorado SP, Northern Zone (501), US feet	Software System	WellArchitect® 4.0.0
North Reference	True	User	Cookdanm
Scale	0.999957	Report Generated	9/18/2012 at 12:27:00 PM
Convergence at slot	0.47° East	Database/Source file	WA_ANADARKO/MORNING_FRESH_28N-15HZ_PWB.xml

WELLPATH LOCATION						
	Local coordinates		Grid coordinates		Geographic coordinates	
	North[ft]	East[ft]	Easting[US ft]	Northing[US ft]	Latitude	Longitude
Slot Location	1039.37	339.32	3204874.92	1322649.18	40°13'00.275"N	104°45'58.914"W
Facility Reference Pt			3204544.22	1321607.09	40°12'50.004"N	104°46'03.288"W
Field Reference Pt			3197771.84	1268891.29	40°04'09.600"N	104°47'36.000"W

WELLPATH DATUM		
Calculation method	Minimum curvature	Rig on SLOT#10 MORNING FRESH 28N-15HZ (398'FNL & 1865'FWL, SEC.22) (RKB) to Facility Vertical Datum
Horizontal Reference Pt	Slot	Rig on SLOT#10 MORNING FRESH 28N-15HZ (398'FNL & 1865'FWL, SEC.22) (RKB) to Mean Sea Level
Vertical Reference Pt	Rig on SLOT#10 MORNING FRESH 28N-15HZ (398'FNL & 1865'FWL, SEC.22) (RKB)	Rig on SLOT#10 MORNING FRESH 28N-15HZ (398'FNL & 1865'FWL, SEC.22) (RKB) to Mud Line at Slot (SLO)
MD Reference Pt	Rig on SLOT#10 MORNING FRESH 28N-15HZ (398'FNL & 1865'FWL, SEC.22) (RKB)	Section Origin
Field Vertical Reference	Mean Sea Level	Section Azimuth

## REFERENCE WELLPATH IDENTIFICATION

Operator	KERR-MCGEE OIL & GAS ONSHORE LP	Slot	SLOT#10 MORNING FRESH 28N-15HZ (398'FNL & 1865'FWL, SEC.22)
Area	COLORADO	Well	MORNING FRESH 28N-15HZ
Field	WELD COUNTY (KERR MCGEE)	Wellbore	MORNING FRESH 28N-15HZ PWB
Facility	SEC.22-T3N-R66W		

## WELLPATH DATA (131 stations) † = interpolated/extrapolated station

MD [ft]	Inclination [°]	Azimuth [°]	TVD [ft]	Vert Sect [ft]	North [ft]	East [ft]	DLS [°/100ft]	Comments
0.00†	0.000	60.310	0.00	0.00	0.00	0.00	0.00	
17.00	0.000	60.310	17.00	0.00	0.00	0.00	0.00	Tie On
117.00†	0.000	60.310	117.00	0.00	0.00	0.00	0.00	
217.00†	0.000	60.310	217.00	0.00	0.00	0.00	0.00	
317.00†	0.000	60.310	317.00	0.00	0.00	0.00	0.00	
417.00†	0.000	60.310	417.00	0.00	0.00	0.00	0.00	
517.00†	0.000	60.310	517.00	0.00	0.00	0.00	0.00	
617.00†	0.000	60.310	617.00	0.00	0.00	0.00	0.00	
717.00†	0.000	60.310	717.00	0.00	0.00	0.00	0.00	
750.00†	0.000	60.310	750.00	0.00	0.00	0.00	0.00	FOX HILLS
817.00†	0.000	60.310	817.00	0.00	0.00	0.00	0.00	
917.00†	0.000	60.310	917.00	0.00	0.00	0.00	0.00	
1017.00†	0.000	60.310	1017.00	0.00	0.00	0.00	0.00	
1037.00	0.000	60.310	1037.00	0.00	0.00	0.00	0.00	End of Tangent
1117.00†	1.600	60.310	1116.99	0.67	0.55	0.97	2.00	
1217.00†	3.600	60.310	1216.88	3.37	2.80	4.91	2.00	
1317.00†	5.600	60.310	1316.55	8.15	6.77	11.88	2.00	
1367.00	6.600	60.310	1366.27	11.31	9.40	16.49	2.00	End of Build
1417.00†	6.600	60.310	1415.94	14.74	12.25	21.49	0.00	
1517.00†	6.600	60.310	1515.28	21.58	17.94	31.47	0.00	
1617.00†	6.600	60.310	1614.61	28.43	23.64	41.46	0.00	
1717.00†	6.600	60.310	1713.95	35.28	29.33	51.44	0.00	
1817.00†	6.600	60.310	1813.29	42.13	35.02	61.42	0.00	
1917.00†	6.600	60.310	1912.63	48.98	40.71	71.41	0.00	
2017.00†	6.600	60.310	2011.96	55.83	46.41	81.39	0.00	
2117.00†	6.600	60.310	2111.30	62.67	52.10	91.38	0.00	
2217.00†	6.600	60.310	2210.64	69.52	57.79	101.36	0.00	
2317.00†	6.600	60.310	2309.97	76.37	63.49	111.35	0.00	
2417.00†	6.600	60.310	2409.31	83.22	69.18	121.33	0.00	
2517.00†	6.600	60.310	2508.65	90.07	74.87	131.32	0.00	
2617.00†	6.600	60.310	2607.99	96.92	80.57	141.30	0.00	
2717.00†	6.600	60.310	2707.32	103.76	86.26	151.29	0.00	
2817.00†	6.600	60.310	2806.66	110.61	91.95	161.27	0.00	
2917.00†	6.600	60.310	2906.00	117.46	97.64	171.26	0.00	
3017.00†	6.600	60.310	3005.34	124.31	103.34	181.24	0.00	
3117.00†	6.600	60.310	3104.67	131.16	109.03	191.23	0.00	
3217.00†	6.600	60.310	3204.01	138.01	114.72	201.21	0.00	
3317.00†	6.600	60.310	3303.35	144.85	120.42	211.20	0.00	
3417.00†	6.600	60.310	3402.68	151.70	126.11	221.18	0.00	
3517.00†	6.600	60.310	3502.02	158.55	131.80	231.17	0.00	
3617.00†	6.600	60.310	3601.36	165.40	137.49	241.15	0.00	
3717.00†	6.600	60.310	3700.70	172.25	143.19	251.14	0.00	
3817.00†	6.600	60.310	3800.03	179.10	148.88	261.12	0.00	
3917.00†	6.600	60.310	3899.37	185.94	154.57	271.11	0.00	
3995.15†	6.600	60.310	3977.00	191.29	159.02	278.91	0.00	PARKMAN

## REFERENCE WELLPATH IDENTIFICATION

Operator	KERR-MCGEE OIL & GAS ONSHORE LP	Slot	SLOT#10 MORNING FRESH 28N-15HZ (398'FNL & 1865'FWL, SEC.22)
Area	COLORADO	Well	MORNING FRESH 28N-15HZ
Field	WELD COUNTY (KERR MCGEE)	Wellbore	MORNING FRESH 28N-15HZ PWB
Facility	SEC.22-T3N-R66W		

## WELLPATH DATA (131 stations) † = interpolated/extrapolated station

MD [ft]	Inclination [°]	Azimuth [°]	TVD [ft]	Vert Sect [ft]	North [ft]	East [ft]	DLS [°/100ft]	Comments
4017.00†	6.600	60.310	3998.71	192.79	160.27	281.09	0.00	
4117.00†	6.600	60.310	4098.05	199.64	165.96	291.08	0.00	
4217.00†	6.600	60.310	4197.38	206.49	171.65	301.06	0.00	
4317.00†	6.600	60.310	4296.72	213.34	177.34	311.04	0.00	
4417.00†	6.600	60.310	4396.06	220.18	183.04	321.03	0.00	
4491.44†	6.600	60.310	4470.00	225.28	187.28	328.46	0.00	SUSSEX
4517.00†	6.600	60.310	4495.39	227.03	188.73	331.01	0.00	
4617.00†	6.600	60.310	4594.73	233.88	194.42	341.00	0.00	
4717.00†	6.600	60.310	4694.07	240.73	200.12	350.98	0.00	
4817.00†	6.600	60.310	4793.41	247.58	205.81	360.97	0.00	
4917.00†	6.600	60.310	4892.74	254.43	211.50	370.95	0.00	
5017.00†	6.600	60.310	4992.08	261.27	217.20	380.94	0.00	
5117.00†	6.600	60.310	5091.42	268.12	222.89	390.92	0.00	
5217.00†	6.600	60.310	5190.76	274.97	228.58	400.91	0.00	
5317.00†	6.600	60.310	5290.09	281.82	234.27	410.89	0.00	
5417.00†	6.600	60.310	5389.43	288.67	239.97	420.88	0.00	
5517.00†	6.600	60.310	5488.77	295.52	245.66	430.86	0.00	
5617.00†	6.600	60.310	5588.10	302.36	251.35	440.85	0.00	
5717.00†	6.600	60.310	5687.44	309.21	257.05	450.83	0.00	
5817.00†	6.600	60.310	5786.78	316.06	262.74	460.82	0.00	
5917.00†	6.600	60.310	5886.12	322.91	268.43	470.80	0.00	
6017.00†	6.600	60.310	5985.45	329.76	274.12	480.79	0.00	
6117.00†	6.600	60.310	6084.79	336.61	279.82	490.77	0.00	
6217.00†	6.600	60.310	6184.13	343.45	285.51	500.76	0.00	
6317.00†	6.600	60.310	6283.47	350.30	291.20	510.74	0.00	
6417.00†	6.600	60.310	6382.80	357.15	296.90	520.73	0.00	
6517.00†	6.600	60.310	6482.14	364.00	302.59	530.71	0.00	
6617.00†	6.600	60.310	6581.48	370.85	308.28	540.69	0.00	
6692.64	6.600	60.310	6656.62	376.03	312.59	548.25	0.00	End of Tangent
6717.00†	8.090	45.116	6680.78	378.21	314.49	550.68	10.00	
6817.00†	16.711	19.776	6778.42	397.80	333.03	560.55	10.00	
6917.00†	26.313	11.966	6871.36	433.98	368.34	570.04	10.00	
7017.00†	36.122	8.166	6956.78	485.66	419.32	578.84	10.00	
7117.00†	46.005	5.826	7032.09	551.26	484.45	586.70	10.00	
7140.40†	48.322	5.391	7048.00	568.41	501.52	588.38	10.00	SHARON SPRINGS
7217.00†	55.921	4.160	7095.00	628.78	561.73	593.37	10.00	
7244.77†	58.678	3.769	7110.00	652.12	585.04	594.99	10.00	NIOBRARA A
7317.00†	65.855	2.847	7143.59	715.89	648.83	598.66	10.00	
7343.85†	68.524	2.531	7154.00	740.56	673.55	599.82	10.00	NIOBRARA B
7417.00†	75.799	1.725	7176.39	809.91	743.09	602.39	10.00	
7517.00†	85.748	0.698	7192.41	908.01	841.65	604.46	10.00	
7559.73	90.000	0.271	7193.99	950.44	884.34	604.82	10.00	End of 3D Arc (J)
7617.00†	90.000	0.271	7193.99	1007.32	941.61	605.09	0.00	
7717.00†	90.000	0.271	7193.99	1106.66	1041.60	605.57	0.00	
7817.00†	90.000	0.271	7193.99	1205.99	1141.60	606.04	0.00	

## REFERENCE WELLPATH IDENTIFICATION

Operator	KERR-MCGEE OIL & GAS ONSHORE LP	Slot	SLOT#10 MORNING FRESH 28N-15HZ (398'FNL & 1865'FWL, SEC.22)
Area	COLORADO	Well	MORNING FRESH 28N-15HZ
Field	WELD COUNTY (KERR MCGEE)	Wellbore	MORNING FRESH 28N-15HZ PWB
Facility	SEC.22-T3N-R66W		

## WELLPATH DATA (131 stations) † = interpolated/extrapolated station

MD [ft]	Inclination [°]	Azimuth [°]	TVD [ft]	Vert Sect [ft]	North [ft]	East [ft]	DLS [°/100ft]	Comments
7917.00†	90.000	0.271	7193.99	1305.33	1241.60	606.52	0.00	
8017.00†	90.000	0.271	7193.99	1404.67	1341.60	606.99	0.00	
8117.00†	90.000	0.271	7193.99	1504.00	1441.60	607.46	0.00	
8217.00†	90.000	0.271	7193.99	1603.34	1541.60	607.94	0.00	
8317.00†	90.000	0.271	7193.99	1702.67	1641.60	608.41	0.00	
8417.00†	90.000	0.271	7193.99	1802.01	1741.60	608.88	0.00	
8517.00†	90.000	0.271	7193.99	1901.34	1841.60	609.36	0.00	
8617.00†	90.000	0.271	7193.99	2000.68	1941.59	609.83	0.00	
8717.00†	90.000	0.271	7193.99	2100.01	2041.59	610.30	0.00	
8817.00†	90.000	0.271	7193.99	2199.35	2141.59	610.78	0.00	
8917.00†	90.000	0.271	7193.99	2298.68	2241.59	611.25	0.00	
9017.00†	90.000	0.271	7194.00	2398.02	2341.59	611.72	0.00	
9117.00†	90.000	0.271	7194.00	2497.35	2441.59	612.20	0.00	
9217.00†	90.000	0.271	7194.00	2596.69	2541.59	612.67	0.00	
9317.00†	90.000	0.271	7194.00	2696.02	2641.59	613.15	0.00	
9417.00†	90.000	0.271	7194.00	2795.36	2741.59	613.62	0.00	
9517.00†	90.000	0.271	7194.00	2894.69	2841.58	614.09	0.00	
9617.00†	90.000	0.271	7194.00	2994.03	2941.58	614.57	0.00	
9717.00†	90.000	0.271	7194.00	3093.36	3041.58	615.04	0.00	
9817.00†	90.000	0.271	7194.00	3192.70	3141.58	615.51	0.00	
9917.00†	90.000	0.271	7194.00	3292.03	3241.58	615.99	0.00	
10017.00†	90.000	0.271	7194.00	3391.37	3341.58	616.46	0.00	
10117.00†	90.000	0.271	7194.00	3490.70	3441.58	616.93	0.00	
10217.00†	90.000	0.271	7194.00	3590.04	3541.58	617.41	0.00	
10317.00†	90.000	0.271	7194.00	3689.37	3641.58	617.88	0.00	
10417.00†	90.000	0.271	7194.00	3788.71	3741.57	618.36	0.00	
10517.00†	90.000	0.271	7194.00	3888.05	3841.57	618.83	0.00	
10617.00†	90.000	0.271	7194.00	3987.38	3941.57	619.30	0.00	
10717.00†	90.000	0.271	7194.00	4086.72	4041.57	619.78	0.00	
10817.00†	90.000	0.271	7194.00	4186.05	4141.57	620.25	0.00	
10917.00†	90.000	0.271	7194.00	4285.39	4241.57	620.72	0.00	
11017.00†	90.000	0.271	7194.00	4384.72	4341.57	621.20	0.00	
11117.00†	90.000	0.271	7194.00	4484.06	4441.57	621.67	0.00	
11217.00†	90.000	0.271	7194.00	4583.39	4541.57	622.14	0.00	
11317.00†	90.000	0.271	7194.00	4682.73	4641.56	622.62	0.00	
11417.00†	90.000	0.271	7194.00	4782.06	4741.56	623.09	0.00	
11517.00†	90.000	0.271	7194.00	4881.40	4841.56	623.56	0.00	
11617.00†	90.000	0.271	7194.00	4980.73	4941.56	624.04	0.00	
11717.00†	90.000	0.271	7194.00	5080.07	5041.56	624.51	0.00	
11817.00†	90.000	0.271	7194.00	5179.40	5141.56	624.99	0.00	
11855.42	90.000	0.271	7194.00 <sup>†</sup>	5217.57	5179.98	625.17	0.00	End of Tangent (J)



# Planned Wellpath Report

MORNING FRESH 28N-15HZ (PERMIT) PWP

Page 5 of 6



## REFERENCE WELLPATH IDENTIFICATION

Operator	KERR-MCGEE OIL & GAS ONSHORE LP	Slot	SLOT#10 MORNING FRESH 28N-15HZ (398'FNL & 1865'FWL, SEC.22)
Area	COLORADO	Well	MORNING FRESH 28N-15HZ
Field	WELD COUNTY (KERR MCGEE)	Wellbore	MORNING FRESH 28N-15HZ PWB
Facility	SEC.22-T3N-R66W		

## HOLE & CASING SECTIONS - Ref Wellbore: MORNING FRESH 28N-15HZ PWB Ref Wellpath: MORNING FRESH 28N-15HZ (PERMIT) PWP

String/Diameter	Start MD [ft]	End MD [ft]	Interval [ft]	Start TVD [ft]	End TVD [ft]	Start N/S [ft]	Start E/W [ft]	End N/S [ft]	End E/W [ft]
9.625in Open Hole	17.00	937.00	920.00	17.00	937.00	0.00	0.00	0.00	0.00
7in Casing Intermediate	17.00	7559.73	7542.73	17.00	7193.99	0.00	0.00	884.34	604.82

## TARGETS

Name	MD [ft]	TVD [ft]	North [ft]	East [ft]	Grid East [US ft]	Grid North [US ft]	Latitude	Longitude	Shape
Morning Fresh 7-22 EXISTING		-13.00	-1775.01	1334.33	3206223.83	1320885.36	40°12'42.734"N	104°45'41.715"W	circle
MORNING FRESH 3 PAD SECTION 15 SECTION LINES		0.00	-29.14	-7.29	3204867.87	1322619.98	40°12'59.987"N	104°45'59.008"W	polygon
MORNING FRESH 3 PAD SECTION 22 SECTION LINES		0.00	-29.14	-7.29	3204867.87	1322619.98	40°12'59.987"N	104°45'59.008"W	polygon
1) MORNING FRESH 28N-15HZ BHL ON PLAT (460'FNL & 2465'FWL, SEC.15, REV-1)		7194.00	5179.96	625.14	3205457.16	1327833.91	40°13'51.463"N	104°45'50.854"W	point
MORNING FRESH 29C-15HZ BHL ON PLAT (460'FNL & 2000'FWL, SEC.15, REV-1)		7384.00	5182.18	160.24	3204992.28	1327832.28	40°13'51.485"N	104°45'56.848"W	point
MORNING FRESH 3 PAD SECTION 15 HARDLINES (460' SETBACKS)		7384.00	-29.14	-7.29	3204867.87	1322619.98	40°12'59.987"N	104°45'59.008"W	polygon
MORNING FRESH 3 PAD SECTION 22 HARDLINES (460' SETBACKS)		7384.00	-29.14	-7.29	3204867.87	1322619.98	40°12'59.987"N	104°45'59.008"W	polygon

## SURVEY PROGRAM - Ref Wellbore: MORNING FRESH 28N-15HZ PWB Ref Wellpath: MORNING FRESH 28N-15HZ (PERMIT) PWP

Start MD [ft]	End MD [ft]	Positional Uncertainty Model	Log Name/Comment	Wellbore
17.00	11855.42	NaviTrak (Standard)		MORNING FRESH 28N-15HZ PWB



**Planned Wellpath Report**  
**MORNING FRESH 28N-15HZ (PERMIT) PWP**  
Page 6 of 6



REFERENCE WELLPATH IDENTIFICATION			
Operator	KERR-MCGEE OIL & GAS ONSHORE LP	Slot	SLOT#10 MORNING FRESH 28N-15HZ (398'FNL & 1865'FWL, SEC.22)
Area	COLORADO	Well	MORNING FRESH 28N-15HZ
Field	WELD COUNTY (KERR MCGEE)	Wellbore	MORNING FRESH 28N-15HZ PWB
Facility	SEC.22-T3N-R66W		

WELLPATH COMMENTS					
MD [ft]	Inclination [°]	Azimuth [°]	TVD [ft]	Comment	
750.00	0.000	60.310	750.00	FOX HILLS	
3995.15	6.600	60.310	3977.00	PARKMAN	
4491.44	6.600	60.310	4470.00	SUSSEX	
7140.40	48.322	5.391	7048.00	SHARON SPRINGS	
7244.77	58.678	3.769	7110.00	NIOBRARA A	
7343.85	68.524	2.531	7154.00	NIOBRARA B	