

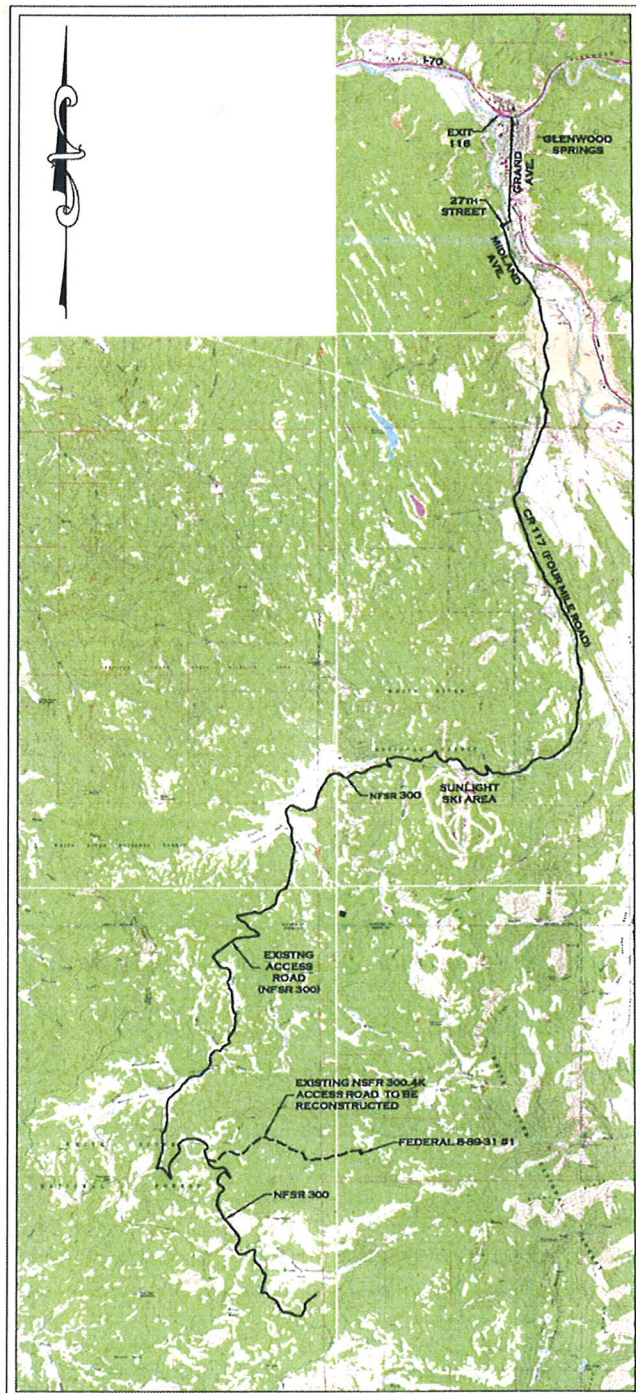
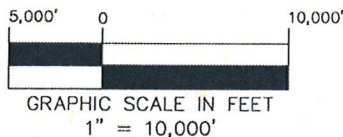
SG INTEREST I, LTD.

FEDERAL 8-89-31 #1

SE1/4 OF SECTION 31, TOWNSHIP 8 SOUTH, RANGE 89 WEST OF THE 6TH P.M.
COUNTY OF PITKIN, STATE OF COLORADO

ACCESS DESCRIPTION

FROM INTERSTATE - 70 EXIT 116
(GLENWOOD SPRINGS); THEN FOLLOW
ALONG (SOUTH) ON GRAND AVENUE
(COLORADO STATE HIGHWAY NO. 82)
 ± 1.6 MILES, THEN TURN RIGHT (WEST)
ON 27TH STREET ± 0.30 MILES THROUGH
THE ROUNDABOUT ONTO MIDLAND
AVENUE, HEAD SOUTH AND CONTINUE
ON MIDLAND AVENUE ± 1.3 MILES TO
THE INTERSECTION OF MIDLAND AVE.
AND COUNTY ROAD 117 (4 MILE ROAD),
CONTINUE RIGHT ONTO COUNTY ROAD
117 ± 8.1 MILES TO NATIONAL FOREST
SERVICE ROAD 300 (AKA CR 117), TURN
RIGHT ON NATIONAL FOREST SERVICE
ROAD 300 ± 11.9 MILES, THEN TURN
LEFT (NORTHEASTERLY) ONTO EXISTING
ACCESS ROAD SIGNED 300.4K ± 4.2
MILES TO FEDERAL 8-89-31 ACCESS
ROAD CONTINUE TO BEAR LEFT $\pm 300'$
TO WELL PAD FEDERAL 8-89-31.



HIGH COUNTRY ENGINEERING, INC.



1517 BLAKE AVENUE, STE 101
GLENWOOD SPRINGS, CO 81601
PHONE (970) 945-8676
FAX (970) 945-2555
WWW.HCENG.COM

DRAWN BY:

RPK

SCALE:

N/A

CHECKED BY:

FWH

PROJECT NO:

2121655.02

DATE:

SEPTEMBER 6, 2012

FILE:

J:\SDSKPROJ\212\1655-02\DWG\1655.02.DWG

WELL LOCATION PLAT
PREPARED FOR:

SG INTERESTS I, LTD.

FEDERAL 8-89-31 #1