

Well Name: McPeek 2-8-10

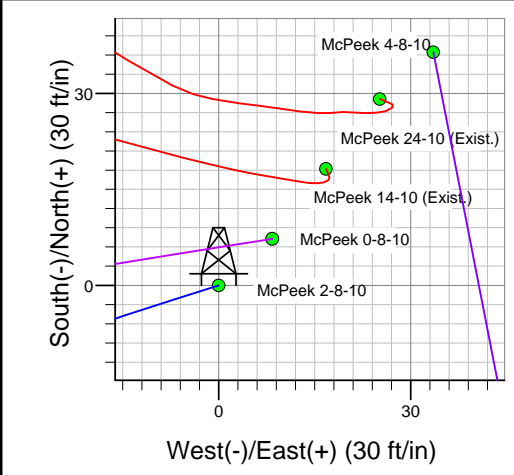
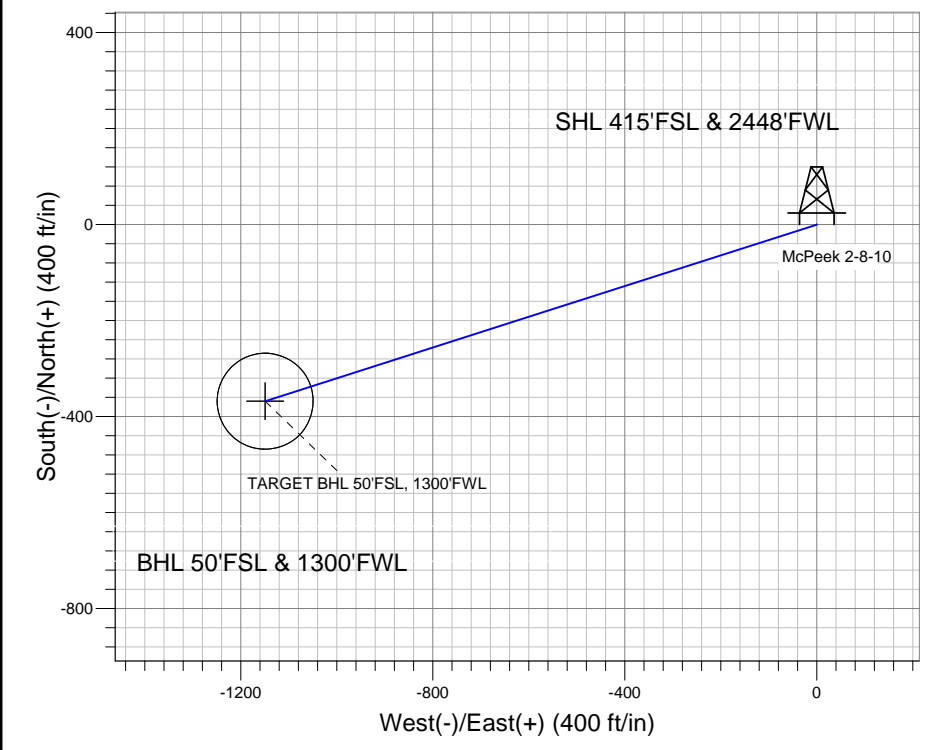
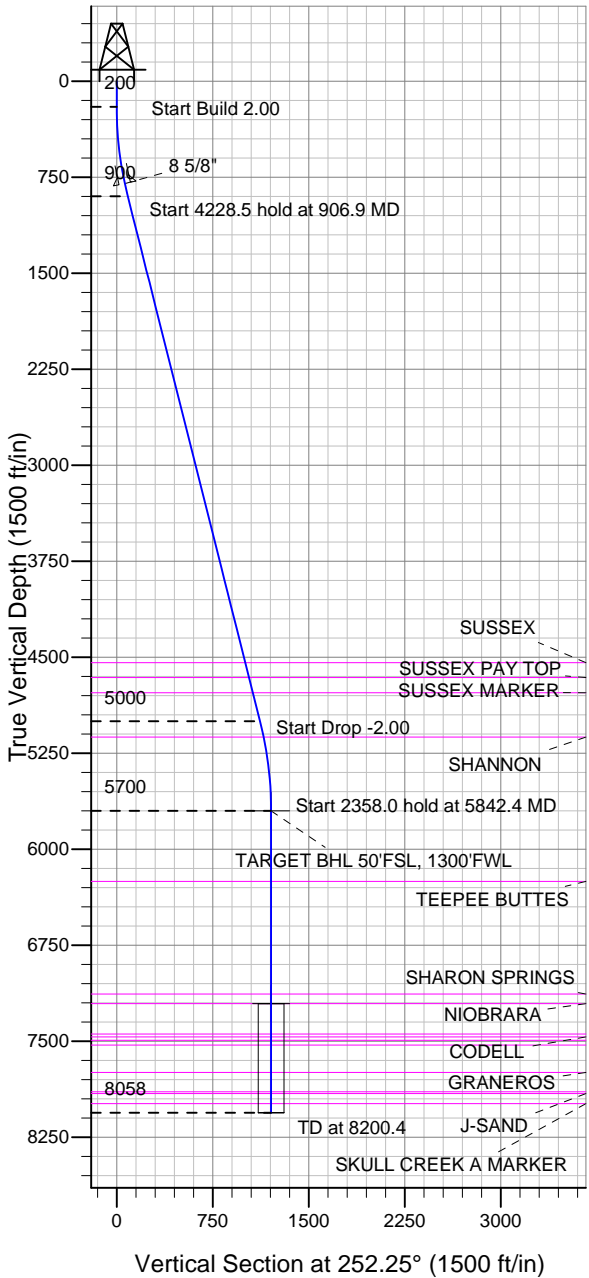
Surface Location: McPeek 2-8-10 Pad Sec.10-T2N-R66W
 North American Datum 1983 US State Plane 1983 Colorado Northern Zone

Ground Elevation: 4988.0

+N/-S	+E/-W	Northing	Easting	Latitude	Longitude	Slot
0.0	0.0	1297081.79	3205744.82	40.146540	-104.764010	

Original Well Elev WELL @ 5001.0ft (Original Well Elev)

EnCana Oil & Gas Weld County CO



McPeek 2-8-10 Pad Sec.10-T2N-R66W
 McPeek 2-8-10
 Plan #1 (1-10-13)

Azimuths to True North
 Magnetic North: 8.63°

Magnetic Field
 Strength: 52831.2snT
 Dip Angle: 66.79°
 Date: 1/10/2013
 Model: IGRF2010

WELLBORE TARGET DETAILS (LAT/LONG)

Name	TVD	+N/-S	+E/-W	Latitude	Longitude	Shape
TARGET BHL 50'FSL, 1300'FWL	5700.0	-367.9	-1149.0	40.145530	-104.768120	Point
TARGET CIRCLE 50'FSL & 1300'FWL	7206.0	-367.9	-1149.0	40.145530	-104.768120	Circle (Radius: 100.0)

SECTION DETAILS

Sec	MD	Inc	Azi	TVD	+N/-S	+E/-W	DLeg	TFace	VSec	Target
1	0.0	0.00	0.00	0.0	0.0	0.0	0.00	0.00	0.0	
2	200.0	0.00	0.00	200.0	0.0	0.0	0.00	0.00	0.0	
3	906.9	14.14	252.25	899.8	-26.5	-82.7	2.00	252.25	86.8	
4	5135.5	14.14	252.25	5000.2	-341.4	-1066.4	0.00	0.00	1119.7	
5	5842.4	0.00	0.00	5700.0	-367.9	-1149.0	2.00	180.00	1206.5	TARGET BHL 50'FSL, 1300'FWL
6	8200.4	0.00	0.00	8058.0	-367.9	-1149.0	0.00	0.00	1206.5	



Directional

EnCana Oil & Gas Weld County CO

SEC.10-T2N-R66W

McPeek 2-8-10 Pad Sec.10-T2N-R66W

McPeek 2-8-10

Wellbore #1

Plan: Plan #1 (1-10-13)

Standard Planning Report

14 January, 2013

Database:	Landmark	Local Co-ordinate Reference:	Well McPeek 2-8-10
Company:	EnCana Oil & Gas Weld County CO	TVD Reference:	WELL @ 5001.0ft (Original Well Elev)
Project:	SEC.10-T2N-R66W	MD Reference:	WELL @ 5001.0ft (Original Well Elev)
Site:	McPeek 2-8-10 Pad Sec.10-T2N-R66W	North Reference:	True
Well:	McPeek 2-8-10	Survey Calculation Method:	Minimum Curvature
Wellbore:	Wellbore #1		
Design:	Plan #1 (1-10-13)		

Project	SEC.10-T2N-R66W, Weld County, Colorado		
Map System:	US State Plane 1983	System Datum:	Mean Sea Level
Geo Datum:	North American Datum 1983		Using Well Reference Point
Map Zone:	Colorado Northern Zone		Using geodetic scale factor

Site	McPeek 2-8-10 Pad Sec.10-T2N-R66W				
Site Position:		Northing:	1,297,081.80ft	Latitude:	40.146540
From:	Lat/Long	Easting:	3,205,744.82ft	Longitude:	-104.764010
Position Uncertainty:	0.0 ft	Slot Radius:	"	Grid Convergence:	0.48 °

Well	McPeek 2-8-10					
Well Position	+N/-S	0.0 ft	Northing:	1,297,081.79 ft	Latitude:	40.146540
	+E/-W	0.0 ft	Easting:	3,205,744.82 ft	Longitude:	-104.764010
Position Uncertainty		0.0 ft	Wellhead Elevation:	ft	Ground Level:	4,988.0 ft

Wellbore	Wellbore #1				
Magnetics	Model Name	Sample Date	Declination (°)	Dip Angle (°)	Field Strength (nT)
	IGRF2010	1/10/2013	8.63	66.79	52,831

Design	Plan #1 (1-10-13)			
Audit Notes:				
Version:	Phase:	PROTOTYPE	Tie On Depth:	0.0
Vertical Section:	Depth From (TVD) (ft)	+N/-S (ft)	+E/-W (ft)	Direction (°)
	0.0	0.0	0.0	252.25

Plan Sections										
Measured Depth (ft)	Inclination (°)	Azimuth (°)	Vertical Depth (ft)	+N/-S (ft)	+E/-W (ft)	Dogleg Rate (°/100ft)	Build Rate (°/100ft)	Turn Rate (°/100ft)	TFO (°)	Target
0.0	0.00	0.00	0.0	0.0	0.0	0.00	0.00	0.00	0.00	
200.0	0.00	0.00	200.0	0.0	0.0	0.00	0.00	0.00	0.00	
906.9	14.14	252.25	899.8	-26.5	-82.7	2.00	2.00	0.00	252.25	
5,135.5	14.14	252.25	5,000.2	-341.4	-1,066.4	0.00	0.00	0.00	0.00	
5,842.4	0.00	0.00	5,700.0	-367.9	-1,149.0	2.00	-2.00	0.00	180.00	TARGET BHL 50'F!
8,200.4	0.00	0.00	8,058.0	-367.9	-1,149.0	0.00	0.00	0.00	0.00	

Database:	Landmark	Local Co-ordinate Reference:	Well McPeek 2-8-10
Company:	EnCana Oil & Gas Weld County CO	TVD Reference:	WELL @ 5001.0ft (Original Well Elev)
Project:	SEC.10-T2N-R66W	MD Reference:	WELL @ 5001.0ft (Original Well Elev)
Site:	McPeek 2-8-10 Pad Sec.10-T2N-R66W	North Reference:	True
Well:	McPeek 2-8-10	Survey Calculation Method:	Minimum Curvature
Wellbore:	Wellbore #1		
Design:	Plan #1 (1-10-13)		

Planned Survey									
Measured Depth (ft)	Inclination (°)	Azimuth (°)	Vertical Depth (ft)	+N/-S (ft)	+E/-W (ft)	Vertical Section (ft)	Dogleg Rate (°/100ft)	Build Rate (°/100ft)	Turn Rate (°/100ft)
0.0	0.00	0.00	0.0	0.0	0.0	0.0	0.00	0.00	0.00
40.0	0.00	0.00	40.0	0.0	0.0	0.0	0.00	0.00	0.00
80.0	0.00	0.00	80.0	0.0	0.0	0.0	0.00	0.00	0.00
120.0	0.00	0.00	120.0	0.0	0.0	0.0	0.00	0.00	0.00
160.0	0.00	0.00	160.0	0.0	0.0	0.0	0.00	0.00	0.00
200.0	0.00	0.00	200.0	0.0	0.0	0.0	0.00	0.00	0.00
240.0	0.80	252.25	240.0	-0.1	-0.3	0.3	2.00	2.00	0.00
280.0	1.60	252.25	280.0	-0.3	-1.1	1.1	2.00	2.00	0.00
320.0	2.40	252.25	320.0	-0.8	-2.4	2.5	2.00	2.00	0.00
360.0	3.20	252.25	359.9	-1.4	-4.3	4.5	2.00	2.00	0.00
400.0	4.00	252.25	399.8	-2.1	-6.6	7.0	2.00	2.00	0.00
440.0	4.80	252.25	439.7	-3.1	-9.6	10.0	2.00	2.00	0.00
480.0	5.60	252.25	479.6	-4.2	-13.0	13.7	2.00	2.00	0.00
520.0	6.40	252.25	519.3	-5.4	-17.0	17.9	2.00	2.00	0.00
560.0	7.20	252.25	559.1	-6.9	-21.5	22.6	2.00	2.00	0.00
600.0	8.00	252.25	598.7	-8.5	-26.6	27.9	2.00	2.00	0.00
640.0	8.80	252.25	638.3	-10.3	-32.1	33.7	2.00	2.00	0.00
680.0	9.60	252.25	677.8	-12.2	-38.2	40.1	2.00	2.00	0.00
720.0	10.40	252.25	717.1	-14.4	-44.8	47.1	2.00	2.00	0.00
760.0	11.20	252.25	756.4	-16.6	-52.0	54.6	2.00	2.00	0.00
800.0	12.00	252.25	795.6	-19.1	-59.6	62.6	2.00	2.00	0.00
804.5	12.09	252.25	800.0	-19.4	-60.5	63.5	2.00	2.00	0.00
8 5/8"									
840.0	12.80	252.25	834.7	-21.7	-67.8	71.2	2.00	2.00	0.00
880.0	13.60	252.25	873.6	-24.5	-76.5	80.3	2.00	2.00	0.00
906.9	14.14	252.25	899.8	-26.5	-82.7	86.8	2.00	2.00	0.00
920.0	14.14	252.25	912.5	-27.4	-85.7	90.0	0.00	0.00	0.00
960.0	14.14	252.25	951.2	-30.4	-95.0	99.7	0.00	0.00	0.00
1,000.0	14.14	252.25	990.0	-33.4	-104.3	109.5	0.00	0.00	0.00
1,040.0	14.14	252.25	1,028.8	-36.4	-113.6	119.3	0.00	0.00	0.00
1,080.0	14.14	252.25	1,067.6	-39.4	-122.9	129.1	0.00	0.00	0.00
1,120.0	14.14	252.25	1,106.4	-42.3	-132.2	138.8	0.00	0.00	0.00
1,160.0	14.14	252.25	1,145.2	-45.3	-141.5	148.6	0.00	0.00	0.00
1,200.0	14.14	252.25	1,184.0	-48.3	-150.8	158.4	0.00	0.00	0.00
1,240.0	14.14	252.25	1,222.8	-51.3	-160.1	168.1	0.00	0.00	0.00
1,280.0	14.14	252.25	1,261.5	-54.3	-169.4	177.9	0.00	0.00	0.00
1,320.0	14.14	252.25	1,300.3	-57.2	-178.7	187.7	0.00	0.00	0.00
1,360.0	14.14	252.25	1,339.1	-60.2	-188.0	197.5	0.00	0.00	0.00
1,400.0	14.14	252.25	1,377.9	-63.2	-197.4	207.2	0.00	0.00	0.00
1,440.0	14.14	252.25	1,416.7	-66.2	-206.7	217.0	0.00	0.00	0.00
1,480.0	14.14	252.25	1,455.5	-69.2	-216.0	226.8	0.00	0.00	0.00
1,520.0	14.14	252.25	1,494.3	-72.1	-225.3	236.5	0.00	0.00	0.00
1,560.0	14.14	252.25	1,533.1	-75.1	-234.6	246.3	0.00	0.00	0.00
1,600.0	14.14	252.25	1,571.9	-78.1	-243.9	256.1	0.00	0.00	0.00
1,640.0	14.14	252.25	1,610.6	-81.1	-253.2	265.9	0.00	0.00	0.00
1,680.0	14.14	252.25	1,649.4	-84.0	-262.5	275.6	0.00	0.00	0.00
1,720.0	14.14	252.25	1,688.2	-87.0	-271.8	285.4	0.00	0.00	0.00
1,760.0	14.14	252.25	1,727.0	-90.0	-281.1	295.2	0.00	0.00	0.00
1,800.0	14.14	252.25	1,765.8	-93.0	-290.4	304.9	0.00	0.00	0.00
1,840.0	14.14	252.25	1,804.6	-96.0	-299.7	314.7	0.00	0.00	0.00
1,880.0	14.14	252.25	1,843.4	-98.9	-309.0	324.5	0.00	0.00	0.00
1,920.0	14.14	252.25	1,882.2	-101.9	-318.3	334.2	0.00	0.00	0.00
1,960.0	14.14	252.25	1,920.9	-104.9	-327.6	344.0	0.00	0.00	0.00
2,000.0	14.14	252.25	1,959.7	-107.9	-336.9	353.8	0.00	0.00	0.00

Database:	Landmark	Local Co-ordinate Reference:	Well McPeek 2-8-10
Company:	EnCana Oil & Gas Weld County CO	TVD Reference:	WELL @ 5001.0ft (Original Well Elev)
Project:	SEC.10-T2N-R66W	MD Reference:	WELL @ 5001.0ft (Original Well Elev)
Site:	McPeek 2-8-10 Pad Sec.10-T2N-R66W	North Reference:	True
Well:	McPeek 2-8-10	Survey Calculation Method:	Minimum Curvature
Wellbore:	Wellbore #1		
Design:	Plan #1 (1-10-13)		

Planned Survey									
Measured Depth (ft)	Inclination (°)	Azimuth (°)	Vertical Depth (ft)	+N/-S (ft)	+E/-W (ft)	Vertical Section (ft)	Dogleg Rate (°/100ft)	Build Rate (°/100ft)	Turn Rate (°/100ft)
2,040.0	14.14	252.25	1,998.5	-110.9	-346.2	363.6	0.00	0.00	0.00
2,080.0	14.14	252.25	2,037.3	-113.8	-355.6	373.3	0.00	0.00	0.00
2,120.0	14.14	252.25	2,076.1	-116.8	-364.9	383.1	0.00	0.00	0.00
2,160.0	14.14	252.25	2,114.9	-119.8	-374.2	392.9	0.00	0.00	0.00
2,200.0	14.14	252.25	2,153.7	-122.8	-383.5	402.6	0.00	0.00	0.00
2,240.0	14.14	252.25	2,192.5	-125.8	-392.8	412.4	0.00	0.00	0.00
2,280.0	14.14	252.25	2,231.3	-128.7	-402.1	422.2	0.00	0.00	0.00
2,320.0	14.14	252.25	2,270.0	-131.7	-411.4	432.0	0.00	0.00	0.00
2,360.0	14.14	252.25	2,308.8	-134.7	-420.7	441.7	0.00	0.00	0.00
2,400.0	14.14	252.25	2,347.6	-137.7	-430.0	451.5	0.00	0.00	0.00
2,440.0	14.14	252.25	2,386.4	-140.7	-439.3	461.3	0.00	0.00	0.00
2,480.0	14.14	252.25	2,425.2	-143.6	-448.6	471.0	0.00	0.00	0.00
2,520.0	14.14	252.25	2,464.0	-146.6	-457.9	480.8	0.00	0.00	0.00
2,560.0	14.14	252.25	2,502.8	-149.6	-467.2	490.6	0.00	0.00	0.00
2,600.0	14.14	252.25	2,541.6	-152.6	-476.5	500.4	0.00	0.00	0.00
2,640.0	14.14	252.25	2,580.3	-155.6	-485.8	510.1	0.00	0.00	0.00
2,680.0	14.14	252.25	2,619.1	-158.5	-495.1	519.9	0.00	0.00	0.00
2,720.0	14.14	252.25	2,657.9	-161.5	-504.4	529.7	0.00	0.00	0.00
2,760.0	14.14	252.25	2,696.7	-164.5	-513.7	539.4	0.00	0.00	0.00
2,800.0	14.14	252.25	2,735.5	-167.5	-523.1	549.2	0.00	0.00	0.00
2,840.0	14.14	252.25	2,774.3	-170.5	-532.4	559.0	0.00	0.00	0.00
2,880.0	14.14	252.25	2,813.1	-173.4	-541.7	568.8	0.00	0.00	0.00
2,920.0	14.14	252.25	2,851.9	-176.4	-551.0	578.5	0.00	0.00	0.00
2,960.0	14.14	252.25	2,890.7	-179.4	-560.3	588.3	0.00	0.00	0.00
3,000.0	14.14	252.25	2,929.4	-182.4	-569.6	598.1	0.00	0.00	0.00
3,040.0	14.14	252.25	2,968.2	-185.4	-578.9	607.8	0.00	0.00	0.00
3,080.0	14.14	252.25	3,007.0	-188.3	-588.2	617.6	0.00	0.00	0.00
3,120.0	14.14	252.25	3,045.8	-191.3	-597.5	627.4	0.00	0.00	0.00
3,160.0	14.14	252.25	3,084.6	-194.3	-606.8	637.1	0.00	0.00	0.00
3,200.0	14.14	252.25	3,123.4	-197.3	-616.1	646.9	0.00	0.00	0.00
3,240.0	14.14	252.25	3,162.2	-200.3	-625.4	656.7	0.00	0.00	0.00
3,280.0	14.14	252.25	3,201.0	-203.2	-634.7	666.5	0.00	0.00	0.00
3,320.0	14.14	252.25	3,239.7	-206.2	-644.0	676.2	0.00	0.00	0.00
3,360.0	14.14	252.25	3,278.5	-209.2	-653.3	686.0	0.00	0.00	0.00
3,400.0	14.14	252.25	3,317.3	-212.2	-662.6	695.8	0.00	0.00	0.00
3,440.0	14.14	252.25	3,356.1	-215.2	-671.9	705.5	0.00	0.00	0.00
3,480.0	14.14	252.25	3,394.9	-218.1	-681.2	715.3	0.00	0.00	0.00
3,520.0	14.14	252.25	3,433.7	-221.1	-690.6	725.1	0.00	0.00	0.00
3,560.0	14.14	252.25	3,472.5	-224.1	-699.9	734.9	0.00	0.00	0.00
3,600.0	14.14	252.25	3,511.3	-227.1	-709.2	744.6	0.00	0.00	0.00
3,640.0	14.14	252.25	3,550.1	-230.0	-718.5	754.4	0.00	0.00	0.00
3,680.0	14.14	252.25	3,588.8	-233.0	-727.8	764.2	0.00	0.00	0.00
3,720.0	14.14	252.25	3,627.6	-236.0	-737.1	773.9	0.00	0.00	0.00
3,760.0	14.14	252.25	3,666.4	-239.0	-746.4	783.7	0.00	0.00	0.00
3,800.0	14.14	252.25	3,705.2	-242.0	-755.7	793.5	0.00	0.00	0.00
3,840.0	14.14	252.25	3,744.0	-244.9	-765.0	803.3	0.00	0.00	0.00
3,880.0	14.14	252.25	3,782.8	-247.9	-774.3	813.0	0.00	0.00	0.00
3,920.0	14.14	252.25	3,821.6	-250.9	-783.6	822.8	0.00	0.00	0.00
3,960.0	14.14	252.25	3,860.4	-253.9	-792.9	832.6	0.00	0.00	0.00
4,000.0	14.14	252.25	3,899.1	-256.9	-802.2	842.3	0.00	0.00	0.00
4,040.0	14.14	252.25	3,937.9	-259.8	-811.5	852.1	0.00	0.00	0.00
4,080.0	14.14	252.25	3,976.7	-262.8	-820.8	861.9	0.00	0.00	0.00
4,120.0	14.14	252.25	4,015.5	-265.8	-830.1	871.7	0.00	0.00	0.00
4,160.0	14.14	252.25	4,054.3	-268.8	-839.4	881.4	0.00	0.00	0.00

Database:	Landmark	Local Co-ordinate Reference:	Well McPeek 2-8-10
Company:	EnCana Oil & Gas Weld County CO	TVD Reference:	WELL @ 5001.0ft (Original Well Elev)
Project:	SEC.10-T2N-R66W	MD Reference:	WELL @ 5001.0ft (Original Well Elev)
Site:	McPeek 2-8-10 Pad Sec.10-T2N-R66W	North Reference:	True
Well:	McPeek 2-8-10	Survey Calculation Method:	Minimum Curvature
Wellbore:	Wellbore #1		
Design:	Plan #1 (1-10-13)		

Planned Survey

Measured Depth (ft)	Inclination (°)	Azimuth (°)	Vertical Depth (ft)	+N/-S (ft)	+E/-W (ft)	Vertical Section (ft)	Dogleg Rate (°/100ft)	Build Rate (°/100ft)	Turn Rate (°/100ft)
4,200.0	14.14	252.25	4,093.1	-271.8	-848.7	891.2	0.00	0.00	0.00
4,240.0	14.14	252.25	4,131.9	-274.7	-858.1	901.0	0.00	0.00	0.00
4,280.0	14.14	252.25	4,170.7	-277.7	-867.4	910.7	0.00	0.00	0.00
4,320.0	14.14	252.25	4,209.5	-280.7	-876.7	920.5	0.00	0.00	0.00
4,360.0	14.14	252.25	4,248.2	-283.7	-886.0	930.3	0.00	0.00	0.00
4,400.0	14.14	252.25	4,287.0	-286.7	-895.3	940.0	0.00	0.00	0.00
4,440.0	14.14	252.25	4,325.8	-289.6	-904.6	949.8	0.00	0.00	0.00
4,480.0	14.14	252.25	4,364.6	-292.6	-913.9	959.6	0.00	0.00	0.00
4,520.0	14.14	252.25	4,403.4	-295.6	-923.2	969.4	0.00	0.00	0.00
4,560.0	14.14	252.25	4,442.2	-298.6	-932.5	979.1	0.00	0.00	0.00
4,600.0	14.14	252.25	4,481.0	-301.6	-941.8	988.9	0.00	0.00	0.00
4,640.0	14.14	252.25	4,519.8	-304.5	-951.1	998.7	0.00	0.00	0.00
4,664.0	14.14	252.25	4,543.0	-306.3	-956.7	1,004.5	0.00	0.00	0.00
SUSSEX									
4,680.0	14.14	252.25	4,558.5	-307.5	-960.4	1,008.4	0.00	0.00	0.00
4,720.0	14.14	252.25	4,597.3	-310.5	-969.7	1,018.2	0.00	0.00	0.00
4,760.0	14.14	252.25	4,636.1	-313.5	-979.0	1,028.0	0.00	0.00	0.00
4,783.6	14.14	252.25	4,659.0	-315.2	-984.5	1,033.8	0.00	0.00	0.00
SUSSEX PAY TOP									
4,800.0	14.14	252.25	4,674.9	-316.5	-988.3	1,037.8	0.00	0.00	0.00
4,840.0	14.14	252.25	4,713.7	-319.4	-997.6	1,047.5	0.00	0.00	0.00
4,880.0	14.14	252.25	4,752.5	-322.4	-1,006.9	1,057.3	0.00	0.00	0.00
4,906.3	14.14	252.25	4,778.0	-324.4	-1,013.1	1,063.7	0.00	0.00	0.00
SUSSEX MARKER									
4,920.0	14.14	252.25	4,791.3	-325.4	-1,016.2	1,067.1	0.00	0.00	0.00
4,960.0	14.14	252.25	4,830.1	-328.4	-1,025.6	1,076.8	0.00	0.00	0.00
5,000.0	14.14	252.25	4,868.9	-331.4	-1,034.9	1,086.6	0.00	0.00	0.00
5,040.0	14.14	252.25	4,907.6	-334.3	-1,044.2	1,096.4	0.00	0.00	0.00
5,080.0	14.14	252.25	4,946.4	-337.3	-1,053.5	1,106.2	0.00	0.00	0.00
5,120.0	14.14	252.25	4,985.2	-340.3	-1,062.8	1,115.9	0.00	0.00	0.00
5,135.5	14.14	252.25	5,000.2	-341.4	-1,066.4	1,119.7	0.00	0.00	0.00
5,160.0	13.65	252.25	5,024.0	-343.2	-1,072.0	1,125.6	2.00	-2.00	0.00
5,200.0	12.85	252.25	5,063.0	-346.0	-1,080.7	1,134.8	2.00	-2.00	0.00
5,240.0	12.05	252.25	5,102.0	-348.7	-1,088.9	1,143.4	2.00	-2.00	0.00
5,262.5	11.60	252.25	5,124.0	-350.1	-1,093.3	1,148.0	2.00	-2.00	0.00
SHANNON									
5,280.0	11.25	252.25	5,141.2	-351.1	-1,096.6	1,151.5	2.00	-2.00	0.00
5,320.0	10.45	252.25	5,180.5	-353.4	-1,103.8	1,159.0	2.00	-2.00	0.00
5,360.0	9.65	252.25	5,219.9	-355.6	-1,110.4	1,166.0	2.00	-2.00	0.00
5,400.0	8.85	252.25	5,259.4	-357.5	-1,116.6	1,172.4	2.00	-2.00	0.00
5,440.0	8.05	252.25	5,298.9	-359.3	-1,122.2	1,178.3	2.00	-2.00	0.00
5,480.0	7.25	252.25	5,338.6	-360.9	-1,127.2	1,183.6	2.00	-2.00	0.00
5,520.0	6.45	252.25	5,378.3	-362.4	-1,131.8	1,188.4	2.00	-2.00	0.00
5,560.0	5.65	252.25	5,418.1	-363.7	-1,135.8	1,192.6	2.00	-2.00	0.00
5,600.0	4.85	252.25	5,457.9	-364.8	-1,139.3	1,196.2	2.00	-2.00	0.00
5,640.0	4.05	252.25	5,497.8	-365.7	-1,142.2	1,199.3	2.00	-2.00	0.00
5,680.0	3.25	252.25	5,537.7	-366.5	-1,144.6	1,201.9	2.00	-2.00	0.00
5,720.0	2.45	252.25	5,577.6	-367.1	-1,146.5	1,203.9	2.00	-2.00	0.00
5,760.0	1.65	252.25	5,617.6	-367.5	-1,147.9	1,205.3	2.00	-2.00	0.00
5,800.0	0.85	252.25	5,657.6	-367.8	-1,148.7	1,206.2	2.00	-2.00	0.00
5,840.0	0.05	252.25	5,697.6	-367.9	-1,149.0	1,206.5	2.00	-2.00	0.00
5,842.4	0.00	0.00	5,700.0	-367.9	-1,149.0	1,206.5	2.00	-2.00	0.00
5,880.0	0.00	0.00	5,737.6	-367.9	-1,149.0	1,206.5	0.00	0.00	0.00

Database:	Landmark	Local Co-ordinate Reference:	Well McPeek 2-8-10
Company:	EnCana Oil & Gas Weld County CO	TVD Reference:	WELL @ 5001.0ft (Original Well Elev)
Project:	SEC.10-T2N-R66W	MD Reference:	WELL @ 5001.0ft (Original Well Elev)
Site:	McPeek 2-8-10 Pad Sec.10-T2N-R66W	North Reference:	True
Well:	McPeek 2-8-10	Survey Calculation Method:	Minimum Curvature
Wellbore:	Wellbore #1		
Design:	Plan #1 (1-10-13)		

Planned Survey										
Measured Depth (ft)	Inclination (°)	Azimuth (°)	Vertical Depth (ft)	+N/-S (ft)	+E/-W (ft)	Vertical Section (ft)	Dogleg Rate (°/100ft)	Build Rate (°/100ft)	Turn Rate (°/100ft)	
5,920.0	0.00	0.00	5,777.6	-367.9	-1,149.0	1,206.5	0.00	0.00	0.00	
5,960.0	0.00	0.00	5,817.6	-367.9	-1,149.0	1,206.5	0.00	0.00	0.00	
6,000.0	0.00	0.00	5,857.6	-367.9	-1,149.0	1,206.5	0.00	0.00	0.00	
6,040.0	0.00	0.00	5,897.6	-367.9	-1,149.0	1,206.5	0.00	0.00	0.00	
6,080.0	0.00	0.00	5,937.6	-367.9	-1,149.0	1,206.5	0.00	0.00	0.00	
6,120.0	0.00	0.00	5,977.6	-367.9	-1,149.0	1,206.5	0.00	0.00	0.00	
6,160.0	0.00	0.00	6,017.6	-367.9	-1,149.0	1,206.5	0.00	0.00	0.00	
6,200.0	0.00	0.00	6,057.6	-367.9	-1,149.0	1,206.5	0.00	0.00	0.00	
6,240.0	0.00	0.00	6,097.6	-367.9	-1,149.0	1,206.5	0.00	0.00	0.00	
6,280.0	0.00	0.00	6,137.6	-367.9	-1,149.0	1,206.5	0.00	0.00	0.00	
6,320.0	0.00	0.00	6,177.6	-367.9	-1,149.0	1,206.5	0.00	0.00	0.00	
6,360.0	0.00	0.00	6,217.6	-367.9	-1,149.0	1,206.5	0.00	0.00	0.00	
6,393.4	0.00	0.00	6,251.0	-367.9	-1,149.0	1,206.5	0.00	0.00	0.00	
TEEPEE BUTTES										
6,400.0	0.00	0.00	6,257.6	-367.9	-1,149.0	1,206.5	0.00	0.00	0.00	
6,440.0	0.00	0.00	6,297.6	-367.9	-1,149.0	1,206.5	0.00	0.00	0.00	
6,480.0	0.00	0.00	6,337.6	-367.9	-1,149.0	1,206.5	0.00	0.00	0.00	
6,520.0	0.00	0.00	6,377.6	-367.9	-1,149.0	1,206.5	0.00	0.00	0.00	
6,560.0	0.00	0.00	6,417.6	-367.9	-1,149.0	1,206.5	0.00	0.00	0.00	
6,600.0	0.00	0.00	6,457.6	-367.9	-1,149.0	1,206.5	0.00	0.00	0.00	
6,640.0	0.00	0.00	6,497.6	-367.9	-1,149.0	1,206.5	0.00	0.00	0.00	
6,680.0	0.00	0.00	6,537.6	-367.9	-1,149.0	1,206.5	0.00	0.00	0.00	
6,720.0	0.00	0.00	6,577.6	-367.9	-1,149.0	1,206.5	0.00	0.00	0.00	
6,760.0	0.00	0.00	6,617.6	-367.9	-1,149.0	1,206.5	0.00	0.00	0.00	
6,800.0	0.00	0.00	6,657.6	-367.9	-1,149.0	1,206.5	0.00	0.00	0.00	
6,840.0	0.00	0.00	6,697.6	-367.9	-1,149.0	1,206.5	0.00	0.00	0.00	
6,880.0	0.00	0.00	6,737.6	-367.9	-1,149.0	1,206.5	0.00	0.00	0.00	
6,920.0	0.00	0.00	6,777.6	-367.9	-1,149.0	1,206.5	0.00	0.00	0.00	
6,960.0	0.00	0.00	6,817.6	-367.9	-1,149.0	1,206.5	0.00	0.00	0.00	
7,000.0	0.00	0.00	6,857.6	-367.9	-1,149.0	1,206.5	0.00	0.00	0.00	
7,040.0	0.00	0.00	6,897.6	-367.9	-1,149.0	1,206.5	0.00	0.00	0.00	
7,080.0	0.00	0.00	6,937.6	-367.9	-1,149.0	1,206.5	0.00	0.00	0.00	
7,120.0	0.00	0.00	6,977.6	-367.9	-1,149.0	1,206.5	0.00	0.00	0.00	
7,160.0	0.00	0.00	7,017.6	-367.9	-1,149.0	1,206.5	0.00	0.00	0.00	
7,200.0	0.00	0.00	7,057.6	-367.9	-1,149.0	1,206.5	0.00	0.00	0.00	
7,240.0	0.00	0.00	7,097.6	-367.9	-1,149.0	1,206.5	0.00	0.00	0.00	
7,274.4	0.00	0.00	7,132.0	-367.9	-1,149.0	1,206.5	0.00	0.00	0.00	
SHARON SPRINGS										
7,280.0	0.00	0.00	7,137.6	-367.9	-1,149.0	1,206.5	0.00	0.00	0.00	
7,320.0	0.00	0.00	7,177.6	-367.9	-1,149.0	1,206.5	0.00	0.00	0.00	
7,348.4	0.00	0.00	7,206.0	-367.9	-1,149.0	1,206.5	0.00	0.00	0.00	
NIOBRARA										
7,360.0	0.00	0.00	7,217.6	-367.9	-1,149.0	1,206.5	0.00	0.00	0.00	
7,400.0	0.00	0.00	7,257.6	-367.9	-1,149.0	1,206.5	0.00	0.00	0.00	
7,440.0	0.00	0.00	7,297.6	-367.9	-1,149.0	1,206.5	0.00	0.00	0.00	
7,480.0	0.00	0.00	7,337.6	-367.9	-1,149.0	1,206.5	0.00	0.00	0.00	
7,520.0	0.00	0.00	7,377.6	-367.9	-1,149.0	1,206.5	0.00	0.00	0.00	
7,560.0	0.00	0.00	7,417.6	-367.9	-1,149.0	1,206.5	0.00	0.00	0.00	
7,586.4	0.00	0.00	7,444.0	-367.9	-1,149.0	1,206.5	0.00	0.00	0.00	
FT. HAYES										
7,600.0	0.00	0.00	7,457.6	-367.9	-1,149.0	1,206.5	0.00	0.00	0.00	
7,608.4	0.00	0.00	7,466.0	-367.9	-1,149.0	1,206.5	0.00	0.00	0.00	
CODELL										
7,635.4	0.00	0.00	7,493.0	-367.9	-1,149.0	1,206.5	0.00	0.00	0.00	

Database:	Landmark	Local Co-ordinate Reference:	Well McPeek 2-8-10
Company:	EnCana Oil & Gas Weld County CO	TVD Reference:	WELL @ 5001.0ft (Original Well Elev)
Project:	SEC.10-T2N-R66W	MD Reference:	WELL @ 5001.0ft (Original Well Elev)
Site:	McPeek 2-8-10 Pad Sec.10-T2N-R66W	North Reference:	True
Well:	McPeek 2-8-10	Survey Calculation Method:	Minimum Curvature
Wellbore:	Wellbore #1		
Design:	Plan #1 (1-10-13)		

Planned Survey										
Measured Depth (ft)	Inclination (°)	Azimuth (°)	Vertical Depth (ft)	+N/-S (ft)	+E/-W (ft)	Vertical Section (ft)	Dogleg Rate (°/100ft)	Build Rate (°/100ft)	Turn Rate (°/100ft)	
FAIRPORT										
7,640.0	0.00	0.00	7,497.6	-367.9	-1,149.0	1,206.5	0.00	0.00	0.00	
7,673.4	0.00	0.00	7,531.0	-367.9	-1,149.0	1,206.5	0.00	0.00	0.00	
GREENHORN										
7,680.0	0.00	0.00	7,537.6	-367.9	-1,149.0	1,206.5	0.00	0.00	0.00	
7,720.0	0.00	0.00	7,577.6	-367.9	-1,149.0	1,206.5	0.00	0.00	0.00	
7,760.0	0.00	0.00	7,617.6	-367.9	-1,149.0	1,206.5	0.00	0.00	0.00	
7,800.0	0.00	0.00	7,657.6	-367.9	-1,149.0	1,206.5	0.00	0.00	0.00	
7,840.0	0.00	0.00	7,697.6	-367.9	-1,149.0	1,206.5	0.00	0.00	0.00	
7,880.0	0.00	0.00	7,737.6	-367.9	-1,149.0	1,206.5	0.00	0.00	0.00	
7,885.4	0.00	0.00	7,743.0	-367.9	-1,149.0	1,206.5	0.00	0.00	0.00	
GRANEROS										
7,920.0	0.00	0.00	7,777.6	-367.9	-1,149.0	1,206.5	0.00	0.00	0.00	
7,960.0	0.00	0.00	7,817.6	-367.9	-1,149.0	1,206.5	0.00	0.00	0.00	
8,000.0	0.00	0.00	7,857.6	-367.9	-1,149.0	1,206.5	0.00	0.00	0.00	
8,037.4	0.00	0.00	7,895.0	-367.9	-1,149.0	1,206.5	0.00	0.00	0.00	
MOWRY										
8,040.0	0.00	0.00	7,897.6	-367.9	-1,149.0	1,206.5	0.00	0.00	0.00	
8,050.4	0.00	0.00	7,908.0	-367.9	-1,149.0	1,206.5	0.00	0.00	0.00	
J-SAND										
8,080.0	0.00	0.00	7,937.6	-367.9	-1,149.0	1,206.5	0.00	0.00	0.00	
8,120.0	0.00	0.00	7,977.6	-367.9	-1,149.0	1,206.5	0.00	0.00	0.00	
8,130.4	0.00	0.00	7,988.0	-367.9	-1,149.0	1,206.5	0.00	0.00	0.00	
SKULL CREEK A MARKER										
8,160.0	0.00	0.00	8,017.6	-367.9	-1,149.0	1,206.5	0.00	0.00	0.00	
8,200.0	0.00	0.00	8,057.6	-367.9	-1,149.0	1,206.5	0.00	0.00	0.00	
8,200.4	0.00	0.00	8,058.0	-367.9	-1,149.0	1,206.5	0.00	0.00	0.00	

Casing Points						
Measured Depth (ft)	Vertical Depth (ft)		Name	Casing Diameter (")	Hole Diameter (")	
804.5	800.0	8 5/8"		8-5/8	12-1/4	

Database:	Landmark	Local Co-ordinate Reference:	Well McPeek 2-8-10
Company:	EnCana Oil & Gas Weld County CO	TVD Reference:	WELL @ 5001.0ft (Original Well Elev)
Project:	SEC.10-T2N-R66W	MD Reference:	WELL @ 5001.0ft (Original Well Elev)
Site:	McPeek 2-8-10 Pad Sec.10-T2N-R66W	North Reference:	True
Well:	McPeek 2-8-10	Survey Calculation Method:	Minimum Curvature
Wellbore:	Wellbore #1		
Design:	Plan #1 (1-10-13)		

Formations

Measured Depth (ft)	Vertical Depth (ft)	Name	Lithology	Dip (°)	Dip Direction (°)
4,664.0	4,543.0	SUSSEX		0.00	
4,783.6	4,659.0	SUSSEX PAY TOP		0.00	
4,906.3	4,778.0	SUSSEX MARKER		0.00	
5,262.5	5,124.0	SHANNON		0.00	
6,393.4	6,251.0	TEEPEE BUTTES		0.00	
7,274.4	7,132.0	SHARON SPRINGS		0.00	
7,348.4	7,206.0	NIOBRARA		0.00	
7,586.4	7,444.0	FT. HAYES		0.00	
7,608.4	7,466.0	CODELL		0.00	
7,635.4	7,493.0	FAIRPORT		0.00	
7,673.4	7,531.0	GREENHORN		0.00	
7,885.4	7,743.0	GRANEROS		0.00	
8,037.4	7,895.0	MOWRY		0.00	
8,050.4	7,908.0	J-SAND		0.00	
8,130.4	7,988.0	SKULL CREEK A MARKER		0.00	



Directional

EnCana Oil & Gas Weld County CO

SEC.10-T2N-R66W

McPeek 2-8-10 Pad Sec.10-T2N-R66W

McPeek 2-8-10

Wellbore #1

Plan #1 (1-10-13)

Anticollision Report

14 January, 2013

Company:	EnCana Oil & Gas Weld County CO	Local Co-ordinate Reference:	Well McPeek 2-8-10
Project:	SEC.10-T2N-R66W	TVD Reference:	WELL @ 5001.0ft (Original Well Elev)
Reference Site:	McPeek 2-8-10 Pad Sec.10-T2N-R66W	MD Reference:	WELL @ 5001.0ft (Original Well Elev)
Site Error:	0.0ft	North Reference:	True
Reference Well:	McPeek 2-8-10	Survey Calculation Method:	Minimum Curvature
Well Error:	0.0ft	Output errors are at	2.00 sigma
Reference Wellbore	Wellbore #1	Database:	Landmark
Reference Design:	Plan #1 (1-10-13)	Offset TVD Reference:	Offset Datum

Reference	Plan #1 (1-10-13)		
Filter type:	NO GLOBAL FILTER: Using user defined selection & filtering criteria		
Interpolation Method:	MD Interval 100.0ft	Error Model:	ISCWSA
Depth Range:	Unlimited	Scan Method:	Closest Approach 3D
Results Limited by:	Maximum center-center distance of 10,000.0ft	Error Surface:	Elliptical Conic
Warning Levels Evaluated at:	2.00 Sigma		

Survey Tool Program	Date	1/14/2013		
From (ft)	To (ft)	Survey (Wellbore)	Tool Name	Description
0.0	8,200.4	Plan #1 (1-10-13) (Wellbore #1)	MWD	MWD - Standard

Summary						
Site Name	Reference Measured Depth (ft)	Offset Measured Depth (ft)	Distance Between Centres (ft)	Distance Between Ellipses (ft)	Separation Factor	Warning
Offset Well - Wellbore - Design						
McPeek 24-10 Pad Sec.10-T2N-R66W						
McPeek 14-10 (Exist.) - Wellbore #1 - Wellbore #1	261.4	262.9	23.8	22.9	25.481	CC
McPeek 14-10 (Exist.) - Wellbore #1 - Wellbore #1	300.0	301.6	23.9	22.8	21.727	ES
McPeek 14-10 (Exist.) - Wellbore #1 - Wellbore #1	800.0	801.3	52.0	47.8	12.493	SF
McPeek 2-8-10 Pad Sec.10-T2N-R66W						
McPeek 0-8-10 - Wellbore #1 - Plan #1 (1-10-13)	200.0	200.0	11.1	10.4	16.468	CC
McPeek 0-8-10 - Wellbore #1 - Plan #1 (1-10-13)	400.0	400.7	11.6	10.1	7.597	ES
McPeek 0-8-10 - Wellbore #1 - Plan #1 (1-10-13)	1,100.0	1,102.1	26.2	19.2	3.719	SF

Offset Design													Offset Site Error:	0.0 ft
Survey Program: 94-MWD													Offset Well Error:	0.0 ft
Reference														
Measured Depth (ft)	Vertical Depth (ft)	Measured Depth (ft)	Vertical Depth (ft)	Reference (ft)	Offset (ft)	Semi Major Axis Highside Toolface (°)	Offset Wellbore Centre +N/-S (ft)	Offset Wellbore Centre +E/-W (ft)	Distance Between Centres (ft)	Distance Between Ellipses (ft)	Minimum Separation (ft)	Separation Factor	Warning	
0.0	0.0	1.0	1.0	0.0	0.0	42.66	18.2	16.8	24.8	24.8	0.00	N/A		
100.0	100.0	101.1	101.1	0.1	0.1	43.88	17.7	17.0	24.5	24.3	0.23	104.863		
200.0	200.0	201.2	201.2	0.3	0.3	46.06	16.7	17.3	24.1	23.4	0.67	35.764		
261.4	261.4	262.9	262.9	0.5	0.5	154.33	16.2	16.7	23.8	22.9	0.94	25.481	CC	
300.0	300.0	301.6	301.6	0.5	0.6	154.14	16.0	15.7	23.9	22.8	1.10	21.727	ES	
400.0	399.8	402.0	401.8	0.8	0.8	149.37	16.6	10.0	25.1	23.6	1.54	16.363		
500.0	499.5	502.3	501.7	1.0	1.0	141.90	18.4	0.8	28.0	26.0	2.02	13.909		
600.0	598.7	602.3	600.6	1.3	1.3	131.38	21.9	-13.2	33.3	30.7	2.59	12.828		
700.0	697.5	701.9	698.2	1.6	1.7	120.35	27.0	-32.1	41.3	38.0	3.31	12.497		
800.0	795.6	801.3	794.8	2.0	2.2	111.69	32.7	-55.3	52.0	47.8	4.16	12.493	SF	
900.0	893.1	899.8	889.4	2.5	2.7	105.50	38.5	-82.0	64.6	59.5	5.12	12.624		
1,000.0	990.0	999.6	984.9	3.0	3.2	101.93	44.7	-110.2	78.5	72.4	6.12	12.831		
1,100.0	1,087.0	1,098.9	1,079.8	3.5	3.8	99.10	49.8	-138.8	91.7	84.5	7.15	12.820		
1,200.0	1,184.0	1,197.7	1,173.9	4.0	4.4	96.19	54.5	-168.7	104.9	96.7	8.23	12.756		
1,300.0	1,280.9	1,294.8	1,265.7	4.5	5.1	93.12	59.8	-199.8	119.4	110.1	9.30	12.840		
1,400.0	1,377.9	1,391.2	1,356.0	5.0	5.8	89.87	65.8	-232.9	135.7	125.3	10.39	13.065		
1,500.0	1,474.9	1,485.4	1,443.1	5.6	6.5	86.34	72.6	-268.3	154.5	143.0	11.46	13.479		
1,600.0	1,571.9	1,578.9	1,527.8	6.1	7.3	82.44	80.3	-307.1	176.4	163.9	12.51	14.107		
1,700.0	1,668.8	1,674.8	1,613.9	6.6	8.2	78.92	88.4	-348.5	200.0	186.5	13.54	14.770		
1,800.0	1,765.8	1,771.7	1,700.7	7.1	9.1	75.98	96.7	-390.8	224.6	210.0	14.54	15.448		

CC - Min centre to center distance or convergent point, SF - min separation factor, ES - min ellipse separation

Company:	EnCana Oil & Gas Weld County CO	Local Co-ordinate Reference:	Well McPeek 2-8-10
Project:	SEC.10-T2N-R66W	TVD Reference:	WELL @ 5001.0ft (Original Well Elev)
Reference Site:	McPeek 2-8-10 Pad Sec.10-T2N-R66W	MD Reference:	WELL @ 5001.0ft (Original Well Elev)
Site Error:	0.0ft	North Reference:	True
Reference Well:	McPeek 2-8-10	Survey Calculation Method:	Minimum Curvature
Well Error:	0.0ft	Output errors are at	2.00 sigma
Reference Wellbore	Wellbore #1	Database:	Landmark
Reference Design:	Plan #1 (1-10-13)	Offset TVD Reference:	Offset Datum

Offset Design													Offset Site Error:	0.0 ft
Survey Program: 94-MWD													Offset Well Error:	0.0 ft
Reference		Offset		Semi Major Axis			Distance						Warning	
Measured Depth (ft)	Vertical Depth (ft)	Measured Depth (ft)	Vertical Depth (ft)	Reference (ft)	Offset (ft)	Highside Toolface (°)	Offset Wellbore Centre +N/-S (ft)	+E/-W (ft)	Between Centres (ft)	Between Ellipses (ft)	Minimum Separation (ft)	Separation Factor		
1,900.0	1,862.8	1,870.7	1,789.8	7.7	10.0	73.62	104.3	-433.4	248.5	233.0	15.49	16.038		
2,000.0	1,959.7	1,967.4	1,876.8	8.2	10.8	71.72	111.6	-474.9	272.5	256.1	16.43	16.587		
2,100.0	2,056.7	2,064.2	1,964.0	8.7	11.6	70.14	118.9	-516.2	296.6	279.2	17.37	17.076		
2,200.0	2,153.7	2,161.3	2,051.2	9.3	12.5	68.66	125.8	-558.4	321.1	302.8	18.30	17.547		
2,300.0	2,250.6	2,259.7	2,140.1	9.8	13.3	67.58	133.2	-599.9	345.2	326.0	19.23	17.951		
2,400.0	2,347.6	2,355.8	2,227.3	10.3	14.1	66.88	141.1	-639.5	369.3	349.1	20.18	18.300		
2,500.0	2,444.6	2,456.7	2,318.9	10.8	15.0	66.22	149.5	-681.1	393.4	372.2	21.16	18.593		
2,600.0	2,541.6	2,551.9	2,405.6	11.4	15.8	65.73	156.9	-719.5	416.6	394.5	22.12	18.838		
2,700.0	2,638.5	2,651.0	2,495.7	11.9	16.6	65.23	165.0	-760.1	440.6	417.5	23.09	19.082		
2,800.0	2,735.5	2,749.8	2,585.8	12.4	17.4	64.83	172.6	-799.9	463.7	439.6	24.05	19.283		
2,900.0	2,832.5	2,844.5	2,672.3	13.0	18.2	64.54	180.4	-837.7	487.0	462.0	25.01	19.471		
3,000.0	2,929.4	2,939.5	2,758.7	13.5	19.1	64.22	188.2	-876.4	510.8	484.8	25.99	19.653		
3,100.0	3,026.4	3,036.5	2,846.7	14.0	19.9	63.87	196.1	-916.2	534.9	507.9	26.96	19.838		
3,200.0	3,123.4	3,120.7	2,922.8	14.6	20.6	63.56	203.2	-951.5	559.9	532.0	27.87	20.088		
3,300.0	3,220.4	3,212.9	3,005.3	15.1	21.5	63.13	211.6	-992.0	586.8	558.0	28.82	20.364		
3,400.0	3,317.3	3,319.8	3,101.1	15.6	22.5	62.69	220.9	-1,038.5	613.2	583.4	29.82	20.566		
3,500.0	3,414.3	3,426.0	3,197.3	16.2	23.4	62.42	229.7	-1,082.6	637.8	607.0	30.81	20.702		
3,600.0	3,511.3	3,537.7	3,299.4	16.7	24.3	62.24	238.2	-1,126.9	660.5	628.7	31.83	20.748		
3,700.0	3,608.2	3,634.0	3,388.2	17.2	25.0	62.20	245.6	-1,163.8	682.2	649.4	32.81	20.795		
3,800.0	3,705.2	3,727.6	3,474.2	17.8	25.8	62.23	253.9	-1,199.6	704.8	671.0	33.78	20.863		
3,900.0	3,802.2	3,834.5	3,572.9	18.3	26.6	62.25	262.4	-1,239.6	726.1	691.3	34.82	20.850		
4,000.0	3,899.1	3,925.2	3,656.5	18.8	27.3	62.23	269.7	-1,274.3	748.0	712.2	35.79	20.900		
4,100.0	3,996.1	4,022.9	3,745.8	19.4	28.1	62.05	276.0	-1,313.2	770.1	733.3	36.76	20.950		
4,200.0	4,093.1	4,120.4	3,835.0	19.9	28.9	61.87	282.5	-1,352.1	792.3	754.6	37.72	21.007		
4,300.0	4,190.1	4,220.8	3,927.5	20.4	29.7	61.87	290.7	-1,390.4	814.2	775.5	38.73	21.023		
4,400.0	4,287.0	4,309.7	4,009.3	20.9	30.5	61.85	297.7	-1,424.5	836.2	796.6	39.68	21.077		
4,500.0	4,384.0	4,391.4	4,083.9	21.5	31.2	61.82	305.1	-1,457.0	860.0	819.4	40.60	21.185		
4,600.0	4,481.0	4,481.3	4,165.4	22.0	31.9	61.75	313.7	-1,493.8	885.1	843.6	41.56	21.300		
4,700.0	4,577.9	4,592.8	4,266.5	22.5	32.9	61.65	324.0	-1,539.7	910.2	867.6	42.61	21.361		
4,800.0	4,674.9	4,733.2	4,395.7	23.1	34.0	61.57	333.9	-1,593.7	931.6	887.8	43.79	21.273		
4,900.0	4,771.9	4,822.4	4,478.4	23.6	34.7	61.55	339.3	-1,626.7	951.3	906.6	44.73	21.268		
5,000.0	4,868.9	4,911.7	4,560.9	24.1	35.4	61.52	345.3	-1,660.4	971.9	926.2	45.68	21.277		
5,100.0	4,965.8	5,025.3	4,665.9	24.7	36.3	61.48	352.6	-1,703.2	992.3	945.6	46.74	21.231		
5,200.0	5,063.0	5,145.0	4,777.6	25.2	37.1	61.67	359.4	-1,745.8	1,010.9	963.1	47.80	21.147		
5,300.0	5,160.8	5,264.4	4,889.8	25.5	37.9	61.85	365.6	-1,786.1	1,029.4	980.8	48.68	21.147		
5,400.0	5,259.4	5,397.4	5,016.4	25.8	38.7	61.94	371.9	-1,826.3	1,046.6	997.1	49.48	21.150		
5,500.0	5,358.4	5,528.6	5,142.9	26.0	39.4	62.01	378.1	-1,860.5	1,062.3	1,012.1	50.15	21.180		
5,600.0	5,457.9	5,685.6	5,296.2	26.2	40.1	61.98	384.4	-1,893.9	1,075.8	1,025.0	50.74	21.201		
5,700.0	5,557.7	5,849.7	5,458.3	26.4	40.6	61.90	388.3	-1,918.1	1,084.9	1,033.7	51.18	21.199		
5,800.0	5,657.6	5,995.4	5,603.5	26.5	40.9	61.85	390.4	-1,930.4	1,090.4	1,039.0	51.44	21.199		
5,900.0	5,757.6	6,149.1	5,757.1	26.6	41.0	-46.00	391.3	-1,935.2	1,092.9	1,041.3	51.64	21.163		
6,000.0	5,857.6	6,249.5	5,857.5	26.7	41.1	-46.01	391.3	-1,935.4	1,093.1	1,041.2	51.83	21.088		
6,100.0	5,957.6	6,353.0	5,960.9	26.8	41.2	-46.01	391.2	-1,935.5	1,093.0	1,041.0	52.03	21.010		
6,200.0	6,057.6	6,462.2	6,070.1	26.9	41.2	-46.02	390.7	-1,935.1	1,092.4	1,040.2	52.23	20.918		
6,300.0	6,157.6	6,566.5	6,174.5	27.0	41.3	-46.02	389.6	-1,934.0	1,091.0	1,038.6	52.43	20.811		
6,400.0	6,257.6	6,665.9	6,273.8	27.1	41.3	-46.04	388.4	-1,933.3	1,089.6	1,037.0	52.62	20.709		
6,500.0	6,357.6	6,764.5	6,372.4	27.2	41.4	-46.07	387.0	-1,932.7	1,088.3	1,035.5	52.81	20.609		
6,600.0	6,457.6	6,862.4	6,470.3	27.3	41.4	-46.11	385.7	-1,932.4	1,087.1	1,034.1	53.00	20.513		
6,700.0	6,557.6	6,959.1	6,567.0	27.4	41.5	-46.14	384.6	-1,932.2	1,086.2	1,033.0	53.19	20.421		
6,800.0	6,657.6	7,051.8	6,659.7	27.5	41.6	-46.19	383.7	-1,932.5	1,085.7	1,032.3	53.38	20.338		
6,813.0	6,670.6	7,063.7	6,671.6	27.6	41.6	-46.19	383.6	-1,932.5	1,085.7	1,032.3	53.41	20.329		
6,900.0	6,757.6	7,146.0	6,753.9	27.7	41.7	-46.25	383.0	-1,933.4	1,085.9	1,032.3	53.57	20.269		

CC - Min centre to center distance or convergent point, SF - min separation factor, ES - min ellipse separation

Company:	EnCana Oil & Gas Weld County CO	Local Co-ordinate Reference:	Well McPeek 2-8-10
Project:	SEC.10-T2N-R66W	TVD Reference:	WELL @ 5001.0ft (Original Well Elev)
Reference Site:	McPeek 2-8-10 Pad Sec.10-T2N-R66W	MD Reference:	WELL @ 5001.0ft (Original Well Elev)
Site Error:	0.0ft	North Reference:	True
Reference Well:	McPeek 2-8-10	Survey Calculation Method:	Minimum Curvature
Well Error:	0.0ft	Output errors are at	2.00 sigma
Reference Wellbore	Wellbore #1	Database:	Landmark
Reference Design:	Plan #1 (1-10-13)	Offset TVD Reference:	Offset Datum

Offset Design													Offset Site Error:	0.0 ft
Survey Program: 94-MWD													Offset Well Error:	0.0 ft
Reference		Offset		Semi Major Axis			Distance						Warning	
Measured Depth (ft)	Vertical Depth (ft)	Measured Depth (ft)	Vertical Depth (ft)	Reference (ft)	Offset (ft)	Highside Toolface (°)	Offset Wellbore Centre +N/-S (ft)	+E/-W (ft)	Between Centres (ft)	Between Ellipses (ft)	Minimum Separation (ft)	Separation Factor		
7,000.0	6,857.6	7,245.5	6,853.4	27.8	41.7	-46.34	382.0	-1,935.0	1,086.4	1,032.6	53.77	20.206		
7,100.0	6,957.6	7,342.8	6,950.7	27.9	41.8	-46.46	380.9	-1,936.9	1,086.9	1,033.0	53.95	20.146		
7,200.0	7,057.6	7,446.6	7,054.4	28.0	41.9	-46.58	379.7	-1,938.9	1,087.6	1,033.4	54.15	20.086		
7,300.0	7,157.6	7,550.1	7,157.9	28.1	42.0	-46.71	377.9	-1,940.9	1,087.8	1,033.5	54.34	20.020		
7,400.0	7,257.6	7,649.0	7,256.8	28.2	42.1	-46.80	376.8	-1,942.0	1,087.9	1,033.3	54.54	19.947		
7,500.0	7,357.6	7,743.0	7,350.8	28.3	42.2	-46.78	377.5	-1,942.2	1,088.5	1,033.7	54.77	19.874		
7,600.0	7,457.6	7,837.0	7,444.8	28.5	42.3	-46.69	379.5	-1,941.8	1,089.7	1,034.7	55.03	19.803		
7,700.0	7,557.6	7,939.3	7,547.0	28.6	42.4	-46.57	381.9	-1,941.3	1,090.9	1,035.6	55.30	19.726		
7,800.0	7,657.6	8,040.7	7,648.4	28.7	42.4	-46.47	384.0	-1,940.6	1,091.9	1,036.3	55.58	19.646		
7,900.0	7,757.6	8,070.0	7,677.7	28.8	42.5	-46.44	384.6	-1,940.5	1,095.1	1,039.3	55.75	19.644		
8,000.0	7,857.6	8,070.0	7,677.7	28.9	42.5	-46.44	384.6	-1,940.5	1,107.0	1,051.1	55.88	19.811		
8,100.0	7,957.6	8,070.0	7,677.7	29.1	42.5	-46.44	384.6	-1,940.5	1,127.6	1,071.6	56.01	20.134		
8,200.0	8,057.6	8,070.0	7,677.7	29.2	42.5	-46.44	384.6	-1,940.5	1,156.6	1,100.5	56.14	20.603		
8,200.4	8,058.0	8,070.0	7,677.7	29.2	42.5	-46.44	384.6	-1,940.5	1,156.8	1,100.6	56.14	20.605		

Company:	EnCana Oil & Gas Weld County CO	Local Co-ordinate Reference:	Well McPeek 2-8-10
Project:	SEC.10-T2N-R66W	TVD Reference:	WELL @ 5001.0ft (Original Well Elev)
Reference Site:	McPeek 2-8-10 Pad Sec.10-T2N-R66W	MD Reference:	WELL @ 5001.0ft (Original Well Elev)
Site Error:	0.0ft	North Reference:	True
Reference Well:	McPeek 2-8-10	Survey Calculation Method:	Minimum Curvature
Well Error:	0.0ft	Output errors are at	2.00 sigma
Reference Wellbore	Wellbore #1	Database:	Landmark
Reference Design:	Plan #1 (1-10-13)	Offset TVD Reference:	Offset Datum

Offset Design													Offset Site Error:	0.0ft	
Survey Program: 0-MWD													Offset Well Error:		0.0ft
Reference		Offset		Semi Major Axis			Distance						Warning		
Measured Depth (ft)	Vertical Depth (ft)	Measured Depth (ft)	Vertical Depth (ft)	Reference (ft)	Offset (ft)	Highside Toolface (°)	Offset Wellbore Centre +N/-S (ft)	+E/-W (ft)	Between Centres (ft)	Between Ellipses (ft)	Minimum Separation (ft)	Separation Factor			
0.0	0.0	0.0	0.0	0.0	0.0	49.05	7.3	8.4	11.1	11.1	0.00	N/A			
100.0	100.0	100.0	100.0	0.1	0.1	49.05	7.3	8.4	11.1	10.9	0.22	49.403			
200.0	200.0	200.0	200.0	0.3	0.3	49.05	7.3	8.4	11.1	10.4	0.67	16.468 CC			
300.0	300.0	300.3	300.3	0.5	0.6	155.58	7.0	6.7	11.2	10.1	1.10	10.198			
400.0	399.8	400.7	400.5	0.8	0.8	152.08	6.2	1.4	11.6	10.1	1.53	7.597 ES			
500.0	499.5	501.0	500.4	1.0	1.0	146.77	4.8	-7.2	12.4	10.4	1.99	6.202			
600.0	598.7	601.3	600.0	1.3	1.3	140.39	2.9	-19.3	13.5	11.0	2.51	5.389			
700.0	697.5	701.6	699.0	1.6	1.7	133.76	0.4	-34.9	15.3	12.1	3.12	4.883			
800.0	795.6	801.8	797.4	2.0	2.0	127.52	-2.6	-53.8	17.6	13.7	3.86	4.550			
900.0	893.1	902.0	895.0	2.5	2.5	122.04	-6.2	-76.1	20.5	15.8	4.74	4.323			
1,000.0	990.0	1,002.2	991.8	3.0	3.0	114.18	-10.2	-101.8	23.4	17.6	5.81	4.024			
1,100.0	1,087.0	1,102.1	1,087.3	3.5	3.6	100.63	-14.8	-130.7	26.2	19.2	7.05	3.719 SF			
1,200.0	1,184.0	1,201.6	1,181.3	4.0	4.3	83.87	-19.9	-162.8	30.9	22.7	8.18	3.777			
1,300.0	1,280.9	1,300.0	1,273.2	4.5	5.0	67.83	-25.4	-197.6	39.1	30.2	8.95	4.374			
1,400.0	1,377.9	1,398.0	1,363.4	5.0	5.8	54.98	-31.5	-235.4	51.6	42.2	9.41	5.486			
1,500.0	1,474.9	1,494.6	1,451.0	5.6	6.6	45.65	-37.8	-275.6	68.4	58.6	9.78	6.989			
1,600.0	1,571.9	1,590.4	1,536.5	6.1	7.5	38.97	-44.6	-318.3	88.9	78.8	10.16	8.750			
1,700.0	1,668.8	1,687.6	1,622.8	6.6	8.5	34.51	-51.6	-362.5	111.1	100.5	10.63	10.457			
1,800.0	1,765.8	1,784.8	1,709.1	7.1	9.4	31.54	-58.6	-406.6	133.8	122.6	11.17	11.979			
1,900.0	1,862.8	1,882.0	1,795.4	7.7	10.4	29.43	-65.7	-450.8	156.7	144.9	11.75	13.328			
2,000.0	1,959.7	1,979.2	1,881.7	8.2	11.3	27.86	-72.7	-495.0	179.7	167.3	12.37	14.525			
2,100.0	2,056.7	2,076.4	1,968.0	8.7	12.3	26.65	-79.7	-539.1	202.8	189.8	13.01	15.590			
2,200.0	2,153.7	2,173.6	2,054.3	9.3	13.3	25.68	-86.7	-583.3	226.0	212.4	13.66	16.542			
2,300.0	2,250.6	2,270.9	2,140.7	9.8	14.2	24.90	-93.7	-627.5	249.3	235.0	14.33	17.397			
2,400.0	2,347.6	2,368.1	2,227.0	10.3	15.2	24.25	-100.7	-671.6	272.6	257.6	15.00	18.168			
2,500.0	2,444.6	2,465.3	2,313.3	10.8	16.2	23.70	-107.8	-715.8	295.9	280.2	15.68	18.867			
2,600.0	2,541.6	2,562.5	2,399.6	11.4	17.2	23.23	-114.8	-760.0	319.3	302.9	16.37	19.502			
2,700.0	2,638.5	2,659.7	2,485.9	11.9	18.2	22.82	-121.8	-804.1	342.6	325.6	17.06	20.082			
2,800.0	2,735.5	2,756.9	2,572.2	12.4	19.1	22.47	-128.8	-848.3	366.0	348.2	17.75	20.614			
2,900.0	2,832.5	2,854.1	2,658.5	13.0	20.1	22.16	-135.8	-892.5	389.4	370.9	18.45	21.103			
3,000.0	2,929.4	2,951.3	2,744.8	13.5	21.1	21.88	-142.8	-936.6	412.8	393.6	19.15	21.554			
3,100.0	3,026.4	3,048.5	2,831.1	14.0	22.1	21.64	-149.9	-980.8	436.2	416.3	19.85	21.971			
3,200.0	3,123.4	3,145.7	2,917.4	14.6	23.1	21.42	-156.9	-1,025.0	459.6	439.0	20.56	22.358			
3,300.0	3,220.4	3,242.9	3,003.7	15.1	24.0	21.22	-163.9	-1,069.1	483.0	461.7	21.26	22.718			
3,400.0	3,317.3	3,340.1	3,090.1	15.6	25.0	21.04	-170.9	-1,113.3	506.4	484.4	21.97	23.054			
3,500.0	3,414.3	3,437.3	3,176.4	16.2	26.0	20.87	-177.9	-1,157.5	529.8	507.2	22.67	23.368			
3,600.0	3,511.3	3,534.5	3,262.7	16.7	27.0	20.72	-184.9	-1,201.6	553.3	529.9	23.38	23.661			
3,700.0	3,608.2	3,631.8	3,349.0	17.2	28.0	20.58	-192.0	-1,245.8	576.7	552.6	24.09	23.937			
3,800.0	3,705.2	3,729.0	3,435.3	17.8	28.9	20.45	-199.0	-1,290.0	600.1	575.3	24.80	24.196			
3,900.0	3,802.2	3,826.2	3,521.6	18.3	29.9	20.33	-206.0	-1,334.1	623.6	598.1	25.51	24.440			
4,000.0	3,899.1	3,923.4	3,607.9	18.8	30.9	20.22	-213.0	-1,378.3	647.0	620.8	26.23	24.671			
4,100.0	3,996.1	4,020.6	3,694.2	19.4	31.9	20.12	-220.0	-1,422.5	670.5	643.5	26.94	24.888			
4,200.0	4,093.1	4,117.8	3,780.5	19.9	32.9	20.03	-227.0	-1,466.6	693.9	666.2	27.65	25.094			
4,300.0	4,190.1	4,215.0	3,866.8	20.4	33.9	19.94	-234.1	-1,510.8	717.3	689.0	28.36	25.290			
4,400.0	4,287.0	4,312.2	3,953.1	20.9	34.8	19.86	-241.1	-1,555.0	740.8	711.7	29.08	25.475			
4,500.0	4,384.0	4,409.4	4,039.5	21.5	35.8	19.78	-248.1	-1,599.1	764.2	734.4	29.79	25.651			
4,600.0	4,481.0	4,506.6	4,125.8	22.0	36.8	19.70	-255.1	-1,643.3	787.7	757.2	30.51	25.818			
4,700.0	4,577.9	4,603.8	4,212.1	22.5	37.8	19.63	-262.1	-1,687.5	811.1	779.9	31.22	25.978			
4,800.0	4,674.9	4,701.0	4,298.4	23.1	38.8	19.57	-269.1	-1,731.6	834.6	802.6	31.94	26.130			
4,900.0	4,771.9	4,798.2	4,384.7	23.6	39.8	19.51	-276.2	-1,775.8	858.0	825.4	32.66	26.275			
5,000.0	4,868.9	4,895.4	4,471.0	24.1	40.8	19.45	-283.2	-1,820.0	881.5	848.1	33.37	26.414			
5,100.0	4,965.8	4,992.7	4,557.3	24.7	41.7	19.39	-290.2	-1,864.1	904.9	870.9	34.09	26.547			

CC - Min centre to center distance or convergent point, SF - min separation factor, ES - min ellipse separation

Company:	EnCana Oil & Gas Weld County CO	Local Co-ordinate Reference:	Well McPeek 2-8-10
Project:	SEC.10-T2N-R66W	TVD Reference:	WELL @ 5001.0ft (Original Well Elev)
Reference Site:	McPeek 2-8-10 Pad Sec.10-T2N-R66W	MD Reference:	WELL @ 5001.0ft (Original Well Elev)
Site Error:	0.0ft	North Reference:	True
Reference Well:	McPeek 2-8-10	Survey Calculation Method:	Minimum Curvature
Well Error:	0.0ft	Output errors are at	2.00 sigma
Reference Wellbore	Wellbore #1	Database:	Landmark
Reference Design:	Plan #1 (1-10-13)	Offset TVD Reference:	Offset Datum

Offset Design													Offset Site Error:	0.0 ft	
Survey Program: 0-MWD													Offset Well Error:		0.0 ft
Reference		Offset		Semi Major Axis			Distance						Warning		
Measured Depth (ft)	Vertical Depth (ft)	Measured Depth (ft)	Vertical Depth (ft)	Reference (ft)	Offset (ft)	Highside Toolface (°)	Offset Wellbore Centre +N/-S (ft)	+E/-W (ft)	Between Centres (ft)	Between Ellipses (ft)	Minimum Separation (ft)	Separation Factor			
5,200.0	5,063.0	5,089.7	4,643.5	25.2	42.7	19.43	-297.2	-1,908.2	929.1	894.3	34.74	26.741			
5,300.0	5,160.8	5,185.9	4,728.9	25.5	43.7	19.49	-304.1	-1,952.0	956.2	920.9	35.27	27.111			
5,400.0	5,259.4	5,281.2	4,813.5	25.8	44.7	19.51	-311.0	-1,995.2	986.4	950.7	35.72	27.612			
5,500.0	5,358.4	5,375.3	4,897.1	26.0	45.6	19.49	-317.8	-2,038.0	1,019.8	983.7	36.11	28.242			
5,600.0	5,457.9	5,468.3	4,979.6	26.2	46.6	19.45	-324.5	-2,080.3	1,056.3	1,019.9	36.43	28.998			
5,700.0	5,557.7	5,613.6	5,110.2	26.4	47.7	19.21	-334.5	-2,143.1	1,093.7	1,057.0	36.73	29.777			
5,800.0	5,657.6	5,764.5	5,249.1	26.5	48.8	18.96	-343.8	-2,201.5	1,129.5	1,092.5	36.95	30.571			
5,900.0	5,757.6	5,920.0	5,395.2	26.6	49.7	-89.18	-352.1	-2,253.9	1,162.9	1,125.6	37.23	31.234			
6,000.0	5,857.6	6,081.1	5,549.4	26.7	50.5	-89.58	-359.4	-2,299.8	1,191.4	1,153.8	37.62	31.673			
6,100.0	5,957.6	6,247.2	5,710.9	26.8	51.1	-89.88	-365.5	-2,338.2	1,214.5	1,176.5	38.01	31.951			
6,200.0	6,057.6	6,417.5	5,878.5	26.9	51.7	-90.11	-370.2	-2,367.9	1,232.0	1,193.6	38.41	32.076			
6,300.0	6,157.6	6,590.8	6,050.6	27.0	52.0	-90.25	-373.4	-2,388.0	1,243.6	1,204.8	38.79	32.058			
6,400.0	6,257.6	6,766.0	6,225.5	27.1	52.2	-90.32	-374.9	-2,397.7	1,249.1	1,210.0	39.15	31.908			
6,500.0	6,357.6	6,898.1	6,357.6	27.2	52.3	-90.33	-375.1	-2,398.7	1,249.7	1,210.2	39.45	31.676			
6,600.0	6,457.6	6,998.1	6,457.6	27.3	52.4	-90.33	-375.1	-2,398.7	1,249.7	1,210.0	39.72	31.461			
6,700.0	6,557.6	7,098.1	6,557.6	27.4	52.4	-90.33	-375.1	-2,398.7	1,249.7	1,209.7	39.99	31.247			
6,800.0	6,657.6	7,198.1	6,657.6	27.5	52.5	-90.33	-375.1	-2,398.7	1,249.7	1,209.4	40.27	31.034			
6,900.0	6,757.6	7,298.1	6,757.6	27.7	52.6	-90.33	-375.1	-2,398.7	1,249.7	1,209.1	40.55	30.821			
7,000.0	6,857.6	7,398.1	6,857.6	27.8	52.6	-90.33	-375.1	-2,398.7	1,249.7	1,208.9	40.83	30.609			
7,100.0	6,957.6	7,498.1	6,957.6	27.9	52.7	-90.33	-375.1	-2,398.7	1,249.7	1,208.6	41.11	30.397			
7,200.0	7,057.6	7,598.1	7,057.6	28.0	52.8	-90.33	-375.1	-2,398.7	1,249.7	1,208.3	41.40	30.187			
7,300.0	7,157.6	7,698.1	7,157.6	28.1	52.8	-90.33	-375.1	-2,398.7	1,249.7	1,208.0	41.69	29.977			
7,400.0	7,257.6	7,798.1	7,257.6	28.2	52.9	-90.33	-375.1	-2,398.7	1,249.7	1,207.7	41.98	29.768			
7,500.0	7,357.6	7,898.1	7,357.6	28.3	52.9	-90.33	-375.1	-2,398.7	1,249.7	1,207.4	42.28	29.560			
7,600.0	7,457.6	7,998.1	7,457.6	28.5	53.0	-90.33	-375.1	-2,398.7	1,249.7	1,207.1	42.57	29.353			
7,700.0	7,557.6	8,098.1	7,557.6	28.6	53.1	-90.33	-375.1	-2,398.7	1,249.7	1,206.8	42.87	29.147			
7,800.0	7,657.6	8,198.1	7,657.6	28.7	53.1	-90.33	-375.1	-2,398.7	1,249.7	1,206.5	43.18	28.943			
7,900.0	7,757.6	8,298.1	7,757.6	28.8	53.2	-90.33	-375.1	-2,398.7	1,249.7	1,206.2	43.48	28.739			
8,000.0	7,857.6	8,398.1	7,857.6	28.9	53.3	-90.33	-375.1	-2,398.7	1,249.7	1,205.9	43.79	28.537			
8,100.0	7,957.6	8,498.1	7,957.6	29.1	53.4	-90.33	-375.1	-2,398.7	1,249.7	1,205.6	44.10	28.337			
8,200.0	8,057.6	8,598.1	8,057.6	29.2	53.4	-90.33	-375.1	-2,398.7	1,249.7	1,205.3	44.41	28.137			
8,200.4	8,058.0	8,598.6	8,058.0	29.2	53.4	-90.33	-375.1	-2,398.7	1,249.7	1,205.3	44.42	28.136			

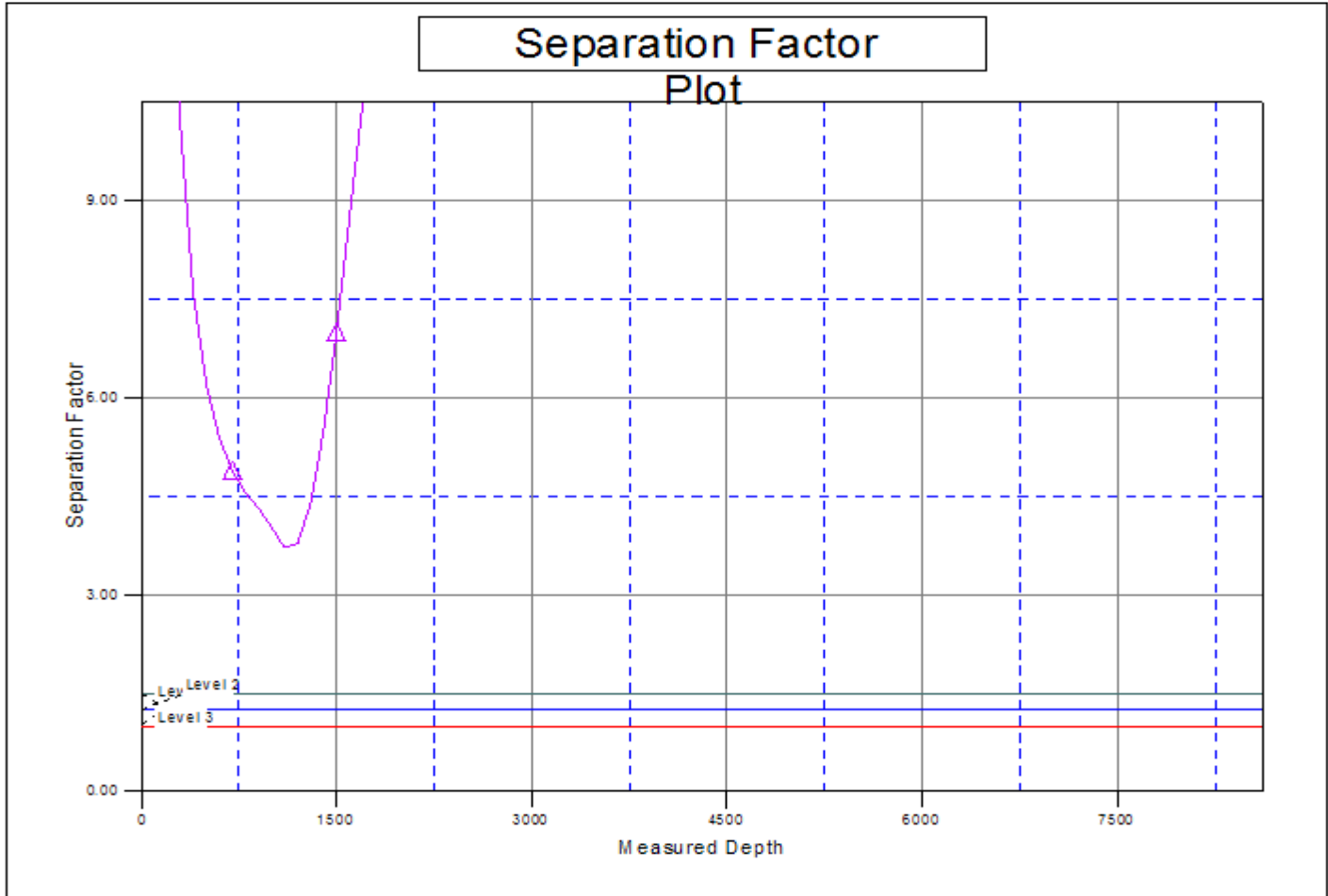
Company:	EnCana Oil & Gas Weld County CO	Local Co-ordinate Reference:	Well McPeek 2-8-10
Project:	SEC.10-T2N-R66W	TVD Reference:	WELL @ 5001.0ft (Original Well Elev)
Reference Site:	McPeek 2-8-10 Pad Sec.10-T2N-R66W	MD Reference:	WELL @ 5001.0ft (Original Well Elev)
Site Error:	0.0ft	North Reference:	True
Reference Well:	McPeek 2-8-10	Survey Calculation Method:	Minimum Curvature
Well Error:	0.0ft	Output errors are at	2.00 sigma
Reference Wellbore	Wellbore #1	Database:	Landmark
Reference Design:	Plan #1 (1-10-13)	Offset TVD Reference:	Offset Datum

Reference Depths are relative to WELL @ 5001.0ft (Original Well Elev) Coordinates are relative to: McPeek 2-8-10
 Offset Depths are relative to Offset Datum Coordinate System is US State Plane 1983, Colorado Northern Zone
 Central Meridian is -105.500000 ° Grid Convergence at Surface is: 0.48°



Company:	EnCana Oil & Gas Weld County CO	Local Co-ordinate Reference:	Well McPeek 2-8-10
Project:	SEC.10-T2N-R66W	TVD Reference:	WELL @ 5001.0ft (Original Well Elev)
Reference Site:	McPeek 2-8-10 Pad Sec.10-T2N-R66W	MD Reference:	WELL @ 5001.0ft (Original Well Elev)
Site Error:	0.0ft	North Reference:	True
Reference Well:	McPeek 2-8-10	Survey Calculation Method:	Minimum Curvature
Well Error:	0.0ft	Output errors are at	2.00 sigma
Reference Wellbore	Wellbore #1	Database:	Landmark
Reference Design:	Plan #1 (1-10-13)	Offset TVD Reference:	Offset Datum

Reference Depths are relative to WELL @ 5001.0ft (Original Well Elev) Coordinates are relative to: McPeek 2-8-10
 Offset Depths are relative to Offset Datum Coordinate System is US State Plane 1983, Colorado Northern Zone
 Central Meridian is -105.500000 ° Grid Convergence at Surface is: 0.48°



LEGEND

Peek 0-8-10, Wellbore #1, Plan #1 (1-10-13) V0 ~~X~~ McPeek 14-10 (Exist), Wellbore #1, Wellbore #1 V0