

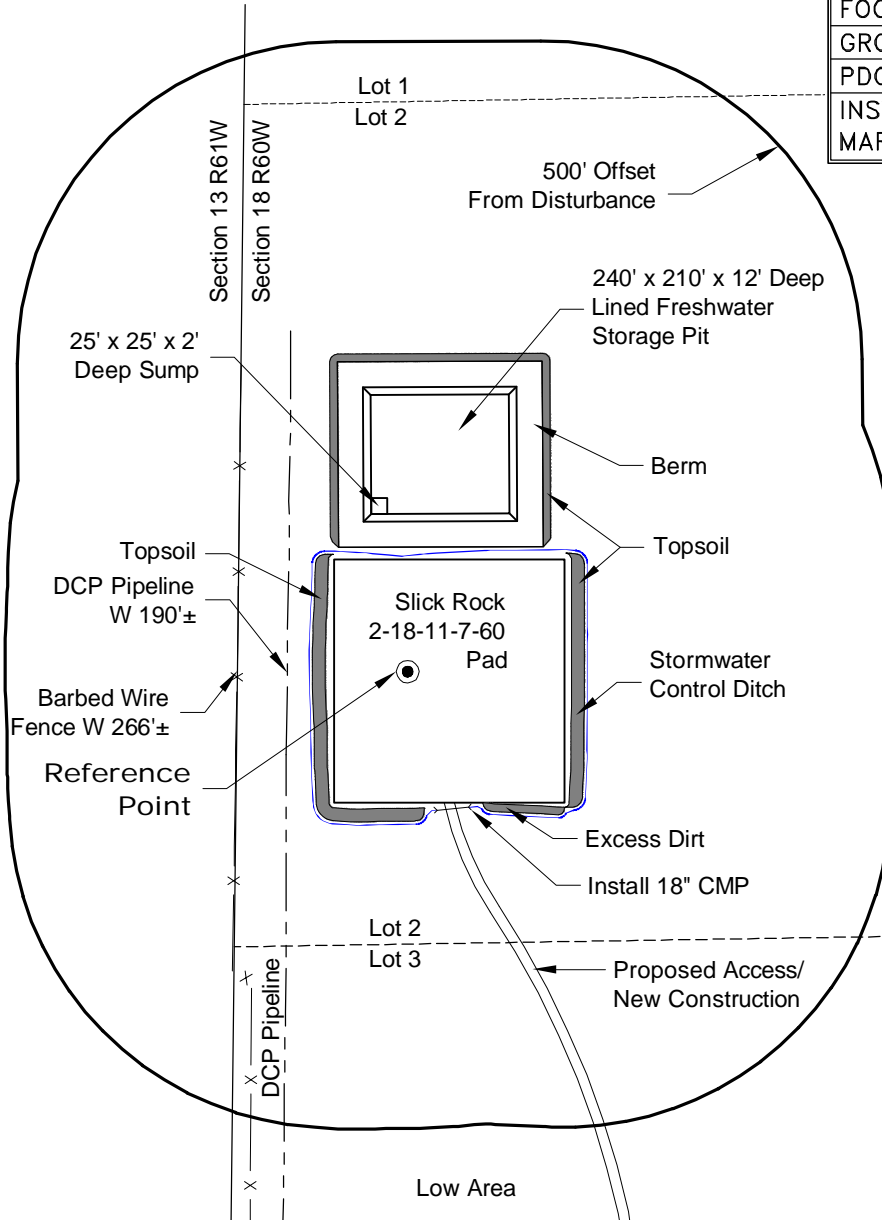
VEGETATION:
DRY LAND PASTURE

SURFACE USE:
GRAZING

LOCATION DRAWING

REFERENCE POINT

LATITUDE: 40.57634
LONGITUDE: -104.14513
FOOTAGE: 2206 FNL 266 FWL
GROUND ELEVATION: 4941.7
PDOP: 1.7 DATE: 1/9/2013
INSTRUMENT OPERATOR: MARC WOODARD



NOTE-DISTANCE TO NEAREST:
Property Line - W 266'
Public Road - WCR 80 - S 3100'±
Building - House N51°E 6,760'±
Railroad - S12°E 23.3 Miles
Powerline - S76°E 5335'±

DISTURBANCE ACREAGE:
4.4± DRILLING OPERATIONS
2.3± FRESHWATER STORAGE PIT
1.0± INTERIM RECLAIM

NOTE:
ALL PRODUCTION FACILITIES WILL BE ON PAD.

1/15/13



North

0 300 600
Graphic Scale in Feet
1" = 300'



LAND SURVEYING AND MAPPING
LAFAYETTE - WINTER PARK
Ph 303 666 0379 Fx 303 665 6320

CARRIZO NIOBRARA LLC
SLICK ROCK 2-18-7-60 PAD

LOT 2 SECTION 18 T7N R60W
6th PM WELD COUNTY COLORADO