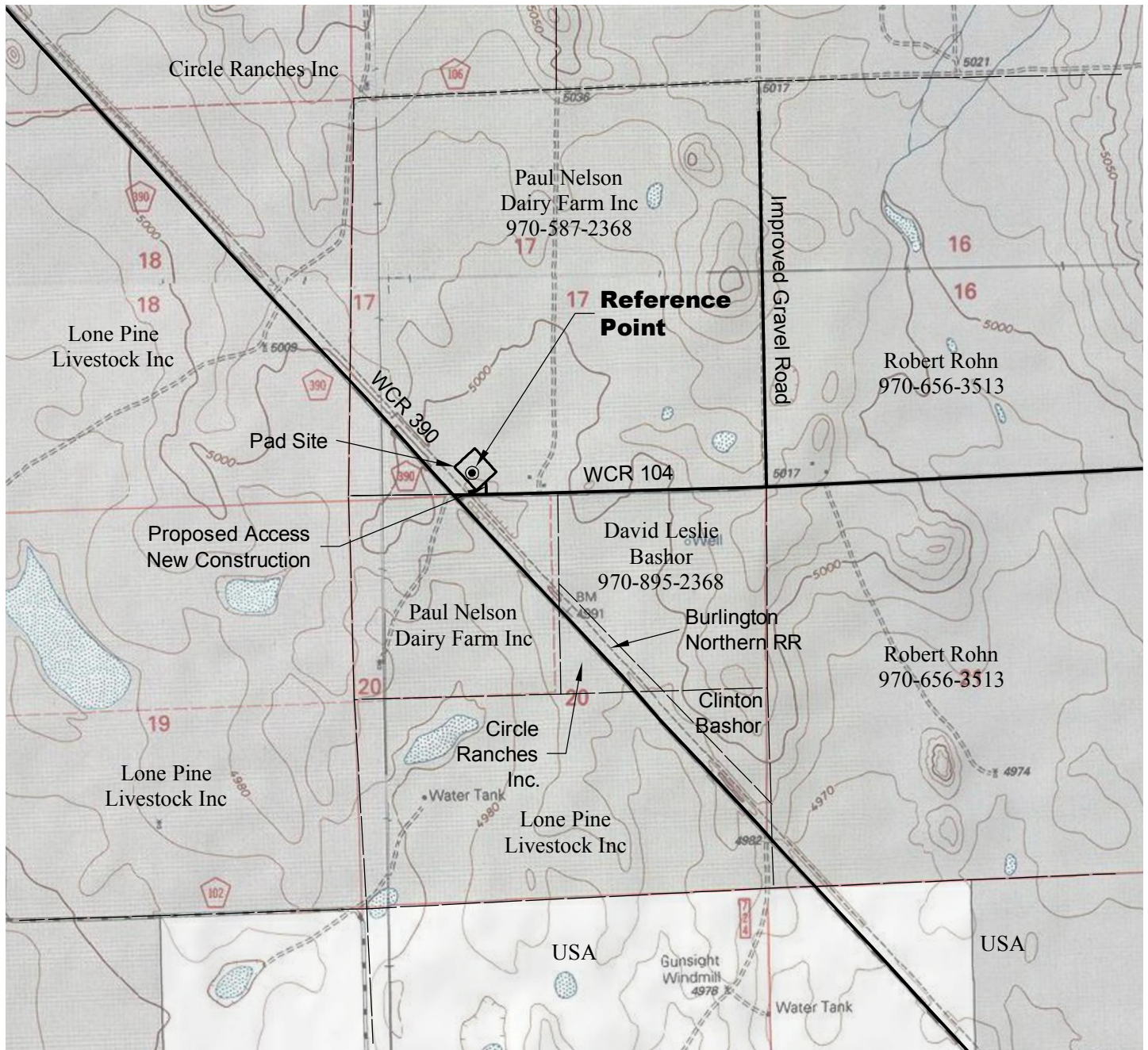


# ACCESS ROAD MAP

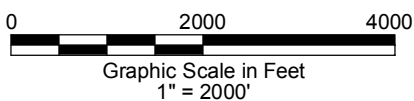


## DRIVING DIRECTIONS:

From Town of Keota, beginning at intersection  
of WCR 390 & WCR 103; North on WCR 390  
MP 3.5 Right at intersection of WCR 390 & WCR 104  
MP 3.6 Left onto access for Nelson 2-17-9-60 Pad



North



LAND SURVEYING AND MAPPING  
LAFAYETTE - WINTER PARK  
Ph 303 666 0379 Fx 303 665 6320

**CARRIZO NIOBRARA LLC**  
**NELSON 2-17-9-60 PAD**

**SE1/4 SW1/4 SECTION 17 T9N R60W**  
**6th PM WELD COUNTY COLORADO**

12/12/12