

The Road to Excellence Starts with Safety

Sold To #: 300721		Ship To #: 2916679		Quote #:		Sales Order #: 9335450	
Customer: WPX ENERGY ROCKY MOUNTAIN LLC-EBUS				Customer Rep: Hartl, Al			
Well Name: RWF		Well #: 11-36		API/UWI #: 05-045-20762			
Field: RULISON		City (SAP): RIFLE		County/Parish: Mesa		State: Colorado	
Lat: N 39.485 deg. OR N 39 deg. 29 min. 6.731 secs.				Long: W 107.84 deg. OR W -108 deg. 9 min. 36.382 secs.			
Contractor: NABORS 576		Rig/Platform Name/Num: NABORS 576					
Job Purpose: Cement Surface Casing							
Well Type: Development Well				Job Type: Cement Surface Casing			
Sales Person: MAYO, MARK				Srcv Supervisor: TRIPLETT, MICHEAL MBU ID Emp #: 447908			
Job Personnel							
HES Emp Name	Exp Hrs	Emp #	HES Emp Name	Exp Hrs	Emp #	HES Emp Name	Exp Hrs
BROWN, TRAVIS A	0.0	396848	DOUT, JACOB J	0.0	430298	HARDRICK, RAYMOND Frank	0.0
TRIPLETT, MICHEAL Anthony	0.0	447908					
Equipment							
HES Unit #	Distance-1 way	HES Unit #	Distance-1 way	HES Unit #	Distance-1 way	HES Unit #	Distance-1 way
10784080	60 mile	10804579	60 mile	10951251	60 mile	11360871	60 mile
11542767	60 mile						
Job Hours							
Date	On Location Hours	Operating Hours	Date	On Location Hours	Operating Hours	Date	On Location Hours
TOTAL		Total is the sum of each column separately					
Job				Job Times			
Formation Name				Date		Time	
Formation Depth (MD) Top		Bottom		Called Out		23 - Mar - 2012 03:30	
Form Type		BHST		On Location			
Job depth MD 1175. ft		Job Depth TVD 1175. ft		Job Started		23 - Mar - 2012 14:12	
Water Depth		Wk Ht Above Floor 4. ft		Job Completed		23 - Mar - 2012 15:00	
Perforation Depth (MD) From		To		Departed Loc		23 - Mar - 2012 15:35	
Well Data							
Description	New / Used	Max pressure psig	Size in	ID in	Weight lbm/ft	Thread	Grade
							Top MD ft
							Bottom MD ft
							Top TVD ft
							Bottom TVD ft
Sales/Rental/3rd Party (HES)							
Description				Qty	Qty uom	Depth	Supplier
PLUG,CMTG,TOP,9 5/8,HWE,8.16 MIN/9.06 MA				1	EA		
Tools and Accessories							
Type	Size	Qty	Make	Depth	Type	Size	Qty
Guide Shoe					Packer		
Float Shoe					Bridge Plug		
Float Collar					Retainer		
Insert Float							
Stage Tool							
Miscellaneous Materials							
Gelling Agt		Conc		Surfactant		Conc	Acid Type
Treatment Fld		Conc		Inhibitor		Conc	Sand Type
							Qty
							Conc
							%
Fluid Data							
Stage/Plug #: 1							
Fluid #	Stage Type	Fluid Name		Qty	Qty uom	Mixing Density lbm/gal	Yield ft3/sk
							Mix Fluid Gal/sk
							Rate bbl/min
							Total Mix Fluid Gal/sk

Stage/Plug #: 1									
Fluid #	Stage Type	Fluid Name	Qty	Qty uom	Mixing Density lbm/gal	Yield ft ³ /sk	Mix Fluid Gal/sk	Rate bbl/min	Total Mix Fluid Gal/sk
1	Fresh Water			bbl	8.33	.0	.0	.0	
2	Lead Cement	VERSACEM (TM) SYSTEM (452010)		sacks	12.3	2.38	13.75		13.75
3	Tail Cement	VERSACEM (TM) SYSTEM (452010)		sacks	12.8	2.11	11.75		11.75
4	Displacement Fluid			bbl	8.34	.0	.0	.0	
Calculated Values		Pressures		Volumes					
Displacement		Shut In: Instant		Lost Returns		Cement Slurry		Pad	
Top Of Cement		5 Min		Cement Returns		Actual Displacement		Treatment	
Frac Gradient		15 Min		Spacers		Load and Breakdown		Total Job	
Rates									
Circulating		Mixing		Displacement		Avg. Job			
Cement Left In Pipe		Amount	0 ft	Reason	Shoe Joint				
Frac Ring # 1 @	ID	Frac ring # 2 @	ID	Frac Ring # 3 @	ID	Frac Ring # 4 @	ID		
The Information Stated Herein Is Correct				Customer Representative Signature					

The Road to Excellence Starts with Safety

Sold To #: 300721	Ship To #: 2916679	Quote #:	Sales Order #: 9335450
Customer: WPX ENERGY ROCKY MOUNTAIN LLC-EBUS	Customer Rep: Hartl, Al		
Well Name: RWF	Well #: 11-36	API/UWI #: 05-045-20762	
Field: RULISON	City (SAP): RIFLE	County/Parish: Mesa	State: Colorado
Legal Description:			
Lat: N 39.485 deg. OR N 39 deg. 29 min. 6.731 secs.		Long: W 107.84 deg. OR W -108 deg. 9 min. 36.382 secs.	
Contractor: NABORS 576	Rig/Platform Name/Num: NABORS 576		
Job Purpose: Cement Surface Casing	Ticket Amount:		
Well Type: Development Well	Job Type: Cement Surface Casing		
Sales Person: MAYO, MARK	Srvc Supervisor: TRIPLETT, MICHEAL	MBU ID Emp #: 447908	

Activity Description	Date/Time	Cht #	Rate bbl/min	Volume bbl		Pressure psig		Comments
				Stage	Total	Tubing	Casing	
Call Out	03/23/2012 03:33							9 5/8 SURFACE, WPX, NABORS 576, RWF 11-36.
Pre-Convoy Safety Meeting	03/23/2012 06:00							ENTIRE CREW, OBSERVE ALL SAFE DRIVING PROCEDURES
Arrive At Loc	03/23/2012 08:00							ARRIVED EARLY. RIG JUST STARTING CASING.
Assessment Of Location Safety Meeting	03/23/2012 08:05							REVIEWED EMERGENCY PLAN, ASSESSED WORK AREA AND SPOTTED EQUIPMENT.
Pre-Rig Up Safety Meeting	03/23/2012 12:30							ENTIRE CREW, WALKED THROUGH RIG UP LOOKING FOR HAZARDS.
Rig-Up Equipment	03/23/2012 12:35							1 PICK UP, 1 HT400 PUMP TRUCK, 1 660 BULK CEMENT TRUCK, 1 QUICK LATCH HEAD WITH PLUG,
Pre-Job Safety Meeting	03/23/2012 13:55							ENTIRE CREW, CO REP AND RIG CREW.
Start Job	03/23/2012 14:12							TD 1175' TP 1166' SJ 43.36' FC 11122.64' MW 10.1 PPG, 9 5/8 32.3# CASING IN 13 1/2 HOLE.
Pump Water	03/23/2012 14:13		2	2			27.0	FILL LINES BEFORE TESTING
Activity Description	Date/Time	Cht	Rate bbl/min	Volume bbl		Pressure psig		Comments

Cementing Job Log

		#		Stage	Total	Tubing	Casing	
Pressure Test	03/23/2012 14:14						3000.0	HELD PRESSURE FOR 2 MIN, PRESSURE HELD, NO LEAKS.
Pump Spacer 1	03/23/2012 14:18		4	20			200.0	FRESH WATER, PUMPED AT 4 BPM UNTIL CEMENT TUB UP TO WEIGHT AND WEIGHED WITH SCALES, SPED RATE TO 8 BPM AT 10 BBLS GONE.
Pump Lead Cement	03/23/2012 14:24		8	67.8			300.0	160 SKS VERSACEM, 12.3 PPG, 2.38 CUFT/SK, 13.75 GAL/SK.
Pump Tail Cement	03/23/2012 14:33		8	60.1			300.0	160 SKS VERSACEM, 12.8 PPG, 2.11 CUFT/SK, 11.75 GAL/SK.
Shutdown	03/23/2012 14:40							
Drop Top Plug	03/23/2012 14:43							VARIFIED PLUG LEFT CONTAINER.
Pump Displacement	03/23/2012 14:44		10	88.4			525.0	FRESH WATER, CEMENT TO SURFACE AT 60 BBLS GONE, 25 BBLS OF CEMENT TO SURFACE. USED 20 LBS OF SUGAR.
Slow Rate	03/23/2012 14:53		2	78.4			238.0	SLOWED RATE TO 2 BPM TO BUMP PLUG.
Bump Plug	03/23/2012 14:58						260.0	PLUG LANDED AT 260PSI, BUMPED UP TO 760 PSI AND HELD FOR 1 MIN PER CO REP.
Check Floats	03/23/2012 14:59							FLOATS HELD, WHEN RELEASED PRESSURE GOT 1/2 BBL OF WATER BACK TO TRUCK.
End Job	03/23/2012 15:00							GOOD RETURNS THROUGHOUT, DID NOT RECIPROCATATE PIPE. NO DERRICK CHARGE, NO ADDITIONAL HOURS, 20#'S OF SUGAR USED.
Post-Job Safety Meeting (Pre Rig-Down)	03/23/2012 15:05							ENTIRE CREW

Sold To # : 300721

Ship To # :2916679

Quote # :

Sales Order # : 9335450

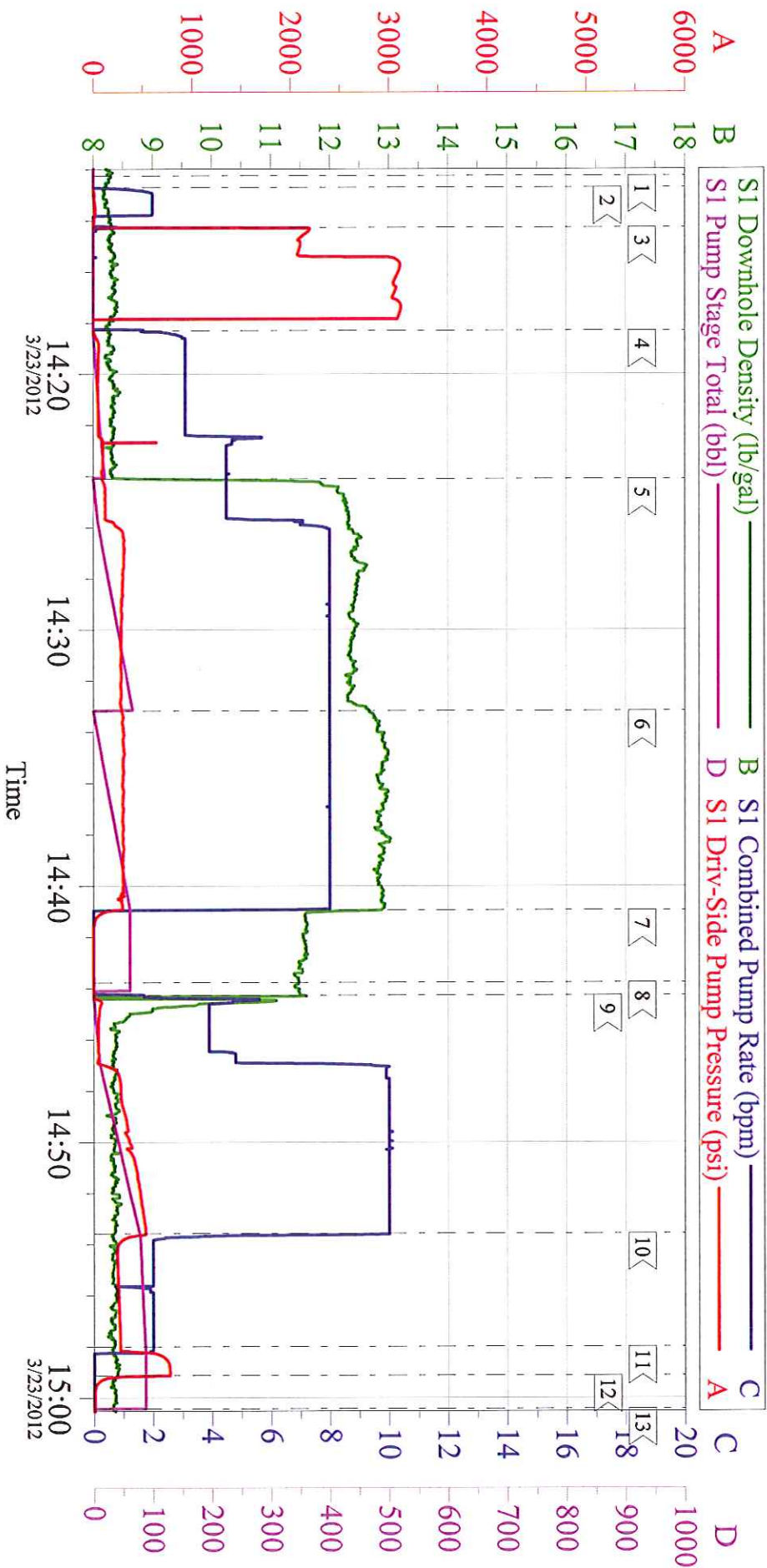
SUMMIT Version: 7.3.0021

Friday, March 23, 2012 03:10:00

Activity Description	Date/Time	Cht #	Rate bbl/ min	Volume bbl		Pressure psig		Comments
				Stage	Total	Tubing	Casing	
Rig-Down Equipment	03/23/2012 15:10							
Pre-Convoy Safety Meeting	03/23/2012 15:30							ENTIRE CREW, OBSERVE ALL SAFE DRIVING PROCEDURES
Crew Leave Location	03/23/2012 15:35							THANK YOU FOR USING HALLIBURTON, MIKE TRIPLETT AND CREW.

WPX - RWF-11-36

9 5/8" SURFACE

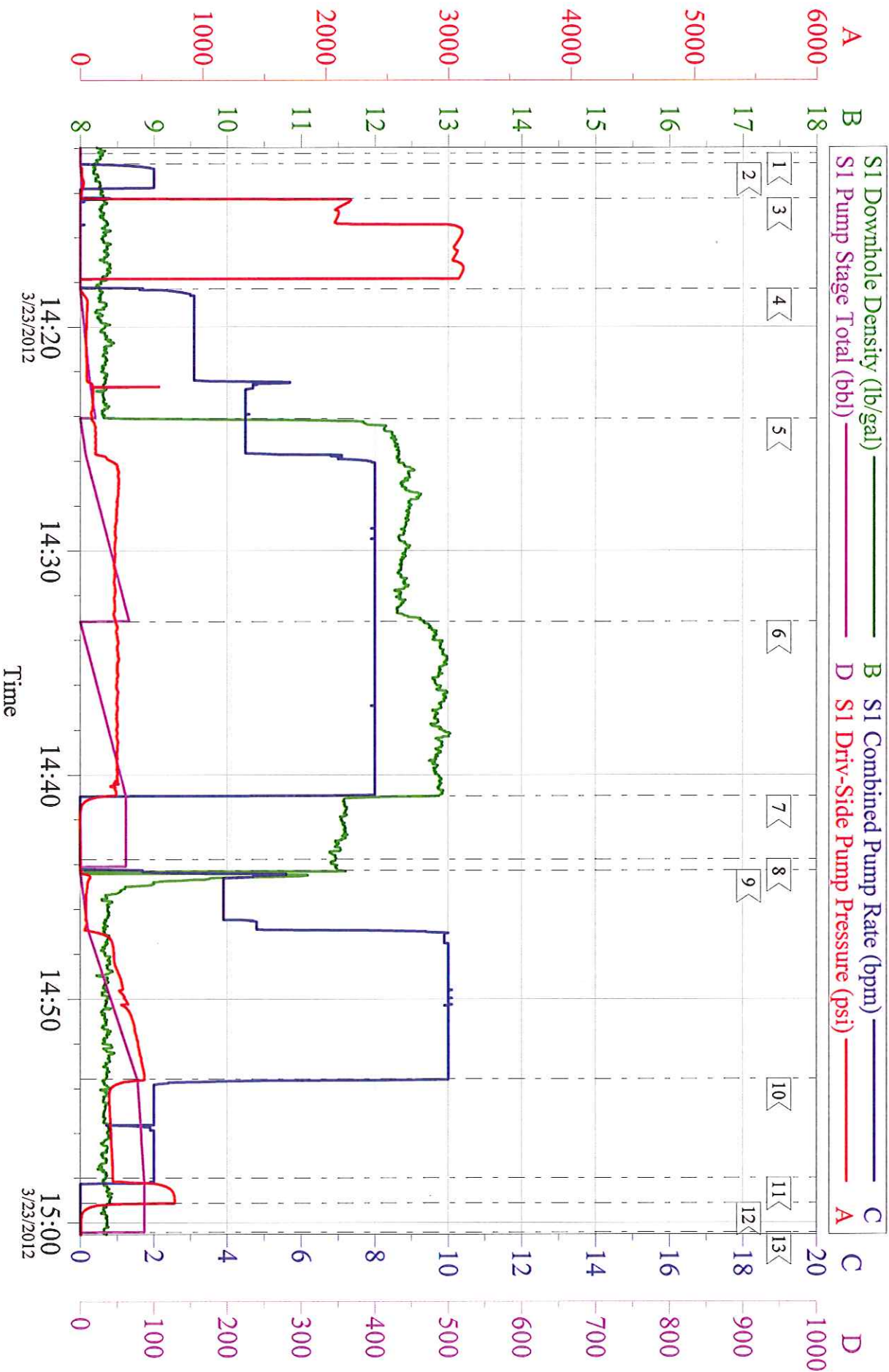


Customer: WPX
Well Description: RWF 11-36
Company Rep: AL HARTL

Job Date: 23-Mar-2012
Job Type: SURFACE
Cement Supervisor: MIKE TRIPLETT

Sales Order #: 9335450
ADC Used: YES
Elite #1: TRAVIS BROWN

WPX - RWF-11-36 9 5/8" SURFACE



Customer: WPX
Well Description: RWF 11-36
Company Rep: AL HARTL

Job Date: 23-Mar-2012
Job Type: SURFACE
Cement Supervisor: MIKE TRIPLETT

Sales Order #: 9335450
ADC Used: YES
Elite #1: TRAVIS BROWN