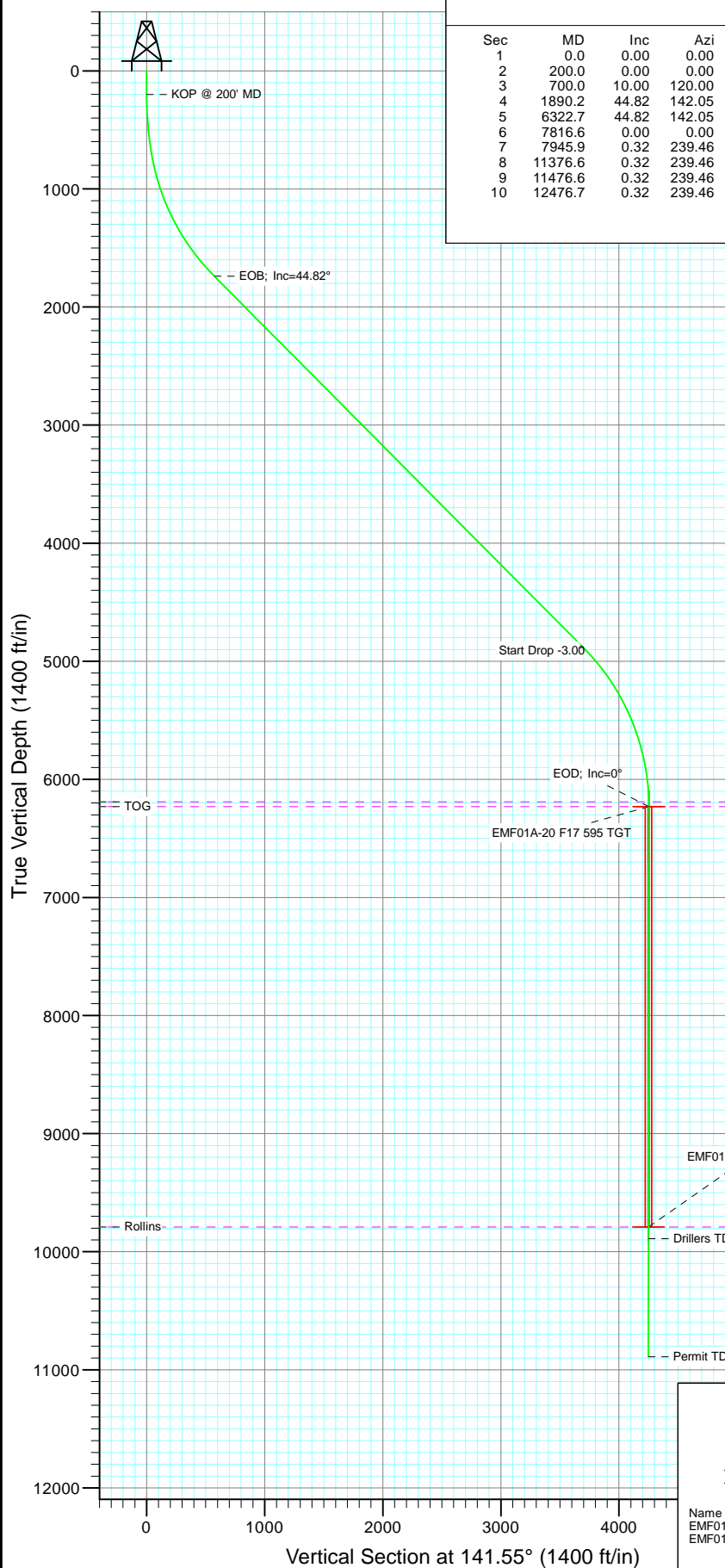


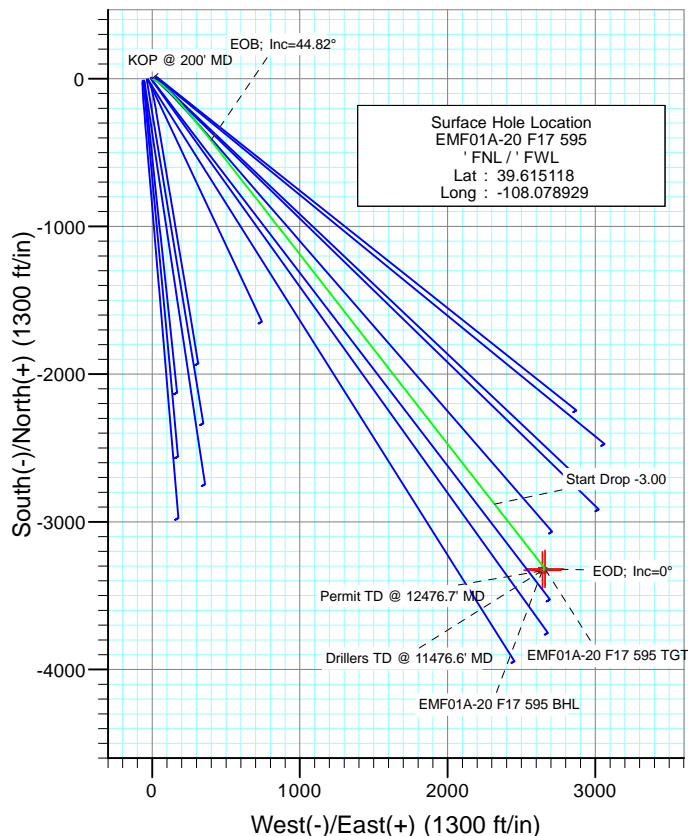


Project: North Piceance
Site: F17 595 Pad
Well: EMF01A-20 F17 595
Wellbore: DD
Design: Plan #4



SECTION DETAILS

Sec	MD	Inc	Azi	TVD	+N/-S	+E/-W	Dleg	TFace	VSect	Target
1	0.0	0.00	0.00	0.0	0.0	0.0	0.00	0.00	0.0	
2	200.0	0.00	0.00	200.0	0.0	0.0	0.00	0.00	0.0	
3	700.0	10.00	120.00	697.5	-21.8	37.7	2.00	120.00	40.5	
4	1890.2	44.82	142.05	1739.6	-417.1	396.8	3.00	26.96	573.4	
5	6322.7	44.82	142.05	4883.8	-2880.7	2318.1	0.00	0.00	3697.5	
6	7816.6	0.00	0.00	6230.0	-3318.4	2659.5	3.00	180.00	4252.6	EMF01A-20 F17 595 TGT
7	7945.9	0.32	239.46	6359.3	-3318.6	2659.2	0.25	239.46	4252.5	
8	11376.6	0.32	239.46	9790.0	-3328.4	2642.5	0.00	0.00	4249.8	EMF01A-20 F17 595 BHL
9	11476.6	0.32	239.46	9890.0	-3328.7	2642.0	0.00	0.00	4249.8	
10	12476.7	0.32	239.46	10890.0	-3331.6	2637.2	0.00	0.00	4249.0	



FORMATION TOP DETAILS

TVDPath	MDPath	Formation
6190.0	7776.6	WF
6230.0	7816.6	TOG
9790.0	11376.6	Rollins



Azimuths to True North
Magnetic North: 10.47°

Magnetic Field
Strength: 52350.0snT
Dip Angle: 65.84°
Date: 12/21/2010
Model: IGRF2010

Plan #4
EMF01A-20 F17 595
KBE2 @ 6330.0ft
North American Datum 1983
Well EMF01A-20 F17 595, True North

Type	Target	Azimuth	Origin	Type	N/S	E/W	From	TVD
Target	EMF01A-20 F17 595 BHL	141.55	Slot		0.0	0.0		0.0
Name	EMF01A-20 F17 595 TGT	TVD	+N/-S	+E/-W	Latitude	Longitude		
	EMF01A-20 F17 595 BHL	6230.0	-3318.4	2659.5	39.606007	-108.069490		
		9790.0	-3328.4	2642.5	39.605980	-108.069550		

Cathedral Energy Services

Planning Report

Database:	USA EDM 5000 Multi Users DB	Local Co-ordinate Reference:	Well EMF01A-20 F17 595
Company:	EnCana Oil & Gas (USA) Inc	TVD Reference:	KBE2 @ 6330.0ft
Project:	North Piceance	MD Reference:	KBE2 @ 6330.0ft
Site:	F17 595 Pad	North Reference:	True
Well:	EMF01A-20 F17 595	Survey Calculation Method:	Minimum Curvature
Wellbore:	DD		
Design:	Plan #4		

Project	North Piceance		
Map System:	US State Plane 1983	System Datum:	Mean Sea Level
Geo Datum:	North American Datum 1983		
Map Zone:	Colorado Central Zone		

Site		F17 595 Pad			
Site Position:		Northing:	1,659,259.22 ft	Latitude:	39° 36' 54.52 N
From:	Lat/Long	Easting:	2,273,585.37 ft	Longitude:	108° 4' 43.81 W
Position Uncertainty:	0.0 ft	Slot Radius:	13.200 in	Grid Convergence:	-1.63 °

Well	EMF01A-20 F17 595					
Well Position	+N/-S	0.0 ft	Northing:	1,659,250.21 ft	Latitude:	39° 36' 54.42 N
	+E/-W	0.0 ft	Easting:	2,273,558.87 ft	Longitude:	108° 4' 44.14 W
Position Uncertainty		0.0 ft	Wellhead Elevation:	ft	Ground Level:	6,308.0 ft

Wellbore	DD				
Magnetics	Model Name	Sample Date	Declination (°)	Dip Angle (°)	Field Strength (nT)
	IGRF2010	12/21/2010	10.47	65.84	52,350

Design	Plan #4			
Audit Notes:				
Version:	Phase:	PLAN	Tie On Depth:	0.0
Vertical Section:	Depth From (TVD) (ft)	+N/-S (ft)	+E/-W (ft)	Direction (°)
	0.0	0.0	0.0	141.55

Plan Sections										
Measured Depth (ft)	Inclination (°)	Azimuth (°)	Vertical Depth (ft)	+N/-S (ft)	+E/-W (ft)	Dogleg Rate (°/100ft)	Build Rate (°/100ft)	Turn Rate (°/100ft)	TFO (°)	Target
0.0	0.00	0.00	0.0	0.0	0.0	0.00	0.00	0.00	0.00	
200.0	0.00	0.00	200.0	0.0	0.0	0.00	0.00	0.00	0.00	
700.0	10.00	120.00	697.5	-21.8	37.7	2.00	2.00	0.00	120.00	
1,890.2	44.82	142.05	1,739.6	-417.1	396.8	3.00	2.93	1.85	26.96	
6,322.7	44.82	142.05	4,883.8	-2,880.7	2,318.1	0.00	0.00	0.00	0.00	
7,816.6	0.00	0.00	6,230.0	-3,318.4	2,659.5	3.00	-3.00	0.00	180.00	EMF01A-20 F17 595
7,945.9	0.32	239.46	6,359.3	-3,318.6	2,659.2	0.25	0.25	-93.22	239.46	
11,376.6	0.32	239.46	9,790.0	-3,328.4	2,642.5	0.00	0.00	0.00	0.00	EMF01A-20 F17 595
11,476.6	0.32	239.46	9,890.0	-3,328.7	2,642.0	0.00	0.00	0.00	0.00	
12,476.7	0.32	239.46	10,890.0	-3,331.6	2,637.2	0.00	0.00	0.00	0.00	

Cathedral Energy Services

Planning Report

Database:	USA EDM 5000 Multi Users DB	Local Co-ordinate Reference:	Well EMF01A-20 F17 595
Company:	EnCana Oil & Gas (USA) Inc	TVD Reference:	KBE2 @ 6330.0ft
Project:	North Piceance	MD Reference:	KBE2 @ 6330.0ft
Site:	F17 595 Pad	North Reference:	True
Well:	EMF01A-20 F17 595	Survey Calculation Method:	Minimum Curvature
Wellbore:	DD		
Design:	Plan #4		

Planned Survey

Measured Depth (ft)	Inclination (°)	Azimuth (°)	Vertical Depth (ft)	+N/-S (ft)	+E/-W (ft)	Vertical Section (ft)	Dogleg Rate (°/100ft)	Build Rate (°/100ft)	Comments / Formations
0.0	0.00	0.00	0.0	0.0	0.0	0.0	0.00	0.00	
100.0	0.00	0.00	100.0	0.0	0.0	0.0	0.00	0.00	
200.0	0.00	0.00	200.0	0.0	0.0	0.0	0.00	0.00	KOP @ 200' MD
300.0	2.00	120.00	300.0	-0.9	1.5	1.6	2.00	2.00	
400.0	4.00	120.00	399.8	-3.5	6.0	6.5	2.00	2.00	
500.0	6.00	120.00	499.5	-7.8	13.6	14.6	2.00	2.00	
600.0	8.00	120.00	598.7	-13.9	24.1	25.9	2.00	2.00	
700.0	10.00	120.00	697.5	-21.8	37.7	40.5	2.00	2.00	
800.0	12.75	126.17	795.5	-32.6	54.1	59.2	3.00	2.75	
900.0	15.58	130.16	892.4	-47.8	73.3	83.0	3.00	2.84	
1,000.0	18.47	132.93	988.1	-67.3	95.2	111.8	3.00	2.89	
1,100.0	21.39	134.98	1,082.1	-90.9	119.7	145.6	3.00	2.92	
1,200.0	24.33	136.55	1,174.2	-118.8	146.7	184.3	3.00	2.94	
1,300.0	27.28	137.80	1,264.2	-150.7	176.3	227.7	3.00	2.95	
1,400.0	30.24	138.82	1,351.9	-186.7	208.3	275.7	3.00	2.96	
1,500.0	33.21	139.68	1,436.9	-226.5	242.6	328.2	3.00	2.97	
1,600.0	36.18	140.41	1,519.1	-270.1	279.1	385.1	3.00	2.97	
1,700.0	39.15	141.04	1,598.3	-317.4	317.8	446.2	3.00	2.97	
1,800.0	42.13	141.60	1,674.2	-368.3	358.5	511.3	3.00	2.98	
1,890.2	44.82	142.05	1,739.6	-417.1	396.8	573.4	3.00	2.98	EOB; Inc=44.82°
1,900.0	44.82	142.05	1,746.6	-422.5	401.1	580.3	0.00	0.00	
2,000.0	44.82	142.05	1,817.5	-478.1	444.4	650.8	0.00	0.00	
2,100.0	44.82	142.05	1,888.4	-533.7	487.8	721.3	0.00	0.00	
2,200.0	44.82	142.05	1,959.4	-589.3	531.1	791.7	0.00	0.00	
2,300.0	44.82	142.05	2,030.3	-644.8	574.5	862.2	0.00	0.00	
2,400.0	44.82	142.05	2,101.2	-700.4	617.8	932.7	0.00	0.00	
2,500.0	44.82	142.05	2,172.2	-756.0	661.2	1,003.2	0.00	0.00	
2,600.0	44.82	142.05	2,243.1	-811.6	704.5	1,073.7	0.00	0.00	
2,700.0	44.82	142.05	2,314.1	-867.2	747.9	1,144.2	0.00	0.00	
2,800.0	44.82	142.05	2,385.0	-922.7	791.2	1,214.6	0.00	0.00	
2,900.0	44.82	142.05	2,455.9	-978.3	834.5	1,285.1	0.00	0.00	
3,000.0	44.82	142.05	2,526.9	-1,033.9	877.9	1,355.6	0.00	0.00	
3,100.0	44.82	142.05	2,597.8	-1,089.5	921.2	1,426.1	0.00	0.00	
3,200.0	44.82	142.05	2,668.7	-1,145.1	964.6	1,496.6	0.00	0.00	
3,300.0	44.82	142.05	2,739.7	-1,200.6	1,007.9	1,567.0	0.00	0.00	
3,400.0	44.82	142.05	2,810.6	-1,256.2	1,051.3	1,637.5	0.00	0.00	
3,500.0	44.82	142.05	2,881.5	-1,311.8	1,094.6	1,708.0	0.00	0.00	
3,600.0	44.82	142.05	2,952.5	-1,367.4	1,138.0	1,778.5	0.00	0.00	
3,700.0	44.82	142.05	3,023.4	-1,423.0	1,181.3	1,849.0	0.00	0.00	
3,800.0	44.82	142.05	3,094.3	-1,478.5	1,224.7	1,919.5	0.00	0.00	
3,900.0	44.82	142.05	3,165.3	-1,534.1	1,268.0	1,989.9	0.00	0.00	
4,000.0	44.82	142.05	3,236.2	-1,589.7	1,311.4	2,060.4	0.00	0.00	
4,100.0	44.82	142.05	3,307.2	-1,645.3	1,354.7	2,130.9	0.00	0.00	
4,200.0	44.82	142.05	3,378.1	-1,700.9	1,398.0	2,201.4	0.00	0.00	
4,300.0	44.82	142.05	3,449.0	-1,756.4	1,441.4	2,271.9	0.00	0.00	
4,400.0	44.82	142.05	3,520.0	-1,812.0	1,484.7	2,342.3	0.00	0.00	
4,500.0	44.82	142.05	3,590.9	-1,867.6	1,528.1	2,412.8	0.00	0.00	
4,600.0	44.82	142.05	3,661.8	-1,923.2	1,571.4	2,483.3	0.00	0.00	
4,700.0	44.82	142.05	3,732.8	-1,978.8	1,614.8	2,553.8	0.00	0.00	
4,800.0	44.82	142.05	3,803.7	-2,034.4	1,658.1	2,624.3	0.00	0.00	
4,900.0	44.82	142.05	3,874.6	-2,089.9	1,701.5	2,694.8	0.00	0.00	
5,000.0	44.82	142.05	3,945.6	-2,145.5	1,744.8	2,765.2	0.00	0.00	

Cathedral Energy Services

Planning Report

Database:	USA EDM 5000 Multi Users DB	Local Co-ordinate Reference:	Well EMF01A-20 F17 595
Company:	EnCana Oil & Gas (USA) Inc	TVD Reference:	KBE2 @ 6330.0ft
Project:	North Piceance	MD Reference:	KBE2 @ 6330.0ft
Site:	F17 595 Pad	North Reference:	True
Well:	EMF01A-20 F17 595	Survey Calculation Method:	Minimum Curvature
Wellbore:	DD		
Design:	Plan #4		

Planned Survey									
Measured Depth (ft)	Inclination (°)	Azimuth (°)	Vertical Depth (ft)	+N/-S (ft)	+E/-W (ft)	Vertical Section (ft)	Dogleg Rate (°/100ft)	Build Rate (°/100ft)	Comments / Formations
5,100.0	44.82	142.05	4,016.5	-2,201.1	1,788.2	2,835.7	0.00	0.00	
5,200.0	44.82	142.05	4,087.5	-2,256.7	1,831.5	2,906.2	0.00	0.00	
5,300.0	44.82	142.05	4,158.4	-2,312.3	1,874.8	2,976.7	0.00	0.00	
5,400.0	44.82	142.05	4,229.3	-2,367.8	1,918.2	3,047.2	0.00	0.00	
5,500.0	44.82	142.05	4,300.3	-2,423.4	1,961.5	3,117.6	0.00	0.00	
5,600.0	44.82	142.05	4,371.2	-2,479.0	2,004.9	3,188.1	0.00	0.00	
5,700.0	44.82	142.05	4,442.1	-2,534.6	2,048.2	3,258.6	0.00	0.00	
5,800.0	44.82	142.05	4,513.1	-2,590.2	2,091.6	3,329.1	0.00	0.00	
5,900.0	44.82	142.05	4,584.0	-2,645.7	2,134.9	3,399.6	0.00	0.00	
6,000.0	44.82	142.05	4,654.9	-2,701.3	2,178.3	3,470.1	0.00	0.00	
6,100.0	44.82	142.05	4,725.9	-2,756.9	2,221.6	3,540.5	0.00	0.00	
6,200.0	44.82	142.05	4,796.8	-2,812.5	2,265.0	3,611.0	0.00	0.00	
6,300.0	44.82	142.05	4,867.8	-2,868.1	2,308.3	3,681.5	0.00	0.00	
6,322.7	44.82	142.05	4,883.9	-2,880.7	2,318.1	3,697.5	0.00	0.00	Start Drop -3.00
6,400.0	42.50	142.05	4,939.8	-2,922.8	2,351.0	3,750.9	3.00	-3.00	
6,500.0	39.50	142.05	5,015.2	-2,974.5	2,391.3	3,816.5	3.00	-3.00	
6,600.0	36.50	142.05	5,094.0	-3,023.0	2,429.2	3,878.0	3.00	-3.00	
6,700.0	33.50	142.05	5,175.9	-3,068.2	2,464.4	3,935.4	3.00	-3.00	
6,800.0	30.50	142.05	5,260.7	-3,110.0	2,497.0	3,988.3	3.00	-3.00	
6,900.0	27.50	142.05	5,348.2	-3,148.2	2,526.8	4,036.8	3.00	-3.00	
7,000.0	24.50	142.05	5,438.1	-3,182.8	2,553.8	4,080.6	3.00	-3.00	
7,100.0	21.50	142.05	5,530.1	-3,213.6	2,577.8	4,119.7	3.00	-3.00	
7,200.0	18.50	142.05	5,624.1	-3,240.6	2,598.8	4,153.9	3.00	-3.00	
7,300.0	15.50	142.05	5,719.7	-3,263.6	2,616.8	4,183.1	3.00	-3.00	
7,400.0	12.50	142.05	5,816.7	-3,282.7	2,631.7	4,207.3	3.00	-3.00	
7,500.0	9.50	142.05	5,914.9	-3,297.7	2,643.4	4,226.4	3.00	-3.00	
7,600.0	6.50	142.05	6,013.9	-3,308.7	2,652.0	4,240.3	3.00	-3.00	
7,700.0	3.50	142.05	6,113.5	-3,315.6	2,657.3	4,249.0	3.00	-3.00	
7,776.6	1.20	142.05	6,190.0	-3,318.0	2,659.2	4,252.1	3.00	-3.00	WF
7,800.0	0.50	142.05	6,213.4	-3,318.3	2,659.5	4,252.5	3.00	-3.00	
7,816.6	0.00	0.00	6,230.0	-3,318.4	2,659.5	4,252.6	3.00	-3.00	EOD; Inc=0° - TOG - EMF01A-20 F17 595 TGT
7,900.0	0.21	239.46	6,313.4	-3,318.5	2,659.4	4,252.5	0.25	0.25	
7,945.9	0.32	239.46	6,359.3	-3,318.6	2,659.2	4,252.5	0.25	0.25	
8,000.0	0.32	239.46	6,413.4	-3,318.7	2,658.9	4,252.5	0.00	0.00	
8,100.0	0.32	239.46	6,513.4	-3,319.0	2,658.4	4,252.4	0.00	0.00	
8,200.0	0.32	239.46	6,613.4	-3,319.3	2,658.0	4,252.3	0.00	0.00	
8,300.0	0.32	239.46	6,713.4	-3,319.6	2,657.5	4,252.2	0.00	0.00	
8,400.0	0.32	239.46	6,813.4	-3,319.9	2,657.0	4,252.1	0.00	0.00	
8,500.0	0.32	239.46	6,913.4	-3,320.2	2,656.5	4,252.1	0.00	0.00	
8,600.0	0.32	239.46	7,013.4	-3,320.4	2,656.0	4,252.0	0.00	0.00	
8,700.0	0.32	239.46	7,113.4	-3,320.7	2,655.5	4,251.9	0.00	0.00	
8,800.0	0.32	239.46	7,213.4	-3,321.0	2,655.0	4,251.8	0.00	0.00	
8,900.0	0.32	239.46	7,313.4	-3,321.3	2,654.5	4,251.8	0.00	0.00	
9,000.0	0.32	239.46	7,413.4	-3,321.6	2,654.1	4,251.7	0.00	0.00	
9,100.0	0.32	239.46	7,513.4	-3,321.9	2,653.6	4,251.6	0.00	0.00	
9,200.0	0.32	239.46	7,613.4	-3,322.2	2,653.1	4,251.5	0.00	0.00	
9,300.0	0.32	239.46	7,713.4	-3,322.4	2,652.6	4,251.4	0.00	0.00	
9,400.0	0.32	239.46	7,813.4	-3,322.7	2,652.1	4,251.4	0.00	0.00	
9,500.0	0.32	239.46	7,913.4	-3,323.0	2,651.6	4,251.3	0.00	0.00	
9,600.0	0.32	239.46	8,013.4	-3,323.3	2,651.1	4,251.2	0.00	0.00	
9,700.0	0.32	239.46	8,113.4	-3,323.6	2,650.7	4,251.1	0.00	0.00	
9,800.0	0.32	239.46	8,213.4	-3,323.9	2,650.2	4,251.1	0.00	0.00	

Cathedral Energy Services

Planning Report

Database:	USA EDM 5000 Multi Users DB	Local Co-ordinate Reference:	Well EMF01A-20 F17 595
Company:	EnCana Oil & Gas (USA) Inc	TVD Reference:	KBE2 @ 6330.0ft
Project:	North Piceance	MD Reference:	KBE2 @ 6330.0ft
Site:	F17 595 Pad	North Reference:	True
Well:	EMF01A-20 F17 595	Survey Calculation Method:	Minimum Curvature
Wellbore:	DD		
Design:	Plan #4		

Planned Survey

Measured Depth (ft)	Inclination (°)	Azimuth (°)	Vertical Depth (ft)	+N/-S (ft)	+E/-W (ft)	Vertical Section (ft)	Dogleg Rate (°/100ft)	Build Rate (°/100ft)	Comments / Formations
9,900.0	0.32	239.46	8,313.4	-3,324.2	2,649.7	4,251.0	0.00	0.00	
10,000.0	0.32	239.46	8,413.4	-3,324.5	2,649.2	4,250.9	0.00	0.00	
10,100.0	0.32	239.46	8,513.4	-3,324.7	2,648.7	4,250.8	0.00	0.00	
10,200.0	0.32	239.46	8,613.4	-3,325.0	2,648.2	4,250.8	0.00	0.00	
10,300.0	0.32	239.46	8,713.4	-3,325.3	2,647.7	4,250.7	0.00	0.00	
10,400.0	0.32	239.46	8,813.4	-3,325.6	2,647.3	4,250.6	0.00	0.00	
10,500.0	0.32	239.46	8,913.4	-3,325.9	2,646.8	4,250.5	0.00	0.00	
10,600.0	0.32	239.46	9,013.4	-3,326.2	2,646.3	4,250.4	0.00	0.00	
10,700.0	0.32	239.46	9,113.4	-3,326.5	2,645.8	4,250.4	0.00	0.00	
10,800.0	0.32	239.46	9,213.4	-3,326.7	2,645.3	4,250.3	0.00	0.00	
10,900.0	0.32	239.46	9,313.4	-3,327.0	2,644.8	4,250.2	0.00	0.00	
11,000.0	0.32	239.46	9,413.4	-3,327.3	2,644.3	4,250.1	0.00	0.00	
11,100.0	0.32	239.46	9,513.4	-3,327.6	2,643.9	4,250.1	0.00	0.00	
11,200.0	0.32	239.46	9,613.4	-3,327.9	2,643.4	4,250.0	0.00	0.00	
11,300.0	0.32	239.46	9,713.4	-3,328.2	2,642.9	4,249.9	0.00	0.00	
11,376.6	0.32	239.46	9,790.0	-3,328.4	2,642.5	4,249.8	0.00	0.00	Rollins - EMF01A-20 F17 595 BHL
11,400.0	0.32	239.46	9,813.4	-3,328.5	2,642.4	4,249.8	0.00	0.00	
11,476.6	0.32	239.46	9,890.0	-3,328.7	2,642.0	4,249.8	0.00	0.00	Drillers TD @ 11476.6' MD
11,500.0	0.32	239.46	9,913.4	-3,328.8	2,641.9	4,249.7	0.00	0.00	
11,600.0	0.32	239.46	10,013.4	-3,329.0	2,641.4	4,249.7	0.00	0.00	
11,700.0	0.32	239.46	10,113.3	-3,329.3	2,640.9	4,249.6	0.00	0.00	
11,800.0	0.32	239.46	10,213.3	-3,329.6	2,640.5	4,249.5	0.00	0.00	
11,900.0	0.32	239.46	10,313.3	-3,329.9	2,640.0	4,249.4	0.00	0.00	
12,000.0	0.32	239.46	10,413.3	-3,330.2	2,639.5	4,249.4	0.00	0.00	
12,100.0	0.32	239.46	10,513.3	-3,330.5	2,639.0	4,249.3	0.00	0.00	
12,200.0	0.32	239.46	10,613.3	-3,330.8	2,638.5	4,249.2	0.00	0.00	
12,300.0	0.32	239.46	10,713.3	-3,331.0	2,638.0	4,249.1	0.00	0.00	
12,400.0	0.32	239.46	10,813.3	-3,331.3	2,637.5	4,249.0	0.00	0.00	
12,476.7	0.32	239.46	10,890.0	-3,331.6	2,637.2	4,249.0	0.00	0.00	

Targets

Target Name	Dip Angle (°)	Dip Dir. (°)	TVD (ft)	+N/-S (ft)	+E/-W (ft)	Northing (ft)	Easting (ft)	Latitude	Longitude
- hit/miss target									
- Shape									
EMF01A-20 F17 595 TC - plan hits target center - Point	0.00	0.00	6,230.0	-3,318.4	2,659.5	1,655,857.68	2,276,123.11	39° 36' 21.63 N	108° 4' 10.16 W
EMF01A-20 F17 595 BH - plan hits target center - Rectangle (sides W30.0 H50.0 D0.0)	0.00	0.00	9,790.0	-3,328.4	2,642.5	1,655,848.14	2,276,105.85	39° 36' 21.53 N	108° 4' 10.38 W

Cathedral Energy Services

Planning Report

Database:	USA EDM 5000 Multi Users DB	Local Co-ordinate Reference:	Well EMF01A-20 F17 595
Company:	EnCana Oil & Gas (USA) Inc	TVD Reference:	KBE2 @ 6330.0ft
Project:	North Piceance	MD Reference:	KBE2 @ 6330.0ft
Site:	F17 595 Pad	North Reference:	True
Well:	EMF01A-20 F17 595	Survey Calculation Method:	Minimum Curvature
Wellbore:	DD		
Design:	Plan #4		

Formations						
Measured Depth (ft)	Vertical Depth (ft)	Name	Lithology	Dip (°)	Dip Direction (°)	
7,776.6	6,190.0	WF		0.00		
7,816.6	6,230.0	TOG		0.00		
11,376.6	9,790.0	Rollins		0.00		

Plan Annotations					
Measured Depth (ft)	Vertical Depth (ft)	Local Coordinates			
		+N/-S (ft)	+E/-W (ft)	Comment	
200.0	200.0	0.0	0.0	KOP @ 200' MD	
1,890.2	1,739.6	-21.8	37.7	EOB; Inc=44.82°	
6,322.7	4,883.8	-417.1	396.8	Start Drop -3.00	
7,816.6	6,230.0	-2,880.7	2,318.1	EOD; Inc=0°	
11,476.6	9,890.0	-3,318.4	2,659.5	Drillers TD @ 11476.6' MD	
12,476.7	10,890.0	-3,318.6	2,659.2	Permit TD @ 12476.7' MD	

EnCana Oil & Gas (USA) Inc

North Piceance

F17 595 Pad

EMF01A-20 F17 595

DD

Plan #4

Anticollision Report

20 February, 2011