

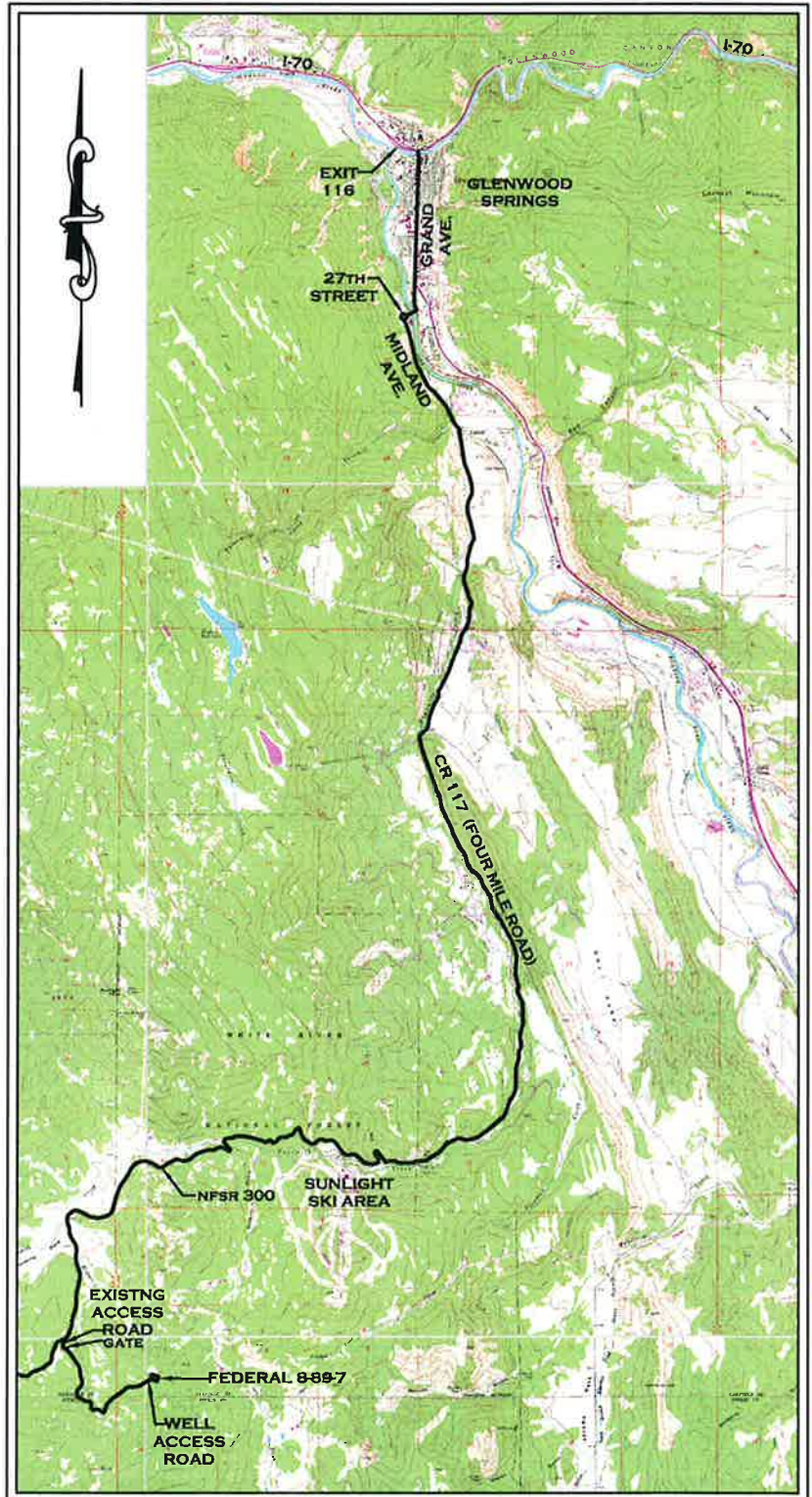
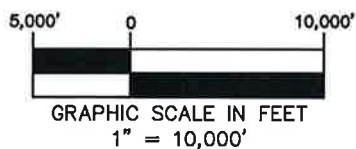
SG INTEREST I, LTD.

FEDERAL 8-89-7 #1

SW1/4 OF SECTION 7, TOWNSHIP 8 SOUTH, RANGE 89 WEST OF THE 6TH P.M.
COUNTY OF GARFIELD, STATE OF COLORADO

ACCESS DESCRIPTION

FROM INTERSTATE - 70 EXIT 116
(GLENWOOD SPRINGS); THEN FOLLOW
ALONG (SOUTH) ON GRAND AVENUE
(COLORADO STATE HIGHWAY NO. 82)
 ± 1.6 MILES, THEN TURN RIGHT (WEST)
ON 27TH STREET ± 0.30 MILES
THROUGH THE ROUNDABOUT ONTO
MIDLAND AVENUE, HEAD SOUTH AND
CONTINUE ON MIDLAND AVENUE ± 1.3
MILES TO THE INTERSECTION OF
MIDLAND AVE. AND COUNTY ROAD 117
(4 MILE ROAD), CONTINUE RIGHT ONTO
COUNTY ROAD 117 ± 8.1 MILES TO
NATIONAL FOREST SERVICE ROAD 300
(AKA CR 117), TURN RIGHT ON
NATIONAL FOREST SERVICE ROAD 300
 ± 7.2 MILES, BEAR LEFT ONTO EXISTING
ACCESS ROAD ± 0.2 MILES TO METAL
GATE, CONTINUE (SOUTHEASTERLY)
ALONG FEDERAL 8-89-7 EXISTING
ACCESS ROAD ± 1.6 MILES, BEAR LEFT
(NORTHEASTERLY) TO WELL PAD
FEDERAL 8-89-7 $\pm 250'$.



HIGH COUNTRY ENGINEERING, INC.



1517 BLAKE AVENUE, STE 101
GLENWOOD SPRINGS, CO 81601
PHONE (970) 945-8676
FAX (970) 945-2555

WWW.HCENG.COM

DRAWN BY:
RPK/CAS

SCALE:
N/A

CHECKED BY:
FWH

PROJECT NO:
2121655.04

DATE:
AUGUST 13, 2012

FILE:
J:/SDSKPROJ/212/1655-04/DWG/1655.04.DWG

WELL LOCATION PLAT
PREPARED FOR:

SG INTERESTS I, LTD.

FEDERAL 8-89-7 #1