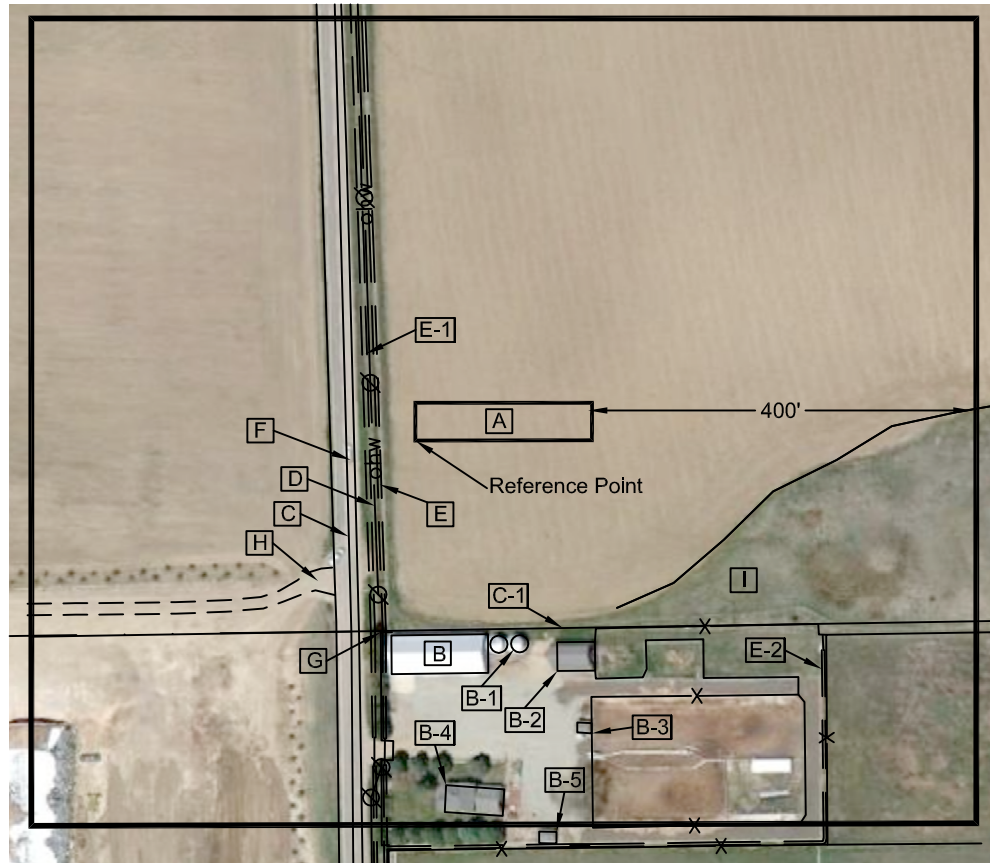


Nearest:  
 Building: 202' south  
 Public Road: 64' west  
 Property Line: 72' west  
 Above Ground Utility: 45' west  
 Railroad: 3,618' southeast

# Location Drawing

**Reference Point Data:**  
 Southwest corner of the  
 Area of Disturbance (proposed  
 facility pads)  
 Latitude: N 40.22635°  
 Longitude: W 105.01709°  
 FNL: 2439'  
 FWL: 72'  
 EL: 5075'  
 PDOP: 2.2

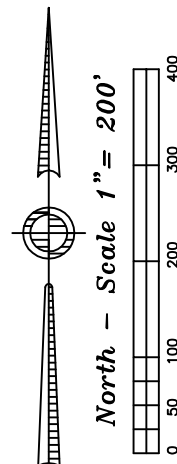


Field observations taken  
 on 12/18/12 by operator  
 John Rice.

**Distances listed below  
 are measured from the  
 Southwest Corner of the  
 Area of Disturbance (proposed facility pads)**

**Legend:**  
 ☉ - power pole  
 — ohw — - overhead power line  
 — X — - fence line

- [A] Area of Disturbance (proposed facility pads)
- [B] building 202' south
- [B-1] silos 220' southeast
- [B-2] building 257' southeast
- [B-3] building 338' southeast
- [B-4] building 360' southeast
- [B-5] building 4277' southeast
- [C] property line 72' west
- [C-1] property line 198' south
- [D] overhead power line 45' west
- [E] concrete irrigation ditch 37' west
- [E-1] concrete irrigation ditch 48' west
- [E-2] concrete irrigation ditch 476' southeast
- [F] Weld county road 5, 64' west
- [G] fence 203' southwest
- [H] access 158' southwest
- [I] apparent wetlands 307' southeast



**State SWNW  
 Proposed Facility Drawing**

Improvements extending  
 400' from disturbance

Township 3 North, Range 68 West,  
 Section 16: SW $\frac{1}{4}$  NW $\frac{1}{4}$   
 Weld County, Colorado

December 18, 2012

**JR Land Surveying, LLC**  
 8114 Northstar Drive  
 Windsor, Colorado 80528  
 P. 970-576-4641