

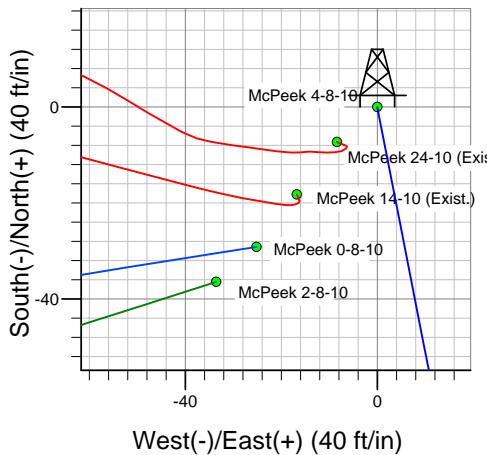
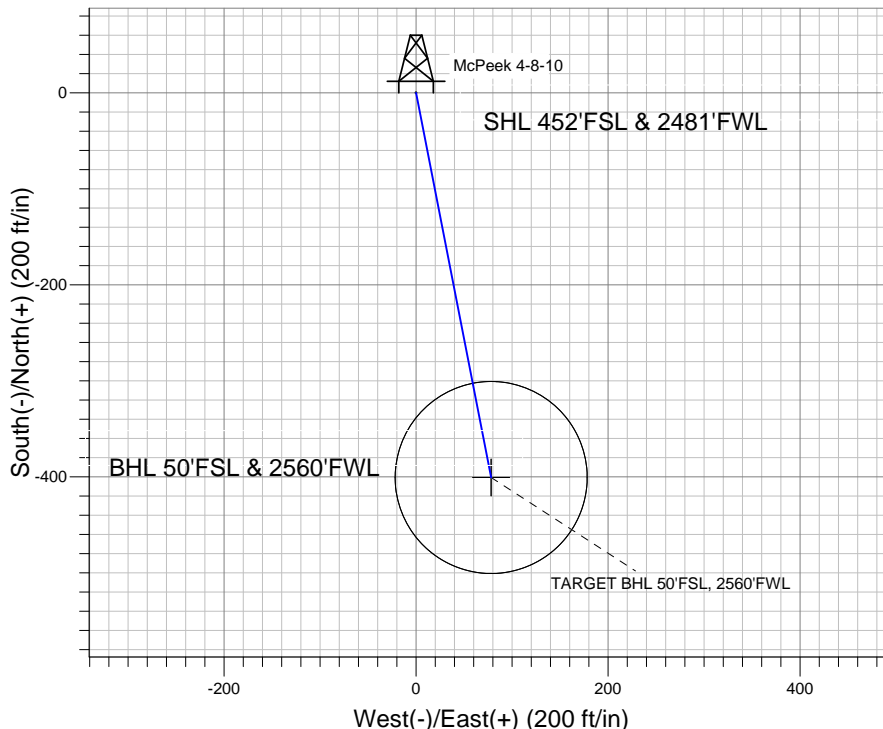
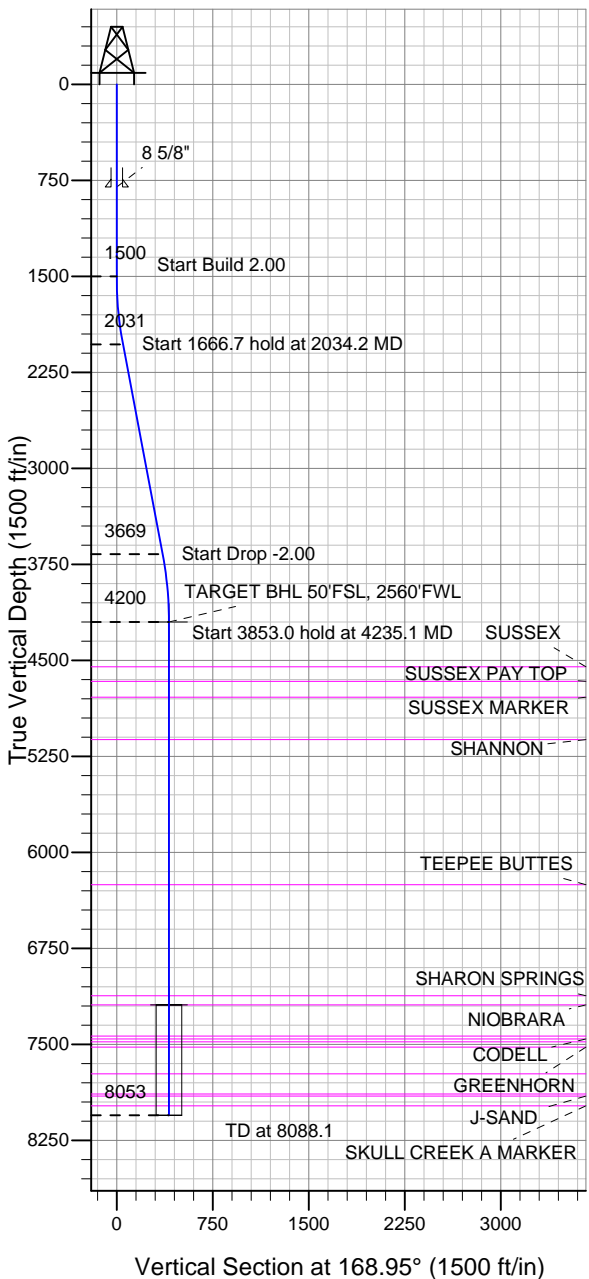
ENSIGN

Directional

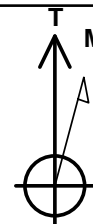
Well Name: McPeek 4-8-10

Surface Location: McPeek 2-8-10 Pad Sec.10-T2N-R66W
 North American Datum 1983 US State Plane 1983 Colorado Northern Zone
 Ground Elevation: 4988.0
 +N/-S +E/-W Northing Easting Latitude Longitude Slot
 0.0 0.0 1297118.49 3205778.07 40.146640 -104.763890
 Original Well Elev WELL @ 5001.0ft (Original Well Elev)

EnCana Oil & Gas Weld County CO



McPeek 2-8-10 Pad Sec.10-T2N-R66W
 McPeek 4-8-10
 Plan #1 (1-10-13)



Azimuths to True North
 Magnetic North: 8.63°

Magnetic Field
 Strength: 52831.3snT
 Dip Angle: 66.79°
 Date: 1/10/2013
 Model: IGRF2010

WELLBORE TARGET DETAILS (LAT/LONG)

Name	TVD	+N/-S	+E/-W	Latitude	Longitude	Shape
TARGET BHL 50'FSL, 2560'FWL	4200.0	-400.7	78.3	40.145540	-104.763610	Point
TARGET CIRCLE 50'FSL & 2560'FWL	7191.0	-400.7	78.3	40.145540	-104.763610	Circle (Radius: 100.0)

SECTION DETAILS

Sec	MD	Inc	Azi	TVD	+N/-S	+E/-W	DLeg	TFace	VSec	Target
1	0.0	0.00	0.00	0.0	0.0	0.0	0.00	0.00	0.0	
2	1500.0	0.00	0.00	1500.0	0.0	0.0	0.00	0.00	0.0	
3	2034.2	10.68	168.95	2031.1	-48.7	9.5	2.00	168.95	49.7	
4	3700.9	10.68	168.95	3668.9	-352.0	68.8	0.00	0.00	358.6	
5	4235.1	0.00	0.00	4200.0	-400.7	78.3	2.00	180.00	408.3	TARGET BHL 50'FSL, 2560'FWL
6	8088.1	0.00	0.00	8053.0	-400.7	78.3	0.00	0.00	408.3	



Directional

EnCana Oil & Gas Weld County CO

SEC.10-T2N-R66W

McPeck 2-8-10 Pad Sec.10-T2N-R66W

McPeck 4-8-10

Wellbore #1

Plan: Plan #1 (1-10-13)

Standard Planning Report

14 January, 2013

Plan Sections										
Measured Depth (ft)	Inclination (°)	Azimuth (°)	Vertical Depth (ft)	+N/-S (ft)	+E/-W (ft)	Dogleg Rate (°/100ft)	Build Rate (°/100ft)	Turn Rate (°/100ft)	TFO (°)	Target
0.0	0.00	0.00	0.0	0.0	0.0	0.00	0.00	0.00	0.00	
1,500.0	0.00	0.00	1,500.0	0.0	0.0	0.00	0.00	0.00	0.00	
2,034.2	10.68	168.95	2,031.1	-48.7	9.5	2.00	2.00	0.00	168.95	
3,700.9	10.68	168.95	3,668.9	-352.0	68.8	0.00	0.00	0.00	0.00	
4,235.1	0.00	0.00	4,200.0	-400.7	78.3	2.00	-2.00	0.00	180.00	TARGET BHL 50'F
8,088.1	0.00	0.00	8,053.0	-400.7	78.3	0.00	0.00	0.00	0.00	

Database:	Landmark	Local Co-ordinate Reference:	Well McPeek 4-8-10
Company:	EnCana Oil & Gas Weld County CO	TVD Reference:	WELL @ 5001.0ft (Original Well Elev)
Project:	SEC.10-T2N-R66W	MD Reference:	WELL @ 5001.0ft (Original Well Elev)
Site:	McPeek 2-8-10 Pad Sec.10-T2N-R66W	North Reference:	True
Well:	McPeek 4-8-10	Survey Calculation Method:	Minimum Curvature
Wellbore:	Wellbore #1		
Design:	Plan #1 (1-10-13)		

Planned Survey									
Measured Depth (ft)	Inclination (°)	Azimuth (°)	Vertical Depth (ft)	+N/-S (ft)	+E/-W (ft)	Vertical Section (ft)	Dogleg Rate (°/100ft)	Build Rate (°/100ft)	Turn Rate (°/100ft)
0.0	0.00	0.00	0.0	0.0	0.0	0.0	0.00	0.00	0.00
40.0	0.00	0.00	40.0	0.0	0.0	0.0	0.00	0.00	0.00
80.0	0.00	0.00	80.0	0.0	0.0	0.0	0.00	0.00	0.00
120.0	0.00	0.00	120.0	0.0	0.0	0.0	0.00	0.00	0.00
160.0	0.00	0.00	160.0	0.0	0.0	0.0	0.00	0.00	0.00
200.0	0.00	0.00	200.0	0.0	0.0	0.0	0.00	0.00	0.00
240.0	0.00	0.00	240.0	0.0	0.0	0.0	0.00	0.00	0.00
280.0	0.00	0.00	280.0	0.0	0.0	0.0	0.00	0.00	0.00
320.0	0.00	0.00	320.0	0.0	0.0	0.0	0.00	0.00	0.00
360.0	0.00	0.00	360.0	0.0	0.0	0.0	0.00	0.00	0.00
400.0	0.00	0.00	400.0	0.0	0.0	0.0	0.00	0.00	0.00
440.0	0.00	0.00	440.0	0.0	0.0	0.0	0.00	0.00	0.00
480.0	0.00	0.00	480.0	0.0	0.0	0.0	0.00	0.00	0.00
520.0	0.00	0.00	520.0	0.0	0.0	0.0	0.00	0.00	0.00
560.0	0.00	0.00	560.0	0.0	0.0	0.0	0.00	0.00	0.00
600.0	0.00	0.00	600.0	0.0	0.0	0.0	0.00	0.00	0.00
640.0	0.00	0.00	640.0	0.0	0.0	0.0	0.00	0.00	0.00
680.0	0.00	0.00	680.0	0.0	0.0	0.0	0.00	0.00	0.00
720.0	0.00	0.00	720.0	0.0	0.0	0.0	0.00	0.00	0.00
760.0	0.00	0.00	760.0	0.0	0.0	0.0	0.00	0.00	0.00
800.0	0.00	0.00	800.0	0.0	0.0	0.0	0.00	0.00	0.00
8 5/8"									
840.0	0.00	0.00	840.0	0.0	0.0	0.0	0.00	0.00	0.00
880.0	0.00	0.00	880.0	0.0	0.0	0.0	0.00	0.00	0.00
920.0	0.00	0.00	920.0	0.0	0.0	0.0	0.00	0.00	0.00
960.0	0.00	0.00	960.0	0.0	0.0	0.0	0.00	0.00	0.00
1,000.0	0.00	0.00	1,000.0	0.0	0.0	0.0	0.00	0.00	0.00
1,040.0	0.00	0.00	1,040.0	0.0	0.0	0.0	0.00	0.00	0.00
1,080.0	0.00	0.00	1,080.0	0.0	0.0	0.0	0.00	0.00	0.00
1,120.0	0.00	0.00	1,120.0	0.0	0.0	0.0	0.00	0.00	0.00
1,160.0	0.00	0.00	1,160.0	0.0	0.0	0.0	0.00	0.00	0.00
1,200.0	0.00	0.00	1,200.0	0.0	0.0	0.0	0.00	0.00	0.00
1,240.0	0.00	0.00	1,240.0	0.0	0.0	0.0	0.00	0.00	0.00
1,280.0	0.00	0.00	1,280.0	0.0	0.0	0.0	0.00	0.00	0.00
1,320.0	0.00	0.00	1,320.0	0.0	0.0	0.0	0.00	0.00	0.00
1,360.0	0.00	0.00	1,360.0	0.0	0.0	0.0	0.00	0.00	0.00
1,400.0	0.00	0.00	1,400.0	0.0	0.0	0.0	0.00	0.00	0.00
1,440.0	0.00	0.00	1,440.0	0.0	0.0	0.0	0.00	0.00	0.00
1,480.0	0.00	0.00	1,480.0	0.0	0.0	0.0	0.00	0.00	0.00
1,500.0	0.00	0.00	1,500.0	0.0	0.0	0.0	0.00	0.00	0.00
1,520.0	0.40	168.95	1,520.0	-0.1	0.0	0.1	2.00	2.00	0.00
1,560.0	1.20	168.95	1,560.0	-0.6	0.1	0.6	2.00	2.00	0.00
1,600.0	2.00	168.95	1,600.0	-1.7	0.3	1.7	2.00	2.00	0.00
1,640.0	2.80	168.95	1,639.9	-3.4	0.7	3.4	2.00	2.00	0.00
1,680.0	3.60	168.95	1,679.9	-5.5	1.1	5.7	2.00	2.00	0.00
1,720.0	4.40	168.95	1,719.8	-8.3	1.6	8.4	2.00	2.00	0.00
1,760.0	5.20	168.95	1,759.6	-11.6	2.3	11.8	2.00	2.00	0.00
1,800.0	6.00	168.95	1,799.5	-15.4	3.0	15.7	2.00	2.00	0.00
1,840.0	6.80	168.95	1,839.2	-19.8	3.9	20.2	2.00	2.00	0.00
1,880.0	7.60	168.95	1,878.9	-24.7	4.8	25.2	2.00	2.00	0.00
1,920.0	8.40	168.95	1,918.5	-30.2	5.9	30.7	2.00	2.00	0.00
1,960.0	9.20	168.95	1,958.0	-36.2	7.1	36.9	2.00	2.00	0.00
2,000.0	10.00	168.95	1,997.5	-42.7	8.3	43.5	2.00	2.00	0.00
2,034.2	10.68	168.95	2,031.1	-48.7	9.5	49.7	2.00	2.00	0.00

Database:	Landmark	Local Co-ordinate Reference:	Well McPeek 4-8-10
Company:	EnCana Oil & Gas Weld County CO	TVD Reference:	WELL @ 5001.0ft (Original Well Elev)
Project:	SEC.10-T2N-R66W	MD Reference:	WELL @ 5001.0ft (Original Well Elev)
Site:	McPeek 2-8-10 Pad Sec.10-T2N-R66W	North Reference:	True
Well:	McPeek 4-8-10	Survey Calculation Method:	Minimum Curvature
Wellbore:	Wellbore #1		
Design:	Plan #1 (1-10-13)		

Planned Survey									
Measured Depth (ft)	Inclination (°)	Azimuth (°)	Vertical Depth (ft)	+N/-S (ft)	+E/-W (ft)	Vertical Section (ft)	Dogleg Rate (°/100ft)	Build Rate (°/100ft)	Turn Rate (°/100ft)
2,040.0	10.68	168.95	2,036.8	-49.8	9.7	50.7	0.00	0.00	0.00
2,080.0	10.68	168.95	2,076.1	-57.1	11.1	58.2	0.00	0.00	0.00
2,120.0	10.68	168.95	2,115.4	-64.4	12.6	65.6	0.00	0.00	0.00
2,160.0	10.68	168.95	2,154.7	-71.6	14.0	73.0	0.00	0.00	0.00
2,200.0	10.68	168.95	2,194.0	-78.9	15.4	80.4	0.00	0.00	0.00
2,240.0	10.68	168.95	2,233.3	-86.2	16.8	87.8	0.00	0.00	0.00
2,280.0	10.68	168.95	2,272.6	-93.5	18.3	95.2	0.00	0.00	0.00
2,320.0	10.68	168.95	2,312.0	-100.7	19.7	102.6	0.00	0.00	0.00
2,360.0	10.68	168.95	2,351.3	-108.0	21.1	110.1	0.00	0.00	0.00
2,400.0	10.68	168.95	2,390.6	-115.3	22.5	117.5	0.00	0.00	0.00
2,440.0	10.68	168.95	2,429.9	-122.6	23.9	124.9	0.00	0.00	0.00
2,480.0	10.68	168.95	2,469.2	-129.9	25.4	132.3	0.00	0.00	0.00
2,520.0	10.68	168.95	2,508.5	-137.1	26.8	139.7	0.00	0.00	0.00
2,560.0	10.68	168.95	2,547.8	-144.4	28.2	147.1	0.00	0.00	0.00
2,600.0	10.68	168.95	2,587.1	-151.7	29.6	154.6	0.00	0.00	0.00
2,640.0	10.68	168.95	2,626.4	-159.0	31.1	162.0	0.00	0.00	0.00
2,680.0	10.68	168.95	2,665.7	-166.2	32.5	169.4	0.00	0.00	0.00
2,720.0	10.68	168.95	2,705.0	-173.5	33.9	176.8	0.00	0.00	0.00
2,760.0	10.68	168.95	2,744.3	-180.8	35.3	184.2	0.00	0.00	0.00
2,800.0	10.68	168.95	2,783.6	-188.1	36.7	191.6	0.00	0.00	0.00
2,840.0	10.68	168.95	2,822.9	-195.3	38.2	199.0	0.00	0.00	0.00
2,880.0	10.68	168.95	2,862.2	-202.6	39.6	206.5	0.00	0.00	0.00
2,920.0	10.68	168.95	2,901.6	-209.9	41.0	213.9	0.00	0.00	0.00
2,960.0	10.68	168.95	2,940.9	-217.2	42.4	221.3	0.00	0.00	0.00
3,000.0	10.68	168.95	2,980.2	-224.5	43.8	228.7	0.00	0.00	0.00
3,040.0	10.68	168.95	3,019.5	-231.7	45.3	236.1	0.00	0.00	0.00
3,080.0	10.68	168.95	3,058.8	-239.0	46.7	243.5	0.00	0.00	0.00
3,120.0	10.68	168.95	3,098.1	-246.3	48.1	250.9	0.00	0.00	0.00
3,160.0	10.68	168.95	3,137.4	-253.6	49.5	258.4	0.00	0.00	0.00
3,200.0	10.68	168.95	3,176.7	-260.8	51.0	265.8	0.00	0.00	0.00
3,240.0	10.68	168.95	3,216.0	-268.1	52.4	273.2	0.00	0.00	0.00
3,280.0	10.68	168.95	3,255.3	-275.4	53.8	280.6	0.00	0.00	0.00
3,320.0	10.68	168.95	3,294.6	-282.7	55.2	288.0	0.00	0.00	0.00
3,360.0	10.68	168.95	3,333.9	-290.0	56.6	295.4	0.00	0.00	0.00
3,400.0	10.68	168.95	3,373.2	-297.2	58.1	302.9	0.00	0.00	0.00
3,440.0	10.68	168.95	3,412.5	-304.5	59.5	310.3	0.00	0.00	0.00
3,480.0	10.68	168.95	3,451.8	-311.8	60.9	317.7	0.00	0.00	0.00
3,520.0	10.68	168.95	3,491.2	-319.1	62.3	325.1	0.00	0.00	0.00
3,560.0	10.68	168.95	3,530.5	-326.3	63.8	332.5	0.00	0.00	0.00
3,600.0	10.68	168.95	3,569.8	-333.6	65.2	339.9	0.00	0.00	0.00
3,640.0	10.68	168.95	3,609.1	-340.9	66.6	347.3	0.00	0.00	0.00
3,680.0	10.68	168.95	3,648.4	-348.2	68.0	354.8	0.00	0.00	0.00
3,700.9	10.68	168.95	3,668.9	-352.0	68.8	358.6	0.00	0.00	0.00
3,720.0	10.30	168.95	3,687.7	-355.4	69.4	362.1	2.00	-2.00	0.00
3,760.0	9.50	168.95	3,727.1	-362.1	70.7	369.0	2.00	-2.00	0.00
3,800.0	8.70	168.95	3,766.6	-368.4	72.0	375.3	2.00	-2.00	0.00
3,840.0	7.90	168.95	3,806.2	-374.0	73.1	381.1	2.00	-2.00	0.00
3,880.0	7.10	168.95	3,845.8	-379.1	74.1	386.3	2.00	-2.00	0.00
3,920.0	6.30	168.95	3,885.6	-383.7	75.0	391.0	2.00	-2.00	0.00
3,960.0	5.50	168.95	3,925.4	-387.8	75.7	395.1	2.00	-2.00	0.00
4,000.0	4.70	168.95	3,965.2	-391.3	76.4	398.7	2.00	-2.00	0.00
4,040.0	3.90	168.95	4,005.1	-394.2	77.0	401.7	2.00	-2.00	0.00
4,080.0	3.10	168.95	4,045.0	-396.6	77.5	404.1	2.00	-2.00	0.00
4,120.0	2.30	168.95	4,085.0	-398.4	77.8	406.0	2.00	-2.00	0.00

Database:	Landmark	Local Co-ordinate Reference:	Well McPeek 4-8-10
Company:	EnCana Oil & Gas Weld County CO	TVD Reference:	WELL @ 5001.0ft (Original Well Elev)
Project:	SEC.10-T2N-R66W	MD Reference:	WELL @ 5001.0ft (Original Well Elev)
Site:	McPeek 2-8-10 Pad Sec.10-T2N-R66W	North Reference:	True
Well:	McPeek 4-8-10	Survey Calculation Method:	Minimum Curvature
Wellbore:	Wellbore #1		
Design:	Plan #1 (1-10-13)		

Planned Survey									
Measured Depth (ft)	Inclination (°)	Azimuth (°)	Vertical Depth (ft)	+N/-S (ft)	+E/-W (ft)	Vertical Section (ft)	Dogleg Rate (°/100ft)	Build Rate (°/100ft)	Turn Rate (°/100ft)
4,160.0	1.50	168.95	4,124.9	-399.8	78.1	407.3	2.00	-2.00	0.00
4,200.0	0.70	168.95	4,164.9	-400.5	78.2	408.1	2.00	-2.00	0.00
4,235.1	0.00	0.00	4,200.0	-400.7	78.3	408.3	2.00	-2.00	0.00
4,240.0	0.00	0.00	4,204.9	-400.7	78.3	408.3	0.00	0.00	0.00
4,280.0	0.00	0.00	4,244.9	-400.7	78.3	408.3	0.00	0.00	0.00
4,320.0	0.00	0.00	4,284.9	-400.7	78.3	408.3	0.00	0.00	0.00
4,360.0	0.00	0.00	4,324.9	-400.7	78.3	408.3	0.00	0.00	0.00
4,400.0	0.00	0.00	4,364.9	-400.7	78.3	408.3	0.00	0.00	0.00
4,440.0	0.00	0.00	4,404.9	-400.7	78.3	408.3	0.00	0.00	0.00
4,480.0	0.00	0.00	4,444.9	-400.7	78.3	408.3	0.00	0.00	0.00
4,520.0	0.00	0.00	4,484.9	-400.7	78.3	408.3	0.00	0.00	0.00
4,560.0	0.00	0.00	4,524.9	-400.7	78.3	408.3	0.00	0.00	0.00
4,584.1	0.00	0.00	4,549.0	-400.7	78.3	408.3	0.00	0.00	0.00
SUSSEX									
4,600.0	0.00	0.00	4,564.9	-400.7	78.3	408.3	0.00	0.00	0.00
4,640.0	0.00	0.00	4,604.9	-400.7	78.3	408.3	0.00	0.00	0.00
4,680.0	0.00	0.00	4,644.9	-400.7	78.3	408.3	0.00	0.00	0.00
4,698.1	0.00	0.00	4,663.0	-400.7	78.3	408.3	0.00	0.00	0.00
SUSSEX PAY TOP									
4,720.0	0.00	0.00	4,684.9	-400.7	78.3	408.3	0.00	0.00	0.00
4,760.0	0.00	0.00	4,724.9	-400.7	78.3	408.3	0.00	0.00	0.00
4,800.0	0.00	0.00	4,764.9	-400.7	78.3	408.3	0.00	0.00	0.00
4,821.1	0.00	0.00	4,786.0	-400.7	78.3	408.3	0.00	0.00	0.00
SUSSEX MARKER									
4,840.0	0.00	0.00	4,804.9	-400.7	78.3	408.3	0.00	0.00	0.00
4,880.0	0.00	0.00	4,844.9	-400.7	78.3	408.3	0.00	0.00	0.00
4,920.0	0.00	0.00	4,884.9	-400.7	78.3	408.3	0.00	0.00	0.00
4,960.0	0.00	0.00	4,924.9	-400.7	78.3	408.3	0.00	0.00	0.00
5,000.0	0.00	0.00	4,964.9	-400.7	78.3	408.3	0.00	0.00	0.00
5,040.0	0.00	0.00	5,004.9	-400.7	78.3	408.3	0.00	0.00	0.00
5,080.0	0.00	0.00	5,044.9	-400.7	78.3	408.3	0.00	0.00	0.00
5,120.0	0.00	0.00	5,084.9	-400.7	78.3	408.3	0.00	0.00	0.00
5,152.1	0.00	0.00	5,117.0	-400.7	78.3	408.3	0.00	0.00	0.00
SHANNON									
5,160.0	0.00	0.00	5,124.9	-400.7	78.3	408.3	0.00	0.00	0.00
5,200.0	0.00	0.00	5,164.9	-400.7	78.3	408.3	0.00	0.00	0.00
5,240.0	0.00	0.00	5,204.9	-400.7	78.3	408.3	0.00	0.00	0.00
5,280.0	0.00	0.00	5,244.9	-400.7	78.3	408.3	0.00	0.00	0.00
5,320.0	0.00	0.00	5,284.9	-400.7	78.3	408.3	0.00	0.00	0.00
5,360.0	0.00	0.00	5,324.9	-400.7	78.3	408.3	0.00	0.00	0.00
5,400.0	0.00	0.00	5,364.9	-400.7	78.3	408.3	0.00	0.00	0.00
5,440.0	0.00	0.00	5,404.9	-400.7	78.3	408.3	0.00	0.00	0.00
5,480.0	0.00	0.00	5,444.9	-400.7	78.3	408.3	0.00	0.00	0.00
5,520.0	0.00	0.00	5,484.9	-400.7	78.3	408.3	0.00	0.00	0.00
5,560.0	0.00	0.00	5,524.9	-400.7	78.3	408.3	0.00	0.00	0.00
5,600.0	0.00	0.00	5,564.9	-400.7	78.3	408.3	0.00	0.00	0.00
5,640.0	0.00	0.00	5,604.9	-400.7	78.3	408.3	0.00	0.00	0.00
5,680.0	0.00	0.00	5,644.9	-400.7	78.3	408.3	0.00	0.00	0.00
5,720.0	0.00	0.00	5,684.9	-400.7	78.3	408.3	0.00	0.00	0.00
5,760.0	0.00	0.00	5,724.9	-400.7	78.3	408.3	0.00	0.00	0.00
5,800.0	0.00	0.00	5,764.9	-400.7	78.3	408.3	0.00	0.00	0.00
5,840.0	0.00	0.00	5,804.9	-400.7	78.3	408.3	0.00	0.00	0.00
5,880.0	0.00	0.00	5,844.9	-400.7	78.3	408.3	0.00	0.00	0.00

Database:	Landmark	Local Co-ordinate Reference:	Well McPeek 4-8-10
Company:	EnCana Oil & Gas Weld County CO	TVD Reference:	WELL @ 5001.0ft (Original Well Elev)
Project:	SEC.10-T2N-R66W	MD Reference:	WELL @ 5001.0ft (Original Well Elev)
Site:	McPeek 2-8-10 Pad Sec.10-T2N-R66W	North Reference:	True
Well:	McPeek 4-8-10	Survey Calculation Method:	Minimum Curvature
Wellbore:	Wellbore #1		
Design:	Plan #1 (1-10-13)		

Planned Survey									
Measured Depth (ft)	Inclination (°)	Azimuth (°)	Vertical Depth (ft)	+N/-S (ft)	+E/-W (ft)	Vertical Section (ft)	Dogleg Rate (°/100ft)	Build Rate (°/100ft)	Turn Rate (°/100ft)
5,920.0	0.00	0.00	5,884.9	-400.7	78.3	408.3	0.00	0.00	0.00
5,960.0	0.00	0.00	5,924.9	-400.7	78.3	408.3	0.00	0.00	0.00
6,000.0	0.00	0.00	5,964.9	-400.7	78.3	408.3	0.00	0.00	0.00
6,040.0	0.00	0.00	6,004.9	-400.7	78.3	408.3	0.00	0.00	0.00
6,080.0	0.00	0.00	6,044.9	-400.7	78.3	408.3	0.00	0.00	0.00
6,120.0	0.00	0.00	6,084.9	-400.7	78.3	408.3	0.00	0.00	0.00
6,160.0	0.00	0.00	6,124.9	-400.7	78.3	408.3	0.00	0.00	0.00
6,200.0	0.00	0.00	6,164.9	-400.7	78.3	408.3	0.00	0.00	0.00
6,240.0	0.00	0.00	6,204.9	-400.7	78.3	408.3	0.00	0.00	0.00
6,280.0	0.00	0.00	6,244.9	-400.7	78.3	408.3	0.00	0.00	0.00
6,286.1	0.00	0.00	6,251.0	-400.7	78.3	408.3	0.00	0.00	0.00
TEEPEE BUTTES									
6,320.0	0.00	0.00	6,284.9	-400.7	78.3	408.3	0.00	0.00	0.00
6,360.0	0.00	0.00	6,324.9	-400.7	78.3	408.3	0.00	0.00	0.00
6,400.0	0.00	0.00	6,364.9	-400.7	78.3	408.3	0.00	0.00	0.00
6,440.0	0.00	0.00	6,404.9	-400.7	78.3	408.3	0.00	0.00	0.00
6,480.0	0.00	0.00	6,444.9	-400.7	78.3	408.3	0.00	0.00	0.00
6,520.0	0.00	0.00	6,484.9	-400.7	78.3	408.3	0.00	0.00	0.00
6,560.0	0.00	0.00	6,524.9	-400.7	78.3	408.3	0.00	0.00	0.00
6,600.0	0.00	0.00	6,564.9	-400.7	78.3	408.3	0.00	0.00	0.00
6,640.0	0.00	0.00	6,604.9	-400.7	78.3	408.3	0.00	0.00	0.00
6,680.0	0.00	0.00	6,644.9	-400.7	78.3	408.3	0.00	0.00	0.00
6,720.0	0.00	0.00	6,684.9	-400.7	78.3	408.3	0.00	0.00	0.00
6,760.0	0.00	0.00	6,724.9	-400.7	78.3	408.3	0.00	0.00	0.00
6,800.0	0.00	0.00	6,764.9	-400.7	78.3	408.3	0.00	0.00	0.00
6,840.0	0.00	0.00	6,804.9	-400.7	78.3	408.3	0.00	0.00	0.00
6,880.0	0.00	0.00	6,844.9	-400.7	78.3	408.3	0.00	0.00	0.00
6,920.0	0.00	0.00	6,884.9	-400.7	78.3	408.3	0.00	0.00	0.00
6,960.0	0.00	0.00	6,924.9	-400.7	78.3	408.3	0.00	0.00	0.00
7,000.0	0.00	0.00	6,964.9	-400.7	78.3	408.3	0.00	0.00	0.00
7,040.0	0.00	0.00	7,004.9	-400.7	78.3	408.3	0.00	0.00	0.00
7,080.0	0.00	0.00	7,044.9	-400.7	78.3	408.3	0.00	0.00	0.00
7,120.0	0.00	0.00	7,084.9	-400.7	78.3	408.3	0.00	0.00	0.00
7,153.1	0.00	0.00	7,118.0	-400.7	78.3	408.3	0.00	0.00	0.00
SHARON SPRINGS									
7,160.0	0.00	0.00	7,124.9	-400.7	78.3	408.3	0.00	0.00	0.00
7,200.0	0.00	0.00	7,164.9	-400.7	78.3	408.3	0.00	0.00	0.00
7,226.1	0.00	0.00	7,191.0	-400.7	78.3	408.3	0.00	0.00	0.00
NIOBRARA									
7,240.0	0.00	0.00	7,204.9	-400.7	78.3	408.3	0.00	0.00	0.00
7,280.0	0.00	0.00	7,244.9	-400.7	78.3	408.3	0.00	0.00	0.00
7,320.0	0.00	0.00	7,284.9	-400.7	78.3	408.3	0.00	0.00	0.00
7,360.0	0.00	0.00	7,324.9	-400.7	78.3	408.3	0.00	0.00	0.00
7,400.0	0.00	0.00	7,364.9	-400.7	78.3	408.3	0.00	0.00	0.00
7,440.0	0.00	0.00	7,404.9	-400.7	78.3	408.3	0.00	0.00	0.00
7,469.1	0.00	0.00	7,434.0	-400.7	78.3	408.3	0.00	0.00	0.00
FT. HAYES									
7,480.0	0.00	0.00	7,444.9	-400.7	78.3	408.3	0.00	0.00	0.00
7,491.1	0.00	0.00	7,456.0	-400.7	78.3	408.3	0.00	0.00	0.00
CODELL									
7,514.1	0.00	0.00	7,479.0	-400.7	78.3	408.3	0.00	0.00	0.00
FAIRPORT									
7,520.0	0.00	0.00	7,484.9	-400.7	78.3	408.3	0.00	0.00	0.00

Database:	Landmark	Local Co-ordinate Reference:	Well McPeek 4-8-10
Company:	EnCana Oil & Gas Weld County CO	TVD Reference:	WELL @ 5001.0ft (Original Well Elev)
Project:	SEC.10-T2N-R66W	MD Reference:	WELL @ 5001.0ft (Original Well Elev)
Site:	McPeek 2-8-10 Pad Sec.10-T2N-R66W	North Reference:	True
Well:	McPeek 4-8-10	Survey Calculation Method:	Minimum Curvature
Wellbore:	Wellbore #1		
Design:	Plan #1 (1-10-13)		

Planned Survey										
Measured Depth (ft)	Inclination (°)	Azimuth (°)	Vertical Depth (ft)	+N/-S (ft)	+E/-W (ft)	Vertical Section (ft)	Dogleg Rate (°/100ft)	Build Rate (°/100ft)	Turn Rate (°/100ft)	
7,555.1	0.00	0.00	7,520.0	-400.7	78.3	408.3	0.00	0.00	0.00	
GREENHORN										
7,560.0	0.00	0.00	7,524.9	-400.7	78.3	408.3	0.00	0.00	0.00	
7,600.0	0.00	0.00	7,564.9	-400.7	78.3	408.3	0.00	0.00	0.00	
7,640.0	0.00	0.00	7,604.9	-400.7	78.3	408.3	0.00	0.00	0.00	
7,680.0	0.00	0.00	7,644.9	-400.7	78.3	408.3	0.00	0.00	0.00	
7,720.0	0.00	0.00	7,684.9	-400.7	78.3	408.3	0.00	0.00	0.00	
7,760.0	0.00	0.00	7,724.9	-400.7	78.3	408.3	0.00	0.00	0.00	
7,764.1	0.00	0.00	7,729.0	-400.7	78.3	408.3	0.00	0.00	0.00	
GRANEROS										
7,800.0	0.00	0.00	7,764.9	-400.7	78.3	408.3	0.00	0.00	0.00	
7,840.0	0.00	0.00	7,804.9	-400.7	78.3	408.3	0.00	0.00	0.00	
7,880.0	0.00	0.00	7,844.9	-400.7	78.3	408.3	0.00	0.00	0.00	
7,920.0	0.00	0.00	7,884.9	-400.7	78.3	408.3	0.00	0.00	0.00	
7,922.1	0.00	0.00	7,887.0	-400.7	78.3	408.3	0.00	0.00	0.00	
MOWRY										
7,938.1	0.00	0.00	7,903.0	-400.7	78.3	408.3	0.00	0.00	0.00	
J-SAND										
7,960.0	0.00	0.00	7,924.9	-400.7	78.3	408.3	0.00	0.00	0.00	
8,000.0	0.00	0.00	7,964.9	-400.7	78.3	408.3	0.00	0.00	0.00	
8,015.1	0.00	0.00	7,980.0	-400.7	78.3	408.3	0.00	0.00	0.00	
SKULL CREEK A MARKER										
8,040.0	0.00	0.00	8,004.9	-400.7	78.3	408.3	0.00	0.00	0.00	
8,080.0	0.00	0.00	8,044.9	-400.7	78.3	408.3	0.00	0.00	0.00	
8,088.1	0.00	0.00	8,053.0	-400.7	78.3	408.3	0.00	0.00	0.00	

Casing Points				
Measured Depth (ft)	Vertical Depth (ft)	Name	Casing Diameter (")	Hole Diameter (")
800.0	800.0	8 5/8"	8-5/8	12-1/4

Database:	Landmark	Local Co-ordinate Reference:	Well McPeek 4-8-10
Company:	EnCana Oil & Gas Weld County CO	TVD Reference:	WELL @ 5001.0ft (Original Well Elev)
Project:	SEC.10-T2N-R66W	MD Reference:	WELL @ 5001.0ft (Original Well Elev)
Site:	McPeek 2-8-10 Pad Sec.10-T2N-R66W	North Reference:	True
Well:	McPeek 4-8-10	Survey Calculation Method:	Minimum Curvature
Wellbore:	Wellbore #1		
Design:	Plan #1 (1-10-13)		

Formations						
Measured Depth (ft)	Vertical Depth (ft)	Name	Lithology	Dip (°)	Dip Direction (°)	
4,584.1	4,549.0	SUSSEX		0.00		
4,698.1	4,663.0	SUSSEX PAY TOP		0.00		
4,821.1	4,786.0	SUSSEX MARKER		0.00		
5,152.1	5,117.0	SHANNON		0.00		
6,286.1	6,251.0	TEEPEE BUTTES		0.00		
7,153.1	7,118.0	SHARON SPRINGS		0.00		
7,226.1	7,191.0	NIOBRARA		0.00		
7,469.1	7,434.0	FT. HAYES		0.00		
7,491.1	7,456.0	CODELL		0.00		
7,514.1	7,479.0	FAIRPORT		0.00		
7,555.1	7,520.0	GREENHORN		0.00		
7,764.1	7,729.0	GRANEROS		0.00		
7,922.1	7,887.0	MOWRY		0.00		
7,938.1	7,903.0	J-SAND		0.00		
8,015.1	7,980.0	SKULL CREEK A MARKER		0.00		



Directional

EnCana Oil & Gas Weld County CO

SEC.10-T2N-R66W

McPeck 2-8-10 Pad Sec.10-T2N-R66W

McPeck 4-8-10

Wellbore #1

Plan #1 (1-10-13)

Anticollision Report

14 January, 2013

Offset Design													Offset Site Error:	
Survey Program: 8100-UNKNOWN													Offset Well Error:	
Reference		Offset		Semi Major Axis			Distance							
Measured Depth	Vertical Depth	Measured Depth	Vertical Depth	Reference	Offset	Highside Toolface	Offset Wellbore Centre		Between Centres	Between Ellipses	Minimum Separation	Separation Factor	Warning	
(ft)	(ft)	(ft)	(ft)	(ft)	(ft)	(°)	+N/-S (ft)	+E/-W (ft)	(ft)	(ft)	(ft)			
1,600.0	1,600.0	1,601.0	1,601.0	3.5	32.0	-81.10	21.9	629.0	629.1	593.7	35.47	17.735		
1,700.0	1,699.8	1,700.8	1,700.8	3.6	34.0	-81.59	21.9	629.0	628.3	590.7	37.64	16.693		
1,800.0	1,799.5	1,800.5	1,800.5	3.8	36.0	-82.39	21.9	629.0	627.1	587.3	39.81	15.751		
1,900.0	1,898.7	1,899.7	1,899.7	4.0	38.0	-83.52	21.9	629.0	625.6	583.6	42.00	14.896		
2,000.0	1,997.5	1,998.5	1,998.5	4.2	40.0	-84.96	21.9	629.0	624.0	579.8	44.20	14.118		
2,100.0	2,095.8	2,096.8	2,096.8	4.5	41.9	-86.63	21.9	629.0	622.7	576.2	46.43	13.411		
2,200.0	2,194.0	2,195.0	2,195.0	4.8	43.9	-88.30	21.9	629.0	621.8	573.1	48.68	12.774		
2,300.0	2,292.3	2,293.3	2,293.3	5.1	45.9	-89.98	21.9	629.0	621.5	570.6	50.95	12.200		
2,301.1	2,293.4	2,294.4	2,294.4	5.1	45.9	-90.00	21.9	629.0	621.5	570.6	50.97	12.194 CC		
2,400.0	2,390.6	2,391.6	2,391.6	5.4	47.8	-91.66	21.9	629.0	621.8	568.6	53.23	11.681		
2,500.0	2,488.8	2,489.8	2,489.8	5.7	49.8	-93.34	21.9	629.0	622.6	567.1	55.53	11.214		
2,600.0	2,587.1	2,588.1	2,588.1	6.1	51.8	-95.01	21.9	629.0	624.0	566.2	57.83	10.791		
2,700.0	2,685.4	2,686.4	2,686.4	6.4	53.7	-96.67	21.9	629.0	625.9	565.8	60.13	10.409		
2,800.0	2,783.6	2,784.6	2,784.6	6.8	55.7	-98.32	21.9	629.0	628.4	565.9	62.45	10.063		
2,900.0	2,881.9	2,882.9	2,882.9	7.2	57.7	-99.96	21.9	629.0	631.4	566.6	64.76	9.750		
3,000.0	2,980.2	2,981.2	2,981.2	7.5	59.6	-101.58	21.9	629.0	634.9	567.8	67.07	9.466		
3,100.0	3,078.4	3,079.4	3,079.4	7.9	61.6	-103.18	21.9	629.0	638.9	569.6	69.38	9.209		
3,200.0	3,176.7	3,177.7	3,177.7	8.3	63.6	-104.76	21.9	629.0	643.5	571.8	71.69	8.976		
3,300.0	3,275.0	3,276.0	3,276.0	8.7	65.5	-106.32	21.9	629.0	648.5	574.5	73.99	8.765		
3,400.0	3,373.2	3,374.2	3,374.2	9.1	67.5	-107.85	21.9	629.0	654.1	577.8	76.29	8.573		
3,500.0	3,471.5	3,472.5	3,472.5	9.5	69.5	-109.36	21.9	629.0	660.1	581.5	78.59	8.400		
3,600.0	3,569.8	3,570.8	3,570.8	9.9	71.4	-110.84	21.9	629.0	666.6	585.7	80.87	8.242		
3,700.0	3,668.0	3,669.0	3,669.0	10.3	73.4	-112.29	21.9	629.0	673.5	590.3	83.16	8.099		
3,800.0	3,766.6	3,767.6	3,767.6	10.6	75.4	-113.71	21.9	629.0	680.1	594.7	85.46	7.958		
3,900.0	3,865.7	3,866.7	3,866.7	10.9	77.3	-114.83	21.9	629.0	685.7	598.0	87.72	7.816		
4,000.0	3,965.2	3,966.2	3,966.2	11.1	79.3	-115.65	21.9	629.0	689.9	600.0	89.97	7.669		
4,100.0	4,065.0	4,066.0	4,066.0	11.3	81.3	-116.18	21.9	629.0	692.8	600.6	92.19	7.515		
4,200.0	4,164.9	4,165.9	4,165.9	11.5	83.3	-116.43	21.9	629.0	694.1	599.7	94.38	7.354		
4,300.0	4,264.9	4,265.9	4,265.9	11.7	85.3	52.50	21.9	629.0	694.2	597.6	96.54	7.190		
4,400.0	4,364.9	4,365.9	4,365.9	11.8	87.3	52.50	21.9	629.0	694.2	595.5	98.70	7.033		
4,500.0	4,464.9	4,465.9	4,465.9	12.0	89.3	52.50	21.9	629.0	694.2	593.3	100.87	6.882		
4,600.0	4,564.9	4,565.9	4,565.9	12.1	91.3	52.50	21.9	629.0	694.2	591.1	103.04	6.737		
4,700.0	4,664.9	4,665.9	4,665.9	12.3	93.3	52.50	21.9	629.0	694.2	589.0	105.20	6.598		
4,800.0	4,764.9	4,765.9	4,765.9	12.5	95.3	52.50	21.9	629.0	694.2	586.8	107.37	6.465		
4,900.0	4,864.9	4,865.9	4,865.9	12.6	97.3	52.50	21.9	629.0	694.2	584.6	109.55	6.337		
5,000.0	4,964.9	4,965.9	4,965.9	12.8	99.3	52.50	21.9	629.0	694.2	582.5	111.72	6.214		
5,100.0	5,064.9	5,065.9	5,065.9	13.0	101.3	52.50	21.9	629.0	694.2	580.3	113.89	6.095		
5,200.0	5,164.9	5,165.9	5,165.9	13.1	103.3	52.50	21.9	629.0	694.2	578.1	116.07	5.981		
5,300.0	5,264.9	5,265.9	5,265.9	13.3	105.3	52.50	21.9	629.0	694.2	575.9	118.25	5.870		
5,400.0	5,364.9	5,365.9	5,365.9	13.5	107.3	52.50	21.9	629.0	694.2	573.8	120.43	5.764		
5,500.0	5,464.9	5,465.9	5,465.9	13.6	109.3	52.50	21.9	629.0	694.2	571.6	122.61	5.662		
5,600.0	5,564.9	5,565.9	5,565.9	13.8	111.3	52.50	21.9	629.0	694.2	569.4	124.79	5.563		
5,700.0	5,664.9	5,665.9	5,665.9	14.0	113.3	52.50	21.9	629.0	694.2	567.2	126.98	5.467		
5,800.0	5,764.9	5,765.9	5,765.9	14.2	115.3	52.50	21.9	629.0	694.2	565.0	129.16	5.375		
5,900.0	5,864.9	5,865.9	5,865.9	14.4	117.3	52.50	21.9	629.0	694.2	562.8	131.35	5.285		
6,000.0	5,964.9	5,965.9	5,965.9	14.5	119.3	52.50	21.9	629.0	694.2	560.6	133.53	5.199		
6,100.0	6,064.9	6,065.9	6,065.9	14.7	121.3	52.50	21.9	629.0	694.2	558.5	135.72	5.115		
6,200.0	6,164.9	6,165.9	6,165.9	14.9	123.3	52.50	21.9	629.0	694.2	556.3	137.91	5.034		
6,300.0	6,264.9	6,265.9	6,265.9	15.1	125.3	52.50	21.9	629.0	694.2	554.1	140.10	4.955		
6,400.0	6,364.9	6,365.9	6,365.9	15.3	127.3	52.50	21.9	629.0	694.2	551.9	142.29	4.879		
6,500.0	6,464.9	6,465.9	6,465.9	15.5	129.3	52.50	21.9	629.0	694.2	549.7	144.49	4.805		
6,600.0	6,564.9	6,565.9	6,565.9	15.7	131.3	52.50	21.9	629.0	694.2	547.5	146.68	4.733		

Company:	EnCana Oil & Gas Weld County CO	Local Co-ordinate Reference:	Well McPeek 4-8-10
Project:	SEC.10-T2N-R66W	TVD Reference:	WELL @ 5001.0ft (Original Well Elev)
Reference Site:	McPeek 2-8-10 Pad Sec.10-T2N-R66W	MD Reference:	WELL @ 5001.0ft (Original Well Elev)
Site Error:	0.0ft	North Reference:	True
Reference Well:	McPeek 4-8-10	Survey Calculation Method:	Minimum Curvature
Well Error:	0.0ft	Output errors are at	2.00 sigma
Reference Wellbore	Wellbore #1	Database:	Landmark
Reference Design:	Plan #1 (1-10-13)	Offset TVD Reference:	Offset Datum

Offset Design McPeek 24-10 Pad Sec.10-T2N-R66W - lone 34-10 (Exist.) - Wellbore #1 - Wellbore #1												Offset Site Error:	0.0 ft
Survey Program: 8100-UNKNOWN												Offset Well Error:	0.0 ft
Reference		Offset		Semi Major Axis			Distance						
Measured Depth (ft)	Vertical Depth (ft)	Measured Depth (ft)	Vertical Depth (ft)	Reference (ft)	Offset (ft)	Highside Toolface (°)	Offset Wellbore Centre +N/-S (ft)	+E/-W (ft)	Between Centres (ft)	Between Ellipses (ft)	Minimum Separation (ft)	Separation Factor	Warning
6,700.0	6,664.9	6,665.9	6,665.9	15.8	133.3	52.50	21.9	629.0	694.2	545.3	148.87	4.663	
6,800.0	6,764.9	6,765.9	6,765.9	16.0	135.3	52.50	21.9	629.0	694.2	543.1	151.07	4.595	
6,900.0	6,864.9	6,865.9	6,865.9	16.2	137.3	52.50	21.9	629.0	694.2	540.9	153.26	4.529	
7,000.0	6,964.9	6,965.9	6,965.9	16.4	139.3	52.50	21.9	629.0	694.2	538.7	155.46	4.465	
7,100.0	7,064.9	7,065.9	7,065.9	16.6	141.3	52.50	21.9	629.0	694.2	536.5	157.66	4.403	
7,200.0	7,164.9	7,165.9	7,165.9	16.8	143.3	52.50	21.9	629.0	694.2	534.3	159.85	4.343	
7,300.0	7,264.9	7,265.9	7,265.9	17.0	145.3	52.50	21.9	629.0	694.2	532.1	162.05	4.284	
7,400.0	7,364.9	7,365.9	7,365.9	17.2	147.3	52.50	21.9	629.0	694.2	529.9	164.25	4.226	
7,500.0	7,464.9	7,465.9	7,465.9	17.4	149.3	52.50	21.9	629.0	694.2	527.7	166.45	4.171	
7,600.0	7,564.9	7,565.9	7,565.9	17.6	151.3	52.50	21.9	629.0	694.2	525.5	168.65	4.116	
7,700.0	7,664.9	7,665.9	7,665.9	17.8	153.3	52.50	21.9	629.0	694.2	523.3	170.85	4.063	
7,800.0	7,764.9	7,765.9	7,765.9	18.0	155.3	52.50	21.9	629.0	694.2	521.1	173.05	4.011	
7,900.0	7,864.9	7,865.9	7,865.9	18.2	157.3	52.50	21.9	629.0	694.2	518.9	175.25	3.961	
8,000.0	7,964.9	7,965.9	7,965.9	18.4	159.3	52.50	21.9	629.0	694.2	516.7	177.46	3.912	
8,088.1	8,053.0	8,054.0	8,054.0	18.6	161.1	52.50	21.9	629.0	694.2	514.8	179.40	3.870 ES, SF	

McPeek 24-10 Pad Sec.10-T2N-R66W - McPeek 14-10 (Exist.) - Wellbore #1 - Wellbore #1													Offset Site Error:	0.0 ft
Survey Program: 94-MWD													Offset Well Error:	0.0 ft
Reference		Offset		Semi Major Axis			Distance							
Measured Depth (ft)	Vertical Depth (ft)	Measured Depth (ft)	Vertical Depth (ft)	Reference (ft)	Offset (ft)	Highside Toolface (°)	Offset Wellbore Centre +N/-S (ft)	+E/-W (ft)	Between Centres (ft)	Between Ellipses (ft)	Minimum Separation (ft)	Separation Factor	Warning	
0.0	0.0	1.0	1.0	0.0	0.0	-137.38	-18.2	-16.8	24.8	24.8	0.00	N/A	CC	
100.0	100.0	100.9	100.9	0.1	0.1	-138.57	-18.7	-16.5	25.0	24.8	0.23	107.039	ES	
200.0	200.0	200.8	200.8	0.3	0.3	-140.57	-19.7	-16.2	25.5	24.8	0.67	37.930		
300.0	300.0	300.4	300.3	0.6	0.6	-138.90	-20.4	-17.8	27.1	26.0	1.11	24.406		
400.0	400.0	399.7	399.5	0.8	0.8	-130.31	-19.8	-23.4	30.7	29.1	1.56	19.658		
500.0	500.0	498.4	497.8	1.0	1.0	-119.27	-18.1	-32.3	37.2	35.2	2.02	18.404	SF	
600.0	600.0	595.7	594.1	1.2	1.3	-107.93	-14.8	-45.6	48.4	46.0	2.49	19.419		
700.0	700.0	691.5	688.1	1.5	1.7	-98.95	-10.0	-63.5	65.6	62.6	2.98	22.037		
800.0	800.0	785.5	779.5	1.7	2.1	-93.14	-4.6	-84.9	87.7	84.2	3.46	25.374		
900.0	900.0	878.9	869.4	1.9	2.6	-89.61	0.7	-109.7	114.2	110.2	3.94	29.011		
1,000.0	1,000.0	973.6	960.0	2.1	3.1	-87.15	6.8	-136.4	142.6	138.2	4.41	32.315		
1,100.0	1,100.0	1,068.7	1,050.9	2.4	3.6	-85.87	11.8	-163.6	171.5	166.6	4.89	35.110		
1,200.0	1,200.0	1,161.1	1,139.1	2.6	4.2	-85.10	16.4	-191.0	201.4	196.0	5.37	37.494		
1,300.0	1,300.0	1,251.8	1,225.1	2.8	4.8	-84.56	20.9	-219.3	233.0	227.2	5.87	39.724		
1,400.0	1,400.0	1,340.4	1,308.5	3.0	5.4	-84.01	26.1	-248.7	266.6	260.3	6.37	41.881		
1,500.0	1,500.0	1,424.8	1,387.3	3.3	6.0	-83.52	31.6	-278.7	302.7	295.8	6.87	44.077		
1,600.0	1,600.0	1,504.2	1,460.2	3.5	6.7	107.42	37.6	-309.3	342.4	335.1	7.27	47.123		
1,700.0	1,699.8	1,583.7	1,532.1	3.6	7.4	107.61	44.3	-342.7	386.6	378.9	7.69	50.256		
1,800.0	1,799.5	1,669.4	1,609.1	3.8	8.2	108.07	51.6	-379.7	433.1	424.9	8.14	53.194		
1,900.0	1,898.7	1,754.6	1,685.3	4.0	9.0	108.63	58.8	-416.9	481.3	472.7	8.59	56.029		
2,000.0	1,997.5	1,847.2	1,768.6	4.2	9.8	109.36	66.1	-456.9	530.2	521.1	9.07	58.479		
2,100.0	2,095.8	1,931.3	1,844.3	4.5	10.5	110.61	72.5	-492.9	579.9	570.4	9.55	60.750		
2,200.0	2,194.0	2,019.9	1,924.1	4.8	11.3	112.08	79.2	-530.8	629.9	619.8	10.07	62.543		
2,300.0	2,292.3	2,099.2	1,995.5	5.1	11.9	113.17	84.9	-565.0	680.3	669.7	10.60	64.190		
2,400.0	2,390.6	2,192.3	2,079.1	5.4	12.8	114.27	91.6	-605.2	731.1	719.9	11.19	65.341		
2,500.0	2,488.8	2,286.9	2,164.8	5.7	13.5	115.31	99.0	-644.7	780.8	769.0	11.79	66.239		
2,600.0	2,587.1	2,370.3	2,240.4	6.1	14.3	116.17	105.9	-679.0	830.3	818.0	12.38	67.088		
2,700.0	2,685.4	2,468.5	2,329.7	6.4	15.1	117.05	114.0	-719.4	879.9	866.9	13.03	67.539		
2,800.0	2,783.6	2,549.2	2,403.2	6.8	15.8	117.69	120.3	-751.9	928.7	915.1	13.63	68.134		
2,900.0	2,881.9	2,636.7	2,482.6	7.2	16.5	118.33	127.4	-787.8	978.4	964.2	14.27	68.574		
3,000.0	2,980.2	2,731.4	2,569.0	7.5	17.3	118.93	134.7	-826.1	1,027.5	1,012.5	14.93	68.814		
3,100.0	3,078.4	2,816.0	2,646.3	7.9	18.0	119.45	141.6	-859.8	1,076.2	1,060.7	15.57	69.137		
3,200.0	3,176.7	2,895.6	2,718.8	8.3	18.7	119.90	148.2	-891.9	1,125.6	1,109.4	16.20	69.484		
3,300.0	3,275.0	2,977.7	2,793.4	8.7	19.4	120.31	154.9	-925.6	1,175.5	1,158.6	16.85	69.764		
3,400.0	3,373.2	3,050.0	2,859.0	9.1	20.0	120.64	160.8	-955.3	1,225.6	1,208.1	17.46	70.184		
3,500.0	3,471.5	3,118.9	2,921.3	9.5	20.6	120.93	166.7	-984.3	1,276.8	1,258.7	18.07	70.651		
3,600.0	3,569.8	3,191.0	2,985.7	9.9	21.3	121.21	173.2	-1,015.9	1,329.6	1,310.9	18.70	71.103		
3,700.0	3,668.0	3,295.1	3,078.8	10.3	22.3	121.57	182.4	-1,061.5	1,382.5	1,363.0	19.44	71.104		
3,800.0	3,766.6	3,411.0	3,183.6	10.6	23.3	122.84	192.1	-1,110.0	1,432.5	1,412.2	20.34	70.422		
3,900.0	3,865.7	3,538.6	3,300.3	10.9	24.3	123.83	201.8	-1,160.8	1,478.9	1,457.7	21.22	69.689		
4,000.0	3,965.2	3,632.6	3,386.9	11.1	25.0	124.61	209.0	-1,196.8	1,522.2	1,500.2	21.95	69.334		
4,100.0	4,065.0	3,711.9	3,459.8	11.3	25.6	125.28	216.0	-1,227.1	1,564.1	1,541.5	22.61	69.190		
4,200.0	4,164.9	3,828.2	3,567.1	11.5	26.6	125.72	225.5	-1,270.8	1,603.3	1,579.9	23.33	68.721		
4,300.0	4,264.9	3,900.5	3,633.7	11.7	27.1	-65.34	231.3	-1,298.2	1,641.3	1,617.5	23.78	69.012		
4,400.0	4,364.9	3,979.0	3,705.7	11.8	27.8	-65.63	236.9	-1,329.1	1,680.2	1,656.0	24.20	69.424		
4,500.0	4,464.9	4,067.2	3,786.4	12.0	28.5	-65.98	242.4	-1,364.6	1,719.7	1,695.0	24.65	69.754		
4,600.0	4,564.9	4,187.6	3,896.8	12.1	29.5	-66.35	251.5	-1,411.4	1,758.4	1,733.2	25.19	69.797		
4,700.0	4,664.9	4,268.0	3,970.9	12.3	30.1	-66.58	257.9	-1,442.0	1,796.6	1,771.0	25.61	70.156		
4,800.0	4,764.9	4,336.0	4,033.4	12.5	30.7	-66.76	263.5	-1,468.4	1,835.8	1,809.8	26.00	70.616		
4,900.0	4,864.9	4,403.0	4,094.5	12.6	31.3	-66.92	269.8	-1,495.2	1,876.4	1,850.0	26.39	71.105		
5,000.0	4,964.9	4,478.0	4,162.4	12.8	31.9	-67.10	276.9	-1,526.0	1,918.0	1,891.2	26.81	71.545		
5,100.0	5,064.9	4,614.9	4,286.7	13.0	33.1	-67.43	289.4	-1,582.0	1,959.6	1,932.2	27.42	71.466		

Company:	EnCana Oil & Gas Weld County CO	Local Co-ordinate Reference:	Well McPeek 4-8-10
Project:	SEC.10-T2N-R66W	TVD Reference:	WELL @ 5001.0ft (Original Well Elev)
Reference Site:	McPeek 2-8-10 Pad Sec.10-T2N-R66W	MD Reference:	WELL @ 5001.0ft (Original Well Elev)
Site Error:	0.0ft	North Reference:	True
Reference Well:	McPeek 4-8-10	Survey Calculation Method:	Minimum Curvature
Well Error:	0.0ft	Output errors are at	2.00 sigma
Reference Wellbore	Wellbore #1	Database:	Landmark
Reference Design:	Plan #1 (1-10-13)	Offset TVD Reference:	Offset Datum

Offset Design McPeek 24-10 Pad Sec.10-T2N-R66W - McPeek 14-10 (Exist.) - Wellbore #1 - Wellbore #1												Offset Site Error:	0.0 ft
Survey Program: 94-MWD												Offset Well Error:	0.0 ft
Reference		Offset		Semi Major Axis			Distance						
Measured Depth (ft)	Vertical Depth (ft)	Measured Depth (ft)	Vertical Depth (ft)	Reference (ft)	Offset (ft)	Highside Toolface (°)	Offset Wellbore Centre +N/-S (ft)	+E/-W (ft)	Between Centres (ft)	Between Ellipses (ft)	Minimum Separation (ft)	Separation Factor	Warning
5,200.0	5,164.9	4,774.1	4,433.6	13.1	34.3	-67.85	299.8	-1,642.3	1,996.9	1,968.8	28.08	71.118	
5,300.0	5,264.9	4,851.6	4,505.4	13.3	34.9	-68.03	304.9	-1,671.1	2,033.9	2,005.4	28.50	71.374	
5,400.0	5,364.9	4,923.8	4,572.0	13.5	35.5	-68.21	309.7	-1,698.6	2,071.7	2,042.8	28.90	71.677	
5,500.0	5,464.9	5,087.2	4,723.5	13.6	36.7	-68.59	319.9	-1,759.0	2,108.6	2,079.0	29.58	71.281	
5,600.0	5,564.9	5,236.7	4,863.6	13.8	37.8	-68.91	327.7	-1,810.6	2,142.9	2,112.7	30.20	70.966	
5,700.0	5,664.9	5,533.6	5,147.7	14.0	39.4	-69.38	341.9	-1,895.2	2,171.3	2,140.2	31.16	69.680	
5,800.0	5,764.9	6,154.3	5,762.2	14.2	41.0	-69.74	354.9	-1,968.8	2,182.0	2,149.6	32.49	67.163	
5,900.0	5,864.9	6,255.0	5,863.0	14.4	41.1	-69.74	354.9	-1,968.9	2,182.2	2,149.4	32.80	66.523	
6,000.0	5,964.9	6,362.2	5,970.2	14.5	41.2	-69.75	354.7	-1,969.0	2,182.2	2,149.1	33.13	65.872	
6,100.0	6,064.9	6,483.2	6,091.1	14.7	41.2	-69.76	354.1	-1,968.5	2,181.6	2,148.1	33.47	65.181	
6,200.0	6,164.9	6,584.3	6,192.3	14.9	41.3	-69.77	353.0	-1,967.4	2,180.3	2,146.5	33.79	64.531	
6,300.0	6,264.9	6,681.1	6,289.0	15.1	41.3	-69.80	351.8	-1,966.7	2,179.2	2,145.1	34.10	63.904	
6,400.0	6,364.9	6,776.2	6,384.1	15.3	41.4	-69.83	350.4	-1,966.2	2,178.2	2,143.8	34.42	63.291	
6,500.0	6,464.9	6,873.3	6,481.2	15.5	41.5	-69.86	349.2	-1,965.9	2,177.5	2,142.7	34.74	62.687	
6,600.0	6,564.9	6,966.1	6,574.0	15.7	41.5	-69.88	348.1	-1,965.8	2,176.9	2,141.8	35.05	62.104	
6,658.8	6,623.8	7,016.8	6,624.8	15.8	41.6	-69.89	347.6	-1,965.8	2,176.8	2,141.5	35.24	61.776	
6,700.0	6,664.9	7,050.8	6,658.8	15.8	41.6	-69.90	347.3	-1,966.0	2,176.8	2,141.5	35.36	61.555	
6,800.0	6,764.9	7,137.3	6,745.2	16.0	41.6	-69.93	346.6	-1,966.9	2,177.5	2,141.8	35.68	61.024	
6,900.0	6,864.9	7,230.9	6,838.8	16.2	41.7	-69.96	345.8	-1,968.3	2,178.7	2,142.6	36.02	60.490	
7,000.0	6,964.9	7,326.0	6,933.9	16.4	41.8	-70.00	344.6	-1,970.1	2,180.0	2,143.6	36.36	59.964	
7,100.0	7,064.9	7,428.2	7,036.1	16.6	41.9	-70.05	343.5	-1,972.1	2,181.5	2,144.8	36.71	59.431	
7,200.0	7,164.9	7,533.6	7,141.5	16.8	42.0	-70.11	341.8	-1,974.1	2,182.7	2,145.7	37.06	58.892	
7,300.0	7,264.9	7,651.0	7,258.8	17.0	42.1	-70.16	340.4	-1,975.6	2,183.5	2,146.1	37.44	58.327	
7,400.0	7,364.9	7,748.4	7,356.2	17.2	42.2	-70.14	341.2	-1,975.7	2,183.9	2,146.1	37.78	57.812	
7,500.0	7,464.9	7,851.1	7,458.9	17.4	42.3	-70.08	343.5	-1,975.3	2,184.3	2,146.2	38.13	57.292	
7,600.0	7,564.9	7,954.5	7,562.2	17.6	42.4	-70.02	345.8	-1,974.7	2,184.5	2,146.0	38.48	56.772	
7,700.0	7,664.9	8,055.8	7,663.5	17.8	42.4	-69.96	347.9	-1,974.1	2,184.7	2,145.8	38.83	56.261	
7,800.0	7,764.9	8,070.0	7,677.7	18.0	42.5	-69.95	348.2	-1,974.0	2,186.4	2,147.4	39.05	55.986	
7,900.0	7,864.9	8,070.0	7,677.7	18.2	42.5	-69.95	348.2	-1,974.0	2,192.8	2,153.5	39.26	55.858	
8,000.0	7,964.9	8,070.0	7,677.7	18.4	42.5	-69.95	348.2	-1,974.0	2,203.6	2,164.1	39.46	55.846	
8,088.1	8,053.0	8,070.0	7,677.7	18.6	42.5	-69.95	348.2	-1,974.0	2,216.8	2,177.2	39.64	55.927	

Company:	EnCana Oil & Gas Weld County CO	Local Co-ordinate Reference:	Well McPeek 4-8-10
Project:	SEC.10-T2N-R66W	TVD Reference:	WELL @ 5001.0ft (Original Well Elev)
Reference Site:	McPeek 2-8-10 Pad Sec.10-T2N-R66W	MD Reference:	WELL @ 5001.0ft (Original Well Elev)
Site Error:	0.0ft	North Reference:	True
Reference Well:	McPeek 4-8-10	Survey Calculation Method:	Minimum Curvature
Well Error:	0.0ft	Output errors are at	2.00 sigma
Reference Wellbore	Wellbore #1	Database:	Landmark
Reference Design:	Plan #1 (1-10-13)	Offset TVD Reference:	Offset Datum

Offset Design													Offset Site Error:	0.0 ft
Survey Program: 183-MWD													Offset Well Error:	0.0 ft
Reference		Offset		Semi Major Axis			Distance							Warning
Measured Depth (ft)	Vertical Depth (ft)	Measured Depth (ft)	Vertical Depth (ft)	Reference (ft)	Offset (ft)	Highside Toolface (°)	Offset Wellbore Centre +N/-S (ft)	+E/-W (ft)	Between Centres (ft)	Between Ellipses (ft)	Minimum Separation (ft)	Separation Factor		
0.0	0.0	1.0	1.0	0.0	0.0	-131.10	-7.3	-8.4	11.1	11.1	0.00	8,385.586		
100.0	100.0	101.0	101.0	0.1	0.1	-132.22	-7.4	-8.2	11.0	10.8	0.23	48.667		
200.0	200.0	201.0	201.0	0.3	0.2	-135.65	-7.7	-7.5	10.7	10.1	0.58	18.429		
300.0	300.0	301.0	301.0	0.6	0.5	-140.06	-8.0	-6.7	10.5	9.4	1.02	10.283		
375.7	375.7	376.8	376.7	0.7	0.6	-142.57	-8.2	-6.3	10.3	9.0	1.34	7.721 CC		
400.0	400.0	401.0	401.0	0.8	0.7	-143.06	-8.3	-6.2	10.4	8.9	1.44	7.190 ES		
500.0	500.0	500.9	500.9	1.0	0.9	-142.75	-8.9	-6.8	11.2	9.4	1.88	5.987		
600.0	600.0	600.9	600.9	1.2	1.1	-138.80	-9.4	-8.2	12.5	10.2	2.31	5.390		
700.0	700.0	700.9	700.8	1.5	1.3	-133.99	-9.5	-9.8	13.6	10.9	2.75	4.961		
800.0	800.0	800.8	800.8	1.7	1.5	-129.28	-9.5	-11.6	15.0	11.8	3.19	4.709		
900.0	900.0	900.8	900.7	1.9	1.7	-124.30	-9.3	-13.7	16.6	12.9	3.62	4.572		
1,000.0	1,000.0	1,000.7	1,000.6	2.1	1.9	-120.81	-9.4	-15.8	18.4	14.4	4.06	4.540 SF		
1,100.0	1,100.0	1,100.6	1,100.5	2.4	2.1	-117.15	-9.5	-18.5	20.8	16.3	4.50	4.610		
1,200.0	1,200.0	1,200.5	1,200.3	2.6	2.4	-112.80	-9.1	-21.8	23.6	18.7	4.94	4.779		
1,300.0	1,300.0	1,300.5	1,300.2	2.8	2.6	-108.99	-8.6	-25.1	26.5	21.2	5.37	4.938		
1,400.0	1,400.0	1,400.4	1,400.1	3.0	2.8	-106.21	-8.2	-28.4	29.6	23.8	5.81	5.092		
1,500.0	1,500.0	1,500.0	1,499.6	3.3	3.0	-103.60	-7.7	-31.9	32.8	26.6	6.24	5.261		
1,600.0	1,600.0	1,599.1	1,598.6	3.5	3.2	93.66	-6.5	-37.6	38.3	31.6	6.65	5.759		
1,700.0	1,699.8	1,698.1	1,697.2	3.6	3.5	105.29	-3.2	-44.5	46.2	39.1	7.04	6.558		
1,800.0	1,799.5	1,795.7	1,794.4	3.8	3.7	117.41	1.6	-52.5	58.4	50.9	7.43	7.852		
1,900.0	1,898.7	1,892.0	1,890.1	4.0	3.9	126.81	6.9	-62.5	76.6	68.8	7.84	9.775		
2,000.0	1,997.5	1,986.7	1,983.8	4.2	4.2	132.34	11.0	-74.9	100.1	91.9	8.25	12.137		
2,100.0	2,095.8	2,081.1	2,077.0	4.5	4.5	135.58	14.1	-90.3	128.1	119.4	8.69	14.749		
2,200.0	2,194.0	2,175.8	2,170.2	4.8	4.8	137.83	17.5	-106.1	157.2	148.0	9.15	17.178		
2,300.0	2,292.3	2,271.2	2,264.1	5.1	5.1	139.25	21.0	-122.8	186.8	177.2	9.63	19.405		
2,400.0	2,390.6	2,365.7	2,357.0	5.4	5.4	139.94	23.5	-140.0	216.5	206.4	10.11	21.403		
2,500.0	2,488.8	2,458.9	2,448.5	5.7	5.7	140.56	26.7	-157.2	246.9	236.3	10.61	23.264		
2,600.0	2,587.1	2,555.1	2,542.9	6.1	6.1	140.99	30.1	-175.6	277.8	266.7	11.13	24.971		
2,700.0	2,685.4	2,652.1	2,638.3	6.4	6.4	141.52	33.7	-192.9	308.0	296.4	11.63	26.484		
2,800.0	2,783.6	2,746.7	2,731.4	6.8	6.7	142.01	37.4	-209.4	338.1	325.9	12.14	27.838		
2,900.0	2,881.9	2,838.9	2,821.9	7.2	7.1	142.39	41.3	-226.0	368.6	356.0	12.67	29.089		
3,000.0	2,980.2	2,930.1	2,911.5	7.5	7.4	142.69	45.6	-243.1	400.1	386.9	13.21	30.290		
3,100.0	3,078.4	3,026.3	3,005.7	7.9	7.8	142.92	50.2	-261.6	432.1	418.3	13.76	31.411		
3,200.0	3,176.7	3,121.7	3,099.3	8.3	8.1	143.09	54.3	-279.8	463.6	449.3	14.30	32.419		
3,300.0	3,275.0	3,216.6	3,192.3	8.7	8.5	143.20	58.2	-298.2	495.1	480.3	14.85	33.344		
3,400.0	3,373.2	3,315.1	3,288.9	9.1	8.9	143.38	62.6	-316.5	526.4	511.0	15.40	34.185		
3,500.0	3,471.5	3,404.6	3,376.8	9.5	9.2	143.49	66.4	-333.4	557.6	541.7	15.94	34.984		
3,600.0	3,569.8	3,504.1	3,474.2	9.9	9.6	143.54	70.4	-352.9	589.4	572.8	16.51	35.687		
3,700.0	3,668.0	3,604.4	3,572.8	10.3	10.0	143.69	74.4	-371.1	620.0	602.9	17.08	36.305		
3,800.0	3,766.6	3,696.9	3,663.7	10.6	10.3	144.08	78.1	-387.7	649.2	631.5	17.66	36.768		
3,900.0	3,865.7	3,781.7	3,747.0	10.9	10.6	144.32	82.4	-403.2	676.6	658.5	18.18	37.224		
4,000.0	3,965.2	3,876.5	3,839.9	11.1	11.0	144.41	88.4	-421.1	702.6	683.9	18.70	37.568		
4,100.0	4,065.0	4,011.8	3,973.0	11.3	11.5	144.06	93.6	-444.7	723.0	703.7	19.29	37.475		
4,200.0	4,164.9	4,113.5	4,073.6	11.5	11.8	143.77	96.8	-459.3	738.1	718.3	19.75	37.365		
4,300.0	4,264.9	4,221.5	4,180.6	11.7	12.2	-47.69	101.1	-473.1	750.5	730.3	20.19	37.165		
4,400.0	4,364.9	4,367.0	4,325.4	11.8	12.6	-48.26	104.2	-487.5	759.4	738.7	20.70	36.692		
4,500.0	4,464.9	4,481.0	4,439.1	12.0	12.8	-48.61	104.1	-494.6	764.0	742.9	21.11	36.189		
4,600.0	4,564.9	4,598.5	4,556.6	12.1	13.0	-48.71	104.6	-497.2	765.9	744.4	21.52	35.596		
4,700.0	4,664.9	4,697.6	4,655.6	12.3	13.2	-48.75	105.0	-498.4	767.1	745.2	21.88	35.054		
4,800.0	4,764.9	4,797.1	4,755.2	12.5	13.4	-48.82	105.3	-500.1	768.5	746.3	22.26	34.530		
4,900.0	4,864.9	4,899.7	4,857.7	12.6	13.5	-48.91	105.2	-501.9	769.8	747.2	22.64	34.001		
5,000.0	4,964.9	5,001.3	4,959.4	12.8	13.7	-49.03	104.6	-503.7	770.7	747.7	23.02	33.476		

CC - Min centre to center distance or convergent point, SF - min separation factor, ES - min ellipse separation

McPeek 24-10 Pad Sec.10-T2N-R66W - McPeek 24-10 (Exist.) - Wellbore #1 - Wellbore #1													Offset Site Error:	0.0 ft
Survey Program: 183-MWD													Offset Well Error:	0.0 ft
Reference		Offset		Semi Major Axis			Distance							
Measured Depth	Vertical Depth	Measured Depth	Vertical Depth	Reference	Offset	Highside Toolface	Offset Wellbore Centre		Between Centres	Between Ellipses	Minimum Separation	Separation Factor	Warning	
(ft)	(ft)	(ft)	(ft)	(ft)	(ft)	(°)	+N/-S (ft)	+E/-W (ft)	(ft)	(ft)	(ft)			
5,100.0	5,064.9	5,095.9	5,053.9	13.0	13.9	-49.15	104.1	-505.5	771.9	748.5	23.40	32.991		
5,200.0	5,164.9	5,192.9	5,150.9	13.1	14.1	-49.26	104.1	-507.8	773.7	749.9	23.78	32.536		
5,300.0	5,264.9	5,292.2	5,250.1	13.3	14.2	-49.37	104.3	-510.3	775.7	751.5	24.17	32.097		
5,400.0	5,364.9	5,393.0	5,350.9	13.5	14.4	-49.46	104.7	-512.6	777.7	753.1	24.56	31.669		
5,500.0	5,464.9	5,507.2	5,465.1	13.6	14.6	-49.48	105.1	-513.5	778.5	753.5	24.96	31.185		
5,600.0	5,564.9	5,606.7	5,564.6	13.8	14.8	-49.47	105.3	-513.5	778.6	753.3	25.34	30.723		
5,700.0	5,664.9	5,705.6	5,663.5	14.0	14.9	-49.48	105.3	-513.8	778.9	753.1	25.73	30.274		
5,800.0	5,764.9	5,804.6	5,762.5	14.2	15.1	-49.52	105.2	-514.4	779.2	753.1	26.12	29.839		
5,900.0	5,864.9	5,905.2	5,863.1	14.4	15.3	-49.57	104.9	-515.2	779.7	753.2	26.51	29.413		
6,000.0	5,964.9	6,005.9	5,963.8	14.5	15.5	-49.64	104.4	-516.0	780.0	753.1	26.90	28.993		
6,100.0	6,064.9	6,103.1	6,061.0	14.7	15.6	-49.71	103.9	-516.9	780.3	753.1	27.29	28.595		
6,200.0	6,164.9	6,200.7	6,158.6	14.9	15.8	-49.70	104.5	-517.5	781.2	753.5	27.68	28.226		
6,300.0	6,264.9	6,299.3	6,257.1	15.1	16.0	-49.64	105.8	-517.7	782.2	754.1	28.06	27.875		
6,400.0	6,364.9	6,400.9	6,358.8	15.3	16.1	-49.53	107.7	-517.5	783.3	754.8	28.45	27.531		
6,500.0	6,464.9	6,504.5	6,462.4	15.5	16.3	-49.39	109.6	-516.9	784.0	755.1	28.84	27.181		
6,600.0	6,564.9	6,608.0	6,565.8	15.7	16.5	-49.25	111.2	-515.8	784.2	755.0	29.23	26.825		
6,700.0	6,664.9	6,709.7	6,667.5	15.8	16.7	-49.10	112.7	-514.4	784.1	754.5	29.62	26.470		
6,800.0	6,764.9	6,809.4	6,767.2	16.0	16.8	-48.96	114.0	-513.0	783.9	753.9	30.01	26.120		
6,832.1	6,797.0	6,840.2	6,798.0	16.1	16.9	-48.92	114.4	-512.6	783.9	753.8	30.13	26.013		
6,900.0	6,864.9	6,905.5	6,863.3	16.2	17.0	-48.83	115.4	-511.9	784.0	753.6	30.40	25.793		
7,000.0	6,964.9	7,002.6	6,960.3	16.4	17.1	-48.69	117.2	-511.0	784.5	753.8	30.78	25.486		
7,100.0	7,064.9	7,100.6	7,058.3	16.6	17.3	-48.51	119.6	-510.0	785.4	754.2	31.17	25.195		
7,200.0	7,164.9	7,197.3	7,155.0	16.8	17.5	-48.27	122.8	-508.6	786.6	755.0	31.56	24.926		
7,300.0	7,264.9	7,295.9	7,253.4	17.0	17.7	-47.93	127.2	-506.7	788.0	756.1	31.94	24.670		
7,400.0	7,364.9	7,395.5	7,352.9	17.2	17.8	-47.64	131.4	-505.2	789.8	757.5	32.33	24.428		
7,500.0	7,464.9	7,502.3	7,459.7	17.4	18.0	-47.45	134.1	-504.3	790.9	758.2	32.74	24.156		
7,600.0	7,564.9	7,601.6	7,559.0	17.6	18.2	-47.29	136.2	-503.4	791.7	758.5	33.14	23.891		
7,700.0	7,664.9	7,703.4	7,660.8	17.8	18.4	-47.05	139.3	-501.8	792.6	759.0	33.54	23.633		
7,800.0	7,764.9	7,807.3	7,764.6	18.0	18.5	-46.82	141.9	-499.9	792.9	759.0	33.94	23.363		
7,900.0	7,864.9	7,906.4	7,863.6	18.2	18.7	-46.62	144.0	-498.2	793.1	758.8	34.34	23.097		
8,000.0	7,964.9	8,013.6	7,970.8	18.4	18.9	-46.40	146.2	-496.1	793.1	758.3	34.75	22.824		
8,060.5	8,025.4	8,070.0	8,027.1	18.5	19.0	-46.25	147.4	-494.3	792.7	757.7	34.98	22.660		
8,088.1	8,053.0	8,070.0	8,027.1	18.6	19.0	-46.25	147.4	-494.3	793.1	758.1	35.04	22.635		

Company:	EnCana Oil & Gas Weld County CO	Local Co-ordinate Reference:	Well McPeek 4-8-10
Project:	SEC.10-T2N-R66W	TVD Reference:	WELL @ 5001.0ft (Original Well Elev)
Reference Site:	McPeek 2-8-10 Pad Sec.10-T2N-R66W	MD Reference:	WELL @ 5001.0ft (Original Well Elev)
Site Error:	0.0ft	North Reference:	True
Reference Well:	McPeek 4-8-10	Survey Calculation Method:	Minimum Curvature
Well Error:	0.0ft	Output errors are at	2.00 sigma
Reference Wellbore	Wellbore #1	Database:	Landmark
Reference Design:	Plan #1 (1-10-13)	Offset TVD Reference:	Offset Datum

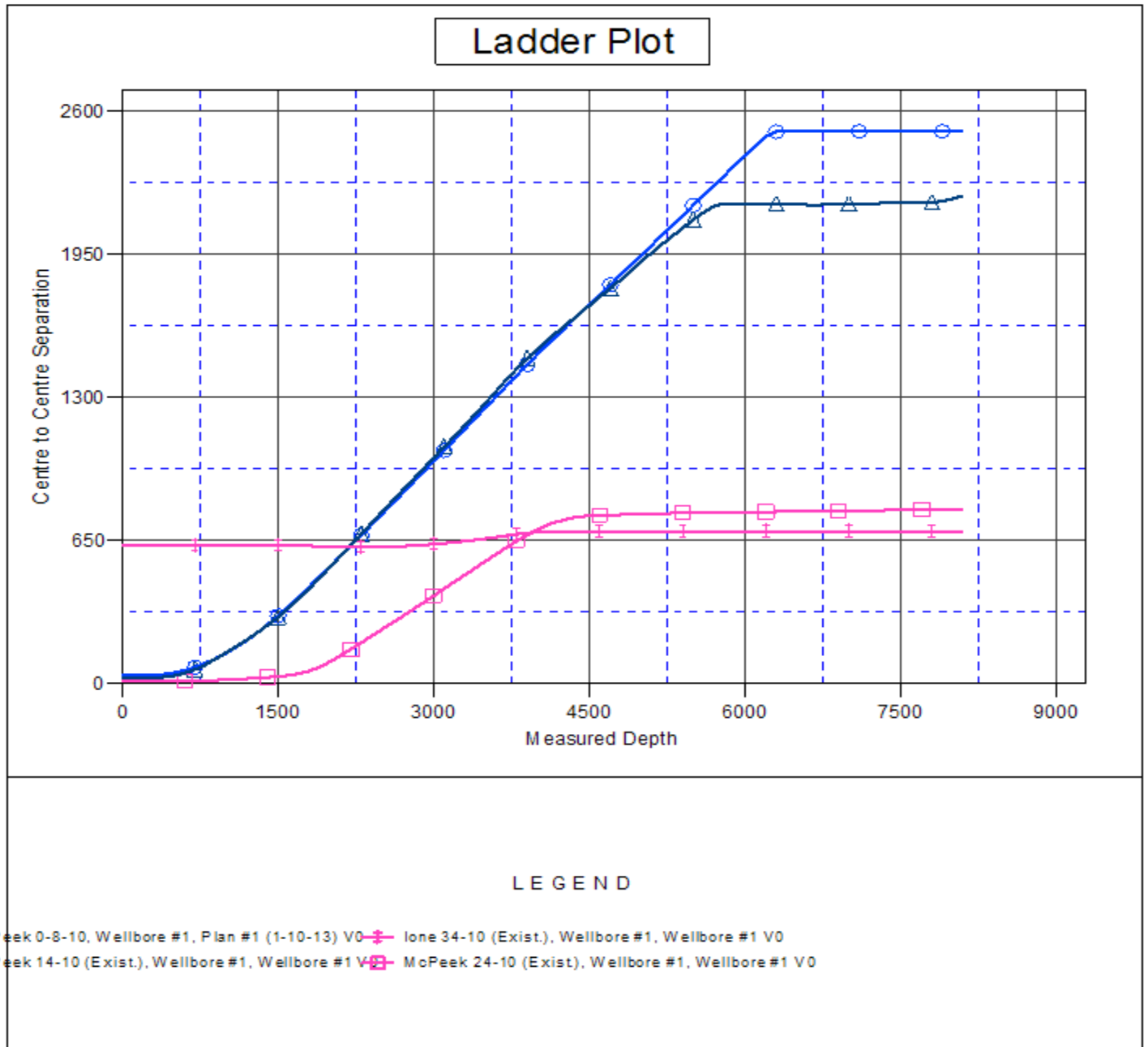
Offset Design													Offset Site Error:	0.0 ft
Survey Program: 0-MWD													Offset Well Error:	0.0 ft
Reference		Offset		Semi Major Axis			Distance							Warning
Measured Depth (ft)	Vertical Depth (ft)	Measured Depth (ft)	Vertical Depth (ft)	Reference (ft)	Offset (ft)	Highside Toolface (°)	Offset Wellbore Centre +N/-S (ft)	+E/-W (ft)	Between Centres (ft)	Between Ellipses (ft)	Minimum Separation (ft)	Separation Factor		
0.0	0.0	0.0	0.0	0.0	0.0	-139.20	-29.2	-25.2	38.5					
100.0	100.0	100.0	100.0	0.1	0.1	-139.20	-29.2	-25.2	38.5	38.3	0.22	171.327		
200.0	200.0	200.0	200.0	0.3	0.3	-139.20	-29.2	-25.2	38.5	37.8	0.67	57.109 CC, ES		
300.0	300.0	298.9	298.9	0.6	0.5	-137.62	-29.4	-26.8	39.8	38.7	1.11	35.879		
400.0	400.0	397.7	397.5	0.8	0.8	-133.46	-30.2	-31.9	44.0	42.5	1.55	28.329		
500.0	500.0	495.9	495.4	1.0	1.0	-128.10	-31.5	-40.2	51.3	49.3	2.01	25.578		
600.0	600.0	593.4	592.2	1.2	1.3	-122.80	-33.4	-51.8	62.1	59.7	2.47	25.185 SF		
700.0	700.0	690.1	687.7	1.5	1.6	-118.25	-35.7	-66.5	76.4	73.5	2.93	26.099		
800.0	800.0	785.6	781.5	1.7	2.0	-114.61	-38.5	-84.1	94.3	90.9	3.40	27.773		
900.0	900.0	879.8	873.5	1.9	2.4	-111.79	-41.7	-104.5	115.6	111.7	3.87	29.896		
1,000.0	1,000.0	972.6	963.2	2.1	2.9	-109.61	-45.4	-127.4	140.2	135.8	4.34	32.285		
1,100.0	1,100.0	1,063.7	1,050.7	2.4	3.4	-107.93	-49.4	-152.8	168.0	163.2	4.82	34.826		
1,200.0	1,200.0	1,153.0	1,135.6	2.6	3.9	-106.61	-53.8	-180.3	198.9	193.6	5.31	37.450		
1,300.0	1,300.0	1,240.5	1,217.8	2.8	4.5	-105.58	-58.5	-209.7	232.7	226.9	5.80	40.112		
1,400.0	1,400.0	1,326.0	1,297.2	3.0	5.2	-104.75	-63.4	-240.9	269.5	263.2	6.30	42.785		
1,500.0	1,500.0	1,409.4	1,373.8	3.3	5.9	-104.08	-68.6	-273.6	309.0	302.2	6.80	45.451		
1,600.0	1,600.0	1,490.7	1,447.4	3.5	6.6	86.88	-74.0	-307.5	351.1	343.8	7.22	48.595		
1,700.0	1,699.8	1,569.6	1,518.0	3.6	7.3	87.05	-79.5	-342.4	395.6	387.9	7.66	51.648		
1,800.0	1,799.5	1,657.9	1,596.4	3.8	8.2	87.58	-85.9	-382.5	441.4	433.3	8.13	54.320		
1,900.0	1,898.7	1,745.8	1,674.5	4.0	9.0	88.27	-92.3	-422.5	487.3	478.7	8.60	56.654		
2,000.0	1,997.5	1,833.3	1,752.1	4.2	9.9	89.06	-98.6	-462.2	533.6	524.5	9.10	58.610		
2,100.0	2,095.8	1,920.3	1,829.4	4.5	10.7	90.54	-104.9	-501.7	580.2	570.6	9.63	60.238		
2,200.0	2,194.0	2,007.2	1,906.6	4.8	11.6	92.13	-111.1	-541.2	627.3	617.1	10.19	61.534		
2,300.0	2,292.3	2,094.2	1,983.8	5.1	12.5	93.50	-117.4	-580.7	674.7	663.9	10.79	62.533		
2,400.0	2,390.6	2,181.1	2,061.0	5.4	13.4	94.69	-123.7	-620.2	722.4	711.0	11.41	63.296		
2,500.0	2,488.8	2,268.1	2,138.2	5.7	14.2	95.74	-130.0	-659.7	770.3	758.2	12.06	63.873		
2,600.0	2,587.1	2,355.0	2,215.4	6.1	15.1	96.67	-136.2	-699.2	818.3	805.6	12.73	64.305		
2,700.0	2,685.4	2,441.9	2,292.6	6.4	16.0	97.50	-142.5	-738.7	866.6	853.1	13.41	64.623		
2,800.0	2,783.6	2,528.9	2,369.8	6.8	16.8	98.24	-148.8	-778.3	914.9	900.8	14.11	64.853		
2,900.0	2,881.9	2,615.8	2,447.0	7.2	17.7	98.91	-155.1	-817.8	963.4	948.5	14.82	65.014		
3,000.0	2,980.2	2,702.8	2,524.2	7.5	18.6	99.51	-161.3	-857.3	1,011.9	996.4	15.54	65.122		
3,100.0	3,078.4	2,789.7	2,601.4	7.9	19.5	100.06	-167.6	-896.8	1,060.5	1,044.2	16.27	65.188		
3,200.0	3,176.7	2,876.7	2,678.6	8.3	20.3	100.56	-173.9	-936.3	1,109.2	1,092.2	17.01	65.222		
3,300.0	3,275.0	2,963.6	2,755.8	8.7	21.2	101.02	-180.2	-975.8	1,158.0	1,140.2	17.75	65.232		
3,400.0	3,373.2	3,050.6	2,833.0	9.1	22.1	101.44	-186.4	-1,015.3	1,206.8	1,188.3	18.50	65.222		
3,500.0	3,471.5	3,137.5	2,910.2	9.5	23.0	101.83	-192.7	-1,054.8	1,255.6	1,236.3	19.26	65.197		
3,600.0	3,569.8	3,224.5	2,987.4	9.9	23.9	102.19	-199.0	-1,094.3	1,304.5	1,284.5	20.02	65.161		
3,700.0	3,668.0	3,311.4	3,064.6	10.3	24.7	102.53	-205.3	-1,133.8	1,353.4	1,332.6	20.78	65.116		
3,800.0	3,766.6	3,398.7	3,142.0	10.6	25.6	103.84	-211.6	-1,173.4	1,402.0	1,380.4	21.69	64.651		
3,900.0	3,865.7	3,486.4	3,220.0	10.9	26.5	104.96	-217.9	-1,213.3	1,449.9	1,427.4	22.53	64.349		
4,000.0	3,965.2	3,574.6	3,298.3	11.1	27.4	105.90	-224.3	-1,253.4	1,497.0	1,473.7	23.35	64.109		
4,100.0	4,065.0	3,663.1	3,376.8	11.3	28.3	106.69	-230.7	-1,293.6	1,543.3	1,519.2	24.13	63.948		
4,200.0	4,164.9	3,751.8	3,455.6	11.5	29.2	107.32	-237.1	-1,333.9	1,588.7	1,563.9	24.87	63.874		
4,300.0	4,264.9	3,840.6	3,534.4	11.7	30.1	-83.82	-243.5	-1,374.2	1,633.5	1,608.1	25.41	64.275		
4,400.0	4,364.9	3,929.4	3,613.2	11.8	31.0	-84.23	-249.9	-1,414.6	1,678.2	1,652.4	25.86	64.900		
4,500.0	4,464.9	4,018.2	3,692.1	12.0	31.9	-84.62	-256.3	-1,454.9	1,723.0	1,696.7	26.31	65.500		
4,600.0	4,564.9	4,107.0	3,770.9	12.1	32.8	-84.99	-262.7	-1,495.3	1,767.9	1,741.2	26.76	66.077		
4,700.0	4,664.9	4,195.7	3,849.7	12.3	33.7	-85.34	-269.1	-1,535.6	1,812.9	1,785.7	27.21	66.632		
4,800.0	4,764.9	4,284.5	3,928.6	12.5	34.6	-85.67	-275.5	-1,576.0	1,857.9	1,830.2	27.66	67.166		
4,900.0	4,864.9	4,373.3	4,007.4	12.6	35.5	-85.99	-281.9	-1,616.3	1,902.9	1,874.8	28.12	67.679		
5,000.0	4,964.9	4,462.1	4,086.2	12.8	36.4	-86.29	-288.3	-1,656.6	1,948.0	1,919.4	28.57	68.172		
5,100.0	5,064.9	4,550.9	4,165.1	13.0	37.3	-86.58	-294.7	-1,697.0	1,993.1	1,964.1	29.03	68.646		

CC - Min centre to center distance or convergent point, SF - min separation factor, ES - min ellipse separation

McPeek 2-8-10 Pad Sec.10-T2N-R66W - McPeek 0-8-10 - Wellbore #1 - Plan #1 (1-10-13)													Offset Site Error:	0.0 ft
Survey Program: 0-MWD													Offset Well Error:	0.0 ft
Reference		Offset		Semi Major Axis			Distance							Warning
Measured Depth	Vertical Depth	Measured Depth	Vertical Depth	Reference	Offset	Highside Toolface	Offset Wellbore Centre		Between Centres	Between Ellipses	Minimum Separation	Separation Factor		
Depth (ft)	Depth (ft)	Depth (ft)	Depth (ft)	(ft)	(ft)	(°)	+N/-S (ft)	+E/-W (ft)	(ft)	(ft)	(ft)			
5,200.0	5,164.9	4,639.7	4,243.9	13.1	38.2	-86.86	-301.1	-1,737.3	2,038.3	2,008.8	29.50	69.102		
5,300.0	5,264.9	4,728.5	4,322.7	13.3	39.1	-87.13	-307.5	-1,777.7	2,083.5	2,053.5	29.96	69.541		
5,400.0	5,364.9	4,817.3	4,401.6	13.5	40.0	-87.38	-314.0	-1,818.0	2,128.7	2,098.3	30.43	69.962		
5,500.0	5,464.9	4,906.1	4,480.4	13.6	40.9	-87.62	-320.4	-1,858.4	2,174.0	2,143.1	30.89	70.368		
5,600.0	5,564.9	4,994.8	4,559.3	13.8	41.8	-87.86	-326.8	-1,898.7	2,219.3	2,187.9	31.36	70.758		
5,700.0	5,664.9	5,083.6	4,638.1	14.0	42.7	-88.08	-333.2	-1,939.0	2,264.6	2,232.8	31.84	71.133		
5,800.0	5,764.9	5,172.4	4,716.9	14.2	43.6	-88.30	-339.6	-1,979.4	2,310.0	2,277.7	32.31	71.494		
5,900.0	5,864.9	5,261.2	4,795.8	14.4	44.5	-88.51	-346.0	-2,019.7	2,355.4	2,322.6	32.79	71.841		
6,000.0	5,964.9	5,350.0	4,874.6	14.5	45.4	-88.71	-352.4	-2,060.1	2,400.8	2,367.5	33.26	72.176		
6,100.0	6,064.9	5,438.8	4,953.4	14.7	46.3	-88.90	-358.8	-2,100.4	2,446.2	2,412.5	33.74	72.498		
6,200.0	6,164.9	5,870.8	5,348.7	14.9	49.4	-89.64	-386.0	-2,271.7	2,487.7	2,452.6	35.11	70.848		
6,300.0	6,264.9	6,579.4	6,039.2	15.1	52.0	-90.21	-409.7	-2,420.5	2,509.0	2,472.2	36.73	68.312		
6,400.0	6,364.9	6,905.5	6,364.9	15.3	52.3	-90.25	-411.5	-2,432.2	2,510.5	2,473.2	37.32	67.266		
6,500.0	6,464.9	7,005.5	6,464.9	15.5	52.4	-90.25	-411.5	-2,432.2	2,510.5	2,472.9	37.63	66.725		
6,600.0	6,564.9	7,105.5	6,564.9	15.7	52.5	-90.25	-411.5	-2,432.2	2,510.5	2,472.6	37.93	66.187		
6,700.0	6,664.9	7,205.5	6,664.9	15.8	52.5	-90.25	-411.5	-2,432.2	2,510.5	2,472.3	38.24	65.654		
6,800.0	6,764.9	7,305.5	6,764.9	16.0	52.6	-90.25	-411.5	-2,432.2	2,510.5	2,472.0	38.55	65.125		
6,900.0	6,864.9	7,405.5	6,864.9	16.2	52.6	-90.25	-411.5	-2,432.2	2,510.5	2,471.7	38.86	64.600		
7,000.0	6,964.9	7,505.5	6,964.9	16.4	52.7	-90.25	-411.5	-2,432.2	2,510.5	2,471.4	39.18	64.080		
7,100.0	7,064.9	7,605.5	7,064.9	16.6	52.8	-90.25	-411.5	-2,432.2	2,510.5	2,471.0	39.50	63.564		
7,200.0	7,164.9	7,705.5	7,164.9	16.8	52.8	-90.25	-411.5	-2,432.2	2,510.5	2,470.7	39.82	63.053		
7,300.0	7,264.9	7,805.5	7,264.9	17.0	52.9	-90.25	-411.5	-2,432.2	2,510.5	2,470.4	40.14	62.547		
7,400.0	7,364.9	7,905.5	7,364.9	17.2	52.9	-90.25	-411.5	-2,432.2	2,510.5	2,470.1	40.46	62.045		
7,500.0	7,464.9	8,005.5	7,464.9	17.4	53.0	-90.25	-411.5	-2,432.2	2,510.5	2,469.8	40.79	61.548		
7,600.0	7,564.9	8,105.5	7,564.9	17.6	53.1	-90.25	-411.5	-2,432.2	2,510.5	2,469.4	41.12	61.055		
7,700.0	7,664.9	8,205.5	7,664.9	17.8	53.1	-90.25	-411.5	-2,432.2	2,510.5	2,469.1	41.45	60.568		
7,800.0	7,764.9	8,305.5	7,764.9	18.0	53.2	-90.25	-411.5	-2,432.2	2,510.5	2,468.8	41.78	60.085		
7,900.0	7,864.9	8,405.5	7,864.9	18.2	53.3	-90.25	-411.5	-2,432.2	2,510.5	2,468.4	42.12	59.608		
8,000.0	7,964.9	8,505.5	7,964.9	18.4	53.4	-90.25	-411.5	-2,432.2	2,510.5	2,468.1	42.45	59.135		
8,088.1	8,053.0	8,593.6	8,053.0	18.6	53.4	-90.25	-411.5	-2,432.2	2,510.5	2,467.8	42.75	58.722		

Company:	EnCana Oil & Gas Weld County CO	Local Co-ordinate Reference:	Well McPeek 4-8-10
Project:	SEC.10-T2N-R66W	TVD Reference:	WELL @ 5001.0ft (Original Well Elev)
Reference Site:	McPeek 2-8-10 Pad Sec.10-T2N-R66W	MD Reference:	WELL @ 5001.0ft (Original Well Elev)
Site Error:	0.0ft	North Reference:	True
Reference Well:	McPeek 4-8-10	Survey Calculation Method:	Minimum Curvature
Well Error:	0.0ft	Output errors are at	2.00 sigma
Reference Wellbore	Wellbore #1	Database:	Landmark
Reference Design:	Plan #1 (1-10-13)	Offset TVD Reference:	Offset Datum

Reference Depths are relative to WELL @ 5001.0ft (Original Well Elev) Coordinates are relative to: McPeek 4-8-10
 Offset Depths are relative to Offset Datum
 Central Meridian is -105.500000 °
 Coordinate System is US State Plane 1983, Colorado Northern Zone
 Grid Convergence at Surface is: 0.48°



Company:	EnCana Oil & Gas Weld County CO	Local Co-ordinate Reference:	Well McPeek 4-8-10
Project:	SEC.10-T2N-R66W	TVD Reference:	WELL @ 5001.0ft (Original Well Elev)
Reference Site:	McPeek 2-8-10 Pad Sec.10-T2N-R66W	MD Reference:	WELL @ 5001.0ft (Original Well Elev)
Site Error:	0.0ft	North Reference:	True
Reference Well:	McPeek 4-8-10	Survey Calculation Method:	Minimum Curvature
Well Error:	0.0ft	Output errors are at	2.00 sigma
Reference Wellbore	Wellbore #1	Database:	Landmark
Reference Design:	Plan #1 (1-10-13)	Offset TVD Reference:	Offset Datum

Reference Depths are relative to WELL @ 5001.0ft (Original Well Elev) Coordinates are relative to: McPeek 4-8-10
Offset Depths are relative to Offset Datum Coordinate System is US State Plane 1983, Colorado Northern Zone
Central Meridian is -105.500000 ° Grid Convergence at Surface is: 0.48°

