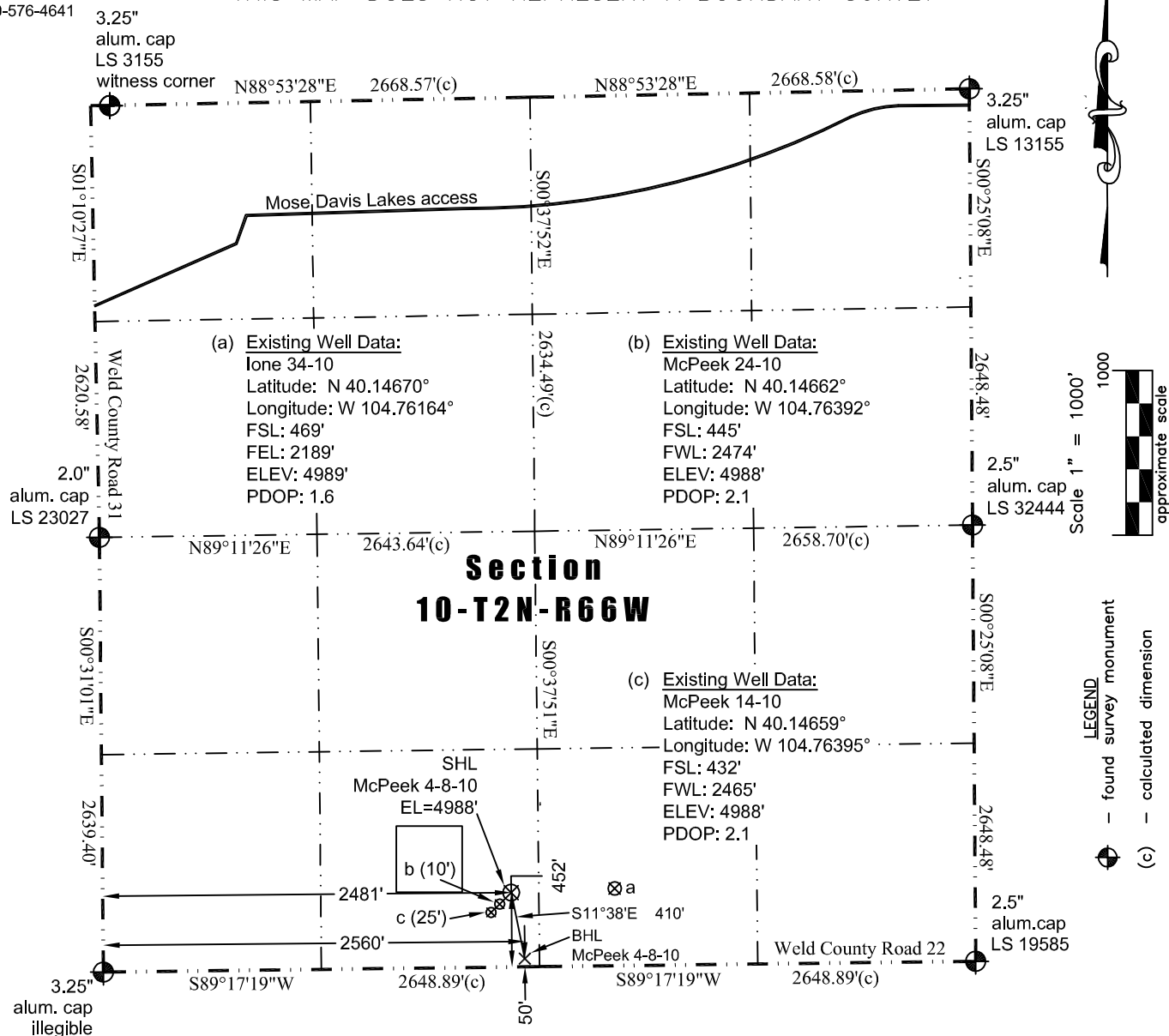


8114 Northstar Drive
Windsor, Colorado 80528
P. 970-576-4641 3 35"

THIS MAP DOES NOT REPRESENT A BOUNDARY SURVEY



In accordance with a request from Jay Knutson of EnCana Oil & Gas (USA) Inc., JR Land Surveying, LLC has determined the location of the **McPeek 4-8-10** well site to be SHL: 452' FSL and 2481' FWL, (BHL 50' FSL and 2560' FWL) as measured at ninety (90) degrees from the section lines of Section 10, Township 2 North, Range 66 West, 6th Principal Meridian, County of Weld, CO.

Latitude: N 40.14664° (BHL: 40.14554°)
Longitude: W 104.76389° (BHL: 104.76361°)
PDOP: 1.7

Building: 2803' southwest Above Ground Utility: 2147' southeast
Public Road: 446' south Railroad: 12,749' southwest
Property Line: 167' east Well Window: SHL is 297' outside
Existing Well: McPeck 24-10, 10' southwest

- 1) Bearings and distances based on NAD 83 Colorado North State Plane Coordinates using RTK GPS observations taken 1/3/13 by operator John Rice.
- 2) Conversion factor to ground (1.000275398).
- 3) Elevations based on NAVD 88 GPS heights and Geoid 2003 corrections.
- 4) See Location Drawing for visible improvements within 400 feet.
- 5) The surface use is cultivated field.

NOTICE: According to Colorado law you must commence any legal action based upon any defect in this W.L.C. within three years after you first discover such defect. In no event may any action based upon any defect in this W.L.C. be commenced more than ten years from this said date of the certification shown hereon.

I hereby certify that this Well Location Certificate was prepared by me or under my direct supervision on 1/11/2013 for and on behalf of, EnCana Oil & Gas (USA) Inc. That it is not a Land Survey Plat or an Improvement Survey Plat and that it is not to be relied upon for establishment of fences, buildings, or other future improvement lines.

John Robert McGehee LS#38219
Well: McPeck 4-8-10 WLC