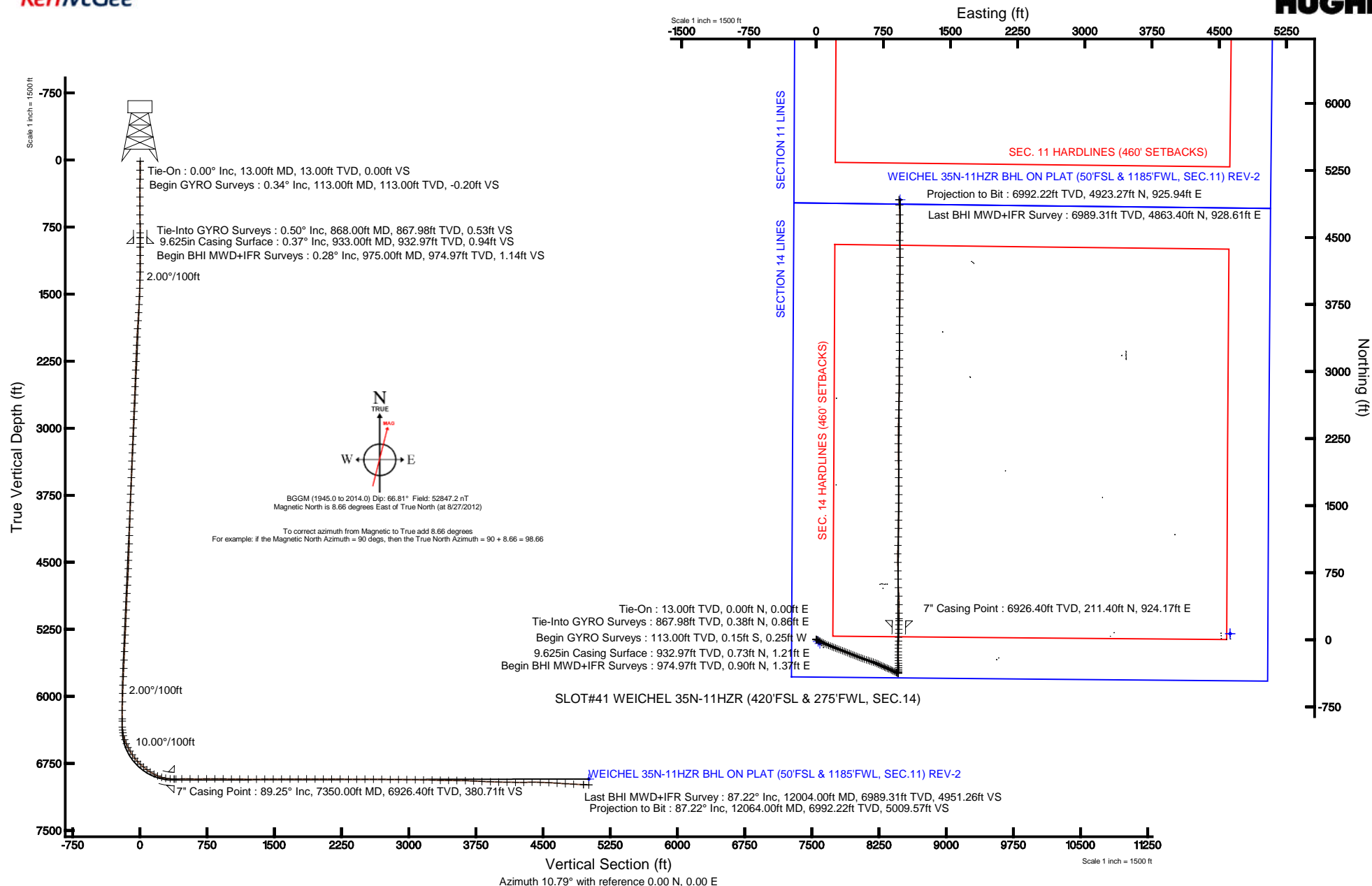


Location:	COLORADO	Slot:	SLOT#41 WEICHEL 35N-11HZR (420'FSL & 275'FWL, SEC.14)
Field:	WELD COUNTY (KERR MCGEE)	Well:	WEICHEL 35N-11HZR
Facility:	SEC.14-T2N-R65W	Wellbore:	WEICHEL 35N-11HZR PWB

Plot reference wellpath is WEICHEL 35N-11HZR (REV-C.0) PWP	
True vertical depths are referenced to ENSGIN 145 (RKB)	Grid System: NAD83 / Lambert Colorado SP, Northern Zone (501), US feet
Measured depths are referenced to ENSGIN 145 (RKB)	North Reference: True north
ENSGIN 145 (RKB) to Mean Sea Level: 4906 feet	Scale: True distance
Mean Sea Level to Mud line (At Slot: SLOT#41 WEICHEL 35N-11HZR (420'FSL & 275'FWL, SEC.14)): 0 feet	Depths are in feet
Coordinates are in feet referenced to Slot	Created by: wilsje02 on 1/16/2013





# Actual Wellpath Report

WEICHEL 35N-11HZR AWP

Page 1 of 7



## REFERENCE WELLPATH IDENTIFICATION

Operator	KERR-MCGEE OIL & GAS ONSHORE LP	Slot	SLOT#41 WEICHEL 35N-11HZR (420'FSL & 275'FWL, SEC.14)
Area	COLORADO	Well	WEICHEL 35N-11HZR
Field	WELD COUNTY (KERR MCGEE)	Wellbore	WEICHEL 35N-11HZR AWB
Facility	SEC.14-T2N-R65W		

## REPORT SETUP INFORMATION

Projection System	NAD83 / Lambert Colorado SP, Northern Zone (501), US feet	Software System	WellArchitect® 3.0.2
North Reference	True	User	Wilsjef02
Scale	0.999959	Report Generated	1/16/2013 at 12:04:52
Convergence at slot	0.56° East	Database/Source file	WellArchitectDB/WEICHEL_35N-11HZR_AWB.xml

## WELLPATH LOCATION

	Local coordinates		Grid coordinates		Geographic coordinates	
	North[ft]	East[ft]	Easting[US ft]	Northing[US ft]	Latitude	Longitude
Slot Location	-4210.79	-1755.17	3240558.85	1292288.16	40°07'57.076"N	104°38'22.729"W
Facility Reference Pt			3242272.71	1296515.72	40°08'38.688"N	104°38'00.132"W
Field Reference Pt			3197771.84	1268891.29	40°04'09.600"N	104°47'36.000"W

## WELLPATH DATUM

Calculation method	Minimum curvature	ENSGIN 145 (RKB) to Facility Vertical Datum	4906.00ft
Horizontal Reference Pt	Slot	ENSGIN 145 (RKB) to Mean Sea Level	4906.00ft
Vertical Reference Pt	ENSGIN 145 (RKB)	ENSGIN 145 (RKB) to Mud Line at Slot (SLOT#41 WEICHEL 35N-11HZR (420'FSL & 275'FWL, SEC.14))	4906.00ft
MD Reference Pt	ENSGIN 145 (RKB)	Section Origin	N 0.00, E 0.00 ft
Field Vertical Reference	Mean Sea Level	Section Azimuth	10.65°



# Actual Wellpath Report

WEICHEL 35N-11HZR AWP

Page 2 of 7



## REFERENCE WELLPATH IDENTIFICATION

Operator	KERR-MCGEE OIL & GAS ONSHORE LP	Slot	SLOT#41 WEICHEL 35N-11HZR (420'FSL & 275'FWL, SEC.14)
Area	COLORADO	Well	WEICHEL 35N-11HZR
Field	WELD COUNTY (KERR MCGEE)	Wellbore	WEICHEL 35N-11HZR AWB
Facility	SEC.14-T2N-R65W		

## WELLPATH DATA (142 stations) † = interpolated/extrapolated station

MD [ft]	Inclination [°]	Azimuth [°]	TVD [ft]	Vert Sect [ft]	North [ft]	East [ft]	Latitude	Longitude	DLS [°/100ft]	Comments
0.00†	0.000	239.070	0.00	0.00	0.00	0.00	40°07'57.076"N	104°38'22.729"W	0.00	
13.00	0.000	239.070	13.00	0.00	0.00	0.00	40°07'57.076"N	104°38'22.729"W	0.00	Tie-On
113.00	0.340	239.070	113.00	-0.20	-0.15	-0.25	40°07'57.074"N	104°38'22.732"W	0.34	Begin GYRO Surveys
213.00	0.500	269.760	213.00	-0.48	-0.31	-0.95	40°07'57.073"N	104°38'22.741"W	0.27	
313.00	0.480	237.620	312.99	-0.84	-0.53	-1.74	40°07'57.071"N	104°38'22.751"W	0.27	
413.00	0.220	209.110	412.99	-1.31	-0.93	-2.18	40°07'57.067"N	104°38'22.757"W	0.31	
513.00	0.550	103.070	512.99	-1.51	-1.20	-1.81	40°07'57.064"N	104°38'22.752"W	0.65	
613.00	0.480	44.800	612.99	-1.19	-1.01	-1.05	40°07'57.066"N	104°38'22.742"W	0.51	
713.00	0.560	49.880	712.98	-0.46	-0.40	-0.38	40°07'57.072"N	104°38'22.734"W	0.09	
813.00	0.560	67.570	812.98	0.18	0.10	0.45	40°07'57.077"N	104°38'22.723"W	0.17	
868.00	0.500	44.020	867.98	0.53	0.38	0.86	40°07'57.080"N	104°38'22.718"W	0.41	Tie-Into GYRO Surveys
975.00	0.280	44.290	974.97	1.14	0.90	1.37	40°07'57.085"N	104°38'22.711"W	0.21	Begin BHI MWD+IFR Surveys
1067.00	1.260	116.310	1066.96	1.05	0.61	2.43	40°07'57.082"N	104°38'22.698"W	1.31	
1159.00	2.110	115.210	1158.92	0.35	-0.56	4.87	40°07'57.070"N	104°38'22.666"W	0.92	
1251.00	3.260	108.730	1250.82	-0.44	-2.12	8.88	40°07'57.055"N	104°38'22.615"W	1.29	
1344.00	4.810	120.550	1343.59	-2.14	-4.95	14.75	40°07'57.027"N	104°38'22.539"W	1.88	
1436.00	6.730	113.100	1435.12	-4.62	-9.03	23.03	40°07'56.987"N	104°38'22.433"W	2.24	
1528.00	8.350	118.450	1526.32	-7.82	-14.32	33.86	40°07'56.934"N	104°38'22.293"W	1.92	
1620.00	9.690	117.250	1617.18	-12.07	-21.05	46.62	40°07'56.868"N	104°38'22.129"W	1.47	
1712.00	12.200	118.340	1707.50	-17.24	-29.21	62.06	40°07'56.787"N	104°38'21.930"W	2.74	
1804.00	13.220	116.790	1797.25	-23.12	-38.57	80.01	40°07'56.695"N	104°38'21.699"W	1.17	
1896.00	12.540	115.980	1886.93	-28.68	-47.69	98.37	40°07'56.605"N	104°38'21.462"W	0.76	
1991.00	12.730	114.330	1979.63	-33.88	-56.52	117.18	40°07'56.517"N	104°38'21.220"W	0.43	
2086.00	13.590	111.470	2072.14	-38.45	-64.91	137.11	40°07'56.435"N	104°38'20.964"W	1.14	
2181.00	13.140	111.270	2164.56	-42.54	-72.92	157.56	40°07'56.355"N	104°38'20.701"W	0.48	
2275.00	12.680	112.060	2256.19	-46.55	-80.67	177.08	40°07'56.279"N	104°38'20.449"W	0.52	
2370.00	12.350	110.690	2348.93	-50.38	-88.17	196.24	40°07'56.205"N	104°38'20.202"W	0.47	
2465.00	11.650	109.560	2441.85	-53.64	-94.97	214.79	40°07'56.137"N	104°38'19.964"W	0.78	
2560.00	12.270	111.480	2534.79	-57.02	-101.88	233.22	40°07'56.069"N	104°38'19.726"W	0.78	
2655.00	12.830	110.520	2627.52	-60.72	-109.28	252.49	40°07'55.996"N	104°38'19.478"W	0.63	
2750.00	13.710	112.160	2719.98	-64.78	-117.22	272.80	40°07'55.918"N	104°38'19.217"W	1.01	
2845.00	12.730	111.050	2812.47	-68.91	-125.23	292.99	40°07'55.838"N	104°38'18.957"W	1.07	
2939.00	12.070	111.730	2904.27	-72.67	-132.58	311.79	40°07'55.766"N	104°38'18.715"W	0.72	
3034.00	12.860	112.180	2997.03	-76.69	-140.25	330.80	40°07'55.690"N	104°38'18.470"W	0.84	
3129.00	12.780	111.790	3089.66	-80.84	-148.14	350.35	40°07'55.612"N	104°38'18.218"W	0.12	
3224.00	12.690	111.500	3182.33	-84.83	-155.87	369.81	40°07'55.536"N	104°38'17.968"W	0.12	
3319.00	12.460	110.670	3275.05	-88.58	-163.31	389.11	40°07'55.462"N	104°38'17.719"W	0.31	
3414.00	11.900	110.700	3367.91	-92.07	-170.39	407.86	40°07'55.392"N	104°38'17.478"W	0.59	
3508.00	12.400	110.500	3459.80	-95.49	-177.35	426.38	40°07'55.323"N	104°38'17.240"W	0.53	
3603.00	12.260	112.530	3552.61	-99.31	-184.79	445.25	40°07'55.250"N	104°38'16.997"W	0.48	
3698.00	11.530	112.020	3645.57	-103.25	-192.21	463.37	40°07'55.176"N	104°38'16.763"W	0.78	
3793.00	11.840	109.940	3738.60	-106.70	-199.10	481.34	40°07'55.108"N	104°38'16.532"W	0.55	
3888.00	11.980	110.820	3831.56	-110.01	-205.92	499.71	40°07'55.041"N	104°38'16.295"W	0.24	
3983.00	12.820	108.320	3924.34	-113.16	-212.74	518.94	40°07'54.974"N	104°38'16.048"W	1.05	
4077.00	13.040	108.890	4015.96	-116.07	-219.45	538.87	40°07'54.907"N	104°38'15.791"W	0.27	



# Actual Wellpath Report

WEICHEL 35N-11HZR AWP

Page 3 of 7



## REFERENCE WELLPATH IDENTIFICATION

Operator	KERR-MCGEE OIL & GAS ONSHORE LP	Slot	SLOT#41 WEICHEL 35N-11HZR (420'FSL & 275'FWL, SEC.14)
Area	COLORADO	Well	WEICHEL 35N-11HZR
Field	WELD COUNTY (KERR MCGEE)	Wellbore	WEICHEL 35N-11HZR AWB
Facility	SEC.14-T2N-R65W		

## WELLPATH DATA (142 stations)

MD [ft]	Inclination [°]	Azimuth [°]	TVD [ft]	Vert Sect [ft]	North [ft]	East [ft]	Latitude	Longitude	DLS [°/100ft]	Comments
4172.00	12.990	109.160	4108.52	-119.19	-226.43	559.10	40°07'54.838"N	104°38'15.531"W	0.08	
4267.00	12.660	107.310	4201.15	-121.97	-233.03	579.12	40°07'54.773"N	104°38'15.273"W	0.55	
4362.00	12.210	107.820	4293.92	-124.43	-239.20	598.62	40°07'54.712"N	104°38'15.022"W	0.49	
4457.00	13.040	109.190	4386.62	-127.28	-245.80	618.31	40°07'54.647"N	104°38'14.769"W	0.93	
4552.00	12.740	108.360	4479.23	-130.28	-252.62	638.37	40°07'54.579"N	104°38'14.510"W	0.37	
4647.00	12.590	112.730	4571.92	-133.85	-259.92	657.87	40°07'54.507"N	104°38'14.259"W	1.02	
4742.00	12.610	112.450	4664.63	-138.13	-267.88	677.00	40°07'54.429"N	104°38'14.013"W	0.07	
4836.00	12.090	116.390	4756.46	-142.90	-276.18	695.30	40°07'54.347"N	104°38'13.777"W	1.05	
4931.00	11.770	114.790	4849.41	-147.97	-284.66	713.01	40°07'54.263"N	104°38'13.549"W	0.48	
5026.00	11.480	113.920	4942.46	-152.50	-292.56	730.45	40°07'54.185"N	104°38'13.325"W	0.36	
5121.00	10.470	114.550	5035.72	-156.75	-299.98	746.94	40°07'54.111"N	104°38'13.113"W	1.07	
5216.00	10.290	113.750	5129.16	-160.74	-306.98	762.56	40°07'54.042"N	104°38'12.912"W	0.24	
5310.00	11.040	114.180	5221.54	-164.75	-314.05	778.45	40°07'53.972"N	104°38'12.707"W	0.80	
5405.00	10.600	111.700	5314.85	-168.55	-321.00	794.87	40°07'53.904"N	104°38'12.496"W	0.67	
5500.00	11.000	115.870	5408.17	-172.61	-328.19	811.14	40°07'53.833"N	104°38'12.286"W	0.92	
5595.00	10.140	114.470	5501.56	-176.99	-335.61	826.91	40°07'53.759"N	104°38'12.083"W	0.94	
5690.00	9.870	115.390	5595.11	-181.05	-342.56	841.88	40°07'53.691"N	104°38'11.890"W	0.33	
5784.00	9.540	117.230	5687.77	-185.33	-349.58	856.08	40°07'53.621"N	104°38'11.707"W	0.48	
5879.00	9.710	116.170	5781.43	-189.72	-356.72	870.27	40°07'53.551"N	104°38'11.525"W	0.26	
5974.00	9.010	114.420	5875.16	-193.63	-363.33	884.24	40°07'53.485"N	104°38'11.345"W	0.80	
6069.00	7.070	115.570	5969.23	-196.91	-368.93	896.29	40°07'53.430"N	104°38'11.190"W	2.05	
6164.00	5.440	113.200	6063.66	-199.39	-373.22	905.70	40°07'53.388"N	104°38'11.069"W	1.74	
6259.00	3.420	113.730	6158.37	-201.01	-376.14	912.43	40°07'53.359"N	104°38'10.982"W	2.13	
6354.00	1.060	130.510	6253.29	-202.09	-377.85	915.70	40°07'53.342"N	104°38'10.940"W	2.55	
6379.00	1.120	132.090	6278.29	-202.33	-378.16	916.05	40°07'53.339"N	104°38'10.935"W	0.27	
6448.00	2.220	22.370	6347.27	-201.37	-377.38	917.06	40°07'53.347"N	104°38'10.922"W	4.06	
6480.00	5.930	6.880	6379.18	-199.12	-375.16	917.50	40°07'53.368"N	104°38'10.917"W	11.99	
6511.00	9.910	5.440	6409.88	-194.86	-370.92	917.94	40°07'53.410"N	104°38'10.911"W	12.85	
6543.00	14.120	4.800	6441.17	-188.23	-364.28	918.53	40°07'53.476"N	104°38'10.904"W	13.16	
6590.00	19.610	4.480	6486.13	-174.68	-350.70	919.63	40°07'53.610"N	104°38'10.889"W	11.68	
6638.00	23.910	1.440	6530.70	-157.06	-332.93	920.50	40°07'53.786"N	104°38'10.878"W	9.26	
6685.00	27.150	358.780	6573.11	-137.16	-312.69	920.51	40°07'53.986"N	104°38'10.878"W	7.31	
6733.00	30.400	357.910	6615.18	-114.59	-289.59	919.83	40°07'54.214"N	104°38'10.887"W	6.83	
6780.00	34.630	358.280	6654.80	-89.93	-264.35	919.00	40°07'54.464"N	104°38'10.897"W	9.01	
6828.00	37.760	359.420	6693.53	-62.19	-236.01	918.44	40°07'54.744"N	104°38'10.905"W	6.67	
6875.00	42.980	359.020	6729.33	-32.36	-205.58	918.02	40°07'55.044"N	104°38'10.910"W	11.12	
6922.00	47.670	358.680	6762.37	0.34	-172.18	917.35	40°07'55.374"N	104°38'10.919"W	9.99	
6969.00	51.020	359.510	6792.98	35.27	-136.53	916.79	40°07'55.727"N	104°38'10.926"W	7.25	
7017.00	55.100	0.910	6821.82	73.00	-98.18	916.94	40°07'56.106"N	104°38'10.924"W	8.81	
7064.00	58.330	2.220	6847.61	111.79	-58.91	918.02	40°07'56.494"N	104°38'10.910"W	7.26	
7112.00	60.980	1.950	6871.86	152.74	-17.52	919.53	40°07'56.903"N	104°38'10.890"W	5.54	
7159.00	67.330	0.820	6892.34	194.47	24.75	920.54	40°07'57.320"N	104°38'10.877"W	13.68	
7207.00	74.110	1.160	6908.18	239.11	70.02	921.33	40°07'57.768"N	104°38'10.867"W	14.14	
7254.00	80.490	1.280	6918.51	284.31	115.84	922.30	40°07'58.221"N	104°38'10.855"W	13.58	
7305.00	85.960	1.120	6924.52	334.25	166.45	923.36	40°07'58.721"N	104°38'10.841"W	10.73	

### REFERENCE WELLPATH IDENTIFICATION

Operator	KERR-MCGEE OIL & GAS ONSHORE LP	Slot	SLOT#41 WEICHEL 35N-11HZR (420'FSL & 275'FWL, SEC.14)
Area	COLORADO	Well	WEICHEL 35N-11HZR
Field	WELD COUNTY (KERR MCGEE)	Wellbore	WEICHEL 35N-11HZR AWB
Facility	SEC.14-T2N-R65W		

### WELLPATH DATA (142 stations) † = interpolated/extrapolated station

MD [ft]	Inclination [°]	Azimuth [°]	TVD [ft]	Vert Sect [ft]	North [ft]	East [ft]	Latitude	Longitude	DLS [°/100ft]	Comments
7350.00†	89.253	0.936	6926.40	378.57	211.40	924.17	40°07'59.165"N	104°38'10.831"W	7.33	7" Casing Point
7371.00	90.790	0.850	6926.39	399.27	232.40	924.49	40°07'59.372"N	104°38'10.826"W	7.33	
7435.00	90.700	0.530	6925.56	462.30	296.39	925.27	40°08'00.005"N	104°38'10.816"W	0.52	
7529.00	89.500	359.450	6925.40	554.67	390.38	925.25	40°08'00.934"N	104°38'10.817"W	1.72	
7624.00	90.000	357.450	6925.81	647.52	485.34	922.68	40°08'01.872"N	104°38'10.850"W	2.17	
7719.00	90.580	356.780	6925.33	739.88	580.22	917.90	40°08'02.810"N	104°38'10.911"W	0.93	
7814.00	90.360	359.050	6924.55	832.53	675.15	914.44	40°08'03.748"N	104°38'10.956"W	2.40	
7908.00	88.980	358.520	6925.09	924.52	769.12	912.45	40°08'04.676"N	104°38'10.981"W	1.57	
8003.00	88.800	359.710	6926.93	1017.58	864.09	910.98	40°08'05.615"N	104°38'11.000"W	1.27	
8098.00	89.930	0.060	6927.99	1110.90	959.08	910.79	40°08'06.554"N	104°38'11.003"W	1.25	
8193.00	89.690	2.730	6928.30	1204.66	1054.05	913.10	40°08'07.492"N	104°38'10.973"W	2.82	
8288.00	90.090	1.630	6928.48	1298.62	1148.98	916.72	40°08'08.430"N	104°38'10.926"W	1.23	
8382.00	90.980	1.200	6927.61	1391.39	1242.94	919.04	40°08'09.359"N	104°38'10.896"W	1.05	
8477.00	89.660	0.390	6927.08	1484.99	1337.93	920.36	40°08'10.297"N	104°38'10.879"W	1.63	
8572.00	90.120	0.900	6927.26	1578.54	1432.92	921.43	40°08'11.236"N	104°38'10.865"W	0.72	
8667.00	90.760	359.770	6926.53	1672.00	1527.91	921.98	40°08'12.175"N	104°38'10.858"W	1.37	
8762.00	89.780	359.950	6926.08	1765.32	1622.91	921.75	40°08'13.114"N	104°38'10.861"W	1.05	
8857.00	90.400	0.070	6925.93	1858.68	1717.91	921.77	40°08'14.052"N	104°38'10.861"W	0.66	
8952.00	89.130	359.580	6926.32	1951.99	1812.91	921.48	40°08'14.991"N	104°38'10.865"W	1.43	
9046.00	89.660	358.800	6927.31	2044.11	1906.89	920.15	40°08'15.920"N	104°38'10.882"W	1.00	
9141.00	90.400	358.300	6927.26	2137.00	2001.86	917.74	40°08'16.858"N	104°38'10.913"W	0.94	
9237.00	89.160	0.000	6927.63	2231.06	2097.84	916.32	40°08'17.807"N	104°38'10.931"W	2.19	
9332.00	89.690	0.060	6928.59	2324.43	2192.84	916.37	40°08'18.746"N	104°38'10.930"W	0.56	
9426.00	90.060	0.820	6928.79	2416.94	2286.84	917.09	40°08'19.675"N	104°38'10.921"W	0.90	
9521.00	90.610	0.440	6928.24	2510.49	2381.83	918.14	40°08'20.613"N	104°38'10.907"W	0.70	
9616.00	88.760	1.800	6928.76	2604.17	2476.80	919.99	40°08'21.552"N	104°38'10.883"W	2.42	
9711.00	89.590	1.470	6930.13	2697.99	2571.75	922.70	40°08'22.490"N	104°38'10.848"W	0.94	
9806.00	89.010	1.110	6931.29	2791.71	2666.72	924.84	40°08'23.429"N	104°38'10.821"W	0.72	
9900.00	89.960	0.430	6932.13	2884.31	2760.71	926.10	40°08'24.357"N	104°38'10.804"W	1.24	
9995.00	88.550	0.530	6933.37	2977.81	2855.69	926.90	40°08'25.296"N	104°38'10.794"W	1.49	
10090.00	89.100	0.650	6935.31	3071.33	2950.67	927.88	40°08'26.235"N	104°38'10.782"W	0.59	
10185.00	89.560	0.480	6936.43	3164.85	3045.66	928.81	40°08'27.173"N	104°38'10.769"W	0.52	
10280.00	88.270	0.380	6938.22	3258.33	3140.63	929.53	40°08'28.112"N	104°38'10.760"W	1.36	
10375.00	88.640	0.060	6940.79	3351.72	3235.60	929.89	40°08'29.050"N	104°38'10.755"W	0.51	
10469.00	89.290	359.870	6942.48	3444.08	3329.58	929.83	40°08'29.979"N	104°38'10.756"W	0.72	
10564.00	89.750	359.960	6943.28	3537.41	3424.58	929.69	40°08'30.918"N	104°38'10.758"W	0.49	
10659.00	88.360	1.030	6944.85	3630.91	3519.56	930.51	40°08'31.856"N	104°38'10.747"W	1.85	
10753.00	86.730	0.940	6948.87	3723.48	3613.46	932.13	40°08'32.784"N	104°38'10.727"W	1.74	
10848.00	87.280	0.300	6953.84	3816.90	3708.32	933.15	40°08'33.722"N	104°38'10.713"W	0.89	
10943.00	88.090	0.340	6957.67	3910.29	3803.24	933.69	40°08'34.660"N	104°38'10.706"W	0.85	
11038.00	88.610	0.320	6960.41	4003.71	3898.20	934.23	40°08'35.598"N	104°38'10.699"W	0.55	
11133.00	89.130	0.260	6962.28	4097.14	3993.18	934.71	40°08'36.537"N	104°38'10.693"W	0.55	
11228.00	89.600	0.250	6963.34	4190.58	4088.17	935.14	40°08'37.475"N	104°38'10.688"W	0.49	
11323.00	90.180	359.920	6963.52	4283.96	4183.17	935.28	40°08'38.414"N	104°38'10.686"W	0.70	
11418.00	90.830	359.970	6962.68	4377.31	4278.17	935.19	40°08'39.353"N	104°38'10.687"W	0.69	



# Actual Wellpath Report

WEICHEL 35N-11HZR AWP

Page 5 of 7



## REFERENCE WELLPATH IDENTIFICATION

Operator	KERR-MCGEE OIL & GAS ONSHORE LP	Slot	SLOT#41 WEICHEL 35N-11HZR (420'FSL & 275'FWL, SEC.14)
Area	COLORADO	Well	WEICHEL 35N-11HZR
Field	WELD COUNTY (KERR MCGEE)	Wellbore	WEICHEL 35N-11HZR AWB
Facility	SEC.14-T2N-R65W		

## WELLPATH DATA (142 stations)

MD [ft]	Inclination [°]	Azimuth [°]	TVD [ft]	Vert Sect [ft]	North [ft]	East [ft]	Latitude	Longitude	DLS [°/100ft]	Comments
11512.00	88.270	359.050	6963.42	4469.52	4372.15	934.38	40°08'40.282"N	104°38'10.697"W	2.89	
11607.00	86.570	359.440	6967.70	4562.55	4467.04	933.13	40°08'41.220"N	104°38'10.713"W	1.84	
11702.00	86.760	359.700	6973.22	4655.62	4561.88	932.42	40°08'42.157"N	104°38'10.722"W	0.34	
11797.00	86.810	359.840	6978.55	4748.76	4656.73	932.04	40°08'43.094"N	104°38'10.727"W	0.16	
11892.00	87.010	359.560	6983.67	4841.90	4751.59	931.54	40°08'44.031"N	104°38'10.734"W	0.36	
12004.00	87.220	357.440	6989.31	4951.24	4863.40	928.61	40°08'45.136"N	104°38'10.771"W	1.90	Last BHI MWD+IFR Survey
12064.00	87.220	357.440	6992.22	5009.59	4923.27	925.94	40°08'45.728"N	104°38'10.806"W	0.00	Projection to Bit

## HOLE & CASING SECTIONS - Ref Wellbore: WEICHEL 35N-11HZR AWB Ref Wellpath: WEICHEL 35N-11HZR AWP

String/Diameter	Start MD [ft]	End MD [ft]	Interval [ft]	Start TVD [ft]	End TVD [ft]	Start N/S [ft]	Start E/W [ft]	End N/S [ft]	End E/W [ft]
13.5in Open Hole	13.00	933.00	920.00	13.00	932.97	0.00	0.00	0.73	1.21
9.625in Casing Surface	13.00	933.00	920.00	13.00	932.97	0.00	0.00	0.73	1.21
8.75in Open Hole	933.00	7360.00	6427.00	932.97	6926.47	0.73	1.21	221.40	924.33
7in Casing Intermediate	13.00	7350.00	7337.00	13.00	6926.40	0.00	0.00	211.40	924.17
6.125in Open Hole	7350.00	12064.00	4714.00	6926.40	6992.22	211.40	924.17	4923.27	925.94



# Actual Wellpath Report

WEICHEL 35N-11HZR AWP

Page 6 of 7



## REFERENCE WELLPATH IDENTIFICATION

Operator	KERR-MCGEE OIL & GAS ONSHORE LP	Slot	SLOT#41 WEICHEL 35N-11HZR (420'FSL & 275'FWL, SEC.14)
Area	COLORADO	Well	WEICHEL 35N-11HZR
Field	WELD COUNTY (KERR MCGEE)	Wellbore	WEICHEL 35N-11HZR AWB
Facility	SEC.14-T2N-R65W		

## TARGETS

Name	MD [ft]	TVD [ft]	North [ft]	East [ft]	Grid East [US ft]	Grid North [US ft]	Latitude	Longitude	Shape
WEICHEL 3 PAD SECTION 11 LINES		11.00	65.96	4623.23	3245181.02	1292398.97	40°07'57.724"N	104°37'23.207"W	polygon
WEICHEL 3 PAD SECTION 14 LINES		11.00	65.96	4623.23	3245181.02	1292398.97	40°07'57.724"N	104°37'23.207"W	polygon
WEICHEL 35N-11HZR BHL ON PLAT (460'FSL & 1185'FWL, SEC.11) REV-1		6926.00	5333.31	938.47	3241445.49	1297630.09	40°08'49.780"N	104°38'10.644"W	point
WEICHEL 35N-11HZR BHL ON PLAT (50'FSL & 1185'FWL, SEC.11) REV-2		6926.00	4923.31	938.47	3241449.47	1297220.13	40°08'45.728"N	104°38'10.644"W	point
WEICHEL 13-14HZ PAD SEC. 11 HARDLINES (460' SETBACKS)		7500.00	-43.72	40.00	3240599.27	1292244.84	40°07'56.644"N	104°38'22.214"W	polygon
WEICHEL 13-14HZ PAD SEC. 14 HARDLINES (460' SETBACKS)		7501.00	-21.15	20.12	3240579.17	1292267.21	40°07'56.867"N	104°38'22.470"W	polygon

## WELLPATH COMPOSITION - Ref Wellbore: WEICHEL 35N-11HZR AWB Ref Wellpath: WEICHEL 35N-11HZR AWP

Start MD [ft]	End MD [ft]	Positional Uncertainty Model	Log Name/Comment	Wellbore
13.00	868.00	Generic gyro - continuous (Standard)	GYRODATA SURVEYS <113-868>	WEICHEL 35N-11HZR AWB
868.00	7305.00	NaviTrak (MAGCORR,IFR)	BHI MWD+IFR SURVEYS 8 3/4" HOLE <975-7305>	WEICHEL 35N-11HZR AWB
7305.00	12004.00	OnTrak (MAGCORR,IFR)	BHI MWD+IFR SURVEYS 6 1/8" HOLE <7371-12004>	WEICHEL 35N-11HZR AWB
12004.00	12064.00	Blind Drilling (std)	Projection to bit	WEICHEL 35N-11HZR AWB



# Actual Wellpath Report

WEICHEL 35N-11HZR AWP

Page 7 of 7



## REFERENCE WELLPATH IDENTIFICATION

Operator	KERR-MCGEE OIL & GAS ONSHORE LP	Slot	SLOT#41 WEICHEL 35N-11HZR (420'FSL & 275'FWL, SEC.14)
Area	COLORADO	Well	WEICHEL 35N-11HZR
Field	WELD COUNTY (KERR MCGEE)	Wellbore	WEICHEL 35N-11HZR AWB
Facility	SEC.14-T2N-R65W		

## WELLPATH COMMENTS

MD [ft]	Inclination [°]	Azimuth [°]	TVD [ft]	Comment
13.00	0.000	239.070	13.00	Tie-On
113.00	0.340	239.070	113.00	Begin GYRO Surveys
868.00	0.500	44.020	867.98	Tie-Into GYRO Surveys
975.00	0.280	44.290	974.97	Begin BHI MWD+IFR Surveys
7350.00	89.253	0.936	6926.40	7" Casing Point
12004.00	87.220	357.440	6989.31	Last BHI MWD+IFR Survey
12064.00	87.220	357.440	6992.22	Projection to Bit