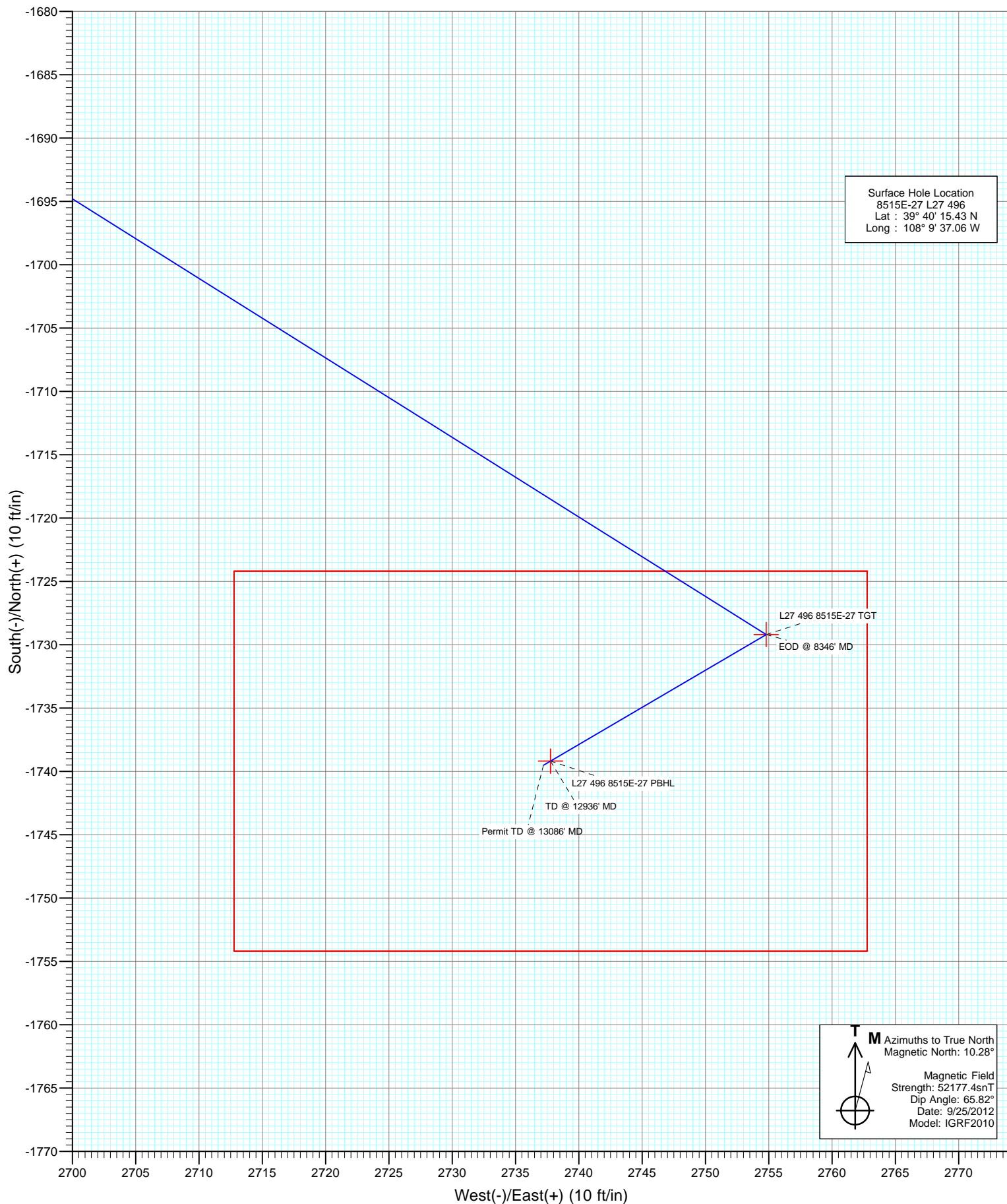




Project: Story Gulch
Site: S27-T4S-R96W (L27 496)
Well: 8515E-27 L27 496
Wellbore: DD
Design: Plan #1



Cathedral Energy Services

Planning Report

Database:	USA EDM 5000 Multi Users DB	Local Co-ordinate Reference:	Well 8515E-27 L27 496
Company:	EnCana Oil & Gas (USA) Inc	TVD Reference:	WELL @ 8136.0ft (Original Well Elev)
Project:	Story Gulch	MD Reference:	WELL @ 8136.0ft (Original Well Elev)
Site:	S27-T4S-R96W (L27 496)	North Reference:	True
Well:	8515E-27 L27 496	Survey Calculation Method:	Minimum Curvature
Wellbore:	DD		
Design:	Plan #1		

Project	Story Gulch		
Map System:	US State Plane 1983	System Datum:	Mean Sea Level
Geo Datum:	North American Datum 1983		
Map Zone:	Colorado Central Zone		

Site		S27-T4S-R96W (L27 496)			
Site Position:		Northing:	1,680,404.44 ft	Latitude:	39° 40' 17.06 N
From:	Lat/Long	Easting:	2,251,282.88 ft	Longitude:	108° 9' 36.59 W
Position Uncertainty:	0.0 ft	Slot Radius:	13.200 in	Grid Convergence:	-1.68 °

Well	8515E-27 L27 496					
Well Position	+N/-S	0.0 ft	Northing:	1,680,240.64 ft	Latitude:	39° 40' 15.43 N
	+E/-W	0.0 ft	Easting:	2,251,241.31 ft	Longitude:	108° 9' 37.06 W
Position Uncertainty		0.0 ft	Wellhead Elevation:	ft	Ground Level:	8,104.0 ft

Wellbore	DD				
Magnetics	Model Name	Sample Date	Declination (°)	Dip Angle (°)	Field Strength (nT)
	IGRF2010	9/25/2012	10.28	65.82	52,177

Design	Plan #1				
Audit Notes:					
Version:	Phase:	PLAN		Tie On Depth:	0.0
Vertical Section:	Depth From (TVD) (ft)	+N/-S (ft)	+E/-W (ft)	Direction (°)	
	0.0	0.0	0.0	122.43	

Plan Sections										
Measured Depth (ft)	Inclination (°)	Azimuth (°)	Vertical Depth (ft)	+N/-S (ft)	+E/-W (ft)	Dogleg Rate (°/100ft)	Build Rate (°/100ft)	Turn Rate (°/100ft)	TFO (°)	Target
0.0	0.00	0.00	0.0	0.0	0.0	0.00	0.00	0.00	0.00	
200.0	0.00	0.00	200.0	0.0	0.0	0.00	0.00	0.00	0.00	
1,084.9	26.55	122.12	1,053.6	-107.1	170.6	3.00	3.00	0.00	122.12	
7,461.0	26.55	122.12	6,757.4	-1,622.1	2,584.2	0.00	0.00	0.00	0.00	
8,346.0	0.00	0.00	7,611.0	-1,729.2	2,754.8	3.00	-3.00	0.00	180.00	L27 496 8515E-27 TC
8,445.6	0.25	239.62	7,710.7	-1,729.3	2,754.6	0.25	0.25	-120.80	239.62	
12,936.0	0.25	239.62	12,201.0	-1,739.2	2,737.8	0.00	0.00	0.00	0.00	L27 496 8515E-27 PE
13,086.0	0.25	239.62	12,351.0	-1,739.5	2,737.2	0.00	0.00	0.00	0.00	

Cathedral Energy Services

Planning Report

Database:	USA EDM 5000 Multi Users DB	Local Co-ordinate Reference:	Well 8515E-27 L27 496
Company:	EnCana Oil & Gas (USA) Inc	TVD Reference:	WELL @ 8136.0ft (Original Well Elev)
Project:	Story Gulch	MD Reference:	WELL @ 8136.0ft (Original Well Elev)
Site:	S27-T4S-R96W (L27 496)	North Reference:	True
Well:	8515E-27 L27 496	Survey Calculation Method:	Minimum Curvature
Wellbore:	DD		
Design:	Plan #1		

Planned Survey

Measured Depth (ft)	Inclination (°)	Azimuth (°)	Vertical Depth (ft)	+N/-S (ft)	+E/-W (ft)	Vertical Section (ft)	Dogleg Rate (°/100ft)	Build Rate (°/100ft)	Comments / Formations
0.0	0.00	0.00	0.0	0.0	0.0	0.0	0.00	0.00	
100.0	0.00	0.00	100.0	0.0	0.0	0.0	0.00	0.00	
200.0	0.00	0.00	200.0	0.0	0.0	0.0	0.00	0.00	KOP @ 200' MD
300.0	3.00	122.12	300.0	-1.4	2.2	2.6	3.00	3.00	
400.0	6.00	122.12	399.6	-5.6	8.9	10.5	3.00	3.00	
500.0	9.00	122.12	498.8	-12.5	19.9	23.5	3.00	3.00	
600.0	12.00	122.12	597.1	-22.2	35.3	41.7	3.00	3.00	
700.0	15.00	122.12	694.3	-34.6	55.1	65.1	3.00	3.00	
800.0	18.00	122.12	790.2	-49.7	79.2	93.5	3.00	3.00	
900.0	21.00	122.12	884.4	-67.4	107.4	126.9	3.00	3.00	
1,000.0	24.00	122.12	976.8	-87.8	139.8	165.1	3.00	3.00	
1,084.9	26.55	122.12	1,053.6	-107.1	170.6	201.4	3.00	3.00	EOB; Inc=26.55°
1,099.9	26.55	122.12	1,067.0	-110.6	176.2	208.1	0.00	0.00	A_GROOVE_TVD
1,100.0	26.55	122.12	1,067.1	-110.6	176.3	208.1	0.00	0.00	
1,200.0	26.55	122.12	1,156.5	-134.4	214.1	252.8	0.00	0.00	
1,267.6	26.55	122.12	1,217.0	-150.5	239.7	283.0	0.00	0.00	B_GROOVE_TVD
1,283.2	26.55	122.12	1,231.0	-154.2	245.6	290.0	0.00	0.00	B_GROOVE_BASE_TVD
1,300.0	26.55	122.12	1,246.0	-158.2	252.0	297.5	0.00	0.00	
1,400.0	26.55	122.12	1,335.5	-181.9	289.8	342.2	0.00	0.00	
1,500.0	26.55	122.12	1,424.9	-205.7	327.7	386.9	0.00	0.00	
1,600.0	26.55	122.12	1,514.4	-229.4	365.5	431.6	0.00	0.00	
1,700.0	26.55	122.12	1,603.8	-253.2	403.4	476.3	0.00	0.00	
1,800.0	26.55	122.12	1,693.3	-277.0	441.2	521.0	0.00	0.00	
1,900.0	26.55	122.12	1,782.7	-300.7	479.1	565.7	0.00	0.00	
2,000.0	26.55	122.12	1,872.2	-324.5	517.0	610.4	0.00	0.00	
2,100.0	26.55	122.12	1,961.6	-348.3	554.8	655.1	0.00	0.00	
2,200.0	26.55	122.12	2,051.1	-372.0	592.7	699.7	0.00	0.00	
2,300.0	26.55	122.12	2,140.6	-395.8	630.5	744.4	0.00	0.00	
2,350.8	26.55	122.12	2,186.0	-407.9	649.8	767.1	0.00	0.00	GARDEN_GULCH_TVD.
2,400.0	26.55	122.12	2,230.0	-419.5	668.4	789.1	0.00	0.00	
2,500.0	26.55	122.12	2,319.5	-443.3	706.2	833.8	0.00	0.00	
2,600.0	26.55	122.12	2,408.9	-467.1	744.1	878.5	0.00	0.00	
2,700.0	26.55	122.12	2,498.4	-490.8	781.9	923.2	0.00	0.00	
2,800.0	26.55	122.12	2,587.8	-514.6	819.8	967.9	0.00	0.00	
2,900.0	26.55	122.12	2,677.3	-538.4	857.7	1,012.6	0.00	0.00	
3,000.0	26.55	122.12	2,766.7	-562.1	895.5	1,057.3	0.00	0.00	
3,100.0	26.55	122.12	2,856.2	-585.9	933.4	1,102.0	0.00	0.00	
3,200.0	26.55	122.12	2,945.7	-609.6	971.2	1,146.7	0.00	0.00	
3,300.0	26.55	122.12	3,035.1	-633.4	1,009.1	1,191.4	0.00	0.00	
3,400.0	26.55	122.12	3,124.6	-657.2	1,046.9	1,236.1	0.00	0.00	
3,479.8	26.55	122.12	3,196.0	-676.1	1,077.2	1,271.8	0.00	0.00	WASATCH_FM_TVD
3,500.0	26.55	122.12	3,214.0	-680.9	1,084.8	1,280.8	0.00	0.00	
3,600.0	26.55	122.12	3,303.5	-704.7	1,122.6	1,325.5	0.00	0.00	
3,700.0	26.55	122.12	3,392.9	-728.4	1,160.5	1,370.2	0.00	0.00	
3,800.0	26.55	122.12	3,482.4	-752.2	1,198.4	1,414.9	0.00	0.00	
3,900.0	26.55	122.12	3,571.8	-776.0	1,236.2	1,459.5	0.00	0.00	
4,000.0	26.55	122.12	3,661.3	-799.7	1,274.1	1,504.2	0.00	0.00	
4,100.0	26.55	122.12	3,750.8	-823.5	1,311.9	1,548.9	0.00	0.00	
4,200.0	26.55	122.12	3,840.2	-847.3	1,349.8	1,593.6	0.00	0.00	
4,300.0	26.55	122.12	3,929.7	-871.0	1,387.6	1,638.3	0.00	0.00	
4,400.0	26.55	122.12	4,019.1	-894.8	1,425.5	1,683.0	0.00	0.00	
4,500.0	26.55	122.12	4,108.6	-918.5	1,463.3	1,727.7	0.00	0.00	

Cathedral Energy Services

Planning Report

Database:	USA EDM 5000 Multi Users DB	Local Co-ordinate Reference:	Well 8515E-27 L27 496
Company:	EnCana Oil & Gas (USA) Inc	TVD Reference:	WELL @ 8136.0ft (Original Well Elev)
Project:	Story Gulch	MD Reference:	WELL @ 8136.0ft (Original Well Elev)
Site:	S27-T4S-R96W (L27 496)	North Reference:	True
Well:	8515E-27 L27 496	Survey Calculation Method:	Minimum Curvature
Wellbore:	DD		
Design:	Plan #1		

Planned Survey

Measured Depth (ft)	Inclination (°)	Azimuth (°)	Vertical Depth (ft)	+N/-S (ft)	+E/-W (ft)	Vertical Section (ft)	Dogleg Rate (°/100ft)	Build Rate (°/100ft)	Comments / Formations
4,600.0	26.55	122.12	4,198.0	-942.3	1,501.2	1,772.4	0.00	0.00	
4,700.0	26.55	122.12	4,287.5	-966.1	1,539.1	1,817.1	0.00	0.00	
4,800.0	26.55	122.12	4,377.0	-989.8	1,576.9	1,861.8	0.00	0.00	
4,900.0	26.55	122.12	4,466.4	-1,013.6	1,614.8	1,906.5	0.00	0.00	
5,000.0	26.55	122.12	4,555.9	-1,037.4	1,652.6	1,951.2	0.00	0.00	
5,100.0	26.55	122.12	4,645.3	-1,061.1	1,690.5	1,995.9	0.00	0.00	
5,200.0	26.55	122.12	4,734.8	-1,084.9	1,728.3	2,040.6	0.00	0.00	
5,300.0	26.55	122.12	4,824.2	-1,108.6	1,766.2	2,085.3	0.00	0.00	
5,400.0	26.55	122.12	4,913.7	-1,132.4	1,804.0	2,130.0	0.00	0.00	
5,500.0	26.55	122.12	5,003.1	-1,156.2	1,841.9	2,174.7	0.00	0.00	
5,600.0	26.55	122.12	5,092.6	-1,179.9	1,879.7	2,219.4	0.00	0.00	
5,700.0	26.55	122.12	5,182.1	-1,203.7	1,917.6	2,264.0	0.00	0.00	
5,800.0	26.55	122.12	5,271.5	-1,227.4	1,955.5	2,308.7	0.00	0.00	
5,900.0	26.55	122.12	5,361.0	-1,251.2	1,993.3	2,353.4	0.00	0.00	
5,960.4	26.55	122.12	5,415.0	-1,265.6	2,016.2	2,380.4	0.00	0.00	WASATCH_G_TVD
6,000.0	26.55	122.12	5,450.4	-1,275.0	2,031.2	2,398.1	0.00	0.00	
6,100.0	26.55	122.12	5,539.9	-1,298.7	2,069.0	2,442.8	0.00	0.00	
6,200.0	26.55	122.12	5,629.3	-1,322.5	2,106.9	2,487.5	0.00	0.00	
6,300.0	26.55	122.12	5,718.8	-1,346.3	2,144.7	2,532.2	0.00	0.00	
6,400.0	26.55	122.12	5,808.2	-1,370.0	2,182.6	2,576.9	0.00	0.00	
6,500.0	26.55	122.12	5,897.7	-1,393.8	2,220.4	2,621.6	0.00	0.00	
6,600.0	26.55	122.12	5,987.2	-1,417.5	2,258.3	2,666.3	0.00	0.00	
6,700.0	26.55	122.12	6,076.6	-1,441.3	2,296.2	2,711.0	0.00	0.00	
6,800.0	26.55	122.12	6,166.1	-1,465.1	2,334.0	2,755.7	0.00	0.00	
6,900.0	26.55	122.12	6,255.5	-1,488.8	2,371.9	2,800.4	0.00	0.00	
7,000.0	26.55	122.12	6,345.0	-1,512.6	2,409.7	2,845.1	0.00	0.00	
7,100.0	26.55	122.12	6,434.4	-1,536.4	2,447.6	2,889.8	0.00	0.00	
7,200.0	26.55	122.12	6,523.9	-1,560.1	2,485.4	2,934.5	0.00	0.00	
7,300.0	26.55	122.12	6,613.3	-1,583.9	2,523.3	2,979.2	0.00	0.00	
7,400.0	26.55	122.12	6,702.8	-1,607.6	2,561.1	3,023.9	0.00	0.00	
7,461.0	26.55	122.12	6,757.4	-1,622.1	2,584.2	3,051.1	0.00	0.00	Start 3° Drop @ 7461' MD
7,500.0	25.38	122.12	6,792.4	-1,631.2	2,598.7	3,068.2	3.00	-3.00	
7,600.0	22.38	122.12	6,883.9	-1,652.7	2,633.0	3,108.7	3.00	-3.00	
7,700.0	19.38	122.12	6,977.3	-1,671.7	2,663.2	3,144.3	3.00	-3.00	
7,800.0	16.38	122.12	7,072.4	-1,688.0	2,689.2	3,175.0	3.00	-3.00	
7,900.0	13.38	122.12	7,169.1	-1,701.6	2,710.9	3,200.7	3.00	-3.00	
8,000.0	10.38	122.12	7,266.9	-1,712.6	2,728.3	3,221.3	3.00	-3.00	
8,100.0	7.38	122.12	7,365.7	-1,720.8	2,741.4	3,236.7	3.00	-3.00	
8,200.0	4.38	122.12	7,465.2	-1,726.2	2,750.1	3,246.9	3.00	-3.00	
8,300.0	1.38	122.12	7,565.0	-1,728.9	2,754.3	3,251.9	3.00	-3.00	
8,306.0	1.20	122.12	7,571.0	-1,729.0	2,754.4	3,252.1	3.00	-3.00	WILLIAMS_FORK_TVD
8,346.0	0.00	0.00	7,611.0	-1,729.2	2,754.8	3,252.5	3.00	-3.00	EOD @ 8346' MD - TOG TVD
8,400.0	0.14	239.62	7,665.0	-1,729.2	2,754.7	3,252.5	0.25	0.25	
8,445.6	0.25	239.62	7,710.7	-1,729.3	2,754.6	3,252.4	0.25	0.25	
8,500.0	0.25	239.62	7,765.0	-1,729.4	2,754.4	3,252.3	0.00	0.00	
8,600.0	0.25	239.62	7,865.0	-1,729.6	2,754.0	3,252.1	0.00	0.00	
8,700.0	0.25	239.62	7,965.0	-1,729.9	2,753.7	3,251.9	0.00	0.00	
8,800.0	0.25	239.62	8,065.0	-1,730.1	2,753.3	3,251.7	0.00	0.00	
8,900.0	0.25	239.62	8,165.0	-1,730.3	2,752.9	3,251.5	0.00	0.00	
9,000.0	0.25	239.62	8,265.0	-1,730.5	2,752.5	3,251.3	0.00	0.00	
9,100.0	0.25	239.62	8,365.0	-1,730.7	2,752.2	3,251.1	0.00	0.00	
9,200.0	0.25	239.62	8,465.0	-1,731.0	2,751.8	3,250.9	0.00	0.00	

Cathedral Energy Services

Planning Report

Database:	USA EDM 5000 Multi Users DB	Local Co-ordinate Reference:	Well 8515E-27 L27 496
Company:	EnCana Oil & Gas (USA) Inc	TVD Reference:	WELL @ 8136.0ft (Original Well Elev)
Project:	Story Gulch	MD Reference:	WELL @ 8136.0ft (Original Well Elev)
Site:	S27-T4S-R96W (L27 496)	North Reference:	True
Well:	8515E-27 L27 496	Survey Calculation Method:	Minimum Curvature
Wellbore:	DD		
Design:	Plan #1		

Planned Survey									
Measured Depth (ft)	Inclination (°)	Azimuth (°)	Vertical Depth (ft)	+N/-S (ft)	+E/-W (ft)	Vertical Section (ft)	Dogleg Rate (°/100ft)	Build Rate (°/100ft)	Comments / Formations
9,300.0	0.25	239.62	8,565.0	-1,731.2	2,751.4	3,250.7	0.00	0.00	
9,400.0	0.25	239.62	8,665.0	-1,731.4	2,751.0	3,250.5	0.00	0.00	
9,500.0	0.25	239.62	8,765.0	-1,731.6	2,750.7	3,250.3	0.00	0.00	
9,600.0	0.25	239.62	8,865.0	-1,731.8	2,750.3	3,250.1	0.00	0.00	
9,700.0	0.25	239.62	8,965.0	-1,732.1	2,749.9	3,249.9	0.00	0.00	
9,800.0	0.25	239.62	9,065.0	-1,732.3	2,749.5	3,249.7	0.00	0.00	
9,900.0	0.25	239.62	9,165.0	-1,732.5	2,749.2	3,249.5	0.00	0.00	
10,000.0	0.25	239.62	9,265.0	-1,732.7	2,748.8	3,249.3	0.00	0.00	
10,100.0	0.25	239.62	9,365.0	-1,732.9	2,748.4	3,249.1	0.00	0.00	
10,200.0	0.25	239.62	9,465.0	-1,733.2	2,748.0	3,248.9	0.00	0.00	
10,300.0	0.25	239.62	9,565.0	-1,733.4	2,747.7	3,248.7	0.00	0.00	
10,400.0	0.25	239.62	9,665.0	-1,733.6	2,747.3	3,248.5	0.00	0.00	
10,500.0	0.25	239.62	9,765.0	-1,733.8	2,746.9	3,248.3	0.00	0.00	
10,600.0	0.25	239.62	9,865.0	-1,734.0	2,746.5	3,248.1	0.00	0.00	
10,700.0	0.25	239.62	9,965.0	-1,734.3	2,746.2	3,247.9	0.00	0.00	
10,800.0	0.25	239.62	10,065.0	-1,734.5	2,745.8	3,247.7	0.00	0.00	
10,900.0	0.25	239.62	10,165.0	-1,734.7	2,745.4	3,247.5	0.00	0.00	
11,000.0	0.25	239.62	10,265.0	-1,734.9	2,745.0	3,247.3	0.00	0.00	
11,100.0	0.25	239.62	10,365.0	-1,735.1	2,744.7	3,247.1	0.00	0.00	
11,200.0	0.25	239.62	10,465.0	-1,735.4	2,744.3	3,246.9	0.00	0.00	
11,300.0	0.25	239.62	10,565.0	-1,735.6	2,743.9	3,246.7	0.00	0.00	
11,400.0	0.25	239.62	10,665.0	-1,735.8	2,743.5	3,246.5	0.00	0.00	
11,500.0	0.25	239.62	10,765.0	-1,736.0	2,743.2	3,246.3	0.00	0.00	
11,600.0	0.25	239.62	10,865.0	-1,736.2	2,742.8	3,246.1	0.00	0.00	
11,700.0	0.25	239.62	10,965.0	-1,736.5	2,742.4	3,245.9	0.00	0.00	
11,741.0	0.25	239.62	11,006.0	-1,736.6	2,742.3	3,245.9	0.00	0.00	CAMEO_TVD
11,800.0	0.25	239.62	11,065.0	-1,736.7	2,742.0	3,245.7	0.00	0.00	
11,900.0	0.25	239.62	11,165.0	-1,736.9	2,741.7	3,245.5	0.00	0.00	
12,000.0	0.25	239.62	11,265.0	-1,737.1	2,741.3	3,245.3	0.00	0.00	
12,073.0	0.25	239.62	11,338.0	-1,737.3	2,741.0	3,245.2	0.00	0.00	ROLLINS_TVD
12,100.0	0.25	239.62	11,365.0	-1,737.3	2,740.9	3,245.1	0.00	0.00	
12,200.0	0.25	239.62	11,465.0	-1,737.6	2,740.5	3,244.9	0.00	0.00	
12,300.0	0.25	239.62	11,565.0	-1,737.8	2,740.2	3,244.7	0.00	0.00	
12,307.0	0.25	239.62	11,572.0	-1,737.8	2,740.1	3,244.7	0.00	0.00	COZZETTE_TVD
12,400.0	0.25	239.62	11,665.0	-1,738.0	2,739.8	3,244.5	0.00	0.00	
12,495.0	0.25	239.62	11,760.0	-1,738.2	2,739.4	3,244.4	0.00	0.00	CORCORAN_TVD
12,500.0	0.25	239.62	11,765.0	-1,738.2	2,739.4	3,244.3	0.00	0.00	
12,600.0	0.25	239.62	11,865.0	-1,738.4	2,739.0	3,244.1	0.00	0.00	
12,700.0	0.25	239.62	11,965.0	-1,738.7	2,738.7	3,243.9	0.00	0.00	
12,786.0	0.25	239.62	12,051.0	-1,738.9	2,738.3	3,243.8	0.00	0.00	UPPER_SEGO_TVD
12,800.0	0.25	239.62	12,065.0	-1,738.9	2,738.3	3,243.7	0.00	0.00	
12,900.0	0.25	239.62	12,165.0	-1,739.1	2,737.9	3,243.5	0.00	0.00	
12,936.0	0.25	239.62	12,201.0	-1,739.2	2,737.8	3,243.5	0.00	0.00	TD @ 12936' MD - SEGO_BASE_TARGET_TV
13,000.0	0.25	239.62	12,265.0	-1,739.3	2,737.5	3,243.3	0.00	0.00	
13,086.0	0.25	239.62	12,351.0	-1,739.5	2,737.2	3,243.2	0.00	0.00	Permit TD @ 13086' MD

Cathedral Energy Services

Planning Report

Database:	USA EDM 5000 Multi Users DB	Local Co-ordinate Reference:	Well 8515E-27 L27 496
Company:	EnCana Oil & Gas (USA) Inc	TVD Reference:	WELL @ 8136.0ft (Original Well Elev)
Project:	Story Gulch	MD Reference:	WELL @ 8136.0ft (Original Well Elev)
Site:	S27-T4S-R96W (L27 496)	North Reference:	True
Well:	8515E-27 L27 496	Survey Calculation Method:	Minimum Curvature
Wellbore:	DD		
Design:	Plan #1		

Targets									
Target Name									
- hit/miss target	Dip Angle	Dip Dir.	TVD	+N/-S	+E/-W	Northing	Easting	Latitude	Longitude
- Shape	(°)	(°)	(ft)	(ft)	(ft)	(ft)	(ft)		
L27 496 8515E-27 PBHI	0.00	0.00	12,201.0	-1,739.2	2,737.8	1,678,422.04	2,253,926.99	39° 39' 58.24 N	108° 9' 2.05 W
- plan hits target center									
- Rectangle (sides W30.0 H50.0 D0.0)									
L27 496 8515E-27 TGT	0.00	0.00	7,611.0	-1,729.2	2,754.8	1,678,431.52	2,253,944.30	39° 39' 58.34 N	108° 9' 1.83 W
- plan hits target center									
- Point									

Formations						
Measured Depth	Vertical Depth	Name	Lithology	Dip	Dip Direction	
(ft)	(ft)			(°)	(°)	
1,099.9	1,067.0	A_GROOVE_TVD				
1,267.6	1,217.0	B_GROOVE_TVD				
1,283.2	1,231.0	B_GROOVE_BASE_TVD				
2,350.8	2,186.0	GARDEN_GULCH_TVD.				
3,479.8	3,196.0	WASATCH_FM_TVD				
5,960.4	5,415.0	WASATCH_G_TVD				
8,306.0	7,571.0	WILLIAMS_FORK_TVD				
8,346.0	7,611.0	TOG TVD				
11,741.0	11,006.0	CAMEO_TVD				
12,073.0	11,338.0	ROLLINS_TVD				
12,307.0	11,572.0	COZZETTE_TVD				
12,495.0	11,760.0	CORCORAN_TVD				
12,786.0	12,051.0	UPPER_SEGO_TVD				
12,936.0	12,201.0	SEGO_BASE_TARGET_TVD				

Plan Annotations				
Measured Depth	Vertical Depth	Local Coordinates		Comment
(ft)	(ft)	+N/-S (ft)	+E/-W (ft)	
200.0	200.0	0.0	0.0	KOP @ 200' MD
1,084.9	1,053.6	-107.1	170.6	EOB; Inc=26.55°
7,461.0	6,757.4	-1,622.1	2,584.2	Start 3° Drop @ 7461' MD
8,346.0	7,611.0	-1,729.2	2,754.8	EOD @ 8346' MD
12,936.0	12,201.0	-1,729.3	2,754.6	TD @ 12936' MD
13,086.0	12,351.0	-1,739.2	2,737.8	Permit TD @ 13086' MD