



January 8, 2013

Department of Natural Resources  
Oil and Gas Conservation Commission  
The Chancery Building  
1120 Lincoln St., Suite 801  
Denver, CO 80203

Re: **30 Day Certification Letter - 318A-e**  
HOWARD 3N-21HZ  
Township 1 North, Range 67 West, Section 21: SE/4SW/4  
Unit Spacing: 01N-67W- 21 E/2W/2  
Weld County, Colorado

Ladies/Gentlemen:

Kerr McGee Oil and Gas Onshore LP ("KMG") hereby certify to the Director that KMG owns one-hundred percent (100%) of the mineral rights in the proposed spacing unit. Therefore, KMG respectfully requests the Director to approve the boundary well.

If you have any questions or issues regarding this permit, please contact Cheryl Light at (720) 929-6461.

Very truly yours,

**Kerr-McGee Oil and Gas Onshore LP**

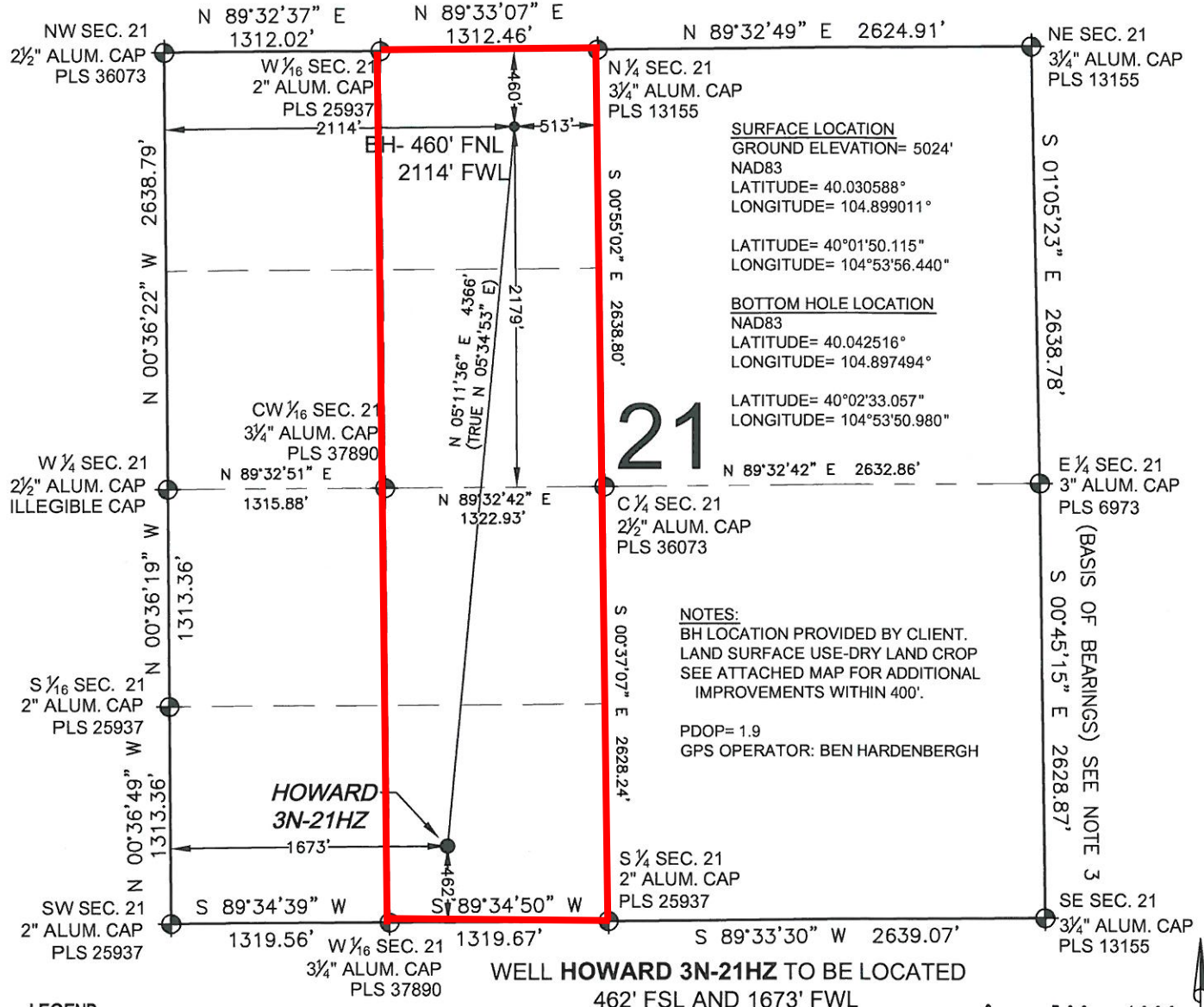
A handwritten signature in cursive script that reads 'Rebecca Heim'.

**Rebecca Heim**  
**Regulatory Analyst II**

# PROPOSED SPACING UNIT

## WELL LOCATION CERTIFICATE: HOWARD 3N-21HZ

SECTION 21, TOWNSHIP 1 NORTH, RANGE 67 WEST, 6TH P.M.



**SURFACE LOCATION**  
GROUND ELEVATION= 5024'  
NAD83  
LATITUDE= 40.030588°  
LONGITUDE= 104.899011°

LATITUDE= 40°01'50.115"  
LONGITUDE= 104°53'56.440"

**BOTTOM HOLE LOCATION**  
NAD83  
LATITUDE= 40.042516°  
LONGITUDE= 104.897494°

LATITUDE= 40°02'33.057"  
LONGITUDE= 104°53'50.980"

**NOTES:**  
BH LOCATION PROVIDED BY CLIENT.  
LAND SURFACE USE-DRY LAND CROP  
SEE ATTACHED MAP FOR ADDITIONAL  
IMPROVEMENTS WITHIN 400'.

PDOP= 1.9  
GPS OPERATOR: BEN HARDENBERGH

**LEGEND**

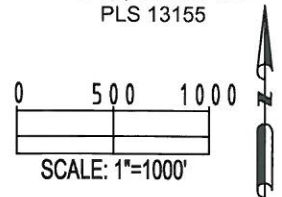
- ⊕ = EXISTING MONUMENT      ⊕ = BOTTOM HOLE
- = PROPOSED WELL         BH = BOTTOM HOLE

**NOTES:**

1. THIS FIELD SURVEY CONFORMS TO THE MINIMUM STANDARDS SET BY THE C.O.G.C.C., RULE NO. 215
2. HORIZONTAL POSITIONS AND ORTHOMETRIC ELEVATIONS SHOWN AT THE WELL HEAD, ARE BASED ON GPS-RTK POSITIONS DERIVED FROM MINIMUM 2-HOUR STATIC OBSERVATIONS CORRECTED BY THE NATIONAL GEODETIC SURVEY ONLINE POSITIONING USER SERVICE, O.P.U.S. DATUM: HORIZONTAL = NAD83/2007, VERTICAL = NAVD88
3. THE BASIS OF BEARINGS ARE STATE PLANE COORDINATE SYSTEM GRID BEARINGS SHOWN HEREON BETWEEN THE DESCRIBED MONUMENTS SHOWN HEREON.
4. GRID DISTANCES ARE SHOWN, AS MEASURED IN THE FIELD, WITH TIES TO WELLS MEASURED PERPENDICULAR TO SECTION LINES.

I, MARK A. HALL, A LICENSED PROFESSIONAL LAND SURVEYOR IN THE STATE OF COLORADO DO HEREBY CERTIFY TO **KERR-MCGEE OIL & GAS ONSHORE LP**, THAT THE SURVEY AND WELL LOCATION CERTIFICATE SHOWN HEREON WERE DONE BY ME OR UNDER MY DIRECT SUPERVISION AND THAT THE DRAWING SHOWN HEREON ACCURATELY DEPICTS THE PROPOSED LOCATION OF THE WELL. THIS CERTIFICATE DOES NOT REPRESENT A LAND SURVEY PLAT OR IMPROVEMENT SURVEY PLAT AS DEFINED BY C.R.S. 38-51-102 AND CANNOT BE RELIED UPON TO DETERMINE OWNERSHIP.

MARK A. HALL, PLS 36073  
COLORADO LICENSED PROFESSIONAL LAND SURVEYOR  
FOR AND ON BEHALF OF P.F.S., LLC



PREPARED BY: Petroleum Field Services, LLC 1801 W. 13th Ave. Denver, CO 80204	FIELD DATE: 11-05-12	SURFACE LOCATION: SE 1/4 SW 1/4, SEC. 21, T1N, R67W, 6TH P.M.
	DRAWING DATE: 11-08-12	BY: SMF      CHECKED: MCH

NOTICE: ACCORDING TO COLORADO LAW YOU MUST COMMENCE ANY LEGAL ACTION BASED UPON ANY DEFECT IN THIS SURVEY WITHIN THREE YEARS AFTER YOU FIRST DISCOVER SUCH DEFECT. IN NO EVENT MAY ANY ACTION BASED UPON ANY DEFECT IN THIS SURVEY BE COMMENCED MORE THAN TEN YEARS FROM THIS SAID DATE OF THIS CERTIFICATION SHOWN HEREON.