

# T4S, R96W, 6th P.M.

Encana OIL & GAS (USA) INC.

1953 Brass Cap  
0.7' High, Mound of  
Stones, Steel Post  
Lat: 39.680564°  
Long: 108.164133°

1953 Brass Cap  
0.5' High  
Lat: 39.680561°  
Long: 108.154725°

1953 Brass Cap  
0.8' High, Steel  
Post  
Lat: 39.680583°  
Long: 108.145383°

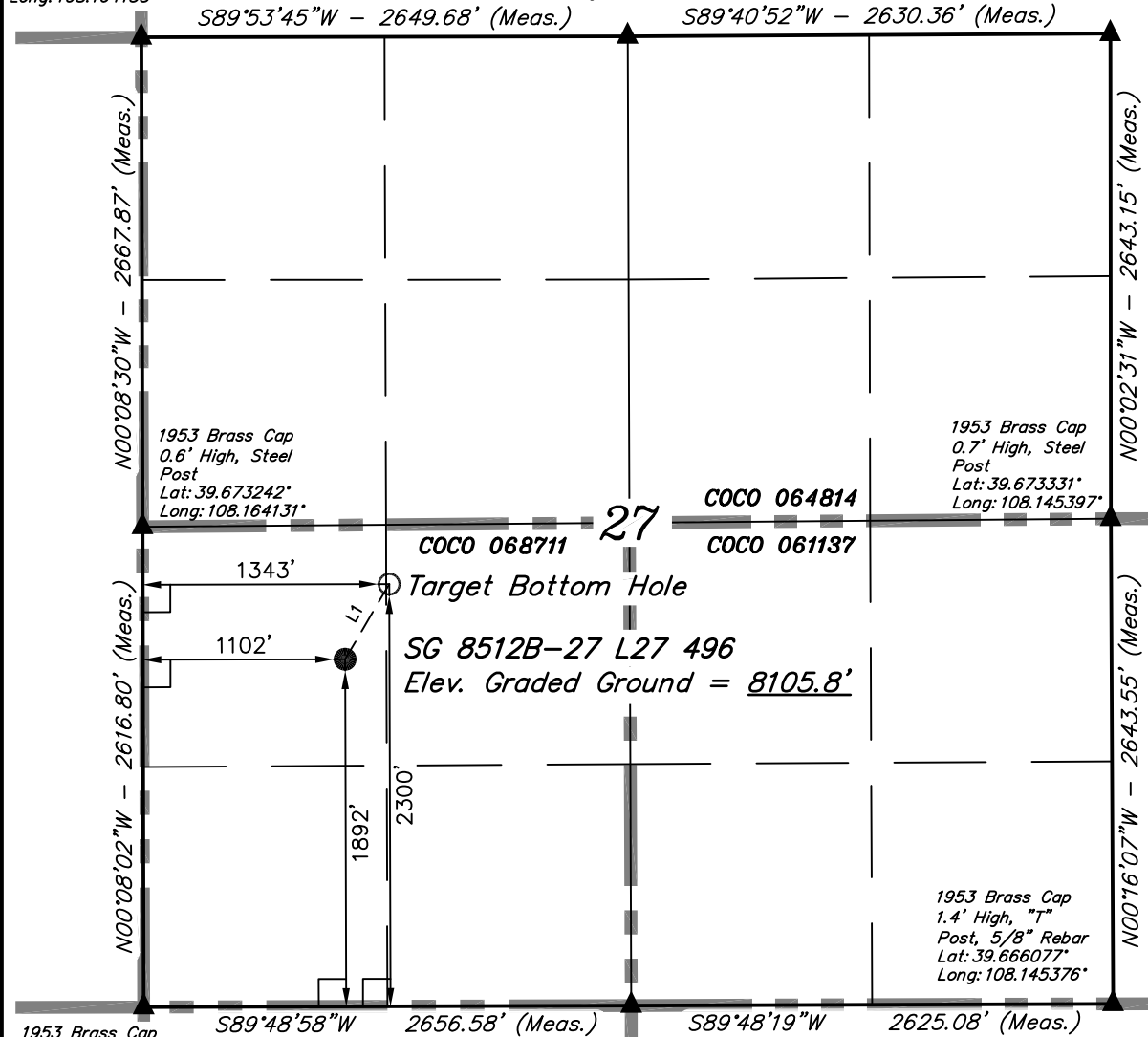
Well location, SG 8512B-27 L27 496, located as shown in the NW 1/4 SW 1/4 of Section 27, T4S, R96W, 6th P.M., Garfield County, Colorado.

## BASIS OF ELEVATION

BENCH MARK (H79) LOCATED IN THE NE 1/4 OF SECTION 35, T4S, R98W, 6th P.M. TAKEN FROM THE BULL FORK QUADRANGLE, COLORADO, 7.5 MINUTE SERIES (TOPO GRAPHICAL MAP) PUBLISHED BY THE UNITED STATES DEPARTMENT OF THE INTERIOR, GEOLOGICAL SURVEY. SAID ELEVATION IS MARKED AS BEING 8535 FEET.

## BASIS OF BEARINGS

BASIS OF BEARINGS IS A G.P.S. OBSERVATION.



LINE TABLE		
LINE	DIRECTION	LENGTH
L1	N30°22'43"E	474.65'



Sheet 1s of 10



SCALE

## CERTIFICATE

THIS IS TO CERTIFY THAT THE ABOVE PLAT WAS PREPARED FROM FIELD NOTES OF ACTUAL SURVEYS MADE BY ME OR UNDER MY SUPERVISION AND THAT THE SAME ARE TRUE AND CORRECT TO THE BEST OF MY KNOWLEDGE AND BELIEF.

REGISTERED LAND SURVEYOR  
REGISTRATION NO. 17493  
STATE OF COLORADO

REVISED: 12-19-12

1953 Brass Cap  
0.9' High, Steel  
Post  
Lat: 39.666061°  
Long: 108.164131°

NOTE:  
SEE SHEET 7A FOR EXISTING  
IMPROVEMENTS WITHIN 400' OF THE  
PROPOSED WELL DISTURBANCE.

1953 Brass Cap  
0.5' High, 5/8"  
Rebar  
Lat: 39.666069°  
Long: 108.154697°

## LEGEND:

- └─┘ = 90° SYMBOL
- = PROPOSED WELL HEAD.
- ▲ = SECTION CORNERS LOCATED.

PDOP = 1.4

NAD 83 (TARGET BOTTOM HOLE)		NAD 83 (SURFACE LOCATION)	
LATITUDE = 39°40'20.56" (39.672378)	LONGITUDE = 108°09'33.70" (108.159361)	LATITUDE = 39°40'16.52" (39.671256)	LONGITUDE = 108°09'36.78" (108.160217)
NAD 27 (TARGET BOTTOM HOLE)		NAD 27 (SURFACE LOCATION)	
LATITUDE = 39°40'20.65" (39.672403)	LONGITUDE = 108°09'31.41" (108.158725)	LATITUDE = 39°40'16.61" (39.671281)	LONGITUDE = 108°09'34.49" (108.159581)

**UINTAH ENGINEERING & LAND SURVEYING**  
85 SOUTH 200 EAST - VERNAL, UTAH 84078  
(435) 789-1017

SCALE 1" = 1000'	DATE SURVEYED: 07-31-12	DATE DRAWN: 09-27-12
PARTY B.B. B.J. M.D.	REFERENCES G.L.O. PLAT	
WEATHER WARM	FILE ENCANA OIL & GAS (USA) INC.	