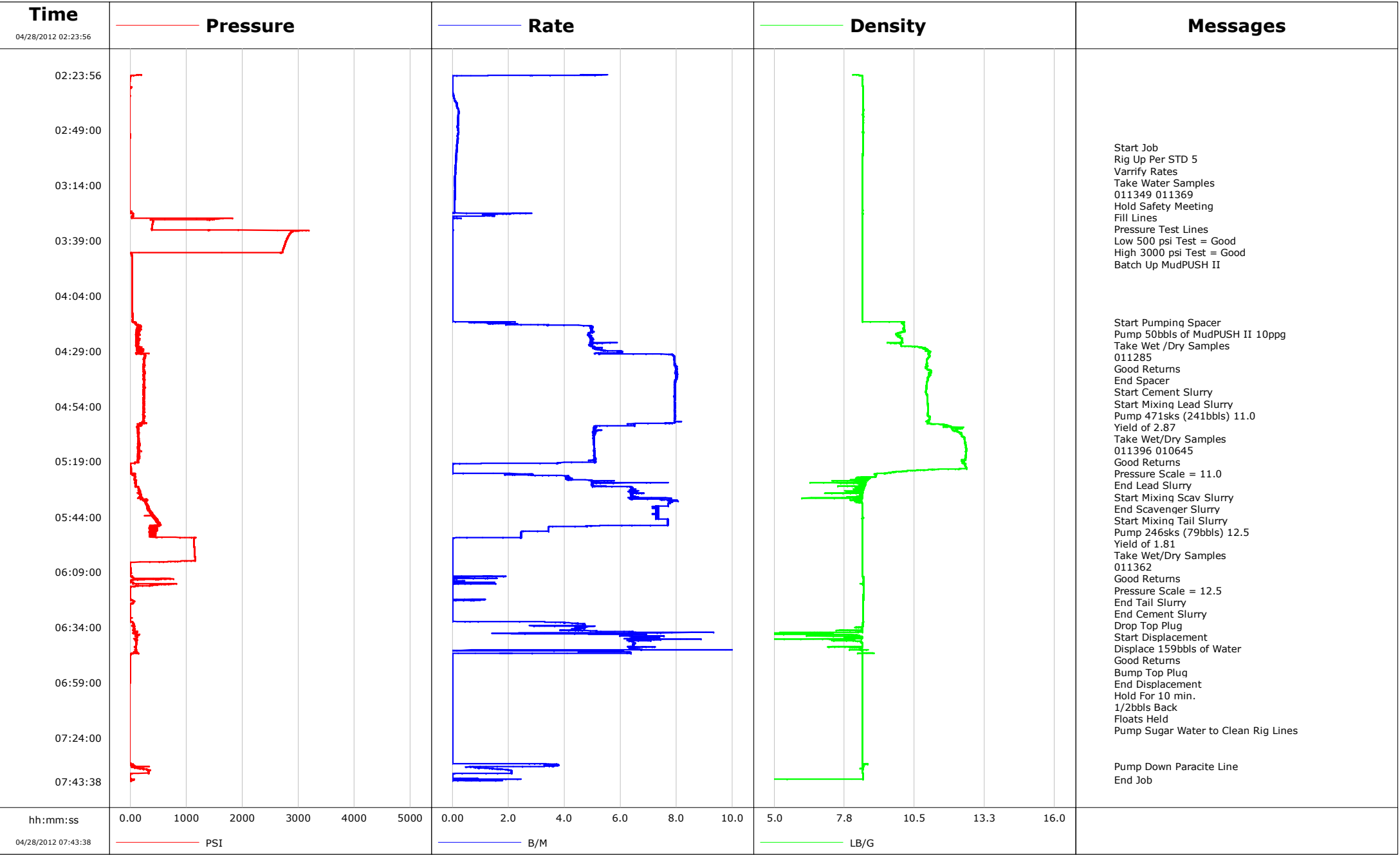


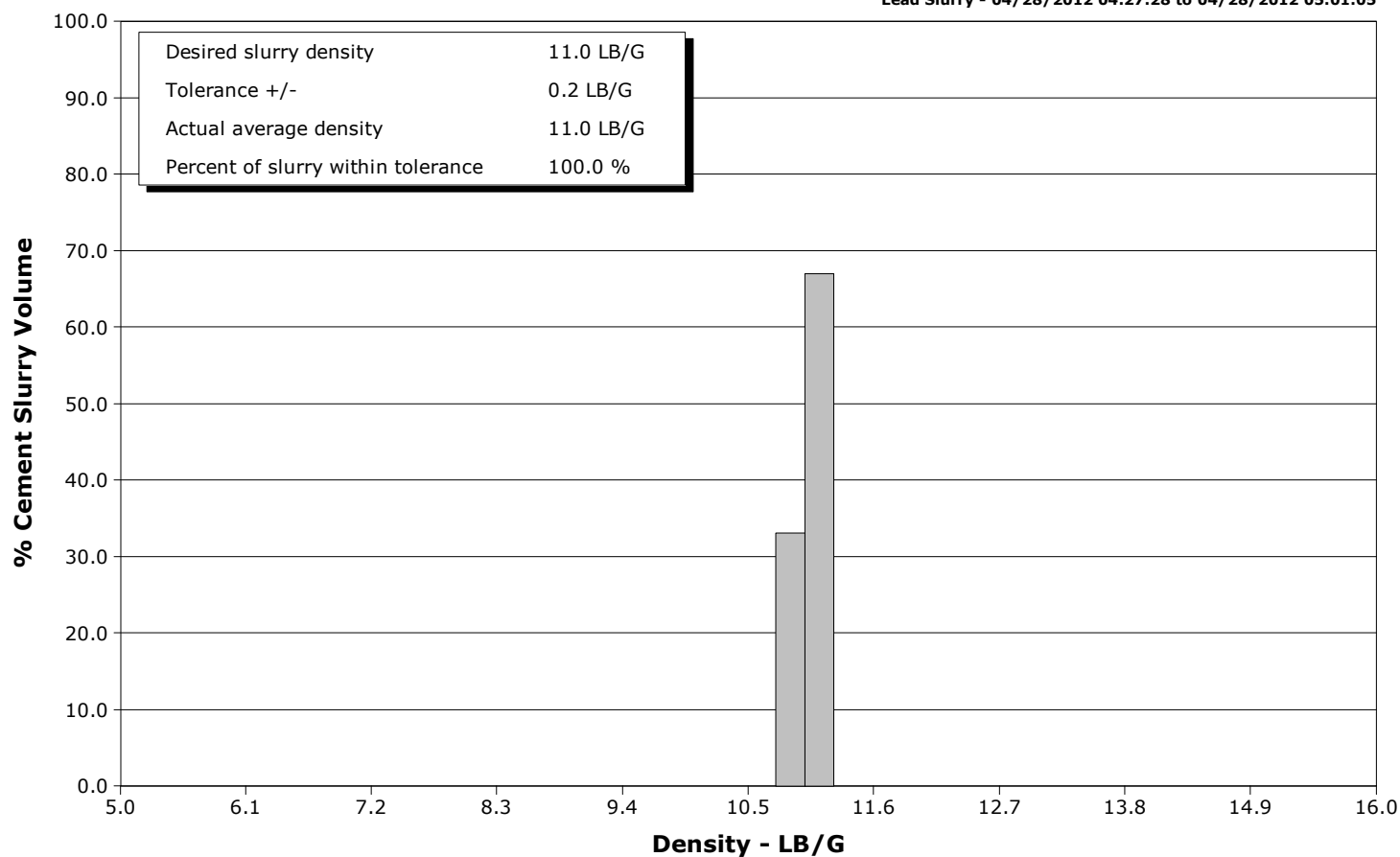
Well	SGU 8514D-22	Client	ENCANA
Field	STORY GULCH	SIR No.	733395
Engineer	Dant Ryan	Job Type	
Country	United States	Job Date	04-28-2012



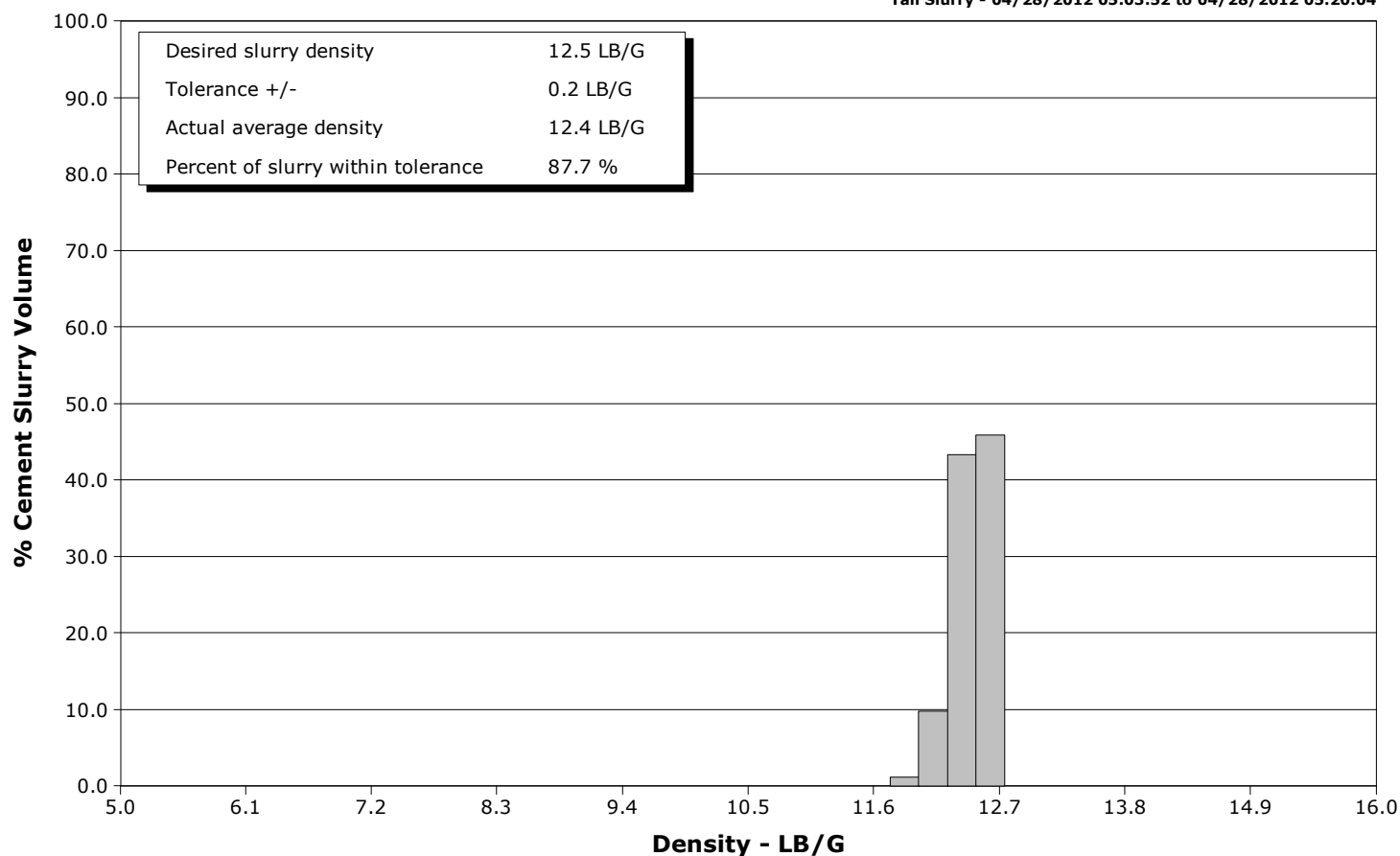
Well SGU 8514D-22
Field STORY GULCH
Engineer Dant Ryan
Country United States

Client ENCANA
SIR No. 733395
Job Type
Job Date 04-28-2012

Lead Slurry - 04/28/2012 04:27:28 to 04/28/2012 05:01:05



Tail Slurry - 04/28/2012 05:03:52 to 04/28/2012 05:20:04



				Customer ENCANA			Job Number 733395						
Well SGU 8514D-22 8514D-21			Location (legal) N-22			Schlumberger Location Grand Junction			Job Start Apr/28/2012				
Field STORY GULCH		Formation Name/Type Shale		Deviation deg		Bit Size 14.8 in		Well MD 2108.0 ft		Well TVD 2108.0 ft			
County GARFIELD		State/Province COLORADO		BHP psi		BHST 110 degF		BHCT 91 degF		Pore Press. Gradient lb/gal			
Well Master 0631310458		API/UWI											
Rig Name PATTERSON 306		Drilled For Gas		Service Via Land		Casing/Liner							
						Depth, ft		Size, in		Weight, lb/ft			
Offshore Zone		Well Class New		Well Type Development		120.0		16.0		65.0			
						2108.0		9.6		36.0			
Drilling Fluid Type Bentonite		Max. Density 9.00 lb/gal		Plastic Viscosity 15.000 cP		Tubing/Drill Pipe							
						T/D		Depth, ft		Size, in			
Service Line Cementing		Job Type											
Max. Allowed Tub. Press psi		Max. Allowed Ann. Press psi		WH Connection Single Cement head		Perforations/Open Hole							
						Top, ft		Bottom, ft		shot/ft			
										No. of Shots			
										Total Interval ft			
										Diameter in			
						Treat Down Casing		Displacement 159.0 bbl		Packer Type			
										Packer Depth ft			
						Tubing Vol. bbl		Casing Vol. 163.0 bbl		Annular Vol. 258.0 bbl			
										Openhole Vol. 449.0 bbl			
Casing/Tubing Secured <input checked="" type="checkbox"/>		1 Hole Vol. Circulated prior to Cement <input checked="" type="checkbox"/>		Casing Tools				Squeeze Job					
Lift Pressure 1043 psi				Shoe Type Float				Squeeze Type					
Pipe Rotated <input type="checkbox"/>		Pipe Reciprocated <input type="checkbox"/>		Shoe Depth 2108.0 ft				Tool Type					
No. Centralizers		Top Plugs 1		Bottom Plugs		Stage Tool Type				Tool Depth ft			
Cement Head Type Single						Stage Tool Depth ft				Tail Pipe Size in			
Job Scheduled For Apr/28/2012 00:00		Arrived on Location Apr/28/2012 00:00		Leave Location Apr/28/2012		Collar Type Float				Tail Pipe Depth ft			
						Collar Depth 2064.0 ft				Sqz. Total Vol. bbl			
Date	Time 24-hr clock	Treating Pressure PSI	Flow Rate B/M	Density LB/G	Volume BBL	Message							
04/28/2012	02:23:56	151	4.6	8.17	22.9	Started Acquisition							
04/28/2012	02:25:36	0	0.0	8.47	0.0								
04/28/2012	02:27:16	-1	0.0	8.47	0.0								
04/28/2012	02:28:56	-1	0.0	8.47	0.0								
04/28/2012	02:30:36	-1	0.0	8.48	0.0								
04/28/2012	02:32:16	-1	0.0	8.48	0.0								
04/28/2012	02:33:56	-1	0.1	8.48	0.1								
04/28/2012	02:35:36	-1	0.1	8.49	0.2								
04/28/2012	02:37:16	-1	0.2	8.49	0.4								
04/28/2012	02:38:56	-1	0.2	8.49	0.7								
04/28/2012	02:40:36	-1	0.2	8.49	1.1								
04/28/2012	02:42:16	-1	0.2	8.49	1.4								
04/28/2012	02:43:56	-1	0.2	8.48	1.8								
04/28/2012	02:45:36	-1	0.2	8.49	2.1								
04/28/2012	02:47:16	-1	0.2	8.49	2.5								
04/28/2012	02:48:56	-1	0.2	8.48	2.8								
04/28/2012	02:50:36	-1	0.2	8.48	3.2								
04/28/2012	02:52:16	-1	0.2	8.48	3.5								
04/28/2012	02:53:56	-1	0.2	8.48	3.8								
04/28/2012	02:55:36	-1	0.2	8.48	4.1								
04/28/2012	02:56:49	-1	0.2	8.48	4.3	Start Job							

Well			Field		Job Start		Customer		Job Number	
SGU 8514D-22 8514D-21			STORY GULCH		Apr/28/2012		ENCANA		733395	
Date	Time 24-hr clock	Treating Pressure PSI	Flow Rate B/M	Density LB/G	Volume BBL	Message				
04/28/2012	02:57:16	-0	0.2	8.48	4.4					
04/28/2012	02:58:56	-1	0.1	8.48	4.7					
04/28/2012	03:00:36	-1	0.1	8.48	4.9					
04/28/2012	03:02:16	-0	0.1	8.47	5.1					
04/28/2012	03:03:56	-1	0.1	8.47	5.4					
04/28/2012	03:05:36	-1	0.1	8.47	5.6					
04/28/2012	03:07:16	-2	0.1	8.47	5.8					
04/28/2012	03:08:56	-1	0.1	8.47	5.9					
04/28/2012	03:10:36	-1	0.1	8.47	6.1					
04/28/2012	03:12:16	-1	0.1	8.47	6.3					
04/28/2012	03:13:56	-1	0.1	8.47	6.4					
04/28/2012	03:15:36	-1	0.1	8.47	6.6					
04/28/2012	03:17:16	-1	0.1	8.47	6.8					
04/28/2012	03:18:56	-1	0.1	8.47	7.0					
04/28/2012	03:20:36	-1	0.1	8.47	7.1					
04/28/2012	03:22:16	-1	0.1	8.47	7.3					
04/28/2012	03:23:08	-1	0.1	8.47	7.3	Fill Lines				
04/28/2012	03:23:09	-1	0.1	8.47	7.3	Pressure Test Lines				
04/28/2012	03:23:12	-1	0.1	8.47	7.4	Low 500 psi Test = Good				
04/28/2012	03:23:33	-1	0.1	8.47	7.4	High 3000 psi Test = Good				
04/28/2012	03:23:56	-1	0.1	8.47	7.4					
04/28/2012	03:25:36	-1	0.1	8.47	7.5					
04/28/2012	03:27:16	50	1.1	8.46	1.1					
04/28/2012	03:28:56	1826	0.2	8.46	2.1					
04/28/2012	03:30:36	407	0.0	8.46	2.1					
04/28/2012	03:32:16	396	0.0	8.46	2.1					
04/28/2012	03:33:56	388	0.0	8.46	2.1					
04/28/2012	03:35:36	2859	0.0	8.47	2.1					
04/28/2012	03:37:16	2819	0.0	8.47	2.1					
04/28/2012	03:38:56	2788	0.0	8.47	2.1					
04/28/2012	03:40:36	2763	0.0	8.47	2.1					
04/28/2012	03:42:16	2742	0.0	8.47	2.1					
04/28/2012	03:43:56	2722	0.0	8.47	2.1					
04/28/2012	03:45:36	30	0.0	8.47	2.1					
04/28/2012	03:46:22	37	0.0	8.47	2.1	Batch Up MudPUSH II				
04/28/2012	03:47:16	38	0.0	8.47	2.1					
04/28/2012	03:48:56	39	0.0	8.47	2.1					
04/28/2012	03:50:36	38	0.0	8.47	2.1					
04/28/2012	03:52:16	38	0.0	8.47	2.1					
04/28/2012	03:53:56	37	0.0	8.47	2.1					
04/28/2012	03:55:36	38	0.0	8.47	2.1					
04/28/2012	03:57:16	38	0.0	8.47	2.1					
04/28/2012	03:58:56	37	0.0	8.47	2.1					
04/28/2012	04:00:36	41	0.0	8.47	2.1					
04/28/2012	04:02:16	38	0.0	8.47	2.1					
04/28/2012	04:03:56	38	0.0	8.47	2.1					
04/28/2012	04:05:36	39	0.0	8.47	2.1					
04/28/2012	04:07:16	39	0.0	8.47	2.1					
04/28/2012	04:08:56	39	0.0	8.47	2.1					
04/28/2012	04:10:36	39	0.0	8.47	2.1					
04/28/2012	04:12:16	44	0.0	8.47	2.1					
04/28/2012	04:13:56	44	0.0	8.47	2.1					
04/28/2012	04:15:36	43	0.0	8.47	2.1					
04/28/2012	04:15:49	79	1.9	9.51	2.2	Start Pumping Spacer				

Well			Field		Job Start		Customer		Job Number	
SGU 8514D-22 8514D-21			STORY GULCH		Apr/28/2012		ENCANA		733395	
Date	Time 24-hr clock	Treating Pressure PSI		Flow Rate B/M	Density LB/G		Volume BBL		Message	
04/28/2012	04:17:16	139		3.4	10.09		4.8			
04/28/2012	04:18:56	128		5.0	10.06		12.7			
04/28/2012	04:20:36	149		5.0	9.96		21.0			
04/28/2012	04:21:55	111		4.9	9.91		27.5		Good Returns	
04/28/2012	04:22:16	122		4.9	9.90		29.2			
04/28/2012	04:23:56	168		5.0	10.01		37.4			
04/28/2012	04:25:36	143		5.0	9.96		45.8			
04/28/2012	04:27:16	152		5.1	10.72		54.1			
04/28/2012	04:27:22	131		5.1	10.79		54.6		End Spacer	
04/28/2012	04:27:27	133		5.2	10.91		55.0		Start Cement Slurry	
04/28/2012	04:27:28	150		5.2	10.94		55.1		Start Mixing Lead Slurry	
04/28/2012	04:27:33	199		5.4	10.83		55.6		Pump 471sks (241bbls) 11.0	
04/28/2012	04:27:55	202		5.1	10.90		57.4		Good Returns	
04/28/2012	04:28:56	152		5.6	11.03		62.8			
04/28/2012	04:30:00	98		5.1	11.06		69.1		Pressure Scale = 11.0	
04/28/2012	04:30:36	257		7.8	11.07		72.8			
04/28/2012	04:32:16	256		7.9	11.03		86.0			
04/28/2012	04:33:56	242		7.9	10.99		99.2			
04/28/2012	04:35:36	240		8.0	11.00		112.4			
04/28/2012	04:37:16	250		8.0	11.01		125.7			
04/28/2012	04:38:56	248		8.0	11.07		139.1			
04/28/2012	04:40:36	249		8.0	11.06		152.4			
04/28/2012	04:42:16	249		8.0	11.01		165.7			
04/28/2012	04:43:56	243		8.0	10.98		179.0			
04/28/2012	04:45:36	250		7.9	10.98		192.2			
04/28/2012	04:47:16	238		7.9	10.96		205.4			
04/28/2012	04:48:56	245		7.9	11.00		218.7			
04/28/2012	04:50:36	251		7.9	11.01		231.9			
04/28/2012	04:52:16	244		7.9	11.01		245.2			
04/28/2012	04:53:56	238		8.0	11.03		258.4			
04/28/2012	04:55:36	259		7.9	11.05		271.6			
04/28/2012	04:57:16	245		7.9	11.02		284.9			
04/28/2012	04:58:56	247		8.0	11.08		298.1			
04/28/2012	05:00:36	247		7.9	11.06		311.3			
04/28/2012	05:01:05	247		8.0	11.03		315.2		End Lead Slurry	
04/28/2012	05:02:08	180		6.5	11.46		323.0		Start Mixing Scav Slurry	
04/28/2012	05:02:16	191		6.5	11.62		323.9			
04/28/2012	05:03:51	127		5.1	11.97		332.8		End Scavenger Slurry	
04/28/2012	05:03:52	151		5.1	11.97		332.9		Start Mixing Tail Slurry	
04/28/2012	05:03:56	150		5.1	11.97		333.3			
04/28/2012	05:05:00	134		5.2	12.03		338.7		Pump 246sks (79bbls) 12.5	
04/28/2012	05:05:36	146		5.0	12.22		341.7			
04/28/2012	05:07:16	152		5.0	12.36		350.2			
04/28/2012	05:08:56	154		5.1	12.47		358.6			
04/28/2012	05:10:36	146		5.1	12.50		367.0			
04/28/2012	05:10:51	153		5.1	12.49		368.3		Good Returns	
04/28/2012	05:12:16	138		5.1	12.53		375.5			
04/28/2012	05:13:56	162		5.1	12.55		383.9			
04/28/2012	05:15:36	151		5.1	12.54		392.4			
04/28/2012	05:16:12	165		5.1	12.52		395.4		Pressure Scale = 12.5	
04/28/2012	05:17:16	144		5.1	12.52		400.8			
04/28/2012	05:18:56	134		5.1	12.44		409.3			
04/28/2012	05:20:04	8		0.1	12.51		413.9		End Tail Slurry	
04/28/2012	05:20:05	8		0.0	12.51		413.9		End Cement Slurry	

Well			Field		Job Start		Customer		Job Number	
SGU 8514D-22 8514D-21			STORY GULCH		Apr/28/2012		ENCANA		733395	
Date	Time 24-hr clock	Treating Pressure PSI	Flow Rate B/M	Density LB/G	Volume BBL	Message				
04/28/2012	05:20:08	8	0.0	12.50	413.9	Start Displacement				
04/28/2012	05:20:36	7	0.0	12.49	413.9					
04/28/2012	05:21:00	7	0.0	12.50	413.9	Displace 159bbls of Water				
04/28/2012	05:22:16	20	0.0	12.45	413.9					
04/28/2012	05:23:56	20	0.0	9.60	413.9					
04/28/2012	05:25:36	88	4.2	8.99	417.0					
04/28/2012	05:27:16	79	4.2	8.17	423.9					
04/28/2012	05:28:56	110	5.0	8.28	432.4					
04/28/2012	05:30:00	107	5.0	8.57	437.8	Good Returns				
04/28/2012	05:30:36	147	6.4	8.55	441.1					
04/28/2012	05:32:16	160	6.4	8.49	451.8					
04/28/2012	05:33:56	177	6.4	8.44	462.5					
04/28/2012	05:35:36	215	7.8	6.09	473.3					
04/28/2012	05:37:16	281	7.9	8.37	485.4					
04/28/2012	05:38:56	325	7.7	8.46	498.4					
04/28/2012	05:40:36	328	7.3	8.46	510.6					
04/28/2012	05:42:16	385	7.4	8.47	522.8					
04/28/2012	05:43:56	414	7.4	8.47	534.9					
04/28/2012	05:45:36	479	7.7	8.46	547.3					
04/28/2012	05:47:16	492	7.7	8.46	560.1					
04/28/2012	05:48:56	395	3.4	8.46	569.7					
04/28/2012	05:50:36	369	3.4	8.46	575.5					
04/28/2012	05:52:16	379	2.5	8.46	579.6					
04/28/2012	05:53:31	1161	1.8	8.46	582.7	Bump Top Plug				
04/28/2012	05:53:32	1161	1.8	8.46	582.7	End Displacement				
04/28/2012	05:53:35	1145	0.5	8.46	582.8	Hold For 10 min.				
04/28/2012	05:53:56	1140	0.0	8.46	582.8					
04/28/2012	05:55:36	1141	0.0	8.47	582.8					
04/28/2012	05:57:16	1145	0.0	8.47	582.8					
04/28/2012	05:58:56	1148	0.0	8.47	582.8					
04/28/2012	06:00:36	1152	0.0	8.47	582.8					
04/28/2012	06:02:16	1155	0.0	8.47	582.8					
04/28/2012	06:03:56	1131	0.0	8.47	582.8					
04/28/2012	06:04:57	2	0.0	8.47	582.8	1/2bbls Back				
04/28/2012	06:05:36	1	0.0	8.47	582.8					
04/28/2012	06:07:16	9	0.0	8.47	582.8					
04/28/2012	06:08:56	11	0.0	8.47	582.8					
04/28/2012	06:09:34	19	0.0	8.47	582.8	Pump Sugar Water to Clean Rig Lines				
04/28/2012	06:10:36	7	0.0	8.47	582.8					
04/28/2012	06:12:16	586	0.0	8.50	583.6					
04/28/2012	06:13:56	52	0.0	8.49	583.9					
04/28/2012	06:15:36	62	0.0	8.50	584.1					
04/28/2012	06:17:16	7	0.0	8.50	584.1					
04/28/2012	06:18:56	6	0.0	8.50	584.1					
04/28/2012	06:20:36	6	0.0	8.49	584.1					
04/28/2012	06:22:16	83	0.0	8.49	584.4					
04/28/2012	06:23:56	7	0.0	8.49	584.4					
04/28/2012	06:25:36	7	0.0	8.49	584.4					
04/28/2012	06:27:16	7	0.0	8.49	584.4					
04/28/2012	06:28:56	7	0.0	8.49	584.4					
04/28/2012	06:30:36	7	0.0	8.49	584.4					
04/28/2012	06:32:16	52	4.5	8.48	587.0					
04/28/2012	06:33:56	67	4.7	8.47	594.7					
04/28/2012	06:35:36	78	4.6	8.26	602.1					

Well			Field		Job Start		Customer		Job Number	
SGU 8514D-22 8514D-21			STORY GULCH		Apr/28/2012		ENCANA		733395	
Date	Time 24-hr clock	Treating Pressure PSI	Flow Rate B/M	Density LB/G	Volume BBL	Message				
04/28/2012	06:38:56	117	6.4	8.14	622.7					
04/28/2012	06:40:36	109	6.5	8.43	633.8					
04/28/2012	06:42:16	110	6.4	8.46	644.6					
04/28/2012	06:43:56	110	6.6	8.46	655.4					
04/28/2012	06:45:36	123	6.4	8.46	664.3					
04/28/2012	06:47:16	3	0.0	8.46	666.0					
04/28/2012	06:48:56	1	0.0	8.46	666.0					
04/28/2012	06:50:36	1	0.0	8.46	666.0					
04/28/2012	06:52:16	0	0.0	8.46	666.0					
04/28/2012	06:53:56	1	0.0	8.47	666.0					
04/28/2012	06:55:36	1	0.0	8.47	666.0					
04/28/2012	06:57:16	0	0.0	8.47	666.0					
04/28/2012	06:58:56	0	0.0	8.47	666.0					
04/28/2012	07:00:36	-2	0.0	8.47	666.0					
04/28/2012	07:02:16	-4	0.0	8.47	666.0					
04/28/2012	07:03:56	-4	0.0	8.47	666.0					
04/28/2012	07:05:36	-4	0.0	8.47	666.0					
04/28/2012	07:07:16	-5	0.0	8.47	666.0					
04/28/2012	07:08:56	-4	0.0	8.47	666.0					
04/28/2012	07:10:36	-5	0.0	8.47	666.0					
04/28/2012	07:12:16	-5	0.0	8.47	666.0					
04/28/2012	07:13:56	-5	0.0	8.47	666.0					
04/28/2012	07:15:36	-4	0.0	8.47	666.0					
04/28/2012	07:17:16	-4	0.0	8.47	666.0					
04/28/2012	07:18:56	-4	0.0	8.47	666.0					
04/28/2012	07:20:36	-4	0.0	8.47	666.0					
04/28/2012	07:22:16	-4	0.0	8.47	666.0					
04/28/2012	07:23:56	-4	0.0	8.47	666.0					
04/28/2012	07:25:36	-4	0.0	8.47	666.0					
04/28/2012	07:27:16	-4	0.0	8.47	666.0					
04/28/2012	07:28:56	-4	0.0	8.47	666.0					
04/28/2012	07:30:36	-4	0.0	8.47	666.0					
04/28/2012	07:32:16	-4	0.0	8.47	666.0					
04/28/2012	07:33:56	-5	0.0	8.47	666.0					
04/28/2012	07:35:36	-5	0.0	8.47	666.0					
04/28/2012	07:36:51	71	3.6	8.51	670.0	Pump Down Paracite Line				
04/28/2012	07:37:16	25	0.5	8.49	671.0					
04/28/2012	07:38:56	330	2.1	8.47	673.4					
04/28/2012	07:40:36	-1	0.0	8.48	676.1					
04/28/2012	07:42:16	2	0.0	8.48	676.1					

Well SGU 8514D-22 8514D-21	Field STORY GULCH	Job Start Apr/28/2012	Customer ENCANA	Job Number 733395
--------------------------------------	-----------------------------	---------------------------------	---------------------------	-----------------------------

Post Job Summary

Average Pump Rates, bbl/min					Volume of Fluid Injected, bbl			
Slurry 3.9	N2	Mud	Maximum Rate 8.0		Total Slurry 320.0	Mud 0.0	Spacer 50.0	N2
Treating Pressure Summary, psi					Breakdown Fluid			
Maximum 3186	Final 14	Average 315	Bump Plug to 900	Breakdown	Type	Volume bbl	Density lb/gal	
Avg. N2 Percent %		Designed Slurry Volume 320.0 bbl	Displacement 159.0 bbl	Mix Water Temp 60 degF	Cement Circulated to Surface? <input checked="" type="checkbox"/>	Volume 39.0 bbl		
					Washed Thru Perfs <input type="checkbox"/>	To ft		
Customer or Authorized Representative GARTH GRAMLICH			Schlumberger Supervisor Dant Ryan			Circulation Lost <input type="checkbox"/>	Job Completed <input checked="" type="checkbox"/>	
						-		-