

Anadarko Petroleum Corp.

Weld County, CO (NAD 83)

Sec. 21-T1N-R67W

Howard 3N-33HZ

Plan A Rev 0

Plan: Plan A Rev 0 Permit

Sperry Drilling Services

Proposal Report

20 December, 2012

Well Coordinates: 1,254,409.46 N, 3,168,290.64 E (40° 01' 48.63" N, 104° 53' 56.48" W)

Ground Level: 5,023.00 ft

Local Coordinate Origin:

Centered on Well Howard 3N-33HZ

Viewing Datum:

RKB=17 @ 5040.00ft (Drilling Rig)

TVDs to System:

N

North Reference:

True

Unit System:

API - US Survey Feet - Custom

Geodetic Scale Factor Applied

Version: 2003.16 Build: 431

HALLIBURTON

Project: Weld County, CO (NAD 83)
 Site: Sec. 21-T1N-R67W
 Well: Howard 3N-33HZ
 Wellbore: Plan A Rev 0
 Design: Plan A Rev 0 Permit

Anadarko Petroleum Corp.

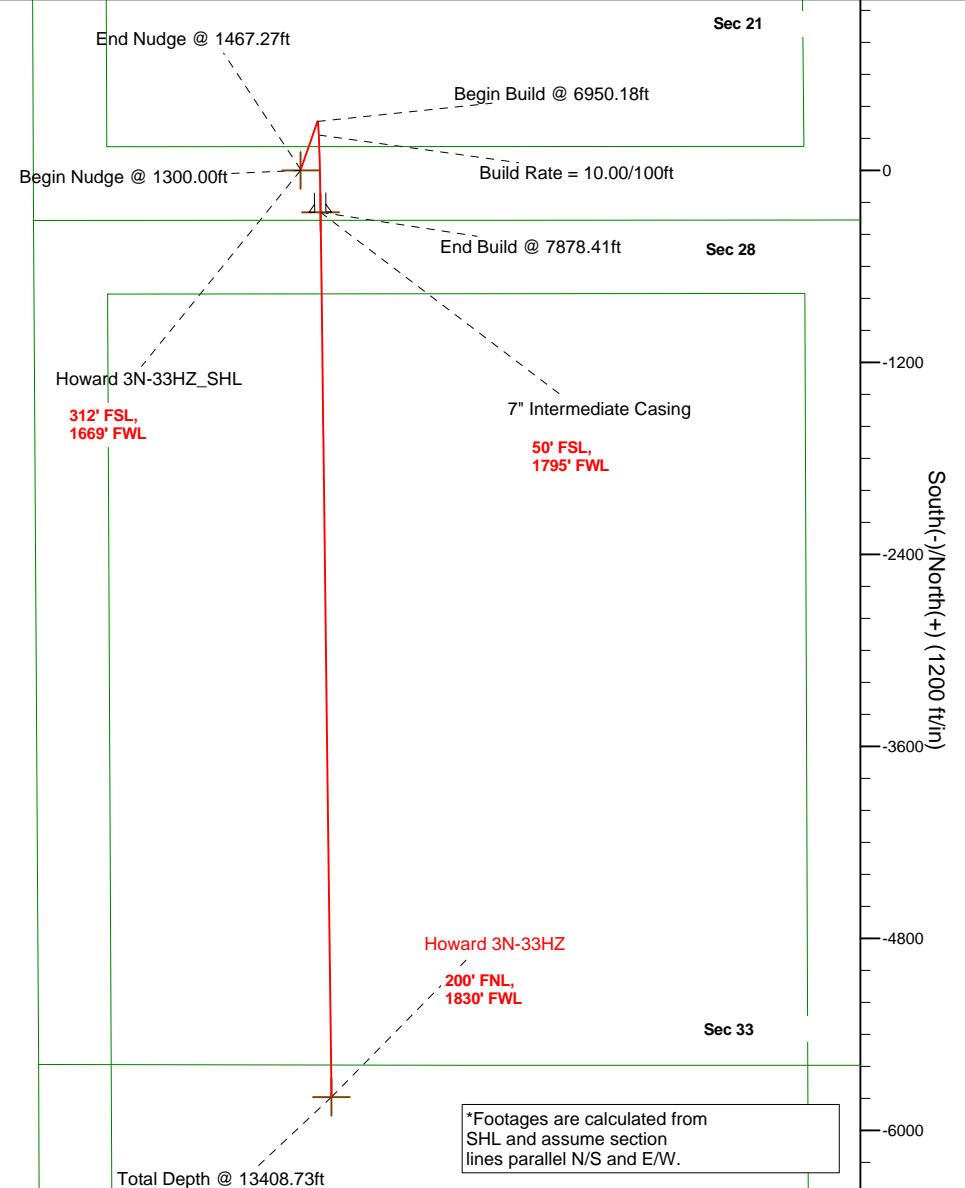
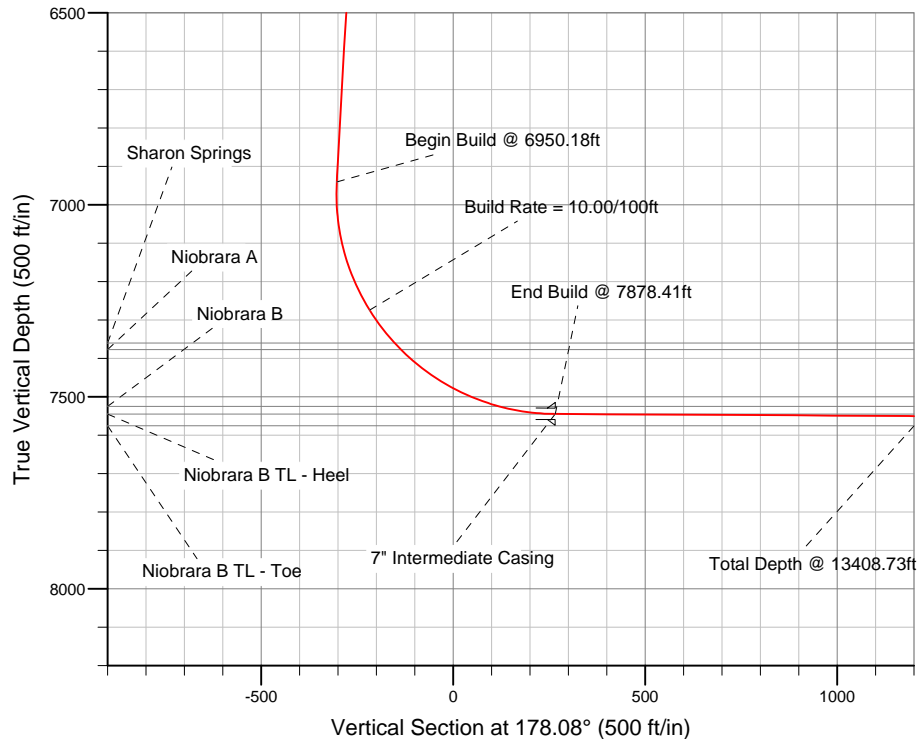


SECTION DETAILS

Sec	MD	Inc	Azi	TVD	+N/-S	+E/-W	DLeg	TFace	VSec	Target
1	0.00	0.00	0.00	0.00	0.00	0.00	0.00	0.00	0.00	
2	1300.00	0.00	0.00	1300.00	0.00	0.00	0.00	0.00	0.00	
3	1467.27	3.35	19.24	1467.18	4.61	1.61	2.00	19.24	-4.55	
4	6950.18	3.35	19.24	6940.74	306.69	107.04	0.00	0.00	-302.94	
5	7878.41	89.68	179.30	7545.00	-262.00	126.00	10.00	160.03	266.07	Howard 3N-33HZ_CP
6	13408.73	89.68	179.30	7576.00	-5791.81	193.83	0.00	0.00	5795.05	Howard 3N-33HZ_BHL

WELLBORE TARGET DETAILS (LAT/LONG)

Name	TVD	+N/-S	+E/-W	Latitude	Longitude	Shape
Howard 3N-33HZ_SHL	0.00	0.00	0.00	40.030176	-104.899021	Point
Howard 3N-33HZ_CP	7545.00	-262.00	126.00	40.029457	-104.898571	Point
Howard 3N-33HZ_BHL	7576.00	-5791.81	193.83	40.014277	-104.898329	Point



*Footages are calculated from
 SHL and assume section
 lines parallel N/S and E/W.

WELL DETAILS: Howard 3N-33HZ

Ground Level: 5023.00 RKB=17 @ 5040.00ft (Drilling Rig)

Plan: Plan A Rev 0 Permit (Howard 3N-33HZ/Plan A Rev 0)

Created By: Fred Hartmann Date: 12/20/2012
 Reviewed: _____ Date: _____

Plan Report for Howard 3N-33HZ - Plan A Rev 0 Permit

Measured Depth (ft)	Inclination (°)	Azimuth (°)	Vertical Depth (ft)	+N/-S (ft)	+E/-W (ft)	Vertical Section (ft)	Dogleg Rate (°/100ft)	Build Rate (°/100ft)	Turn Rate (°/100ft)	Toolface Azimuth (°)
0.00	0.00	0.00	0.00	0.00	0.00	0.00	0.00	0.00	0.00	0.00
100.00	0.00	0.00	100.00	0.00	0.00	0.00	0.00	0.00	0.00	0.00
200.00	0.00	0.00	200.00	0.00	0.00	0.00	0.00	0.00	0.00	0.00
300.00	0.00	0.00	300.00	0.00	0.00	0.00	0.00	0.00	0.00	0.00
400.00	0.00	0.00	400.00	0.00	0.00	0.00	0.00	0.00	0.00	0.00
500.00	0.00	0.00	500.00	0.00	0.00	0.00	0.00	0.00	0.00	0.00
600.00	0.00	0.00	600.00	0.00	0.00	0.00	0.00	0.00	0.00	0.00
700.00	0.00	0.00	700.00	0.00	0.00	0.00	0.00	0.00	0.00	0.00
800.00	0.00	0.00	800.00	0.00	0.00	0.00	0.00	0.00	0.00	0.00
900.00	0.00	0.00	900.00	0.00	0.00	0.00	0.00	0.00	0.00	0.00
1,000.00	0.00	0.00	1,000.00	0.00	0.00	0.00	0.00	0.00	0.00	0.00
1,100.00	0.00	0.00	1,100.00	0.00	0.00	0.00	0.00	0.00	0.00	0.00
1,200.00	0.00	0.00	1,200.00	0.00	0.00	0.00	0.00	0.00	0.00	0.00
1,300.00	0.00	0.00	1,300.00	0.00	0.00	0.00	0.00	0.00	0.00	0.00
Begin Nudge @ 1300.00ft										
1,400.00	2.00	19.24	1,399.98	1.65	0.58	-1.63	2.00	2.00	0.00	19.24
1,467.27	3.35	19.24	1,467.17	4.61	1.61	-4.55	2.00	2.00	0.00	0.00
End Nudge @ 1467.27ft										
1,500.00	3.35	19.24	1,499.85	6.41	2.24	-6.33	0.00	0.00	0.00	0.00
1,600.00	3.35	19.24	1,599.68	11.92	4.16	-11.78	0.00	0.00	0.00	0.00
1,700.00	3.35	19.24	1,699.51	17.43	6.08	-17.22	0.00	0.00	0.00	0.00
1,800.00	3.35	19.24	1,799.34	22.94	8.01	-22.66	0.00	0.00	0.00	0.00
1,900.00	3.35	19.24	1,899.17	28.45	9.93	-28.10	0.00	0.00	0.00	0.00
2,000.00	3.35	19.24	1,999.00	33.96	11.85	-33.54	0.00	0.00	0.00	0.00
2,100.00	3.35	19.24	2,098.83	39.47	13.78	-38.99	0.00	0.00	0.00	0.00
2,200.00	3.35	19.24	2,198.66	44.98	15.70	-44.43	0.00	0.00	0.00	0.00
2,300.00	3.35	19.24	2,298.49	50.49	17.62	-49.87	0.00	0.00	0.00	0.00
2,400.00	3.35	19.24	2,398.32	56.00	19.54	-55.31	0.00	0.00	0.00	0.00
2,500.00	3.35	19.24	2,498.15	61.51	21.47	-60.76	0.00	0.00	0.00	0.00
2,600.00	3.35	19.24	2,597.97	67.02	23.39	-66.20	0.00	0.00	0.00	0.00
2,700.00	3.35	19.24	2,697.80	72.53	25.31	-71.64	0.00	0.00	0.00	0.00
2,800.00	3.35	19.24	2,797.63	78.04	27.24	-77.08	0.00	0.00	0.00	0.00
2,900.00	3.35	19.24	2,897.46	83.55	29.16	-82.52	0.00	0.00	0.00	0.00
3,000.00	3.35	19.24	2,997.29	89.06	31.08	-87.97	0.00	0.00	0.00	0.00
3,100.00	3.35	19.24	3,097.12	94.57	33.01	-93.41	0.00	0.00	0.00	0.00
3,200.00	3.35	19.24	3,196.95	100.08	34.93	-98.85	0.00	0.00	0.00	0.00
3,300.00	3.35	19.24	3,296.78	105.58	36.85	-104.29	0.00	0.00	0.00	0.00
3,400.00	3.35	19.24	3,396.61	111.09	38.77	-109.74	0.00	0.00	0.00	0.00
3,500.00	3.35	19.24	3,496.44	116.60	40.70	-115.18	0.00	0.00	0.00	0.00
3,600.00	3.35	19.24	3,596.27	122.11	42.62	-120.62	0.00	0.00	0.00	0.00
3,700.00	3.35	19.24	3,696.10	127.62	44.54	-126.06	0.00	0.00	0.00	0.00
3,800.00	3.35	19.24	3,795.93	133.13	46.47	-131.50	0.00	0.00	0.00	0.00
3,900.00	3.35	19.24	3,895.76	138.64	48.39	-136.95	0.00	0.00	0.00	0.00
4,000.00	3.35	19.24	3,995.59	144.15	50.31	-142.39	0.00	0.00	0.00	0.00
4,100.00	3.35	19.24	4,095.42	149.66	52.23	-147.83	0.00	0.00	0.00	0.00
4,200.00	3.35	19.24	4,195.25	155.17	54.16	-153.27	0.00	0.00	0.00	0.00
4,300.00	3.35	19.24	4,295.08	160.68	56.08	-158.71	0.00	0.00	0.00	0.00
4,400.00	3.35	19.24	4,394.91	166.19	58.00	-164.16	0.00	0.00	0.00	0.00
4,500.00	3.35	19.24	4,494.74	171.70	59.93	-169.60	0.00	0.00	0.00	0.00
4,600.00	3.35	19.24	4,594.57	177.21	61.85	-175.04	0.00	0.00	0.00	0.00
4,700.00	3.35	19.24	4,694.40	182.72	63.77	-180.48	0.00	0.00	0.00	0.00
4,800.00	3.35	19.24	4,794.23	188.23	65.70	-185.93	0.00	0.00	0.00	0.00
4,825.82	3.35	19.24	4,820.00	189.65	66.19	-187.33	0.00	0.00	0.00	0.00
Sussex										
4,900.00	3.35	19.24	4,894.06	193.74	67.62	-191.37	0.00	0.00	0.00	0.00
5,000.00	3.35	19.24	4,993.88	199.25	69.54	-196.81	0.00	0.00	0.00	0.00
5,100.00	3.35	19.24	5,093.71	204.76	71.46	-202.25	0.00	0.00	0.00	0.00
5,200.00	3.35	19.24	5,193.54	210.27	73.39	-207.69	0.00	0.00	0.00	0.00

Plan Report for Howard 3N-33HZ - Plan A Rev 0 Permit

Measured Depth (ft)	Inclination (°)	Azimuth (°)	Vertical Depth (ft)	+N-S (ft)	+E-W (ft)	Vertical Section (ft)	Dogleg Rate (°/100ft)	Build Rate (°/100ft)	Turn Rate (°/100ft)	Toolface Azimuth (°)
5,300.00	3.35	19.24	5,293.37	215.78	75.31	-213.14	0.00	0.00	0.00	0.00
5,400.00	3.35	19.24	5,393.20	221.29	77.23	-218.58	0.00	0.00	0.00	0.00
5,500.00	3.35	19.24	5,493.03	226.80	79.16	-224.02	0.00	0.00	0.00	0.00
5,600.00	3.35	19.24	5,592.86	232.31	81.08	-229.46	0.00	0.00	0.00	0.00
5,700.00	3.35	19.24	5,692.69	237.81	83.00	-234.91	0.00	0.00	0.00	0.00
5,800.00	3.35	19.24	5,792.52	243.32	84.93	-240.35	0.00	0.00	0.00	0.00
5,900.00	3.35	19.24	5,892.35	248.83	86.85	-245.79	0.00	0.00	0.00	0.00
6,000.00	3.35	19.24	5,992.18	254.34	88.77	-251.23	0.00	0.00	0.00	0.00
6,100.00	3.35	19.24	6,092.01	259.85	90.69	-256.67	0.00	0.00	0.00	0.00
6,200.00	3.35	19.24	6,191.84	265.36	92.62	-262.12	0.00	0.00	0.00	0.00
6,300.00	3.35	19.24	6,291.67	270.87	94.54	-267.56	0.00	0.00	0.00	0.00
6,400.00	3.35	19.24	6,391.50	276.38	96.46	-273.00	0.00	0.00	0.00	0.00
6,500.00	3.35	19.24	6,491.33	281.89	98.39	-278.44	0.00	0.00	0.00	0.00
6,600.00	3.35	19.24	6,591.16	287.40	100.31	-283.88	0.00	0.00	0.00	0.00
6,700.00	3.35	19.24	6,690.99	292.91	102.23	-289.33	0.00	0.00	0.00	0.00
6,800.00	3.35	19.24	6,790.82	298.42	104.15	-294.77	0.00	0.00	0.00	0.00
6,900.00	3.35	19.24	6,890.65	303.93	106.08	-300.21	0.00	0.00	0.00	0.00
6,950.18	3.35	19.24	6,940.74	306.69	107.04	-302.94	0.00	0.00	0.00	0.00
Begin Build @ 6950.18ft										
7,000.00	2.16	147.46	6,990.53	307.27	108.03	-303.49	10.00	-2.37	257.36	160.03
7,100.00	11.89	173.87	7,089.68	295.41	110.15	-291.56	10.00	9.73	26.42	31.87
7,200.00	21.87	176.46	7,185.25	266.51	112.41	-262.60	10.00	9.97	2.58	5.55
7,300.00	31.86	177.47	7,274.35	221.44	114.73	-217.48	10.00	9.99	1.01	3.07
Build Rate = 10.00/100ft										
7,400.00	41.85	178.03	7,354.26	161.59	117.05	-157.58	10.00	9.99	0.56	2.16
7,407.75	42.62	178.06	7,360.00	156.38	117.23	-152.37	10.00	10.00	0.44	1.71
Sharon Springs										
7,431.30	44.98	178.16	7,377.00	140.09	117.76	-136.07	10.00	10.00	0.42	1.69
Niobrara A										
7,500.00	51.85	178.41	7,422.57	88.76	119.30	-84.72	10.00	10.00	0.36	1.62
7,600.00	61.84	178.69	7,477.19	5.17	121.40	-1.11	10.00	10.00	0.29	1.45
7,700.00	71.84	178.93	7,516.47	-86.63	123.30	90.71	10.00	10.00	0.24	1.30
7,729.74	74.81	178.99	7,525.00	-115.12	123.82	119.20	10.00	10.00	0.22	1.20
Niobrara B										
7,800.00	81.84	179.14	7,539.21	-183.87	124.93	187.95	10.00	10.00	0.21	1.18
7,878.41	89.68	179.30	7,545.00	-262.00	126.00	266.07	10.00	10.00	0.20	1.15
End Build @ 7878.41ft - Niobrara B TL - Heel - 7" Intermediate Casing - Howard 3N-33HZ_CP										
7,900.00	89.68	179.30	7,545.12	-283.58	126.26	287.65	0.00	0.00	0.00	1.14
8,000.00	89.68	179.30	7,545.68	-383.58	127.49	387.63	0.00	0.00	0.00	0.00
8,100.00	89.68	179.30	7,546.24	-483.57	128.72	487.60	0.00	0.00	0.00	0.00
8,200.00	89.68	179.30	7,546.80	-583.56	129.94	587.58	0.00	0.00	0.00	0.00
8,300.00	89.68	179.30	7,547.36	-683.55	131.17	687.55	0.00	0.00	0.00	0.00
8,400.00	89.68	179.30	7,547.92	-783.54	132.40	787.53	0.00	0.00	0.00	0.00
8,500.00	89.68	179.30	7,548.48	-883.53	133.62	887.51	0.00	0.00	0.00	0.00
8,600.00	89.68	179.30	7,549.04	-983.52	134.85	987.48	0.00	0.00	0.00	0.00
8,700.00	89.68	179.30	7,549.61	-1,083.51	136.08	1,087.46	0.00	0.00	0.00	0.00
8,800.00	89.68	179.30	7,550.17	-1,183.50	137.30	1,187.43	0.00	0.00	0.00	0.00
8,900.00	89.68	179.30	7,550.73	-1,283.49	138.53	1,287.41	0.00	0.00	0.00	0.00
9,000.00	89.68	179.30	7,551.29	-1,383.48	139.76	1,387.39	0.00	0.00	0.00	0.00
9,100.00	89.68	179.30	7,551.85	-1,483.48	140.98	1,487.36	0.00	0.00	0.00	0.00
9,200.00	89.68	179.30	7,552.41	-1,583.47	142.21	1,587.34	0.00	0.00	0.00	0.00
9,300.00	89.68	179.30	7,552.97	-1,683.46	143.44	1,687.31	0.00	0.00	0.00	0.00
9,400.00	89.68	179.30	7,553.53	-1,783.45	144.66	1,787.29	0.00	0.00	0.00	0.00
9,500.00	89.68	179.30	7,554.09	-1,883.44	145.89	1,887.27	0.00	0.00	0.00	0.00
9,600.00	89.68	179.30	7,554.65	-1,983.43	147.12	1,987.24	0.00	0.00	0.00	0.00
9,700.00	89.68	179.30	7,555.21	-2,083.42	148.34	2,087.22	0.00	0.00	0.00	0.00
9,800.00	89.68	179.30	7,555.77	-2,183.41	149.57	2,187.19	0.00	0.00	0.00	0.00
9,900.00	89.68	179.30	7,556.33	-2,283.40	150.80	2,287.17	0.00	0.00	0.00	0.00
10,000.00	89.68	179.30	7,556.89	-2,383.39	152.02	2,387.15	0.00	0.00	0.00	0.00

Plan Report for Howard 3N-33HZ - Plan A Rev 0 Permit

Measured Depth (ft)	Inclination (°)	Azimuth (°)	Vertical Depth (ft)	+N/-S (ft)	+E/-W (ft)	Vertical Section (ft)	Dogleg Rate (°/100ft)	Build Rate (°/100ft)	Turn Rate (°/100ft)	Toolface Azimuth (°)
10,100.00	89.68	179.30	7,557.45	-2,483.38	153.25	2,487.12	0.00	0.00	0.00	0.00
10,200.00	89.68	179.30	7,558.01	-2,583.38	154.48	2,587.10	0.00	0.00	0.00	0.00
10,300.00	89.68	179.30	7,558.57	-2,683.37	155.70	2,687.07	0.00	0.00	0.00	0.00
10,400.00	89.68	179.30	7,559.13	-2,783.36	156.93	2,787.05	0.00	0.00	0.00	0.00
10,500.00	89.68	179.30	7,559.70	-2,883.35	158.16	2,887.03	0.00	0.00	0.00	0.00
10,600.00	89.68	179.30	7,560.26	-2,983.34	159.38	2,987.00	0.00	0.00	0.00	0.00
10,700.00	89.68	179.30	7,560.82	-3,083.33	160.61	3,086.98	0.00	0.00	0.00	0.00
10,800.00	89.68	179.30	7,561.38	-3,183.32	161.84	3,186.95	0.00	0.00	0.00	0.00
10,900.00	89.68	179.30	7,561.94	-3,283.31	163.06	3,286.93	0.00	0.00	0.00	0.00
11,000.00	89.68	179.30	7,562.50	-3,383.30	164.29	3,386.90	0.00	0.00	0.00	0.00
11,100.00	89.68	179.30	7,563.06	-3,483.29	165.51	3,486.88	0.00	0.00	0.00	0.00
11,200.00	89.68	179.30	7,563.62	-3,583.28	166.74	3,586.86	0.00	0.00	0.00	0.00
11,300.00	89.68	179.30	7,564.18	-3,683.28	167.97	3,686.83	0.00	0.00	0.00	0.00
11,400.00	89.68	179.30	7,564.74	-3,783.27	169.19	3,786.81	0.00	0.00	0.00	0.00
11,500.00	89.68	179.30	7,565.30	-3,883.26	170.42	3,886.78	0.00	0.00	0.00	0.00
11,600.00	89.68	179.30	7,565.86	-3,983.25	171.65	3,986.76	0.00	0.00	0.00	0.00
11,700.00	89.68	179.30	7,566.42	-4,083.24	172.87	4,086.74	0.00	0.00	0.00	0.00
11,800.00	89.68	179.30	7,566.98	-4,183.23	174.10	4,186.71	0.00	0.00	0.00	0.00
11,900.00	89.68	179.30	7,567.54	-4,283.22	175.33	4,286.69	0.00	0.00	0.00	0.00
12,000.00	89.68	179.30	7,568.10	-4,383.21	176.55	4,386.66	0.00	0.00	0.00	0.00
12,100.00	89.68	179.30	7,568.66	-4,483.20	177.78	4,486.64	0.00	0.00	0.00	0.00
12,200.00	89.68	179.30	7,569.22	-4,583.19	179.01	4,586.62	0.00	0.00	0.00	0.00
12,300.00	89.68	179.30	7,569.79	-4,683.18	180.23	4,686.59	0.00	0.00	0.00	0.00
12,400.00	89.68	179.30	7,570.35	-4,783.18	181.46	4,786.57	0.00	0.00	0.00	0.00
12,500.00	89.68	179.30	7,570.91	-4,883.17	182.69	4,886.54	0.00	0.00	0.00	0.00
12,600.00	89.68	179.30	7,571.47	-4,983.16	183.91	4,986.52	0.00	0.00	0.00	0.00
12,700.00	89.68	179.30	7,572.03	-5,083.15	185.14	5,086.50	0.00	0.00	0.00	0.00
12,800.00	89.68	179.30	7,572.59	-5,183.14	186.37	5,186.47	0.00	0.00	0.00	0.00
12,900.00	89.68	179.30	7,573.15	-5,283.13	187.59	5,286.45	0.00	0.00	0.00	0.00
13,000.00	89.68	179.30	7,573.71	-5,383.12	188.82	5,386.42	0.00	0.00	0.00	0.00
13,100.00	89.68	179.30	7,574.27	-5,483.11	190.05	5,486.40	0.00	0.00	0.00	0.00
13,200.00	89.68	179.30	7,574.83	-5,583.10	191.27	5,586.38	0.00	0.00	0.00	0.00
13,300.00	89.68	179.30	7,575.39	-5,683.09	192.50	5,686.35	0.00	0.00	0.00	0.00
13,400.00	89.68	179.30	7,575.95	-5,783.08	193.73	5,786.33	0.00	0.00	0.00	0.00
13,408.72	89.68	179.30	7,576.00	-5,791.80	193.83	5,795.05	0.00	0.00	0.00	0.00
Niobrara B TL - Toe										
13,408.73	89.68	179.30	7,576.00	-5,791.81	193.83	5,795.05	0.00	0.00	0.00	0.00
Howard 3N-33HZ_BHL										

Plan Annotations

Measured Depth (ft)	Vertical Depth (ft)	Local Coordinates +N/-S (ft)	+E/-W (ft)	Comment
1,300.00	1,300.00	0.00	0.00	Begin Nudge @ 1300.00ft
1,467.27	1,467.17	4.61	1.61	End Nudge @ 1467.27ft
6,950.18	6,940.74	306.69	107.04	Begin Build @ 6950.18ft
7,300.00	7,274.35	221.44	114.73	Build Rate = 10.00/100ft
7,878.41	7,545.00	-262.00	126.00	End Build @ 7878.41ft
13,408.73	7,576.00	-5,791.81	193.83	Total Depth @ 13408.73ft

Vertical Section Information

Angle Type	Target	Azimuth (°)	Origin Type	Origin +N/-S (ft)	+E/-W (ft)	Start TVD (ft)
Target	Howard 3N-33HZ_BHL	178.08	Slot	0.00	0.00	0.00

Plan Report for Howard 3N-33HZ - Plan A Rev 0 Permit

Survey tool program

From (ft)	To (ft)	Survey/Plan	Survey Tool
0.00	7,878.41	Plan A Rev 0 Permit	MWD
7,878.41	13,408.73	Plan A Rev 0 Permit	MWD

Casing Details

Measured Depth (ft)	Vertical Depth (ft)	Name	Casing Diameter (")	Hole Diameter (")
7,878.41	7,545.00	7" Intermediate Casing	7	8-3/4

Formation Details

Measured Depth (ft)	Vertical Depth (ft)	Name	Lithology	Dip (°)	Dip Direction (°)
4,825.82	4,820.00	Sussex		0.00	
7,407.75	7,360.00	Sharon Springs		0.00	
7,431.30	7,377.00	Niobrara A		0.00	
7,729.74	7,525.00	Niobrara B		0.00	
7,878.41	7,545.00	Niobrara B TL - Heel		0.00	
13,408.72	7,576.00	Niobrara B TL - Toe		0.00	

Targets associated with this wellbore

Target Name	TVD (ft)	+N/-S (ft)	+E/-W (ft)	Shape
Howard 3N-33HZ_BHL	7,576.00	-5,791.81	193.83	Point
Howard 3N-33HZ_SHL	0.00	0.00	0.00	Point
Howard 3N-33HZ_CP	7,545.00	-262.00	126.00	Point

North Reference Sheet for Sec. 21-T1N-R67W - Howard 3N-33HZ - Plan A Rev 0

All data is in US Feet unless otherwise stated. Directions and Coordinates are relative to True North Reference.

Vertical Depths are relative to RKB=17 @ 5040.00ft (Drilling Rig). Northing and Easting are relative to Howard 3N-33HZ

Coordinate System is US State Plane 1983, Colorado Northern Zone using datum North American Datum 1983, ellipsoid GRS 1980

Projection method is Lambert Conformal Conic (2 parallel)

Central Meridian is -105.50°, Longitude Origin:0.000000°, Latitude Origin:40.783333°

False Easting: 3,000,000.00ft, False Northing: 1,000,000.00ft, Scale Reduction: 0.99996422

Grid Coordinates of Well: 1,254,409.46 ft N, 3,168,290.64 ft E

Geographical Coordinates of Well: 40° 01' 48.63" N, 104° 53' 56.48" W

Grid Convergence at Surface is: 0.39°

Based upon Minimum Curvature type calculations, at a Measured Depth of 13,408.73ft
the Bottom Hole Displacement is 5,795.05ft in the Direction of 178.08° (True).

Magnetic Convergence at surface is: -8.36° (19 December 2012, , BGGM2012)

