

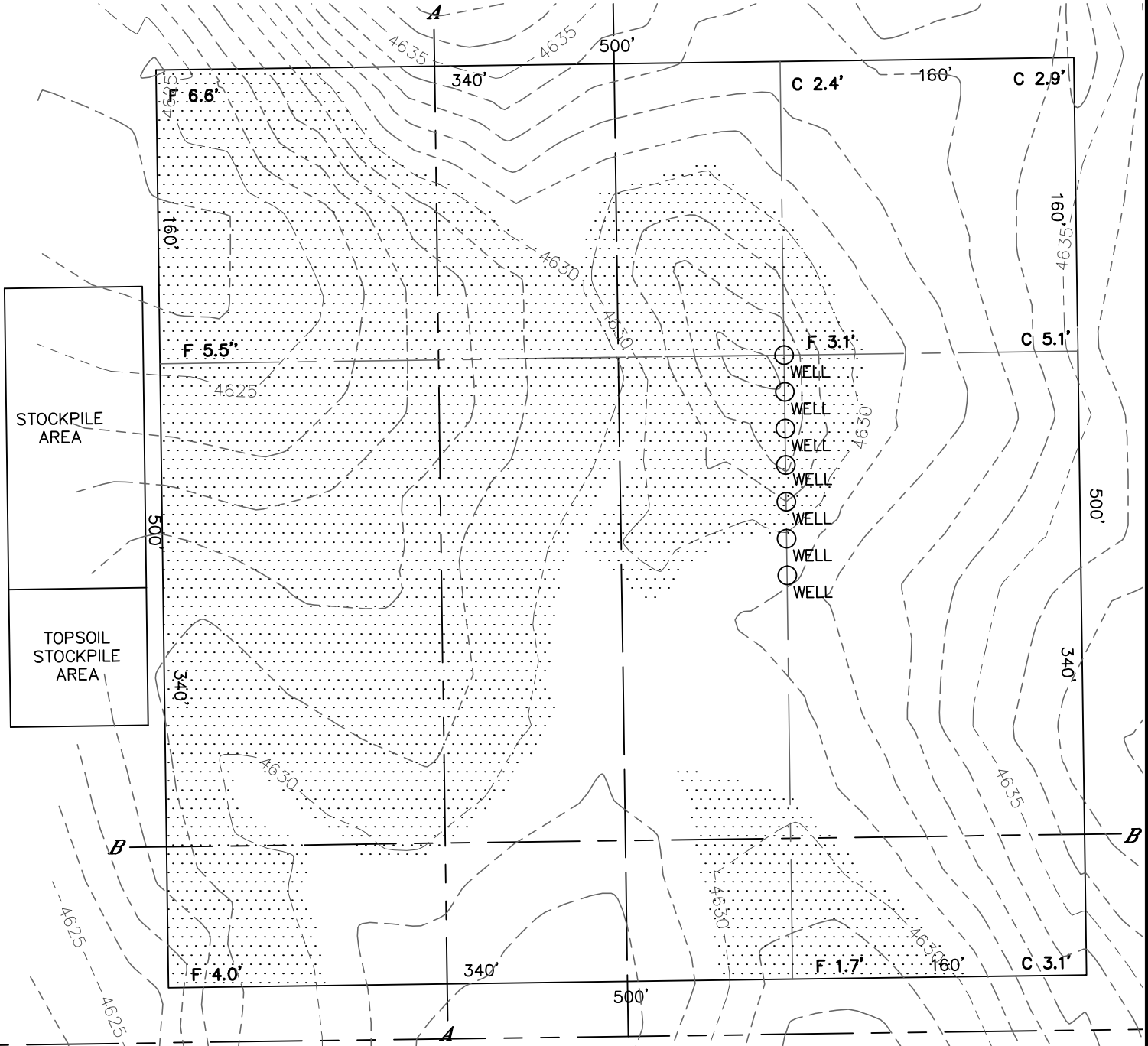


Lat40°, Inc. 1635 Foxtrail Drive, Suite 325 Loveland, CO 970-776-3321

CUT & FILL DIAGRAM

STATE ANTELOPE T-28 PAD

SECTION: 28
TOWNSHIP: 5N
RANGE: 62W



OPERATOR: BONANZA CREEK ENERGY, INC.
LOCATION: 370' FSL, 1212' FEL
EXISTING ELEV=4627.2'
PROPOSED ELEV=4630.3'
DISTURBANCE= 6.0 ACRES

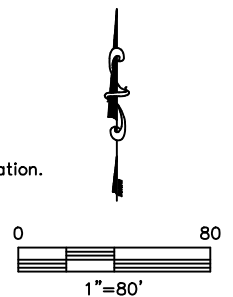
ESTIMATED EARTHWORK:
TOPSOIL= 9,680 CY
CUT= 9,718 CY
FILL= 9,708 CY
STOCKPILE:
EXCESS= 10 CY

NOTE:

- 1) Ground elevations are based on an observed GPS elevation (NAVD 1988 DATUM).
- 2) No allowance has been made for soil expansion or compaction
- 3) Proposed elevation does not account for top soil removal.
- 4) Top soil volume assumes 12" depth across entire location.
- 5) Fill slopes 2:1
- 6) Cut slopes 1.5:1

LEGEND

EX. CONTOUR	---
PRO. CONTOUR	---
FILL AREA	



DATE: 12/14/2012
PROJECT#: 2012071

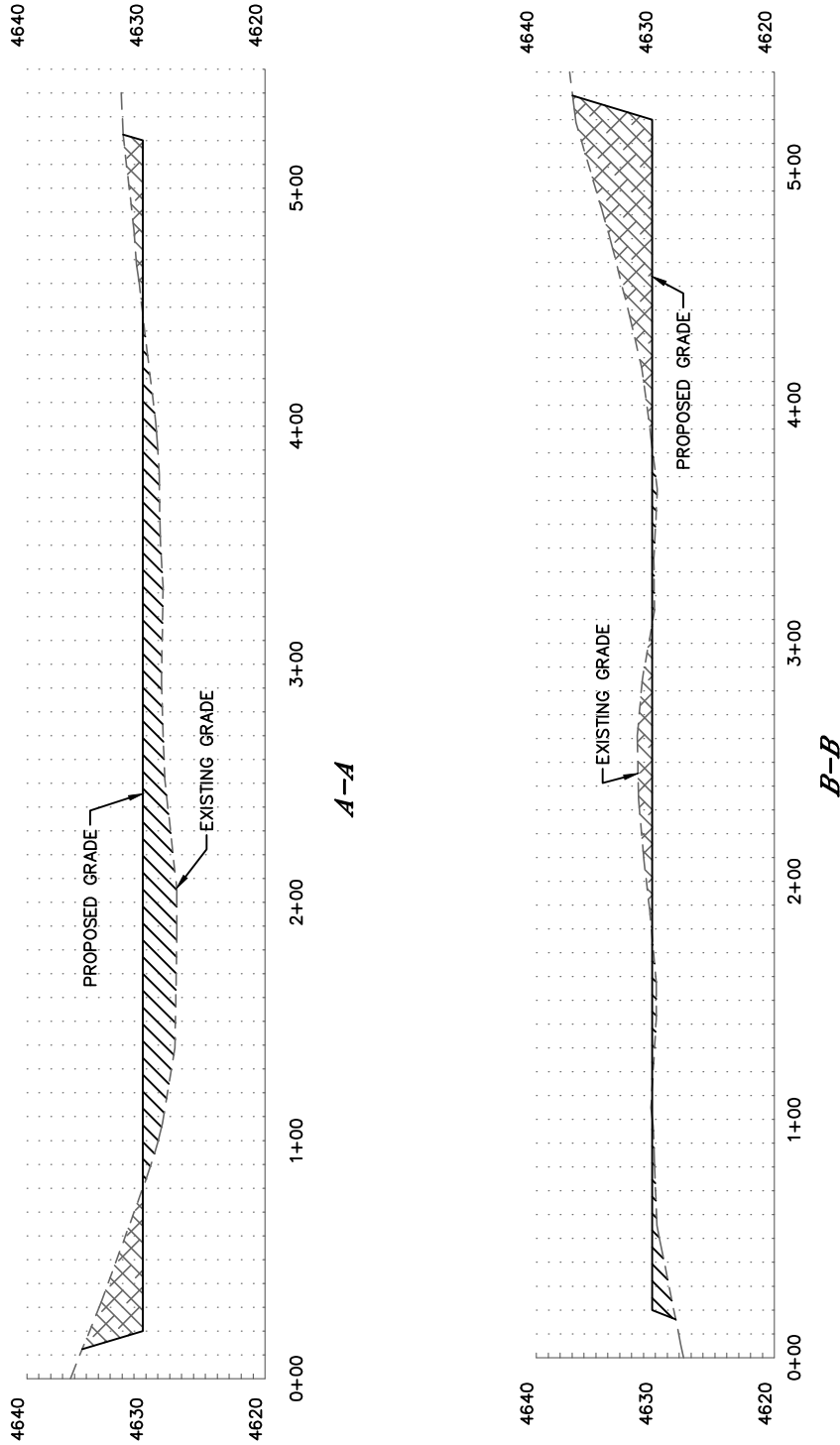


Lat40°, Inc. 1635 Foxtrail Drive, Suite 325 Loveland, CO 970-776-3321

CROSS SECTION DIAGRAM

STATE ANTELOPE T-28 PAD

SECTION: 28
TOWNSHIP: 5N
RANGE: 62W



HORIZONTAL SCALE: 1"=80', VERTICAL SCALE: 1"=20'