

WELL LOCATION PLAT
T9N, R60W, 6th P.M.

NOBLE ENERGY, INC.

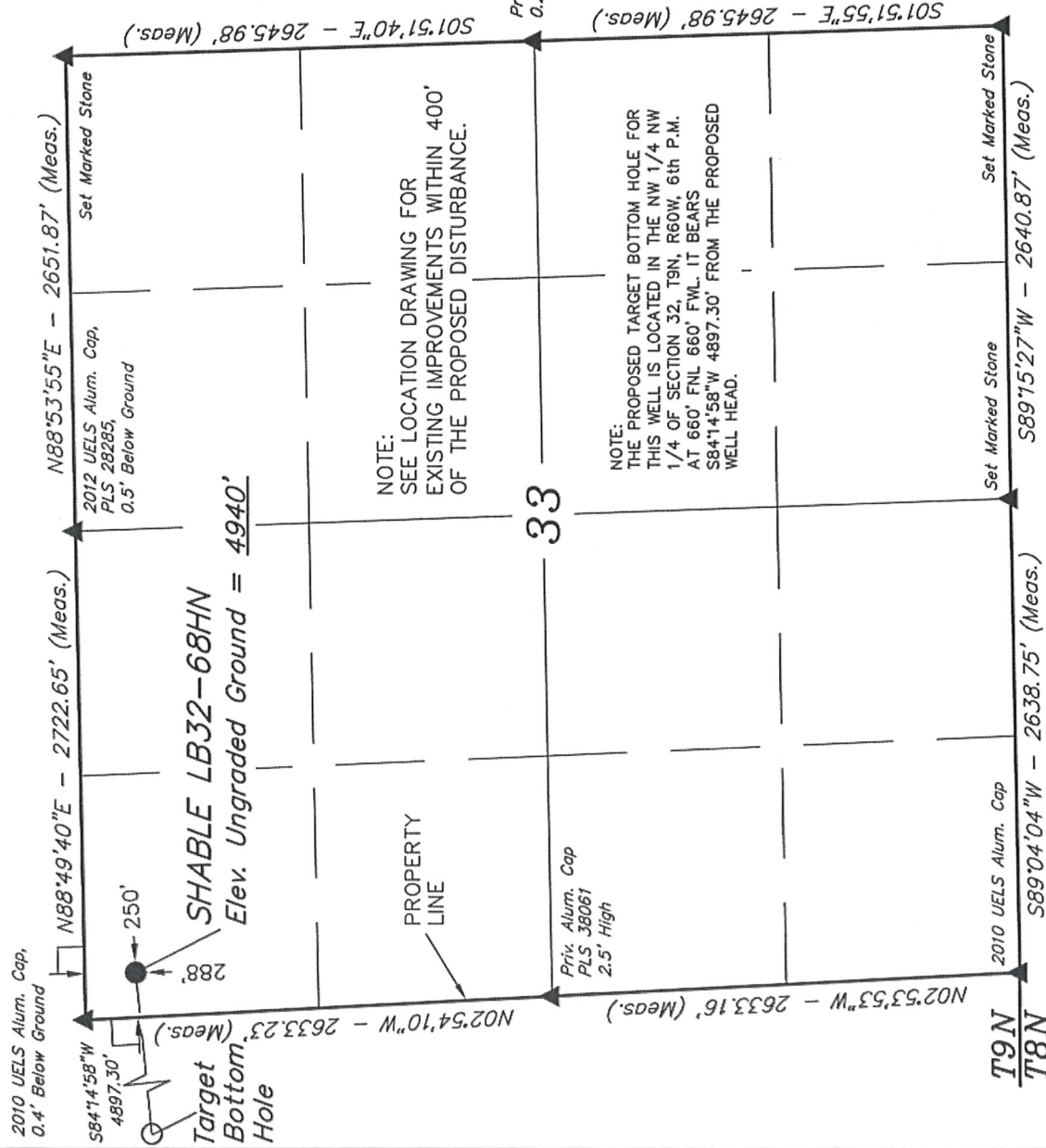
Well location, SHABLE LB32-68HN (SURFACE LOCATION), located as shown in the NW 1/4 NW 1/4 of Section 33, T9N, R60W, 6th P.M., Weld County, Colorado.

BASIS OF ELEVATION

SPOT ELEVATION LOCATED AT THE NORTHEAST CORNER OF SECTION 2, T9N, R61W, 6th P.M., TAKEN FROM THE GROVER SOUTH, QUADRANGLE, COLORADO, WELD COUNTY, 7.5 MINUTE QUAD (TOPOGRAPHICAL MAP) PUBLISHED BY THE UNITED STATES DEPARTMENT OF THE INTERIOR, GEOLOGICAL SURVEY. SAID ELEVATION IS MARKED AS BEING 5043 FEET.

BASIS OF BEARINGS

BASIS OF BEARINGS IS A G.P.S. OBSERVATION.



LEGEND:

- = 90° SYMBOL
- = PROPOSED WELL HEAD.
- ▲ = SECTION CORNERS LOCATED.

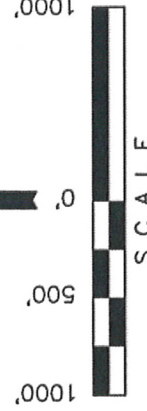
SHEET 1 OF 2

NAD 83 (SURFACE LOCATION)
LATITUDE = 40°42'44.64" (40.712400)
LONGITUDE = 104°06'23.07" (104.106408)

PDOP = 3.1

UTAH ENGINEERING & LAND SURVEYING
85 SOUTH 200 EAST - VERNAL, UTAH 84078
(435) 789-1017

SCALE 1" = 1000'	DATE SURVEYED: 06-01-12	DATE DRAWN: 08-02-12
PARTY DAVE SWANSON C.T. J.M.H.	REFERENCES G.L.O. PLAT	
WEATHER WARM	FILE	
		NOBLE ENERGY, INC.



CERTIFICATE

THIS IS TO CERTIFY THAT THE ABOVE PLAT WAS PREPARED FROM FIELD NOTES OF ACTUAL SURVEYS MADE BY ME OR UNDER MY SUPERVISION AND THAT THE SAME ARE TRUE AND CORRECT TO THE BEST OF MY KNOWLEDGE AND BELIEF.

REGISTERED LAND SURVEYOR
REGISTRATION NO. 1617492
STATE OF COLORADO
09-18-12

WELL LOCATION PLAT

T9N, R60W, 6th P.M.

NOBLE ENERGY, INC.

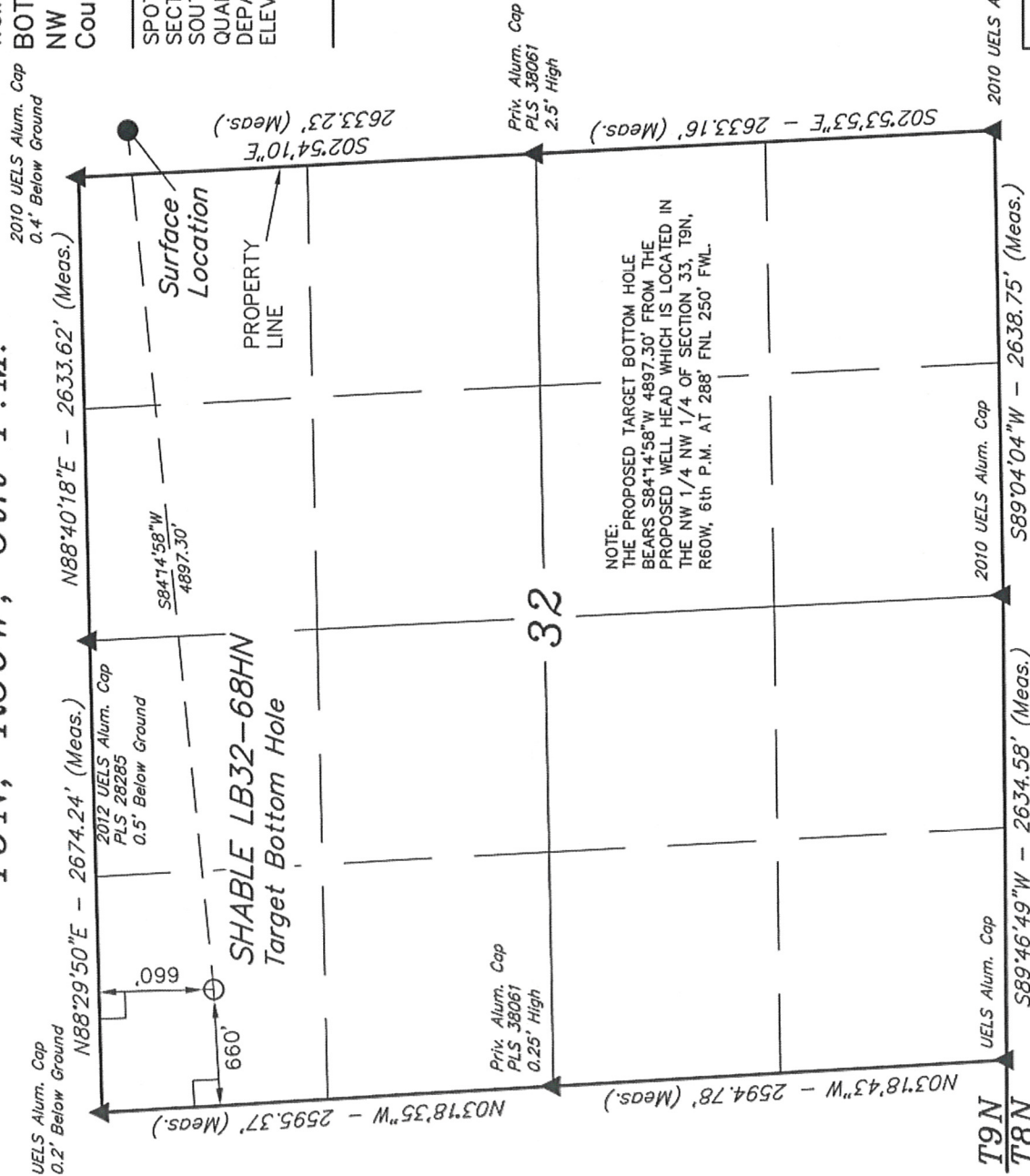
Well location, SHABLE LB32-68HN (TARGET BOTTOM HOLE), located as shown in the NW 1/4 NW 1/4 of Section 32, T9N, R60W, 6th P.M., Weld County, Colorado.

BASIS OF ELEVATION

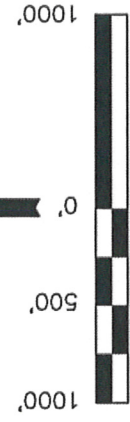
SPOT ELEVATION LOCATED AT THE NORTHEAST CORNER OF SECTION 2, T9N, R61W, 6th P.M., TAKEN FROM THE GROVER SOUTH, QUADRANGLE, COLORADO, WELD COUNTY, 7.5 MINUTE QUAD (TOPOGRAPHICAL MAP) PUBLISHED BY THE UNITED STATES DEPARTMENT OF THE INTERIOR, GEOLOGICAL SURVEY. SAID ELEVATION IS MARKED AS BEING 5043 FEET.

BASIS OF BEARINGS

BASIS OF BEARINGS IS A G.P.S. OBSERVATION.



NOTE:
THE PROPOSED TARGET BOTTOM HOLE BEARS S84°14'58"W 4897.30' FROM THE PROPOSED WELL HEAD WHICH IS LOCATED IN THE NW 1/4 NW 1/4 OF SECTION 33, T9N, R60W, 6th P.M. AT 288' FNL 250' FWL.



CERTIFICATE

THIS IS TO CERTIFY THAT THE ABOVE PLAT WAS PREPARED FROM FIELD NOTES OF ACTUAL SURVEYS MADE BY ME OR UNDER MY SUPERVISION AND THAT THE SAME ARE TRUE AND CORRECT TO THE BEST OF MY KNOWLEDGE AND BELIEF.

REGISTERED LAND SURVEYOR
REGISTRATION NO. 17492
STATE OF COLORADO 09-18-12

UNTAH ENGINEERING & LAND SURVEYING	
85 SOUTH 200 EAST - VERNAL, UTAH 84078	
(435) 789-1017	
SCALE 1" = 1000'	DATE SURVEYED: 06-01-12
PARTY DAVE SWANSON C.T. J.M.H.	REFERENCES G.L.O. PLAT
WEATHER WARM	FILE

FEATURE TABLE		
EXISTING FEATURE	DIRECTION	LENGTH
PROPERTY LINE	WEST	250'

- LEGEND:
- 90° SYMBOL
 - PROPOSED WELL HEAD.
 - SECTION CORNERS LOCATED.

NAD 83 (TARGET BOTTOM HOLE)
LATITUDE = 40°42'39.81" (40.711058)
LONGITUDE = 104°07'26.33" (104.123981)

NOBLE ENERGY, INC.

Well location, SHABLE LB32-68HN (SURFACE LOCATION), located as shown in the NW 1/4 NW 1/4 of Section 33, T9N, R60W, 6th P.M., Weld County, Colorado.



NOTE:
THE PROPOSED TARGET BOTTOM HOLE FOR
THIS WELL IS LOCATED IN THE NW 1/4 NW
1/4 OF SECTION 32, T9N, R60W, 6th P.M.
AT 660' FNL. IT BEARS
S84°14'58"W 4897.30' FROM THE PROPOSED
WELL HEAD.

LEGEND:

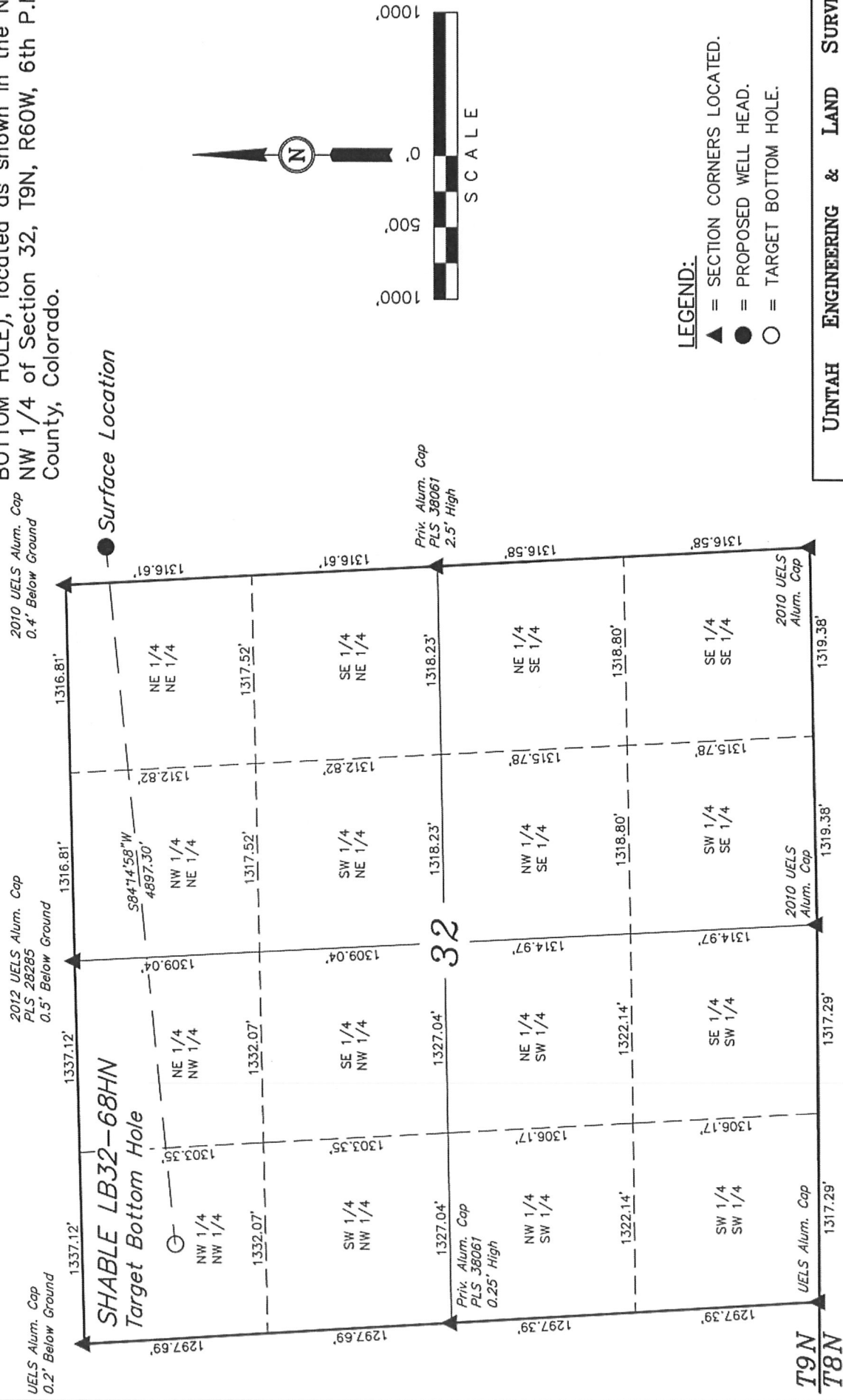
- ▲ = SECTION CORNERS LOCATED.
● = PROPOSED WELL HEAD.
○ = TARGET BOTTOM HOLE.

UNTAH ENGINEERING & LAND SURVEYING
85 SOUTH 200 EAST - VERNAL, UTAH 84078

SCALE	1" = 1000'	DATE SURVEYED:	DATE DRAWN:
PARTY	DAVE SWANSON	06-01-12	09-10-12
WEATHER	C.T. J.M.H.	REFERENCES	
		G.L.O. PLAT	
		FILE	
	WARM		NOBLE ENERGY INC.

NOBLE ENERGY, INC.

Well location, SHABLE LB32-68HN (TARGET BOTTOM HOLE), located as shown in the NW 1/4 NW 1/4 of Section 32, T9N, R60W, 6th P.M., Weld County, Colorado.



NOTE:
THE PROPOSED TARGET BOTTOM HOLE
BEARS S84°14'58"W 4897.30' FROM THE
PROPOSED WELL HEAD WHICH IS LOCATED IN
THE NW 1/4 NW 1/4 OF SECTION 33, T9N,
R60W, 6th P.M. AT 288' FNL 250' FWL.

NO WELLS WITHIN SECTIONS

SHEET 2 OF 2

UTAH ENGINEERING & LAND SURVEYING 85 SOUTH 200 EAST - VERNAL, UTAH 84078 (435) 789-1017			
SCALE 1" = 1000'	DATE SURVEYED: 06-01-12	DATE DRAWN: 09-10-12	
PARTY DAVE SWANSON C.T. J.M.H.	REFERENCES G.L.O. PLAT		
WEATHER WARM	FILE	NOBLE ENERGY, INC.	