

T10N, R58W, 6th P.M.

WHITTING OIL & GAS CORP.

2010 UELS Alum. Cap,
0.5' Below Ground
Lat: 40.816892°
Long: 103.860906°

2012 Alum. Cap,
PLS 28285, 0.2' High
Lat: 40.816800°
Long: 103.851339°

2010 UELS Alum. Cap,
Flush W/Ground
Lat: 40.816906°
Long: 103.841850°

Well location, RAZOR #27-3424H, (SURFACE LOCATION), located as shown in the NE 1/4 SW 1/4 of Section 27, T10N, R58W, 6th P.M., Weld County, Colorado.

BASIS OF ELEVATION

SPOT ELEVATION LOCATED AT THE NORTHEAST CORNER OF SECTION 15, 19N, R58W, 6th P.M. TAKEN FROM THE GATEHOOK SPRING, QUADRANGLE, COLORADO, WELD COUNTY, 7.5 MINUTE QUAD (TOPOGRAPHIC MAP) PUBLISHED BY THE UNITED STATES DEPARTMENT OF THE INTERIOR, GEOLOGICAL SURVEY. SAID ELEVATION IS MARKED AS BEING 4679 FEET.

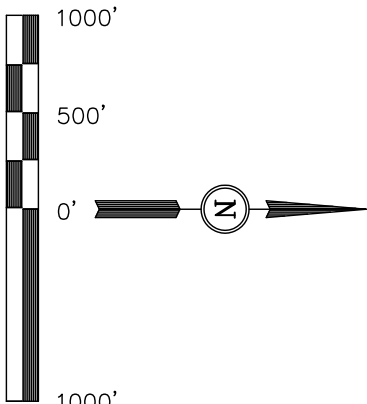
BASIS OF BEARINGS

BASIS OF BEARINGS IS A G.P.S. OBSERVATION.

NOTE:
THE PROPOSED BOTTOM HOLE FOR THIS WELL IS LOCATED IN THE SE 1/4 SW 1/4 OF SECTION 34, T10N, R58W, 6th P.M. AT 660' FSL 1980' FWL. IT BEARS S00°38'58"E 6956.47' FROM THE PROPOSED WELL HEAD.

NOTE:
SEE ADDENDUM TO LEGAL PLAT FOR EXISTING IMPROVEMENTS WITHIN 400' OF THE PROPOSED DISTURBANCE.

RAZOR #27-3424H
Elev. Ungraded Ground = 4751'



CERTIFICATE

THIS IS TO CERTIFY THAT THE ABOVE PLAT WAS PREPARED FROM FIELD NOTES OF ACTUAL SURVEYS MADE BY ME OR UNDER MY SUPERVISION AND THAT THE SAME ARE TRUE AND CORRECT TO THE BEST OF MY KNOWLEDGE AND BELIEF.

REGISTERED LAND SURVEYOR
REGISTRATION NO. 14922
STATE OF COLORADO

REVISED: 05-10-12

UNTANH ENGINEERING & LAND SURVEYING
85 SOUTH 200 EAST - VERNAL, UTAH 84078
(435) 789-1017

SCALE 1" = 1000'
DATE SURVEYED: 05-08-12
DATE DRAWN: 05-14-12

PARTY D.L.S. C.T. W.M.
REFERENCES G.L.O. PLAT

WEATHER COOL
FILE WHITTING OIL & GAS CORP.

LEGEND:

- 90° SYMBOL
- PROPOSED WELL HEAD.
- SECTION CORNERS LOCATED.

PDOP = 1.4

NAD 83 (SURFACE LOCATION)	
LATITUDE = 40°48'30.94"	(40.808594)
LONGITUDE = 103°51'12.95"	(103.853597)
NAD 27 (SURFACE LOCATION)	
LATITUDE = 40°48'30.99"	(40.808608)
LONGITUDE = 103°51'11.14"	(103.853094)

T10N, R58W, 6th P.M.

WHITTING OIL & GAS CORP.

2010 UELS Alum. Cap,
0.5' Below Ground
Lat: 40.802136°
Long: 103.860622°

Surface Location

2012 Alum. Cap,
PLS 28285,
0.1' Below Ground,
Lat: 40.802256°
Long: 103.851081°

2010 UELS Alum. Cap,
Flush W/Ground
E/W Fence
Lat: 40.802375°
Long: 103.841542°

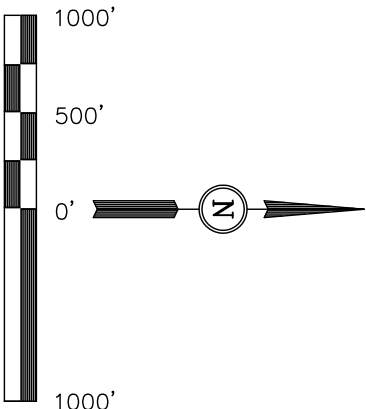
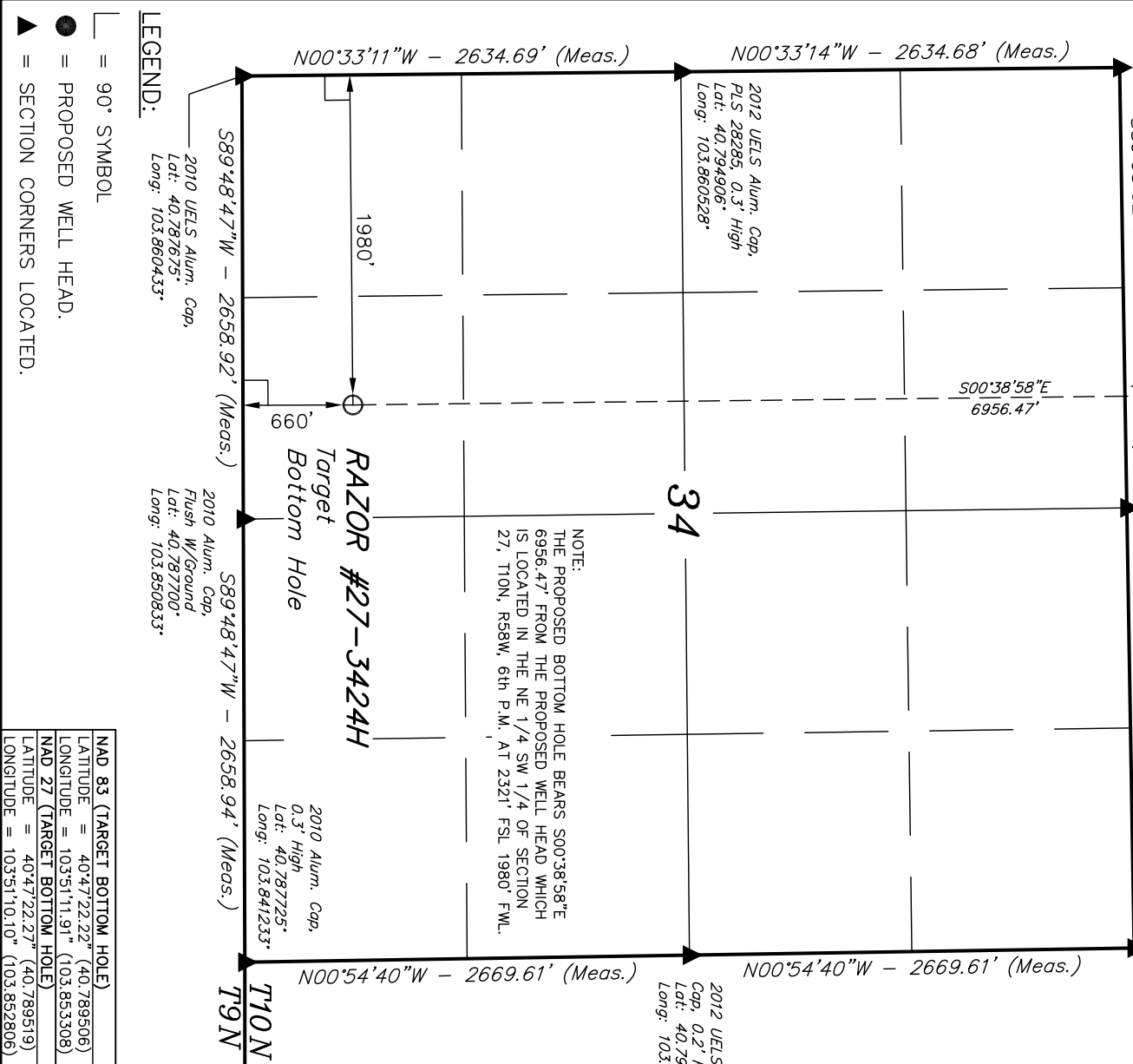
Well location, RAZOR #27-3424H, (TARGET BOTTOM HOLE), located as shown in the SE 1/4 SW 1/4 of Section 34, T10N, R58W, 6th P.M., Weld County, Colorado.

BASIS OF ELEVATION

SPOT ELEVATION LOCATED AT THE NORTHEAST CORNER OF SECTION 15, T9N, R58W, 6th P.M. TAKEN FROM THE GATEHOOK SPRING, QUADRANGLE, COLORADO, WELD COUNTY, 7.5 MINUTE QUAD (TOPOGRAPHIC MAP) PUBLISHED BY THE UNITED STATES DEPARTMENT OF THE INTERIOR, GEOLOGICAL SURVEY. SAID ELEVATION IS MARKED AS BEING 4679 FEET.

BASIS OF BEARINGS

BASIS OF BEARINGS IS A C.P.S. OBSERVATION.



THIS IS TO CERTIFY THAT THE ABOVE PLAT WAS PREPARED FROM FIELD NOTES OF ACTUAL SURVEYS MADE BY ME OR UNDER MY SUPERVISION AND THAT THE SAME ARE TRUE AND CORRECT TO THE BEST OF MY KNOWLEDGE AND BELIEF.

REGISTERED LAND SURVEYOR
REGISTRATION NO. 14922
STATE OF COLORADO
05-23-12

CERTIFICATE

UINTAH ENGINEERING & LAND SURVEYING
85 SOUTH 200 EAST - VERNAL, UTAH 84078
(435) 789-1017

SCALE		DATE SURVEYED:	DATE DRAWN:
1" = 1000'		05-08-12	05-14-12
PARTY	REFERENCES		
D.L.S. C.T. W.M.	G.L.O. PLAT		
WEATHER	FILE		
COOL	WHITTING OIL & GAS CORP.		

LEGEND:

- 90° SYMBOL
- PROPOSED WELL HEAD.
- SECTION CORNERS LOCATED.