

**SYNERGY RESOURCES CORPORATION
20203 HIGHWAY 60
PLATTEVILLE, Colorado**

SRC Pratt 2KD

Ensign 226

Post Job Summary **Cement Surface Casing**

Date Prepared: 12/19/2012
Version: 1

Service Supervisor: CLEMONS, WILLIAM

Submitted by: KENNEDY, HERRON

HALLIBURTON

Wellbore Geometry

Job Tubulars					MD		Shoe Joint Length ft
Type	Description	Size in	ID in	Wt lbm/ft	Top ft	Bottom ft	
Open Hole Section	Open Hole		12.250		0.00	615.00	
Casing	Surface Casing	8.63	8.097	24.00	0.00	615.00	44.00

HALLIBURTON

Pumping Schedule

Stage /Plug #	Fluid #	Fluid Type	Fluid Name	Surface Density lbm/gal	Surface Volume	Downhole Volume
1	1	Spacer	Fresh Water Spacer	8.33	10.0 bbl	10.0 bbl
1	2	Cement Slurry	SwiftCem B2	13.40	175.0 sacks	175.0 sacks

Fluids Pumped

Stage/Plug # 1 Fluid 1: Fresh Water Spacer

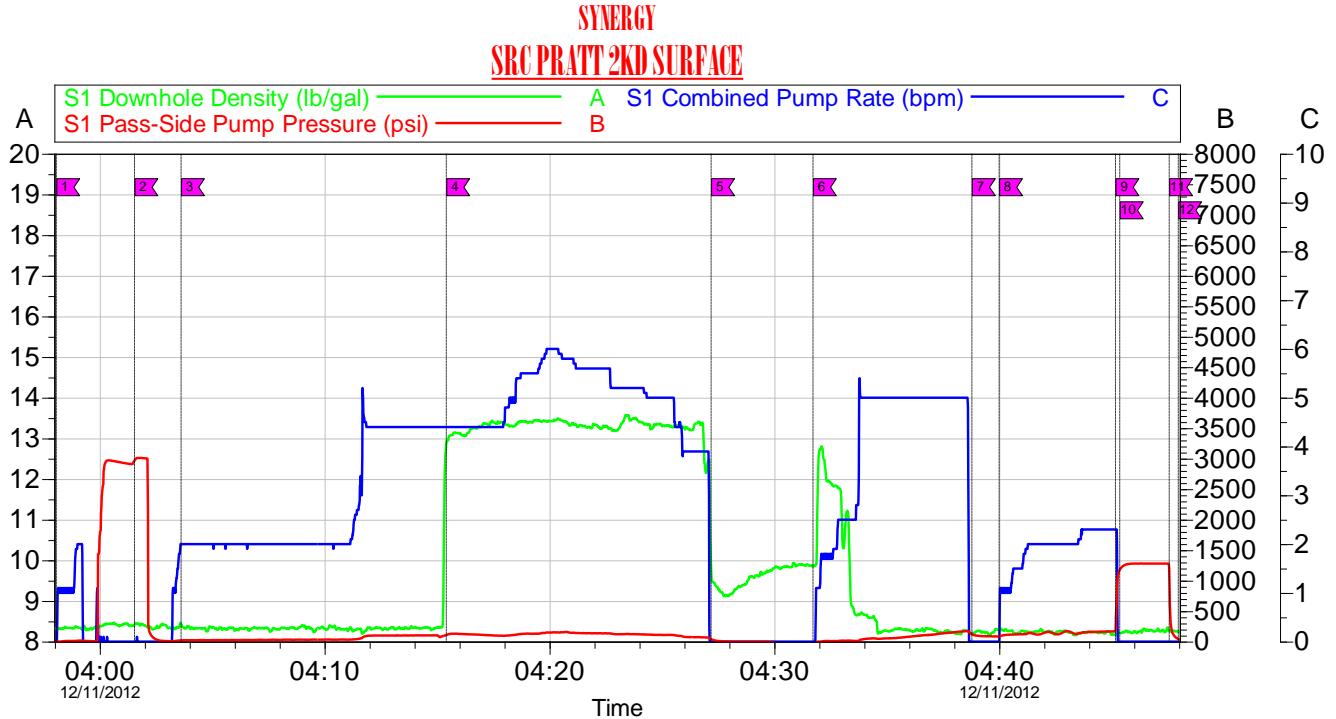
Fluid Density: 8.33 lbm/gal
Fluid Volume: 10.00 bbl

Stage/Plug # 1 Fluid 2: SwiftCem B2
SWIFTCER (TM) SYSTEM

Fluid Weight: 13.40 lbm/gal
Slurry Yield: 1.84 ft³/sack
Total Mixing Fluid: 9.74 Gal
Surface Volume: 175.0 sacks
Sacks: 175.0 sacks
Calculated Fill: 650.00 ft
Calculated Top of Fluid: 0.00 ft

HALLIBURTON

Data Acquisition



Local Event Log											
Intersection						Intersection					
			SDD	SPPP	SCPR				SDD	SPPP	SCPR
1	START JOB / FILL LINES	03:58:04	8.330	2.000	0.000	2	PRESSURE TEST HES IRON	04:01:32	8.412	2971	0.000
3	PUMP WATER SPACER	04:03:37	8.435	21.49	2.000	4	PUMP CEMENT	04:15:24	12.87	110.2	4.400
5	SHUTDOWN / DROP TOP PLUG	04:27:11	9.825	42.64	0.000	6	BEGIN H2O DISPLACEMENT	04:31:43	9.855	-2.000	0.000
7	SHUTDOWN	04:38:47	8.220	121.9	0.000	8	RESUME DISPLACEMENT	04:40:00	8.300	86.00	0.000
9	BUMP PLUG	04:45:10	8.170	184.6	2.300	10	SHUTDOWN / HOLD PRESSURE	04:45:22	8.210	1180	0.000
11	CHECK FLOATS	04:47:33	8.260	1188	0.000	12	END JOB	04:47:58	8.254	44.40	0.000

Customer: SYNERGY	Job Date: 11-Dec-2012	Sales Order #: 900065610
Well Description: SRC PRATT 2KD	JOB TYPE: SURFACE	SUPERVISOR: BILL CLEMONS

OptiCem v6.4.21
 11-Dec-12 05:18

HALLIBURTON

Service Supervisor Reports

Job Log

Date/Time	Chart #	Activity Code	Pump Rate	Cum Vol	Pump		Pressure (psig)	Comments
12/11/2012 03:15		Pre-Job Safety Meeting						DISCUSSED SAFETY AND JOB PROCEDURE WITH HES CREW, RIG CREW, AND CoMan
12/11/2012 03:58	1	Start Job						FILLED LINES WITH H2O
12/11/2012 04:01	2	Pressure Test						PRESSURE TEST 300 PER CoMan
12/11/2012 04:03	3	Pump Spacer						20 BBS FRESH H2O & 10 SOAPY H2O
12/11/2012 04:15	4	Pump Cement						MIX & PUMP 175 SACKS OF SWIFCEM @ 13.4 PPG, 1.84 YIELD, 9.74 GAK/SK
12/11/2012 04:27	5	Shutdown						DROP TOP PLUG
12/11/2012 04:31	6	Pump Displacement						DISPLACER WITH FRESH H2O
12/11/2012 04:38	7	Shutdown						SHUTDOWN TO SWAP RIG TO PIT
12/11/2012 04:40	8	Resume						RESUME H2O DISPLACEMENT
12/11/2012 04:45	9	Bump Plug						PRESSURE UP PER CoMan
12/11/2012 04:45	10	Shutdown						HOLD PRESSURE FOR 3 MINUTES PER CoMan
12/11/2012 04:47	11	Check Floats						FLOATS HELD WITH 1 BBL BACK
12/11/2012 04:47	12	End Job						FULL RETURNS THROUGHOUT JOB, 8 BBLs OF CEMENT TO SURFACED, JOB SUCCESSFULLY COMPLETED

The Road to Excellence Starts with Safety

Sold To #: 359915	Ship To #: 2968084	Quote #:	Sales Order #: 900065610
Customer: SYNERGY RESOURCES CORPORATION		Customer Rep: Montoya, Chris	
Well Name: SRC Pratt		Well #: 2KD	API/UWI #: 05-123-36387
Field:	City (SAP): JOHNSTOWN	County/Parish:	State: Saskatchewan
Lat: N 40.34 deg. OR N 40 deg. 20 min. 23.46 secs.		Long: W 104.975 deg. OR W -105 deg. 1 min. 28.643 secs.	
Contractor: Ensign		Rig/Platform Name/Num: 226	
Job Purpose: Cement Surface Casing			
Well Type: Development Well		Job Type: Cement Surface Casing	
Sales Person: AARON, WESLEY	Srv Supervisor: CLEMONS, WILLIAM		MBU ID Emp #: 407973

Job Personnel

HES Emp Name	Exp Hrs	Emp #	HES Emp Name	Exp Hrs	Emp #	HES Emp Name	Exp Hrs	Emp #
BANUELOS, GUADALUPE	0.0	372277	CLEMONS, WILLIAM Edward	0.0	407973	DIRKS, RICHARD E	0.0	485940

Equipment

HES Unit #	Distance-1 way	HES Unit #	Distance-1 way	HES Unit #	Distance-1 way	HES Unit #	Distance-1 way
11036295C	33 mile	11142999	33 mile	11542778	33 mile		

Job Hours

Date	On Location Hours	Operating Hours	Date	On Location Hours	Operating Hours	Date	On Location Hours	Operating Hours

TOTAL	Total is the sum of each column separately							
-------	--	--	--	--	--	--	--	--

Job

Formation Name	Formation Depth (MD)	Top	Bottom	Form Type	Job depth MD	Job Depth TVD	Water Depth	Perforation Depth (MD)	From	To	Called Out	Date	Time	Time Zone
				BHST	615. ft	615. ft	4. ft					10 - Dec - 2012	07:00	MST
											On Location	10 - Dec - 2012	00:00	MST
											Job Started	11 - Dec - 2012	02:00	MST
											Job Completed	11 - Dec - 2012	05:00	MST
											Departed Loc	11 - Dec - 2012	07:00	MST

Well Data

Description	New / Used	Max pressure psig	Size in	ID in	Weight lbm/ft	Thread	Grade	Top MD ft	Bottom MD ft	Top TVD ft	Bottom TVD ft
Open Hole				12.25				.	615.	.	.
Surface Casing	Mixed		8.625	8.097	24.			.	615.	.	.

Fluid Data

Stage/Plug #: 1											
Fluid #	Stage Type	Fluid Name	Qty	Qty uom	Mixing Density lbm/gal	Yield ft ³ /sk	Mix Fluid Gal/sk	Rate bbl/min	Total Mix Fluid Gal/sk		

HALLIBURTON

Cementing Job Summary

1	Fresh Water Spacer		10.00	bbl	8.33	.0	.0	.0	
2	SwiftCem B2	SWIFTCEM (TM) SYSTEM (452990)	175.0	sacks	13.4	1.84	9.74		9.74
9.74 Gal		FRESH WATER							
<i>The Information Stated Herein Is Correct</i>				<i>Customer Representative Signature</i>					

