

**SYNERGY RESOURCES CORPORATION
20203 HIGHWAY 60
PLATTEVILLE, Colorado**

SRC Pratt 13-2D

Ensign 226

Post Job Summary **Cement Surface Casing**

Date Prepared: 12/5/2012
Version: 1

Service Supervisor: SNYDER, JONATHAN

Submitted by: KENNEDY, HERRON

HALLIBURTON

HALLIBURTON

Wellbore Geometry

Job Tubulars					MD		Shoe Joint Length ft
Type	Description	Size in	ID in	Wt lbm/ft	Top ft	Bottom ft	
Open Hole Section	Open Hole		12.250		0.00	615.00	
Casing	Surface Casing	8.63	8.097	24.00	0.00	606.00	44.00

Pumping Schedule

Stage /Plug #	Fluid #	Fluid Type	Fluid Name	Surface Density lbm/gal	Surface Volume	Downhole Volume
1	1	Spacer	Fresh Water Spacer	8.33	30.0 bbl	30.0 bbl
1	2	Cement Slurry	SwiftCem B2	13.40	175.0 sacks	175.0 sacks

Fluids Pumped

Stage/Plug # 1 Fluid 1: Fresh Water Spacer
DUMMY MUD / FLUSH / SPACER SBC MATERIAL

Fluid Density: 8.33 lbm/gal
Fluid Volume: 30.00 bbl

Stage/Plug # 1 Fluid 2: SwiftCem B2
SWIFTCM (TM) SYSTEM

Fluid Weight: 13.40 lbm/gal
Slurry Yield: 1.84 ft³/sack
Total Mixing Fluid: 9.74 Gal
Surface Volume: 175.0 sacks
Sacks: 175.0 sacks
Calculated Fill: 650.00 ft
Calculated Top of Fluid: 0.00 ft

HALLIBURTON

Service Supervisor Reports

Job Log

Date/Time	Chart #	Activity Code	Pump Rate	Cum Vol	Pump		Pressure (psig)	Comments
11/29/2012 23:00		Arrive at Location from Service Center						ARRIVED AND CONDUCTED A HAZARD HUNT AND FOUND NO HAZARDS THAT CONFLICT WITH US RIGGING UP EQUIPMENT.
11/30/2012 00:30		Pre-Job Safety Meeting						HELD SAFETY MEETING WITH ALL EMPLOYEES AND ALL THIRD PARTY PERSONEL PRIOR TO PUMPING THE CEMENT JOB.
11/30/2012 01:00		Start Job						
11/30/2012 01:04		Test Lines						PRESSURE TEST LINES TO 2590 PSI
11/30/2012 01:06		Pump Spacer 1	4	30			57.3	W/ RIG WATER, FIRST 20 BBLS WERE FRESH WATER AND THEN THE LAST 10 BBLS WE ADDED RED DYE AS A MARKER FOR WHEN CEMENT COMES BACK TO SURFACE.
11/30/2012 01:14		Pump Cement	4.5	57			62.3	175 SKS SWIFTCEN B2 MIXED @ 13.4 PPG W/ RIG WATER
11/30/2012 01:32		Shutdown						
11/30/2012 01:34		Drop Top Plug						PLUG PRELOADED, DROPPED PLUG PRIOR TO PUMPING DISPLACEMENT
11/30/2012 01:34		Pump Displacement	4	36			132.3	W/ RIG WATER, FIRST 10 BBLS WE WASHED UP THROUGH OUR MIXING TUBS TO CLEAN THEM, THEN THE REST WAS FRESH WATER
11/30/2012 01:46		Bump Plug	3				179.3	WE GOT CEMENT BACK TO SURFACE WITH 32 BBLS OF DISPLACEMENT GONE, SO WE GOT 4 BBLS BACK TO SURFACE.
11/30/2012 01:48		Check Floats					892.3	FLOATS HELD, GOOD RETURNS THROUGHOUT THE JOB, WE GOT 0.5 BBLS OF WATER BACK IN OUR DISPLACEMENT TANKS WHEN WE CHECKED FLOATS.
11/30/2012 01:54		End Job						
11/30/2012 02:00		Pre-Rig Down Safety Meeting						HELD SAFETY MEETING WITH ALL EMPLOYEES PRIOR TO RIGGING DOWN AND DISCUSSED ALL HAZARDS WHILE RIGGING DOWN EQUIPMENT.
11/30/2012 03:00		Depart Location for Service Center or Other Site						HELD SAFETY MEETING PRIOR TO LEAVING LOCATION AND DISCUSSED ALL POTENTIAL HAZARDS WHILE DRIVING BACK TO THE SERVICE CENTER.

The Road to Excellence Starts with Safety

Sold To #: 359915		Ship To #: 2966097		Quote #:		Sales Order #: 900038640	
Customer: SYNERGY RESOURCES CORPORATION				Customer Rep: Montoya, Chris			
Well Name: SRC Pratt			Well #: 13-2D		API/UWI #: 05-123-33222		
Field: WATTENBERG		City (SAP): JOHNSTOWN		County/Parish: Weld		State: Colorado	
Lat: N 40.34 deg. OR N 40 deg. 20 min. 23.456 secs.				Long: W 104.975 deg. OR W -105 deg. 1 min. 29.158 secs.			
Contractor: Ensign			Rig/Platform Name/Num: 226				
Job Purpose: Cement Surface Casing							
Well Type: Development Well				Job Type: Cement Surface Casing			
Sales Person: AARON, WESLEY			Srvc Supervisor: SNYDER, JONATHAN			MBU ID Emp #: 435616	

Job Personnel

HES Emp Name	Exp Hrs	Emp #	HES Emp Name	Exp Hrs	Emp #	HES Emp Name	Exp Hrs	Emp #
HALE, ROBERT E	4.0	470588	LANGE, TIMOTHY Paul	4.0	520811	SNYDER, JONATHAN Leroy	4.0	435616

Equipment

HES Unit #	Distance-1 way	HES Unit #	Distance-1 way	HES Unit #	Distance-1 way	HES Unit #	Distance-1 way
10982754C	30 mile	11362287C	30 mile	11527037	30 mile		

Job Hours

Date	On Location Hours	Operating Hours	Date	On Location Hours	Operating Hours	Date	On Location Hours	Operating Hours

TOTAL	Total is the sum of each column separately							
--------------	--	--	--	--	--	--	--	--

Job

Formation Name	Formation Depth (MD)	Top	Bottom	Form Type	Job depth MD	Job Depth TVD	Water Depth	Perforation Depth (MD)	From	To
				BHST	606. ft	650. ft				

Job Times

Date	Time	Time Zone
29 - Nov - 2012	22:00	MST
29 - Nov - 2012	23:00	MST
30 - Nov - 2012	01:00	MST
30 - Nov - 2012	01:54	MST
30 - Nov - 2012	03:00	MST

Well Data

Description	New / Used	Max pressure psig	Size in	ID in	Weight lbm/ft	Thread	Grade	Top MD ft	Bottom MD ft	Top TVD ft	Bottom TVD ft
Open Hole				12.25				.	615.	.	.
Surface Casing	Mixed		8.625	8.097	24.			.	606.	.	.

Fluid Data

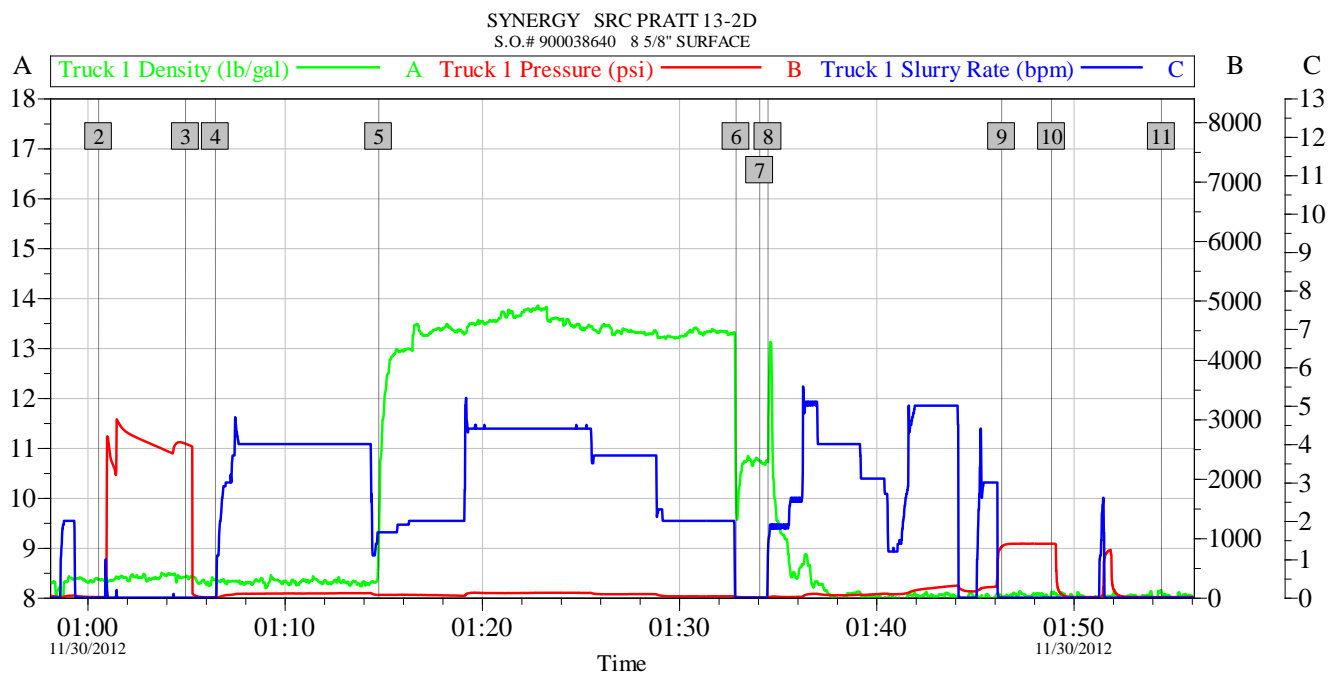
Stage/Plug #: 1									
Fluid #	Stage Type	Fluid Name	Qty	Qty uom	Mixing Density lbm/gal	Yield ft3/sk	Mix Fluid Gal/sk	Rate bbl/min	Total Mix Fluid Gal/sk

HALLIBURTON***Cementing Job Summary***

1	Fresh Water Spacer		30.00	bbl	8.33	.0	.0	.0	
2	SwiftCem B2	SWIFTCEM (TM) SYSTEM (452990)	175.0	sacks	13.4	1.84	9.74		9.74
9.74 Gal		FRESH WATER							
<i>The Information Stated Herein Is Correct</i>				<i>Customer Representative Signature</i>					

HALLIBURTON

Data Acquisition



Global Event Log					
Intersection		T1D	T1P	Intersection	T1D T1P
2 Start Job	01:00:34	8.370	10.000	3 Test Lines	01:04:59 8.420 2590
4 Pump Water Spacer	01:06:30	8.360	5.000	5 Pump Cement @ 13.4#	01:14:46 9.137 46.00
6 Shutdown	01:32:54	10.05	16.09	7 Drop Top Plug	01:34:06 10.74 6.000
8 Pump Displacement	01:34:31	10.74	6.327	9 Bump Plug	01:46:22 8.020 853.1
10 Check Floats	01:48:54	8.109	907.0	11 End Job	01:54:28 8.121 10.000

Customer: SYNERGY	Job Date: 30-Nov-2012	Sales Order #: 900038640
Well Description: 8 5/8" SURFACE	UWI: 05-123-33222	
SERVICE SUPERVISOR JONATHAN SNYDER	SERVICE OPERATOR BOB HALE	

OptiCem v6.4.10
30-Nov-12 02:02

