

# **LEGEND:**

 EXISTING LOCATION

**EnCana OIL & GAS (USA) INC.**

**WELL PAD SG L27 496**

**SECTION 27, T4S, R96W, 6th P.M.**

**NW 1/4 SW 1/4**

**SHEET 7 of 10**



**Uintah Engineering & Land Surveying**  
85 South 200 East Vernal, Utah 84078  
(435) 789-1017 \* FAX (435) 789-1813



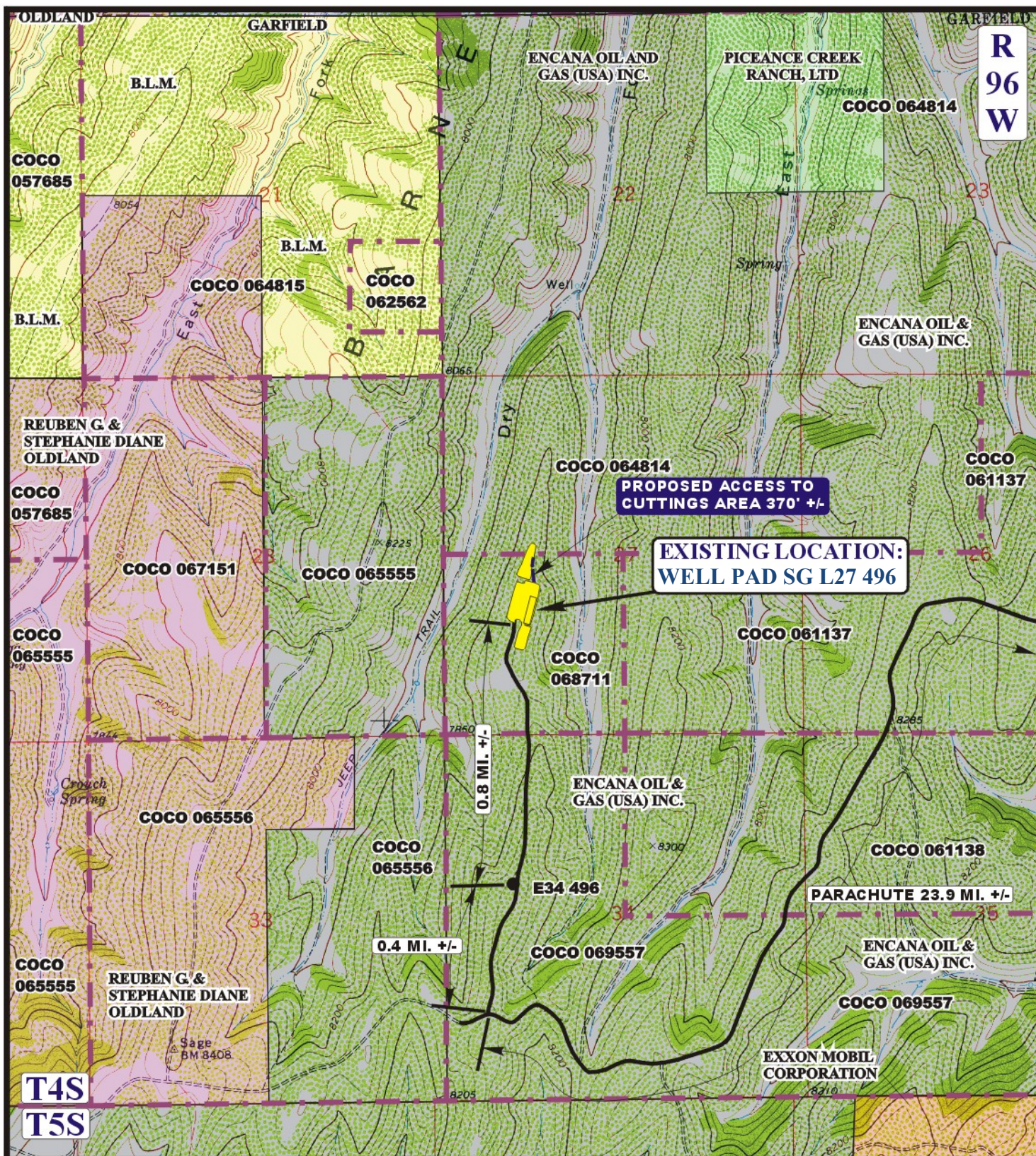
**TOPOGRAPHIC  
MAP**

**4 4 07**  
MONTH DAY YEAR

SCALE: 1:100,000 DRAWN BY: J.L.G. REVISED: 09-29-12







# LEGEND:

EXISTING ROAD  
 PROPOSED ACCESS



**Encana OIL & GAS (USA) INC.**  
**WELL PAD SG L27 496**  
**SECTION 27, T4S, R96W, 6th P.M.**  
**NW 1/4 SW 1/4**

SHEET 8 OF 10



Uintah Engineering & Land Surveying  
 85 South 200 East Vernal, Utah 84078  
 (435) 789-1017 \* FAX (435) 789-1813

**ACCESS ROAD**  
**MAP**

**4** **4** **07**  
 MONTH DAY YEAR

SCALE: 1" = 2000' DRAWN BY: J.L.G. REVISED: 09-29-12

**B**  
 TOPO



Encana OIL & GAS (USA) INC.  
WELL PAD UI 'L27 496  
SECTION 27, T4S, R96W, 6<sup>th</sup> P.M.

PROCEED IN A NORTHWESTERLY DIRECTION FROM PARACHUTE, COLORADO ALONG COUNTY ROAD 215 APPROXIMATELY 10.8 MILES TO THE JUNCTION OF THIS ROAD AND AN EXISTING ROAD TO THE NORTHWEST; TURN LEFT AND PROCEED IN A NORTHWESTERLY DIRECTION APPROXIMATELY 10.0 MILES TO THE JUNCTION OF THIS ROAD AND AN EXISTING ROAD SOUTHWEST; TURN LEFT AND PROCEED IN A SOUTHWESTERLY DIRECTION APPROXIMATELY 3.1 MILES TO THE JUNCTION OF THIS ROAD AND AN EXISTING ROAD TO THE NORTH; TURN RIGHT AND PROCEED IN A NORTHERLY DIRECTION APPROXIMATELY 0.4 MILES TO WELL PAD E34 496 PAD AND AN EXISTING ROAD TO THE NORTH; PROCEED IN A NORTHERLY DIRECTION APPROXIMATELY 0.8 MILES TO THE EXISTING WELL LOCATION.

TOTAL DISTANCE FROM PARACHUTE, COLORADO TO THE EXISTING WELL LOCATION IS APPROXIMATELY 25.1 MILES.