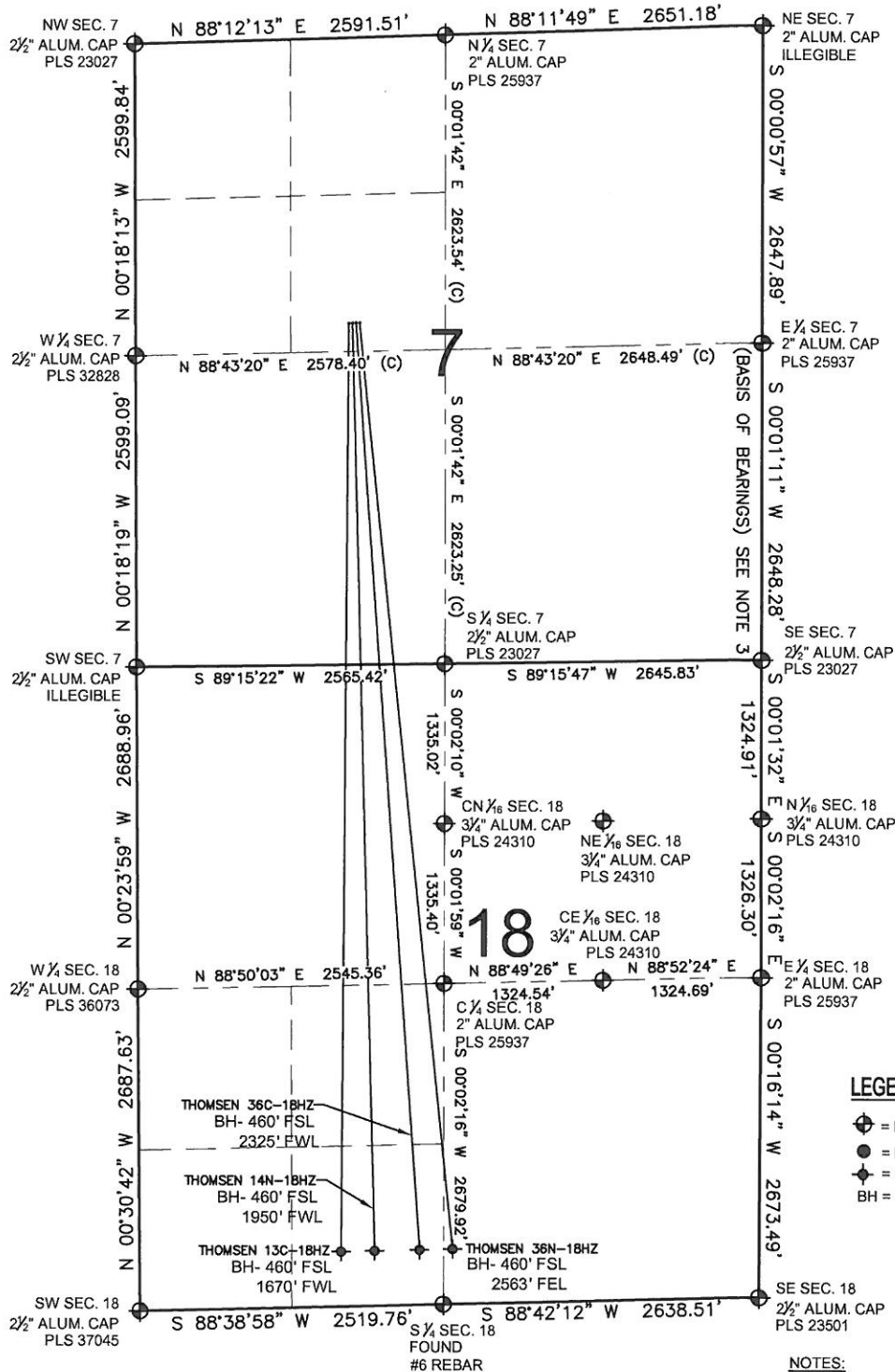


THOMSEN 14N-18HZ MULTI-WELL PLAN

SECTION 7, TOWNSHIP 2 NORTH, RANGE 65 WEST, 6TH P.M.



PREPARED BY:

PFS llc

Petroleum Field Services, LLC
1801 W. 13th Ave.
Denver, CO 80204

KERR-MCGEE OIL & GAS ONSHORE LP

FIELD DATE:

11-15-12

DRAWING DATE:

11-19-12

SURFACE LOCATION:

SE 1/4 NW 1/4, SEC. 7, T2N, R65W, 6TH P.M.

WELD COUNTY, COLORADO