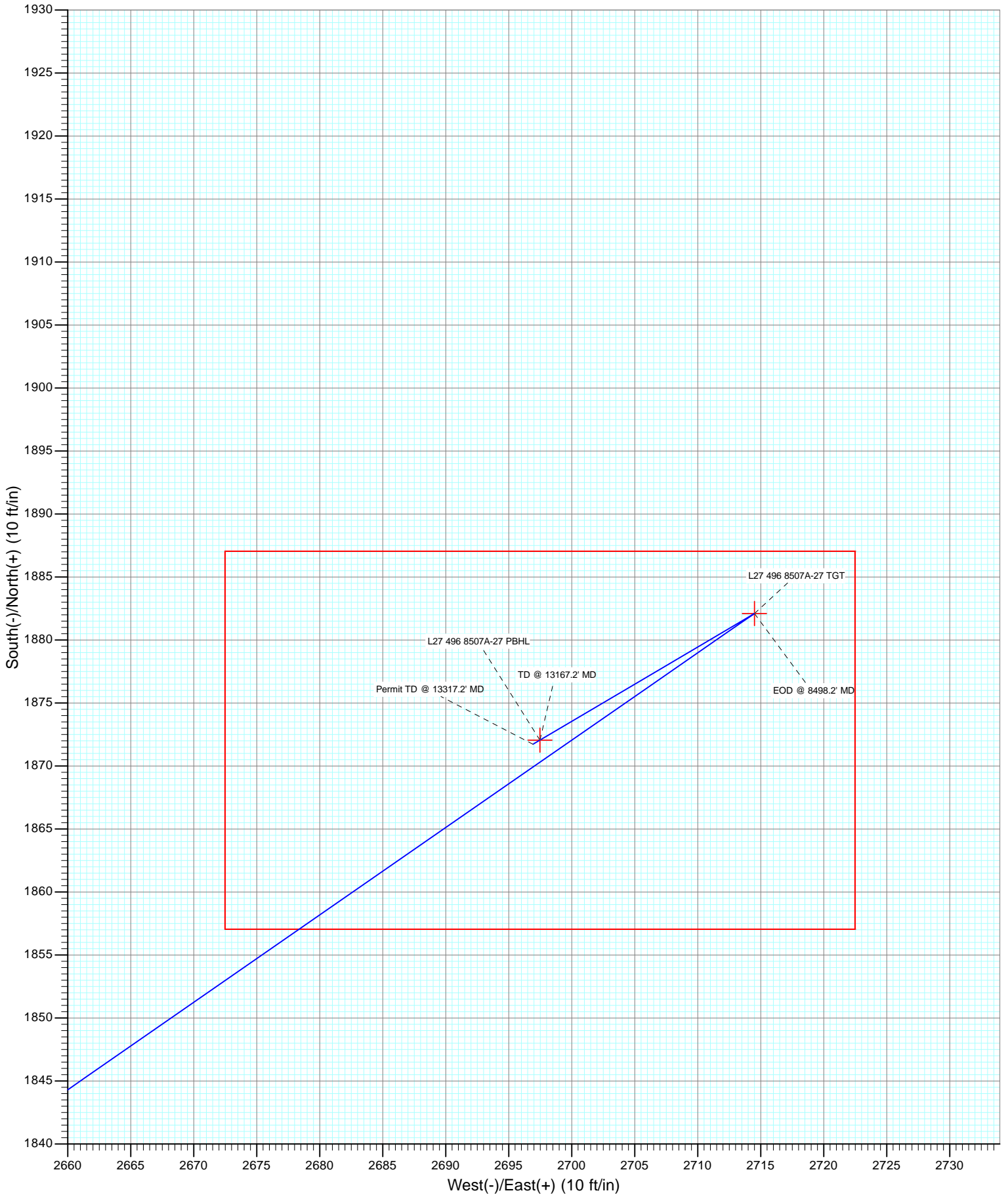




Project: Story Gulch
Site: S27-T4S-R96W (L27 496)
Well: 8507A-27 L27 496
Wellbore: DD
Design: Plan #1



Cathedral Energy Services

Planning Report

Database:	USA EDM 5000 Multi Users DB	Local Co-ordinate Reference:	Well 8507A-27 L27 496
Company:	EnCana Oil & Gas (USA) Inc	TVD Reference:	WELL @ 8136.0ft (Original Well Elev)
Project:	Story Gulch	MD Reference:	WELL @ 8136.0ft (Original Well Elev)
Site:	S27-T4S-R96W (L27 496)	North Reference:	True
Well:	8507A-27 L27 496	Survey Calculation Method:	Minimum Curvature
Wellbore:	DD		
Design:	Plan #1		

Project	Story Gulch		
Map System:	US State Plane 1983	System Datum:	Mean Sea Level
Geo Datum:	North American Datum 1983		
Map Zone:	Colorado Central Zone		

Site	S27-T4S-R96W (L27 496)				
Site Position:		Northing:	1,680,404.44 ft	Latitude:	39° 40' 17.06 N
From:	Lat/Long	Easting:	2,251,282.88 ft	Longitude:	108° 9' 36.59 W
Position Uncertainty:	0.0 ft	Slot Radius:	13.200 in	Grid Convergence:	-1.68 °

Well	8507A-27 L27 496					
Well Position	+N/-S	0.0 ft	Northing:	1,680,428.26 ft	Latitude:	39° 40' 17.30 N
	+E/-W	0.0 ft	Easting:	2,251,298.44 ft	Longitude:	108° 9' 36.40 W
Position Uncertainty		0.0 ft	Wellhead Elevation:	ft	Ground Level:	8,104.0 ft

Wellbore	DD				
Magnetics	Model Name	Sample Date	Declination	Dip Angle	Field Strength
	IGRF2010	9/24/2012	(°)	(°)	(nT)
			10.28	65.82	52,178

Design	Plan #1			
Audit Notes:				
Version:	Phase:	PLAN	Tie On Depth:	0.0
Vertical Section:	Depth From (TVD)	+N/-S	+E/-W	Direction
	(ft)	(ft)	(ft)	(°)
	0.0	0.0	0.0	55.24

Plan Sections										
Measured Depth (ft)	Inclination (°)	Azimuth (°)	Vertical Depth (ft)	+N/-S (ft)	+E/-W (ft)	Dogleg Rate (°/100ft)	Build Rate (°/100ft)	Turn Rate (°/100ft)	TFO (°)	Target
0.0	0.00	0.00	0.0	0.0	0.0	0.00	0.00	0.00	0.00	
250.0	0.00	0.00	250.0	0.0	0.0	0.00	0.00	0.00	0.00	
1,136.6	26.60	55.26	1,105.1	115.2	166.1	3.00	3.00	0.00	55.26	
7,611.6	26.60	55.26	6,894.9	1,766.9	2,548.4	0.00	0.00	0.00	0.00	
8,498.2	0.00	0.00	7,750.0	1,882.1	2,714.5	3.00	-3.00	0.00	180.00	L27 496 8507A-27 TC
8,596.2	0.25	239.44	7,848.0	1,882.0	2,714.3	0.25	0.25	-123.01	239.44	
13,167.2	0.25	239.44	12,419.0	1,872.1	2,697.5	0.00	0.00	0.00	0.00	L27 496 8507A-27 PE
13,317.2	0.25	239.44	12,569.0	1,871.7	2,696.9	0.00	0.00	0.00	0.00	

Cathedral Energy Services

Planning Report

Database: USA EDM 5000 Multi Users DB
Company: EnCana Oil & Gas (USA) Inc
Project: Story Gulch
Site: S27-T4S-R96W (L27 496)
Well: 8507A-27 L27 496
Wellbore: DD
Design: Plan #1

Local Co-ordinate Reference: Well 8507A-27 L27 496
TVD Reference: WELL @ 8136.0ft (Original Well Elev)
MD Reference: WELL @ 8136.0ft (Original Well Elev)
North Reference: True
Survey Calculation Method: Minimum Curvature

Planned Survey

Measured Depth (ft)	Inclination (°)	Azimuth (°)	Vertical Depth (ft)	+N/-S (ft)	+E/-W (ft)	Vertical Section (ft)	Dogleg Rate (°/100ft)	Build Rate (°/100ft)	Comments / Formations
0.0	0.00	0.00	0.0	0.0	0.0	0.0	0.00	0.00	
100.0	0.00	0.00	100.0	0.0	0.0	0.0	0.00	0.00	
200.0	0.00	0.00	200.0	0.0	0.0	0.0	0.00	0.00	
250.0	0.00	0.00	250.0	0.0	0.0	0.0	0.00	0.00	KOP @ 250' MD
300.0	1.50	55.26	300.0	0.4	0.5	0.7	3.00	3.00	
400.0	4.50	55.26	399.8	3.4	4.8	5.9	3.00	3.00	
500.0	7.50	55.26	499.3	9.3	13.4	16.3	3.00	3.00	
600.0	10.50	55.26	598.0	18.2	26.3	32.0	3.00	3.00	
700.0	13.50	55.26	695.8	30.1	43.4	52.8	3.00	3.00	
800.0	16.50	55.26	792.4	44.8	64.6	78.6	3.00	3.00	
900.0	19.50	55.26	887.5	62.4	90.0	109.5	3.00	3.00	
1,000.0	22.50	55.26	980.9	82.8	119.5	145.4	3.00	3.00	
1,100.0	25.50	55.26	1,072.2	106.0	152.9	186.0	3.00	3.00	
1,136.6	26.60	55.26	1,105.1	115.2	166.1	202.1	3.00	3.00	EOB; Inc=26.6°
1,187.9	26.60	55.26	1,151.0	128.3	185.0	225.1	0.00	0.00	A_GROOVE_TVD
1,200.0	26.60	55.26	1,161.8	131.3	189.4	230.5	0.00	0.00	
1,300.0	26.60	55.26	1,251.2	156.8	226.2	275.3	0.00	0.00	
1,360.2	26.60	55.26	1,305.0	172.2	248.4	302.2	0.00	0.00	B_GROOVE_TVD
1,382.5	26.60	55.26	1,325.0	177.9	256.6	312.2	0.00	0.00	B_GROOVE_BASE_TVD
1,400.0	26.60	55.26	1,340.6	182.4	263.0	320.0	0.00	0.00	
1,500.0	26.60	55.26	1,430.0	207.9	299.8	364.8	0.00	0.00	
1,600.0	26.60	55.26	1,519.5	233.4	336.6	409.6	0.00	0.00	
1,700.0	26.60	55.26	1,608.9	258.9	373.4	454.4	0.00	0.00	
1,800.0	26.60	55.26	1,698.3	284.4	410.2	499.1	0.00	0.00	
1,900.0	26.60	55.26	1,787.7	309.9	447.0	543.9	0.00	0.00	
2,000.0	26.60	55.26	1,877.1	335.4	483.8	588.7	0.00	0.00	
2,100.0	26.60	55.26	1,966.5	360.9	520.6	633.4	0.00	0.00	
2,200.0	26.60	55.26	2,056.0	386.4	557.4	678.2	0.00	0.00	
2,300.0	26.60	55.26	2,145.4	411.9	594.1	723.0	0.00	0.00	
2,400.0	26.60	55.26	2,234.8	437.5	630.9	767.8	0.00	0.00	
2,446.1	26.60	55.26	2,276.0	449.2	647.9	788.4	0.00	0.00	GARDEN_GULCH_TVD.
2,500.0	26.60	55.26	2,324.2	463.0	667.7	812.5	0.00	0.00	
2,600.0	26.60	55.26	2,413.6	488.5	704.5	857.3	0.00	0.00	
2,700.0	26.60	55.26	2,503.1	514.0	741.3	902.1	0.00	0.00	
2,800.0	26.60	55.26	2,592.5	539.5	778.1	946.8	0.00	0.00	
2,900.0	26.60	55.26	2,681.9	565.0	814.9	991.6	0.00	0.00	
3,000.0	26.60	55.26	2,771.3	590.5	851.7	1,036.4	0.00	0.00	
3,100.0	26.60	55.26	2,860.7	616.0	888.5	1,081.2	0.00	0.00	
3,200.0	26.60	55.26	2,950.1	641.5	925.3	1,125.9	0.00	0.00	
3,300.0	26.60	55.26	3,039.6	667.0	962.1	1,170.7	0.00	0.00	
3,400.0	26.60	55.26	3,129.0	692.6	998.9	1,215.5	0.00	0.00	
3,500.0	26.60	55.26	3,218.4	718.1	1,035.6	1,260.2	0.00	0.00	
3,551.0	26.60	55.26	3,264.0	731.1	1,054.4	1,283.1	0.00	0.00	WASATCH_FM_TVD
3,600.0	26.60	55.26	3,307.8	743.6	1,072.4	1,305.0	0.00	0.00	
3,700.0	26.60	55.26	3,397.2	769.1	1,109.2	1,349.8	0.00	0.00	
3,800.0	26.60	55.26	3,486.7	794.6	1,146.0	1,394.5	0.00	0.00	
3,900.0	26.60	55.26	3,576.1	820.1	1,182.8	1,439.3	0.00	0.00	
4,000.0	26.60	55.26	3,665.5	845.6	1,219.6	1,484.1	0.00	0.00	
4,100.0	26.60	55.26	3,754.9	871.1	1,256.4	1,528.9	0.00	0.00	
4,200.0	26.60	55.26	3,844.3	896.6	1,293.2	1,573.6	0.00	0.00	
4,300.0	26.60	55.26	3,933.7	922.1	1,330.0	1,618.4	0.00	0.00	
4,400.0	26.60	55.26	4,023.2	947.7	1,366.8	1,663.2	0.00	0.00	

Cathedral Energy Services

Planning Report

Database: USA EDM 5000 Multi Users DB
Company: EnCana Oil & Gas (USA) Inc
Project: Story Gulch
Site: S27-T4S-R96W (L27 496)
Well: 8507A-27 L27 496
Wellbore: DD
Design: Plan #1

Local Co-ordinate Reference: Well 8507A-27 L27 496
TVD Reference: WELL @ 8136.0ft (Original Well Elev)
MD Reference: WELL @ 8136.0ft (Original Well Elev)
North Reference: True
Survey Calculation Method: Minimum Curvature

Planned Survey

Measured Depth (ft)	Inclination (°)	Azimuth (°)	Vertical Depth (ft)	+N/-S (ft)	+E/-W (ft)	Vertical Section (ft)	Dogleg Rate (°/100ft)	Build Rate (°/100ft)	Comments / Formations
4,500.0	26.60	55.26	4,112.6	973.2	1,403.6	1,707.9	0.00	0.00	
4,600.0	26.60	55.26	4,202.0	998.7	1,440.4	1,752.7	0.00	0.00	
4,700.0	26.60	55.26	4,291.4	1,024.2	1,477.2	1,797.5	0.00	0.00	
4,800.0	26.60	55.26	4,380.8	1,049.7	1,513.9	1,842.3	0.00	0.00	
4,900.0	26.60	55.26	4,470.3	1,075.2	1,550.7	1,887.0	0.00	0.00	
5,000.0	26.60	55.26	4,559.7	1,100.7	1,587.5	1,931.8	0.00	0.00	
5,100.0	26.60	55.26	4,649.1	1,126.2	1,624.3	1,976.6	0.00	0.00	
5,200.0	26.60	55.26	4,738.5	1,151.7	1,661.1	2,021.3	0.00	0.00	
5,300.0	26.60	55.26	4,827.9	1,177.2	1,697.9	2,066.1	0.00	0.00	
5,400.0	26.60	55.26	4,917.3	1,202.8	1,734.7	2,110.9	0.00	0.00	
5,500.0	26.60	55.26	5,006.8	1,228.3	1,771.5	2,155.7	0.00	0.00	
5,600.0	26.60	55.26	5,096.2	1,253.8	1,808.3	2,200.4	0.00	0.00	
5,700.0	26.60	55.26	5,185.6	1,279.3	1,845.1	2,245.2	0.00	0.00	
5,800.0	26.60	55.26	5,275.0	1,304.8	1,881.9	2,290.0	0.00	0.00	
5,900.0	26.60	55.26	5,364.4	1,330.3	1,918.7	2,334.7	0.00	0.00	
6,000.0	26.60	55.26	5,453.8	1,355.8	1,955.5	2,379.5	0.00	0.00	
6,043.8	26.60	55.26	5,493.0	1,367.0	1,971.6	2,399.1	0.00	0.00	WASATCH_G_TVD
6,100.0	26.60	55.26	5,543.3	1,381.3	1,992.2	2,424.3	0.00	0.00	
6,200.0	26.60	55.26	5,632.7	1,406.8	2,029.0	2,469.0	0.00	0.00	
6,300.0	26.60	55.26	5,722.1	1,432.3	2,065.8	2,513.8	0.00	0.00	
6,400.0	26.60	55.26	5,811.5	1,457.9	2,102.6	2,558.6	0.00	0.00	
6,500.0	26.60	55.26	5,900.9	1,483.4	2,139.4	2,603.4	0.00	0.00	
6,600.0	26.60	55.26	5,990.4	1,508.9	2,176.2	2,648.1	0.00	0.00	
6,700.0	26.60	55.26	6,079.8	1,534.4	2,213.0	2,692.9	0.00	0.00	
6,800.0	26.60	55.26	6,169.2	1,559.9	2,249.8	2,737.7	0.00	0.00	
6,900.0	26.60	55.26	6,258.6	1,585.4	2,286.6	2,782.4	0.00	0.00	
7,000.0	26.60	55.26	6,348.0	1,610.9	2,323.4	2,827.2	0.00	0.00	
7,100.0	26.60	55.26	6,437.4	1,636.4	2,360.2	2,872.0	0.00	0.00	
7,200.0	26.60	55.26	6,526.9	1,661.9	2,397.0	2,916.8	0.00	0.00	
7,300.0	26.60	55.26	6,616.3	1,687.4	2,433.8	2,961.5	0.00	0.00	
7,400.0	26.60	55.26	6,705.7	1,713.0	2,470.5	3,006.3	0.00	0.00	
7,500.0	26.60	55.26	6,795.1	1,738.5	2,507.3	3,051.1	0.00	0.00	
7,600.0	26.60	55.26	6,884.5	1,764.0	2,544.1	3,095.8	0.00	0.00	
7,611.6	26.60	55.26	6,894.9	1,766.9	2,548.4	3,101.0	0.00	0.00	Start 3° Drop @ 7611.6' MD
7,700.0	23.95	55.26	6,974.8	1,788.4	2,579.4	3,138.8	3.00	-3.00	
7,800.0	20.95	55.26	7,067.3	1,810.2	2,610.8	3,176.9	3.00	-3.00	
7,900.0	17.95	55.26	7,161.5	1,829.2	2,638.1	3,210.2	3.00	-3.00	
8,000.0	14.95	55.26	7,257.4	1,845.3	2,661.4	3,238.5	3.00	-3.00	
8,100.0	11.95	55.26	7,354.7	1,858.5	2,680.5	3,261.8	3.00	-3.00	
8,200.0	8.95	55.26	7,453.0	1,868.9	2,695.4	3,279.9	3.00	-3.00	
8,300.0	5.95	55.26	7,552.2	1,876.2	2,706.1	3,292.9	3.00	-3.00	
8,400.0	2.95	55.26	7,651.9	1,880.7	2,712.4	3,300.6	3.00	-3.00	
8,458.2	1.20	55.26	7,710.0	1,881.9	2,714.2	3,302.7	3.00	-3.00	WILLIAMS_FORK_TVD
8,498.2	0.00	0.00	7,750.0	1,882.1	2,714.5	3,303.2	3.00	-3.00	EOD @ 8498.2' MD - TOG TVD
8,500.0	0.00	239.44	7,751.8	1,882.1	2,714.5	3,303.2	0.25	0.25	
8,596.2	0.25	239.44	7,848.0	1,882.0	2,714.3	3,302.9	0.25	0.25	
8,600.0	0.25	239.44	7,851.8	1,882.0	2,714.3	3,302.9	0.00	0.00	
8,700.0	0.25	239.44	7,951.8	1,881.8	2,713.9	3,302.5	0.00	0.00	
8,800.0	0.25	239.44	8,051.8	1,881.6	2,713.6	3,302.1	0.00	0.00	
8,900.0	0.25	239.44	8,151.8	1,881.3	2,713.2	3,301.6	0.00	0.00	
9,000.0	0.25	239.44	8,251.8	1,881.1	2,712.8	3,301.2	0.00	0.00	
9,100.0	0.25	239.44	8,351.8	1,880.9	2,712.5	3,300.8	0.00	0.00	

Cathedral Energy Services

Planning Report

Database:	USA EDM 5000 Multi Users DB	Local Co-ordinate Reference:	Well 8507A-27 L27 496
Company:	EnCana Oil & Gas (USA) Inc	TVD Reference:	WELL @ 8136.0ft (Original Well Elev)
Project:	Story Gulch	MD Reference:	WELL @ 8136.0ft (Original Well Elev)
Site:	S27-T4S-R96W (L27 496)	North Reference:	True
Well:	8507A-27 L27 496	Survey Calculation Method:	Minimum Curvature
Wellbore:	DD		
Design:	Plan #1		

Planned Survey									
Measured Depth (ft)	Inclination (°)	Azimuth (°)	Vertical Depth (ft)	+N/-S (ft)	+E/-W (ft)	Vertical Section (ft)	Dogleg Rate (°/100ft)	Build Rate (°/100ft)	Comments / Formations
9,200.0	0.25	239.44	8,451.8	1,880.7	2,712.1	3,300.4	0.00	0.00	
9,300.0	0.25	239.44	8,551.8	1,880.5	2,711.7	3,299.9	0.00	0.00	
9,400.0	0.25	239.44	8,651.8	1,880.2	2,711.4	3,299.5	0.00	0.00	
9,500.0	0.25	239.44	8,751.8	1,880.0	2,711.0	3,299.1	0.00	0.00	
9,600.0	0.25	239.44	8,851.8	1,879.8	2,710.6	3,298.7	0.00	0.00	
9,700.0	0.25	239.44	8,951.8	1,879.6	2,710.3	3,298.2	0.00	0.00	
9,800.0	0.25	239.44	9,051.8	1,879.4	2,709.9	3,297.8	0.00	0.00	
9,900.0	0.25	239.44	9,151.8	1,879.2	2,709.5	3,297.4	0.00	0.00	
10,000.0	0.25	239.44	9,251.8	1,878.9	2,709.2	3,297.0	0.00	0.00	
10,100.0	0.25	239.44	9,351.8	1,878.7	2,708.8	3,296.5	0.00	0.00	
10,200.0	0.25	239.44	9,451.8	1,878.5	2,708.4	3,296.1	0.00	0.00	
10,300.0	0.25	239.44	9,551.8	1,878.3	2,708.0	3,295.7	0.00	0.00	
10,400.0	0.25	239.44	9,651.8	1,878.1	2,707.7	3,295.2	0.00	0.00	
10,500.0	0.25	239.44	9,751.8	1,877.9	2,707.3	3,294.8	0.00	0.00	
10,600.0	0.25	239.44	9,851.8	1,877.6	2,706.9	3,294.4	0.00	0.00	
10,700.0	0.25	239.44	9,951.8	1,877.4	2,706.6	3,294.0	0.00	0.00	
10,800.0	0.25	239.44	10,051.8	1,877.2	2,706.2	3,293.5	0.00	0.00	
10,900.0	0.25	239.44	10,151.8	1,877.0	2,705.8	3,293.1	0.00	0.00	
11,000.0	0.25	239.44	10,251.8	1,876.8	2,705.5	3,292.7	0.00	0.00	
11,100.0	0.25	239.44	10,351.8	1,876.5	2,705.1	3,292.3	0.00	0.00	
11,200.0	0.25	239.44	10,451.8	1,876.3	2,704.7	3,291.8	0.00	0.00	
11,300.0	0.25	239.44	10,551.8	1,876.1	2,704.4	3,291.4	0.00	0.00	
11,400.0	0.25	239.44	10,651.8	1,875.9	2,704.0	3,291.0	0.00	0.00	
11,500.0	0.25	239.44	10,751.8	1,875.7	2,703.6	3,290.6	0.00	0.00	
11,600.0	0.25	239.44	10,851.8	1,875.5	2,703.3	3,290.1	0.00	0.00	
11,700.0	0.25	239.44	10,951.8	1,875.2	2,702.9	3,289.7	0.00	0.00	
11,800.0	0.25	239.44	11,051.8	1,875.0	2,702.5	3,289.3	0.00	0.00	
11,892.2	0.25	239.44	11,144.0	1,874.8	2,702.2	3,288.9	0.00	0.00	CAMEO_TVD
11,900.0	0.25	239.44	11,151.8	1,874.8	2,702.2	3,288.9	0.00	0.00	
12,000.0	0.25	239.44	11,251.8	1,874.6	2,701.8	3,288.4	0.00	0.00	
12,100.0	0.25	239.44	11,351.8	1,874.4	2,701.4	3,288.0	0.00	0.00	
12,200.0	0.25	239.44	11,451.8	1,874.2	2,701.0	3,287.6	0.00	0.00	
12,270.2	0.25	239.44	11,522.0	1,874.0	2,700.8	3,287.3	0.00	0.00	ROLLINS_TVD
12,300.0	0.25	239.44	11,551.8	1,873.9	2,700.7	3,287.1	0.00	0.00	
12,400.0	0.25	239.44	11,651.8	1,873.7	2,700.3	3,286.7	0.00	0.00	
12,500.0	0.25	239.44	11,751.8	1,873.5	2,699.9	3,286.3	0.00	0.00	
12,544.2	0.25	239.44	11,796.0	1,873.4	2,699.8	3,286.1	0.00	0.00	COZZETTE_TVD
12,600.0	0.25	239.44	11,851.8	1,873.3	2,699.6	3,285.9	0.00	0.00	
12,700.0	0.25	239.44	11,951.8	1,873.1	2,699.2	3,285.4	0.00	0.00	
12,730.2	0.25	239.44	11,982.0	1,873.0	2,699.1	3,285.3	0.00	0.00	CORCORAN_TVD
12,800.0	0.25	239.44	12,051.8	1,872.9	2,698.8	3,285.0	0.00	0.00	
12,900.0	0.25	239.44	12,151.8	1,872.6	2,698.5	3,284.6	0.00	0.00	
13,000.0	0.25	239.44	12,251.8	1,872.4	2,698.1	3,284.2	0.00	0.00	
13,017.2	0.25	239.44	12,269.0	1,872.4	2,698.0	3,284.1	0.00	0.00	UPPER_SEGO_TVD
13,100.0	0.25	239.44	12,351.8	1,872.2	2,697.7	3,283.7	0.00	0.00	
13,167.2	0.25	239.44	12,419.0	1,872.1	2,697.5	3,283.4	0.00	0.00	TD @ 13167.2' MD - SEGO_BASE_TARGET_1
13,200.0	0.25	239.44	12,451.8	1,872.0	2,697.4	3,283.3	0.00	0.00	
13,300.0	0.25	239.44	12,551.8	1,871.8	2,697.0	3,282.9	0.00	0.00	
13,317.2	0.25	239.44	12,569.0	1,871.7	2,696.9	3,282.8	0.00	0.00	Permit TD @ 13317.2' MD

Cathedral Energy Services

Planning Report

Database:	USA EDM 5000 Multi Users DB	Local Co-ordinate Reference:	Well 8507A-27 L27 496
Company:	EnCana Oil & Gas (USA) Inc	TVD Reference:	WELL @ 8136.0ft (Original Well Elev)
Project:	Story Gulch	MD Reference:	WELL @ 8136.0ft (Original Well Elev)
Site:	S27-T4S-R96W (L27 496)	North Reference:	True
Well:	8507A-27 L27 496	Survey Calculation Method:	Minimum Curvature
Wellbore:	DD		
Design:	Plan #1		

Targets										
Target Name	Dip Angle	Dip Dir.	TVD	+N/-S	+E/-W	Northing	Easting	Latitude	Longitude	
- hit/miss target	(°)	(°)	(ft)	(ft)	(ft)	(ft)	(ft)			
- Shape										
L27 496 8507A-27 TGT - plan hits target center - Point	0.00	0.00	7,750.0	1,882.1	2,714.5	1,682,230.08	2,254,066.88	39° 40' 35.90 N	108° 9' 1.68 W	
L27 496 8507A-27 PBHI - plan hits target center - Rectangle (sides W30.0 H50.0 D0.0)	0.00	0.00	12,419.0	1,872.1	2,697.5	1,682,220.54	2,254,049.58	39° 40' 35.80 N	108° 9' 1.90 W	

Formations						
Measured Depth	Vertical Depth	Name	Lithology	Dip	Dip Direction	
(ft)	(ft)			(°)	(°)	
1,187.9	1,151.0	A_GROOVE_TVD				
1,360.2	1,305.0	B_GROOVE_TVD				
1,382.5	1,325.0	B_GROOVE_BASE_TVD				
2,446.1	2,276.0	GARDEN_GULCH_TVD.				
3,551.0	3,264.0	WASATCH_FM_TVD				
6,043.8	5,493.0	WASATCH_G_TVD				
8,458.2	7,710.0	WILLIAMS_FORK_TVD				
8,498.2	7,750.0	TOG TVD				
11,892.2	11,144.0	CAMEO_TVD				
12,270.2	11,522.0	ROLLINS_TVD				
12,544.2	11,796.0	COZZETTE_TVD				
12,730.2	11,982.0	CORCORAN_TVD				
13,017.2	12,269.0	UPPER_SEGO_TVD				
13,167.2	12,419.0	SEGO_BASE_TARGET_TVD				

Plan Annotations					
Measured Depth	Vertical Depth	Local Coordinates		Comment	
(ft)	(ft)	+N/-S (ft)	+E/-W (ft)		
250.0	250.0	0.0	0.0	KOP @ 250' MD	
1,136.6	1,105.1	115.2	166.1	EOB; Inc=26.6°	
7,611.6	6,894.9	1,766.9	2,548.4	Start 3° Drop @ 7611.6' MD	
8,498.2	7,750.0	1,882.1	2,714.5	EOD @ 8498.2' MD	
13,167.2	12,419.0	1,872.1	2,697.5	TD @ 13167.2' MD	
13,317.2	12,569.0	1,871.7	2,696.9	Permit TD @ 13317.2' MD	